

INFECTION CONTROL & HOSPITAL EPIDEMIOLOGY

30th ANNIVERSARY YEAR

VOLUME 31, NUMBER 6

JUNE 2010

ORIGINAL ARTICLES

- 565 **Effectiveness of Alcohol-Based Hand Rubs for Removal of *Clostridium difficile* Spores from Hands** • Umair Jabbar, BA; Julie Leischner, MD; Douglas Kasper, MD; Robert Gerber, MD; Susan P. Sambol, BS, MT(ASCP); Jorge P. Parada, MD, MPH; Stuart Johnson, MD; Dale N. Gerding, MD
- 571 **Commentary: Reexamining Methods and Messaging for Hand Hygiene in the Era of Increasing *Clostridium difficile* Colonization and Infection** • Katherine Ellingson, PhD; Clifford McDonald, MD
- 574 **Prevalence and Characteristics of *Staphylococcus aureus* Colonization among Healthcare Professionals in an Urban Teaching Hospital** • Marie-Carmelle Elie-Turenne, MD; Helen Fernandes, PhD; José R. Mediavilla, BA, BS; Marnie Rosenthal, DO; Barun Mathema, MPH; Ashima Singh, MS; Tiffany R. Cohen, MD; Kimmerle A. Pawar, MD, MPH; Hosseinali Shahidi, MD, MPH; Barry N. Kreiswirth, PhD; Edwin A. Deitch, MD
- 581 **Commentary: The Emergency Department—An Evolving Epicenter for Healthcare Worker Acquisition of Methicillin-Resistant *Staphylococcus aureus*?** • Kyle J. Popovich, MD
- 584 ***Staphylococcus aureus* Nasal Colonization and Subsequent Infection in Intensive Care Unit Patients: Does Methicillin Resistance Matter?** • Hitoshi Honda, MD; Melissa J. Krauss, MPH; Craig M. Coopersmith, MD; Marin H. Kollef, MD; Amy M. Richmond, RN, MHS, CIC; Victoria J. Fraser, MD; David K. Warren, MD, MPH
- 592 **Quantitative Analysis and Molecular Fingerprinting of Methicillin-Resistant *Staphylococcus aureus* Nasal Colonization in Different Patient Populations: A Prospective, Multicenter Study** • L. A. Mermel, DO, SM; S. J. Eells, MPH; M. K. Acharya, MD; J. M. Cartony, BS; D. Dacus, MS; S. Fadem, MD; E. A. Gay, BS; S. Gordon, MD; J. R. Lonks, MD; T. M. Perl, MD, MSc; L. K. McDougal, MS; J. E. McGowan, MD; G. Maxey, BA; D. Morse, MS; F. C. Tenover, PhD
- 598 **Universal Methicillin-Resistant *Staphylococcus aureus* (MRSA) Surveillance for Adults at Hospital Admission: An Economic Model and Analysis** • Bruce Y. Lee, MD, MBA; Rachel R. Bailey, MPH; Kenneth J. Smith, MD, MS; Robert R. Muder, MD; Elsa S. Strotmeyer, PhD; G. Jonathan Lewis, DO, MPH; Paul J. Ufberg, DO, MBA; Yeohan Song; Lee H. Harrison, MD
- 607 **Occurrence of Skin and Environmental Contamination with Methicillin-Resistant *Staphylococcus aureus* before Results of Polymerase Chain Reaction at Hospital Admission Become Available** • Shelley Chang, PhD; Ajay K. Sethi, PhD, MHS; Usha Stiefel, MD; Jennifer L. Cadnum, BS; Curtis J. Donskey, MD
- 613 **Changes in the Molecular Epidemiological Characteristics of Methicillin-Resistant *Staphylococcus aureus* in a Neonatal Intensive Care Unit** • Alison J. Carey, MD; Phyllis Della-Latta, PhD, MSc; Richard Huard, PhD; Fann Wu, MD, PhD; Phillip L. Graham III, MD, MSc; Diane Carp, RN, MSN; Lisa Saiman, MD, MPH
- 620 **Potential Role of Active Surveillance in the Control of a Hospital-Wide Outbreak of Carbapenem-Resistant *Klebsiella pneumoniae* Infection** • Debby Ben-David, MD; Yasmin Maor, MD; Nathan Keller, MD; Gili Regev-Yochay, MD; Ilana Tal, MS; Dalit Shachar, RN; Amir Zlotkin, PhD; Gill Smollan, MD; Galia Rahav, MD
- 627 **Hospital-Acquired Catheter-Associated Urinary Tract Infection: Documentation and Coding Issues May Reduce Financial Impact of Medicare's New Payment Policy** • Jennifer Meddings, MD, MSc; Sanjay Saint, MD, MPH; Laurence F. McMahon Jr, MD, MPH



CONTENTS CONTINUED INSIDE

THE OFFICIAL JOURNAL OF THE SOCIETY FOR HEALTHCARE EPIDEMIOLOGY OF AMERICA

BD Protect™



the **best offense**
is a **good defense**



Helping all people
live healthy lives

In the fight against Healthcare-Associated Infections,

a good defense means having the right information to make the right decisions at the right time. **BD Protect™ is the first infection surveillance and data management system** to help fight infections on all fronts:

Infection Prevention

Preventing the spread of healthcare associated infections starts with actionable information. With BD Protect, you receive real-time alerts from your hospital systems and analyze ongoing processes and outcomes for evidence-based decisions.

Healthcare Worker Safety

Your people are your first line of defense. To enhance the safety of your healthcare workers, BD Protect helps you schedule and track employee vaccines, fit tests, exams, in-service education, absences, injuries and illnesses.

Syndromic Surveillance

You might never see them coming. But BD Protect will. By analyzing aggregate symptom data from patients presenting to the emergency room, BD Protect flags potential outbreaks faster than lab results.

To learn more, visit us on the web at www.bd.com/ds/BDProtect, email us at BDProtect@bd.com, or call us at **800.426.8015**.

BD Diagnostics

800.426.8015

www.bd.com/ds/informatics

BD, BD Logo and Protect are trademarks of Becton, Dickinson and Company. ©2010 BD

INFECTION CONTROL & HOSPITAL EPIDEMIOLOGY

VOLUME 31, NUMBER 6

JUNE 2010

CONTENTS CONTINUED FROM COVER

- 634 **An Electronic Hand Hygiene Surveillance Device: A Pilot Study Exploring Surrogate Markers for Hand Hygiene Compliance** • Andrew G. Sahud, MD; Nitin Bhanot, MD, MPH; Anita Radhakrishnan, MD; Rajinder Bajwa, MD; Harish Manyam, MD; James Christopher Post, MD, PhD

CONCISE COMMUNICATIONS

- 640 **Pseudo-outbreak of *Clostridium sordellii* Infection following Probable Cross-Contamination in a Hospital Clinical Microbiology Laboratory** • David M. Aronoff, MD; Tennille Thelen, BSc; Seth T. Walk, PhD; Kathleen Petersen, MS; Julia Jackson, MA; Sylvia Grossman, MT(ASCP); James Rudrik, PhD; Duane W. Newton, PhD; Carol E. Chenoweth, MD
- 643 **Healthcare Worker Knowledge and Attitudes Regarding Influenza Immunization and Childhood Vaccination** • Angela L. Myers, MD, MPH; John Lantos, MD; Lauren Douville, BS; Mary Anne Jackson, MD
- 647 **Ability of Healthcare Workers to Recall Previous Receipt of Tetanus-Containing Vaccination** • Jose-Mario Fontanilla, MD, MPH; Kathryn B. Kirkland, MD; J. Gavin Cotter, MD, MPH; Elizabeth A. Talbot, MD
- 650 **Underestimating the Impact of Ventilator-Associated Pneumonia by Use of Surveillance Data** • Marci Drees, MD, MS, FACP; Sherry Hausman, MPH, CHES; Andrea Rogers, RN, MSN, CIC; Leslie Freeman, RN, CIC; Karen Frosch, CCS; Kathy Wroten, RN, BSN, CIC

RESEARCH BRIEFS

- 653 **Outbreak of Influenza A (H1N1) Virus Infection in a Nursing School in Hong Kong** • Christopher K. C. Lai, MD; K. L. Cheng, RN; S. Y. Lee, RN; H. K. Siu, BSc; Dominic N. C. Tsang, MD
- 655 **Susceptibility to Measles, Mumps, and Rubella in Newly Hired (2006–2008) Healthcare Workers Born before 1957** • David J. Weber, MD, MPH; Stephanie Consoli, RN; Emily Sickbert-Bennett, MS; Melissa B. Miller, PhD; William A. Rutala, PhD, MPH
- 657 **Assessment of the 48-Hour Rule for Identifying Community-Associated Methicillin-Resistant *Staphylococcus aureus* Infection Complicated by Bacteremia** • Kristen Kreisel, PhD; Mary-Claire Roghmann, MD; Michelle Shardell, PhD; O. Colin Stine, PhD; Eli Perencevich, MD; Alan Lesse, MD; Fred Gordin, MD; Michael Climo, MD; J. Kristie Johnson, PhD
- 659 **Comparison of *Escherichia coli* Strains as Agents for Bacterial Interference** • Rabih O. Darouiche, MD; Sarah Riosa, BS; Richard A. Hull, PhD
- 661 **Prevalence of Antimicrobial Use among United States Nursing Home Residents: Results from a National Survey** • Amy L. Pakyz, PharmD; Lisa L. Dwyer, MPH

LETTERS TO THE EDITOR

- 663 **Rapid Testing for Pandemic Influenza A (H1N1): Diagnostic Test Utility and Specimen Source** • Anucha Apisarnthanarak, MD; Linda M. Mundy, MD

CONTENTS CONTINUED ON NEXT PAGE

INFECTION CONTROL & HOSPITAL EPIDEMIOLOGY

VOLUME 31, NUMBER 6

JUNE 2010

CONTENTS CONTINUED FROM PREVIOUS PAGE

- 664 **Correlation between Rates of Carbapenem Consumption and the Prevalence of Carbapenem-Resistant *Pseudomonas aeruginosa* in a Tertiary Care Hospital in Brazil: A 4-Year Study** •
Guilherme H. C. Furtado, MD; Luciana B. Perdiz, RN; Julio H. Onita, MD; Sérgio B. Wey, MD;
Eduardo A. S. Medeiros, MD
- 666 **Antibiotic Stewardship: The “Real World” When Resources Are Limited** • Daniel Curcio, MD

An Official Publication of the Society for Healthcare Epidemiology of America

EDITOR

Suzanne F. Bradley, MD • Ann Arbor, MI

DEPUTY EDITOR

Carol A. Kauffman, MD • Ann Arbor, MI

SENIOR ASSOCIATE EDITORS

C. Glen Mayhall, MD • Galveston, TX
Gina Pugliese, RN, MS • Chicago, IL
William Schaffner, MD • Nashville, TN

ASSOCIATE EDITORS

Ebbing Lautenbach, MD, MPH • Philadelphia, PA
Preeti N. Malani, MD, MSJ • Ann Arbor, MI
David Weber, MD, MPH • Chapel Hill, NC

STATISTICS CONSULTANT

Rodney L. Dunn, MS • Ann Arbor, MI

SECTION EDITOR FOR GUIDELINES, POSITION PAPERS, AND INVITED REVIEWS

Carol Chenoweth, MD • Ann Arbor, MI

MANAGING EDITOR

Rob Blixt • Chicago, IL

PAST EDITORS

Infection Control

Richard P. Wenzel, MD, 1980–1990 (vols. 1–11)

Infection Control and Hospital Epidemiology

Richard P. Wenzel, MD, 1991–1992 (vols. 12 and 13)

Michael D. Decker, MD, 1993–2001 (vols. 14–22)

Barry M. Farr, MD, 2002–2004 (vols. 23–25)

William R. Jarvis, MD, 2005–2006 (vols. 26 and 27)

EDITORIAL ADVISORY BOARD

Miriam Alter, PhD, MD • Atlanta, GA
Anucha Apisarntharak, MD • Pratumthani, Thailand
Lennox Archibald, MD, FRCP • Alachua, FL
Hilary Babcock, MD • St. Louis, MO
Elise M. Beltrami, MD, MPH • Decatur, GA
David Birnbaum, PhD, MPH • Sidney, BC
Christian Brun-Buisson, MD • Creteil, France
John P. Burke, MD • Salt Lake City, UT
David P. Calfee, MD, MS • New York, NY
Yehuda Carmeli, MD, MPH • Tel Aviv, Israel
Sara E. Cosgrove, MD, MS • Baltimore, MD
Donald E. Craven, MD • Burlington, MA
Burke A. Cunha, MD • Mineola, NY
Erika D'Agata, MD, MPH • Boston, MA
Patch Dellinger, MD • Seattle, WA
Daniel Diekema, MD • Iowa City, IA
Charles E. Edmiston, Jr., PhD • Milwaukee, WI
Theodore C. Eickhoff, MD • Denver, CO
Martin S. Favero, PhD • Irvine, CA
Jon P. Furuno, PhD • Baltimore, MD
Petra Gastmeier, MD • Hanover, Germany
Dale N. Gerding, MD • Hines, IL
Donald A. Goldmann, MD • Boston, MA
Donna Haiduvén, RN, PhD, CIC • Tampa, FL
Anthony D. Harris, MD, MPH • Baltimore, MD
David K. Henderson, MD • Bethesda, MD
Loreen A. Herwaldt, MD • Iowa City, IA
Peter N. R. Heseltine, MD • San Juan, CA
Karen Hoffmann, RN, CIC, MS • Chapel Hill, NC
Janine Jagger, MPH, PhD • Charlottesville, VA
John A. Jernigan, MD, MS • Atlanta, GA
James T. Lee, MD, PhD • St. Paul, MN
L. Clifford McDonald, MD • Atlanta, GA

Allison McGeer, MD • Toronto, ON
Leonard A. Mermel, DO, ScM • Providence, RI
Robert R. Muder, MD • Pittsburgh, PA
Carlene A. Muto, MD, MS • Pittsburgh, PA
Joseph M. Mylotte, MD, CIC • Buffalo, NY
David L. Paterson, MBBS, FRACP • Pittsburgh, PA
Jan Evans Patterson, MD • San Antonio, TX
Sindy M. Paul, MD • Yardley, PA
David A. Pegues, MD • Los Angeles, CA
Eli Perencevich, MD, MS • Baltimore, MD
Michael A. Pfaller, MD • Iowa City, IA
Didier Pittet, MD, MS • Geneva, Switzerland
Gina Pugliese, RN, MS • Chicago, IL
Isaam Raad, MD • Houston, TX
Jordi Rello, MD, PhD • Tarragona, Spain
Manfred L. Rotter, MD, DipBact • Vienna, Austria
Henning Rüden, MD • Berlin, Germany
William A. Rutala, PhD, MPH • Chapel Hill, NC
Lisa Saiman, MD, MPH • New York, NY
Sanjay Saint, MD, MPH • Ann Arbor, MI
William E. Scheckler, MD • Madison, WI
Lynne M. Sehulster, PhD • Atlanta, GA
John A. Sellick, DO • Amherst, NY
Kent Sepkowitz, MD • New York, NY
Samir Shah, MD, MSCE • Philadelphia, PA
Andrew E. Simor, MD • Toronto, ON
Philip W. Smith, MD • Omaha, NE
Denis W. Spelman, MD • Prahan, Victoria, Australia
Jeffrey R. Starke, MD • Houston, TX
Janet E. Stout, PhD • Pittsburgh, PA
Clyde Thornsberrry, PhD • Franklin, TN
William Trick, MD • Chicago, IL
Antoni Trilla, MD, PhD • Barcelona, Spain
Robert A. Weinstein, MD • Chicago, IL
Andreas Widmer, MD, MS • Basel, Switzerland
Marcus Zervos, MD • Royal Oak, MI

Infection Control and Hospital Epidemiology (ISSN 0899-823X) is published monthly by the University of Chicago Press, 1427 E. 60th St., Chicago, IL 60637-2954 (<http://www.journals.uchicago.edu/ICHE/>). The editorial office is in Chicago, Illinois.

Editorial Office

Communications should be addressed to the Editor, *Infection Control and Hospital Epidemiology*, 1427 E. 60th St., Chicago, IL 60637-2954; (e-mail: iche@press.uchicago.edu); telephone: 773-773-2298, fax: 773-753-4247. Contributors should consult the Information for Authors, which is available at the journal's Web site.

Advertising

Please direct advertising inquiries to Journals Advertising, University of Chicago Press, 1427 E. 60th St., Chicago, IL 60637 (e-mail: cbarhany@press.uchicago.edu; telephone: 773-702-8187; fax: 773-702-0172). Publication of an advertisement in *Infection Control and Hospital Epidemiology* does not imply endorsement of its claims by the Society for Healthcare Epidemiology of America, by the Editor, or by the University of Chicago. Correspondence regarding advertising should be addressed to the advertising office in Chicago.

Permissions

Articles may be copied or otherwise reused without permission only to the extent permitted by Sections 107 and 108 of the US Copyright Law. Permission to copy articles for personal, internal, classroom, or library use may be obtained from the Copyright Clearance Center (<http://www.copyright.com>). For all other uses, such as copying for general distribution,

for advertising or promotional purposes, for creating new collective works, or for resale, please contact the Permissions Coordinator, Journals Division, University of Chicago Press, 1427 E. 60th St., Chicago, IL 60637 (e-mail: journalpermissions@press.uchicago.edu; fax: 773-834-3489). Articles in the public domain may be used without permission, but it is customary to contact the author.

Subscriptions

Subscription rates for 2010 are \$180 for individuals and \$413 for institutions. Single-copy rates are \$18 for individuals and \$41 for institutions. Additional rates for non-US subscribers and reduced rates for fellows, residents, and students are available at <http://www.journals.uchicago.edu/ICHE>. Individuals have the option to order directly from the University of Chicago Press. Subscription agent for Japan: Kinokuniya Company, Ltd.

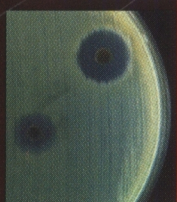
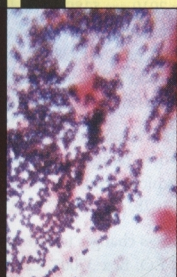
Please direct subscription inquiries, requests for back issues, and address changes to Journals Division, University of Chicago Press, P.O. Box 37005, Chicago, IL 60637 (e-mail: subscriptions@press.uchicago.edu; telephone: 773-753-3347 or toll-free in the United States and Canada 877-705-1878; fax: 773-753-0811 or toll-free 877-705-1879).

Postmaster: Send address changes to *Infection Control and Hospital Epidemiology*, University of Chicago Press, P.O. Box 37005, Chicago, IL 60637-2954.

Periodicals postage paid at Chicago, Illinois, and at an additional mailing office.

Published by the University of Chicago Press, Chicago, Illinois. © 2010 by the Society for Healthcare Epidemiology of America. All rights reserved. This publication is printed on acid-free paper.

THE SOCIETY FOR HEALTHCARE EPIDEMIOLOGY OF AMERICA



Infection prevention and control in healthcare settings is a critical public health problem rapidly gaining interest.

Are you current with the latest trends and evidence?

Join SHEA Today!

Stay on top of emerging science and evidence-based strategies to prevent and control infections and to improve quality-of-care in your healthcare facility.

SHEA supports members' efforts to improve patient care and healthcare worker safety through:

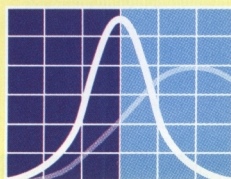
- Research
- Education & Training
- Policy Development
- Evidence-based Practical Guidelines
- Mentorship and Professional Development

Application Details

www.shea-online.org
info@shea-online.org
(703) 684-1006

Annual membership offers:

- Subscription and online access to *Infection Control and Hospital Epidemiology (ICHE)*, the official journal of SHEA
- Epidemiology News and e-newsletter
- Discounted registration on SHEA educational programming
- Online member network and job board



SHEA
The Society for Healthcare
Epidemiology of America

Find the latest in infection control research and practice information in AJIC

American Journal of Infection Control

EDITOR: Elaine L. Larson, RN, PhD, FAAN, CIC

Official Publication of the Association for Professionals in Infection Control and Epidemiology, Inc.

Register at ajicjournal.org

Tables of Contents and all full text articles; free e-alerts and search personalization, and more!

AJIC covers key topics and issues in infection control and epidemiology. Infection control professionals, including physicians, nurses, and epidemiologists, rely on AJIC for peer-reviewed articles covering clinical topics as well as original research. As the official publication of the Association for Professionals in Infection Control and Epidemiology, Inc. (APIC), AJIC is the foremost resource on infection control, epidemiology, infectious diseases, quality management, occupational health, and disease prevention. AJIC also publishes relevant infection control guidelines. AJIC is included in Index Medicus and CINAHL.

Register at ajicjournal.org to receive free access to Tables of Contents and all article abstracts; free access to select full text articles; free e-alerts and search personalization, and more!



Official Publication of the Association for Professionals in Infection Control and Epidemiology, Inc.



to receive free access to article abstracts, free access to select full text articles, and search personalization, and more!

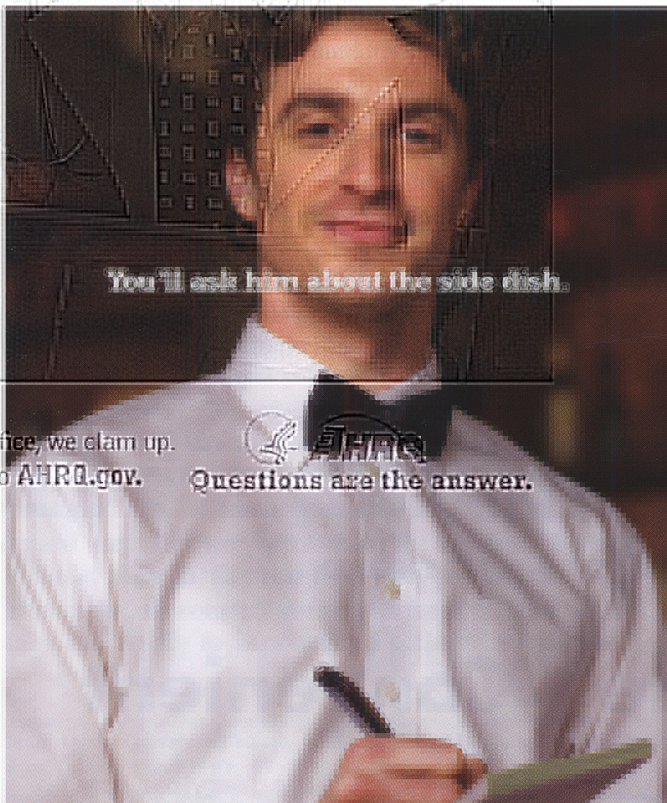
<http://ees.elsevier.com/ajic/>

Submit your manuscript at <http://ees.elsevier.com/ajic/>

But you won't ask him about the side effects.

You'll ask him about the side dish.

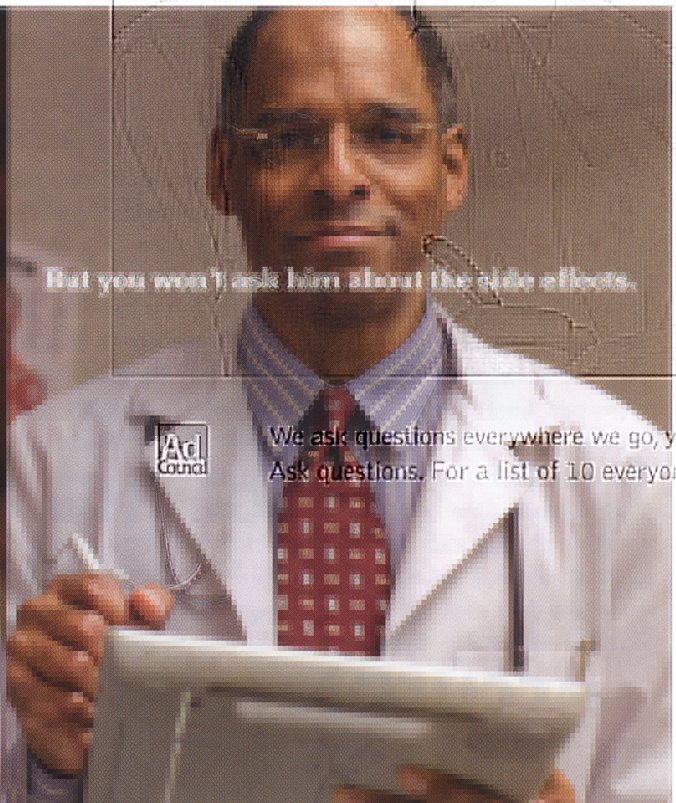
Submit your manuscript at: <http://ees.elsevier.com/ajic/>



You'll ask him about the side dish.



Questions are the answer.



But you won't ask him about the side effects.



We ask questions everywhere we go, yet at the doctor's office, we clam up. Ask questions. For a list of 10 everyone should know, go to AHRQ.gov.



We ask questions everywhere we go, yet at the doctor's office, we clam up. Ask questions. For a list of 10 everyone should know, go to AHRQ.gov.



Questions are the answer.

TB Screening Just Got Easier

oxford.

DIAGNOSTIC LABORATORIES TM

National TB Testing Services

Offering the new generation of TB testing, the **T-SPOT[®].TB** test — the blood test designed to deliver highly accurate results.

Simple 3-Step Process



Collect Blood Specimen

- Uses standard collection tubes
— No special collection tubes required
- No phlebotomy training required



Send the Blood Specimen(s)

- Blood specimens accepted Monday through Saturday
- Packaging and shipping materials provided by Oxford Diagnostic Laboratories



Report the Test Results

- Test results will be reported within 36-48 hours following collection of the specimen(s)
- Quantitative and qualitative results reported

Get Started Today

Contact Client Services at **1-877-59 TBLAB** (1-877-598-2522)

Accurate Simple Convenient

www.tbtestingservices.com

T-SPOT and Oxford Diagnostic Laboratories are trademarks of Oxford Immunotec, Ltd

© 2010 Oxford Immunotec Inc.

JA-ODL-US-V3