

## Short Communication

**Cite this article:** dos Santos PS, Silva ICO, Ferreira VL, Tavares LER, Paiva F and Pereira FB (2024). First genetic characterisation and phylogenetic position of *Aplectana hylambatis* (Nematoda: Cosmocercidae), infecting *Pithecopus azureus* (Anura: Hylidae) in the Brazilian Pantanal. *Journal of Helminthology*, **98**, e62, 1–5  
<https://doi.org/10.1017/S0022149X24000609>.

Received: 16 May 2024  
Revised: 24 July 2024  
Accepted: 24 July 2024


### Keywords:

Taxonomy; amphibian; helminth parasite; Neotropical region

### Corresponding author:

F.B. Pereira;  
Email: [felipebisaggiop@hotmail.com](mailto:felipebisaggiop@hotmail.com)

# First genetic characterisation and phylogenetic position of *Aplectana hylambatis* (Nematoda: Cosmocercidae), infecting *Pithecopus azureus* (Anura: Hylidae) in the Brazilian Pantanal

P.S. dos Santos<sup>1</sup>, I.C.O. Silva<sup>2</sup>, V.L. Ferreira<sup>1</sup>, L.E.R. Tavares<sup>1</sup>, F. Paiva<sup>1</sup> and F. B. Pereira<sup>3</sup> 

<sup>1</sup>Instituto de Biociências, Universidade Federal de Mato Grosso do Sul, Av. Costa e Silva s/nº, CEP 79070-900, Campo Grande, MS, Brasil; <sup>2</sup>Laboratório de Ciências Ambientais e Sustentabilidade Agropecuária, Universidade Católica Dom Bosco, Av. Tamarandé 6000, CEP 79117-900, Campo Grande, MS, Brasil and <sup>3</sup>Departamento de Parasitologia, Instituto de Ciências Biológicas, Universidade Federal de Minas Gerais, Av. Presidente Antônio Carlos, 6627, Pampulha, CEP 31270-901, Belo Horizonte, MG, Brasil

## Abstract

*Aplectana hylambatis* (Baylis, 1927) is a widespread nematode in South America that infects different species of anurans from different families. Although the morphology of this species shows intraspecific variations and is well studied, *A. hylambatis* does not have genetic characterisation. Therefore, the present study aimed to provide the first genetic characterisation of this parasite, based on 18S and 28S rDNA sequences, as well as to evaluate its phylogenetic position in the family Cosmocercidae. The present specimens showed no major morphological variations and were assigned to *A. hylambatis* mainly based on the shape of spicules and the presence of mamelon-like structures slightly anterior to the vulva. The genetic characterisation confirmed the close relationship between *A. hylambatis* and other cosmocerids, and the 28S sequences were more informative for phylogenetic reconstruction, especially for those relationships at higher and intermediate levels. *Aplectana hylambatis* was in a basal position within a clade formed by other congeners and species of *Cosmocerca*. The geographic origin may have influence in the divergence process of *Aplectana* spp. and genus was non-monophyletic and closely related to *Cosmocerca*, similar to previous findings. The present results will be useful for future studies on the phylogeny of Cosmocercidae, since several genera and species in this family still lack genetic characterisation. Furthermore, the 28S sequences can be useful in genetic studies of *A. hylambatis* populations, since this species appears to have phenotypic variations.

## Introduction

*Aplectana hylambatis* (Baylis, 1927) is a cosmocerid (Cosmocercidae: Cosmocercidae) parasite common to anurans from Argentina, Ecuador, Guyana, Paraguay, Peru, Uruguay, and Brazil (Campião *et al.*, 2014, 2016; Aguiar *et al.*, 2015). This species has apparent low host specificity because it has been reported to infect anurans from different families (Campião *et al.*, 2014; Aguiar *et al.*, 2015; González *et al.*, 2019). Although the morphology of *A. hylambatis* has been well-studied (González *et al.*, 2019), the species is not genetically characterised yet. In fact, from the 58 valid species of *Aplectana* (Santos *et al.*, 2023), only four are available in GenBank database, in addition to others not identified to species level.

During parasitological studies on *Pithecopus azureus* (Cope, 1868) (Anura: Hylidae), collected in the Pantanal wetlands, Brazil, nematode specimens were found parasitizing the large intestine. After detailed morphological evaluation, they were identified as *A. hylambatis* and submitted to molecular analysis. Here, we provide the first genetic characterisation for the species, along with its phylogenetic position in the Cosmocercidae. Moreover, we provide a clear specific diagnosis for the material used in the genetic studies.

## Materials and Methods

Seventy-five specimens of *Pithecopus azureus* (snout-vent length  $34.1 \pm 5.2$  [21.0–47.0] mm) were collected through active search, in the Nhecolândia region (Pantanal wetlands), municipality of Corumbá, State of Mato Grosso do Sul, Brazil (18°59'25"S, 56°39'40"W), from December 2014 to November 2017. Anurans were euthanized by an injection of pentobarbital (10 mg/kg) in the body cavity, and immediately analysed for parasites, according to standard parasitological procedures (Amato *et al.*, 1991). Host collection, transport, and euthanasia were approved by the Sistema de Autorização em Biodiversidade (acronym SISBIO; license number

5739-1) and the Ethics Committee for Animal Use of the Universidade Federal de Mato Grosso do Sul (acronym CEUA-UFMS, license number 878/2017).

Nematodes found alive infecting the large intestine were cleaned in saline, fixed in hot 4% formaldehyde and stored in 70% ethanol, for morphological evaluation. Four male specimens from different infrapopulations (see Bush *et al.*, 1997), had their midbody parts excised, fixed in 100% molecular biology grade ethanol, and stored at  $-22^{\circ}\text{C}$  for DNA isolation; the anterior and posterior parts of each specimen were processed for morphological studies, as previously described. Parasites, including the body parts of the males from which tissue was taken for genetic characterisation, were deposited in the Coleção Zoológica da Universidade Federal de Mato Grosso do Sul (acronym ZUFMS; accession numbers ZUFMS-AMP12210, 12221, 1231). The ecological terminology used herein follows Bush *et al.* (1997).

Morphological observations of the nematodes were performed using light and scanning electron microscopy (SEM) as described by Pereira *et al.* (2019), and their specific identification was based on González *et al.* (2019).

DNA was isolated from small tissue samples, placed in a micro-centrifuge sterile tube (1.5 mL). The sample was cut into small fragments with a sterile scissor, then we added 195  $\mu\text{L}$  of 5% Chelex 100 (Sigma-Aldrich, Saint Louis, Missouri, USA) and 5  $\mu\text{L}$  of proteinase K (20 mg/mL) (Phoneutria, Minas Gerais, Brazil). The tube was briefly vortexed, centrifuged at 3000 rpm, and incubated at  $60^{\circ}\text{C}$  for digestion. Vortex and centrifugation steps were repeated from time to time, until the complete tissue digestion ( $\sim 2$  h). Digestion was followed by an enzymatic denaturation at  $95^{\circ}\text{C}$  for 10 min. The tube was vortexed, centrifuged at 13,000 rpm for 10 min, and the supernatant containing DNA was stored at  $-22^{\circ}\text{C}$ .

Polymerase chain reactions (PCRs) and cycling conditions were the same described by Ailán-Choke *et al.* (2023), using the primers Nema18SF + Nema18SR (Floyd *et al.*, 2005) that flank the 5' end of the 18S rDNA, and D2A + D3B (De Ley *et al.*, 2005) that flank the domains D2A and D3B of the 28S rDNA. PCR products were visualized using agarose gel electrophoresis; the positive amplicons were submitted to enzymatic treatment with ExoSAP-IT (Thermo Fisher, Massachusetts, USA), and sent for Sanger sequencing at ACTGene (Ludwig Biotech, Rio Grande do Sul, Brazil).

Contig sequences were visualised, assembled, edited for primer trimming, and the consensus extracted in Geneious Prime (Dotmatrix). We used the BLAST search (<https://blast.ncbi.nlm.nih.gov/Blast.cgi>) to confirm the close relationship between the sequences obtained for *A. hylambatis* and those of cosmocercid nematodes. Based on the BLAST results, we selected sequences from GenBank with the objective of evaluate the phylogenetic position of *A. hylambatis* in the family Cosmocercidae, based on the following criteria: sequences that covered the same genetic region as those from the present study, identified to species level and present in scientific publications. Unfortunately, there are few 28S sequences of cosmocercid nematodes that overlap those obtained here, in which the overlapping fragment is about 455-bp long. Therefore, we decided to work on two datasets: one consisting of 18S sequences and one consisting of 18S + 28S sequences. It proportionated the best taxa coverage and the evaluation of the phylogenetic informativeness associated with 18S and 28S. Sequences were aligned using MUSCLE, with default options, in Geneious Prime. Alignments were not edited, only trimmed in both ends to equalize sequence size. The reliability of the aligned positions was inspected using TCS (Chang *et al.*, 2015). Sequences used in the phylogenetic analyses are in the Supplementary Table S1.

Phylogenies were inferred using Bayesian inference in BEAST2 (Bouckaert *et al.*, 2019). The best-fit nucleotide substitution model and its parameters for each dataset (partitioned in the 18S + 28S), was evaluated using dModelTest (Bouckaert & Drummond, 2017), implemented in BEAST2. The molecular clock model was relaxed (log exponential), defined according to the nested sampling method (Russel *et al.*, 2019) and the Yule tree prior, which was selected according to the posterior densities and the effective sample sizes (ESS), calculated in Tracer (Rambaut *et al.*, 2018). The posterior estimates of parameter densities and the ESS for each parameter, as well as the posterior probability for branch supports in the majority rule consensus phylogenetic trees, were determined after running the Markov chain Monte Carlo, in two runs of four chains, each run with  $20 \times 10^6$  generations, 25% of burn-in and saving the last 10,001 trees. The quality of the analysis (parameter densities, ESS, and burn-in) and the chain convergence were examined in Tracer (Rambaut *et al.*, 2018). *Dichelyne grandistomis* (Ferraz & Thatcher, 1988) was used as outgroup, based on the phylogenetic reconstruction of nuclear ribosomal sequences provided by Choudhury & Nadler (2016).

The phylogeny and the alignment of 18S + 28S sequences were subjected to an analysis of phylogenetic informativeness using PhyDesign (López-Giráldez & Townsend, 2011), in the webserver <http://phydesign.townsend.yale.edu/>.

## Results and discussion

Prevalence, mean intensity, and mean abundance of parasite infections were 5.3% (4/75),  $12 \pm 11.6$  (2–26), and  $0.64 \pm 3.57$  (0–26), respectively. All parasites were found in the large intestine and in adult stage.

We observed the following morphological features that were used for species diagnosis. The males had a total of 13 pairs of caudal papillae: three pairs were subventral to sublateral and pre-cloacal; two pairs were laterally displaced at cloacal region; three pairs were slightly anterior to the cloacal opening; five pairs were postcloacal, in which the first two pairs were adjacent and sub-ventral, followed by one pair sublateral at the mid-length of the tail, and two pairs at the same level, near the tail tip, of which one was ventral and one was lateral; plus one large unpaired papilla at the anterior cloacal labium. The spicules had a distal articulation that may give them a sickle shape, when protracted from the body; this feature was better observed using SEM. The females had a prominent vulva and, in the vulvar region, there were two conspicuous mamelon-like structures, both anterior to the vulva, in which one was laterally displaced. The features described here, along with a general view of the morphology observed in the present specimens, are depicted in Supplementary Figures S1–S9.

The present specimens showed morphometric features that were within the range of variation observed for *A. hylambatis*. However, some males and females were slightly smaller which also resulted in slightly smaller anatomic structures. We provide the comparative morphometry of *A. hylambatis*, including the present data and that from previous taxonomic studies of the species, in Supplementary Table S2.

There was no genetic divergence in the sequences obtained from the different male specimens, for both genetic markers. Therefore, only one 18S and one 28S sequence was used in the phylogenetic reconstructions. The lengths of the 18S and 28S sequences were 805 bp and 758 bp, respectively. The BLAST search indicated a genetic similarity of 99.0% between the present 18S sequence and

the one labelled as *Raillietnema* sp. (DQ503461). Moreover, 18S genetic similarity between the present sample, and those of *A. chamaeleonis* (Baylis, 1929) and *Cosmocerca ornata* (Dujardin, 1845) was 98.3%. Regarding the 28S, the newly obtained sequence was more similar to those of *C. ornata*, *Cosmocercoides tonkinensis* Tran, Sato & Luc, 2015 and *Co. pulcher* Wilkie, 1930 (genetic similarity ranging from 92.1% to 92.5%).

The alignment of the 18S sequences had 808 sites, of which 101 were variable and corresponded to 12.5% of the aligned positions. The alignment of the 18S and the 28S sequences concatenated had 1,265 sites, of which 323 were variable and corresponded to 25.5% of the aligned positions. Sequence lengths of the samples were the same in all genetic alignments. The best-fit substitution model for the 18S alignments (partitioned in the combined dataset) was the TN93, with equal base frequencies and three different categories of nucleotide substitution; that for the 28S (partitioned in the combined dataset) alignment was also TN93, but with unequal base frequencies and four different categories of nucleotide substitution. All the original files including genetic alignments, outputs of dModelTest and BEAST2, as well as the raw phylogenetic trees are provided in Supplementary Material S1.

The phylogenetic reconstructions based on 18S and 18S + 28S sequences, generated similar topologies, in which nodal supports were improved when using both genes (Figure 1). Only the phylogenetic relationships with high nodal supports will be addressed here. According to both phylogenies, *Aplectana* was not monophyletic because two species of *Cosmocerca* clustered with it (Figure 1). *Aplectana hylambatis* formed a basal lineage within the group formed by its congeners, and *Cosmocerca* spp. (Figure 1). *Aplectana chamaeleonis* was sister to *C. simile* Chen, Zhang, Feng & Li, 2020, and the group formed by them was sister to *C. ornata* (Figure 1). *Aplectana xishuangbannaensis* Chen, Gu, Ni & Li, 2021 appeared as a sister group of *A. dayaoshanensis* Chen, Ni, Gu, Sinsch & Li, 2021. The genus *Cosmocercoides*, was monophyletic and sister to *Nemhelix bakeri* Morand & Petter, 1986 in the phylogeny inferred from 18S sequences (Figure 1). The phylogenetic informativeness profile of 28S was higher than that of 18S sequences, in which there was a sudden drop on it, regarding the most recent divergence events (Figure 1).

The present prevalence and mean abundance of *A. hylambatis* in *P. azureus* can be considered low in comparison with conspecific infections in hosts from different families, other than Hylidae (Aguilar *et al.*, 2015; Campião *et al.*, 2016; González *et al.*, 2019). This parasite has been reported more frequently in anurans from Bufonidae, Leptodactylidae and Microhylidae (Camião *et al.*, 2014, 2016). Although *P. azureus* or other hylids may not be the most suitable hosts for *A. hylambatis*, this is the first report of *A. hylambatis* infecting *P. azureus*.

González *et al.* (2019) provided the most comprehensive morphological analysis of *A. hylambatis*. According to these authors, the species may show both morphological and morphometric variations, which are accounted by differences on host species and geographic distribution. Despite such an intraspecific morphological variability, the presence of an articulation at the distal portion of the spicules, which gives it a sickle shape when protruded for the body, and one to three conspicuous mamelon-like structures slightly anterior to the vulva, seem to be important for the diagnosis of *A. hylambatis*. These features were present in all of the observed parasites, and the mamelon-like structures occurred in pairs. It should be mentioned that the spicules may not assume a sickle shape under light microscopy, depending on the position of the specimen; however, it is easily visible using SEM. Moreover, it is

possible to see the internal articulation zone at the distal end of the spicule, which appears in the form of a groove.

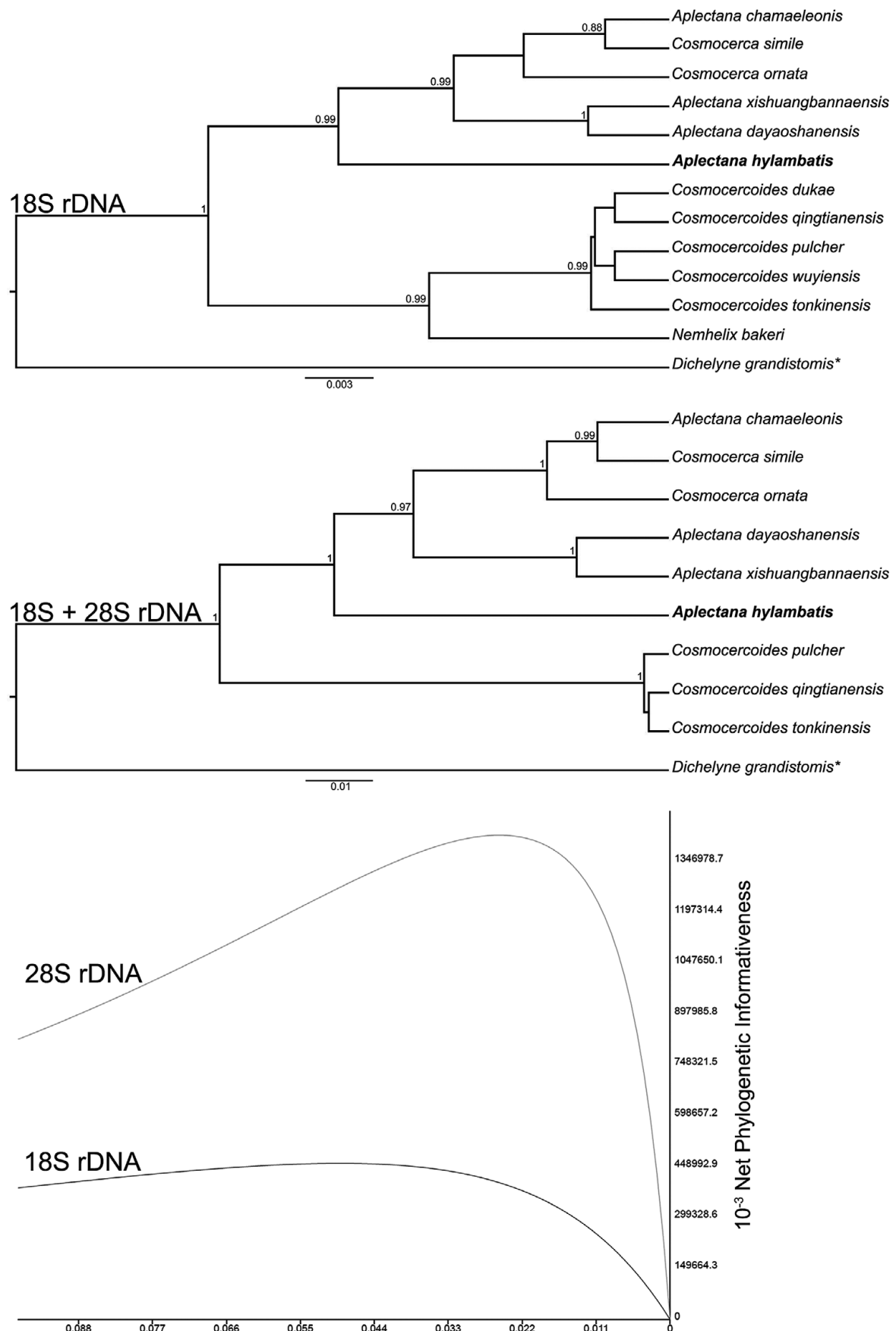
The number and arrangement of caudal papillae in males are commonly used for the diagnosis of nematode parasite species. In *A. hylambatis* they present some variation (González *et al.*, 2019), but still have the following features that seem to be frequent: three pairs and an unpaired papilla slightly anterior to the cloaca, of which one pair is anteriorly displaced; two pairs of lateral papillae slightly posterior and anterior to the cloacal opening, respectively, or somewhat at the same level of it.

All variations attributed to *A. hylambatis*, as well as its low host specificity and wide geographic distribution, may suggest that it is not a single species, but a species complex. Such a similar situation was observed for *P. retusa*, a widely distributed nematode, parasite in different species of reptiles and amphibians (Ailán-Choke *et al.*, 2024). In this sense, this first genetic characterisation of *A. hylambatis* would be useful for further studies on the population genetics of this taxon.

The sequences obtained in the present study were close to those of cosmocercid nematodes, according to the BLAST search and the phylogenetic reconstructions. Moreover, *A. hylambatis* was sister to the other congeners. These results confirm the generic assignment and its morphological identification. However, *Aplectana* was not monophyletic, because *C. simile* and *C. ornata* was grouped with *Aplectana* spp. It is interesting that almost all *Aplectana* and *Cosmocerca* samples originate from China, but *A. chamaeleonis* that were grouped with *C. simile* originates from Germany. In addition, the present sample from Brazil was basal in the clade formed by species of *Aplectana* and *Cosmocerca*. These results indicate some degree of geographic influence on the divergence processes of these taxa, which placed the Brazilian species more distant from those of Europe and China.

According to Chen *et al.* (2021a), *Aplectana* and *Cosmocerca* are closer to each other than to *Cosmocercoides*. Furthermore, Chen *et al.* (2021b) and Svitin *et al.* (2023) observed a lack of monophyly in *Aplectana*, due to the presence of *Cosmocerca* spp. that grouped together with it. The present findings corroborate these results. Therefore, it is possible that some of the diagnostic features of certain genera in Cosmocercinae are homoplastic; for example, the presence of plectanes and of caudal papillae on the plectanes which are used to differentiate *Aplectana* from *Cosmocerca* (Anderson *et al.*, 2009). However, such a discussion will require evidence based on a more diverse genetic database and integrative taxonomic approaches. In fact, it is hard to discuss the phylogeny of Cosmocercidae today, due to the low diversity of genetic sequences available. Several genera and species in this family still lack genetic characterisation, a fact that reinforces the importance of the present results.

Although the 28S alignment was shorter, it was more phylogenetically informative than that of 18S. Therefore, it is reasonable to suggest that the 28S may be considered important in assessing the relationships at higher and intermediate levels, among cosmocercid nematodes. 18S and 28S are not as suitable for diagnosing species as internal transcribed spacer or mitochondrial markers. However, our objective was to evaluate the phylogenetic position of *A. hylambatis* in the Cosmocercidae which clearly indicated that the species is distant from its Old World and Eastern congeners. Moreover, this first genetic characterisation for the species, especially regarding the 28S sequence, will be important for future evaluations of *A. hylambatis* from different hosts and geographic origins, since the 28S D2A-D3B region has been shown to be useful in population genetic studies of nematode parasites (Nadler & Pérez-Ponce de Leon, 2011; Pereira & Luque, 2017).



**Figure 1.** Phylogenetic reconstructions using Bayesian inference, from genetic sequences of cosmocercid nematodes. Nodal supports lower than 0.85 were omitted. Scale bars indicate substitution per site. The sample of the present study is in bold. The graph at the bottom indicates the phylogenetic informativeness profile of 18S and 28S rDNA genetic markers and is related to the tree immediately above.

**Supplementary material.** The supplementary material for this article can be found at <http://doi.org/10.1017/S0022149X24000609>.

**Acknowledgements.** F.B.P. was supported by Fundação de Amparo à Pesquisa do Estado de Minas Gerais, Brazil (FAPEMIG; Process: APQ-01179-21). P.S.d.S. was supported by Conselho Nacional de Desenvolvimento Científico e Tecnológico, Brazil (CNPq; Process: 151858/2022-5).

**Competing interest.** None.

**Ethical standard.** All procedures involving animals were strictly in accordance with the ethical standards for animal use and approved by SISBIO (license number 57379-1) and CEUA (process number 878/2017) (Ethics Committee for Animal Use).

## References

- Aguiar, A., Honório, M.D., Silva, L., and Da Silva, R. (2015) The first report of *Aplectana hylambatis* (Nematoda; Cosmocercidae) associated with *Dermatontotus muelleri* (Anura; Microhylidae) from Brazil. *Herpetological Review* **46**, 336–338.
- Ailán-Choke, L.G., Davies, D., Malta, L.S., Couto, J.V., Tavares, L.E.R., Luque, J.L., and Pereira, F.B. (2023) *Cucullanus pinnai pinnai* and *C. pinnai pterodorasi* (Nematoda Cucullanidae): what does the integrative taxonomy tell us about these species and subspecies classification? *Parasitology Research* **122**, 557–569. doi: 10.1007/s00436-022-07758-3.
- Ailán-Choke, L.G., Ferreira, V.L., Paiva, F., Tavares, L.E.R., Paschoal, F., and Pereira, F.B. (2024) Untangling the defiant taxonomy of *Physaloptera* (Nematoda: Chromadorea: Spirurida: Physalopteridae) parasites in reptiles: an integrative approach on the enigmatic *P. retusa* suggests cryptic speciation. *Taxonomy* **4**, 326–340. doi: 10.3390/taxonomy4020016.
- Amato, J.F.R., Boeger, W.A., and Amato S.B. (1991) *Protocolos para laboratório: coleta e processamento de parasitos de pescado*. Rio de Janeiro: Imprensa Universitária, UFRRJ.
- Anderson, R.C., Chabaud, A.G., and Willmott, S. (2009) *Keys to the nematode parasites of vertebrates: archival volume*. Cambridge: CAB. doi: 10.1079/9781845935726.0000.
- Bouckaert, R. and Drummond, A. (2017) bModelTest: Bayesian phylogenetic site model averaging and model comparison. *BMC Evolutionary Biology* **17**, 42. doi: 10.1186/s12862-017-0890-6.
- Bouckaert, R., Vaughan, T.G., Barido-Sottani, J., Duchêne, S., Fourment, M., Gavryushkina, A., Heled, J., Jones, G., Kühnert, D., De Maio, N., Matschiner, M., Mendes, F.K., Müller, N.F., Ogilvie, H.A., du Plessis, L., Poppinga, A., Rambaut, A., Rasmussen, D., Siveroni, I., Suchard, M.A., Wu, C.H., Xie, D., Zhang, C., Stadler, T., and Drummond, A.J. (2019) BEAST 2.5: an advanced software platform for Bayesian evolutionary analysis. *PLoS Computational Biology* **15**, e1006650. doi: 10.1371/journal.pcbi.1006650.
- Bush, A.O., Lafferty, K.D., Lotz, J.M., and Shostak, A.W. (1997) Parasitology meets ecology on its own terms: Margolis et al. *Revisited*. *The Journal of Parasitology* **83**, 575–583. doi: 10.2307/3284227.
- Campião, K.M., Moraes, D.H., Dias, O.T., Aguiar, A., Toledo, G., Tavares, L.E.R., and Da Silva, R.J. (2014) Checklist of helminth parasites of amphibians from South America. *Zootaxa* **3843**, 1–93. doi: 10.11646/zootaxa.3843.1.1
- Campião, K.M., da Silva, I.C.O., Dalazen, G.T., Paiva, F., and Tavares, L.E.R. (2016) Helminth parasites of 11 anuran species from the Pantanal Wetland, Brazil. *Comparative Parasitology* **83**, 92–100. doi: 10.1654/1525-2647-83.1.92.
- Chang, J.M., Di Tommaso, P., Lefort, V., Gascuel, O. and Notredame, C. (2015) TCS: a web server for multiple sequence alignment evaluation and phylogenetic reconstruction. *Nucleic Acids Research* **43**, W3–W6. doi: 10.1093/nar/gkv310.
- Chen, H.-X., Gu, X.-H., Ni, X.-F., and Li, L. (2021a) Description of a new species of *Aplectana* (Nematoda: Ascaridomorpha: Cosmocercidae) using an integrative approach and preliminary phylogenetic study of Cosmocercidae and related taxa. *Parasites & Vectors* **14**, 1–10. doi: 10.1186/s13071-021-04667-9.
- Chen, H.-X., Ni, X.-F., Gu, X.-H., Sinsch, U., and Li, L. (2021b) Morphology, genetic characterization and phylogeny of *Aplectana dayaoshanensis* n. sp. (Nematoda: Ascaridida) from frogs. *Ingestion, Genetics and Evolution* **96**, 105123. doi: 10.1016/j.meegid.2021.105123.
- Choudhury, A., and Nadler, S.A. (2016) Phylogenetic relationships of Cucullanidae (Nematoda), with observations on Seuratoidea and the monophyly of *Cucullanus*, *Dichelyne* and *Truttaedacnitis*. *The Journal of Parasitology* **102**, 87–93.
- De Ley, P., De Ley, I.T., Morris, K., Abebe, E., Mundo-Ocampo, M., Yoder, M., Heras, J., Waumann, D., Rocha-Olivares, A., Jay Burr, A.H., Baldwin, J.G., and Thomas, W.K. (2005) An integrated approach to fast and informative morphological vouchers for nematodes for applications in molecular barcoding. *Philosophical Transactions of the Royal Society B* **360**, 1945–58. doi: 10.1098/rstb.2005.1726.
- Floyd, R.M., Rogers, A.D., Lamshead, P.J.D., and Smith, C.R. (2005) Nematode-specific PCR primers for the 18S small subunit rRNA gene. *Molecular Ecology Notes* **5**, 611–612. doi: 10.1111/j.1471-8286.2005.01009.x.
- González, C.E., Gómez, V.I., and Hamann, M.I. (2019) Morphological variation of *Aplectana hylambatis* (Nematoda: Cosmocercidae) from different anuran hosts and localities in Argentina. *Anais da Academia Brasileira de Ciências* **9**, e20171028. doi: 10.1590/0001-3765201920171028.
- López-Giráldez, F., and Townsend, J. P. (2011). PhyDesign: an online application for profiling phylogenetic informativeness. *BMC Evolutionary Biology*, **11**(1). doi: 10.1186/1471-2148-11-152
- Nadler, S.A., and Pérez-Ponce de Leon, G. (2011) Integrating molecular and morphological approaches for characterizing parasite cryptic species: implications for parasitology. *Parasitology* **138**, 1688–1709.
- Pereira, F.B., Ferreira, V.L., Tomas, W.M., Elisei, C., Paiva, F., and Tavares, L.E.R. (2019) *Diaphanocephalus galeatus* (Nematoda: Diaphanocephalidae), a poorly known parasite of lizards: redescription, first genetic characterization and a revision of its congeners from Brazil. *Journal of Helminthology* **93**, 629–635. doi: 10.1017/S0022149X18000597.
- Pereira, F.B., and Luque, J.L. (2017) An integrated phylogenetic analysis on ascaridoid nematodes (Anisakidae, Raphidascarididae), including further description and intraspecific variations of *Raphidascaris* (*Sprentascaris*) *lanfrediae* in freshwater fishes from Brazil. *Parasitology International* **66**, 898–904. doi: 10.1016/j.parint.2016.10.012.
- Rambaut, A., Drummond, A.J., Xie, D., Baele, G., and Suchard, M.A. (2018) Posterior summarization in Bayesian phylogenetics using Tracer 1.7. *Systematic Biology* **67**, 901–904. doi: 10.1093/sysbio/syy032.
- Russel, P.M., Brewer, B.J., Klaere, S., and Bouckaert, R.R. (2019) Model selection and parameter inference in phylogenetics using nested sampling. *Systematic Biology* **68**, 219–233. doi: 10.1093/sysbio/syy050.
- Santos, A.N., Borges, E.D.S., Willkens, Y., Santos, J.N.D., Costa-Campos, C. E., and Melo, F.T.V. (2023) A new species of *Aplectana* Railliet & Henry, 1916 (Nematoda: Cosmocercidae) in the Brazilian Amazon and the taxonomic status of *Aplectana longa*. *Revista Brasileira de Parasitologia Veterinária* **32**, e014023. doi: 10.1590/S1984-29612023074.
- Svitin, R., Kuzmin, Y., Harnoster, F., Net, T., and du Preez, L. (2023) *Cosmocerca goroensis* n. sp. (Nematoda: Cosmocercidae) from South Africa and its phylogenetic relationships with other cosmocercids based on partial 28S sequences. *Systematic Parasitology* **100**, 601–610. doi: 10.1007/s11230-023-10109-0.