

## Contents

- A9 Editorial Board  
A11 Highlights of this issue

## Editorials

- 187 **The importance of psychiatry in public mental health**  
N. Mehta and S. C. Davies

- 189 **Psychiatry in public mental health: easy to say, but harder to achieve**  
D. M. Foreman

- 192 **Public mental health: an interdisciplinary subject?**  
S. L. Stewart-Brown

- 194 **Shrink – poems by doctors**  
Tricia Henry

- 195 **Mental well-being: an important outcome for mental health services?**  
A. de Cates, S. Stranges, A. Blake and S. Weich

## Review article

- 198 **Disorder, not just state of risk: meta-analysis of functioning and quality of life in people at high risk of psychosis**  
P. Fusar-Poli, M. Rocchetti, A. Sardella, A. Avila, M. Brandizzi, E. Caverzasi, P. Politi, S. Ruhrmann and P. McGuire

## Papers

- 207 **Recent intimate partner violence among people with chronic mental illness: findings from a national cross-sectional survey**  
H. Khalifeh, S. Oram, K. Trevillion, S. Johnson and L. M. Howard

- 213 **Maternal depression during pregnancy and offspring depression in adulthood: role of child maltreatment**  
D. T. Plant, C. M. Pariante, D. Sharp and S. Pawlby

- 220 **Waltz with Bashir – psychiatry in the movies**  
Jeremy Rampling

- 221 **Antidepressant use in 27 European countries: associations with sociodemographic, cultural and economic factors**  
D. Lewer, C. O'Reilly, R. Mojtabai and S. Evans-Lacko

- 227 **Physical exercise and internet-based cognitive-behavioural therapy in the treatment of depression: randomised controlled trial**  
M. Hallgren, M. Kraepelien, A. Öjehagen, N. Lindefors, Z. Zeebari, V. Kaldo and Y. Forsell

- 235 **Physical exercise for late-life major depression**  
M. Belvederi Murri, M. Amore, M. Menchetti, G. Toni, F. Neviani, M. Cerri, M. B. L. Rocchi, D. Zocchi, L. Bagnoli, E. Tam, A. Buffa, S. Ferrara, M. Neri, G. S. Alexopoulos, S. Zanetidou and the Safety and Efficacy of Exercise for Depression in Seniors (SEEDS) Study Group

- 242 **Authenticity – in 100 words**  
David Brunskill

- 243 **Reciprocal associations between smoking cessation and depression in older smokers: findings from the English Longitudinal Study of Ageing**  
L. Shahab, G. Gilchrist, G. Hagger-Johnson, A. Shankar, E. West and R. West

- 250 **Effectiveness and cost-effectiveness of community singing on mental health-related quality of life of older people: randomised controlled trial**  
S. Coulton, S. Clift, A. Skingley and J. Rodriguez

- 256 **Psychological coping and recurrent major adverse cardiac events following acute coronary syndrome**  
N. Messerli-Bürge, G. J. Molloy, L. Poole, A. Wikman, J. C. Kaski and A. Steptoe

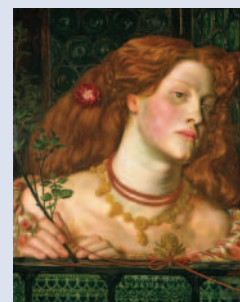
- 262 **Risk and protective factors for suicidal ideation and behaviour in Rwandan children**  
L. C. Ng, C. M. Kirk, F. Kanyanganzi, M. C. Smith Fawzi, V. Sezibera, E. Shema, J. I. Bizimana, F. R. Cyamatare and T. S. Betancourt

## Columns

- 269 Correspondence  
273 Correction  
274 Book reviews  
276 Contents of the *American Journal of Psychiatry*  
277 Kaleidoscope  
279 From the Editor's desk  
280 Contents of *BJPsych Advances*

## Cover picture

*Fair Rosamund* (1861)  
by Dante Gabriel Rossetti (1828–1882).



The Graylingwell Hospital Archive at the West Sussex Record Office has recently revealed the details of the final days of Fanny Cornforth, the artist's model and muse of the Pre-Raphaelite painter Dante Gabriel Rossetti. Until now no one knew how, where or when Fanny – who sat for at least 60 oils, watercolours, pastels and pencil drawings for Rossetti – had died. New research into the patient case books however has shown that she entered the asylum in 1907 and died in 1909 at the age of 74, suffering from senile dementia. She was buried in Chichester Cemetery in a common grave without a headstone. Cited as a supermodel of her time, the discovery about her final days was made at the Record Office by Christopher Whittick, the biographer of Fanny Cornforth for the *Oxford Dictionary of National Biography*, and shortly afterwards by Kirsty Stonell Walker, the author of *Stunner: The Fall and Rise of Fanny Cornforth*. It was the release of the indexes of the Lunacy Commission and Board of Control records by The National Archives in partnership with Ancestry that held the vital clue that sent researchers to the Record Office in pursuit of the last days of Fanny Cornforth.

Wendy Walker, County Archivist, West Sussex Record Office.

Image courtesy of and © National Museum of Wales ([www.museumwales.ac.uk](http://www.museumwales.ac.uk)).

We are always looking for interesting and visually appealing images for the cover of the *Journal* and would welcome suggestions or pictures, which should be sent to Dr Allan Beveridge, British Journal of Psychiatry, 21 Prescott Street, London E1 8BB, UK or [bjp@rcpsych.ac.uk](mailto:bjp@rcpsych.ac.uk).