
INDEX TO ADVERTISERS

Diatome	Cover 2
EDAX	A4
Electron Microscopy Sciences, EMS	Cover 3
Hitachi	Cover 4
Tescan	A7



looking for ways to
move forward
during these challenging times?

Remote Product Demonstrations

Our knowledgeable specialists are ready to give you that trade show experience without the trade show inconvenience, right from your own home or lab. We're ready to show you whatever products you want to see and answer your questions via teleconference with a variety of options available.

Remote Equipment Installations

Why wait for things to get back to normal? Take advantage of technology. Schedule an installation of your new equipment with a remote service call! Our technicians can walk you through installation via teleconference with a variety of options available.

EMS Microscopy Academy

Small Class Size + Clean Facility = a really great way to grow your knowledge and stay healthy while you are doing it! At EMS Microscopy Academy you can take advantage of a classroom environment that is just right for the new normal. See our website for a full class listing.

Please contact us to start moving forward!

**Electron
Microscopy
Sciences**

www.emsdiasum.com

P.O. Box 550 • 1560 Industry Rd.
Hatfield, PA 19440

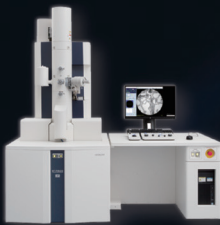
Tel: (215) 412-8400 • Fax: (215) 412-8450
email: info@emsdiasum.com
or stacie@ems-secure.com

Experience Our New Extra-Large Chamber SU3900 VP-SEM

- Allows for Large and Heavy Samples
- Ultra-Wide Field of View Navigation Camera
- New Intelligent Filament Technology
- Integrated EDS Capability



Request a virtual demo at microscopy@hitachi-hita.com



HT7800 120 kV TEM

Redefine the boundaries of 120 kV TEM with modern technology



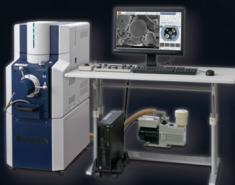
Regulus8230 UHR FE-SEM

Experience the industry standard for ultra-high-resolution SEM



SU7000 UHR Analytical FE/VP-SEM

Elevate research and analysis to the next level with this ultra-high-resolution Schottky SEM



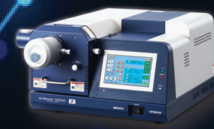
FlexSEM 1000 II VP-SEM

Full-sized SEM power in a small package with our new compact VP-SEM



AFM5300E Environmental SPM

Analysis from all angles with surface, structure, and even correlative EM



ArBlade 5000 Ion Milling System

Better sample preparation leads to better SEM images with our innovative ion milling systems

Innovation ♦ Synergy ♦ Solutions



Science for a better tomorrow

Hitachi High-Tech America, Inc.

www.hitachi-hightech.com/us Tel. 800-253-3053 E-mail: microscopy@hitachi-hita.com