



## Article

\*Present address: Department of Geography and Environmental Sciences, Northumbria University, Newcastle-upon-Tyne, NE1 8ST, UK.

**Cite this article:** Hill EA, Gudmundsson GH, Carr JR, Stokes CR, King HM (2021). Twenty-first century response of Petermann Glacier, northwest Greenland to ice shelf loss. *Journal of Glaciology* 67(261), 147–157. <https://doi.org/10.1017/jog.2020.97>

Received: 16 June 2020  
Revised: 13 October 2020  
Accepted: 14 October 2020  
First published online: 2 December 2020

**Keywords:**

Glacier flow; glacier modelling; ice-shelf break-up

**Author for correspondence:**

Emily A. Hill,  
E-mail: [emily.hill@northumbria.ac.uk](mailto:emily.hill@northumbria.ac.uk)

# Twenty-first century response of Petermann Glacier, northwest Greenland to ice shelf loss

Emily A. Hill<sup>1\*</sup> , G. Hilmar Gudmundsson<sup>2</sup> , J. Rachel Carr<sup>1</sup>, Chris R. Stokes<sup>3</sup> and Helen M. King<sup>2</sup>

<sup>1</sup>School of Geography, Politics, and Sociology, Newcastle University, Newcastle-upon-Tyne, NE1 7RU, UK;

<sup>2</sup>Department of Geography and Environmental Sciences, Northumbria University, Newcastle-upon-Tyne, NE1 8ST, UK and <sup>3</sup>Department of Geography, Durham University, Durham, DH1 3LE, UK

**Abstract**

Ice shelves restrain flow from the Greenland and Antarctic ice sheets. Climate-ocean warming could force thinning or collapse of floating ice shelves and subsequently accelerate flow, increase ice discharge and raise global mean sea levels. Petermann Glacier (PG), northwest Greenland, recently lost large sections of its ice shelf, but its response to total ice shelf loss in the future remains uncertain. Here, we use the ice flow model  $\dot{U}a$  to assess the sensitivity of PG to changes in ice shelf extent, and to estimate the resultant loss of grounded ice and contribution to sea level rise. Our results have shown that under several scenarios of ice shelf thinning and retreat, removal of the shelf will not contribute substantially to global mean sea level (<1 mm). We hypothesize that grounded ice loss was limited by the stabilization of the grounding line at a topographic high ~12 km inland of its current grounding line position. Further inland, the likelihood of a narrow fjord that slopes seawards suggests that PG is likely to remain insensitive to terminus changes in the near future.

**Introduction**

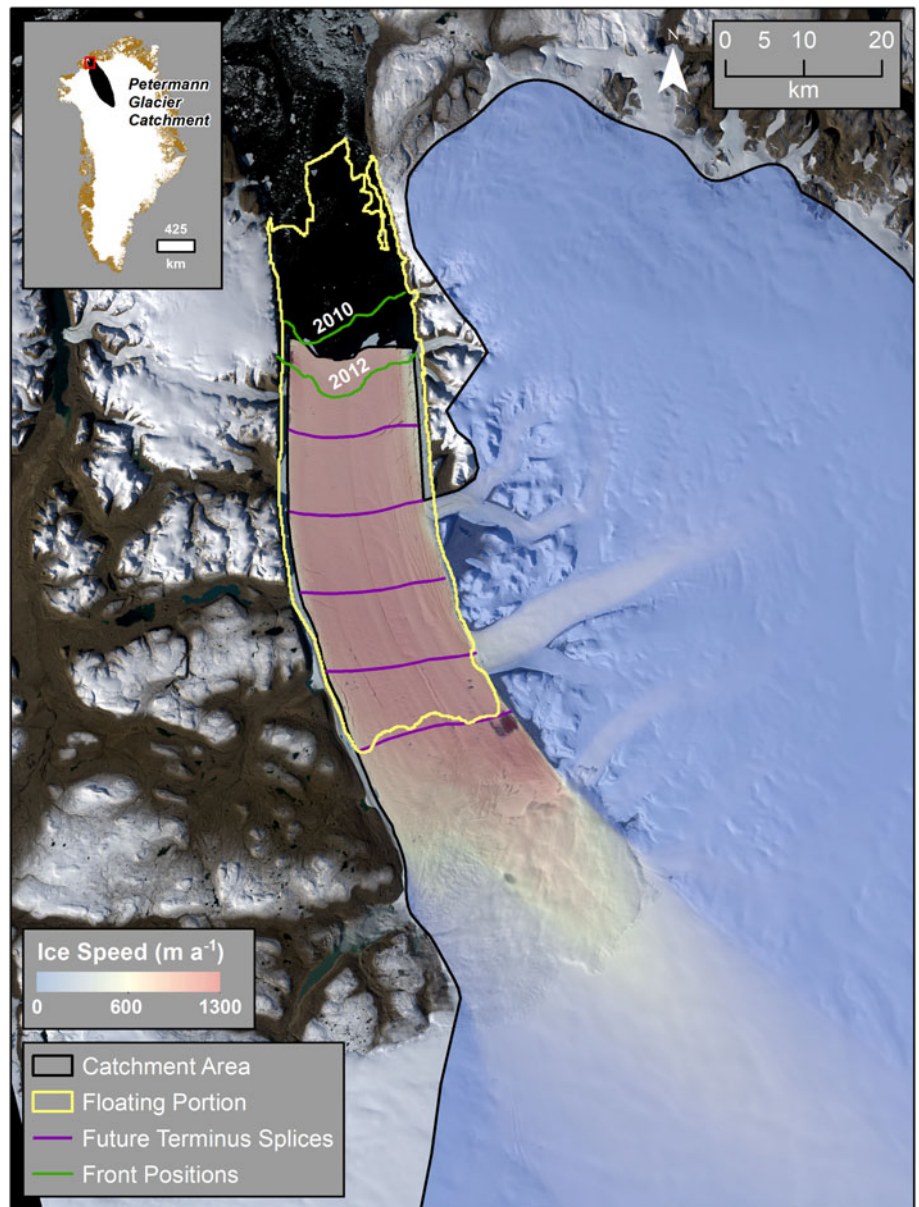
Fast-flowing outlet glaciers draining the Greenland Ice Sheet are dynamically coupled to changes at their terminus (Nick and others, 2009). Many outlet glaciers have thinned and accelerated in response to 21st century terminus retreat from either a grounded (e.g. Howat and others, 2007; Joughin and others, 2008; Moon and others, 2012) or floating terminus (Joughin and others, 2008; Hill and others, 2017). Laterally confined ice shelves at marine termini can provide strong back-stress (i.e. buttressing) on grounded ice (Schoof and others, 2017; Haseloff and Sergienko, 2018). However, floating ice shelves could be destabilized under future climate-ocean warming, reducing resistive stress at the grounding line, which in turn could accelerate ice flow, increase ice discharge and ultimately raise global mean sea level. Ice shelf buttressing has been the focus of recent work on ice shelf collapse/stability in Antarctica (e.g. De Rydt and others, 2015; Paolo and others, 2015; Reese and others, 2018a), but has received limited attention in Greenland.

Petermann Glacier (PG) is a fast flowing ( $\sim 1 \text{ km a}^{-1}$ ) outlet glacier in northwest Greenland that drains  $\sim 4\%$  of the ice sheet (Fig. 1: Münchow and others, 2014). The catchment contains  $1.6 \times 10^5 \text{ km}^3$  of ice volume above flotation (VAF), equivalent to 0.41 m of global mean sea level rise. PG terminates in one of the last remaining ice shelves in Greenland (Hill and others, 2017) (Petermann Glacier Ice Shelf: hereafter PGIS). In the early Holocene the grounding line retreated from the mouth of the fjord (Jakobsson and others, 2018), but the extent of the ice shelf remained largely unchanged. More recently, two large well-documented calving events in 2010 and 2012 (Nick and others, 2012; Johannessen and others, 2013; Münchow and others, 2014) shortened the ice shelf from  $\sim 70$  to 46 km (Fig. 1), which caused some inland ice acceleration ( $\sim 12\%$ ) after 2012 (Münchow and others, 2016; Rückamp and others, 2019). Aside from this, PG does not appear to be undergoing significant temporal changes in geometry or speed as it has exhibited limited surface lowering (Fig. 2), no obvious grounding line retreat over a 19-year period (1992–2011: Hogg and others, 2016), and no significant speed-up in response to recent calving (Nick and others, 2010; Rückamp and others, 2019).

Alongside episodic calving, the extent of the PGIS is controlled by ice–ocean interactions that force high basal melt rates ( $\sim 35 \text{ m a}^{-1}$ ) beneath the shelf (Rignot and Steffen, 2008). Indeed melting along the base of the ice shelf is considered to account for  $\sim 80\%$  of mass loss from the PGIS (Rignot and others, 2008; Münchow and others, 2014). Recent warming ( $\sim 0.2^\circ\text{C}$ ) of Atlantic water between 2002 and 2016 (Münchow and others, 2011; Washam and others, 2018), accompanied by stronger ocean circulation and the break up of sea ice, is likely to have promoted warm water transport into the Petermann fjord and beneath the ice shelf (Johnson and others, 2011; Shroyer and others, 2017; Washam and others, 2018). In response to recent ocean warming and increased subglacial discharge, basal melt rates are estimated to have increased by  $8.1 \text{ m a}^{-1}$  from the 1990s to early 2000s (Cai and others, 2017). The most recent estimates revealed  $50 \text{ m a}^{-1}$  of basal melt at the grounding line between 2011 and 2015 (Wilson and others, 2017).

© The Author(s), 2020. Published by Cambridge University Press. This is an Open Access article, distributed under the terms of the Creative Commons Attribution licence (<http://creativecommons.org/licenses/by/4.0/>), which permits unrestricted re-use, distribution, and reproduction in any medium, provided the original work is properly cited.

[cambridge.org/jog](http://cambridge.org/jog)

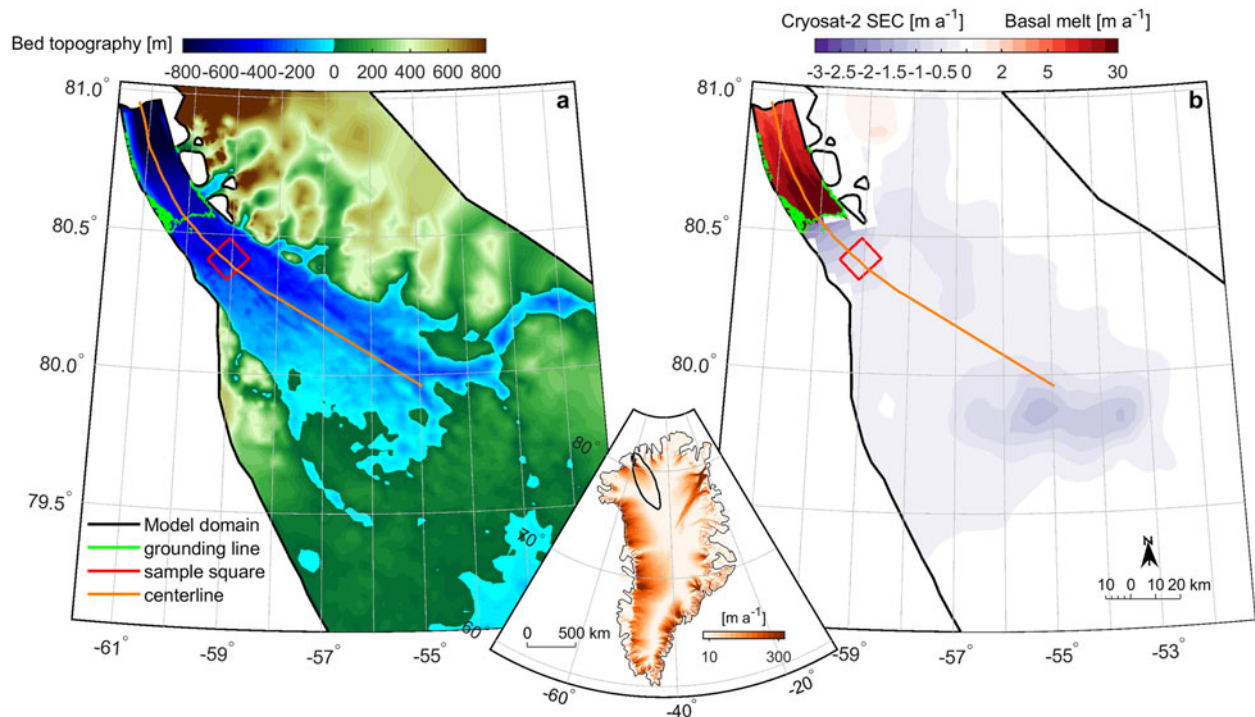


**Fig. 1.** Study figure of Petermann Glacier, northwest Greenland. The yellow outline shows the former extent of PGIS prior to calving events in 2010 and 2012 which are shown in green. Splices of the ice shelf removed during our model experiments are shown in red. The glacier catchment, i.e. our model domain, is outlined in black. Note that the terminus re-advanced following the 2012 calving event. Ice flow speeds are derived from the MEaSUREs Greenland annual ice-sheet velocity mosaic (Joughin and others, 2010b) supplied courtesy of the NASA National Snow and Ice Data Center. Background imagery is panchromatic band 8 (15 m resolution) Landsat 8 imagery from winter 2016, acquired from the US Geological Survey Earth Explorer.

Reductions in the extent and/or thickness of the PGIS in future could reduce buttressing at the grounding line and accelerate ice flow. Accelerated ice flow has been documented following ice shelf thinning or collapse both across Antarctica (Antarctic Peninsula: Scambos and others (2004); De Rydt and others (2015), Amundsen Sea region: Rignot and others (2014); Gudmundsson and others (2019) and in East Antarctica: Miles and others (2018)) and Greenland (Jakobshavn Isbræ, now Sermeq Kujalleq; Joughin and others (2004, 2008) and Zachariæ Isstrøm; Mougintot and others (2015)). It is therefore important to quantify the impact of losing the PGIS on future ice discharge and sea level rise. Previous work used a flowline model at PG to examine both the short-term response to ice shelf collapse (Nick and others, 2012), and the long-term sea level rise contribution under scenarios of future climate change (Nick and others, 2013). However, one-horizontal dimensional (1HD) models do not account for lateral stresses and buttressing in both horizontal directions which limits the accuracy of sea level rise projections (Gudmundsson, 2013; Bondzio and others, 2017). More recently, Hill and others (2018b) used a two-horizontal dimensional (2HD) ice flow model  $\dot{U}a$  (Gudmundsson and others, 2012), to examine the time-independent response of PG to large

calving events. While this showed ice shelf collapse could cause a 96% instantaneous speed-up, it did not examine the transient response of PG to a loss of ice-shelf buttressing. Thus, aside from using a flowline model (Nick and others, 2012), no modelling study has yet assessed the impact of ice shelf thinning/collapse on PG's future contribution to sea level rise.

Here, we use  $\dot{U}a$  to assess the long-term (100 years) dynamic response and sea level contribution of PG to changes downstream of the grounding line. To do this, we perform four forward-in-time sensitivity experiments to assess the future evolution of PG under different scenarios of ice shelf change. The first represents a continuation of current conditions with no further change in ice shelf extent (control run). The following experiments were then designed to encompass the main mass loss mechanisms for the PGIS. The second raised basal melt rates but left the terminus position fixed through time. The following two experiments both impose enhanced basal melting but simulate two mechanisms of ice shelf loss. The third experiment episodically removes sections of the shelf, similar in size to past observed calving events, and the final experiment imposes immediate ice shelf collapse.



**Fig. 2.** (a) Bed topography [m] across the lower portion of the Petermann Glacier catchment, (b) is initially prescribed steady-state melt rates beneath the ice tongue (on a logarithmic scale in red) and green shading is observed surface elevation change (SEC) from Cryosat-2 between 2011 and 2016 (Simonsen and Sørensen, 2017), both of which are in  $\text{m a}^{-1}$ . Both panels show the model domain (black line), the grounding line at the beginning of our control run (green line), glacier centre profile line (orange line) and a sample area (red square) 20 km inland. This square was chosen sufficiently far inland so that it always remained grounded throughout each experiment. Inset map shows Greenland ice flow speed [m a<sup>-1</sup>] in orange and the Petermann catchment outlined in black.

## Methods

### Model set-up

$\tilde{U}a$  (Gudmundsson, 2020) is a vertically integrated ice flow model that solves the ice dynamics equations using the shallow ice-stream/shelf approximation (SSA) (Morland, 1987; MacAyeal, 1989), a Weertman-sliding law (Weertman, 1957) and Glen's flow law (Glen, 1955). The model has been used to understand grounding line dynamics (Gudmundsson and others, 2012; Pattyn and others, 2012) and the impact of ice shelf buttressing and collapse on outlet glacier dynamics in both Antarctica (De Rydt and others, 2015; Reese and others, 2018a) and Greenland (e.g. Hill and others, 2018b).

To set-up the model we use 150 m resolution bedrock geometry, fjord bathymetry, ice thickness and surface topography from the BedMachine v3 dataset (Morlighem and others, 2017). The model domain extends from the ice shelf front in 2016 across the ice surface drainage catchment of PG ( $\sim 85\,000\text{ km}^2$ ; Fig. 1). Our entire computational domain can be seen in Figure 1 and in Figure S1. We used the *Mesh2D* Delaunay-based unstructured mesh-generator (Engwirda, 2014) to create a linear triangular finite-element mesh with 111 391 elements and 56 340 nodes (Fig. S1). The mesh was refined anisotropically based on three criteria: (i) flotation mask, (ii) measured flow speeds and (iii) surface elevation. Element sizes were  $\sim 0.3\text{ km}$  across the ice tongue, where flow speeds are  $>250\text{ m a}^{-1}$ , and at ice surface elevations  $<750\text{ m a.s.l.}$  Where flow speeds are  $<10\text{ m a}^{-1}$  and surface elevation exceeds  $1200\text{ m a.s.l.}$ , element sizes reached a maximum of  $15\text{ km}$ . Nunataks on the eastern side of PGIS were digitized in 2016 Landsat-8 imagery and treated as holes within the mesh, along the boundary of which we fix velocity to zero in both normal and tangential directions. Topographic parameters (ice surface, thickness and bed topography) were linearly interpolated onto this mesh. The boundary condition along the floating ice

shelf terminus is hydrostatic ocean pressure in the normal direction, and free-slip in the tangential. Along the inland catchment boundary we used a fixed (no-slip in normal or tangential directions) zero velocity condition to conserve mass within our model domain. Velocities were also fixed to zero along the lateral ice shelf margins (excluding along the fronts of glaciers on the eastern side of the fjord) as this optimally replicates lateral stresses and ice flow along the PGIS (see Hill and others, 2018b).

We used inverse methodology to initialize the model. Initial observed velocities were taken from the 2016/17 MEaSURES Greenland annual ice-sheet velocity mosaic (Joughin and others, 2010b) derived from both optical (Landsat-8) and synthetic aperture radar data (TerraSAR-X, TanDEM-X, Sentinel-1A and 1B). We optimized our model to observed velocities by simultaneously estimating the basal slipperiness parameter ( $C$ ) in the Weertman sliding law and the ice rheology parameter ( $A$ ) in Glen's flow law (see Fig. S2). The stress exponents in the Weertman sliding law ( $m$ ) and Glen's flow law ( $n$ ) were both set to 3, as commonly used in glaciological studies. This same inverse methodology and model has now been used in a number of previous studies (Hill and others, 2018b; Reese and others, 2018b; Gudmundsson and others, 2019). Inversion was done by minimizing the cost function of a misfit and regularization term.  $\tilde{U}a$  uses the adjoint method to calculate the gradients of the cost function with respect to  $A$  and  $C$  in a computationally efficient way. Regularization of the  $A$  and  $C$  fields is imposed using Tikhonov regularization of both the amplitude and spatial gradients of  $A$  and  $C$ . We tested a series of regularization parameter values and selected final values based on an  $L$ -curve analysis. After a total of 900 iterations, the mean difference between modeled and observed velocities was  $9.5\text{ m a}^{-1}$  (15%). This increased to  $14\text{ m a}^{-1}$  where speeds are  $>300$  and to  $23\text{ m a}^{-1}$  along the PGIS.

Annual surface mass balance (SMB) for all experiments were input from RACMO2.3 (1 km resolution) (Noël and others,

2016), averaged between 2011 and 2016, to reflect current mass-balance conditions. Basal melt rates (defined here as melting along the base of the floating shelf) at PGIS are correlated with ice thickness and are enhanced on either side of basal channels (Rignot and Steffen, 2008; Wilson and others, 2017). In line with a number of studies, we parameterize melt rates based on ice thickness (Joughin and others, 2010a; Favier and others, 2014). Throughout our experiments basal melt rates  $mb$  at each timestep ( $t$ ) were prescribed as a linear-function of ice thickness:

$$mb(t) = \frac{m_{\max} - m_{\min}}{h_{\max}(t) - h_{\min}(t)} \cdot h(t) \quad (1)$$

where the slope is determined using maximum floating ice thickness ( $h_{\max}$ ) minus minimum floating ice thickness ( $h_{\min}$ ) and the difference between minimum melt rates ( $m_{\min}$ : which we always set to  $0 \text{ m a}^{-1}$ ) and maximum ( $m_{\max}$ ) melt rates for each experiment. Initially we impose a  $m_{\max}$  of  $37 \text{ m a}^{-1}$  to reflect near steady-state melt rates in previous studies (Rignot and Steffen, 2008; Cai and others, 2017). This reproduces the expected melt rate pattern beneath the shelf; highest at the grounding line ( $37 \text{ m a}^{-1}$ ) and either side of basal channels, decreasing to  $1 \text{ m a}^{-1}$  near the terminus (Fig. 2).

### Model initialization and control run

For forward transient experiments,  $\dot{U}a$  allows for a fully implicit time integration, where, at each time-step, changes in geometry, grounding line position and velocity are calculated implicitly. During each forward run, we incorporated automated adaptive time-stepping and automated time-dependent mesh refinement around the grounding line. Our adaptive time-stepping increases the timestep if the ratio between the maximum number of non-linear iterations over the previous 5 timesteps and the target number of iterations (set to 4) is less than one. We begin with a timestep of 0.01 years and set our target timestep to 1 year. Mesh refinement around the grounding line is known to improve estimates of stress distributions and migration rates of the grounding line (Durand and others, 2009; Goldberg and others, 2009; Pattyn and others, 2012; Cornford and others, 2013; Schoof and others, 2017). Within 2 km of the grounding line, we locally refined element sizes to 100 m. We also performed mesh sensitivity experiments, and found our results were independent of the resolution of the mesh around the grounding line (see Supplementary Text S1). In a post-processing step, and for illustrative purposes, annual width-averaged grounding line retreat was then calculated using the commonly adopted box method (see Hill and others, 2018a).

In addition to transient mesh refinement, we calculate the basal melt rate field at each time step to account for changes in ice thickness ( $h$ ) throughout our simulations. Maximum and minimum ice thickness values are updated at each time step but  $m_{\max}$  remains constant. This approach, using the difference in ice thickness at each timestep, has the effect of keeping the range of melting across the shelf constant despite reductions in ice thickness through time. In reality this reflects a warming at shallower water depths, but in the absence of additional information on how melt rates will change through time we choose to keep the range of melt rates constant in time across the shelf. Melt rates are applied to every floating and partially floating node at each time step. While applying melt rates right at the grounding line (at partially floating nodes) can overestimate mass loss (Seroussi and Morlighem, 2018) we performed a sensitivity experiment and found that this has a very limited affect on our results (see Fig. S7).

Using the initial input SMB, basal melt rates ( $m_{\max} = 37 \text{ m a}^{-1}$ ), and estimates of basal slipperiness ( $C$ ) and ice rheology parameter ( $A$ ), we performed a control run. This control run was designed to reflect the future evolution of PG if melt rates remain low and no large calving events occur, but with some inland thinning ( $\sim 1 \text{ m a}^{-1}$ ) similar to observations (Fig. 2: Simonsen and Sørensen, 2017). It was not meant to replicate steady-state conditions, i.e. total mass balance equal to zero. First, we allowed for a short period of model relaxation, as experience has shown that transient runs tend to exhibit a short period of anonymously high rates-of-change following initialization. We calculated the approximate total mass balance ( $M_{\text{total}}$ ) at the beginning of this run, based on the total melt flux ( $M_{\text{basal}}$  and  $M_{\text{surface}}$ ) minus the approximate calving flux ( $M_{\text{calving}}$ ). This is not calculated explicitly within our model as we do not account for calving but is instead based on fixed (width  $\times$  height  $\times$  velocity) at the glacier terminus:

$$M_{\text{total}} = M_{\text{basal}} + M_{\text{surface}} - M_{\text{calving}} \quad (2)$$

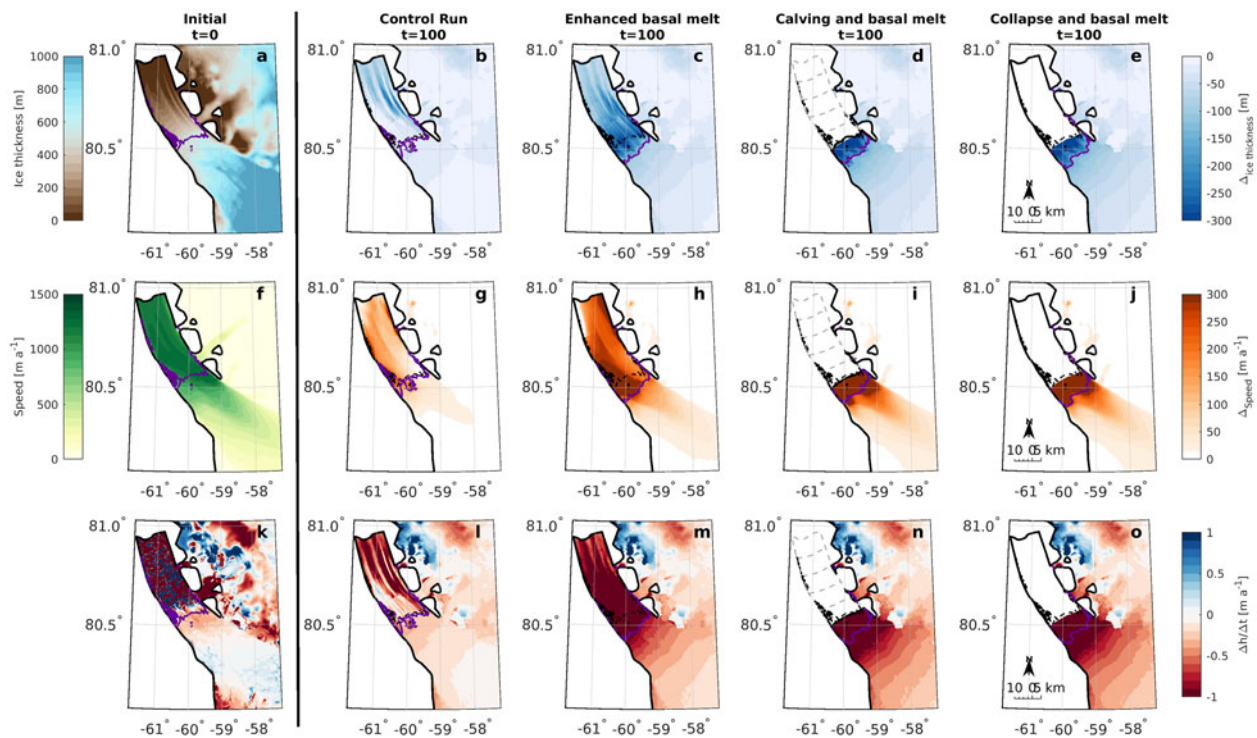
At time 0 our estimated calving flux is  $0.99 \text{ Gt a}^{-1}$ , total melt flux is  $-3.2 \text{ Gt a}^{-1}$  and total mass balance is therefore  $-4.19 \text{ Gt a}^{-1}$ . Initial elevation changes were in good agreement with Cryosat 2.2 elevation changes from 2011 to 2016 (Fig. 2), albeit slightly lower due to imposing near to steady-state melt rates (see Fig. S4). Over the entire control run there was almost no change from our initial mass balance. These early changes in mass balance over the first 10 years are shown in Figure S6. However, some variability occurred within the first 10 years, so we discarded these as model drift and time=10 years was the starting point for all further experiments. We note that our final results are not sensitive to the selected duration of this initial relaxation period as our total modelling time is several times larger, and the changes within the first 10 years are small with respect to the total mass balance.

After running the model for 10 years, to account for the period of model drift, we ran our control run forward in time for 100 years, during which there was no change in melt rates or horizontal extent of the ice shelf. The terminus position is fixed through time and is not allowed to advance or retreat freely. Throughout this, the grounding line position was stable, and the flux across the grounding line ( $9.85 \text{ Gt a}^{-1}$ ) remained similar to observations (Wilson and others, 2017). As no perturbation in ice shelf extent was imposed, thinning rates remained small ( $-0.17 \text{ m a}^{-1}$ ), acceleration was limited ( $0.26 \text{ m a}^{-2}$ : Figs 3, 4), and the total contribution to sea level rise over 100 years was only  $0.43 \text{ mm}$  (Fig. 5, Table 1).

### Experiments

Following our model initialization and control run, we performed three additional perturbation experiments. These experiments should not necessarily be viewed as projections but were designed to assess the sensitivity of PG to three distinct scenarios of ice shelf evolution over the next 100 years. We note that these experiments only assess the sea level rise contribution associated with ice shelf loss, as in all cases our SMB remains fixed in time. Our three experiments are:

- (1) Enhanced basal melt rates and no change in ice tongue extent
- (2) Enhanced basal melt rates together with prescribed episodic calving
- (3) Immediate ice shelf collapse and enhanced melt in newly floating cells



**Fig. 3.** Top row shows initial ice thickness [m] at time = 0 (a) and plots b–e show the change in ice thickness [m] after 100 years for each of our experiments. The middle row of plots shows initial ice speed (f) in  $\text{m a}^{-1}$  and plots g–j show change in speed [ $\text{m a}^{-1}$ ] after 100 years. The bottom row shows initial thinning rates after the initialization period (k) in  $\text{m a}^{-1}$  where red is thinning and blue is thickening, and plots l–o show thinning rates at the last simulation year (100 years) [ $\text{m a}^{-1}$ ]. In plots a, f and k, the green line represents the initial grounding line position. In all other plots the green line is the position of the grounding line after 100 years for each experiment. In d, i and n, the dotted lines represent calved icebergs at 5-year intervals between 5 and 25 years.

Each of these experiments began after the 10-year initialization period, and we ran the model forward in time for 100 years. Our first experiment aims to assess the role of enhanced basal melt rates, and associated thinning of the shelf but with no perturbation in horizontal ice shelf extent. At the beginning of the simulation, we increased the maximum basal melt rate beneath the PGIS to  $m_{\text{max}} = 50 \text{ m a}^{-1}$ , in line with the high-end of recent observational estimates (Wilson and others, 2017). This maximum melt rate was then kept fixed throughout the experiment, despite changes in ice shelf thickness. It is possible that ocean warming in the future may enhance melt rates further at PG, but given the uncertainties associated with projecting future basal melt rates, we merely assess the impact of current melt conditions over the next 100 years. As a result, these estimates likely represent the low-end member response of PG to future ice tongue melt.

Our second experiment takes the enhanced basal melting from experiment one and additionally removed five large sections of the ice tongue ( $\sim 180 \text{ km}^2$ ) at 5-year intervals from 5 to 25 years (Fig. 1). This assumes that PG will continue to lose its ice tongue via episodic calving, similar in size to large calving events in 2010 and 2012 (Münchow and others, 2014). Indeed, a large rift formed in 2016 suggesting calving is imminent (Münchow and others, 2016). As in experiment one, we updated the maximum melt rate to  $50 \text{ m a}^{-1}$  at the beginning of the simulation, and then at 5-year intervals we deactivated elements from our existing mesh, downstream of the new prescribed calving front position. In between, and after these calving front perturbations, we did not impose an additional calving law. Here, we aim to assess the response to current ice shelf retreat and eventual collapse, and not the future evolution once the glacier calves from a grounded terminus.

Our final experiment simulates another scenario of ice shelf loss, by removing it entirely at the beginning of the simulation. Since the early 2000s, several floating ice shelves have collapsed, across both Antarctica (e.g. Scambos and others, 2004) and

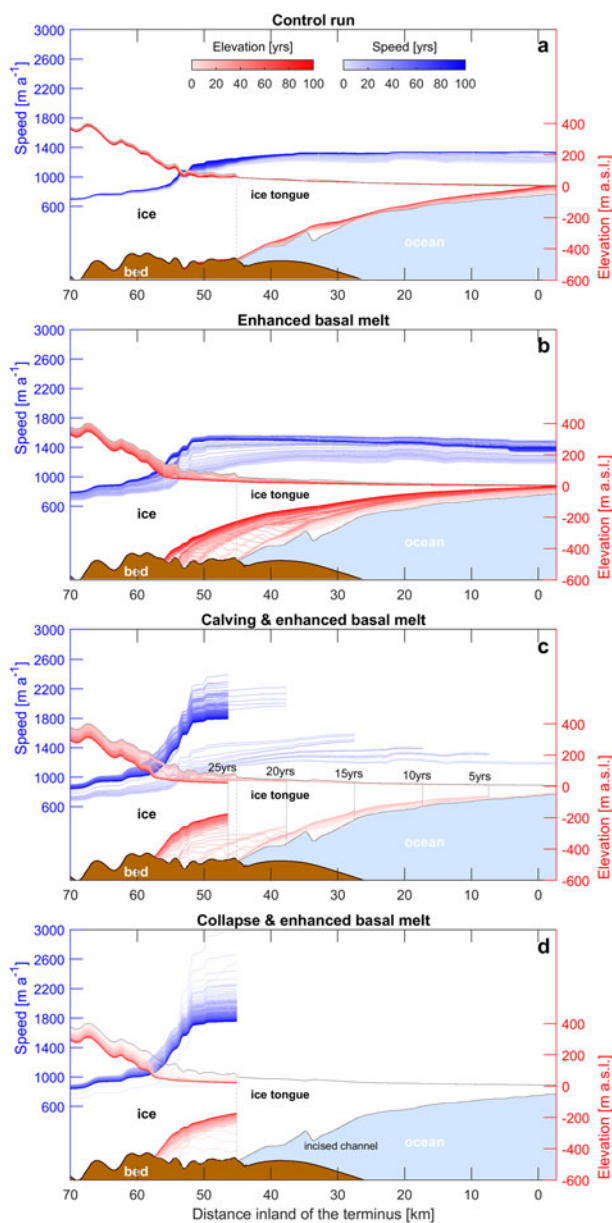
Greenland (Hill and others, 2018a). Washam and others (2018) highlighted an incised channel close to the grounding line of PG (Fig. 4c). Enhanced melting within this basal channel could weaken the PGIS causing it to calve in its entirety. This experiment immediately removed the entire  $\sim 885 \text{ km}^2$  ice shelf at the start of the experiment. After this, we did not prescribe any further changes in ice front position, i.e. no calving law, in order to assess the longevity of the glacier response to initial ice shelf collapse. As the grounding line retreats we apply enhanced basal melt  $m_{\text{max}} = 50 \text{ m a}^{-1}$  to newly floating nodes in the domain, in the same way as in previous experiments.

## Results

### Role of enhanced basal melt

Our first experiment raised basal melt rates beneath the PGIS to range from  $50 \text{ m a}^{-1}$  at the grounding line to  $\sim 5 \text{ m a}^{-1}$  near the terminus (Wilson and others, 2017). Under these high melt conditions, the ice shelf thinned by  $\sim 100\text{--}300 \text{ m}$  (Fig. 3c), accelerated by  $300 \text{ m a}^{-1}$  (Fig. 3h), and thinned by  $2 \text{ m a}^{-1}$  close to the grounding line and either side of streamlined basal channels (Fig. 3m). Greater basal melt-induced thinning of the shelf resulted in 48% more ice loss after 100 years ( $-233 \text{ Gt}$ ) than our control run. This is equivalent to  $0.65 \text{ mm}$  of global mean sea level rise (Table 1).

During the first 20 years of the enhanced melt run, there was limited inland surface lowering or acceleration. However,  $0.2 \text{ km}$  of grounding line retreat led to a  $24 \text{ km}^2$  loss of grounded area (Fig. 5) and initiated positive feedbacks (e.g. acceleration, thinning and retreat) over the following 20 years. Greater thinning took place between 20 and 40 years close to the grounding line ( $188 \text{ m}$ ) compared to our control run (Fig. 4b). Crucially, this thinning likely decreased back-stress at the grounding line, causing it to retreat rapidly ( $6.8 \text{ km}$  from 20 to 40 years) and un-ground  $134 \text{ km}^2$  of ice.



**Fig. 4.** Annual speed (blue) and elevation (red) along the Petermann Glacier centre-line (sampled at 100 m intervals) for each of our model experiments (a–d). Pale to dark blue and pale to dark red represent each year between 0 and 100 for speed and elevation, respectively. The dotted grey line represents the initial grounding line position and the ice ocean and bed extents are from the BedMachine v3 dataset (Morlighem and others, 2017). In plot c, the grey lines are sections of the PGIS removed at 5-year intervals between 5 and 25 years.

Subsequently further inland ice flow speeds increased by 13%, thinning rates rose to  $1 \text{ m a}^{-1}$ , and there was a 16% increase in ice flux across the grounding line (Fig. 6). However, acceleration and thinning were confined to  $\sim 10 \text{ km}$  inland of the initial grounding line (Figs 3, 4). Between 60 and 100 years, acceleration and thinning rates decreased, and the grounding line appeared to stabilize  $\sim 9 \text{ km}$  inland (Fig. 5). Thus, with no further perturbation of the ice shelf (i.e. no further increase in basal melt rates or fracture driven calving), PG approached stable conditions (e.g. constant flow speeds and no further grounding line retreat: Fig. 5) after 60 years.

#### Episodic calving and enhanced basal melt

Our second experiment shows that the gradual loss of buttressing associated with gradual ice tongue collapse and enhanced ice shelf thinning caused a larger stress perturbation at the grounding line

than enhanced basal melting alone. This led to greater inland thinning and acceleration (Figs 3j, o) and a total ice volume loss of 313 Gt (Table 1). Despite greater ice loss, the contribution to global mean sea level rise was still limited to 0.89 mm after 100 years (Fig. 5a).

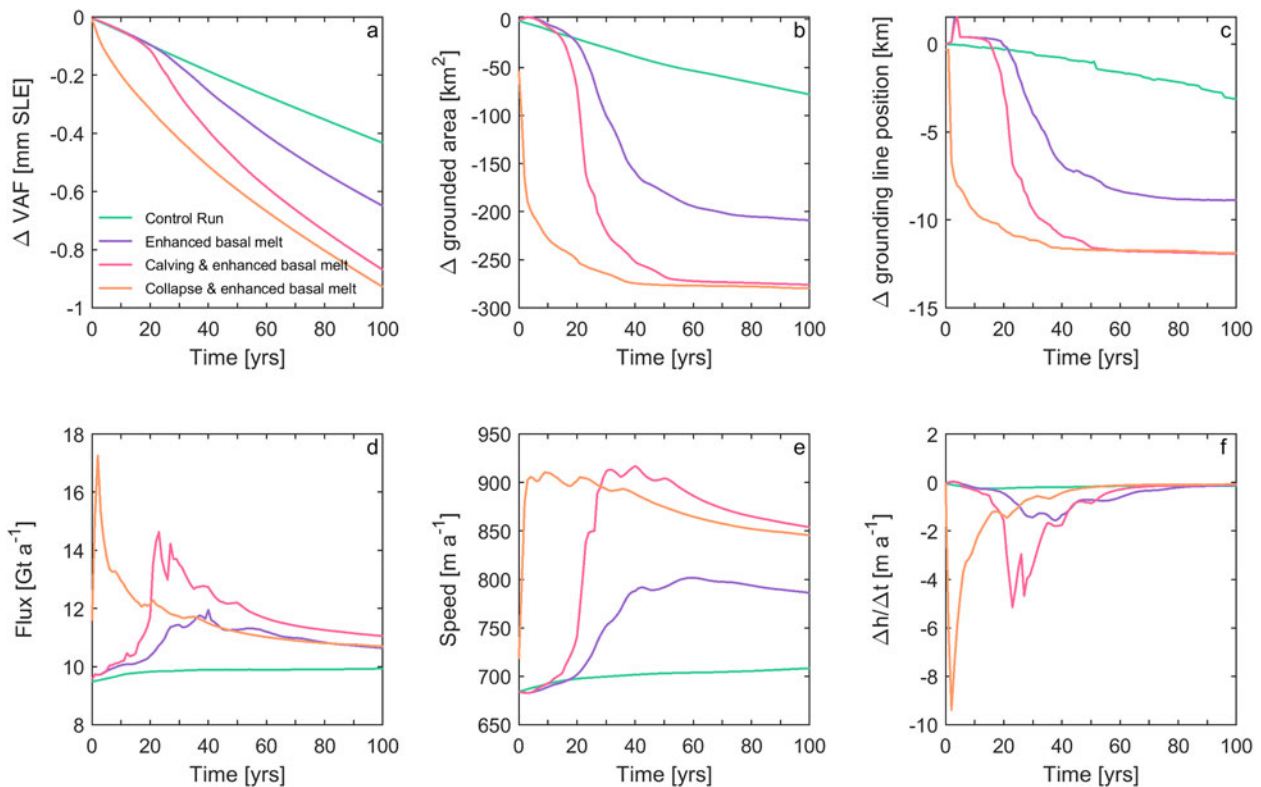
Consistent with earlier work (Nick and others, 2012; Hill and others, 2018b), our results show that the glacier response to calving differs between removing the lower or upper portions of the PGIS. After removing the first three sections of the ice shelf (at 5, 10 and 15 years), ice flow at the terminus accelerated by only 5–10% in the 5 years between each calving event (Fig. 4d). The grounding line simultaneously retreated at  $60 \text{ m a}^{-1}$  (total of 1.2 km), which is similar to retreat in the early stages of our basal melt experiment (Fig. 5c). This resulted in  $46 \text{ km}^2$  loss of grounded area, equivalent to 0.1 mm of sea level rise. However, further inland limited change took place, with only 6% flow acceleration and  $0.05 \text{ m a}^{-2}$  increase in thinning rates (Fig. 5). This indicates that the glacier force balance was not significantly altered by removing these sections of the shelf. In addition, the lower ice shelf includes the large fracture that formed in 2016 (Münchow and others, 2016), which Rückamp and others (2019) showed is likely to have already de-coupled the lower part of the shelf, causing a reduction in buttressing and some speed-up after its formation.

Removing thicker (Fig. 4) and stiffer (Fig. S2) sections of the PGIS closer to the grounding line caused greater loss of contact with the side-walls, and thus a larger reduction in lateral resistive stress acting on grounded ice. Removing the fourth section of the shelf led to terminus acceleration of 41%, which was four times the acceleration after previous calving events. Some terminus deceleration occurred from 23 to 25 years, but speeds remained high further inland (Fig. 5e), and increased by a further  $330 \text{ m a}^{-1}$  at the terminus after the final calving event. Crucially, losing these upper sections of the shelf caused the grounding line to retreat a further  $\sim 8 \text{ km}$  by 30 years (Fig. 5c). Retreat of the grounding line into a region of thicker ice inland led to a 240% increase in thinning rate, 25% flow acceleration and 31% increase in ice flux during 19–30 years (Figs 3, 5). Importantly, this period of dynamic readjustment (inland acceleration thinning and grounding line retreat) lasted  $\sim 10$  years longer than under basal melting alone (Fig. 5). However, after 70 years, PG appeared to have returned to conditions prior to the perturbation, indicated by slow deceleration ( $-0.67 \text{ m a}^{-1}$ ), thinning rates returning to initial levels ( $-0.12 \text{ m a}^{-1}$ ), and the grounding line stabilizing at 3 km further inland of our previous experiments (Fig. 5c).

#### Impact of immediate ice tongue collapse

Our final experiment showed that if the PGIS were to instantly collapse from its current state in 2016, PG would experience increased thinning and acceleration (Figs 3d, i and n) relative to any of our previous experiments but the impact of ice shelf collapse and subsequent enhanced melt would still be limited: the glacier would lose about 333 Gt of ice after 100 years (Table 1). While this is more than double the ice loss from our control run, and greater than removing the ice tongue episodically, it is equivalent to a global mean sea level rise of only 0.92 mm (Fig. 5a).

Our results indicate that an instant removal of the entire ice shelf in contact with the grounding line appeared to cause a greater loss of buttressing than gradual sub-shelf thinning and episodic calving (Experiment 2). This was evident in the first 5 years where the grounding line retreated 8.2 km (Fig. 5c), and there was a near instantaneous increase in ice flux across the grounding line reaching a maximum of  $17 \text{ Gt a}^{-1}$  at year three (Fig. 5d). Substantial surface lowering (31 m) and a 116%



**Fig. 5.** Model results for each of our experiments; control run (green), enhanced basal melt (purple), prescribed calving and enhanced basal melt (pink), and ice tongue collapse and enhanced basal melt (orange). (a) Change in volume above flotation (VAF) in mm of global mean sea level equivalent. (b) Change in grounded area [ $\text{km}^2$ ]. (c) Width-averaged grounding line retreat [ $\text{km}$ ], note some advance associated with re-grounding downstream of the main grounding line position. (d) Annual ice flux [ $\text{Gt a}^{-1}$ ] across the grounding line. (e) Average annual ice flow speeds [ $\text{m a}^{-1}$ ] within a  $134 \text{ km}^2$  square  $\sim 17 \text{ km}$  inland of the grounding line (Fig. 2). (f) Average annual thinning rates (change in thickness ( $h$ ) over time ( $t$ )) in  $\text{m a}^{-1}$  within our sample square.

**Table 1.** Thickness change ( $dh/dt$ ), change in speed between 0 and 100 years and annual acceleration calculated within a square upstream of the grounding line

	$dh/dt$ [ $\text{m a}^{-1}$ ] 0–100 yrs	Change in speed [ $\text{m a}^{-1}$ ] 0–100 yrs	Acceleration [ $\text{m a}^{-1}$ ] 0–100 yrs	Flux [ $\text{Gt a}^{-1}$ ] 0–100 yrs	Mass loss [Gt]	Total SLR [mm]
Control run	−0.17	691	0.26	9.85	157	0.43
Enhanced basal melt	−0.54	763	1.03	10.86	233	0.65
Calving and enhanced basal melt	−0.89	841	1.71	11.64	313	0.87
Collapse and enhanced basal melt	−0.92	873	1.63	11.58	333	0.92

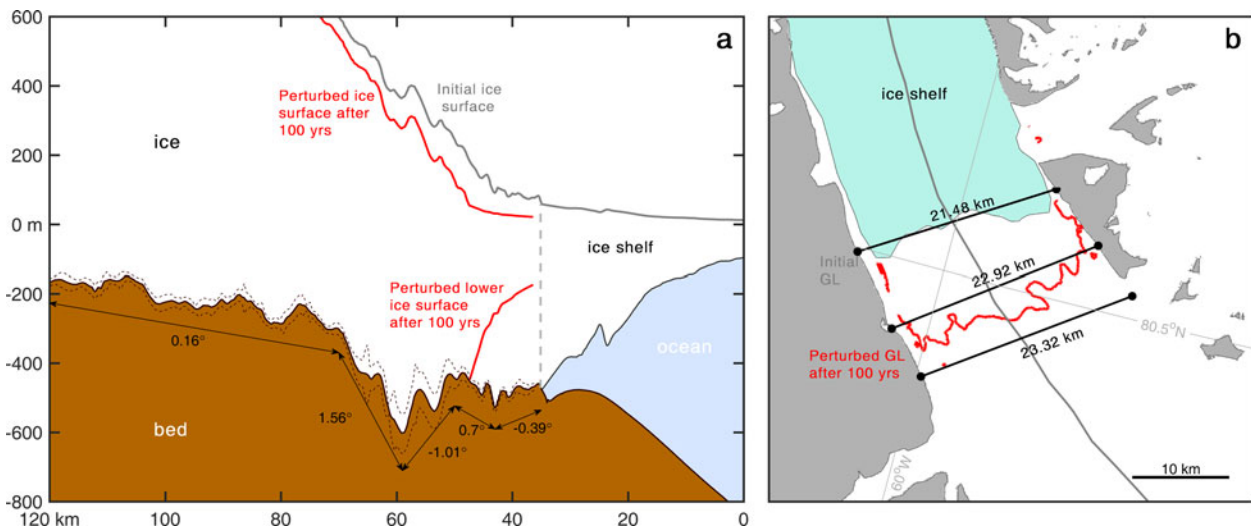
Acceleration is relative to initial velocities after 10-year relaxation period (after 0–10 control run). Flux is average grounding line flux for 0–100 years. Mass loss is the ice volume above flotation lost by the end of the 100-year period.

(+1380  $\text{m a}^{-1}$ ) increase in flow speed at the terminus indicates a loss of back-stress (Fig. 4d). Changes at the terminus propagated inland, where thinning rates increased fivefold (averaging  $5.8 \text{ m a}^{-1}$ ) and speeds increased to  $\sim 900 \text{ m a}^{-1}$  (+33%) over the first 5 years (from our upstream sample square: Fig. 5). After the initial period of acceleration, increased ice flux, and rapid retreat of the grounding line (0–10 years), PG appeared to dynamically adjust to the loss of buttressing. Between 10 and 35 years, grounding line retreat slowed to  $0.08 \text{ km a}^{-1}$  and ice flux decreased to  $11.7 \text{ Gt a}^{-1}$ . During this period ice flow speeds and thinning rates further inland subsided, indicating a reduction in glacier driving stress (Fig. 5d). After 35 years the grounding line occupied a similar position as it did after 50 years in our episodic calving experiment, and remained stable for the remaining 65 years.

## Discussion

Our modelling experiments show that future changes in the extent of the PGIS (via melt only, calving or entire collapse) can cause thinning, acceleration and grounding line retreat. Of

our three scenarios of ice shelf loss, immediate collapse and enhanced basal melting (up to  $50 \text{ m a}^{-1}$ ) as the grounding line retreats, appeared to cause the greatest loss of buttressing and led to a doubling of the sea level rise contribution from 0.43 mm (if current conditions are maintained) to 0.92 mm after 100 years (Table 1). Immediate thinning and acceleration after shelf collapse is consistent with the observed behaviour of Jakobshavn Isbræ (Joughin and others, 2004; Thomas, 2004) and Zachariæ Isstrøm (Mouginot and others, 2015; Hill and others, 2018a) in Greenland, and glacier acceleration following the Larsen B ice shelf collapse in Antarctica (Scambos and others, 2004; De Rydt and others, 2015). However, despite this, PG appeared to adjust to the loss of buttressing after  $\sim 40$  years, after which there was limited grounding line retreat, and without an increase in calving after future collapse the shelf may regrow (Nick and others, 2012). We do not assess that here, but suggest it warrants further investigation. Our other experiments (melt only, and prescribed calving) were able to prolong the dynamic glacier response up to  $\sim 60$  years. However, the response to basal melt alone was relatively muted (0.65 mm of sea level



**Fig. 6.** (a) Centreline profile (shown in grey on b) of ice surface and bed topography of Petermann Glacier. Dashed brown lines show the errors in bed topography extracted along the profile from the BedMachine v3 dataset (Morlighem and others, 2017). Annotated numbers along this profile are the degree of the bed slope between the arrows. We note that the errors in bed topography are small, and do not effect the direction and steepness of the slope along the profile. (b) Plan view of the grounding line region of Petermann Glacier, displaying fjord widths at several locations: at the initial grounding line position, at the final grounding line position after 100 years in our third perturbation experiment, and further inland. We note that there is little change in fjord width between these locations.

rise), primarily due to leaving the calving front position fixed, whereas in reality sub-shelf thinning is likely to act as a precursor to calving (Münchow and others, 2014). While episodic calving of the PGIS (particularly closer to the grounding line) in combination with sub-shelf thinning, caused 0.87 mm of sea level rise, this remains less than immediate collapse, as PG likely had time between calving events to readjust to stress imbalances.

Despite some dynamic change at PG, the global impact on sea level rise remains limited. Hence, the key conclusion from these experiments is that, in all cases, ice tongue perturbations were unable to force long-term instability of PG, i.e. irreversible thinning, acceleration and grounding line retreat. We attribute this insensitivity primarily to a stabilization of the grounding line. In all experiments the grounding line positions retreated to within 3 km of each other (Figs 5c, S3). Crucially, this stabilization limits the sea level rise contribution of PG to <1 mm over the next 100 years. This is much smaller than projections from Jakobshavn Isbræ (2.77–5.7 mm) by 2100 (Bondzio and others, 2017; Guo and others, 2019) and Zachariæ Isstrøm (up to 16 mm in an extreme case: Choi and others, 2017) but is similar to the lowest emissions scenario (A1B) projections at Petermann and Kangerdlugssuaq (~ 1 mm: Nick and others, 2013). We now discuss several factors limiting grounding-line migration and ice loss. These are: (i) bed topography, (ii) lateral confinement/ fjord width, (iii) fixed terminus position and (iv) basal slipperiness.

Bed slope is known to impact stability of glacier grounding lines (Schoof, 2007; Choi and others, 2017) in the absence of additional buttressing from the lateral margins (Gudmundsson and others, 2012; Haseloff and Sergienko, 2018). Initial retreat of PG's grounding line was over a shallow retrograde slope 8 km inland ( $-0.39^\circ$ : Fig. 6a). In all of our experiments we observed a slowdown in grounding line retreat after 50 years (Fig. 5c). This is partly due to the absence of additional forcing, but also due to the transition to a steeper seaward sloping ( $+0.7^\circ$ ) portion of the bed inland ( $\sim 42 - 50$  km inland on Fig. 6a). It is likely that this prograde slope forced the grounding line to stabilize at this position. This is consistent with the observed stability of grounding lines on prograde bed slopes in west Greenland (Catania and others, 2018), and the role of bed topography on the retreat of glacier termini elsewhere in Greenland (Bunce and others, 2018; Brough and others, 2019). At PG, a seaward sloping bed

topography is likely to have been a key control that limited past grounding line retreat (Hogg and others, 2016). In addition, previous modelling experiments have also shown that basal topography may limit 21st century grounding line retreat (Nick and others, 2013). Elsewhere in Greenland, deep bed topography has allowed runaway grounding line retreat after ice shelf collapse. For example, the collapse of Jakobshavn Isbræ's ice shelf was followed by grounding line retreat and acceleration (Joughin and others, 2008, 2014), which is projected to continue throughout the 21st century due to deep bed topography further inland (Bondzio and others, 2017; Guo and others, 2019). Similarly, at Zachariæ Isstrøm, collapse of the ice shelf by 2012 was followed by acceleration, thinning and grounding line retreat down a retrograde bedslope (Mouginot and others, 2015; Hill and others, 2018a). It is also projected to undergo unstable retreat of the grounding line  $\sim 30$  km inland by 2100 and contribute at least 1.7 mm to sea level rise (Choi and others, 2017). However, PG appears unlikely to undergo rapid unstable retreat associated with marine ice-sheet instability as suggested for regions of West Antarctica (e.g. Favier and others, 2014). Instead, PG is likely to behave more similarly to the projected response of 79 North Glacier. Here, Choi and others (2017) showed that substantial grounding line retreat, and thus sea level rise contribution (1.12 mm by 2100) will be prevented by a stabilization of the grounding line at a step in bed topography. Thus, the absence of retrograde bed topography at PG suggests that it is also unlikely to undergo unstable retreat over the next 100 years.

In addition to the role of bed topography, channel width can also modulate grounding line retreat (Jamieson and others, 2012; Åkesson and others, 2018), and has been identified as a key control on the retreat of numerous glaciers using both modern (e.g. Carr and others, 2014; Steiger and others, 2018; Catania and others, 2018) and palaeo records (Jamieson and others, 2014; Stokes and others, 2014). PGIS is well-confined within its narrow fjord, and hence, its collapse leads to a loss of lateral resistive forces and buttressing. Indeed, our results showed inland acceleration and thinning (Figs 4, 5) following ice shelf collapse, which is indicative of a loss of resistive stress at the grounding line. This behaviour contrasts with observations elsewhere in northern Greenland, e.g. C.H. Ostenfeld Glacier. Here, collapse of a laterally unconfined ice shelf did not lead to inland acceleration, which



indicates that the ice shelf provided limited buttressing at the grounding line (Hill and others, 2018a). Importantly, once PG's grounding line has initially retreated in response to an ice tongue perturbation, the fjord width further inland does not vary substantially ( $< 1$  km: Fig. 6b). Hence, it is likely that while the grounding line retreated, there was no significant reduction in lateral drag, which in turn prevented a positive feedback of continued grounding line retreat.

Alongside glacier geometry (bed topography and fjord width) we acknowledge that there are additional factors that may have controlled the final grounding line position. First, in all of our simulations and aside from our prescribed calving front position in experiment three, the terminus position is fixed. It is therefore possible that in the absence of additional forcing (e.g. continuous calving at the grounding line after ice shelf collapse), the glacier readjusted and became stable at the new grounding line position. Secondly, the slipperiness of the bed can also be sensitive to ice shelf buttressing (Gudmundsson, 2003; Schoof, 2007). We acknowledge that our inversion method means our slipperiness estimate is fixed in time and consequently does not allow for regions of low basal drag to migrate inland. Immediately inland of the final grounding line position lies a section of reverse bed slope that may allow for some accelerated retreat as the grounding line moves through this region in the future. Errors in bed topography are small (16 m) compared to ice thickness ( $\sim 700$  m: Fig. 6) along the region of grounding line retreat in our experiments. However, between 50 and 60 km along the glacier centreline, errors in bed elevation increase to 50 m. Given these uncertainties in bed topography, and the limitations outlined above (i.e. fixed terminus and basal slipperiness) we cannot rule out that the grounding line will retreat further over the next 100 years. Crucially, after  $\sim 60$  km (Fig. 6a), the bed topography becomes steep ( $+1.56^\circ$ ) and seaward sloping, before flattening out. Thus, if additional forcing in our experiments had forced the grounding line further inland, we do not anticipate a dramatic increase in PG's contribution to sea level rise, as this steep topography would likely prevent runaway retreat of the grounding line. Further work that directly assesses the sensitivity of PG to bed topography and basal sliding is needed.

## Conclusions

Here, we present the results of three modelling experiments that perturb the extent of the PG ice shelf to explore its sensitivity to various forcings and its dynamic response and potential sea level rise contribution over the next 100 years. Our results have shown that under several scenarios of ice shelf thinning and retreat, unstable rapid retreat of PG's grounding line is unlikely over the next 100 years. Under enhanced basal melt alone, PG will lose 233 Gt of ice, almost 100 Gt more than if current conditions are maintained. Ice loss is greater (313 Gt) if the ice shelf calves away episodically alongside enhanced melt rates, due to a loss of buttressing from the laterally confined portions of the shelf near the grounding line. Immediate collapse of the shelf further increases ice loss to 333 Gt of volume above flotation by 2100, equivalent to 0.92 mm of global mean sea level rise. It appears that glacier geometry is the dominant control on grounding line retreat and the grounding line could stabilize at a rise in bed topography  $\sim 12$  km inland of its current position. This stabilization could prevent a substantial contribution to global mean sea level rise in response to the loss of the ice shelf. The question still remains as to the future stability of PG if the entire ice shelf collapses, and calving then occurs from a grounded terminus. However, unlike glaciers with former ice shelves elsewhere in Greenland (Zachariae Isstrøm and Jakobshavn Isbræ/Sermeq Kujalleq), where deep retrograde beds and widening fjords allowed for

sustained retreat after ice shelf collapse (Mouginot and others, 2015; Choi and others, 2017; Guo and others, 2019), PG's inland geometry (steep prograde bed and narrow fjord: Fig. 6) does not suggest that grounded ice calving will force rapid unstable retreat in the future. Hence, PG may be geometrically constrained from becoming sensitive to calving in the future.

**Acknowledgments.** This research was funded by a Natural Environment Research Council Doctoral Scholarship (grant number: NE/L002590/1) awarded to E. A. Hill through the IAPETUS Doctoral Training Partnership and Newcastle University, UK. The ice flow model ( $\tilde{U}_a$ ) used to conduct this study can be acquired from <http://doi.org/10.5281/zenodo.3706624> (Gudmundsson, 2020). All datasets used to produce the results of this paper are available as follows. The RACMO2.3 Greenland surface mass-balance dataset was provided on request by Brice Noël and Michiel van den Broeke, to whom we are grateful. Additional datasets are freely available via the following sources: the Operation IceBridge BedMachine version 3 dataset (Morlighem and others, 2017) available at [doi.org/10.5067/2CIX82HUV88Y](https://doi.org/10.5067/2CIX82HUV88Y), and Greenland annual ice-sheet velocities (Joughin and others, 2010b) from the MEASUREs program available at [doi.org/10.5067/OC7B04ZM9G6Q](https://doi.org/10.5067/OC7B04ZM9G6Q). We are grateful to the Editor and two anonymous reviewers for their comments on the manuscript.

**Supplementary material.** The supplementary material for this article can be found at <https://doi.org/10.1017/jog.2020.97>.

## References

- Åkesson H, Nisancioglu KH and Nick FM (2018) Impact of fjord geometry on grounding line stability. *Frontiers in Earth Science* **6**(71), 1–16. doi: [10.3389/feart.2018.00071](https://doi.org/10.3389/feart.2018.00071).
- Bondzio JH and 8 others (2017) The mechanisms behind Jakobshavn Isbræ's acceleration and mass loss: a 3-D thermomechanical model study. *Geophysical Research Letters* **44**(12), 6252–6260. doi: [10.1002/2017GL073309](https://doi.org/10.1002/2017GL073309).
- Brough S, Carr JR, Ross N and Lea JM (2019) Exceptional retreat of kangerlussuaq glacier, East Greenland, between 2016 and 2018. *Frontiers in Earth Science* **7**(123). doi: [10.3389/feart.2019.00123](https://doi.org/10.3389/feart.2019.00123).
- Bunce C, Carr JR, Nienow PW, Ross N and Killick R (2018) Ice front change of marine-terminating outlet glaciers in northwest and southeast Greenland during the 21st century. *Journal of Glaciology* **64**(246), 523–535. doi: [10.1017/jog.2018.44](https://doi.org/10.1017/jog.2018.44).
- Cai C, Rignot E, Menemenlis D and Nakayama Y (2017) Observations and modeling of ocean-induced melt beneath Petermann Glacier Ice Shelf in northwestern Greenland. *Geophysical Research Letters* **44**(16), 8396–8403. doi: [10.1002/2017GL073711](https://doi.org/10.1002/2017GL073711).
- Carr JR, Stokes C and Vieli A (2014) Recent retreat of major outlet glaciers on Novaya Zemlya, Russian Arctic, influenced by fjord geometry and sea-ice conditions. *Journal of Glaciology* **60**(219), 155–170. doi: [10.3189/2014JG13J122](https://doi.org/10.3189/2014JG13J122).
- Catania GA and 7 others (2018) Geometric controls on tidewater glacier retreat in Central Western Greenland. *Journal of Geophysical Research: Earth Surface*, **123**(8), 2024–2038. doi: [10.1029/2017JF004499](https://doi.org/10.1029/2017JF004499).
- Choi Y, Morlighem M, Rignot E, Mouginot J and Wood M (2017) Modeling the response of Nioghalvfjærdsfjorden and Zachariae Isstrøm glaciers, Greenland, to ocean forcing over the next century. *Geophysical Research Letters* **44**(21), 11,071–11,079. doi: [10.1002/2017GL075174](https://doi.org/10.1002/2017GL075174).
- Cornford SL and 8 others (2013) Adaptive mesh, finite volume modeling of marine ice sheets. *Journal of Computational Physics* **232**(1), 529–549. doi: [10.1016/j.jcp.2012.08.037](https://doi.org/10.1016/j.jcp.2012.08.037).
- De Rydt J, Gudmundsson GH, Rott H and Bamber JL (2015) Modeling the instantaneous response of glaciers after the collapse of the Larsen B Ice Shelf. *Geophysical Research Letters* **42**(13), 5355–5363. doi: [10.1002/2015GL064355](https://doi.org/10.1002/2015GL064355).
- Durand G, Gagliardini O, Zwinger T, Meur EL and Hindmarsh RC (2009) Full Stokes modeling of marine ice sheets: Influence of the grid size. *Annals of Glaciology* **50**(52), 109–114. doi: [10.3189/172756409789624283](https://doi.org/10.3189/172756409789624283).
- Engwirda D (2014) *Locally Optimal Delaunay-Refinement and Optimisation-Based Mesh Generation* (Ph.D thesis). School of Mathematics and Statistics, University of Sydney.
- Favier L and 8 others (2014) Retreat of Pine Island Glacier controlled by marine ice-sheet instability. *Nature Climate Change* **4**(2), 117–121. doi: [10.1038/nclimate2094](https://doi.org/10.1038/nclimate2094).

- Glen JW** (1955) The creep of polycrystalline ice. *Proceedings of the Royal Society of London. Series A. Mathematical and Physical Sciences* **228** (1175), 519–538. doi: [10.1098/rspa.1955.0066](https://doi.org/10.1098/rspa.1955.0066).
- Goldberg D, Holland DM and Schoof C** (2009) Grounding line movement and ice shelf buttressing in marine ice sheets. *Journal of Geophysical Research: Earth Surface* **114**(4), 1–23. doi: [10.1029/2008JF001227](https://doi.org/10.1029/2008JF001227).
- Gudmundsson GH** (2003) Transmission of basal variability to a glacier surface. *Journal of Geophysical Research: Solid Earth* **108**(B5), 1–19. doi: [10.1029/2002jb002107](https://doi.org/10.1029/2002jb002107).
- Gudmundsson GH** (2013) Ice-shelf buttressing and the stability of marine ice sheets. *The Cryosphere* **7**(2), 647–655. doi: [10.5194/tc-7-647-2013](https://doi.org/10.5194/tc-7-647-2013).
- Gudmundsson GH** (2020) GHILMAR/G/UaSource: Ua2019b (version v2019b). doi: [10.5281/zenodo.3706624](https://doi.org/10.5281/zenodo.3706624).
- Gudmundsson GH, Krug J, Durand G, Favier L and Gagliardini O** (2012) The stability of grounding lines on retrograde slopes. *The Cryosphere* **6**(6), 1497–1505. doi: [10.5194/tc-6-1497-2012](https://doi.org/10.5194/tc-6-1497-2012).
- Gudmundsson GH, Paolo FS, Adusumilli S and Fricker HA** (2019) Instantaneous Antarctic Ice Sheet mass loss driven by thinning ice shelves. *Geophysical Research Letters* **46**(23), 13903–13909. doi: [10.1029/2019GL085027](https://doi.org/10.1029/2019GL085027).
- Guo X, Zhao L, Gladstone RM, Sun S and Moore JC** (2019) Simulated retreat of Jakobshavn Isbræ during the 21st century. *The Cryosphere* **13**(11), 3139–3153. doi: [10.5194/tc-13-3139-2019](https://doi.org/10.5194/tc-13-3139-2019).
- Haseloff M and Sergienko OV** (2018) The effect of buttressing on grounding line dynamics. *Journal of Glaciology* **64**(245), 417–431. doi: [10.1017/jog.2018.30](https://doi.org/10.1017/jog.2018.30).
- Hill EA, Carr JR and Stokes CR** (2017) A review of recent changes in major marine-terminating outlet glaciers in Northern Greenland. *Frontiers in Earth Science* **4**(111), 1–23. doi: [10.3389/feart.2016.00111](https://doi.org/10.3389/feart.2016.00111).
- Hill EA, Carr JR, Stokes CR and Gudmundsson GH** (2018a) Dynamic changes in outlet glaciers in northern Greenland from 1948 to 2015. *The Cryosphere* **12**, 3243–3263. doi: [10.5194/tc-12-3243-2018](https://doi.org/10.5194/tc-12-3243-2018).
- Hill EA, Gudmundsson GH, Carr JR and Stokes CR** (2018b) Velocity response of Petermann Glacier, northwest Greenland, to past and future calving events. *The Cryosphere* **12**(12), 3907–3921. doi: [10.5194/tc-12-3907-2018](https://doi.org/10.5194/tc-12-3907-2018).
- Hogg AE, Shepherd A, Gourmelen N and Engdahl M** (2016) Grounding line migration from 1992 to 2011 on Petermann Glacier, North-West Greenland. *Journal of Glaciology* **62**(236), 1104–1114. doi: [10.1017/jog.2016.83](https://doi.org/10.1017/jog.2016.83).
- Howat IM, Joughin I and Scambos TA** (2007) Rapid changes in ice discharge from Greenland outlet glaciers. *Science* **315**(5818), 1559–1561. doi: [10.1126/science.1138478](https://doi.org/10.1126/science.1138478).
- Jakobsson M and 11 others** (2018) The Holocene retreat dynamics and stability of Petermann Glacier in northwest Greenland. *Nature Communications* **9**(1). doi: [10.1038/s41467-018-04573-2](https://doi.org/10.1038/s41467-018-04573-2).
- Jamieson SSR and 6 others** (2012) Ice-stream stability on a reverse bed slope. *Nature Geoscience* **5**(11), 799–802. doi: [10.1038/NGEO1600](https://doi.org/10.1038/NGEO1600).
- Jamieson SSR and 5 others** (2014) Understanding controls on rapid ice-stream retreat during the last deglaciation of Marguerite Bay, Antarctica, using a numerical model. *Journal of Geophysical Research: Earth Surface* **119**(2), 247–263. doi: [10.1002/2013JF002934](https://doi.org/10.1002/2013JF002934).
- Johannessen OM, Babiker M and Miles MW** (2013) Unprecedented retreat in a 50-year observational record for Petermann. *Atmospheric and Oceanic Science Letters* **6**(5), 259–265. doi: [10.3878/j.issn.1674-2834.13.0021](https://doi.org/10.3878/j.issn.1674-2834.13.0021).
- Johnson HL, Münchow A, Falkner KK and Melling H** (2011) Ocean circulation and properties in Petermann Fjord, Greenland. *Journal of Geophysical Research: Oceans* **116**(1), 1–18. doi: [10.1029/2010JC006519](https://doi.org/10.1029/2010JC006519).
- Joughin I and 7 others** (2008) Continued evolution of Jakobshavn Isbræ following its rapid speedup. *Journal of Geophysical Research: Earth Surface* **113**(4), 1–14. doi: [10.1029/2008JF001023](https://doi.org/10.1029/2008JF001023).
- Joughin I, Abdalati W and Fahnestock MA** (2004) Large fluctuations in speed on Greenland's Jakobshavn Isbræ glacier. *Nature* **432**, 608–610. doi: [10.1038/nature03130](https://doi.org/10.1038/nature03130).
- Joughin I, Smith BE and Holland DM** (2010a) Sensitivity of 21st century sea level to ocean-induced thinning of Pine Island Glacier, Antarctica. *Geophysical Research Letters* **37**(20), 1–5. doi: [10.1029/2010GL044819](https://doi.org/10.1029/2010GL044819).
- Joughin I, Smith BE, Howat IM, Scambos T and Moon T** (2010b) Greenland flow variability from ice-sheet-wide velocity mapping. *Journal of Glaciology* **56**(197), 415–430. doi: [10.3189/002214310792447734](https://doi.org/10.3189/002214310792447734).
- Joughin I, Smith BE, Shean DE and Floricioiu D** (2014) Brief communication: Further summer speedup of Jakobshavn Isbræ. *The Cryosphere* **8**(1), 209–214. doi: [10.5194/tc-8-209-2014](https://doi.org/10.5194/tc-8-209-2014).
- MacAyeal DR** (1989) Large-scale ice flow over a viscous basal sediment: Theory and application to Ice Stream B, Antarctica. *Journal of Geophysical Research: Solid Earth* **94**(B4), 4071–4087. doi: [10.1029/JB094iB04p04071](https://doi.org/10.1029/JB094iB04p04071).
- Miles B, Stokes C and Jamieson S** (2018) Velocity increases at Cook Glacier, East Antarctica, linked to ice shelf loss and a subglacial flood event. *The Cryosphere* **12**(10), 3123–3136. doi: [10.5194/tc-12-3123-2018](https://doi.org/10.5194/tc-12-3123-2018).
- Moon T, Joughin I, Smith B and Howat I** (2012) 21st-century evolution of Greenland outlet glacier velocities. *Science* **336**(6081), 576–578. doi: [10.1126/science.1219985](https://doi.org/10.1126/science.1219985).
- Morland LW** (1987) *Unconfined Ice-Shelf Flow*. In van der Veen CJ and Oerlemans J (eds), *Dynamics of the West Antarctic Ice Sheet*. Dordrecht, Netherlands: Springer. pp. 99–116. doi: [10.1007/978-94-009-3745-1\\_6](https://doi.org/10.1007/978-94-009-3745-1_6).
- Morlighem M and 31 others** (2017) BedMachine v3: complete bed topography and ocean bathymetry mapping of Greenland from multibeam echo sounding combined with mass conservation. *Geophysical Research Letters* **44**(21), 051–061. doi: [10.1002/2017GL074954](https://doi.org/10.1002/2017GL074954).
- Mouginot J and 7 others** (2015) Fast retreat of Zachariæ Isstrøm, northeast Greenland. *Science* **350**, 1357–1361. doi: [10.1126/science.aac7111](https://doi.org/10.1126/science.aac7111).
- Münchow A, Falkner K, Melling H, Rabe B and Johnson H** (2011) Ocean warming of Nares Strait bottom waters off northwest Greenland, 2003–2009. *Oceanography* **24**(3), 114–123. doi: [10.5670/oceanog.2011.62](https://doi.org/10.5670/oceanog.2011.62).
- Münchow A, Padman L and Fricker HA** (2014) Interannual changes of the floating ice shelf of Petermann Gletscher, North Greenland, from 2000 to 2012. *Journal of Glaciology* **60**(221), 489–499. doi: [10.3189/2014JG13J135](https://doi.org/10.3189/2014JG13J135).
- Münchow A, Padman L, Washam P and Nicholls K** (2016) The ice shelf of Petermann Gletscher, North Greenland, and its connection to the Arctic and Atlantic Oceans. *Oceanography* **29**(4), 84–95. doi: [10.5670/oceanog.2016.101](https://doi.org/10.5670/oceanog.2016.101).
- Nick FM and 8 others** (2012) The response of Petermann Glacier, Greenland, to large calving events, and its future stability in the context of atmospheric and oceanic warming. *Journal of Glaciology* **58**(208), 229–239. doi: [10.3189/2012JG11J242](https://doi.org/10.3189/2012JG11J242).
- Nick FM and 7 others** (2013) Future sea-level rise from Greenland's main outlet glaciers in a warming climate. *Nature* **497**(7448), 235–238. doi: [10.1038/nature12068](https://doi.org/10.1038/nature12068).
- Nick FM, Van Der Veen CJ, Vieli A and Benn DI** (2010) A physically based calving model applied to marine outlet glaciers and implications for the glacier dynamics. *Journal of Glaciology* **56**(199), 781–794. doi: [10.3189/002214310794457344](https://doi.org/10.3189/002214310794457344).
- Nick FM, Vieli A, Howat IM and Joughin I** (2009) Large-scale changes in Greenland outlet glacier dynamics triggered at the terminus. *Nature Geoscience* **2**(2), 110–114. doi: [10.1038/ngeo394](https://doi.org/10.1038/ngeo394).
- Noël B and 6 others** (2016) A daily, 1 km resolution data set of downscaled Greenland ice sheet surface mass balance (1958–2015). *The Cryosphere* **10**(5), 2361–2377. doi: [10.5194/tc-10-2361-2016](https://doi.org/10.5194/tc-10-2361-2016).
- Paolo FS, Fricker HA and Padman L** (2015) Volume loss from Antarctic ice shelves is accelerating. *Science* **348**(6232), 327–331. doi: [10.1126/science.aaa0940](https://doi.org/10.1126/science.aaa0940).
- Pattyn F and 18 others** (2012) Results of the marine ice sheet model inter-comparison project, MISIMP. *The Cryosphere* **6**(3), 573–588. doi: [10.5194/tc-6-573-2012](https://doi.org/10.5194/tc-6-573-2012).
- Reese R, Gudmundsson GH, Levermann A and Winkelmann R** (2018a) The far reach of ice-shelf thinning in Antarctica. *Nature Climate Change* **8** (January), 53–57. doi: [10.1038/s41558-017-0020-x](https://doi.org/10.1038/s41558-017-0020-x).
- Reese R, Winkelmann R and Gudmundsson GH** (2018b) Grounding-line flux formula applied as a flux condition in numerical simulations fails for buttressed Antarctic ice streams. *The Cryosphere* **12**, 3229–3242. doi: [10.5194/tc-12-3229-2018](https://doi.org/10.5194/tc-12-3229-2018).
- Rignot E, Box JE, Burgess E and Hanna E** (2008) Mass balance of the Greenland ice sheet from 1958 to 2007. *Geophysical Research Letters* **35**(20), 1–5. doi: [10.1029/2008GL035417](https://doi.org/10.1029/2008GL035417).
- Rignot E, Mouginot J, Morlighem M, Seroussi H and Scheuchl B** (2014) Widespread, rapid grounding line retreat of Pine Island, Thwaites, Smith, and Kohler glaciers, West Antarctica, from 1992 to 2011. *Geophysical Research Letters* **41**(10), 3502–3509. doi: [10.1002/2014GL060140](https://doi.org/10.1002/2014GL060140).
- Rignot E and Steffen K** (2008) Channelized bottom melting and stability of floating ice shelves. *Geophysical Research Letters* **35**(2), 2–6. doi: [10.1029/2007GL031765](https://doi.org/10.1029/2007GL031765).
- Rückamp M, Neckel N, Berger S, Humbert A and Helm V** (2019) Calving induced speedup of Petermann glacier. *Journal of Geophysical Research: Earth Surface* **124**(1), 216–228. doi: [10.1029/2018JF004775](https://doi.org/10.1029/2018JF004775).
- Scambos TA, Bohlander JA, Shuman CA and Skvarca P** (2004) Glacier acceleration and thinning after ice shelf collapse in the Larsen B embayment,

- Antarctica. *Geophysical Research Letters* **31**(18), 2001–2004. doi: [10.1029/2004GL020670](https://doi.org/10.1029/2004GL020670).
- Schoof C** (2007) Ice sheet grounding line dynamics: steady states, stability, and hysteresis. *Journal of Geophysical Research: Earth Surface* **112**(3), 1–19. doi: [10.1029/2006JF000664](https://doi.org/10.1029/2006JF000664).
- Schoof C, Davis AD and Popa TV** (2017) Boundary layer models for calving marine outlet glaciers. *The Cryosphere* **11**(5), 2283–2303. doi: [10.5194/tc-11-2283-2017](https://doi.org/10.5194/tc-11-2283-2017).
- Seroussi H and Morlighem M** (2018) Representation of basal melting at the grounding line in ice flow models. *The Cryosphere* **12**(10), 3085–3096. doi: [10.5194/tc-12-3085-2018](https://doi.org/10.5194/tc-12-3085-2018).
- Shroyer EL, Padman L, Samelson RM, Münchow A and Stearns LA** (2017) Seasonal control of Petermann Gletscher ice-shelf melt by the ocean's response to sea-ice cover in Nares Strait. *Journal of Glaciology* **63**(238), 324–330. doi: [10.1017/jog.2016.140](https://doi.org/10.1017/jog.2016.140).
- Simonsen SB and Sørensen LS** (2017) Implications of changing scattering properties on Greenland ice sheet volume change from Cryosat-2 altimetry. *Remote Sensing of Environment* **190**, 207–216. doi: [10.1016/j.rse.2016.12.012](https://doi.org/10.1016/j.rse.2016.12.012).
- Steiger N, Nisancioglu KH, Åkesson H, De Fleurian B and Nick FM** (2018) Simulated retreat of Jakobshavn Isbræ since the Little Ice Age controlled by geometry. *The Cryosphere* **12**, 2249–2266. doi: [10.5194/tc-2017-151](https://doi.org/10.5194/tc-2017-151).
- Stokes CR, Corner GD, Winsborrow MCM, Husum K and Andreassen K** (2014) Asynchronous response of marine-terminating outlet glaciers during deglaciation of the Fennoscandian ice sheet. *Geology* **42**(5), 455–458. doi: [10.1130/G35299.1](https://doi.org/10.1130/G35299.1).
- Thomas R** (2004) Force perturbation analysis of recent thinning and acceleration of Jakobshavn Isbrae, Greenland. *Journal of Glaciology* **50**(168), 57–66. doi: [10.3189/172756504781830321](https://doi.org/10.3189/172756504781830321).
- Washam P, Münchow A and Nicholls KW** (2018) A decade of ocean changes impacting the ice shelf of Petermann Gletscher, Greenland. *Journal of Physical Oceanography* **48**(10), 2477–2493. doi: [10.1175/JPO-D-17-0181.1](https://doi.org/10.1175/JPO-D-17-0181.1).
- Weertman J** (1957) On the sliding of glaciers. *Journal of Glaciology* **3**(21), 33–38. doi: [10.3189/S0022143000024709](https://doi.org/10.3189/S0022143000024709).
- Wilson N, Straneo F and Heimbach P** (2017) Satellite-derived submarine melt rates and mass balance (2011–2015) for Greenland's largest remaining ice tongues. *The Cryosphere* **11**(6), 2773–2782. doi: [10.5194/tc-11-2773-2017](https://doi.org/10.5194/tc-11-2773-2017).