

## Epidemiology of Sindbis virus infections in Finland 1981–96: possible factors explaining a peculiar disease pattern

M. BRUMMER-KORVENKONTIO<sup>1,2</sup>, O. VAPALAHTI<sup>1,5\*</sup>, P. KUUSISTO<sup>3</sup>,  
P. SAIKKU<sup>4</sup>, T. MANNI<sup>1</sup>, P. KOSKELA<sup>4</sup>, T. NYGREN<sup>6</sup>,  
H. BRUMMER-KORVENKONTIO<sup>7</sup> AND A. VAHERI<sup>1,5</sup>

<sup>1</sup>Haartman Institute, Department of Virology, University of Helsinki, Helsinki, Finland

<sup>2</sup>Tvärminne Zoological Station, University of Helsinki, Hanko, Finland

<sup>3</sup>Ilomantsi Health Care Centre, Ilomantsi, Finland

<sup>4</sup>National Public Health Institute, Oulu, Finland

<sup>5</sup>HUCH Laboratory Diagnostics, Helsinki, Finland

<sup>6</sup>Finnish Game and Fisheries Research Institute, Game Research Station, Ilomantsi, Finland

<sup>7</sup>National Public Health Institute, Helsinki, Finland

(Accepted 28 April 2002)

### SUMMARY

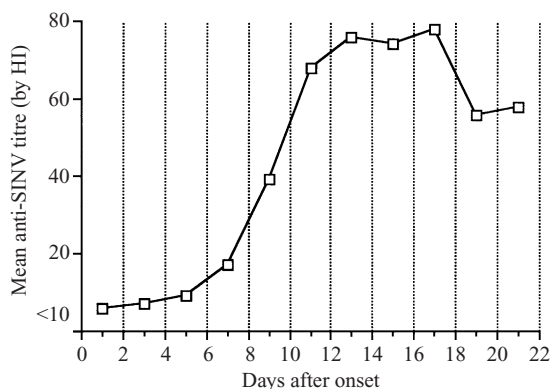
Pogosta disease (PD), an epidemic rash-arthritis occurring in late summer is caused by Sindbis virus (SINV) and is transmitted to humans by mosquitoes. Altogether 2183 PD cases were serologically confirmed 1981–96 in Finland, with an annual incidence of 2.7/100000 (18 in the most endemic area of Northern Karelia). The annual average was 136 (varying from 1 to 1282) with epidemics occurring in August–September with a 7-year interval. Studies on 6320 patients with suspected rubella (1973–89) revealed 107 PD cases. The depth of snow cover and the temperature in May–July seemed to predict the number of cases. The morbidity was highest in 45- to 65-year-old females and lowest in children. Subclinical SINV infections were 17 times more common than the clinical ones. The SINV-antibody prevalence in fertile-age females was 0.6% in 1992; the estimated seroprevalence in Finland is about 2%. Among game animals the tetraonids (black grouse and capercaillie) had the highest seroprevalence (65%) in the epidemic year of 1981.

### INTRODUCTION

Sindbis virus (SINV) is a mosquito-borne, enveloped RNA virus in the genus *Alphavirus* of family *Togaviridae*. The first evidence of SINV activity in Europe was the detection of two Finnish SINV antibody-positive individuals in 1965 [1,2]. The virus found its disease in 1980, when antibodies and diagnostic titre rises against SINV were detected in the sera from Finnish and Swedish patients with epidemic rash-arthritis known as ‘Pogosta disease’ (PD) or ‘August–September disease’ at the Department of Virology,

University of Helsinki [3–7]. The disease was named after the local name of Ilomantsi parish, ‘Pogosta’. The viral aetiology was subsequently confirmed in Sweden [8]. Niklasson et al. [9] succeeded to isolate SINV (Edsbyn strain), also known as Ockelbo virus, from *Culiseta* and *Culex* mosquitoes in Sweden and also from birds. In Russian Karelia ‘Karelian fever’, identical to Pogosta and Ockelbo diseases, was recognized in the early 1980s [10] and the virus was isolated from a pool of *Aedes* sp. [11]. All SINV strains show more than 88% nucleotide identity [12]. Recently, Lundström [13], in a review on SINV in Western Europe, notes that ‘although there is variation among strains from different geographical

\* Author for correspondence: Haartman Institute, P.O. Box 21 (Haartmaninkatu 3), FIN-00014 University of Helsinki, Finland.



**Fig. 1.** Kinetics of Sindbis virus antibody titres as measured by the hemagglutination inhibition (HI) method at various time points after onset of symptoms of Pogosta disease (the values have been calculated as mean titres from sera of 950 patients with PD collected in 1981–93).

regions, the genetic and antigenic similarities show clearly that all Western European strains studied are Sindbis'.

After an incubation period of approximately 1 week, PD is characterized by a maculopapular rash and arthralgia (which may be severe and prolonged) and occasionally fever, as presented recently by Turunen et al. [14] and some dermatological aspects by Autio et al. [15]. Serological diagnosis for PD has been available in Finland since 1980. Some years PD has been of considerable public health significance and the number of patients seeking medical attention has increased to more than 1000 during a 3-month period. Although diagnostic tests for the disease have existed for two decades, the epidemiology of PD in Finland has not previously been reported and the purpose of this paper is to analyse and present the large body of data on epidemiology of PD that has accumulated up to 1996. In the following we will describe the appearance of SINV infections in Finland, the incidence of serologically confirmed PD in different parts of the country, and the SINV antibody status among Finnish people and some game animals. Finally, we will discuss the emergence of SINV in Europe in the 1960s and 1970s.

## METHODS

### Sera

#### *Acute-convalescent serum pairs from patients with rash and arthritis*

A total of 6320 pairs of serum samples from patients with a rubella-like illness but without rubella, taken in

the spring, summer and autumn in 1973–4 (studied retrospectively) and 1980–9 were collected. Nearly all were pregnant females with suspected rubella.

A total of 9842 serum samples of suspected PD patients from all parts of Finland taken from 1981 to 1996. The age and the location of 99% of these patients were known and the exact day of onset of illness was known in 52% of the cases.

#### *Single sera from healthy humans*

Sera from healthy young women of fertile age attending the maternity outpatient clinic during their first trimester of pregnancy were collected during February 1992. Altogether, 5000 successive samples were studied. The mean age was 28.4 years, varying between 14 and 51 years.

Also, 671 sera (54% from males) from the normal healthy population of the rural commune of Ilomantsi were collected. The Ilomantsi parish, where the first clinical cases of PD were detected in 1974, is located in Eastern Finland at the border of Finland and Russia (62° 40' N, 31° 00' E). The serum panel was collected in 1980 and 1982 from all residents of the commune who entered the health-care centre but did not have rash and arthritis.

In addition, 121 animal samples of game mammals and birds, shot in the autumn in the above-mentioned highly endemic area around Ilomantsi in 1981–3 were collected. The bulk of the samples consisted of blood from shot game animals, dried on filter paper slips. In the laboratory the slips were eluted in phosphate-buffered saline [16].

#### *Antibody tests*

The principal method was the haemagglutination inhibition (HI) test using SINV antigen. The virus SINV (strain AR 339, obtained in the 1960s from Dr J. Casals, New Haven, CT, U.S.A.) was grown in BHK21/WI-2 cell monolayers (Eagle's MEM and 0.2% bovine serum albumin) and treated with Tween-ether. Sera absorbed with kaolin and male goose erythrocytes were tested using microtitration equipment at pH 6.0 against 3–4 HA units of SINV (overnight at +4 °C) and a 0.2% suspension of goose erythrocytes. The sera originating from serum banks were first screened in pools of five (each serum diluted 1 in 4), then individually at 1 in 10.

Specific SINV IgM was initially detected by the HI test after separation of immunoglobulin classes by overnight ultracentrifugation in a sucrose gradient.

Table 1. *Acute SINV infections and SINV antibody prevalence in sera from patients with suspected rubella*

Year	Serodiagnoses		Antibody prevalence
	May–July Number (%)	Aug–Sept. Number (%)	Number (%)
1973	nt	0/70 (0)	4/862* (0.5)
1974	nt	2/307 (0.7)	0/305 (0)
1973–4	nt	2/377 (0.5)	4/1167 (0.3)
1980	nt	9/597 (1.5)	4/588 (0.7)
1981	0/472 (0)	36/594 (6.1)	6/1030 (0.6)
1982	0/415 (0)	6/342 (1.8)	11/751 (1.5)
1983	0/167 (0)	6/271 (2.2)	6/432 (1.4)
1984	0/174 (0)	32/308 (10.4)	11/450 (2.4)
1980–4	0/1228 (0)	89/2112 (4.2)	38/3251 (1.2)
1985	0/78 (0)	1/354 (0.3)	8/431 (1.9)
1986	nt	0/117 (0)	3/117 (2.6)
1987	0/311 (0)	0/244 (0)	9/555 (1.6)
1988	0/86 (0)	8/324 (2.5)	6/402 (1.5)
1989	0/179 (0)	7/118 (5.9)	7/290 (2.4)
1985–9	0/654 (0)	16/1157 (1.4)	33/1795 (1.8)

\* Most of the samples (792) collected in October–December.  
nt, Not tested.

Later an enzyme immunoassay (EIA) for both IgM and IgG was used using purified SINV antigen (Ockelbo strain) [17], directly coated on microtitre well plates. In each case, the specificity of the reaction was confirmed by HI titration.

Some antibody findings of humans and all among wildlife were confirmed by the neutralization test. It was performed using SINV (strain AR 339) infection of monolayer tube cultures of Vero cells in tubes (Eagle's MEM with 4% foetal calf serum). The heat-inactivated serum plus a standard dose of virus (100 CPE<sub>50</sub>) was incubated for 1 h at 37 °C. CPE was recorded on the 3rd day p.i.

#### *Meteorological data*

The meteorological observations in Ilomantsi were done by the Finnish Meteorological Institute [18].

## RESULTS

### Serological reaction pattern in Pogosta disease

The specific antibody HI titre was in the majority of cases undetectable (< 10) during the first week after the onset of symptoms. However, it was possible to demonstrate a fourfold titre rise even if the first serum had been taken as late as the tenth day of illness (Fig.

1). In IgG-EIA, all samples were negative during the first week after onset of illness, but positive by the second week. IgM was detectable by EIA in 29% of the first samples taken during the first week after onset of illness from the cases with a diagnostic titre rise.

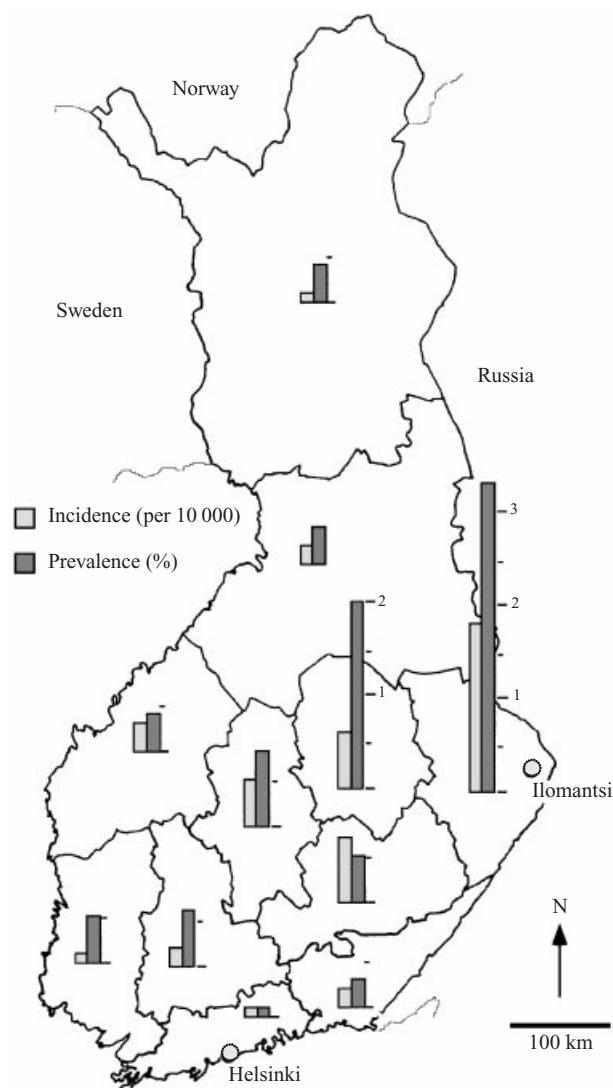
### First Pogosta cases in 1973–80 among patients with suspected rubella

Two out of 307 patients with rubella-like illness, but without rubella, in August 1974 turned out to have PD. Both were females (ages 36 and 47) from Eastern Finland; one had a seroconversion, the other a fourfold titre rise against SINV antigen in the HI test. In the late summer of 1980 we detected 9 SINV infections among 597 patients with rubella-like symptoms.

In the 1980s on average 3% (105/3269) of Finnish patients with suspected rubella had a diagnostic titre rise against SINV in August–September (maximum of 10.4% in 1984), but none out of 1882 in May–July (Table 1).

### Incidence of PD cases in 1981–96

Altogether, 2183 serologically confirmed PD diagnoses were made at the Department of Virology in



**Fig. 2.** Incidence (cases per 10000) of Pogosta disease, and prevalence (%) of SINV antibodies measured by hemagglutination inhibition in sera collected from healthy women attending maternity outpatient clinics in different provinces of Finland.

Helsinki in 1981–96. The annual average was 136 cases, the annual incidence 2.7/100000.

#### Geographical distribution of PD cases

The first cases of PD were detected in the eastern frontier parish of Iloimantsi. Also in subsequent years, most PD cases were found in eastern Finland, especially in Northern Karelia. The annual incidence in Northern Karelia was 18/100000, over six times more than in the whole Finland (Fig. 2). In the epidemic year 1981 there were 73 serologically confirmed

PD cases in the population of 10200 persons in Iloimantsi in Northern Karelia. The northernmost PD cases were located at the Arctic Circle.

#### Sex and age distribution of Pogosta disease cases

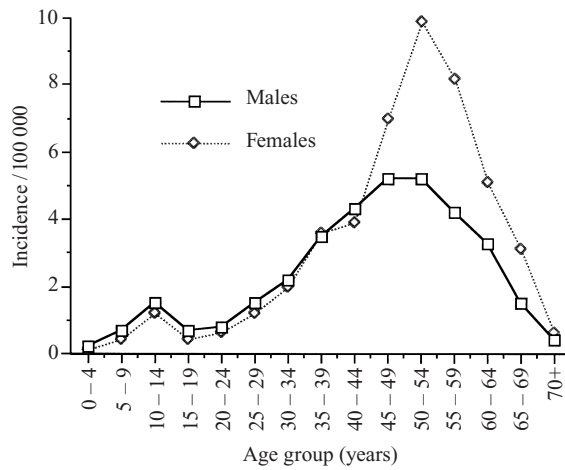
The majority of PD patients (56%) were female. The disease was equally common among males and females up to the age of 45 years, after which the incidence peaked more clearly among females (Fig. 3). Females of approximately 50 years of age were at greatest risk to acquire PD, with an average incidence of 10/100000. The incidence of serologically confirmed cases among children and adolescents was relatively low. Among the serologically diagnosed SINV infections (positive IgM) there were two females who delivered stillborn children. The cases occurred early in the summer, the other case with more documentation had fever and rash in conjunction with the delivery of a stillborn child at gestational week 32. However, there is no statistical support to show a link between the foetal deaths and the SINV infections.

#### Annual distribution of PD

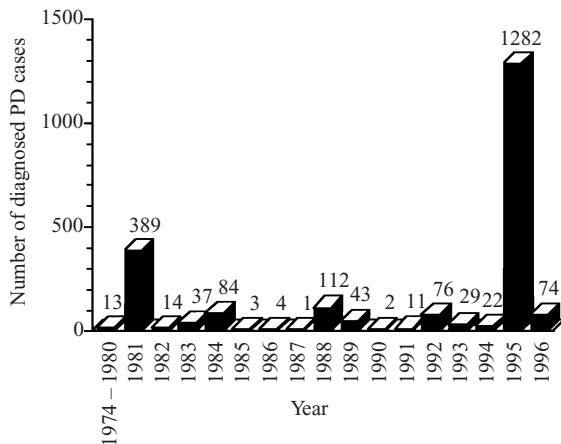
The annual number of PD cases varied extensively, from a single case in 1987 to 1282 confirmed PD cases in 1995 (Fig. 4). The morbidity in the latter year was 26/100000, nearly ten times higher than in the normal year. The mean depth of snow cover during the preceding March–April and the temperature during May to July seems to predict the number of PD cases (Fig. 5*a, b*).

#### Seasonal distribution of PD

Normally the disease appears at the end of July or in the beginning of August, peaks in late August and ceases before October when the temperature decreases and the mosquitoes die or begin to hibernate (Fig. 6*a*). To some extent the daily number of cases seems to correlate with the temperature with about a 10-day delay (Fig. 6*c*). The epidemic pattern varies somewhat from year to year (Fig. 6*b*). However, excluding some early cases in July (in 1984, the spring had been exceptionally warm with the earliest onset of disease on 1 July) and a few later ones during the first days of October (when the autumn has been exceptionally



**Fig. 3.** Mean annual incidence of serologically diagnosed Pogosta disease in different age groups, and by gender, in Finland in 1981-96.



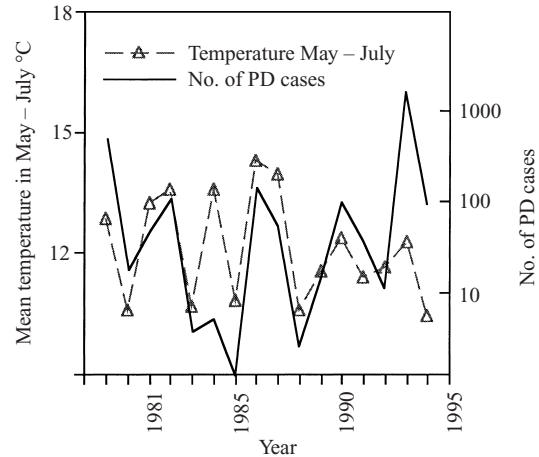
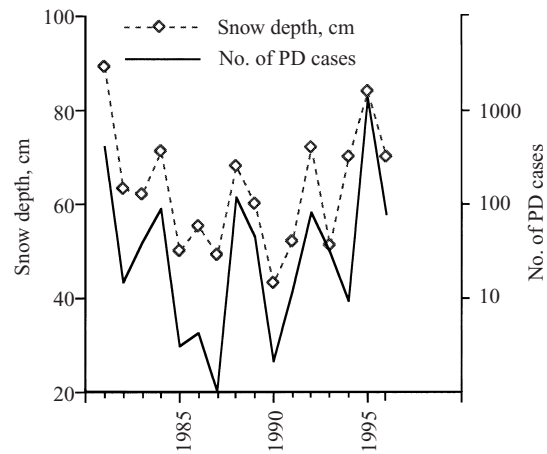
**Fig. 4.** Number of serologically verified cases of Pogosta disease annually in Finland 1974-96.

warm, as in 1995), the disease was strictly restricted to August and September. In the unusually cold summer of 1996 the epidemic started exceptionally late. Our attempts to detect human cases in the spring, caused by hibernated mosquitoes, were unsuccessful (Table 1).

**SINV antibody prevalences in humans**

*Patients with rubella-like symptoms*

The panel consisting of serum pairs of patients with rubella-like symptoms (but rubella was excluded by serology) revealed, in addition to those with SINV titre rises, many with stable titres without specific IgM, suggestive of old exposure. The antibody prevalence in this material was only 0.3% in the



**Fig. 5.** Annual number of cases of Pogosta disease in Finland (logarithmic scale) plotted together with (a) the mean snow depth during 15 March-15 April at Iломantsi; (b) the mean temperature during May-July at Iломantsi.

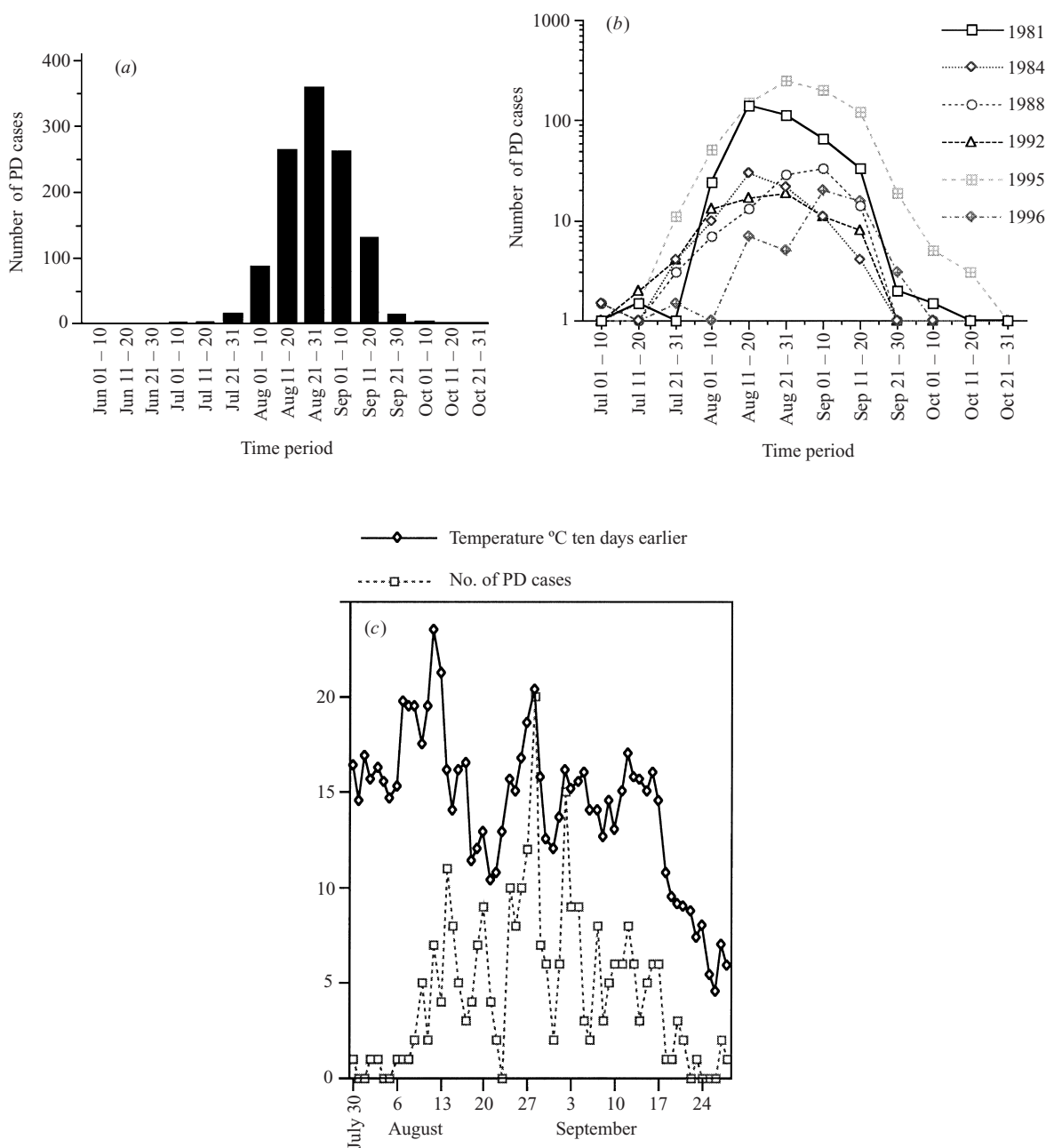
1970s, in the beginning of 1980s it was 0.6%, but increased after the epidemic of 1981 to 1.4% and reached 1.8% at the end of 1980s (Table 1).

*Childbearing-age females in Finland*

In 1992 the average prevalence of SINV antibodies among women entering the maternity outpatient clinics was 0.6% (29/5000). The highest levels were 3.3% in Northern Karelia (Eastern Finland) and 2.0% in the neighbouring province of Kuopio. In other regions SINV seemed to be rarer (< 1.0%) (Fig. 2).

*Normal population in Iломantsi*

The SINV antibody prevalence in the Iломantsi parish at the eastern frontier of Finland was high. In 1982 after the large epidemic of 1981, it was 39% (224/578), higher among males than females, 44% (149/335) vs.



**Fig. 6.** Seasonal distribution of Pogosta disease. (a) Total number of PD cases in Finland in 1981–96 for each 10-day calendar period. (b) Number of PD cases in Finland in selected individual years for each 10-day calendar period. (c) Number of PD cases in southeastern Finland in 1995 as compared to daily mean temperature in Iloimantsi.

31% (75/243). The prevalence increased somewhat with age (Fig. 7a). The total prevalence among adults was in 1982 41% (207/506); in comparison, it had been 29% (27/93) in 1980, before the large epidemic (Fig. 7b).

*SINV antibody prevalences among wild animals*

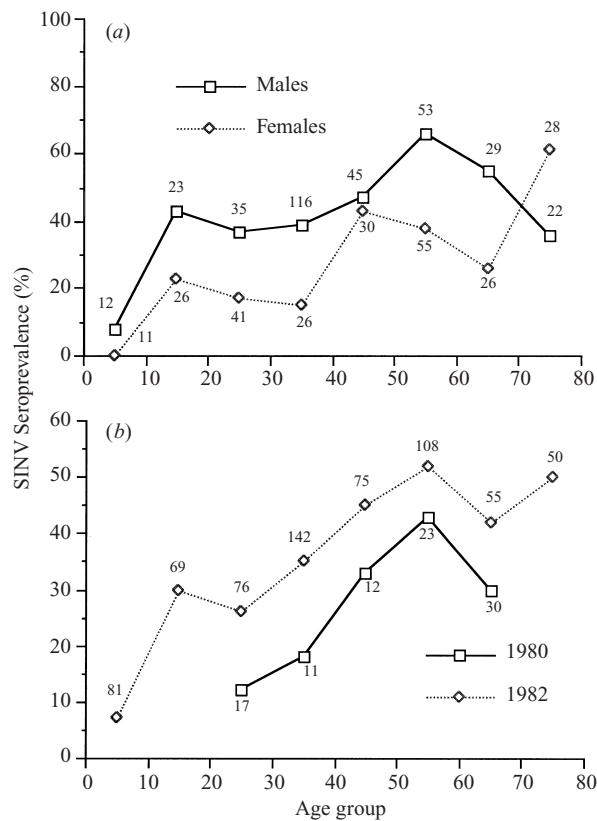
Altogether 30% (24/80) of avian and 17% (7/41) of mammalian sera, collected in 1981–3 had SINV

antibodies (Table 2). Nearly all SINV antibody positive birds belonged to the gallinaceous *Tetrao* genera. The animals had been hunted in the highly endemic Iloimantsi area.

**DISCUSSION**

Pogosta disease is a disease characterized by polyarthritits accompanied with a rash and caused by Sindbis virus. The disease is also known as ‘Ockelbo disease’





**Fig. 7.** SIN V antibody prevalences in Ilo mantsi, 1982. (a) According to gender and age group. (b) In each age group as compared to the prevalence in 1980. Number of the sera studied in each group is indicated.

in Sweden [8] and 'Karelian Fever' in Russian Karelia [10]. In addition, SIN V is distributed over vast areas of Africa, Asia, Australia, but relatively few human infections (joint manifestations with rash) have been reported there [19].

Although PD is often, especially during the epidemics, diagnosed with high degree of accuracy clinically without laboratory testing, the serological confirmation is, however, important, as some other infections may imitate it. In the early 1980s, when PD was not well known and rubella was still moderately common in Finland, there were a number of PD cases among patients with suspected rubella (e.g. in August–September 1981 6.1% were caused by SIN V but only 3.3% by rubella virus, Table 1). Some PD patients had been suspected as having varicella. Vene et al. [17] have documented clinical similarity between Ockelbo disease and parvovirus B19 infections. African patients with certain other mosquito-borne viral diseases, such as Chikungunya, O'nyong-nyong, dengue and West Nile fever, may present similar symptoms [19].

The annual number of PD cases varied extensively, from 1 to 1282 (Fig. 4). Also in non-epidemic years PD was found in different regions of Finland, not only in Eastern Finland. The northernmost PD cases were detected close to the Arctic Circle. The annual incidence of PD in Finland in 1981–96 was 2.7 (per 100000), however, the incidence was 18/100000 in Northern Karelia. In the endemic region in central Sweden it is 2.9/100000, in many other parts of Sweden only < 0.1/100000 [20]. The incidence was highest among females in the age group of 45–64 years (Fig. 3), presumably because they are the most likely to stroll in the countryside picking berries and mushrooms and whose bare limbs are then exposed to the attacks of mosquitoes. The PD incidence values include only the numbers of the patients who have had serodiagnoses. A large number of infections escape serological confirmation because many SIN V infections are moderately mild, especially in children and adolescents, and many patients do not seek medical care. Also PD is often, especially during epidemics, diagnosed clinically and no samples are submitted for confirmation.

The mean SIN V-antibody prevalence among child-bearing-aged females in Finland in 1992 was 0.6% but much higher in Central Finland and especially in Northern Karelia (Fig. 2). The prevalence among residents of Ilo mantsi parish was already 39% in 1982. During the large epidemic in 1981, the incidence of confirmed cases was 72/10000 in Ilo mantsi, meanwhile, the antibody prevalence among the residents increased by 12% (Fig. 7b). This indicates that there were 17 times more subclinical and mild (and undiagnosed) SIN V infections in spite of the considerable clinical alert and interest in diagnosing the new infection. The total number of SIN V infections in Finland in an epidemic year must be considerably over 1000 (in 1995 over 10000), all of them occurring during a period of 10 weeks. The SIN V-antibody prevalence of the Finnish population rose during 1981–95 as reflected by the prevalences in our patients with suspected rubella (with negative rubella serodiagnosis). It was 0.3% in 1973–4, 1.2% in 1980–4 and 1.8% 1985–9 (Table 1). We can roughly estimate that the mean SIN V antibody prevalence in Finnish population is today about 2%, whereas in the most endemic province Northern Karelia it is five times higher. The outcome of SIN V infection during pregnancy remains a question: although we discovered two cases of SIN V IgM-positive mothers who delivered stillborn children, no statistical significance can be

Table 2. *SINV* antibody prevalence among game animals in Ilomantsi

Species	1981	1982	1983	Total (%)
Beaver ( <i>Castor fiber</i> )			1/9	1/9
Muskrat ( <i>Ondatra zibethica</i> )			0/1	0/1
Wolf ( <i>Canis lupus</i> )			1/6	1/6
Red fox ( <i>Vulpes vulpes</i> )			0/1	0/1
Brown bear ( <i>Ursus arctos</i> )	2/2	1/2	0/3	3/7
American mink ( <i>Mustela vison</i> )	0/1			0/1
Lynx ( <i>Felix lynx</i> )			0/2	0/2
Snow hare ( <i>Lepus timidus</i> )	0/2		2/4	2/6
Moose ( <i>Alces alces</i> )		0/4	0/4	0/8
Mammals (total)				7/41 (17)
Widgeon ( <i>Anas penelope</i> )			0/2	0/2
Teal ( <i>A. crecca</i> )		1/6	0/2	1/8
Mallard ( <i>A. platyrhynchos</i> )			0/19	0/19
Long-tailed duck ( <i>Clangula hyemalis</i> )			0/2	0/2
Goldeneye ( <i>Bucephala clangula</i> )		1/1	0/3	1/4
Willow grouse ( <i>Lagopus lagopus</i> )	0/1			0/1
Black grouse ( <i>Tetrao tetrix</i> )	10/15	1/6	0/3	11/24
Capercaillie ( <i>T. urogallus</i> )	7/11		4/7	11/18
Wood pigeon ( <i>Columba palumbus</i> )		0/2		0/2
Birds (total)				24/80 (30)

attributed to these findings; however, other alphaviruses have been reported to cause complications in pregnancy in humans [21, 22] and in animals [23–25].

Norder et al. [12] found that nucleotide sequences of *SINV* strains from Sweden and the South Africa cluster together supporting the theory of dissemination of *SINV* by migrating birds. In Northern Europe *SINV* has found a receptive ecosystem. In the early spring the arrival of migratory birds coincides with the ending of hibernation of the non-aedine mosquitoes which fly around seeking blood. According to Reeves et al. [26] passeriform birds occasionally undergo chronic WEE viral infections; the migration may reactivate the latent chronic infection.

*SINV* and WEEV are closely related belonging to the same WEE complex of alphaviruses [27–29]. There seems to be numerous ecological and epidemiological similarities between *SINV* and WEEV. Both seem to be sensitive to high temperatures. According to McIntosh and Gear [30] *SINV* infections in South Africa are more frequent in the temperate inland plateau than in the subtropical lowlands and Kramer et al. [31] have found that *Culex tarsalis* is a less competent vector of WEE virus at 32 °C than at 18 °C or 25 °C. Hess et al. [32] have noted that most WEE outbreaks occur in United States at or above the 21 °C June isotherm; these results have been con-

firmed by Hardy et al. [33]. In Finland the high temperature is not the limiting factor for *SINV*, rather the opposite: the beautiful late summer days tempt people to go out and into contact with mosquitoes (Fig. 6c).

The depth of snow cover in the late winter seemed to predict the number of PD cases (Fig. 5a). *Culex* and *Culiseta* species spend the first part of the summer as larvae in temporary pools of water [34], which dry too early if the preceding winter has had a low snowfall. In Fennoscandia (excluding the North of Lapland) *SINV* infections seem to be most common in the regions with the highest winter snow depth: Northern Karelia [18] and Sweden between the 60th and 63rd latitudes. In South Africa unusually heavy rainfall early in the summer predicts the *SINV* epidemic [35, 36].

In addition to being isolated from non-aedine mosquitoes, *SINV* has also been isolated from *Aedes* [11, 37] and from a frog [38]. WEEV was discovered initially in *Culex* and passerine birds. Nesting birds are the principal amplifying hosts. If suitable ecological conditions persist, virus may spill over to infect a wide variety of vertebrates including other groups of birds, large and small feral and domestic mammals by mammalophilic *Culiseta* and *Aedes* species, and occasionally reptiles and amphibians and man [39].

In Finland 30% of game birds had *SINV* antibodies in 1981–3, during the large epidemic of



1981 65% of *Tetrao* species (black grouse and capercaillies) were seropositive (Table 2), although the numbers studied in different species were too small to draw firm conclusions. Lundström et al. [40] studied experimental viremia in three orders of birds: *Anseriformes*, *Galliformes* and *Passeriformes*; the highest titre ( $10^{8.2}$  p.f.u./ml) was in young (< 1 week) capercaillie (*Tetrao urogallus*). In our material 2 out of 6 snow hares (*Lepus timidus*) had SINV antibodies. WEEV seropositivity rates in wild mammals are generally low, but the jackrabbit (*Lepus californicus*) is one of the most frequently involved animals [39].

Is SINV disease new in Europe? In the early 1960s, no signs of SINV activity were seen. In the studies of Saikku [41] on 5000 human sera and 1000 sera of passerine and gallinaceous birds, moose, hare and cattle, collected in Finland 1958–64, and of Kunz et al. [42] on 232 human sera collected in Austria before 1963, not a single SINV reactor was found. In 1963 the first reported SINV epidemic occurred in South Africa [43] and seropositive children were found also in Israel [44]. In 1965 4% of studied birds in the Volga Delta were seropositive [45] and the first SINV reactors in Europe were detected in Finland [1] and Northern Italy [46]. The second SINV epidemic in South Africa was in 1967 and in the same year the first clinical cases were detected in Sweden. In the following years signs of virus activity were found in different parts of the Middle East and Europe [47–58]. In 1974 there was an exceptionally large epidemic of thousands of human cases in South Africa [36] and the first noted PD epidemic occurred in Finland [7]. In 1979, the fourth epidemic in South Africa [59] was followed by the detection of first serologically confirmed SINV infections in 1980 and a larger outbreak in 1981 in Finland [3–6].

Some questions still remain to be answered. First, why were there no cases of PD in Fennoscandia in the spring. Although the hibernated mosquitoes sometimes also attack humans, SINV-carrying species might be non-antropophilic in the spring. According to Schlesinger [60] temperature-sensitive mutants of SINV may arise during winter and Reeves et al. [61] reported that WEE-virus strains in hibernated mosquitoes were non-pathogenic for mice and poorly immunogenic for chicken. Secondly, what is the cause of the mysterious tendency of PD to occur in Finland in large outbreaks every seventh year (at least until now): 1974, 1981, 1988 and 1995 (and in Sweden in 1967). According to Davies [62] the opinion of the Masai is that Nairobi sheep disease occurred in

epizootics ‘every 7 years’, when the periodic heavy and prolonged rainfall exists. According to Lindén [63] in Finland the cycle lengths of tetraonid birds are 6–7 years, there was a crash of their population in N. Karelia in 1974 and again 1981, in the epidemic years of PD. Galliforms seem to be involved in virus amplification in Finland. Could the herd immunity among birds (in Northern Europe and/or in Africa) cause the 7-year interval of SINV epidemics in Fennoscandia?

The myriads of blood-hungry mosquitoes in Northern Eurasia and Northern America are potentially susceptible populations in which a newly introduced virus could flourish. Inkoo virus, the Finnish representative of Californian encephalitis group, is one of the most abundant arboviruses, especially in Lapland [16, 64]. Vehicles for viruses, migratory birds and mosquitoes spread by air currents already exist, and especially if aided by critical changes in ecological circumstances, e.g. global warming [65] occur, a very large mosquito-borne outbreak may emerge in the North. The outbreaks of West Nile fever in Europe [66] and in USA [67] may serve as an example for emergence of a trans-continental zoonotic mosquito-borne virus in new locations.

## REFERENCES

1. Saikku P. Occurrence of group [A] hemagglutination-inhibiting activity in a Finnish serum material. In: Bardos V, and coworkers, eds. Proceedings of the Symposium held in Smolenice near Bratislava 1966. Bratislava: Publishing House of the Slovak Academy of Sciences, 1969: 375–8.
2. Brummer-Korvenkontio M, Saikku P. Mosquito-borne viruses in Finland. *Med Biol* 1975; **53**: 279–81.
3. Brummer-Korvenkontio M. Hyttysleivinneiset virukset Suomessa ja niiden aiheuttamat taudit [Mosquito-borne viruses and diseases in Finland]. *Symp Med Entomol*, 6–7 March 1981.
4. Brummer-Korvenkontio M, Kuusisto P. Onko Suomen länsiosa säästynyt ‘Pogostalta’ [Has western Finland been spared of the ‘Pogosta’]. *Suomen Lääkärilehti* 1981; **36**: 2606–7.
5. Brummer-Korvenkontio M. Pogosta tauti [Pogosta disease]. *Duodecim* 1982; **98**: 926–9.
6. Oker-Blom N, Brummer-Korvenkontio M. Emerging virus diseases. In: *Giornate internazionali di biologia: le vie della sopravvivenza*, Napoli, 5–7 March 1982. Roma: Ragno Editore, 1982.
7. Tuomilehto J, Kuusisto P, Savola M. A memorandum for the Finnish Medical Board, 1974.
8. Skogh M, Espmark Å. Ockelbo disease: epidemic arthritis-exanthema syndrome in Sweden caused by Sindbis-virus like agent. *Lancet* 1982; **i**: 795–6.

9. Niklasson B, Espmark Å, LeDuc JW, et al. Association of a Sindbis-like virus with Ockelbo disease in Sweden. *Am J Trop Med Hyg* 1984; **33**: 1212–7.
10. Lvov DK, Skvortsova TM, Kondashina NG, et al. Etiology of Karelian fever, a new arbovirus infection. *Voprosy Virus* 1982; **27**: 690–2.
11. Lvov DK, Skvortsova TM, Berezina LK, et al. Isolation of Karelian fever agent from *Aedes communis* mosquitoes. *Lancet* 1984; **ii**: 399–400.
12. Norder H, Lundström JO, Kozuch O, Magnius LO. Genetic relatedness of Sindbis virus strains from Europe, Middle East, and Africa. *Virology* 1996; **222**: 440–5.
13. Lundström JO. Mosquito-borne viruses in Western Europe: a review. *J Vector Ecol* 1999; **24**: 1–39.
14. Turunen M, Kuusisto P, Uggeldahl P-E, Toivanen A. Pogosta disease: clinical observations during an outbreak in the province of North Karelia, Finland. *Brit J Rheumatol* 1998; **37**: 1177–80.
15. Autio P, Niemi KM, Kariniemi A-L. An eruption associated with alphavirus infection. *Br J Dermatol* 1996; **135**: 320–3.
16. Brummer-Korvenkontio M. Arboviruses in Finland. V. Serological survey of antibodies against Inkoo virus (California group) in human, cow, reindeer, and wildlife sera. *Am J Trop Med Hyg* 1973; **22**: 654–61.
17. Vene S, Franzén C, Niklasson B. Development of specific antibody patterns and clinical symptoms following Ockelbo virus infection. *Arch Virol* 1994; **134**: 61–71.
18. Meteorological Yearbook[s] of Finland 1981–1996. Helsinki: Finnish Meteorological Institute, 1985–1997.
19. Johnston RE, Peters CJ. Alphaviruses. In: Fields BN, Knipe DM, Howley PM, eds. *Fields Virology* 1, 3rd ed. Philadelphia: Lippincott-Raven, 1996: 843–98.
20. Lundström JO, Vene S, Espmark Å, Engvall M, Niklasson B. Geographical and temporal distribution of Ockelbo disease in Sweden. *Epidemiol Infect* 1991; **106**: 567–74.
21. Shinefield HR, Townsend TE. Transplacental transmission of Western equine encephalomyelitis. *J Pediatr* 1953; **43**: 21–5.
22. Copps SC, Giddings LE. Transplacental transmission of Western equine encephalitis. *Pediatrics* 1959; **24**: 31–3.
23. Moreland AF, Schimpff RD, Gaskin JM. Fetal mortality and malformations associated with experimental infections of Western Equine Encephalomyelitis vaccine virus in rhesus monkeys (*Macaca mulatta*). *Teratology* 1979; **20**: 65–74.
24. Leonova ES, Karmysheva VYa, Ovsyannikova NV. Features of experimental alphavirus infection during pregnancy and early stages of ontogenesis in mice (in Russian, English summary). *Voprosy Virus* 1983; **28**: 53–9.
25. Milner AR, Marshall ID. Pathogenesis of in utero infections with abortogenic and non-abortogenic alphaviruses in mice. *J Virol* 1984; **50**: 66–72.
26. Reeves WC, Hutson GA, Bellamy RE, Scrivani RP. Chronic latent infection of birds with Western equine encephalitis virus. *Proc Soc Exp Biol Med* 1958; **97**: 733–6.
27. Hahn CS, Lustig S, Strauss EG, Strauss JH. Western equine encephalitis virus is a recombinant virus. *Proc Natl Acad Sci USA* 1988; **85**: 5997–6001.
28. Strauss JH. Recombination in the evolution of RNA viruses. In: Morse SS, ed. *Emerging viruses*. New York: Oxford University Press, 1993: 241–51.
29. Weaver SC, Kang W, Shirako Y, Rüménapf T, Strauss EG, Strauss JH. Recombinational history and molecular evolution of Western equine encephalomyelitis complex alphaviruses. *J Virol* 1997; **71**: 613–23.
30. McIntosh BM, Gear JH. Sindbis virus. In: Steele JH, ed. *CRC Handbook Series in Zoonoses, Section B: Viral Zoonoses*, vol. 1 (Beran GW, ed.). Boca Raton, FL: CRC Press, 1981: 221–3.
31. Kramer LD, Hardy JL, Presser SB. Effect of temperature of extrinsic incubation on the vector competence of *Culex tarsalis* for Western equine encephalomyelitis virus. *Am J Trop Med Hyg* 1983; **32**: 1130–9.
32. Hess AD, Cherubin CE, LaMotte LC. Relation of temperature to activity of Western and St. Louis encephalitis viruses. *Am J Trop Med Hyg* 1963; **12**: 657–67.
33. Hardy JL, Meyer RP, Presser SB, Milby MM. Temporal variations in the susceptibility of a semi-isolated population of *Culex tarsalis* to peroral infection with Western equine encephalomyelitis and St. Louis encephalitis viruses. *Am J Trop Med Hyg* 1990; **42**: 500–11.
34. Brummer-Korvenkontio M, Korhonen P, Hämeen-Anttila R. Ecology and phenology of mosquitoes (*Dipt. Culicidae*) inhabiting small pools in Finland. *Acta Entomologica Fennica* 1971; **28**: 51–73.
35. Jupp PG, Blackburn NK, Thompson DL, Meenehan GM. Sindbis and West Nile virus infections in the Witwatersrand–Pretoria region. *South Afr Med J* 1986; **70**: 218–20.
36. McIntosh BM, Jupp PG, dos Santos I, Meenehan GM. Epidemics of West Nile and Sindbis viruses in South Africa with *Culex (Culex) univittatus* Theobald as vector. *S Afr J Sci* 1976; **72**: 295–300.
37. Francy DB, Jaenson TGT, Lundström JO, et al. Ecologic studies on mosquitoes and birds as hosts of Ockelbo virus in Sweden and isolation of Inkoo and Batai viruses from mosquitoes. *Am J Trop Med Hyg* 1989; **41**: 355–63.
38. Kozuch O, Labuda M, Nosek J. Isolation of Sindbis virus from the frog *Rana ridibunda*. *Acta Virol* 1978; **22**: 78.
39. Reisen WK, Monath TP. Western equine encephalomyelitis. In: Monath TP, ed. *The arboviruses*, vol. 5. Boca Raton, Florida: CRC Press, 1989: 89–137.
40. Lundström JO, Turell MJ, Niklasson B. Antibodies to Ockelbo virus in three orders of birds (*Anseriformes*, *Galliformes* and *Passariformes*) in Sweden. *J Wildlife Dis* 1992; **28**: 144–7.

41. Saikku P. Alphaviruses in Europe. In: Lvov DK, ed. Etiology, epidemiology diagnoses and prophylaxis of Karelian Fever-Pogosta disease. Petrozavodsk: Academy of Medical Sciences, USSR, 1984: 26–7.
42. Kunz C. Nachweis hämagglutinations-hemmender Antikörper gegen Arbo-Viren in der Bevölkerung Österreichs. Zentralbl Bakt Parasit Infekt I Abt Orig 1963; **190**: 174–82.
43. McIntosh BM, McGillivray GM, Dickinson DB. Illness caused by Sindbis and West Nile viruses in South Africa. South Afr Med J 1964; **38**: 291–4.
44. Ben-Porath E, Fattal B, Goldblum N, Yofr J. Occurrence of antibodies to Sindbis virus in children from a West Nile endemic area. Israel J Med Sci 1965; **1**: 88–90.
45. Berezin VV, Chumakov MP, Karaseva PS, Semenov BF. On the problem of investigation of the role of migratory birds in arbovirus circulation [in Russian, English summary]. Voprosy Virus 1967; **12**: 336–41.
46. Balducci M, Verani P, Lopes MC, Gregoric B. Survey for antibodies against arthropod-borne viruses in man and animals in Italy. II. Serologic status of human beings in a Northern Italian Region (Gorizia province). Am J Trop Med Hyg 1967; **16**: 211–5.
47. Nir Y, Avivi A, Lasovski Y, Margalit J, Goldwasser R. Arbovirus activity in Israel. Israel J Med Sci 1972; **8**: 1695–701.
48. Aleshin LP, Gaidamovich Ya, Nikiforov LP, Chervonsky VI, Gromashevsky VL. Participation of aquatic birds of Southeastern Azerbaijan in West Nile virus circulation. Voprosy Virus 1971; **16**: 211–5.
49. Sixl W, Batiková M, Stünzner D, Sekeyová M, Sixl-Voigt B, Gresiková M. Haemagglutination-inhibiting antibodies against arboviruses in animal sera, collected in some regions in Austria II. Zentralbl Bakt Hyg I Abt Orig A 1973; **224**: 303–8.
50. Albanese M, DiCuonzo G, Randazzo G, Srihongse S, Tringali G. Survey for arbovirus antibodies in domestic animals of western Sicily. Ann Sclavo 1971; **13**: 641–7.
51. Ernek E, Kozuch O, Sekeyová M, Hudec K, Folk C. Antibodies to arboviruses in birds in Czechoslovakia. Acta Virol 1971; **15**: 335.
52. Melnikova EE, Nikolov ZV, Donchev StI. [Investigation of sera of aquatic birds and those associated with water shot in southwestern region of People's Republic of Bulgaria.] Sborn Trud Ekol Virus 1973; **1**: 152–5.
53. Aspöck H, Kunz C, Picher O, Böck F. Virologische und serologische Untersuchungen über die Rolle von Vögeln als Wirte von Arboviren in Ost-Österreich. Zentralbl Bakt Hyg I Abt Orig A 1973; **224**: 156–67.
54. Ernek E, Kozuch O, Nosek J, Labuda M. Evidence of circulation of Sindbis virus and other arboviruses by using sentinental animals in Western Slovakia. Intervirology 1973/74; **2**: 186–92.
55. Ernek E, Kozuch O, Nosek J, Hudec K, Folk C. Virus neutralizing antibodies to arboviruses in birds of the order *Anseriformes* in Czechoslovakia. Acta Virol 1975; **19**: 349–53.
56. Ernek E, Kozuch O, Gresiková M, Nosek J, Sekeyová M. Isolation of Sindbis virus from the reed warbler (*Acrocephalus cirpaceus*) in Slovakia. Acta Virol 1973; **17**: 359–61.
57. Ernek E, Kozuch O, Nosek J, Teplan J, Folk C. Arboviruses in birds captured in Slovakia. J Hyg Epid Microbiol Immunol 1977; **21**: 353–9.
58. Papapanagiotou J, Kyriazopoulou V, Antoniadis A, Batiková M, Gresiková M, Sekeyová M. Haemagglutination-inhibiting antibodies to arboviruses in a human population in Greece. Zentralbl Bakt Hyg I Abt Orig A 1974; **228**: 443–6.
59. Monath TP. Impact of arthropod-borne virus diseases on Africa and the Middle East. In: Kurstak E, ed. Applied virology. Orlando: Academic Press, 1984: 377–400.
60. Schlesinger RW. Sindbis virus replication in vertebrate and mosquito cells: an interpretation. Med Biol 1975; **53**: 295–301.
61. Reeves WC, Bellamy RE, Scrivani RP. Relationships of mosquito vectors to winter survival of encephalitis vectors. I. Under natural conditions. Am J Hyg 1958; **67**: 78–89.
62. Davies FG. Nairobi sheep disease. In: Monath TP, ed. The arboviruses, vol. 3. Boca Raton, Florida: CRC Press, 1988: 197.
63. Lindén H. Characteristics of tetraonid cycles in Finland. Finnish Game Res 1989; **46**: 34–42.
64. Brummer-Korvenkontio M. Bunyamwera arbovirus supergroup in Finland: a study on Inkoo and Batai viruses. Commentationes Biologicae (Helsinki) 1974; **76**: 1–52.
65. Reeves WC, Hardy JL, Reisen WK, Milby MM. Potential effect of global warming on mosquito-borne arboviruses. J Med Entomol 1994; **31**: 323–32.
66. Hubálek Z, Halouzka J. West Nile Fever, a reemerging mosquito-borne viral disease in Europe. Emerg Infect Dis 1999; **5**: 643–50.
67. Rappole JH, Derrickson SR, Hubalek Z. Migratory birds and spread of West Nile virus in the Western Hemisphere. Emerg Infect Dis 2000; **6**: 319–28.