

JOURNAL OF MENTAL SCIENCE.

Asylum Reports have been received for 1907-8 from those marked with an asterisk:—COUNTY.—Beds, Berks, Bucks, Cambridge, Carmarthen,* Chester, Chester (Parkside), Cornwall, Cumberland,* Denbigh, Derby (Mickleover),* Devon, Dorset,* Durham, Essex, Glamorgan,* Gloucester, Hants, Isle of Wight, Hereford,* Hertford,* Kent (Barming), (Chartham), Lancashire (Lancaster), (Rainhill), (Prestwich),* (Whittingham), Leicester,* Lincoln (Kesteven),* (Bracebridge), London (Colney Hatch), (Hanwell), (Banstead), (Canehill), (Claybury), (Bexley), (Stone, Dartford),* Middlesex, Monmouth,* Norfolk, Northampton, Northumberland, Nottingham, Oxford, Salop,* Somerset (Wells),* (Taunton), Stafford (Stafford), (Lichfield), (Leek), Suffolk,* Surrey,* Sussex (East),* (Chichester), Warwick, Wilts,* Worcester,* Yorkshire (Wakefield),* (Wadsley), (Menston), (Clifton), (Beverley); BOROUGH.—Birmingham (Winson Green), (Rubery Hill), Bristol, Derby,* Exeter, Hull, Hayward's Heath,* Ipswich,* Leicester, London,* Middlesbrough, Newcastle, Norwich, Nottingham,* Plymouth, Portsmouth, Sunderland. HOSPITALS.—Manchester, Wonford,* Barnwood,* Albert, Lincoln,* St. Luke's, St. Andrew's, St. Ann's, Coppice, Warneford,* Coton Hill, Bethlem,* Earlswood,* Bootham, Retreat,* Colchester, Broadmoor, Isle of Man; Metropolitan Asylums Board (Belmont),* (Caterham),* (Darenth),* (Leavesden),* (Tooting Bec),* (Rochester House),* Aberdeen,* Argyll,* Ayr, Dumfries,* Edinburgh,* Midlothian, Fife, Dundee, Montrose, Inverness,* Lanark,* Barony, Glasgow, Royal,* Lenzie, Govan,* Gartloch,* Kirklands, Perth,* Murthly, Roxburgh,* Stirling,* Baldovan, Armagh,* Ballinasloe, Belfast, Carlow, Castlebar, Clonmel, Cork, Downpatrick,* Ennis,* Enniscorthy, Farnham, Kilkenny, Killarney, Letterkenny, Limerick,* Londonderry, Maryborough, Monaghan, Mullingar, Omagh, Palmerston, Richmond, St. Patrick's, Sligo, Waterford.

The following Asylum Reports have also come to hand:—Egypt, Cape of Good Hope, Nova Scotia, New Brunswick, Victoria, New York, Massachusetts Hospital, Ontario, Verdun, Warren, Pennsylvania,* Philadelphia Friends, Binghampton, Willard, Northampton, Long View, South Australia,* Cleveland, Matteawan,* New South Wales,* Agra and Oudh,* Assam,* Madras, Bengal,* Bombay,* Central Provinces, Rangoon,* Punjab, North-Western Provinces, Tezpur, Mississippi, Pennsylvania Hospital, Washington, Utica, Long Island, Virginia Central, Illinois West, New Hampshire, Butler,* Maryland, Pennsylvania West, South Mountain, Manhattan, Indiana East, Connecticut, Carolina N., Dakota N., Ohio, Carthage, Buffalo, Michigan East, Missouri, Alt Scherbitz, Massachusetts Board, Virginia West, Pennsylvania, Danville, Sheppard and Pratt Hospital, Baltimore, Pennsylvania, Harrisburgs, Pennsylvania, Norristown, Aarhus, Lebanon,* Hudson River, Rochester, Taunton, Iowa, Jamaica,* Grahamstown, Pretoria, Egypt, Albany, Tarrytown, Straits Settlements, Lower Austria.

Authors of Original Papers receive 25 reprints of their articles free of cost if application be made on the slips when returning proof. If any *extra* reprints are required, notice should be at the same time sent to the Printers, Messrs. ADLARD and SON, Bartholomew Close, London, E.C., who will supply them at a fixed charge. Unless instructions are sent by authors of Papers when the proofs are returned, no copies can be guaranteed.

The copies of the *Journal of Mental Science* are regularly sent by carrier, who in every case obtains a receipt of delivery, to the Ordinary and Honorary Members of the Association. Complaints of non-receipt of the JOURNAL should be sent to Messrs. ADLARD. Any change of address should be intimated to the General Secretary.

ADLARD & SON

FOUNDED 1766.

LONDON:

BARTHOLOMEW CLOSE, E.C.

Printing Works. Publishing and Advertisement Offices. Counting-house.

TELEPHONE: HOLBORN 927.

Works Manager: Mr. R. RIDLEY.

COUNTRY:

BARTHOLOMEW PRESS, DORKING.

One hour from London by the London and Brighton or South Eastern Railways.

Printing Works occupy over half an acre. Contain all modern improvements. Extensive, new and exceptionally fine plant.

TELEPHONE: DORKING 196.

Works Manager: Mr. E. HOBLEY.

**HOSPITAL AND ASYLUM
CONTRACTS,**

SCIENTIFIC LITERATURE,

**FINEST ILLUSTRATIONS
IN COLOURS OR IN
BLACK AND WHITE,**

**WEEKLY, MONTHLY AND
QUARTERLY JOURNALS.**

MALE NURSES' (TEMPERANCE) CO-OPERATION LIMITED.

Only Addresses - { London: 10, THAYER STREET, MANCHESTER SQUARE, W.
Manchester: 235, BRUNSWICK ST. (Facing Owens College).
Edinburgh: 7, TORPICHEN STREET.

Superior Trained MALE NURSES for Medical, Surgical, Mental, Dipsomania, Fever, and Travelling Cases supplied at a moment's notice, Day or Night. All Nurses supplied by this Association are TOTAL ABSTAINERS. SKILLED MASSEURS supplied. Terms: £1 11s. 6d. to £2 2s. or upwards per week. Nurses to receive their own fees.

F. ROUSE WALSH, Secretary.

Telephones { (London), 538, Paddington.
(Manchester), 4899, Central.
(Edinburgh), 2715, Central.

Telegrams { "Assuaged, London."
"Assuaged, Manchester."
"Assuaged, Edinburgh."

TEMPERANCE MALE NURSES' CO-OPERATION

London: 43, New Cavendish St., W.
Manchester: 176, Oxford Road.
Glasgow: 28, Windsor Terrace.

Superior trained Male Nurses for Medical, Surgical, Mental, Dipsomania, Travelling, and all cases. Nurses reside on the premises, and are always ready for urgent calls, Day or Night. Skilled Masseurs and good Valet Attendants supplied. Terms from £1 11s. 6d. The Nurses are fully insured against accident.

TELEPHONE NOS.
London: 1472 Paddington.
Manchester: 5213 Central.
Glasgow { 949 Charing X (Nat.)
477 Central (P. O.)

TELEGRAMS:
"Tactear, London."
"Tactear, Manchester."
"Surgical, Glasgow."
M. D. GOLD, Sec.

RONUK
(SANITARY)
Floor Polish

By Royal Warrant
to H.M. The King.

**PREVENTS
THE HARBOURING
OF GERMS.**

USED IN THE
**PRINCIPAL
HOSPITALS**

Booklet with full particulars on application to
'RONUK,' Ltd., PORTSLADE,
near BRIGHTON,
SANITARY POLISH MANUFACTURERS,
and Contractors for the first preparation and
polishing of all kinds of flooring.
DEPTS:—LONDON AND MANCHESTER.

Crown 8vo. Cloth. Price 5s. net.

EX CATHEDRÂ
ESSAYS ON INSANITY.

BY

T. CLAYE SHAW, M.D., F.R.C.P.

LONDON:

ADLARD & SON, Bartholomew Close, E.C.

ALWAYS USE

REFLEX

FLOOR POLISH.

REQUIRES NO MIXING WHATEVER.

Brilliantly Polishes Floors, Linoleums, Floorcloths, &c.

Economical, Cleanly, Healthful; Maximum of Lustre for Minimum of Labour

GEO. T. COX & SONS, Ltd.,

9 & 10, ST. MARY-AT-HILL, EASTCHEAP, LONDON, E.C.

This Polish is specially adapted for use in Public Institutions and other large establishments. Samples Free on application.

**H.R.H. PRINCESS CHRISTIAN'S
TRAINED NURSES.**

Fully (Three years) Hospital Trained Nurses for Medical, Surgical,
Infectious, Mental, Maternity, and Massage Cases

Can be supplied on the Shortest Notice.

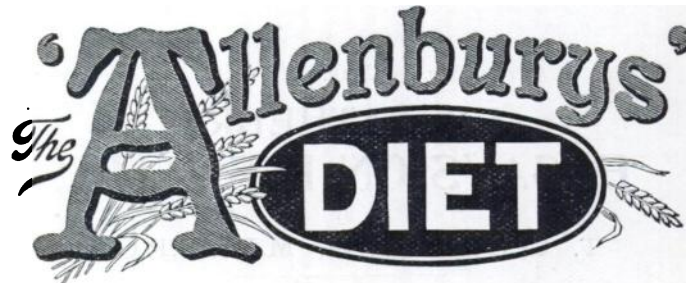
APPLY BY TELEGRAM OR OTHERWISE TO

The Superintendent, 1, CLARENCE VILLAS, WINDSOR.

Telephone—
0157, WINDSOR.

Telegraphic Address—
"NURSES, WINDSOR."

*A Pancreatised Food that can be made in a minute, the
addition of boiling water only being necessary.*



A PANCREATISED MILK AND CEREAL FOOD.

By the use of the "Allenburys" Diet all trouble of peptonising milk and farinaceous foods is overcome. In the sick room it will be found extremely useful as the food is easily digested and assimilated, is quickly made, and only the exact quantity required need be prepared at a time.

The "Allenburys" Diet is made from pure rich milk and whole wheat, both ingredients being largely pre-digested during manufacture. It can be taken by those who cannot digest cow's milk, and provides a light and very nourishing diet for Invalids, Dyspeptics and the Aged.

For travellers by sea or land this complete food will be found exceedingly valuable.

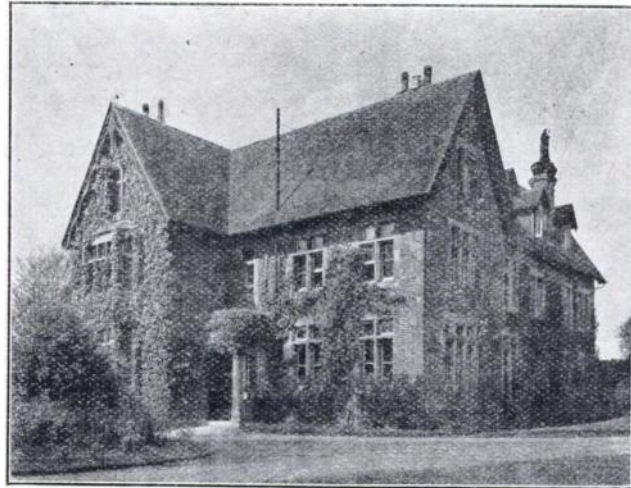
~~~~~  
**A Sample with full particulars sent free on request.**  
~~~~~

ALLEN & HANBURYS Ltd.,

Plough Court, Lombard Street, London, E.C.

SOUTH BEACON,

HADLOW DOWN, BUXTED, SUSSEX.



Established 1893, for the reception of Gentlemen suffering from nervous ailments, but not sufficiently ill for Asylum treatment.

40 acres, comprising Golf Ground.

Motoring, Cricket, Lawn Tennis, Croquet, Bowls, etc.

Terms from Three Guineas per week.

Mr. PHILIP H. HARMER,

South Beacon, Hadlow Down,

Buxted, Sussex.

STATIONS :

LONDON, BRIGHTON AND SOUTH COAST RAIL- WAY.	{	BUXTED (3 miles). MAYFIELD (4 miles). HEATHFIELD (4 miles).
---	---	---

Telegrams : HADLOW DOWN (half mile).