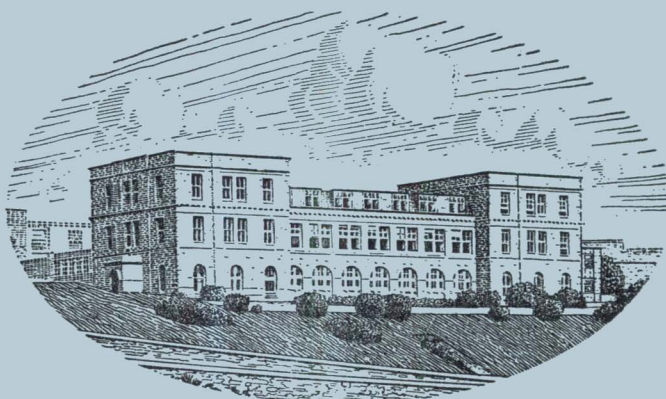


JOURNAL OF THE
MARINE BIOLOGICAL ASSOCIATION
OF THE UNITED KINGDOM



THE PLYMOUTH LABORATORY

VOLUME 52, No. 4

(issued November 1972)

CAMBRIDGE
AT THE UNIVERSITY PRESS

1972

Price £6.00 net

(U.S.A. \$19.00)

Annual Subscription for Volume (of four parts): £22.00 net (U.S.A. \$70.00)

THE MARINE BIOLOGICAL ASSOCIATION OF THE UNITED KINGDOM

PATRON

H.R.H. THE PRINCE PHILIP DUKE OF EDINBURGH, F.R.S.

OFFICERS AND COUNCIL

President: Sir ALAN L. HODGKIN, K.B.E., Sc.D., P.R.S.

Vice-Presidents

Prof. A. V. HILL, C.H., O.B.E., Sc.D., LL.D.,
F.R.S.
Sir EDWARD J. SALISBURY, Kt., C.B.E., D.Sc.,
LL.D., F.R.S.
Prof. Sir JAMES GRAY, Kt., C.B.E., M.C., Sc.D.,
LL.D., F.R.S.

Prof. Sir ALISTER C. HARDY, Kt., D.Sc., F.R.S.
Sir C. MAURICE YONGE, Kt., C.B.E., D.Sc., F.R.S.
Rear Admiral Sir EDMUND G. IRVING, K.B.E., C.B.
Sir FREDERICK S. RUSSELL, Kt., C.B.E., D.S.C.,
D.F.C., D.Sc., LL.D., F.R.S.
Sir EDWARD R. CHADWYCK-HEALEY, Bt., M.C.

Honorary Members

Prof. Sir JAMES GRAY, Kt., C.B.E., M.C., Sc.D.,
LL.D., F.R.S.
Prof. Sir ALISTER C. HARDY, Kt., D.Sc., F.R.S.
E. H. E. HAVELOCK, C.B., C.B.E.

Prof. A. V. HILL, C.H., O.B.E., Sc.D., LL.D., F.R.S.
Dr A. G. HUNTSMAN
Dr A. C. REDFIELD
Sir C. MAURICE YONGE, Kt., C.B.E., D.Sc., F.R.S.

COUNCIL

Elected Members

P. F. BAKER, Ph.D.
Prof. R. B. CLARK, D.Sc.
R. I. CURRIE
Sir GEORGE DEACON, Kt., C.B.E., D.Sc., F.R.S.
Prof. J. M. DODD, Ph.D.
M. R. DROOP, D.Sc.
Rear Admiral Sir EDMUND G. IRVING, K.B.E., C.B.
R. D. KEYNES, Sc.D., F.R.S.

A. J. LEE, D.S.C.
Prof. O. E. LOWENSTEIN, D.Sc., F.R.S.
C. E. LUCAS, C.M.G., D.Sc., F.R.S.
Prof. N. B. MARSHALL, Sc.D., F.R.S.
Prof. D. NICHOLS, D.Phil.
F. E. ROUND, D.Sc.
Prof. J. Z. YOUNG, D.Sc., F.R.S.

Governors

J. GRAHAM (Ministry of Agriculture, Fisheries
and Food)
The Worshipful Company of Fishmongers:
Sir EDWARD R. CHADWYCK-HEALEY, Bt., M.C.
Col. Sir JOHN G. CAREW POLE, Bt., D.S.O., T.D.
The Hon. HUGH WALDORF ASTOR, J.P.
Prof. J. W. S. PRINGLE, M.B.E., Sc.D., F.R.S.
(Oxford University)

M. J. WELLS, Sc.D. (Cambridge University)
EDWARD HINDLE, Sc.D., F.R.S. (British
Association)
Prof. G. P. WELLS, Sc.D., F.R.S. (Zoological Society)
Prof. SIR BERNARD KATZ, Kt., M.D., D.Sc., F.R.S.
(Royal Society)
Prof. E. J. DENTON, Sc.D., F.R.S. (Physiological
Society)

Hon. Treasurer: The Hon. HUGH WALDORF ASTOR, J. P., 14 Culross Street, London, W1Y 3HN
Secretary: J. E. SMITH, C.B.E., Sc.D., F.R.S., The Laboratory, Citadel Hill, Plymouth, PL1 2PB

SCIENTIFIC STAFF

Director: J. E. SMITH, C.B.E., Sc.D., D.Sc., F.I.Biol., F.R.S.

MARY W. PARKE, D.Sc., Ph.D., F.L.S., F.I.Biol.,
F.R.S. (*Phycologist*)
P. G. CORBIN, B.A. (*Zoologist*)
N. A. HOLME, M.A. (*Zoologist*)
G. R. FORSTER, B.Sc. (*Zoologist*)
E. D. S. CORNER, M.Sc., Ph.D. (*Biochemist*)
A. J. SOUTHWARD, D.Sc., Ph.D. (*Zoologist*)
J. V. HOWARTH, B.Sc. (*Physiologist*)
Q. BONE, M.A., D.Phil. (*Zoologist*)
G. T. BOALCH, B.Sc., Ph.D. (*Phycologist*)
G. W. BRYAN, B.Sc., Ph.D. (*Zoologist*)

A. G. DAVIES, B.Sc., Ph.D. (*Physical Chemist*)
P. R. DANDO, B.Sc., Ph.D. (*Biochemist*)
P. E. GIBBS, B.Sc., M.A., Ph.D. (*Zoologist*)
B. L. ROBERTS, M.A., Ph.D. (*Physiologist*)
J. C. GREEN, B.Sc., Ph.D. (*Phycologist*)
D. K. GRIFFITHS, M.Sc. (*Physical Oceanographer*)
G. W. POTTS, B.Sc., Ph.D. (*Zoologist*)
J. B. GILPIN-BROWN, B.Sc., Ph.D. (*Zoologist*)
H. MEVES, M.D. (*Physiologist*)
M. WHITFIELD, B.Sc., Ph.D. (*Physical Chemist*)
M. R. CLARKE, B.Sc., Ph.D. (*Zoologist*)

J. H. WICKSTEAD, D.Sc., Ph.D., F.I.Biol., Foreign and Commonwealth Office (O.D.A.) (*Zoologist*)
Prof. E. J. DENTON, Sc.D., F.I.Biol., F.R.S. (*Physiologist*),
Royal Society Research Professor of Bristol University
MOLLY F. SPOONER, Ph.D. (*Special Appointment: oil pollution*)

November 1972

JOURNAL OF THE MARINE BIOLOGICAL ASSOCIATION
INSTRUCTIONS FOR THE PREPARATION
OF MANUSCRIPTS

TITLE

The title of the paper should be kept as short as possible.

The name of the author at the beginning of the paper should be followed only by senior qualifications.

TEXT

Manuscripts must be typed (double-spaced) on one side of the paper, leaving ample margins, with the folios numbered. Words to be printed in italic should be underlined. The first mention of Latin names of species should be followed by the authority, except where reference is made to a work in which the authority appears (e.g. *Plymouth Marine Fauna*).

Manuscripts should be as concise as possible. Undue length will undoubtedly lead to delay in publication as the paper will be returned to the author for shortening.

All linear measurements and weights should be in the metric scale.

For symbols and abbreviations, the recommendations of the Royal Society (1951) are followed.

TABLES

Tables should be set out on separate sheets numbered in Arabic numerals, and given a concise heading.

TEXT-FIGURES

Text-figures should be in black ink. It is important to make the lines sufficiently black. Areas to be mechanically stippled should be indicated by light-blue pencil shading.

No drawing should be so large that it must be reduced to less than one-third of its original size. The degree of reduction need not be inserted by the author.

Illustrations requiring lettering should not be drawn on Ethulon.

The size of the printed area of the *Journal* page is 20 × 13.5 cm. The maximum size for a full-page figure (with legend) is 21 × 14 cm.

Lettering, numerals, etc., should be marked clearly in blue pencil and indicating the position in which they are to be inserted by an arrow in blue pencil. This should be kept to a workable minimum, all details being included in the legend.

Authors are requested to see that their manuscripts are in finished form and completely ready for publication so that corrections may be reduced to a minimum, and these are confined as far as possible to the first proof. If the cost for corrections exceeds a reasonable figure, the author is liable to be charged the full extent of the excess.

Axes and graduation marks on graphs must be inked in. The lines on graph paper are not normally reproduced, and should be blue or faint grey.

Legends for figures must be typed all together on a separate sheet, and not inserted on the actual illustrations.

Text-figures are numbered in arabic numerals, and referred to in the text as 'Fig. 1', etc. Where there is a plate containing several figures, the text-figures are referred to as 'Text-fig. 1', etc.

All line-drawings are printed as text-figures, as well as photographs for which fine detail is not required.

PLATES

Photographs should be on smooth-surfaced paper, semi-matt or glossy. The edges of the photograph must be trimmed square. It is important that the background in the photograph be of a uniform tone and free from blemishes.

Divisions of plates, or separate figures on one plate, are indicated by capital letters.

SUMMARY

Each paper must be accompanied by an informative Summary, giving the main results of the work published.

REFERENCES

References are listed alphabetically at the end of the paper. The full title of the paper must be given. Titles of papers, but not of books, are decapitalized. Titles of Journals are given in full. Where a volume appears in parts the part need only be specified where each has separate pagination. References to books should include the publisher. Citations in text to be given by author's name followed by date in brackets.

Examples:

MARSHALL, S. M., NICHOLLS, A. G. & ORR, A. P., 1939. On the growth and feeding of young herring in the Clyde. *Journal of the Marine Biological Association of the United Kingdom*, 23, 427-55.

RUSSELL, F. S. & YONGE, C. M., 1928. *The Seas*. 379 pp. London: Frederick Warne.

SUBSCRIPTIONS

Journal of the Marine Biological Association of the United Kingdom is published quarterly. Single parts cost £6.00 net (\$19.00 in the U.S.A.) plus postage.

Four parts form a volume. The subscription price of a volume (which includes postage) is £22.00 net (\$70.00 in the U.S.A.).

Second class postage paid at New York, N.Y.

THE JOURNAL OF ANIMAL ECOLOGY

EDITORS: H. N. SOUTHERN and E. BROADHEAD

VOL. 41, No. 3

OCTOBER 1972

- P. M. Room.** The constitution and natural history of the fauna of the mistletoe *Tapinanthus bangwensis* (Engl. & K. Krause) growing on cocoa in Ghana.
- B. E. Freeman and C. A. Adams.** The spatial and temporal distribution of adult Tipulidae (Diptera) at Hothfield Heath, Kent.
- J. R. Flowerdew.** The effect of supplementary food on a population of wood mice (*Apodemus sylvaticus*).
- Philip H. Smith.** The energy relations of defoliating insects in a hazel coppice.
- D. J. W. Rose.** Dispersal and quality in populations of *Cicadulina* species (Cicadellidae).
- P. M. Room.** The fauna of the mistletoe *Tapinanthus bangwensis* (Engl. & K. Krause) growing on cocoa in Ghana: relationships between fauna and mistletoe.
- R. Williams.** The abundance and biomass of the interstitial fauna of a graded series of shell-gravels in relation to the available space.
- J. M. Cherrett.** Some factors involved in the selection of vegetable substrate by *Atta cephalotes* (L.) (Hymenoptera: Formicidae) in tropical rain forest.
- M. P. Hassell and D. J. Rogers.** Insect parasite responses in the development of population models.
- P. P. de Moor and F. E. Steffens.** The movements of vervet monkeys (*Cercopithecus aethiops*) within their ranges as revealed by radio-tracking.
- A. F. G. Dixon.** Control and significance of the seasonal development of colour forms in the sycamore aphid, *Drepanosiphum platanoides* (Schr.).
- D. J. Solomon and A. E. Brafield.** The energetics of feeding, metabolism and growth of perch (*Perca fluviatilis* L.).
- C. R. Boyden and P. J. C. Russell.** The distribution and habitat range of the brackish water cockle (*Cardium (Cerastoderma) glaucum*) in the British Isles.
- Louise Muntz, T. A. Norton, F. J. Ebling and J. A. Kitching.** The ecology of Lough Ine. XVIII. Factors controlling the distribution of *Corynactis viridis* Allman.
- A. F. G. Dixon and M. Logan.** Population density and spacing in the sycamore aphid, *Drepanosiphum platanoides* (Schr.), and its relevance to the regulation of population growth.
- D. Pallant.** The food of the grey field slug, *Agriolimax reticulatus* (Müller), on grassland.

REVIEWS; SHORT NOTICES

ABSTRACTS

Subscription price £14.00 per volume of three parts (single parts £5.25 each)

BLACKWELL SCIENTIFIC PUBLICATIONS LTD
OSNEY MEAD · OXFORD

THE JOURNAL OF ECOLOGY

EDITORS: A. J. WILLIS and P. J. GRUBB

VOL. 60, No. 3

NOVEMBER 1972

- M. B. Dale and D. J. Anderson.** Qualitative and quantitative information analysis.
- Forrest L. Johnson and Paul G. Risser.** Some vegetation–environment relationships in the upland forests of Oklahoma.
- Arun Kumar and M. C. Joshi.** The effects of grazing on the structure and productivity of the vegetation near Pilani, Rajasthan, India.
- L. J. Webb, J. G. Tracey and W. T. Williams.** Regeneration and pattern in the subtropical rain forest.
- Mohamed Nazir Sankary and Michael G. Barbour.** Autecology of *Haloxylon articulatum* in Syria.
- Y. Gutterman and M. Evaneri.** The influence of daylength on seed coat colour, an index of water permeability, of the desert annual *Ononis sicula* Guss.
- J. H. Tallis and J. McGuire.** Central Rossendale: the evolution of an upland vegetation. I. The clearance of woodland.
- P. S. Lloyd.** The grassland vegetation of the Sheffield region. II. Classification of grassland types.
- J. G. Jones.** Studies on freshwater micro-organisms: phosphatase activity in lakes of differing degrees of eutrophication.
- R. J. Summerfield.** Biological inertia—an example
- P. G. Holland.** The pattern of species density of old stone walls in western Ireland.
- J. Ayo Owoseye and William W. Sanford.** An ecological study of *Vellozia schnitzleinia*, a drought-enduring plant of northern Nigeria.
- Patrick Denny.** Sites of nutrient absorption in aquatic macrophytes.
- Peter G. Kevan.** Insect pollination of high Arctic flowers.
- Daniel B. Botkin, James F. Janak and James R. Wallis.** Some ecological consequences of a computer model of forest growth.
- T. Frey and H. van Groenwoud.** A cluster analysis of the D^2 matrix of white spruce stands in Saskatchewan based on the maximum–minimum principle.
- S. S. C. Onyekwelu.** The vegetation of dune slacks at Newborough Warren. I. Ordination of the vegetation.
- S. S. C. Onyekwelu.** The vegetation of dune slacks at Newborough Warren. II. Pattern of *Carex serotina*, *Leontodon taraxacoides* and *Salix repens*.
- S. S. C. Onyekwelu.** The vegetation of dune slacks at Newborough Warren. III. *Plantago coronopus*.
- Brian Moss.** The influence of environmental factors on the distribution of freshwater algae: an experimental study.

REVIEWS

Subscription price £14.00 per volume of three parts (single parts £5.25 each)

BLACKWELL SCIENTIFIC PUBLICATIONS LTD
OSNEY MEAD · OXFORD