

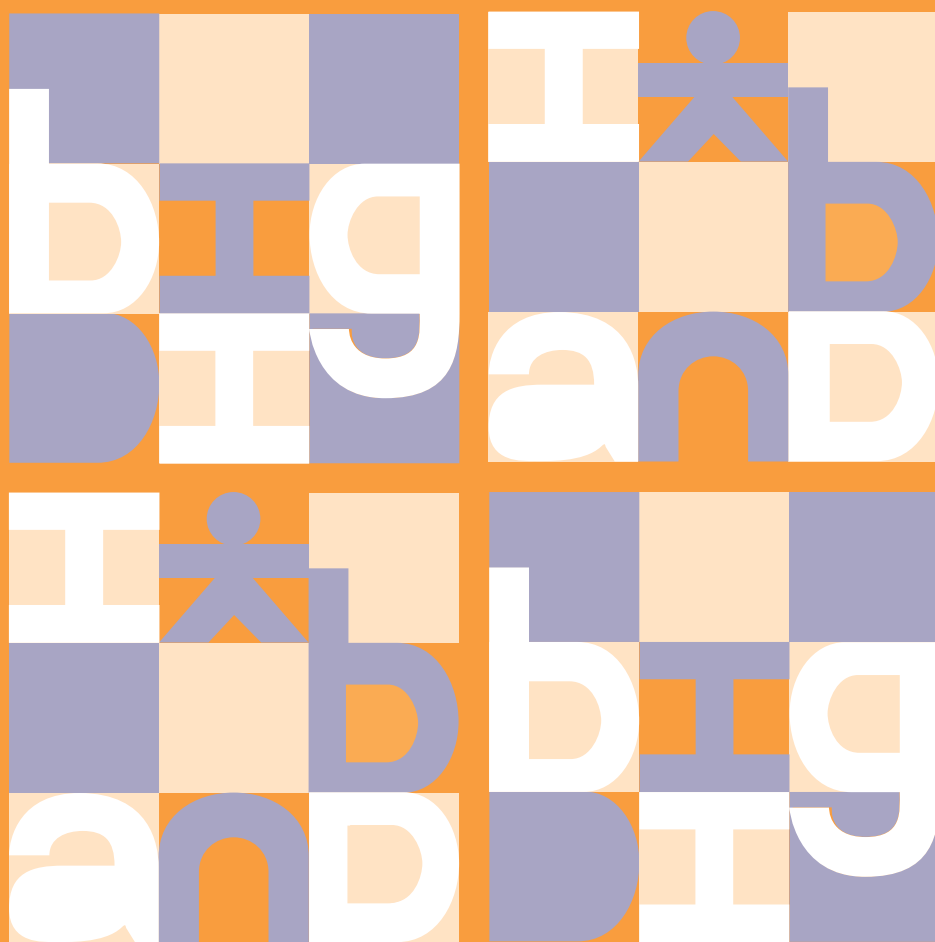
Journal of Child Language

ISSN 0305-0009

Volume 39

NUMBER 1

JANUARY 2012



CAMBRIDGE
UNIVERSITY PRESS

Journal of **Child Language**

The Journal of the International Association for the Study of Child Language

Editor Heike Behrens *University of Basel*

Associate Editors Misha Becker *University of North Carolina* Carol Stoel-Gammon *University of Washington*
Aylin Küntay *Koç University*
Letitia Naigles *University of Connecticut* Stephanie Stokes *University of Canterbury, New Zealand*
Caroline Rowland *University of Liverpool*

Editorial Assistant Miles Lambert

Founding Editor David Crystal *(Bangor)*

Editorial Board

S. Allen *(Kaiserslautern)*
E. Bavin *(La Trobe)*
R. Berman *(Tel Aviv)*
M. Bowerman† *(Nijmegen)*
H. Clahsen *(Potsdam)*
E. Clark *(Stanford)*
P. Dale *(New Mexico)*
A. De Houwer *(Erfurt)*
K. U. Deen *(Hawai'i)*
K. Demuth *(Macquarie)*
P. Fletcher *(Cork)*
S. Gelman *(Michigan)*
R. Golinkoff *(Delaware)*
M. T. Guasti *(Milan)*
E. Hoff *(Florida Atlantic)*
J. Iverson *(Pittsburgh)*
H. Jisa *(Lyon)*
M. Kehoe-Winkler *(Geneva)*
E. Lieven *(Leipzig)*
B. MacWhinney *(Carnegie Mellon)*
R. Mayberry *(San Diego)*
Y. Oshima-Takane *(McGill)*
A. Peters *(Hawai'i)*
L. Serratrice *(Manchester)*
(The Secretary of the
International Association
for the Study of Child
Language)
D. Slobin *(Berkeley)*
J. Snedeker *(Harvard)*
H. Storkel *(Kansas)*
M. Tomasello *(Leipzig)*
M. Vihman *(York)*
J. Werker *(British Columbia)*

Editorial Policy

The journal publishes material on all aspects of the scientific study of language in children, the principles which underlie it, and the theories which may account for it. Articles can report findings from naturalistic observations or experiments; and the subject-matter may include phonology, phonetics, morphology, syntax, vocabulary, semantics, pragmatics, sociolinguistics, or any other recognized facet of language study. Articles may concern the acquisition of one language, or they may have a crosslinguistic focus; they may relate to the study of individuals or of groups of children. Articles should make a theoretical, conceptual and/or methodological advance in our understanding of language development in children.

Abstracting

The journal is covered by relevant abstracting and indexing services including:

Abstracts in Anthropology, Association for Education and Rehabilitation of the Blind and Visually Handicapped Yearbook, Applied Social Sciences Index & Abstracts, Bibliography of Developmental Medicine & Child Neurology, British Education Abstracts, Chicorel Abstracts to Reading and Learning Disabilities, Child Development Abstracts, Communication Abstracts, Current Contents, Current Index to Journals in Education, Education Index, Education Resources Information Center (ERIC), Language Teaching, Linguistic Abstracts, Linguistic Bibliography, Linguistics and Language Behavior Abstracts, Psychological Abstracts, Sage Family Studies Abstracts, Social Science Citation Index, Sociological Abstracts

Published online by Cambridge University Press

Editorial

I am pleased and honoured to be appointed editor of this Journal. First, I would like to pay tribute to Edith Bavin for the tremendous amount of hard and thorough work she has put into the Journal during the past years. Together with Letitia Naigles she will be the editor of a forthcoming special issue on language impairment. I would also like to thank Shanley Allen, Erika Hoff and Margaret Kehoe-Winkler for their work as Associate Editors. They contributed to the quality of the journal with their careful and balanced judgement.

We welcome Carol Stoel-Gammon and Caroline Rowland as new members of the editorial team. Together with Misha Becker, Letitia Naigles and Stephanie Stokes as well as the Editorial Assistant Miles Lambert we hope to maintain the high standard set by the previous editors and their team.

The Journal will continue to publish review and commentary sections as well as special issues to address current debates and important research areas in depth. But I would also very much like to keep the Journal a forum for language acquisition research in its full breadth: Language development in and across different languages and under different conditions, from various theoretical perspectives and with state-of-the-art methods.

As this issue went to press, we received the sad news that our dear colleague and long-term member of the editorial board Melissa Bowerman passed away at the age of 69. The inquisitiveness with which she analysed the semantic basis of language in its linguistic diversity is unsurpassed, and so is the influence on her colleagues and students as a warm and caring friend.

HEIKE BEHRENS
Editor, JCL