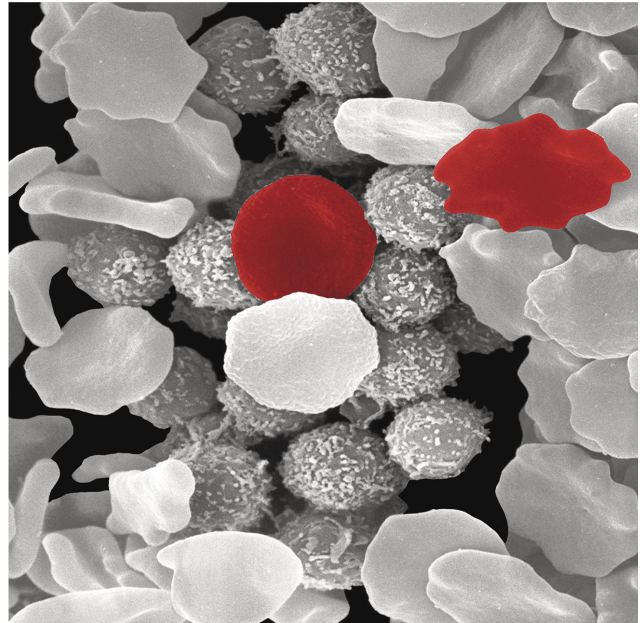
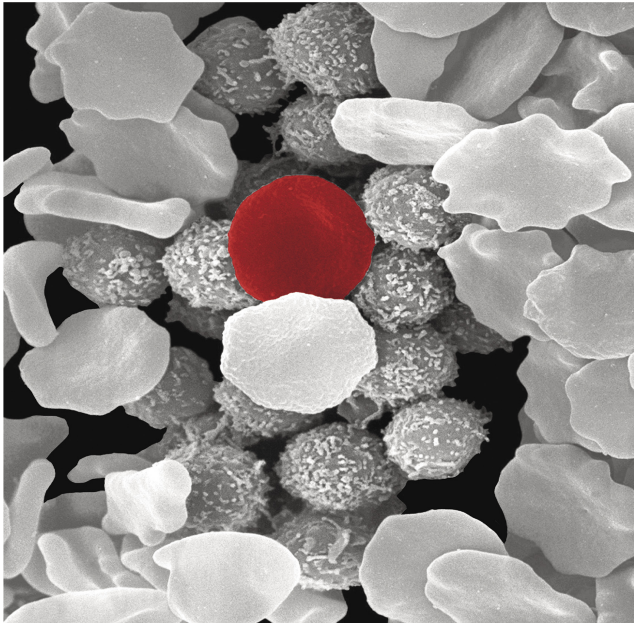
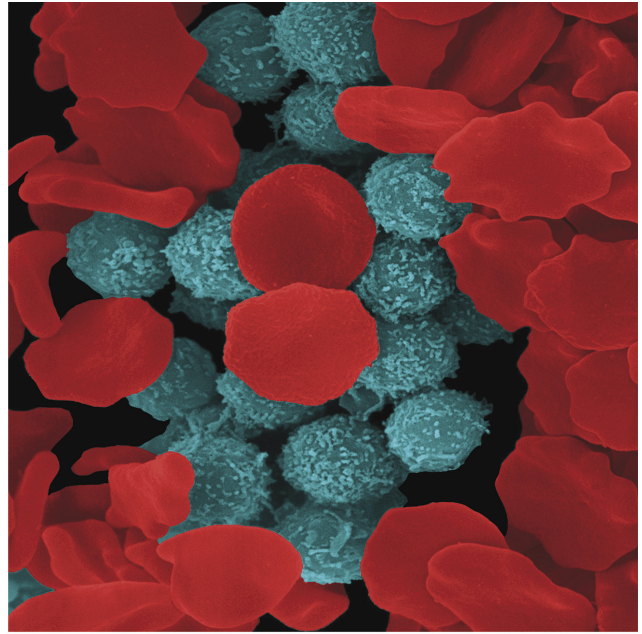
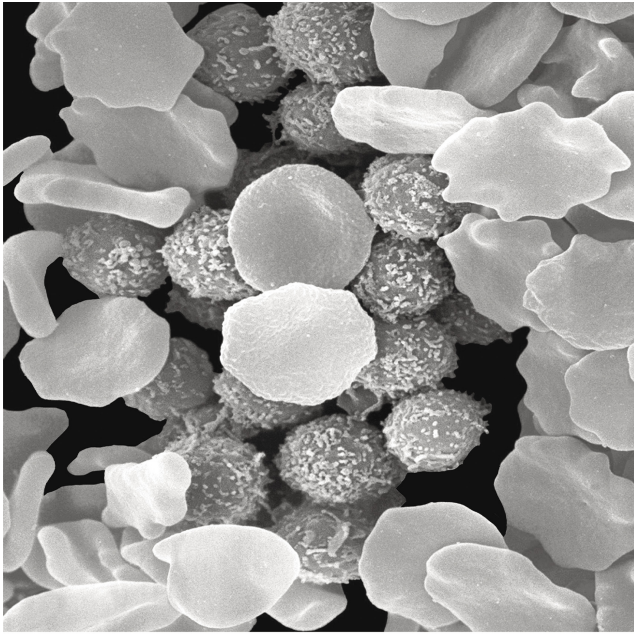


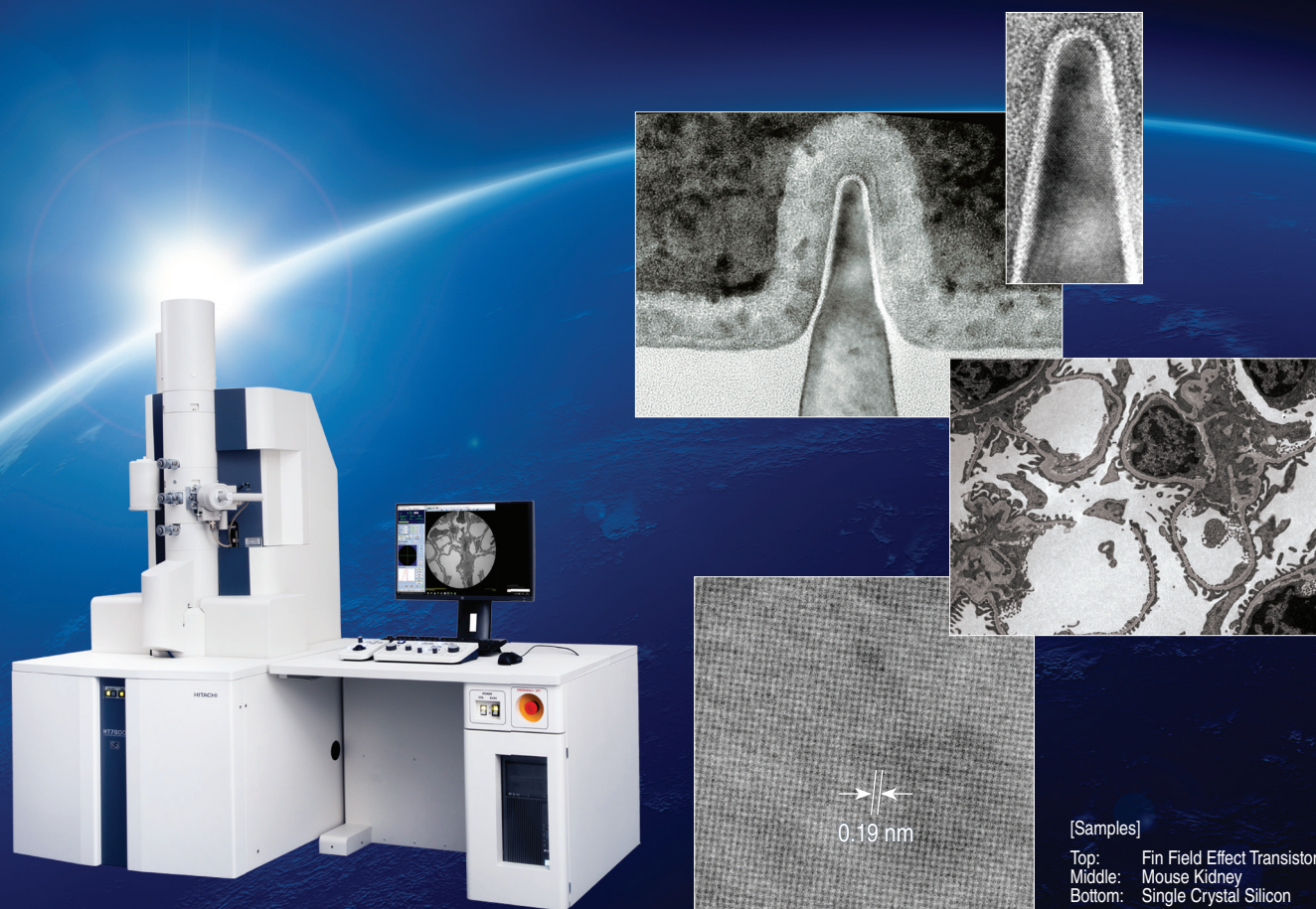
Microscopy TODAY

Volume 26 Number 3 2018 May



The NEXT Generation of 120 kV TEM

Innovation, Performance, and Reliability—The All New Hitachi *HT7800* Series



Hitachi's advanced electron optics and dual-mode lens technology redefine the boundaries of 120 kV TEM performance. With ≤ 0.19 nm on-axis resolution, the highest contrast in its class, and diverse analytical capabilities for Material Science and Life Science fields, the *HT7800* Series provides a complete solution for all your TEM imaging needs.

For more details, contact us at: microscopy@hitachi-hta.com

Think Outside the Lab

PAPER SUBMISSION PORTAL:

Opens December 2017

SUBMISSION DEADLINE:

February 15, 2018



M&M 2018 **MICROSCOPY &** **MICROANALYSIS**

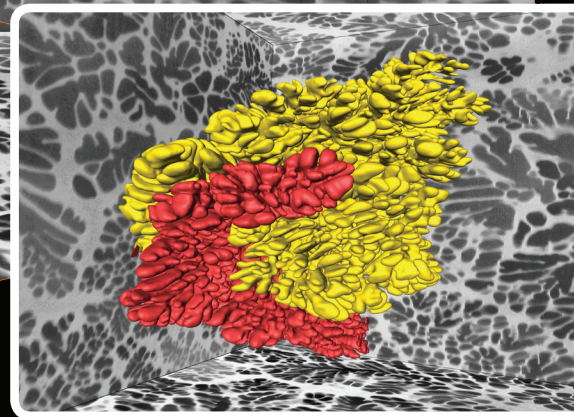
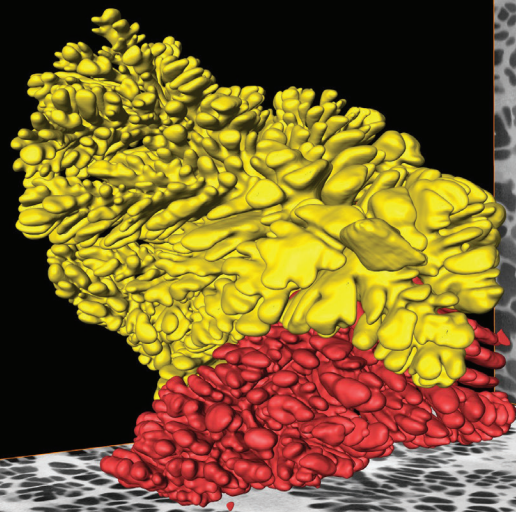
August 5-9, 2018 • Baltimore, MD



www.microscopy.org/MandM/2018

- 500** poster presentations over 4 days
- >120** companies in the largest microscopy-related exhibit hall in the world
- 70** FREE Vendor Tutorials
- 35** named symposia in Physical, Biological, and Analytical Sciences
- 7** traditional day-long Sunday Short Courses
- 3** in-depth, pre-meeting Congresses on featured topics, featuring platform and poster presentations and networking
- 2** fascinating Plenary Session speakers (on 50-cent microscopes, and finding micrometeorites on your roof!)
- + 1** vibrant, historic, waterfront city (with 650 daily flights from 70 destinations)

= M&M 2018 in BALTIMORE!
DON'T MISS OUT!



Thermo Scientific™ Avizo™ 3D visualization of two large adjacent crystalline dendrites of a bulk-metallic-glass matrix composite ($Zr_{58.5}Ti_{14.3}Nb_{5.2}Cu_{6.1}Ni_{4.9}Be_{11.0}$). Data was obtained by large volume serial sectioning tomography using the Thermo Scientific Helios™ PFIB DualBeam™ microscope. The sectioned block is about $90 \times 80 \times 70 \mu m^3$. Sample from The University of Tennessee, USA. Images courtesy of The University of Manchester.

Large 3D volumes with unprecedented surface resolution

Until recently, available technologies have limited the volumes and depths of materials that can be analyzed at high resolution, ultimately restricting the insight into structural, crystallographic, and chemical properties. This is no longer the case. The Thermo Scientific Helios PFIB DualBeam microscope offers unrivaled access to regions of interest deep below the surface—combining serial section tomography with statistically relevant data analysis.

Find out more at thermofisher.com/EM-Sales

ThermoFisher
SCIENTIFIC

Contents

Scanning Electron Microscopy

12 Color (and 3D) for Scanning Electron Microscopy

Christophe Mignot

Scanning Probe Microscopy

18 Virtual Scanning Tunneling Microscope Offered as a Free-Download

Mark Hagmann, Greg Spencer, and Jeremy Wiedemeier

Materials Applications

24 From Atoms to Functional Nanomaterials: Structural Modifications as Observed Using Aberration-Corrected STEM

S. I. Sanchez, L. F. Allard, M. T. Schaal, S. M. Tonnesen, Y. Le, S. A. Bradley, P.L. Bogdan, and G. J. Gajda

32 Measurement of Grain Boundary Properties in Cu(In,Ga)Se₂ Thin Films

S. Rozeveld, C. Reinhardt, E. Bykov, and A. Wall

Microscopy 101

40 Preparation of Cross Sections of Difficult Materials for SEM Imaging

Scott A. Payne and Jayma A. Moore

Meeting Preview

46 Microscopy & Microanalysis 2018

Yousuf Picard

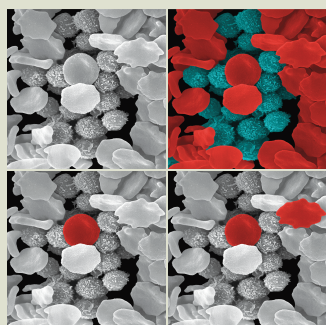
Highlights from *Microscopy and Microanalysis*

54 The Influence of Beam Broadening on the Spatial Resolution of Annular Dark Field Scanning Transmission Electron Microscopy

54 Early Effects of Ionizing Radiation on the Collagen Hierarchical Structure of Bladder and Rectum Visualized by Atomic Force Microscopy

55 Polarization Microscopy and Infrared Microspectroscopy of Integument Coverings of Diapausing Larvae in Two Distantly Related Nonsocial Bees

About the Cover



Scanning electron microscope (SEM) image of blood cells from a patient with chronic lymphocytic leukemia. Color added using MountainsMap[®] software. Counterclockwise from upper left: erythrocytes and B lymphocyte white blood cells (original image); colorized normal erythrocyte (red); colorized abnormal and normal erythrocytes (red); colorized erythrocytes (red) and B lymphocyte white blood cells (turquoise). Image width = 30 μm.

See article by Mignot.

Departments

7 Editorial

8 Carmichael's Concise Review

48 Pioneers

50 Industry News

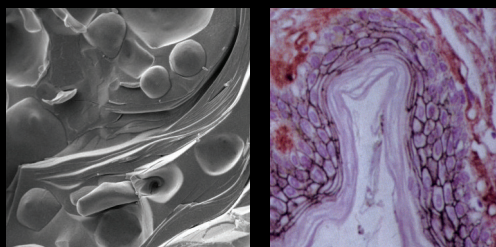
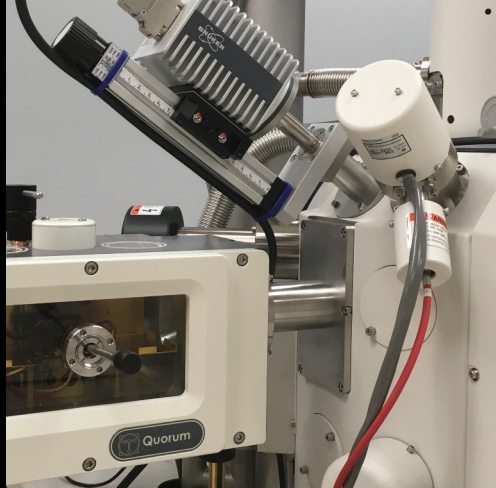
52 Product News

56 NetNotes

61 Calendar of Meetings

65 Dear Abbe

66 Index of Advertisers



Spacious Labs
 State-of-the-Art Equipment
 Certified Instructors
 New Equipment Demos

<https://doi.org/10.1017/S1551929518000148> Published online
 Cambridge University Press

Announcing the

EMS Microscopy Academy

We are excited to announce that our new academy is now open! We are now offering training courses and workshops led by our certified faculty. Located next to our extensive warehouse in Hatfield, PA, just minutes from Philadelphia, we are now also offering demonstrations of new equipment. Take advantage of the knowledge Electron Microscopy Sciences is now able to provide and the valuable information you will gain.

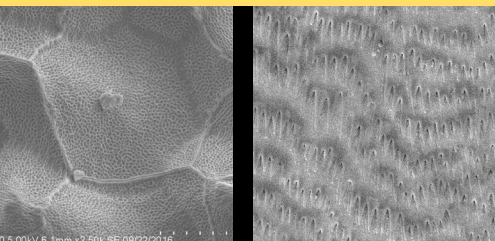
"An abundance of practical info, built on the necessary theoretical background!"

– Aurion Workshop Attendee

COURSES

- Aurion Immuno Gold
- Biological SEM
- Biological TEM
- Cryosectioning/Immunogold
- Cryo SEM
- Materials Ultramicrotomy
- Pharma Applications
- Pharma Polymorphism
- X-Ray Microanalysis

SIGN UP FOR A CLASS TODAY, OR SUGGEST A COURSE THAT YOU WANT...



VISIT OUR WEBSITE TO MAKE A COURSE REQUEST...

www.emsdiasum.com

**Electron
 Microscopy
 Sciences**

P.O. Box 550 • 1560 Industry Rd.
 Hatfield, Pa 19440
 Tel: (215) 412-8400
 Fax: (215) 412-8450
 email: sgkcck@aol.com
 or stacie@ems-secure.com