

INTERNATIONAL ASTRONOMICAL UNION

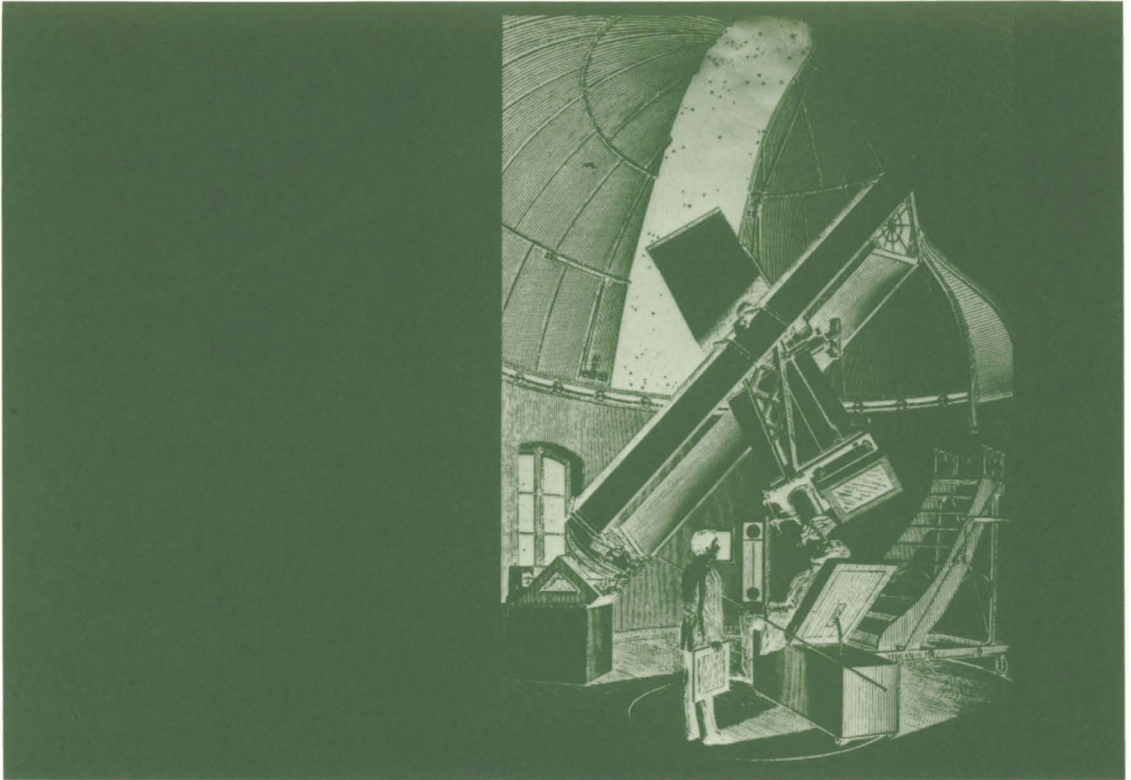
SYMPOSIUM No. 133

# MAPPING THE SKY

## PAST HERITAGE AND FUTURE DIRECTIONS

Edited by

S. DÉBARBAT, J. A. EDDY, H. K. EICHHORN and A. R. UPGREN



INTERNATIONAL ASTRONOMICAL UNION

KLUWER ACADEMIC PUBLISHERS

**MAPPING THE SKY**  
**PAST HERITAGE AND FUTURE DIRECTIONS**

INTERNATIONAL ASTRONOMICAL UNION  
UNION ASTRONOMIQUE INTERNATIONALE

# MAPPING THE SKY

## PAST HERITAGE AND FUTURE DIRECTIONS

PROCEEDINGS OF THE 133RD SYMPOSIUM OF THE  
INTERNATIONAL ASTRONOMICAL UNION  
HELD IN PARIS, FRANCE, JUNE 1-5, 1987

EDITED BY

S. DEBARBAT

*Observatoire de Paris, Paris, France*

J. A. EDDY

*University Cooperation for Atmospheric Research,  
Boulder, Colorado, U.S.A.*

H. K. EICHHORN

*Department of Astronomy, University of Florida,  
Gainesville, Florida, U.S.A.*

and

A. R. UPGREN

*Van Vleck Observatory, Wesleyan University,  
Middletown, Connecticut, U.S.A.*



KLUWER ACADEMIC PUBLISHERS

DORDRECHT / BOSTON / LONDON



Library of Congress Cataloging in Publication Data

International Astronomical Union. Symposium (133rd : 1987 : Paris, France)

Mapping the sky : past heritage and future directions : proceedings of the 133rd Symposium of the International Astronomical Union, held in Paris, France, 1-5 June 1987 / edited by S. Debarbat ... [et al.].

p. cm.

Includes index.

ISBN 9027728097. ISBN 9027728100 (pbk.)

1. Astrometry--Congresses. 2. Astronomy--Charts, diagrams, etc.--Congresses. 3. Parallax--Observations--Congresses. I. Débarbat, Suzanne. II. Title.

QB807.I57 1987

523--dc19

88-23240

CIP

ISBN 90-277-2809-7

ISBN 90-277-2810-0 (pbk.)

---

*Published on behalf of  
the International Astronomical Union  
by*

*Kluwer Academic Publishers, P.O. Box 17, 3300 AA Dordrecht, The Netherlands.*

*Kluwer Academic Publishers incorporates  
the publishing programmes of  
D. Reidel, Martinus Nijhoff, Dr W. Junk and MTP Press.*

*Sold and distributed in the U.S.A. and Canada  
by Kluwer Academic Publishers,  
101 Philip Drive, Norwell, MA 02061, U.S.A.*

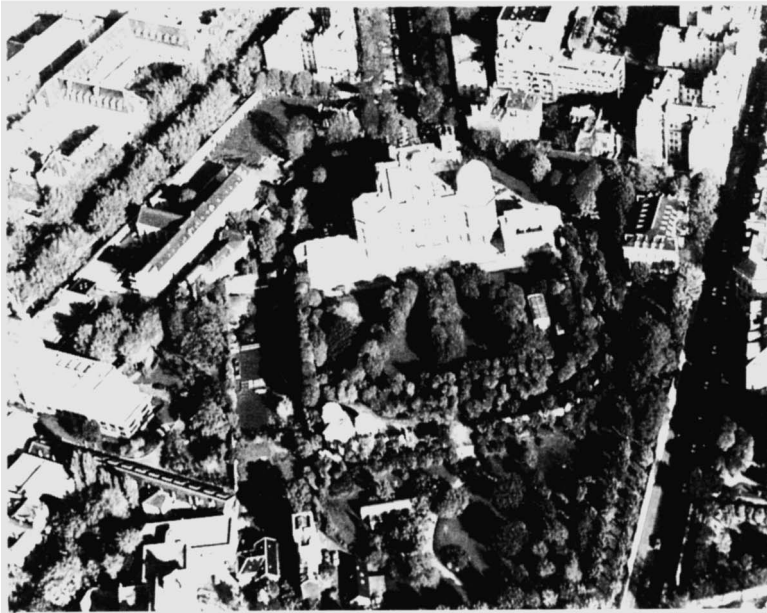
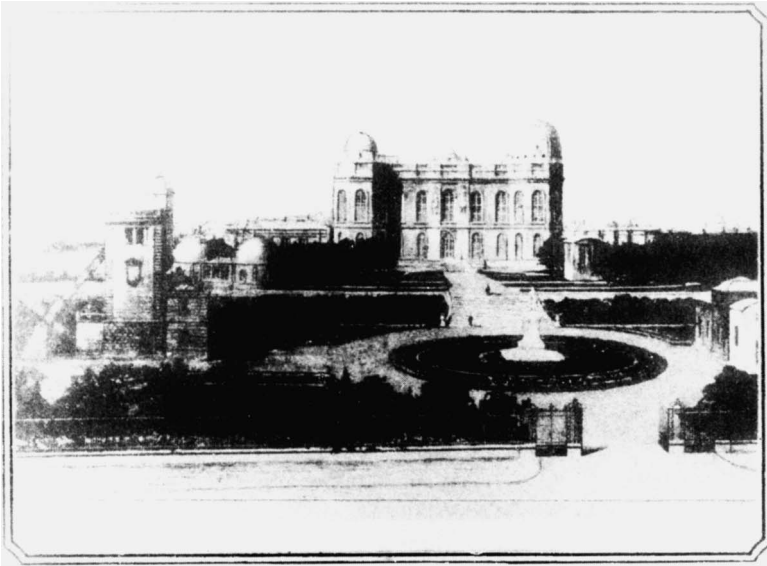
*In all other countries, sold and distributed  
by Kluwer Academic Publishers Group,  
P.O. Box 322, 3300 AH Dordrecht, The Netherlands.*

*All Rights Reserved*

© 1988 by the International Astronomical Union

*No part of the material protected by this copyright notice may be reproduced or utilized in any form or by any means, electronic or mechanical, including photocopying, recording or by any information storage and retrieval system, without written permission from the publisher.*

*Printed in The Netherlands*



L'Observatoire de Paris en 1887 (sur) et 1987 (sous)  
Document Bibliothèque de l'Observatoire de Paris et  
Interphotothèque de la Documentation française

## TABLE OF CONTENTS

PREFACE	xiii
LIST OF PARTICIPANTS	xv
Introduction <b>A. Upgren</b>	1
Allocution De Bienvenue <b>Y. Laporte</b>	3
L'Astronomie Au College De France <b>J.C. Pecker</b>	5
Oriental Star Maps <b>F.R. Stephenson</b>	11
A New Approach To Traditional Chinese Astronomy <b>J. Kistemaker and Y. Zhengzong</b>	23
Naissance Et Developpement De La Carte Du Ciel En France <b>T. Weimer</b>	29
The Greenwich And Oxford Astrographic Telescopes 1958-1987 <b>D.H.P. Jones</b>	33
Past, Present, And Future Of Photographic Surveys <b>A. Maury</b>	39
The Carte Du Ciel - The Australian Connection <b>G.L. White</b>	45
Protohistoire De La Machine A. Mesurer Les Cliches Astronmiques <b>D. Fauque</b>	53
T.N. Thiele And The Carte Du Ciel <b>L.K. Kristensen</b>	59
The "Carte Du Ciel" Instrument Of San Fernando: A Century Of Activity <b>A. Orte</b>	65
The Third Reduction Of Giuseppe Piazzi's Star Catalogue <b>E. Proverbio</b>	75
Refraction In Tycho Brahe's Small Universe <b>K.P. Moesgaard</b>	87

Fundamental Catalogues <b>W. Gliese</b>	95
Documents Pour Une Exposition : La Carte Du Ciel <b>S. Debarbat</b>	103
Preserving The Past: Archival Preservation Of Observatory Publications Via An Optical Disk Project <b>B.G. Corbin</b>	115
The First Successful Attempts To Determine Stellar Parallaxes In The Light Of The Bessel/Struve Correspondence <b>W.R. Dick and G. Ruben</b>	117
Astrometry With The Yale Heliometer, 1882-1910 <b>D. Hoffleit and W. van Altena</b>	123
"Petite histoire" du Congres astrophotographique de 1887 <b>A.M. Motais de Narbonne</b>	129
Astrographic Catalogues Of British Observatories <b>N.P.J. O'Hora</b>	135
The Grubb Astrographic Telescopes, 1887-1896 <b>P.A. Wayman</b>	139
David Gill And Celestial Photography <b>C.A. Murray</b>	143
Construction Of The System Of Positions And Proper Motions In The FK5 <b>H. Schwan</b>	151
Mapping Coordinate System Irregularities On The Celestial Sphere P.D. Hemenway, A.L. Whipple and R.L. Duncombe	159
Compilation Of The Nirs Using The Eichhorn Method <b>C.S. Cole</b>	165
Recovery of the Astrographic Catalogue J. Stock and C. Abad	171
The Development Of The Overlapping-Plate Method <b>H. Eichhorn</b>	177
Rigorous Block-Adjustment Of The CPC2 Cape Zone <b>N. Zacharias</b>	201
Match Criteria for Automatic Alignment of Normal Astrograph and Schmidt Plate A. Fresneau	207

Status Of Photographic Catalogs: Available Material And Future Developments Ch. de Vejt	211
The Guide Star Catalog.I. Overview, History And Prospective. B.M. Lasker, H. Jenkner, and J.L. Russell	229
The Guide Star Catalog.II. Astrometric And Photometric Algorithms And Precision J.L. Russell, B.M. Lasker, and H. Jenkner	235
The Guide Star Catalog. III. Structure And Publication, Status and Plans. H. Jenkner, J.L. Russell, and B.M. Lasker	239
A Very Special Catalogue : The Hipparcos Input Catalogue. C. Turon	245
Hipparcos : An Example Of Astrophysical Uses Of Astrometric Data. A.E. Gómez and F. Crifo	259
The Tycho Survey Of Stars Brighter than Eleventh D. Egret and E. Høg	265
The Yale Parallax Catalogue W.F. van Altena and J.T. Lee	269
The Lick Northern Proper Motion Program R.B. Hanson	275
The Tarija-Pulkovo Astrographic Catalogue Of The Southern Sky: First Results And Perspectives N.F. Bystrov, D.D. Polozhentsev, Kh.I. Potter, L.I. Yagudin, J.A. Zelaya, R.F. Zalles	285
A Catalog Of Reference Stars For New Reductions Of The Astrographic Catalog Plates T.E. Corbin and S.E. Urban	287
Precise Proper Motions And Positions Of Stars From A Combination Of Fundamental Catalogues With The Hipparcos Catalogue R. Wielen	293
Proper Motions From Carte Du Ciel Plates W.J. Luyten	301
Linking Hipparcos To Extragalactic Reference Frame (Task Of Input Catalogue Subgroup 2130) A.N. Argue	305



Radio Mapping <b>E.R. Deul and W.B. Burton</b>	311
Radio Continuum Surveys Of The Sky <b>R. Wielebinski</b>	323
The Second Palomar Sky Survey <b>N. Reid</b>	331
The Naval Observatory "Short" Plate Being Taken As Part Of The Palomar Sky Survey II <b>D.G. Monet</b>	337
The Infrared Astronomical Satellite Survey Of The Sky <b>T. Chester</b>	341
Mapping The Sky - Surveys With Schmidt Telescopes <b>D.H. Morgan and S.B. Tritton</b>	349
The Contribution Of The Danjon Astrolabe To The Improvement Of The Fundamental Reference System at The Southern Hemisphere <b>F. Noel</b>	359
Mapping The Sky With The Carlsberg Automatic Meridian Circle <b>L.V. Morrison, L. Helmer and L. Quijano</b>	369
Astrometry And Data Centers <b>C. Jaschek</b>	375
Proper Motion Of Determination Of The X-Ray Object 3A2254- 033 Using The Astrographic Catalogue Of The San Fernando Zone <b>A.N. Argue and L. Quijano</b>	385
The Compared Efficiency Of Centering Algorithms <b>O. Bienayme, C. Motch, M. Creze and S. Considere</b>	389
Presentation Technique De L'Astrolabe Photoelectrique Du Cerga <b>G. Billaud, R. Boche, M. Furia and G. Vigourous</b>	393
Paris Full Pupil Astrolabe And Danjon's Prism Astrolabe A Statistical Comparison In Terms Of Time-Magnitude-Colour Equation <b>M.L. Bougeard</b>	397
Astrometry With Carte Du Ciel Plates <b>P. Brosche and M. Geffert</b>	403
Vers Un Nouveau Catalogue General Astrolabes <b>F. Chollet</b>	407

The Carte Du Ciel And The Catalogue Photographic Plates Of The Bordeaux Observatory <b>J. Colin and G. Soulie</b>	411
Current Status Of The Second Cape Photographic Cctalogue <b>Chr. de Vegt, N. Zacharias, M.J. Penston and C.A. Murray</b>	415
A Prototype Detector For The Astrometric Telescope Facility <b>G. Gatewood, M.W. Castelaz, E.H. Levy, R.S. McMillan, K. Nishioka, J.D. Scargle and J.W. Stein</b>	421
The Mama Machine: Proper Motions From Digitization Of Centenary Plates <b>J. Guibert</b>	425
Solar Motion And Galactic Rotation: Results From The Lick Northern Proper Motion Program <b>R.B. Hanson</b>	427
Towards The Definition Of A Unified Celestial Optical/Radio Reference Frame <b>J. Hughes, K.J. Johnston, and Ch. de Vegt</b>	433
The Minnesota Automated Plate Scanner: A New User Facility <b>R.L. Pennington, R.M. Humphreys and F.D. Ghigo</b>	437
A Program For A New Reduction Of Plates Of The Astrographic Catalogue <b>S. Roser and H. Jahreis</b>	441
NASA's Astrometric Telescope Facility <b>J.D. Scargle, K. Nishioka and G. Gatewood</b>	445
The Tautenburg Part Of The Programme Studying The Main Meridional Section Of The Galaxy <b>E. Schilbach</b>	451
Optical Positions And Proper Motions Of Selected Radio Stars <b>H.M. Schwerdtfeger, R. Hering, H.G. Walter and H. Jahreis</b>	455
The JPL 1986-3 Extragalactic Reference Frame <b>O.J. Sovers, C.D. Edwards, C.S. Jacobs, G.E. Lanyi and R.N. Treuhaft</b>	461
Proper Motions Of 47 TUC And NGC 362 Relative To The Smallo Magellanic Cloud <b>E.-J Tucholke</b>	465

Precision Of Parallaxes From Automatic And Manual Measures From New Parallaxes Of The Hyades Cluster Region <b>A.R. Upgren, E.W. Weis, H.-H. Fu and J.T. Lee</b>	469
The Space Luminosity And Velocity Distribution Of Faint Stars <b>W.F. van Altena, J.T. Lee, W.S. Tsay, and P.K. Lu</b>	475
The Parallax And Proper Motion Program Of The Shanghai Observatory 1.56-M Astrometric Reflector <b>W. Jia-ji</b>	479
A Proposal For Mapping The Sky At Deka-Hectometer Wavelengths: The LFSA <b>K.W. Weiler, B.K. Dennison, K.J. Johnston, R.S. Simon, J.H. Spencer, W.C. Erickson, M.L. Kaiser, H.V. Cane, M.D. Desch, and L.M. Hammarstrom</b>	483
Mapping The Radio Sky: Compact Radio Quasars From The Parkes 2.7 GHz Survey <b>D.L. Jauncey, G.L. White, B.R. Harvey, M.J. Batty, A.E. Wright, A. Savage, B.A. Peterson, W.L. Peters, J.E. Reynolds, S. Gulkis, R.A. Preston, D.D. Morabito, A.K. Tzioumis, J.J. Condon, D.F. Malin, G.D. Nicolson, A. Nothnagel, A.N. Argue and A. Stolz</b>	487
Double Stars In The Astrographic Catalogue <b>C.E. Worley</b>	491
Optical Determination In The Positions Of Radio Stars <b>X. Tong-qi, L. Pei-zhen, C. Zong-yuan and W. Shu-he</b>	497
Comparison Of The Effect Of Various Solar System Ephemerides On Equator And Equinox Solutions From Six-inch Transit Circle Observations Of The Sun <b>Z.-G. Yao and C. Smith</b>	501
Subject Index	505