

Liouville chains: new hybrid vortex equilibria of the two-dimensional Euler equation

Vikas S. Krishnamurthy^{1,†}, Miles H. Wheeler², Darren G. Crowdy³ and Adrian Constantin¹

¹Faculty of Mathematics, University of Vienna, Oskar-Morgenstern-Platz 1, 1090 Vienna, Austria

²Department of Mathematical Sciences, University of Bath, Bath BA2 7AY, UK

³Department of Mathematics, Imperial College London, 180 Queen's Gate, London SW7 2AZ, UK

(Received 20 October 2020; revised 25 January 2021; accepted 24 March 2021)

A large class of new exact solutions to the steady, incompressible Euler equation on the plane is presented. These hybrid solutions consist of a set of stationary point vortices embedded in a background sea of Liouville-type vorticity that is exponentially related to the stream function. The input to the construction is a ‘pure’ point vortex equilibrium in a background irrotational flow. Pure point vortex equilibria also appear as a parameter A in the hybrid solutions approaches the limits $A \rightarrow 0, \infty$. While $A \rightarrow 0$ reproduces the input equilibrium, $A \rightarrow \infty$ produces a new pure point vortex equilibrium. We refer to the family of hybrid equilibria continuously parametrised by A as a ‘Liouville link’. In some cases, the emergent point vortex equilibrium as $A \rightarrow \infty$ can itself be the input for a second family of hybrid equilibria linking, in a limit, to yet another pure point vortex equilibrium. In this way, Liouville links together form a ‘Liouville chain’. We discuss several examples of Liouville chains and demonstrate that they can have a finite or an infinite number of links. We show here that the class of hybrid solutions found by Crowdy (*Phys. Fluids*, vol. 15, 2003, pp. 3710–3717) and by Krishnamurthy *et al.* (*J. Fluid Mech.*, vol. 874, 2019, R1) form the first two links in one such infinite chain. We also show that the stationary point vortex equilibria recently studied by Krishnamurthy *et al.* (*Proc. R. Soc. A*, vol. 476, 2020, 20200310) can be interpreted as the limits of a Liouville link. Our results point to a rich theoretical structure underlying this class of equilibria of the two-dimensional Euler equation.

Key words: vortex dynamics, vortex interactions, general fluid mechanics

1. Introduction

A selection of exact solutions to the Navier–Stokes equation has been provided by Drazin & Riley (2006). Discussing the meaning of exact solutions, they observe that ‘it often

† Email address for correspondence: vikas.krishnamurthy2@gmail.com

denotes a solution which has a simple explicit form, usually an expression in finite terms of elementary or other well-known special functions'. This statement also applies to the Euler equation, the inviscid version of the Navier–Stokes equation. In this paper, we present highly non-trivial exact vortex solutions of the steady Euler equation, but simply given in terms of rational functions.

The foundations of vortex dynamics were laid by Helmholtz (1858), and since then, various exact vortex solutions of the Euler equation have been described. The importance of cataloguing such solutions, and their applicability, is discussed in Saffman (1981). Many of the basic solutions are found in the classic textbooks of fluid dynamics (Saffman 1992; Lamb 1993). Examples of inviscid vortices in two dimensions include point vortices and finite-area vortices such as the Rankine vortex, the Kirchhoff ellipse and the Lamb vortices. Kirchhoff vortices are connected to Gerstner's famous wave solutions and other explicit solutions in Lagrangian coordinates (Abrashkin & Yakubovich 1984).

Point vortex configurations, in which the vortices are stationary with respect to each other, are called relative equilibria or vortex crystals. Stationary equilibria are a subset in which all the vortices are at complete rest. The most basic point vortex equilibrium is an isolated point vortex that remains stationary. A vortex pair either translates or rotates uniformly depending on whether or not the total vortex circulation is zero. For $M \geq 3$ vortices, only a subset of possible motions are relative equilibria (Newton 2001), many of which remain to be described, even for small M (O'Neil 1987). See Aref *et al.* (2003) for a review of relative equilibria.

The notion of 'hybrid vortex equilibria', in which two or more basic vortex models are taken to exist together in equilibrium, has been the topic of extensive study in recent years. Crowdy (1999) found a class of analytical solutions in which a vortex patch exists in equilibrium with a finite distribution of point vortices. His construction was based on posing the stream function in the form of a so-called modified Schwarz potential, an idea that has proven to be fruitful in generating large classes of equilibria, which includes solutions involving multiple patches (Crowdy 2002; Crowdy & Marshall 2005). In a similar vein, O'Neil (2018a,b) has found solutions whereby a vortex sheet sits in equilibrium with an array of point vortices, a construction that also appears to yield many new equilibrium solutions.

The vortex solutions discussed above have compact regions of vorticity surrounded by irrotational flow. They are of particular interest owing to the well-known presence of coherent structures in a variety of high-Reynolds-number flows. In the context of his studies on mixing layers, Stuart (1967) considered steady solutions to the planar Euler equation in which the flow is everywhere rotational. The vorticity ζ is taken to be the exponential of the stream function ψ , i.e. $\zeta = -a \exp(b\psi)$, where a and b are real constants. The resulting differential equation

$$\nabla^2 \psi = a \exp(b\psi) \tag{1.1}$$

is the semi-linear Liouville partial differential equation for the stream function. The general solution of the Liouville equation can be written explicitly in terms of a complex-analytic function $h(z)$ with isolated simple pole singularities (Crowdy 1997) and is given by

$$\psi(z, \bar{z}) = \frac{1}{b} \log \left[\frac{2|h'(z)|^2}{-ab(1 + |h(z)|^2)^2} \right], \quad ab < 0, \tag{1.2}$$

where the two-dimensional (2-D) fluid flow is taken to be in the complex z -plane, primes denote derivatives with respect to the argument, overbar denotes a complex conjugate and

$|\cdot|$ denotes the modulus of a complex number. Stuart (1967) explored some solutions of the Liouville equation (1.1) and identified a particular class, which has become known in the fluid dynamics community as Stuart vortices (Saffman 1992).

Stuart vortices are closely related to solutions with compact vorticity surrounded by irrotational flow; indeed Stuart (1967) shows that his solutions can be continuously varied from a tanh velocity profile, through Stuart vortices, to a limiting case of a point vortex row in an otherwise irrotational flow. It must be noted that, in the non-limiting case, Stuart vortices are everywhere smooth solutions of the Euler equation and exhibit the famous Kelvin's cat's eye streamline patterns.

A natural question then arises: Can a set of point vortices be superimposed on a smooth background Stuart-type vorticity field to produce hybrid equilibria which are steady solutions of the Euler equation? Crowdy (2003) first proposed an extension of Stuart's model to the case of hybrid vortex equilibria in which a steady point vortex exists in a smooth ambient background field of non-zero vorticity. For an integer $N \geq 2$, he found a class of N -fold symmetric solutions for a central point vortex surrounded by a continuous non-zero distribution of Stuart-type vorticity – or what we will call henceforth, in view of the connection to (1.1), 'Liouville-type' vorticity – having N vortices with smoothly distributed (i.e. non-singular) vorticity. Considering a certain limit of the solutions, he showed that they reduce to an axisymmetric flow with a single point vortex at the origin. He further showed that, in another limit, the solutions become the N -fold symmetric pure point vortex equilibria studied earlier by Morikawa & Swenson (1971), which comprise N point vortices in a polygonal arrangement with a central point vortex present at the origin.

Since the work by Crowdy (2003), hybrid solutions containing point vortices embedded in a Liouville-type background have been developed in various directions. The planar solutions of Crowdy (2003) were later rediscovered by Tur & Yanovsky (2004), also see Tur, Yanovsky & Kulik (2011). Generalising the planar Stuart vortices to the case of a non-rotating sphere, Crowdy (2004) found analytical solutions for everywhere smooth vorticity on the surface of a sphere except for point vortices at the north and south poles. These ideas can be extended to obtain Stuart vortex solutions on a torus (Sakajo 2019) and on a hyperbolic sphere (Yoon, Yim & Kim 2020). The introduction in Krishnamurthy *et al.* (2019) discusses other applications and extensions of Stuart vortices.

The above-mentioned studies of hybrid equilibria contain either a single point vortex in the plane or two point vortices on compact surfaces. In these cases, invoking symmetry arguments is sufficient to ensure that the point vortices are stationary, and the solutions obtained are therefore steady. In a recent paper, Krishnamurthy *et al.* (2019) showed the existence of an asymmetric family of hybrid vortex equilibria (although the background field is referred to there as 'Stuart-type' vorticity in deference to Stuart 1967). They showed that a colinear three point vortex equilibrium, which is a limiting case of the $N = 2$ hybrid equilibrium discussed in Crowdy (2003), can be continuously deformed into another non-trivial family of hybrid equilibria comprising a point vortex pair in equilibrium in an ambient field of Liouville-type vorticity. A certain limit of these hybrid equilibria produce another pure point vortex equilibrium in which the point vortex pair sit in equilibrium with eight other point vortices of opposite-signed circulation.

We now briefly mention some relevant connections between pure point vortex equilibria and areas of mathematical physics. The interested reader may consult Aref (2007*a,b*, 2011) and Clarkson (2009) for a general discussion. Burchnell & Chaundy (1930) related the question of finding rational anti-derivatives of rational functions to the existence of polynomial solutions to a certain 'bilinear differential equation' and constructed a Wronskian representation for the polynomials. These polynomials, called Adler–Moser polynomials, also arose in the context of describing rational solutions

to the Korteweg–de Vries equation (Airault, McKean & Moser 1977). They were constructed using iterated Darboux–Crum transformations of Schrödinger operators by Adler & Moser (1978).

The bilinear differential equation is called Tkachenko’s equation in the vortex dynamics literature (Aref *et al.* 2003). Bartman (1984) showed that point vortices of the same circulation but mixed sign, located at the roots of the Adler–Moser polynomials, are in stationary equilibrium. Point vortices with circulation ratios of -2 and $-1/2$ can also be in stationary equilibrium if they are located at the roots of polynomials in two new hierarchies found by Loutsenko (2004), who studied a generalisation of the underlying bilinear differential equation. For a more detailed discussion of these matters, the reader is referred to Krishnamurthy *et al.* (2020). A new transformation is introduced there that takes a given stationary point vortex equilibrium and produces a new stationary point vortex equilibrium. This presents a unified approach to obtain both the Adler–Moser polynomials and the Loutsenko polynomials using this new transformation. Loutsenko (2004) has a different approach to producing these polynomials. We mention a few additional related papers: O’Neil (2006) studies continuous families of point vortex equilibria, Demina & Kudryashov (2012) consider polynomial solutions of the Tkachenko equation different from Adler–Moser polynomials and O’Neil & Cox-Steib (2014) study equilibria of point vortices with three different circulation ratios. This prior work deploys different methods based on consideration of second-order ordinary differential equations and the use of a ‘reduction of order’ method.

In the present paper, we consider solutions of the Liouville-type equation

$$\nabla^2\psi = a \exp(b\psi) - \sum_{j=1}^{\tilde{M}} \tilde{\Gamma}_j \delta(z - \tilde{z}_j), \tag{1.3}$$

where, in addition to the Liouville-type background vorticity, there are \tilde{M} point vortices located at \tilde{z}_j and with circulations $\tilde{\Gamma}_j$. The point vortices are stationary if, and only if, the local expansions of the 2-D fluid velocity field (u, v) are of the form

$$u - iv = 2i \frac{\partial\psi}{\partial z} = \frac{1}{2\pi i} \frac{\tilde{\Gamma}_k}{z - \tilde{z}_k} + O(|z - \tilde{z}_k|), \tag{1.4}$$

for $k = 1, 2, \dots, \tilde{M}$. Away from the point vortices, (1.3) is still solved by (1.2), but it is necessary that the point vortices are stationary to obtain steady solutions of the 2-D Euler equation. When multiple point vortices are present in the flow, non-trivial arguments are needed to show that they are all stationary.

The hybrid solutions of Crowdy (2003) correspond to $\tilde{M} = 1$ in (1.3) and invoking symmetry is sufficient to satisfy (1.4). The family studied by Krishnamurthy *et al.* (2019) corresponds to the case $\tilde{M} = 2$. These families of hybrid equilibria and their point vortex limits signal the possibility that certain point vortex equilibria can be ‘connected’ by families of hybrid equilibria. A key contribution of the present paper is to show the existence of a remarkably broad class of hybrid equilibria, which include chains of hybrid solutions extrapolating between pure point vortex equilibria. We refer to these as ‘Liouville chains’ because the extrapolating hybrid solutions – which we think of metaphorically as connected ‘Liouville links’ in a chain – involve an exponential vorticity-stream function relation of Liouville-type *viz.* (1.3). Figure 1 shows a schematic of a Liouville chain, which can be finite or infinite in length. A mathematical ‘twist’ is needed at a point vortex equilibrium connecting the links in the chain to continue on to the next link; this is encoded

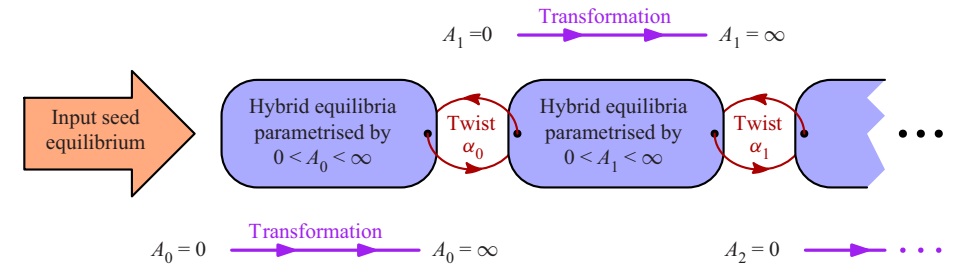


Figure 1. Schematic of a ‘Liouville chain.’ A chain begins with a simple ‘seed’ equilibrium, such as a single isolated point vortex, in an otherwise irrotational flow. Each link of the chain, called a ‘Liouville link’, is a continuum of hybrid equilibria parametrised by some $A_n > 0$ ($n \geq 0$). The points where links connect, corresponding to $A_n = \infty$ and $A_{n+1} = 0$, are pure point vortex equilibria (i.e. in an irrotational background). There also exists a transformation, introduced in Krishnamurthy *et al.* (2020), that allows jumping directly between the pure point vortex equilibria at the end points of a Liouville link, without having to ‘pass through’ the intermediate hybrid equilibria. A ‘twist’, quantified by a ‘twist parameter’ α_n in our construction, is needed at each pure point vortex equilibrium to build the next link in the chain or to jump to the next end point in the chain. We present examples of single-link (§ 7), N -link (§ 8) and infinite (§ 9) Liouville chains in this paper. A detailed worked example is presented in § 4.

in a ‘twist parameter’ α . In our chain metaphor, we call this mathematical operation a ‘twist’ in analogy with the fact, as shown schematically in figure 1, that neighbouring links in a chain have to be rotated (‘twisted’) to properly fit together.

We study three infinite Liouville chains in this paper. One of the infinite Liouville chains unveiled here has mathematical connections with the Adler–Moser polynomials (Adler & Moser 1978) discussed earlier. The two different polynomial hierarchies described by Loutsenko (2004), in connection with his studies on the equilibria of Coulomb gases, are also shown to have associated infinite Liouville chains of hybrid equilibria. While it is well-known that the Adler–Moser polynomials have a connection to point vortex dynamics (Aref *et al.* 2003; Clarkson 2009), this paper shows for the first time that they can be used to represent much more complex hybrid vortical equilibria involving a distributed vorticity of Liouville-type. The families of hybrid equilibria studied by Crowdy (2003) and Krishnamurthy *et al.* (2019) are just two Liouville links in one of the examples studied here, namely, the infinite Liouville chain given in terms of the first hierarchy of Loutsenko polynomials.

This paper is organised as follows. In § 2, we recall in detail point vortices, Stuart vortices (Stuart 1967) and the polygonal solutions of Crowdy (2003). Mathematical statements of the main results obtained in this paper are given in § 3. A detailed example describing the construction procedure for a Liouville chain is given in § 4. The general theory and justification for the results stated in § 3 are provided in §§ 5 and 6. Many examples of the theory are presented in the subsequent sections: examples of single-link Liouville chains are given in § 7, N -link Liouville chains in § 8 and infinite Liouville chains in § 9. We summarise and discuss possible future directions in § 10.

2. Background theory and examples

We consider the 2-D flow of an incompressible, inviscid and homogeneous fluid. The incompressibility condition allows us to introduce the stream function ψ , up to an additive

constant, by

$$u = \frac{\partial \psi}{\partial y} \quad \text{and} \quad v = -\frac{\partial \psi}{\partial x}. \tag{2.1a,b}$$

Here (x, y) are the Cartesian coordinates of a planar cross-section of the flow and (u, v) are the components of the fluid velocity. The vorticity has a single non-zero component

$$\zeta = \frac{\partial v}{\partial x} - \frac{\partial u}{\partial y} = -\nabla^2 \psi, \tag{2.2}$$

where $\nabla^2 = \partial^2/\partial x^2 + \partial^2/\partial y^2$ is the planar Laplacian operator.

The vorticity equation written in terms of the stream function is then (Saffman 1992; Newton 2001)

$$\frac{\partial(\nabla^2 \psi)}{\partial t} + \frac{\partial \psi}{\partial y} \frac{\partial(\nabla^2 \psi)}{\partial x} - \frac{\partial \psi}{\partial x} \frac{\partial(\nabla^2 \psi)}{\partial y} = 0. \tag{2.3}$$

It can be checked that any smooth stream function ψ satisfying an equation of the form

$$\nabla^2 \psi = V(\psi) \tag{2.4}$$

is a steady solution of (2.3) with vorticity $\zeta = -V(\psi)$. Here $V(\psi)$ is any differentiable function.

It is convenient to work in the complex flow plane $z = x + iy$, which can be related to the Cartesian plane via the formal change of variables $(x, y) \mapsto (z, \bar{z})$. Here $\bar{z} = x - iy$ and overbars denote complex conjugation.

2.1. Point vortices

Point vortices have a vorticity distribution of the form (Newton 2001)

$$\zeta = -\nabla^2 \psi = \sum_{j=1}^M \Gamma_j \delta(z - z_j), \tag{2.5}$$

where $z_j = x_j + iy_j$ are the time-dependent locations of the point vortices and the constants Γ_j are the circulations or strengths of the point vortices. The corresponding stream function is

$$\psi(z, \bar{z}) = -\frac{1}{2\pi} \sum_{j=1}^M \Gamma_j \log |z - z_j|, \tag{2.6}$$

which is the imaginary part of the complex potential

$$f(z) = \frac{1}{2\pi i} \sum_{j=1}^M \Gamma_j \log(z - z_j). \tag{2.7}$$

The velocity field arising from the point vortices is the derivative of the complex potential

$$u - iv = f'(z) = \frac{1}{2\pi i} \sum_{j=1}^M \frac{\Gamma_j}{z - z_j}. \tag{2.8}$$

The complex potential (2.7) and the complex velocity (2.8) are complex-analytic functions of z . The velocity of a point vortex is obtained from (2.8) after subtracting off the singular

term and evaluating at the point vortex location

$$\overline{\frac{dz_k}{dt}} = \left[(u - iv) - \frac{\Gamma_k}{2\pi i} \frac{1}{z - z_k} \right] \Big|_{z=z_k} = \frac{1}{2\pi i} \sum_{\substack{j=1 \\ j \neq k}}^M \frac{\Gamma_j}{z_k - z_j}, \quad (2.9)$$

for $k = 1, 2, \dots, M$ (Saffman 1992; Newton 2001; Llewellyn Smith 2011).

In this paper, we study stationary configurations of point vortices in which all vortex velocities are zero. Then (2.9) reduces to the M algebraic conditions on the M unknown vortex positions z_1, \dots, z_M as

$$\sum_{\substack{j=1 \\ j \neq k}}^M \frac{\Gamma_j}{z_k - z_j} = 0 \quad \text{for } k = 1, 2, \dots, M, \quad (2.10)$$

for given values of the circulations $\Gamma_1, \dots, \Gamma_M$. For further discussion of point vortex equilibria, see Krishnamurthy *et al.* (2020) and the review article Aref *et al.* (2003).

2.2. Stuart vortices

Stuart (1967) considered steady solutions by choosing $V(\psi) = \exp(-2\psi)$ in (2.4). In this case, we get the Liouville equation (1.1) with $a = 1$ and $b = -2$, the general solution of which is given by (1.2). Then, in our present notation, Stuart's original solution is obtained by substituting

$$h(z) = A \tan\left(\frac{z}{2}\right) \implies h'(z) = \frac{A}{2} \sec^2\left(\frac{z}{2}\right) \quad (2.11)$$

in (1.2), where A is a real constant. Subtracting an unimportant constant leads to the stream function

$$\psi(z, \bar{z}; A) = \log \left[\frac{1}{A} \left| \cos^2\left(\frac{z}{2}\right) \right| + A \left| \sin^2\left(\frac{z}{2}\right) \right| \right], \quad (2.12)$$

which is smooth for all finite values of A owing to the fact that $h'(z)$ does not vanish anywhere in the complex plane.

By taking appropriate limits as $A \rightarrow 0, \infty$ in (2.12), we find

$$\lim_{A \rightarrow 0} [\psi + \log A] = 2 \log \left| \cos\left(\frac{z}{2}\right) \right|, \quad (2.13a)$$

$$\lim_{A \rightarrow \infty} [\psi - \log A] = 2 \log \left| \sin\left(\frac{z}{2}\right) \right|. \quad (2.13b)$$

These limiting stream functions are the imaginary parts of the complex potentials

$$G(z) = 2i \log \cos\left(\frac{z}{2}\right) \quad \text{and} \quad F(z) = 2i \log \sin\left(\frac{z}{2}\right). \quad (2.14a,b)$$

Both the complex potentials $G(z)$ and $F(z)$ correspond to an infinite row of point vortices with circulations -4π each and consecutive vortices separated by a distance 2π (Saffman 1992). Figure 2 shows streamline plots for the Stuart vortices and their limiting cases.

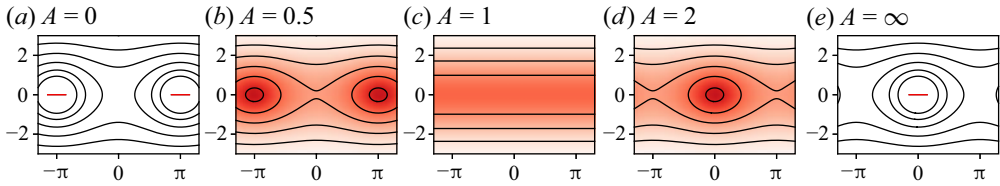


Figure 2. Streamlines and vorticity for Stuart vortices (Stuart 1967) given by the stream function (2.12). Panels with a white background show streamline patterns for point vortices with negative (–, red) circulation in an otherwise irrotational flow. Panels (b–c) show the everywhere rotational and smooth flow for finite $A \neq 0$. In the limiting cases $A = 0, \infty$, the smooth vorticity concentrates into a periodic row of point vortices with complex potentials (2.14a,b), surrounded by irrotational flow.

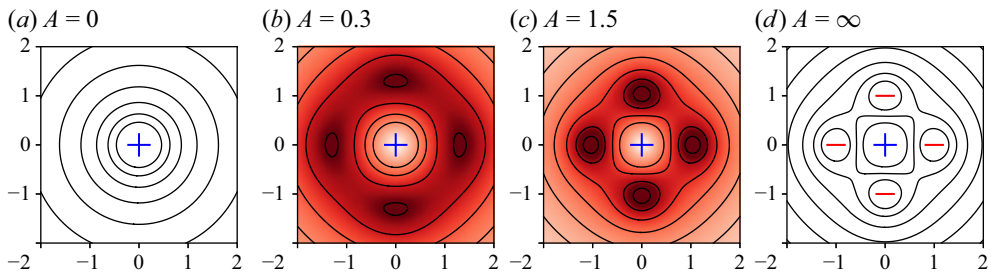


Figure 3. Panels with a white background show streamline patterns for point vortices with positive (+, blue) and negative (–, red) circulation in an otherwise irrotational flow. Panels (b) and (c) show point vortices embedded in a sea of smooth Liouville-type background vorticity, which is negative and shaded in red. Streamlines and vorticity are shown for the N -polygonal equilibria (Crowdy 2003) given by the stream function (2.16). The limit $A \rightarrow 0$ is an isolated point vortex, whereas the limit $A \rightarrow \infty$ is a centred polygon of stationary point vortices. Both of these limiting equilibria contain point vortices in an otherwise irrotational flow.

2.3. Polygonal N -vortex equilibria

Stuart (1967) made the choice (2.11) because he was interested in obtaining everywhere smooth solutions, i.e. without point vortex singularities. Crowdy (2003) instead considered the function (rewritten in our notation)

$$h(z) = A(z^N + C) \implies h'(z) = ANz^{N-1}, \tag{2.15}$$

for integers $N \geq 2$, and where A is a real constant and C is a complex constant. Substituting (2.15) into (1.2), again with $a = 1$ and $b = -2$, we get the stream function

$$\psi(z, \bar{z}; A, C) = \log \left[\frac{1}{A} \frac{1}{|z|^{N-1}} + A \frac{|z^N + C|^2}{|z|^{N-1}} \right], \tag{2.16}$$

where we have dropped an unimportant constant $\log N$. The hybrid stream function (2.16) shows a point vortex singularity at $z_1 = 0$ with strength $\Gamma_1 = 2\pi(N - 1)/2$. The point vortex at the origin is surrounded by N smooth vortices arranged on a regular polygon, as shown in figure 3 for the case $N = 4$. The symmetry of the solution guarantees that the point vortex at the origin in the hybrid solution (2.16) remains stationary according to (1.4).

Just as was done for (2.12), it is useful to look at the two limits $A \rightarrow 0$ and $A \rightarrow \infty$ of (2.16). We find

$$\lim_{A \rightarrow 0} [\psi + \log A] = -\log |z|^{N-1}, \tag{2.17a}$$

$$\lim_{A \rightarrow \infty} [\psi - \log A] = -\log \frac{|z|^{N-1}}{|z^N + C|^2}. \tag{2.17b}$$

We emphasize that while the stream function (2.16) is not harmonic for $0 < A < \infty$, both the limits in (2.17) are harmonic except at a finite set of point vortices. Indeed, the limits are the imaginary parts of the respective complex potentials

$$G(z) = \frac{\Gamma_1}{2\pi i} \log z \quad \text{and} \quad F(z; C) = \frac{\Gamma_1}{2\pi i} \log z + 2i \log(z^N + C). \tag{2.18a,b}$$

In the $A \rightarrow 0$ limit we thus recover a single pure point vortex flow (strength Γ_1), but in the $A \rightarrow \infty$ limit we recover the centred-polygon pure point vortex equilibria studied by Morikawa & Swenson (1971). The stationary polygon consists of a central point vortex with strength Γ_1 surrounded by N satellite point vortices with strengths -4π . It is interesting that, in contrast to the identical point vortex limits (up to a translation) of the Stuart vortex solutions (2.12) as $A \rightarrow 0, \infty$, the polygonal solutions (2.16) have distinct pure point vortex limits.

3. Statement of results: Liouville links and chains

Without any loss of generality, we henceforth set $a = 1/(4\pi)$ and $b = -8\pi$, so that $ab = -2$ in (1.2). Next, we write

$$h'(z) = Ag'(z) \quad \text{and} \quad h(z) = A(g(z) + C), \tag{3.1a,b}$$

where $g(z)$ is a primitive of $g'(z)$. Here we have introduced the complex-analytic function $g'(z)$, the scaling parameter $A > 0$ and the complex-valued integration constant C . We will call $g'(z)$ the input equilibrium function and A the hybrid parameter; these play an important role in the development. Substituting (3.1a,b) into (1.2) we obtain

$$\psi(z, \bar{z}; A, C) = -\frac{1}{4\pi} \log \left[\frac{A|g'(z)|}{1 + A^2|g(z) + C|^2} \right], \tag{3.2}$$

which we call the hybrid stream function.

Consider a given stationary point vortex equilibrium of M point vortices located at z_j , whose circulations Γ_j belong to the set

$$\Gamma_j = -1, \frac{1}{2}, 1, \frac{3}{2}, 2, \dots, \tag{3.3}$$

for $j = 1, \dots, M$. From these given point vortex locations and circulations, we form the input equilibrium function

$$g'(z) = \prod_{j=1}^M (z - z_j)^{2\Gamma_j}. \tag{3.4}$$

Further, we identify the subset of \tilde{M} positive point vortices in (3.4), located at \tilde{z}_j with circulations $\tilde{\Gamma}_j$. The first main result of this paper is that the hybrid stream function (3.2) given in terms of the input equilibrium function (3.4) solves the Liouville-type equation

(1.3) and provides a steady solution of the 2-D incompressible Euler equation. The \tilde{M} positive point vortices in (3.4) remain stationary point vortices in (3.2), satisfying the condition (1.4), whereas the negative point vortices in (3.4) are smoothed out into the background sea of Liouville-type vorticity. We refer to the family of hybrid equilibria (3.2) as a Liouville link.

The second main result of this paper is that the hybrid stream function (3.2) interpolates, as a continuous function of the hybrid parameter, between two distinct pure point vortex equilibria, i.e. point vortex equilibria with no background vorticity. These two pure point vortex equilibria have the complex potentials

$$G(z) = \frac{1}{4\pi i} \log g'(z) \quad \text{and} \quad F(z; C) = \frac{1}{4\pi i} \log \left[\frac{g'(z)}{(g(z) + C)^2} \right] \quad (3.5a,b)$$

whose imaginary parts are obtained from $\psi(z, \bar{z}; A, C)$ viz. (3.2) in the respective limits $A \rightarrow 0$ and $A \rightarrow \infty$.

The third main result of this paper is that two distinct Liouville links can be sequentially joined together to form a Liouville chain after performing a twist operation at one end of a Liouville link. Mathematically, a twist operation is defined as scaling the circulations of the point vortex equilibrium at an end point of the Liouville link, usually the $A \rightarrow \infty$ limit, by some twist parameter α . Liouville chains can be single-link, N -links or infinite-links in length. Every Liouville link in the chain is an exact solution of the Euler equation given in terms of the iterated hybrid stream function (for $n \geq 0$)

$$\psi_n(z, \bar{z}; A_n, C_n) = -\frac{1}{4\pi} \log \left[\frac{A_n |g'_n(z)|}{1 + A_n^2 |g_n(z) + C_n|^2} \right]. \quad (3.6)$$

The hybrid stream function ψ_n of the n th link in the chain depends on one real hybrid parameter $0 < A_n < \infty$ and $n + 1$ complex parameters represented by $C_n = (C_0, \dots, C_n)$. Pure point vortex equilibria exist at the end points of every link in the chain and are obtained as limiting cases of (3.6) as $A_n \rightarrow 0, \infty$.

In contrast to previous work (Stuart 1967; Crowdy 2003) where a choice for the function $g(z)$ is made, in (3.4) we instead choose its derivative $g'(z)$ in terms of a known stationary point vortex equilibrium satisfying (3.3). This immediately leads to the question of the existence of a suitable primitive $g(z)$ of $g'(z)$, and seemingly introduces additional complications. In the first place, the velocity field corresponding to the stream function (3.2) must be a well-defined, single-valued function so that the stream function represents an actual solution of the 2-D Euler equation. This is in addition to the requirement that the point vortices are stationary according to (1.4) to obtain steady solutions. These requirements are non-trivial to satisfy in the absence of any symmetry. Our choice satisfies all the above requirements, as shown in § 5, and moreover allows us to construct large classes of highly asymmetric equilibria.

We can think of the chain of functions g'_0, g'_1, g'_2, \dots as an iterated ‘transformation’ between point vortex equilibria, a point of view examined in detail by the authors elsewhere (Krishnamurthy *et al.* 2020). It was actually the considerations concerning hybrid equilibria – of interest in this paper – that motivated that study.

4. Constructing a Liouville chain: a detailed example

An example of a non-trivial Liouville link was described in Krishnamurthy *et al.* (2019). To illustrate the general theory, here we show that this family is one link in an infinite Liouville chain of hybrid equilibria. The first link in this chain is provided by the special

case $N = 2$ of the N -polygonal equilibria studied by Crowdy (2003), the second link is provided by the equilibria studied by Krishnamurthy *et al.* (2019), and so on. This Liouville chain of hybrid equilibria is given in terms of the polynomials studied by Loutsenko (2004).

4.1. *Input seed and the first Liouville link*

We begin by making a simple choice for the input equilibrium function (3.4),

$$g'(z) = z \implies g(z) = \frac{z^2}{2}, \tag{4.1}$$

which corresponds to a single point vortex ($M = 1$) at $z_1 = 0$ with circulation $\Gamma_1 = 1/2$. This formula for $g'(z)$ is arrived at by considering the complex potential $f(z)$ given by (2.7), for the single point vortex above, and taking $g'(z) = \exp(4\pi i f(z))$. Substituting (4.1) into (3.2), we obtain the hybrid stream function

$$\psi(z, \bar{z}; A, C) = -\frac{1}{4\pi} \log \left[\frac{4A|z|}{4 + A^2|z^2 + 2C|^2} \right], \tag{4.2}$$

where the hybrid parameter A varies in the range $0 < A < \infty$. We have not added in an explicit integration constant C to $g(z)$ in (4.1), this is added separately in (4.2). It is clear that the only singularity in (4.2) is a stationary point vortex of strength $+1/2$ at $z = 0$, which is seen to be stationary owing to a two-fold rotational symmetry of the solution about the origin. For all other values of z , (4.2) solves (1.1). The stream function and the velocity field are both smooth elsewhere, i.e. the point vortex at $z = 0$ is surrounded by everywhere smooth and non-zero Liouville-type vorticity. The hybrid stream function (4.2) is therefore a solution of (1.3) with $\tilde{M} = 1$, $\tilde{z}_1 = 0$ and $\tilde{\Gamma}_1 = 1/2$.

Rewriting (4.2) as

$$\psi(z, \bar{z}; A, C) = +\frac{1}{4\pi} \log \left[\frac{1}{Az} + A \frac{|z^2 + 2C|^2}{4z} \right], \tag{4.3}$$

and taking careful limits as $A \rightarrow 0, \infty$ leads us to the stream functions

$$\lim_{A \rightarrow 0} \left[\psi + \frac{1}{4\pi} \log A \right] = -\frac{1}{4\pi} \log |z|, \tag{4.4a}$$

$$\lim_{A \rightarrow \infty} \left[\psi - \frac{1}{4\pi} \log A \right] = -\frac{1}{4\pi} \log \frac{4|z|}{|z^2 + 2C|^2}. \tag{4.4b}$$

These stream functions are clearly the imaginary parts of the complex potentials

$$G(z) = \frac{1}{4\pi i} \log z \quad \text{and} \quad F(z; C) = \frac{1}{4\pi i} \log \frac{4z}{(z^2 + 2C)^2}. \tag{4.5a,b}$$

The complex potential $G(z)$ corresponds to a single point vortex at z_1 with strength Γ_1 ; we have thus recovered the input point vortex equilibrium in the limit $A \rightarrow 0$. The other limit $A \rightarrow \infty$ yields $F(z; C)$, which corresponds to a colinear three point vortex equilibrium comprising a central point vortex at the origin of circulation $1/2$ and two satellite vortices at $\pm\sqrt{-2C}$ of circulation -1 each. It is a simple matter to check that these three point vortices satisfy (2.10) and are therefore in stationary equilibrium. Note that (4.1) corresponds to the choice for $g(z)$ made by Crowdy (2003) with $N = 2$. The family of hybrid equilibria and its point vortex limits are shown as the first Liouville link in figure 4.

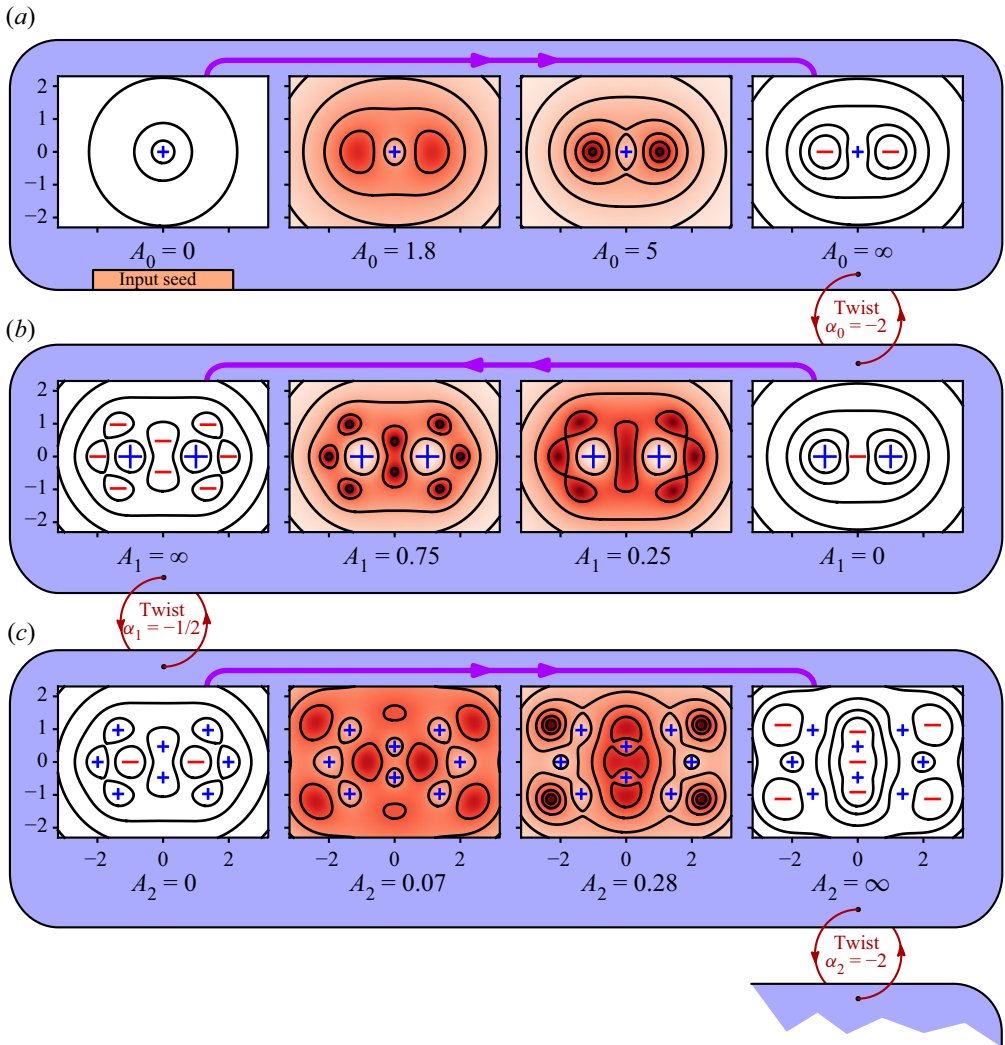


Figure 4. An example of the schematic Liouville chain shown in figure 1. The mathematical details for this example are provided in § 4. We start with a simple input seed equilibrium, an isolated point vortex in an otherwise irrotational flow, with the corresponding $g'_0(z)$ defined by (4.1). For finite $A_0 \neq 0$, the stream function (4.2) is a solution of (1.3) and we refer to this set of hybrid solutions as a Liouville link. In the limiting case $A_0 = 0$ we recover the input seed equilibrium, but for $A_0 = \infty$ we obtain a new pure point vortex equilibrium. After scaling the circulations of the point vortices in this $A_0 = \infty$ equilibrium (we call this a twist operation), we can obtain a new input equilibrium function $g'_1(z)$, which allows us to create a second link in the Liouville chain. The stream function for this second link is given by (4.11). We can keep adding links to the chain indefinitely, which creates a new equilibrium solution with a larger number of vortices at each stage. Every pair of point vortex limits is connected by the transformation (6.7) discussed in Krishnamurthy *et al.* (2020). Here $C_0 = -1/2$, $C_1 = 0$ and $C_2 = 6$.

4.2. The necessity of the twist parameter

A natural question now arises. The above construction started with a known point vortex equilibrium and produced another one. Can the same process be re-initiated with a new input equilibrium function in (3.2), which corresponds to the new point vortex equilibrium

$F(z; C)$ given by (4.5b)? Additionally, will an analogous $A \rightarrow \infty$ limit of this hybrid stream function produce yet another distinct point vortex equilibrium?

Let us relabel the input equilibrium function in (4.1) as g'_0 , whose primitive is now called g_0 . The corresponding family of hybrid equilibria (4.2) gets relabelled as ψ_0 with hybrid parameter A_0 and integration constant C_0 . Finally, we introduce the notation G_0 and F_0 for the complex potentials (4.5a,b).

Instead of the input equilibrium function (4.1), we now reinterpret the equilibrium F_0 as an input, i.e. we choose

$$g'_1(z) = \frac{z}{(z^2/2 + C_0)^2} \implies g_1(z) = -\frac{1}{(z^2/2 + C_0)}, \quad (4.6)$$

which is obtained from (4.5a,b) via the formula $g'_1 = \exp(4\pi i F_0)$. The hybrid stream function follows from substituting (4.6) into (3.2). After some algebra, we get

$$\psi_1(z, \bar{z}; A_1, C_0, C_1) = -\frac{1}{4\pi} \log \left[\frac{4A_1|z|}{|z^2 + 2C_0|^2 + A_1^2|C_1|^2|z^2 + 2(C_0 - 1/C_1)|^2} \right], \quad (4.7)$$

where we have called the new integration constant C_1 and the hybrid parameter A_1 . Note that (4.7) depends on both integration constants C_0 and C_1 . Clearly, the only singularity in (4.7) is a point vortex at $z_1 = 0$ with strength $\Gamma_1 = 1/2$, and it is stationary owing to symmetry. The hybrid stream function (4.7) is therefore a solution of (1.3) with $\tilde{M} = 1$, $\tilde{z}_1 = 0$ and $\tilde{\Gamma}_1 = 1/2$.

Taking limits as $A_1 \rightarrow 0, \infty$ of (4.7), in a similar manner as (4.4), we obtain the complex potentials

$$\tilde{G}_1(z; C_0) = \frac{1}{4\pi i} \log \left[\frac{4z}{(z^2 + 2C_0)^2} \right], \quad (4.8a)$$

$$\tilde{F}_1(z; C_0, C_1) = \frac{1}{4\pi i} \log \left[\frac{1}{C_1^2} \frac{4z}{(z^2 + 2(C_0 - 1/C_1))^2} \right]. \quad (4.8b)$$

It is seen from (4.5b) and (4.8a) that $\tilde{G}_1 = F_0$. Also, \tilde{F}_1 is just a rescaling of \tilde{G}_1 in (4.8). The point vortex limits of the hybrid stream function (4.7) are therefore not distinct. Unfortunately, the choice (4.6) gives nothing new; no new point vortex equilibrium is produced to continue the iteration.

4.3. *Second Liouville link: from three to ten point vortices*

In spite of this apparent setback, progress can still be made, and this is where the idea of a twist, using a twist parameter α , comes in. A trivial but crucial observation is: if $f(z)$ is the complex potential for a stationary point vortex equilibrium then so too is $\alpha f(z)$, for any real α . Suppose we take $\alpha_0 = -2$ and rescale F_0 in (4.5b), i.e. define

$$G_1(z; C_0) = \alpha_0 F_0(z; C_0) = \frac{1}{4\pi i} \log \frac{(z^2 + 2C_0)^4}{z^2}, \quad (4.9)$$

where, for convenience, we have dropped a constant $-(\log 4)/4\pi i$ from the complex potential. The complex potential G_1 is the previous F_0 but now multiplied (we say 'twisted') by $\alpha_0 = -2$. All we have done with this twist parameter α_0 is to rescale the point vortex circulations without changing the state of hydrodynamic equilibrium.

We can now reinitiate the construction, not with the input equilibrium function (4.6), but with the choice of $g'_1 = \exp(4\pi i G_1)$:

$$g'_1(z) = \frac{(z^2 + 2C_0)^4}{z^2}, \tag{4.10a}$$

$$\implies g_1(z) = \frac{z^7}{7} + \frac{8}{5}C_0z^5 + 8C_0^2z^3 + 32C_0^3z - \frac{16C_0^4}{z}. \tag{4.10b}$$

Dropping the constant in (4.9) has meant that both the numerator and denominator polynomials in $g'_1(z)$ are monic. The hybrid stream function (3.2) takes the form

$$\psi_1(z, \bar{z}; A_1, C_0, C_1) = -\frac{1}{4\pi} \log \left[\frac{A_1|z^2 + 2C_0|^4}{|z|^2 + A_1^2|z(g_1(z) + C_1)|^2} \right]. \tag{4.11}$$

For $A_1 > 0$, (4.11) is now a solution of (1.3) in the case of $\tilde{M} = 2$ with $\tilde{z}_1 = -\tilde{z}_2 = \sqrt{-2C_0}$ and $\tilde{\Gamma}_1 = \tilde{\Gamma}_2 = +2$. There are now *two* point vortices embedded in the smooth background sea of Liouville-type vorticity. It is necessary that these point vortices are stationary according to (1.4) to obtain steady solutions. This was directly shown to be true for the stream function (4.11) in Krishnamurthy *et al.* (2019) with $C_0 = -1/2$ (of course, this also follows from the general theory in § 5).

Turning now to the limits $A_1 \rightarrow 0, \infty$ of (4.11), we obtain the complex potentials

$$G_1(z; C_0) = \frac{1}{4\pi i} \log \frac{(z^2 + 2C_0)^4}{z^2}, \tag{4.12a}$$

$$F_1(z; C_0, C_1) = \frac{1}{4\pi i} \log \frac{(z^2 + 2C_0)^4}{(z(g_1(z) + C_1))^2}. \tag{4.12b}$$

We have obtained the input equilibrium G_1 in the $A_1 \rightarrow 0$ limit, but F_1 , obtained in the $A_1 \rightarrow \infty$ limit, is a new pure point vortex equilibrium. Comparing (4.8) and (4.12), we see that the twist operation has resulted in a new point vortex equilibrium given by F_1 in (4.12b). This emergent equilibrium is found to comprise two point vortices located at $\pm\sqrt{-2C_0}$ and of circulations $+2$ each, along with eight point vortices located at the roots of the degree-eight polynomial $z(g_1(z) + C_1)$ and of circulations -1 each. With $C_0 = -1/2$, the functions in (4.10) are essentially those given in (3.8b) and (3.9b) of Krishnamurthy *et al.* (2019), who explore in detail this set of hybrid equilibria for $0 < A_1 < \infty$, which includes the highly non-trivial point vortex equilibrium that emerges in the $A_1 \rightarrow \infty$ limit. This family of hybrid equilibria and its point vortex limits are shown as the second Liouville link in figure 4.

From this explicit example, it should be clear how a function $g'(z)$ associated with a known point vortex equilibrium gives, on substitution into (3.2), a family of hybrid equilibria for any $0 < A < \infty$, called a Liouville link. These hybrid equilibria are bracketed by two point vortex equilibria corresponding to $A = 0$ and $A = \infty$. After a suitable twist operation, a second Liouville link can be added to the first, and the procedure can be iterated to produce a Liouville chain. Figure 4 shows the third Liouville link in this chain. We refer the reader back to figure 1 where this process is depicted schematically. The example discussed in this section can be continued indefinitely to form an infinite Liouville chain, see § 9.2.

Not all Liouville chains can be continued indefinitely. We give examples of single-link Liouville chains in § 7, Liouville chains of finite length in § 8 and two further examples of infinite Liouville chains in § 9.

5. General theory of Liouville links

With our choices of $a = 1/(4\pi)$ and $b = -8\pi$, the stream function (1.2) becomes

$$\psi(z, \bar{z}) = -\frac{1}{8\pi} \log \left[\frac{|h'(z)|^2}{(1 + |h(z)|^2)^2} \right]. \tag{5.1}$$

The relations (2.1a,b) can be combined to obtain the expression $u - iv = 2i (\partial\psi/\partial z)$ for the complex velocity field $u - iv$ in terms of the stream function. On using (5.1) for the stream function, we find that the velocity field associated with the Liouville-type vorticity is, in terms of the analytic function $h(z)$,

$$u - iv = 2i \frac{\partial\psi}{\partial z} = \frac{1}{4\pi i} \left[\frac{h''(z)}{h'(z)} - \frac{2h'(z)\overline{h(z)}}{1 + |h(z)|^2} \right]. \tag{5.2}$$

The hybrid equilibria constructed in this paper are solutions of the Liouville-type equation (1.3). The hybrid vorticity consists of \tilde{M} point vortices, located at \tilde{z}_j and with circulations $\tilde{\Gamma}_j$, embedded in a sea of Liouville-type vorticity. Away from the point vortices, i.e. for $z \neq \tilde{z}_j$, (1.3) is solved by the stream function (1.2). To obtain steady solutions of the Euler equation, it is necessary and sufficient that the point vortices are stationary. This is equivalent to a force-free condition on the point vortices. Similar to (2.9), the velocity of a point vortex embedded in a sea of background vorticity can be obtained by considering the non-self-induced part of the velocity field at the point vortex location. The velocity field $u - iv$ is given in this case by (5.2) and the velocity of a point vortex at \tilde{z}_k , for $k = 1, 2, \dots, \tilde{M}$, is (Llewellyn Smith 2011)

$$\frac{d\tilde{z}_k}{dt} = \left[(u - iv) - \frac{\tilde{\Gamma}_k}{2\pi i} \frac{1}{z - \tilde{z}_k} \right] \Big|_{z=\tilde{z}_k}. \tag{5.3}$$

Then, in order that the point vortex is stationary, we require the local expansion of the velocity field to be without a constant term: it must be of the form (1.4). Note that the leading order term in the regular part of the velocity field in (1.4) is $O(|z - \tilde{z}_k|)$ and not necessarily $O(z - \tilde{z}_k)$ as this is a rotational velocity field.

The central idea of the present paper is to choose the arbitrary function $h(z)$ in the Liouville solution (5.1) in terms of a stationary point vortex equilibrium. More precisely, we choose the function $h'(z)$ as follows. Given M (note that M is different from \tilde{M}) point vortices in stationary equilibrium at locations z_j , with circulations Γ_j , we define the input equilibrium function $g'(z)$ in terms of the point vortex complex potential $f(z)$ viz. (2.7) as

$$g'(z) = [\exp(2\pi i f(z))]^2 = \prod_{j=1}^M (z - z_j)^{2\Gamma_j}. \tag{5.4}$$

This is the general expression for $g'(z)$ given in (3.4). The first observation from (5.4) is that adding a constant to $f(z)$ is equivalent to multiplying $g'(z)$ by a related constant. We therefore introduce a real parameter A and take the function $h'(z)$ – and hence $h(z)$ – to be of the form (3.1a,b),

$$h'(z) = Ag'(z) = A \prod_{j=1}^M (z - z_j)^{2\Gamma_j}. \tag{5.5}$$

We show that if the point vortex circulations belong to the set (3.3), then the rational function $h'(z)$ integrates to another rational function, and hence the resulting velocity field

(5.2) is single-valued. Then, using local expansions in (5.2) near the zeros and poles of $h(z)$ and $h'(z)$, we show that the vorticity is of the form (1.3) and all the point vortices are stationary according to the condition (1.4). Among the M point vortices present in the ‘input’ $h'(z)$, \tilde{M} remain in the hybrid ‘output’ solution; these are the vortices with positive circulation. The rest of the point vortices (with circulations -1) are smoothed out into the background sea of Liouville-type vorticity.

5.1. Proof that $h(z)$ is rational

We begin by showing that restricting the point vortex strengths according to (3.3) leads to a function $h(z)$ that is free of logarithms and hence to a single-valued velocity field (5.2). This proof can also be found in the context of the transformation described in Krishnamurthy *et al.* (2020), but we include it here for completeness. This condition is equivalent to $h'(z)$ having zero residue at each of its poles, which are clearly at point vortex locations z_k with negative circulations $\Gamma_k = -1$. Near any such z_k , we rewrite

$$h'(z) = A \frac{H_k(z)}{(z - z_k)^2}, \tag{5.6}$$

where

$$H_k(z) = \prod_{\substack{j=1 \\ j \neq k}}^M (z - z_j)^{2\Gamma_j} \quad \text{for } k = 1, 2, \dots, M. \tag{5.7}$$

Because the vortex positions are non-overlapping, $H_k(z_k)$ is finite and non-zero. The series representation for $h'(z)$ near z_k is

$$h'(z) = A \left(\frac{H_k(z_k)}{(z - z_k)^2} + \frac{H'_k(z_k)}{(z - z_k)} + \frac{H''_k(z_k)}{2} + \dots \right). \tag{5.8}$$

Hence $h'(z)$ will have zero residue at z_k if, and only if, the coefficient $H'_k(z_k)$ vanishes. Combining (5.7) and (2.10) yields

$$\frac{H'_k(z_k)}{H_k(z_k)} = (\log H_k(z))' \Big|_{z=z_k} = 2 \sum_{\substack{j=1 \\ j \neq k}}^M \frac{\Gamma_j}{z_k - z_j} = 0, \tag{5.9}$$

and hence $H'_k(z_k) = 0$ as desired. Similar arguments show that allowing for $\Gamma_k = -1/2$ in (3.3) would always lead to non-rational $h(z)$. Allowing for larger negative circulations, say $\Gamma_k = -3/2$, would require the corresponding coefficient $H''_k(z_k)$ to vanish, which is not true in general. On the other hand, this can happen in specific examples, for instance the trivial example of a single point vortex.

5.2. Proof that singularities are stationary point vortices

With the choice of (5.5) for $h'(z)$, the stream function is smooth away from the zeros and poles of $h'(z)$ and $h(z)$ and therefore satisfies the modified Liouville equation (1.3). Because $h'(z)$ and $h(z)$ are both rational functions, singularities \tilde{z}_k of the stream function (5.1) can only appear at their roots and poles. It remains to show that at each of these singularities, the velocity field is of the form (1.4) and hence that the stream function satisfies (1.3). We have the following three cases to consider: (a) zeros of $h'(z)$, (b) poles

of $h'(z)$ and (c) zeros of $h(z)$. The poles of $h(z)$ and $h''(z)$ coincide with the poles of $h'(z)$, and so do not need to be checked separately.

Using (5.5), we see that the term

$$\frac{h''(z)}{h'(z)} = (\log h'(z))' = 2 \sum_{j=1}^M \frac{\Gamma_j}{z - z_j} \tag{5.10}$$

is proportional to the pure point vortex velocity field (2.8). Because the point vortices are stationary, from (2.10) we have

$$\frac{h''(z)}{h'(z)} = \frac{2\Gamma_k}{z - z_k} + O(z - z_k) \quad \text{as } z \rightarrow z_k \tag{5.11}$$

near any zero or pole z_k of $h'(z)$.

First consider (a) a zero z_k of $h'(z)$. The second term in (5.2) vanishes at z_k and we have from (5.11)

$$u - iv = \frac{1}{2\pi i} \frac{\Gamma_k}{z - z_k} + O(z - z_k) \quad \text{as } z \rightarrow z_k, \tag{5.12}$$

which corresponds to a stationary point vortex at z_k with circulation $\tilde{\Gamma}_k = \Gamma_k$. Note that the zeros of $h'(z)$ correspond to point vortices with positive circulations Γ_k . Next, considering (b), it was already noted by Crowdy (2003) that a simple-pole term in $h(z)$ leads to a smooth velocity field at the location of the pole. Because from (3.3) the only poles of $h'(z)$ are second-order poles, the only poles of $h(z)$ will be simple poles. Going back to the stream function (5.1), we see that at a simple pole z_k of $h(z)$, the argument of the logarithm has a constant non-zero leading term, and hence the stream function is regular at z_k owing to the structure of the Liouville solution. The same conclusion may also be reached by expanding (5.2) near z_k . It remains to consider (c), of which there are two types, simple and multiple zeros. At a simple zero \hat{z}_k (say) of $h(z)$, the second term in (5.2) vanishes while the first term is regular because $h'(z)$ is regular at \hat{z}_k . The velocity field is therefore regular at a simple zero of $h(z)$. If \hat{z}_j is a multiple zero of $h(z)$, then it must also be a zero of $h'(z)$ and so $\hat{z}_j = z_k$ for some $k = 1, \dots, M$. This case has already been covered in (a) and corresponds to a stationary point vortex at z_k of strength $\tilde{\Gamma}_k = \Gamma_k$.

To summarise: under the restriction (3.3), a rational $h'(z)$, defined by (5.5), leads to a rational $h(z)$. The roots of $h'(z)$, which correspond to the positive circulation point vortices in the input equilibrium function (5.5), are preserved as point vortices at the same locations (renamed as \tilde{z}_k) with their strengths remaining the same. The poles of $h'(z)$, which correspond to point vortices with circulations -1 , become the background sea of smooth Liouville-type vorticity.

If the value of the constant b is chosen to be different from -8π , all elements of the proofs above remain the same except for the strengths $\tilde{\Gamma}_k$, which now scale as $\tilde{\Gamma}_k = (-8\pi/b)\Gamma_k$. Appendix B contains more details.

6. Liouville chains

6.1. Point vortex limits of a Liouville link and a transformation between them

The stream function (3.2) for the Liouville link contains a real parameter A and a complex parameter C . In this section, we are interested in the behaviour of the hybrid stream function in the limits $A \rightarrow 0, \infty$ and show that, in these limits, the rotational solutions approach distinct stationary point vortex equilibria.

Taking $A > 0$ and rearranging the argument of the logarithm in the hybrid stream function (3.2), we obtain

$$\psi(z, \bar{z}; A, C) = +\frac{1}{4\pi} \log \left[\frac{1 + A^2 |g(z) + C|^2}{A |g'(z)|} \right] \tag{6.1a}$$

$$= +\frac{1}{4\pi} \log \left[\frac{1}{A |g'(z)|} + A \frac{|g(z) + C|^2}{|g'(z)|} \right]. \tag{6.1b}$$

Note that we can take $A > 0$ without loss of generality because if A were negative or indeed complex, then $|A| > 0$ would appear in (6.1b) in place of A .

Consider now the limiting case $A \rightarrow 0$. In this case, the second term in the argument of the logarithm drops out and the stream function (6.1b) can be written, after renormalising for the infinite term $-(1/4\pi) \log A$, as

$$\lim_{A \rightarrow 0} \left[\psi(z, \bar{z}; A, C) + \frac{1}{4\pi} \log A \right] = -\frac{1}{4\pi} \log |g'(z)|. \tag{6.2a}$$

Similarly, in the limiting case $A \rightarrow \infty$, we see that the first term in the argument of the logarithm drops out and the stream function (6.1b) can be written, after renormalising for the infinite term $(1/4\pi) \log A$, as

$$\lim_{A \rightarrow \infty} \left[\psi(z, \bar{z}; A, C) - \frac{1}{4\pi} \log A \right] = -\frac{1}{4\pi} \log \frac{|g'(z)|}{|g(z) + C|^2}. \tag{6.2b}$$

The stream functions (6.2a) and (6.2b) are respectively the imaginary parts of the complex potentials

$$G(z) = \frac{1}{4\pi i} \log g'(z) \quad \text{and} \quad F(z; C) = \frac{1}{4\pi i} \log \left[\frac{g'(z)}{(g(z) + C)^2} \right], \tag{6.3a,b}$$

determined by the input equilibrium $g'(z)$. Comparing (6.3a,b) with (5.4), we see that $G(z) = f(z)$ is the complex potential of the stationary point vortex equilibrium with which we started. The complex potential $F(z; C)$ also corresponds to a stationary point vortex equilibrium, distinct from $G(z)$, as explained in the following.

To relate the two different complex potentials $G(z)$ and $F(z)$ defined in (6.3a,b), we first define a new function $\hat{g}'(z)$ via the transformation

$$g'(z) \mapsto \hat{g}'(z) = \hat{E} \left[\frac{g'(z)}{(g(z) + C)^2} \right]^\alpha, \tag{6.4}$$

where α is the twist parameter and \hat{E} is some constant. Krishnamurthy *et al.* (2020) showed that the transformation (6.4) takes a given stationary point vortex equilibrium $g'(z)$ into a new equilibrium $\hat{g}'(z)$ if the point vortex circulations in $g'(z)$ belong to the set (3.3). The primitive of $g'(z)$ is then also a rational function and $\hat{g}'(z)$ *viz.* (6.4) takes the same mathematical form as $g'(z)$ *viz.* (3.4), but with some of the vortex positions and circulations changed. The proof for this assertion is very similar to the proof presented in §§ 5.1 and 5.2, and is detailed in Krishnamurthy *et al.* (2020).

The stationary point vortex equilibria connected by the transformation (6.4) are closely related to the complex potentials $G(z)$ and $F(z; C)$ in (6.3a,b) of stationary point vortex

equilibria that exist at the end points of a Liouville link. Indeed, let us define $\hat{G}(z; C)$ after scaling the circulations in $F(z; C)$ by α , and adding a constant in terms of \hat{E} :

$$\hat{G}(z; C) = \alpha F(z; C) + \frac{1}{4\pi i} \log \hat{E}. \tag{6.5}$$

We can rewrite (6.3a,b) in terms of $\hat{G}(z; C)$ as

$$G(z) = \frac{1}{4\pi i} \log g'(z) \quad \text{and} \quad \hat{G}(z; C) = \frac{1}{4\pi i} \log \hat{g}'(z). \tag{6.6a,b}$$

Thus $G(z) = f(z)$ is the stationary point vortex equilibrium with which we started, defined by $g'(z)$, whereas $\hat{G}(z; C)$ (or $F(z; C)$) is a new stationary point vortex equilibrium defined by $\hat{g}'(z)$, which is given by the transformation (6.4). We emphasize that $\hat{G}(z; C)$ is obtained after scaling all the circulations in the $A \rightarrow \infty$ limit (6.3a,b) of the Liouville link by the twist parameter α . Finally, we note that, by definition, $G(z)$ is independent of C .

6.2. Twist operations and Liouville chains

A brief summary of Liouville links and their limits, which we have discussed so far in §§ 5 and 6.1, is as follows. The input equilibrium function $g'(z)$ in the hybrid stream function (3.2) of the Liouville link can be chosen to be of the form (3.4), which consists of stationary point vortices whose circulations belong to the set (3.3). Then, for any finite value of the parameter A , the Liouville link solution exists. The transformation (6.4) allows us to jump directly between the end points of the Liouville link, which are pure point vortex equilibria. These latter equilibria are recovered as distinct limits of the rotational hybrid solutions, as $A \rightarrow 0, \infty$.

The transformation (6.4) between stationary pure point vortex equilibria can sometimes be iterated to produce hierarchies of pure point vortex equilibria consisting of increasing numbers of point vortices with each iteration (Krishnamurthy *et al.* 2020). It is also possible to have the iteration continue indefinitely. At a given n th stage of the iteration, if $g'_n(z)$ is a stationary point vortex equilibrium of the form (3.4) with the circulations belonging to the set (3.3), then $g_n(z)$ is a rational function and $g'_{n+1}(z)$, defined by the iterated transformation (for some constants E_n)

$$g'_{n+1}(z) = E_{n+1} \left[\frac{g'_n(z)}{(g_n(z) + C_n)^2} \right]^{\alpha_n}, \tag{6.7}$$

is a stationary point vortex equilibrium. A new twist parameter α_n is defined at every stage of the iteration (6.7). If α_n can be chosen so that the circulations in $g'_{n+1}(z)$ also belong to the set (3.3), then the iteration can be continued. Krishnamurthy *et al.* (2020) showed that if we choose at any stage the special value $\alpha_n = 1$, then the resulting equilibrium will simply be a space-shifted version of the equilibrium at the previous stage. They also discussed various classes of stationary point vortex equilibria that can be generated from a ‘seed equilibrium function’ of the form

$$g'_0(z) = z^{2\Gamma} \tag{6.8}$$

with different choices of Γ and α_n . Here, Γ is the circulation of the seed point vortex. In this manner, the Adler–Moser polynomials found by Adler & Moser (1978) and the two polynomial hierarchies discussed by Loutsenko (2004) are all produced from the same

seed (6.8) through the iterated transformation (6.7). The point vortices in equilibrium are at the roots of successive polynomials in these hierarchies.

A Liouville chain is a sequence of Liouville links joined together by applying a twist operation at an end point of each Liouville link. Every link in the Liouville chain is a family of hybrid stream functions, defined by (3.6), and continuously parametrised by $0 < A_n < \infty$. The end points of every Liouville link are pure point vortex equilibria obtained in the limits $A_n \rightarrow 0, \infty$ and have the complex potentials

$$G_n(z) = \frac{1}{4\pi i} \log g'_n(z) \quad \text{and} \quad F_n(z; C_n) = \frac{1}{4\pi i} \log \left[\frac{g'_n(z)}{(g_n(z) + C_n)^2} \right]. \quad (6.9a,b)$$

The twist operation is encoded by the twist parameter α_n , which scales the circulations of all the point vortices at the $A_n \rightarrow \infty$ limit of the Liouville link. The point vortex equilibrium, obtained after scaling the circulations and adding a constant, is used to build the next link in the chain:

$$G_{n+1}(z; C_n) = \alpha_n F_n(z; C_n) + \frac{1}{4\pi i} \log E_{n+1}. \quad (6.10)$$

The stream function at the n th stage will contain $n + 2$ parameters: the real parameter A_n and $n + 1$ complex parameters C_0, \dots, C_n . Every function $g'_n(z)$ in the chain is of the form (3.4) and is obtained via the iterated transformation (6.7). As long as the sequence of rational functions $g'_n(z)$ corresponding to stationary pure point vortex equilibria exists, a corresponding sequence of stream functions given by (3.6) also exists.

7. Single-link Liouville chains

7.1. Liouville link between equilibria with three and eleven point vortices

Consider a stationary equilibrium (O’Neil 2006; Krishnamurthy *et al.* 2020) consisting of three point vortices of strengths 3, 3/2, -1 located at $-2, 1, 0$. The input equilibrium function $g'(z)$ corresponding to this point vortex equilibrium is written from (3.4) as

$$g'(z) = \frac{(z + 2)^6(z - 1)^3}{z^2}. \quad (7.1)$$

Because the point vortex circulations are restricted to the set (3.3), it follows that the primitive of $g'(z)$ must be rational. Indeed, we get after an explicit calculation that

$$g(z) = \frac{z^8}{8} + \frac{9z^7}{7} + \frac{9z^6}{2} + 3z^5 - 18z^4 - 36z^3 + 24z^2 + 144z + \frac{64}{z}. \quad (7.2)$$

Substituting in (3.2) and taking C as an integration constant, we get the hybrid stream function

$$\psi(z, \bar{z}; A, C) = -\frac{1}{4\pi} \log \left[\frac{A|z + 2|^6|z - 1|^3}{|z|^2 + A^2|z(g(z) + C)|^2} \right], \quad (7.3)$$

which defines a Liouville link solution for the range of parameter values $0 < A < \infty$. It is clear from (7.3) that the point vortex at $z = 0$ in (7.1), with circulation -1 , has been smoothed out. The two point vortices at $z = -2$ and $z = 1$ in (7.1) remain embedded in the flow retaining the values of their circulations, are stationary, and are surrounded by an everywhere smooth rotational flow of Liouville-type.

The transformation (6.4) defines the function $\hat{g}'(z)$. Setting $\alpha = 1$, $\hat{E} = 1/64$ in (6.4) and using (7.1), (7.2), we get

$$\hat{g}'(z) = \frac{(z + 2)^6(z - 1)^3}{(8z(g(z) + C))^2}, \tag{7.4}$$

where $8z(g(z) + C)$ is a degree-9 monic polynomial, as seen from (7.2). Comparing the form of $\hat{g}'(z)$ with (3.4), we see that it consists of 11 point vortices: the two positive point vortices at $z = -2$ and $z = 1$ together with nine negative point vortices of strength -1 located at the roots of the polynomial $8z(g(z) + C)$.

In the limits $A \rightarrow 0$ and $A \rightarrow \infty$, the stream function (7.3) becomes the imaginary part of the complex potentials (6.6a,b) with $g'(z)$ and $\hat{g}'(z)$ given by (7.1) and (7.4). To see this, notice that the stream function (7.3) can be re-written as

$$\psi(z, \bar{z}; A, C) = +\frac{1}{4\pi} \log \left[\frac{1}{A} \frac{|z|^2}{|z + 2|^6|z - 1|^3} + A \frac{|z(g(z) + C)|^2}{|z + 2|^6|z - 1|^3} \right], \tag{7.5}$$

which in the limits $A \rightarrow 0, \infty$ becomes

$$\lim_{A \rightarrow 0} \left[\psi + \frac{1}{4\pi} \log A \right] = -\frac{1}{2\pi} \log \left| \frac{(z + 2)^3(z - 1)^{3/2}}{z} \right|, \tag{7.6a}$$

$$\lim_{A \rightarrow \infty} \left[\psi - \frac{1}{4\pi} \log A \right] = -\frac{1}{2\pi} \log \left| \frac{(z + 2)^3(z - 1)^{3/2}}{z(g(z) + C)} \right|. \tag{7.6b}$$

The stream function (7.3) is thus a Liouville link between the three point vortex equilibrium represented by (7.1) and the 11 point vortex equilibrium represented by (7.4). The streamline patterns for this Liouville link are shown in figure 5 for various values of parameters A and C ; the figure also shows the limiting point vortex equilibria.

7.2. Liouville link between equilibria with four and ten point vortices

Figure 6 shows the streamline patterns for the stream function (3.2) with the input equilibrium function (3.4) formed from a four point vortex equilibrium (O’Neil 2006; Krishnamurthy *et al.* 2020)

$$g'(z) = \frac{(z + \sqrt{3} + 3i)^4(z - 2i)^2(z - \sqrt{3})}{z^2}. \tag{7.7}$$

The point vortex strengths in (7.7) satisfy the constraints (3.3) and the rational function $g(z)$ is

$$g(z) = \frac{z^6}{6} + \frac{1}{5}(3\sqrt{3} + 8i)z^5 - (1 - 3\sqrt{3}i)z^4 + 4(2\sqrt{3} + 3i)z^3 - 12(1 - 3\sqrt{3}i)z^2 + 24(\sqrt{3} - 9i)z + \frac{288(\sqrt{3} + 3i)}{z}. \tag{7.8}$$

Setting the twist parameter $\alpha = 1$ along with $\hat{E} = 1/36$, the transformed point vortex equilibrium (6.4) is given by

$$\hat{g}'(z) = \frac{(z + \sqrt{3} + 3i)^4(z - 2i)^2(z - \sqrt{3})}{q^2(z)}, \tag{7.9a}$$

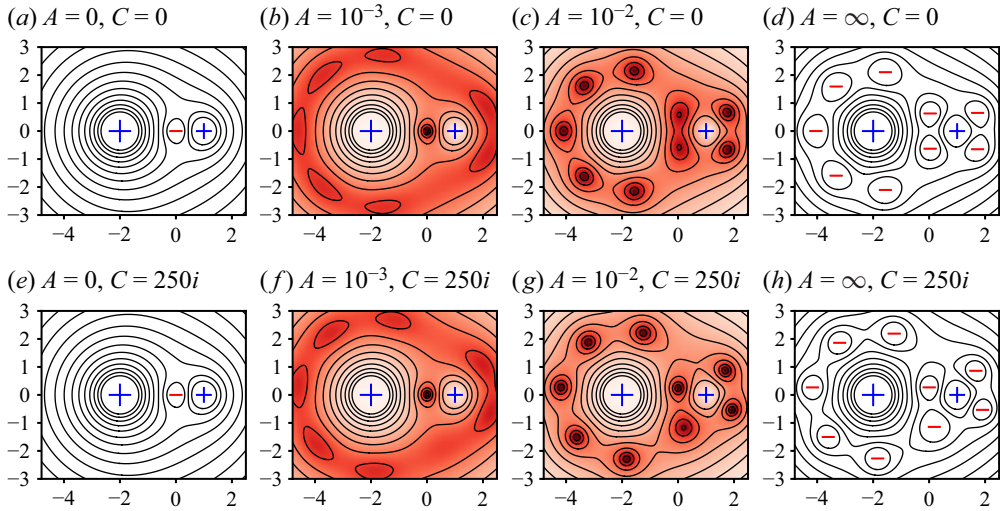


Figure 5. Streamline patterns for the stream function (3.2) with the input equilibrium function (7.1). The Liouville link exists for the range of parameter values $0 < A < \infty$. The formation of the limiting point vortex equilibria (6.6a,b), with $g'(z)$ and $\hat{g}'(z)$ given by (7.1) and (7.4), can be seen as A becomes small and large. This process is shown for two values of C . When $C = 0$, the hybrid solutions are symmetric with respect to the x -axis but when $C = 100 + 180i$ (complex valued), this symmetry is lost. The $A = 0$ limit is independent of C by definition.

where the polynomial $q(z)$ is

$$q(z) = z^7 + \frac{6}{5}(3\sqrt{3} + 8i)z^6 - 6(1 - 3\sqrt{3}i)z^5 + 24(2\sqrt{3} + 3i)z^4 - 72(1 - 3\sqrt{3}i)z^3 + 144(\sqrt{3} - 9i)z^2 + 6Cz + 1728(\sqrt{3} + 3i). \quad (7.9b)$$

The Liouville link shown in figure 6 consists of the three positive point vortices in (7.7) embedded in a background smooth Liouville-type vorticity for the range of parameter values $0 < A < \infty$. The $A \rightarrow 0, \infty$ limits of the Liouville link are pure point vortex equilibria with four and ten point vortices. Their complex potentials are given by (6.6a,b), where $g'(z)$ and $\hat{g}'(z)$ are given by (7.7) and (7.9).

8. N -link Liouville chains

We have identified an interesting set of finite-link Liouville chains that terminate after $N \geq 1$ steps. If we choose the circulations of the seed equilibria (6.8) to be half-integers,

$$\Gamma = \frac{2N - 1}{2} \quad \text{for } N \geq 1, \quad (8.1)$$

then the corresponding input equilibrium functions

$$g'_0(z) = z, z^3, z^5, \dots, \quad (8.2)$$

together with the twist parameters $\alpha_n = -1$ (for $n \geq 1$), produce precisely N -links in the Liouville chain.

Liouville chains of hybrid vortex equilibria

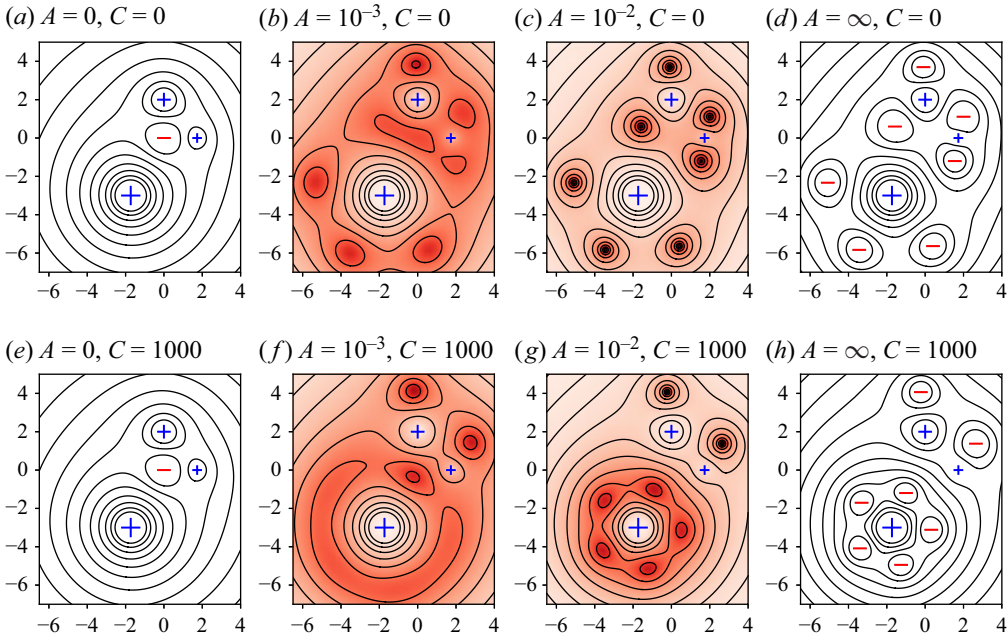


Figure 6. Streamline patterns for the hybrid stream function (3.2) with input equilibrium (7.7). In the limit as $A \rightarrow 0, \infty$, the hybrid solution goes over into the stationary point vortex equilibria given by (6.6a,b), with $g'(z)$ and $\hat{g}'(z)$ as in (7.7) and (7.9). Varying the integration constant C alters the locations of the centres and saddles in the flow.

The rational functions for $N = 1$, produced by the iterated transformation (6.7), are

$$g'_0(z) = z, \quad g'_1(z) = \frac{(z^2 + 2C_0)^2}{z}. \tag{8.3a,b}$$

As in the single-link examples discussed in § 7, the constants E_n are chosen so that $g'_n(z)$ have monic numerator and denominator polynomials (see Appendix B). The rational function $g'_0(z)$ has a rational function primitive $g_0(z)$ because the circulations in $g'_0(z)$ satisfy (3.3). On the other hand, the transformed equilibrium $g'_1(z)$ has a point vortex with circulation $-1/2$ and hence cannot have a rational function primitive. The stream function $\psi_0(z, \bar{z})$ in (3.6) with the input equilibrium function $g'_0(z)$ is therefore a hybrid equilibrium but $\psi_1(z, \bar{z})$ with input equilibrium function $g'_1(z)$ is not. This is a single-link Liouville chain.

The rational functions for $N = 2$ can be obtained from (6.7):

$$\left. \begin{aligned} g'_0(z) &= z^3, \\ g'_1(z) &= \frac{(z^4 + 4C_0)^2}{z^3}, \quad g'_2(z) = \frac{(z^8 + 24C_0z^4 + 6C_1z^2 - 48C_0^2)^2}{z(z^4 + 4C_0)^2}. \end{aligned} \right\} \tag{8.4}$$

As before, $g'_0(z)$ has a rational function primitive and $g'_2(z)$ does not. The rational function $g'_1(z)$ has a single point vortex at the origin whose circulation is a negative half-integer, $-3/2$, while the circulations of its remaining point vortices satisfy (3.3). Nevertheless, it has a rational function primitive $g_1(z)$. The stream functions $\psi_0(z, \bar{z})$ and $\psi_1(z, \bar{z})$ in (3.6) are therefore hybrid equilibria while $\psi_2(z, \bar{z})$ is not. The point vortex at the origin in $g'_1(z)$

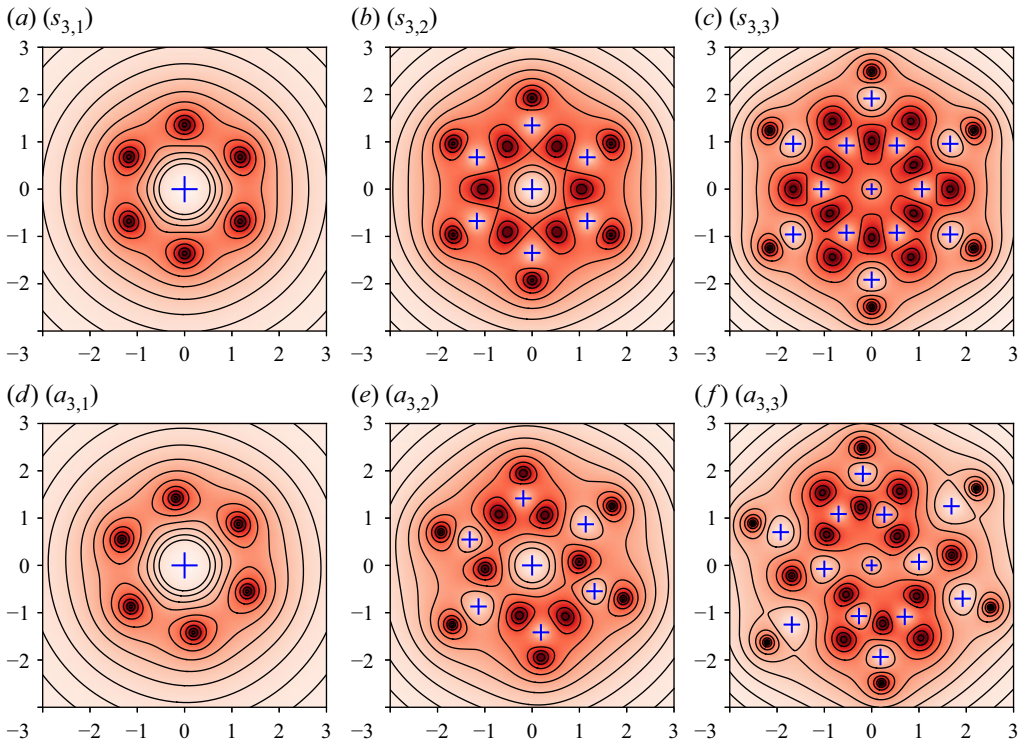


Figure 7. Symmetric ($s_{3,n}$; $a-c$) and asymmetric ($a_{3,n}$; $d-f$) streamline patterns in successive links $n = 0, 1, 2$ of a three-link Liouville chain. The n th link is obtained by substituting the rational function $g'_n(z)$ in (8.5) into the iterated hybrid stream function (3.6). The circulation of the point vortex at the origin is a positive half-integer which progressively decreases until it reaches $+1/2$, at which point the chain ends. The point vortex limits of these hybrid equilibria are shown as (S3) and (A3) in figure 6 of Krishnamurthy *et al.* (2020). See table 1 for the values of A_n and C_n in these plots.

remains a point vortex in the hybrid solution $\psi_1(z, \bar{z})$ but with circulation $+1/2$, as can be checked with a local expansion. This is a two-link Liouville chain.

The rational functions in the case $N = 3$ are

$$\left. \begin{aligned} g'_0(z) &= z^5, & g'_2(z) &= \frac{(z^{12} + 48C_0z^6 + 8C_1z^4 - 72C_0^2)^2}{z^3(z^6 + 6C_0)^2}, \\ g'_1(z) &= \frac{(z^6 + 6C_0)^2}{z^5}, & g'_3(z) &= \frac{q^2(z)}{z(z^{12} + 48C_0z^6 + 8C_1z^4 - 72C_0^2)^2} \end{aligned} \right\} \quad (8.5a)$$

where the numerator $q(z)$ of $g'_3(z)$ is

$$\begin{aligned} p(z) &= z^{18} + 216C_0z^{12} + 80C_1z^{10} + 10C_2z^8 - 4320C_0^2z^6 - 960C_0C_1z^4 \\ &\quad + z^2 \left(60C_0C_2 - \frac{320}{3}C_1^2 \right) - 4320C_0^3. \end{aligned} \quad (8.5b)$$

In this case, $g'_0(z)$, $g'_1(z)$ and $g'_2(z)$ have rational function primitives and $g'_3(z)$ does not. The stream functions $\psi_0(z, \bar{z})$, $\psi_1(z, \bar{z})$ and $\psi_2(z, \bar{z})$, given by (3.6), are hybrid equilibria while $\psi_3(z, \bar{z})$ is not. This is a three-link Liouville chain. The hybrid streamline patterns for the three links are shown in figure 7.

For any $N \geq 1$ in (8.1), the iteration terminates after N steps. At each step, the rational function $g'_n(z)$ is produced by the iterated transformation (6.7) for $n = 1, \dots, N$. It contains a point vortex at the origin whose circulation is a negative half-integer, while the remainder of its circulations satisfy (3.3). Each of these rational functions has a rational function primitive. The circulation of the point vortex at the origin continuously increases by 1 at each step and the iteration terminates when it reaches the forbidden value $-1/2$.

Each rational function $g'_n(z)$, for $n = 1, \dots, N$, has a corresponding hybrid stream function given by (3.6). The point vortex at the origin in $g'_n(z)$ remains embedded in the hybrid solution as a point vortex with positive circulation $N - n - 1/2$. The iteration terminates when this circulation becomes $+1/2$. The polynomials in the rational functions $g'_n(z)$ above are discussed in a quite different setting by Duistermaat & Grünbaum (1986).

9. Infinite Liouville chains

We construct in the following three infinite chains of equilibria whose stream functions are given by (3.6). The rational functions $g'_n(z)$ in the first Liouville chain we construct are related to the Adler–Moser polynomials (Adler & Moser 1978), whereas the rational functions for the second and third Liouville chains are related to the polynomials described in Loutsenko (2004). In fact, the example chain discussed in § 4 is given in terms of the first hierarchy of polynomials owing to Loutsenko (2004); see § 9.2.

9.1. Liouville chain in terms of Adler–Moser polynomials

Successive Adler–Moser polynomials are produced by (6.7) with the seed equilibrium function and twist parameters (Krishnamurthy *et al.* 2020)

$$g'_0(z) = z^2 \quad \text{and} \quad \alpha_n = -1 \quad \text{for} \quad n \geq 0. \tag{9.1a,b}$$

Thus $\Gamma = 1$ in (6.8). The first few rational functions $g'_n(z)$ are

$$g'_1(z) = \frac{(z^3 + 3C_0)^2}{z^2}, \tag{9.2a}$$

$$g'_2(z) = \frac{(z^6 + 15C_0z^3 + 5C_1z - 45C_0^2)^2}{(z^3 + 3C_0)^2}, \tag{9.2b}$$

$$g'_3(z) = \frac{q^2(z)}{(z^6 + 15C_0z^3 + 5C_1z - 45C_0^2)^2}, \tag{9.2c}$$

where the polynomial $q(z)$ is

$$\begin{aligned} q(z) = & z^{10} + 45C_0z^7 + 35C_1z^5 + 7C_2z^3 - 525C_0C_1z^2 \\ & + 4725C_0^3z + 21C_0C_2 - \frac{175}{3}C_1^2. \end{aligned} \tag{9.2d}$$

The Adler–Moser polynomials $p_n(z)$ are then read off from (9.2) via the formula

$$g'_n(z) = \frac{p_{n+1}^2(z)}{p_n^2(z)} \quad \text{for} \quad n \geq 0. \tag{9.3}$$

To compare $p_n(z)$ with the polynomials given in Adler & Moser (1978), one must redefine their parameters τ_2, τ_3, \dots as $\tau_2 = 3C_0, \tau_3 = 5C_1, \tau_4 = 7C_2$ and so on.

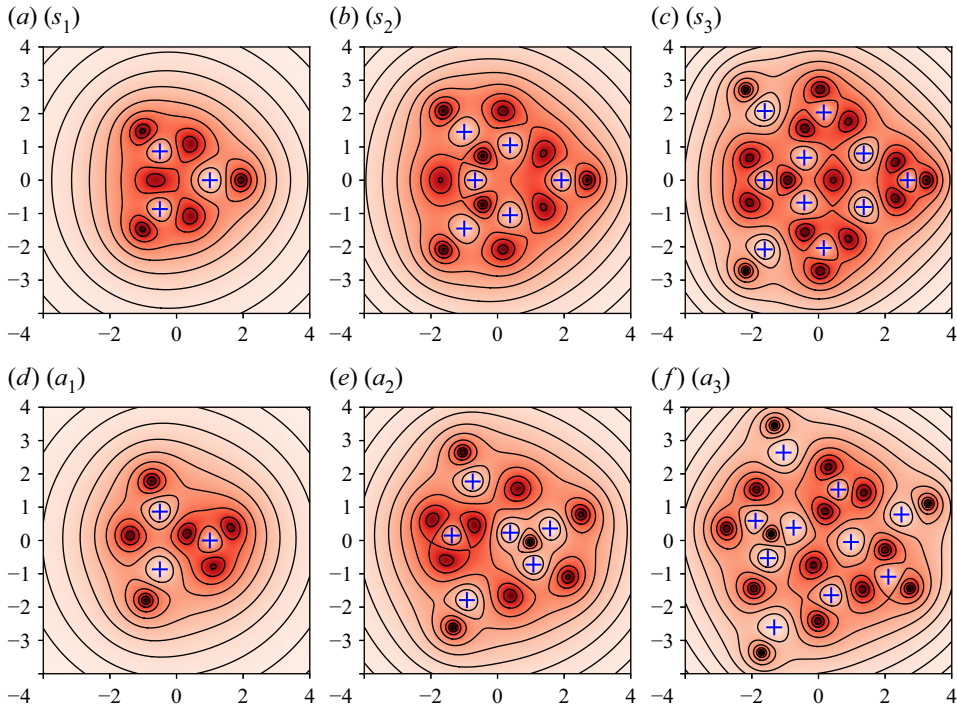


Figure 8. Streamline patterns for a Liouville chain formed from the hierarchy of Adler–Moser polynomials. The panels corresponding to (s_n) and (a_n) show the hybrid stream functions $\psi_n(z, \bar{z})$ given by (3.6) for $n = 1, 2, 3$; the corresponding rational functions $g'_n(z)$ are given by (9.2). Panels (a–c) corresponding to (s_n) are symmetric configurations whereas (d–f) corresponding to (a_n) are asymmetric configurations – they differ in the choice of constants C_0, \dots, C_3 in (9.2). The values of these constants are given in table 1. The point vortex limits of (s_n) and (a_n) are shown in panels (S1)–(S4) and (A1)–(A4) of figure 3 in Krishnamurthy *et al.* (2020).

The hybrid stream functions follow from substituting (9.2) into (3.6) and the corresponding streamline patterns are shown in figure 8. The limiting cases $A_0 = 0, \infty$ are stationary pure point vortex equilibria given by $g'_0(z)$ and $g'_1(z)$; the limiting cases $A_1 = 0, \infty$ are stationary pure point vortex equilibria given by $g'_1(z)$ and $g'_2(z)$, and so on; see the schematic in figure 1. The point vortex locations in these limiting patterns are, of course, given by the roots of successive Adler–Moser polynomials and are shown in figure 3 of Krishnamurthy *et al.* (2020). The value of the twist parameter α_n in (9.1a,b) is chosen so that, at each step, the iteration can be continued.

9.2. Liouville chains in terms of the Loutsenko polynomials

There are two hierarchies of polynomials described in Loutsenko (2004), both of which are produced by the iterated transformation (6.7) (Krishnamurthy *et al.* 2020). The first hierarchy results from the choice of seed equilibrium function and twist parameters

$$g'_0(z) = z, \quad \text{and} \quad \alpha_n = \begin{cases} -2 & \text{for } n \text{ even,} \\ -1/2 & \text{for } n \text{ odd.} \end{cases} \quad (9.4a,b)$$

This corresponds to setting $\Gamma = 1/2$ in (6.8). We see that $g'_0(z)$ in (9.4a,b) is actually the input equilibrium function (4.1) with which we started the construction in § 4; the twist parameters used there are also the same as those used in (9.4a,b). In fact, the Liouville

chain constructed in § 4 is given in terms of the first hierarchy of Loutsenko polynomials. The first few rational functions in this hierarchy, produced by (6.7), are

$$g'_1(z) = \frac{(z^2 + 2C_0)^4}{z^2}, \tag{9.5a}$$

$$g'_2(z) = \frac{z^8 + \frac{56}{5}C_0z^6 + 56C_0^2z^4 + 224C_0^3z^2 + 7C_1z - 112C_0^4}{(z^2 + 2C_0)^2}, \tag{9.5b}$$

$$g'_3(z) = \frac{(z^7 + 14C_0z^5 + 140C_0^2z^3 + 5C_2z^2 - 280C_0^3z + 10C_0C_2 - \frac{35}{2}C_1)^4}{(z^8 + \frac{56}{5}C_0z^6 + 56C_0^2z^4 + 224C_0^3z^2 + 7C_1z - 112C_0^4)^2}. \tag{9.5c}$$

The hybrid equilibria follow from substitution of (9.5) into (3.6). Streamline patterns for the Liouville links $n = 0, 1, 2$ in this chain are shown in figure 4.

Polynomials $p_n(z)$ are read off from the rational function $g'_n(z)$ using the formula

$$g'_n(z) = \begin{cases} \frac{p_{n+1}(z)}{p_n^2(z)} & \text{for } n \text{ even,} \\ \frac{p_{n+1}^4(z)}{p_n^2(z)} & \text{for } n \text{ odd.} \end{cases} \tag{9.6}$$

To compare $p_n(z)$ with the polynomials described in Loutsenko (2004), the branch $i \leq 0$ in his notation, one needs to first rename the polynomials $p_n(z)$ according to $p_n \rightarrow p_{-(n+1)/2}$ for n odd and $p_n \rightarrow q_{-n/2}$ for $n \geq 2$ and even. We can make the identification after redefining his parameters $\tau_{-1}, t_{-2}, \tau_{-2}, \dots$ as $\tau_{-1} = 2C_0, t_{-2} = 7C_1, \tau_{-2} = 5C_2$ and so on. The second hierarchy of Loutsenko is produced using (6.7) with the seed equilibrium function and twist parameters taken to be

$$g'_0(z) = z^4, \quad \text{and} \quad \alpha_n = \begin{cases} -1/2 & \text{for } n \text{ even,} \\ -2 & \text{for } n \text{ odd.} \end{cases} \tag{9.7a,b}$$

The first few rational functions are

$$g'_1(z) = \frac{z^5 + 5C_0}{z^2}, \quad g'_2(z) = \frac{(z^5 + 4C_1z - 20C_0)^4}{(z^5 + 5C_0)^2}, \quad g'_3(z) = \frac{q(z)}{(z^5 + 4C_1z - 20C_0)^2}, \tag{9.8a}$$

where the numerator polynomial $q(z)$ in $g'_3(z)$ is

$$\begin{aligned} q(z) = & z^{16} + \frac{176}{7}C_1z^{12} - 160C_0z^{11} + 352C_1^2z^8 - \frac{42240}{7}C_0C_1z^7 \\ & + 35200C_0^2z^6 + 11C_2z^5 - 2816C_1^3z^4 + 28160C_0C_1^2z^3 \\ & - 140800C_0^2C_1z^2 + 352000C_0^3z - \frac{2816}{5}C_1^4 + 55C_0C_2. \end{aligned} \tag{9.8b}$$

We can read off polynomials $p_n(z)$ from (9.8) using the formula

$$g'_n(z) = \begin{cases} \frac{p_{n+1}^4(z)}{p_n^2(z)} & \text{for } n \text{ even,} \\ \frac{p_{n+1}(z)}{p_n^2(z)} & \text{for } n \text{ odd.} \end{cases} \tag{9.9}$$

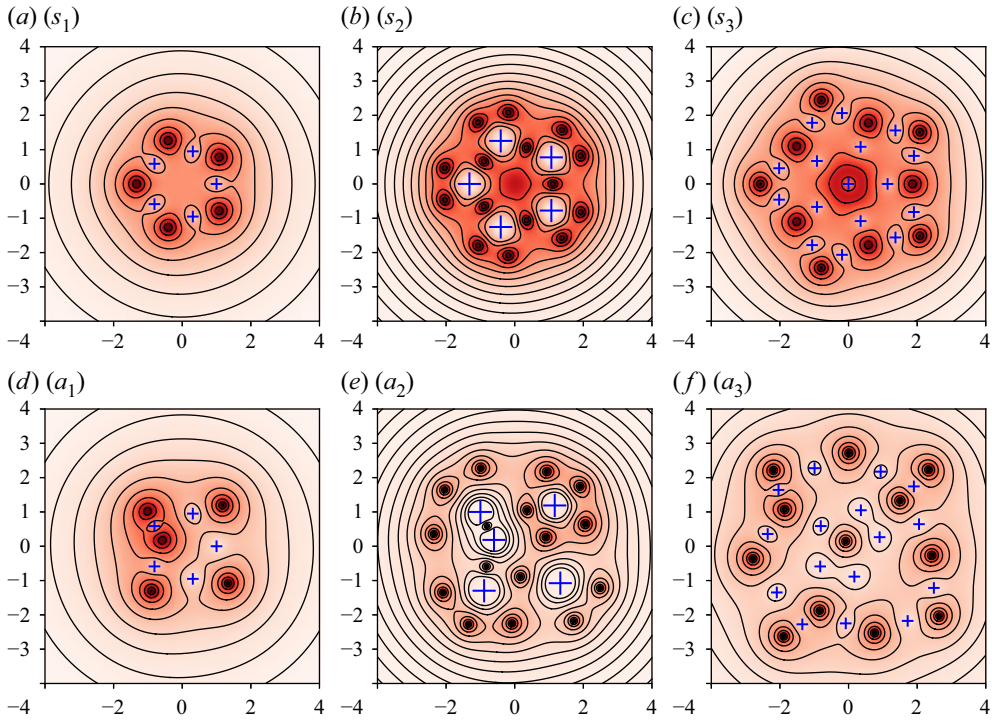


Figure 9. Symmetric (s_n ; $a-c$) and asymmetric (a_n ; $d-f$) streamline patterns of the hybrid stream functions (3.6) for $n = 1, 2, 3$ given in terms of the second Loutsenko hierarchy (9.8). The values of the constants used here are given in table 1. The corresponding point vortex limits are shown in figure 5 of Krishnamurthy *et al.* (2020).

To compare $p_n(z)$ with the polynomials from the branch $i \geq 0$ in Loutsenko (2004), one must rename $p_n(z)$ according to $p_n \rightarrow p_{n/2}$ for $n \geq 0$ even and $p_n \rightarrow q_{(n+1)/2}$ for n odd; and redefine his parameters as $t_1 = 5C_0$, $\tau_2 = 4C_1$ and so on.

Figure 9 shows the streamline patterns for the hybrid equilibria obtained from (9.8), for the cases $n = 1, 2, 3$. The corresponding limiting point vortex patterns of these Liouville links are shown in figure 5 of Krishnamurthy *et al.* (2020). It is seen in figure 9 that the inter-streamline distance alternately increases and decreases as we move up the hierarchy. The total circulation of the hybrid equilibria is calculated in Appendix A. From (A5), we see that for any finite A_n , the total circulation of the hybrid solution is simply given in terms of the net circulation of the underlying point vortex equilibrium, $\Gamma_{hyb} = -(\Gamma_{pv} + 1)$ because $\Gamma_{pv} > 0$. It is easily calculated from (9.4a,b) and (9.7a,b) that Γ_{pv} oscillates up and down as we move up the hierarchy, which is the reason for the alternating streamline patterns. Although this is true also for figure 4, the pattern is not as easily visible there.

10. Summary and future directions

A large class of exact solutions of the 2-D Euler equation in the form of hybrid vortical equilibria has been derived. These solutions, named Liouville chains, are given by simple analytical expressions involving elementary functions. The individual links in the chain, called Liouville links, are hybrid vortex equilibria parametrised by a positive real parameter A and comprise point vortices embedded in an ambient Liouville-type field of smooth vorticity. Every Liouville link connects two pure point vortex equilibria that

emerge at each end of the parameter range: $A \rightarrow 0$ and $A \rightarrow \infty$. We might think of the hybrid equilibria as ‘extrapolating’ between the two pure point vortex equilibria. Liouville chains can be finite or infinite, with a possible twist needed to successfully produce a next link in the chain. Among other examples, three infinite Liouville chains have been presented explicitly: one associated with the Adler–Moser polynomials, and two others associated with polynomial hierarchies found by Loutsenko (2004). All of these Liouville chains constitute new exact solutions of the 2-D Euler equations.

The transformation between stationary point vortex equilibria presented in Krishnamurthy *et al.* (2020) links the two limiting cases of the hybrid equilibria. The hybrid equilibria are rotational solutions that connect two distinct irrotational solutions of the steady Euler equation, continuously deforming one into the other as the parameter A is varied. The present study shows that it can be non-trivial to choose an appropriate function $h'(z)$ in (1.2) that leads to a meaningful steady solution of the Euler equation. Future investigations, with various other choices of $h'(z)$, could reveal a variety of simple and explicit solutions that are of the hybrid-type presented here.

Although the hybrid equilibria contain free parameters in the form of the integration constants C , the physical meaning – if any – of these parameters has not been investigated. However, the presence of these free parameters can be exploited to model different types of flows. Meiburg & Newton (1991) and Newton & Meiburg (1991) studied the effect of viscosity on shear flows by taking the parameter in the original Stuart solution (Stuart 1967) to depend on viscosity. Fraenkel (2008) considered the same question in a more general setting by taking the Stuart solutions as the initial condition for the unsteady Navier–Stokes equation. One might also consider the current solutions as the initial condition for the unsteady Euler equation and, by allowing the parameters to depend on time, investigate the resulting dynamics. Pierrehumbert & Widnall (1981) considered the question of stability of the original Stuart vortex row (Stuart 1967). The nonlinear stability of Stuart vortices was examined by Holm, Marsden & Ratiu (1986), who found a range of parameter values for which stable solutions exist. See Friedlander (1999) for a general introduction to stability of solutions to the Euler equation. All these stability results will likely be modified if point vortices are present in the flow, and the stability of hybrid solutions with multiple point vortices is an important question that needs to be addressed. Some recent progress for a single point vortex in a perturbed background vorticity field is reported in Ionescu & Jia (2021).

The effects of compressibility on the incompressible Stuart vortex solution was considered by Meiron, Moore & Pullin (2000), who used Rayleigh–Jansen expansions for analytical studies of low-Mach-number flow. The classical Kármán point vortex street has been extended to a weakly compressible flow recently by Crowdy & Krishnamurthy (2017), who also discuss and clarify the general force-free condition required for a point vortex to be in equilibrium in weakly compressible flows. The weakly compressible counterpart of the hollow vortex street (Crowdy & Green 2011) has been studied by Crowdy & Krishnamurthy (2018). This recent activity on weakly compressible flows with embedded vortices gives analytical and numerical evidence for the existence of smooth transonic flows. The weakly compressible counterparts of the hybrid equilibria studied here (unlike the above cases, these are not periodic) are a natural object of study in this respect.

It is possible to make different choices for the vorticity function $V(\psi)$ in (2.4) and obtain corresponding steady solutions to the Euler equation. The choice of $V(\psi) = \sinh \psi$ gives the sinh-Poisson equation considered by Mallier & Maslowe (1993), whose periodic solution consists of an alternating row of counter-rotating vortices. Using more abstract

methods than those presented here, it has been shown by Bartsch, Pistoia & Weth (2010) that the sinh-Poisson equation in a bounded domain has a limiting case, where the vorticity concentrates into delta distributions. In fact, their investigation uses the Liouville equation whose explicit solutions are considered here. The class of all functions V with smooth vorticity, which concentrate into point vortices in some appropriate limits, does not appear to have been investigated in detail.

There is a large amount of mathematical literature on singular solutions of the Liouville equation in bounded domains. See for instance del Pino, Esposito & Musso (2010) and Ma & Wei (2001). Moreover, Gustafsson (1979) and Richardson (1980) have independently shown that the Hamiltonian for a single point vortex in a simply connected domain also obeys the Liouville equation with the boundary condition that the Hamiltonian is infinite on the boundary. Crowdy (2006) has shown that the same idea extends to point vortex motion in a simply connected domain on the surface of a sphere.

The proofs presented in this paper use local analyses, but an alternative treatment borrowing ideas from mathematical physics can be given. Some of the connections to mathematical physics may be seen from the appearance of the Adler–Moser polynomials (Adler & Moser 1978) and the Loutsenko polynomials (Loutsenko 2004). These polynomials are not new in the context of purely point vortex equilibria; for a detailed discussion, see for example Aref *et al.* (2003), Aref (2007*b*), Clarkson (2009) and Krishnamurthy *et al.* (2020). But the appearance of these polynomials in the context of rotational flows and specifically the Liouville-type equation (1.3) calls for further investigation.

Several other avenues for extending the solutions derived here present themselves. The original solutions of Stuart (1967) are singly-periodic solutions and we can ask if there are singly periodic hybrid equilibria. Stuart vortex solutions have been extended to a sphere (Crowdy 2004) and a torus (Sakajo 2019). The existence of more general hybrid equilibria on these compact surfaces, which consist of greater numbers of point vortices, is an open question. Extensions of Stuart vortex solutions to the rotating sphere have also been considered recently, in the context of geophysical applications, to study large scale planetary structures such as gyres (Constantin & Krishnamurthy 2019) and polar vortices (Constantin *et al.* 2021). The utility of the much richer set of hybrid solutions presented here in such applications needs further examination. We have already made progress in some of these directions and our results will be reported elsewhere.

Acknowledgements. We would like to thank the anonymous reviewers for their constructive suggestions.

Funding. V.S.K. was supported by the WWTF research grant number MA16-009. D.G.C. acknowledges support from the European Partners Funds at Imperial College London. V.S.K. and D.G.C. received support from EPSRC grant number EP/R014604/1 during the program ‘Complex analysis: techniques, applications and computations’ held at the Isaac Newton Institute in Cambridge during September–December 2019.

Declaration of interests. The authors report no conflict of interest.

Author ORCIDs.

- ✉ Vikas S. Krishnamurthy <https://orcid.org/0000-0002-1518-0994>;
- ✉ Miles H. Wheeler <https://orcid.org/0000-0002-7286-9587>;
- ✉ Darren G. Crowdy <https://orcid.org/0000-0002-7162-0181>;
- ✉ Adrian Constantin <https://orcid.org/0000-0001-8868-9305>.

Appendix A. Net circulation of the flow

In this appendix, we calculate the total circulation of the hybrid equilibria,

$$\Gamma_{hyb} = \lim_{r \rightarrow \infty} \oint_{|z|=r} (u \, dx + v \, dy) = \lim_{r \rightarrow \infty} \operatorname{Re} \oint_{|z|=r} (u - iv) \, dz, \tag{A1}$$

in terms of the net circulation $\Gamma_{pv} = \sum_{j=1}^M \Gamma_j$ of the input point vortex equilibrium represented by (3.4).

Let us first consider Γ_{hyb} in the point vortex limits $A \rightarrow 0, \infty$, which have the complex potentials G, F given in (3.5a,b). As $|z| \rightarrow \infty$, the rational function $g'(z) \sim z^{2\Gamma_{pv}}$. From § 5.1, we know that the primitive $g(z)$ is rational so that $\Gamma_{pv} \neq -1/2$ and hence $g(z) \sim z^{2\Gamma_{pv}+1}$. This yields the asymptotics

$$G(z) \sim \frac{\Gamma_{pv}}{2\pi i} \log z \quad \text{and} \quad F(z) \sim -\frac{(\Gamma_{pv} + 1)}{2\pi i} \log z, \tag{A2a,b}$$

which imply that the total circulations are

$$\Gamma_{hyb} = \begin{cases} \Gamma_{pv} & \text{at } A = 0, \\ -(\Gamma_{pv} + 1) & \text{at } A = \infty. \end{cases} \tag{A3}$$

Note that when comparing Γ_{hyb} at $A = \infty$ with the circulations of the point vortices in the equilibrium function $\hat{g}'(z)$ introduced via the transformation (6.4), we need to further scale by the parameter α .

Turning now to true hybrid equilibria with $0 < A < \infty$, there is no complex potential and, instead, we must use the formula (3.2) for the hybrid stream function. As $|z| \rightarrow \infty$, we have, as earlier, $g'(z) \sim z^{2\Gamma_{pv}}$ and $g(z) \sim z^{2\Gamma_{pv}+1}$. We find after some calculation that the behaviour of the hybrid stream function now depends on the sign of Γ_{pv} ,

$$\psi \sim \begin{cases} -\frac{\Gamma_{pv}}{2\pi} \log |z| + O\left(\frac{1}{|z|}\right) & \text{if } \Gamma_{pv} < 0, \\ \frac{(\Gamma_{pv} + 1)}{2\pi} \log |z| + O\left(\frac{1}{|z|}\right) & \text{if } \Gamma_{pv} > 0. \end{cases} \tag{A4}$$

The total circulation can be read off as

$$\Gamma_{hyb} = \begin{cases} \Gamma_{pv} & \text{if } \Gamma_{pv} < 0, \\ -(\Gamma_{pv} + 1) & \text{if } \Gamma_{pv} > 0. \end{cases} \tag{A5}$$

In particular, Γ_{hyb} is independent of A for $0 < A < \infty$, but is discontinuous at $A = 0$ (if $\Gamma_{pv} > 0$) or $A = \infty$ (if $\Gamma_{pv} < 0$). This discontinuity can be interpreted as some of the negative Liouville-type vorticity ‘leaking out to infinity’. Mathematically, it occurs because the limit $r \rightarrow \infty$ in (A1) does not commute with the relevant limit $A \rightarrow 0$ or $A \rightarrow \infty$. Note that if the value of b differs from -8π , then the circulations Γ_{pv} and $(\Gamma_{pv} + 1)$ in the above formulae are scaled by $-8\pi/b$.

Appendix B. Conventions and values for the parameters

In our discussions, we have considered a particular integral $h(z)$ of $h'(z)$, for example in sections § 5.1 and § 5.2. We have written the integral of $g'(z)$ as $g(z) + C$, where we now

Figure		A	C ₀	C ₁	C ₂	C ₃
7	(s _{3,1})	A ₁ = 3	1	—	—	—
	(s _{3,2})	A ₂ = 2 × 10 ⁻¹	1	0	—	—
	(s _{3,3})	A ₃ = 1.5 × 10 ⁻²	1	0	0	—
	(a _{3,1})	A ₁ = 3	1 + i	—	—	—
	(a _{3,2})	A ₂ = 2 × 10 ⁻¹	1 + i	10i	—	—
	(a _{3,3})	A ₃ = 1.5 × 10 ⁻²	1 + i	10i	-8	—
8	(s ₁)	A ₁ = 1	-1/3	-1	—	—
	(s ₂)	A ₂ = 5 × 10 ⁻²	-1/3	-1	20	—
	(s ₃)	A ₃ = 3 × 10 ⁻³	-1/3	-1	20	80
	(a ₁)	A ₁ = 1	-1/3	2 - i	—	—
	(a ₂)	A ₂ = 5 × 10 ⁻²	-1/3	2 - i	8 - 8i	—
	(a ₃)	A ₃ = 3 × 10 ⁻³	-1/3	2 - i	8 - 8i	40 + 120i
9	(s ₁)	A ₁ = 3	-1/5	0	—	—
	(s ₂)	A ₂ = 10 ⁻²	-1/5	0	0	—
	(s ₃)	A ₃ = 5 × 10 ⁻²	-1/5	0	0	0
	(a ₁)	A ₁ = 3	-1/5	(3 + i)/2	—	—
	(a ₂)	A ₂ = 10 ⁻²	-1/5	(3 + i)/2	1000 - 2000i	—
	(a ₃)	A ₃ = 5 × 10 ⁻²	-1/5	(3 + i)/2	1000 - 2000i	100 + 100i

Table 1. Values of constants used in figures 7, 8 and 9. The constants C_n are calculated according to the convention discussed in Appendix B.

describe our convention for choosing the integration constant C. This is closely related to that adopted in Krishnamurthy *et al.* (2020).

If N(z)/D(z) is a rational primitive of g'(z) for some polynomials N(z) and D(z), then by polynomial long division

$$\frac{N(z)}{D(z)} = P(z) + \frac{R(z)}{D(z)}, \tag{B1}$$

where here P(z) and R(z) are polynomials and the degree of R(z) is strictly less than that of D(z). We define

$$g(z) = P(z) - P(0) + \frac{R(z)}{D(z)}. \tag{B2}$$

This is equivalent to setting the constant term in (B1) equal to zero. Adding in the constant C explicitly, the general antiderivative of g'(z) can be written as g(z) + C. The functions h'(z) and h(z) are then given by (3.1a,b).

We now describe our convention for the constant Ê. The definition (5.4) of the rational function g'(z) shows its numerator and denominator polynomials to be monic. On the other hand, this will not be true in general of the rational function g(z) + C. We treat Ê in (6.4) as a constant and choose its value so that ĝ'(z) also has monic numerator and denominator polynomials. The convention for the constants E_n appearing in (6.7) is similar, we choose E_n so that g'_n(z) consists of monic numerator and denominator polynomials for all n ≥ 0.

A note is in order here about comparing the notation of the present paper with that in Krishnamurthy *et al.* (2020). Because that paper deals exclusively with pure point vortex equilibria, adding constants to the complex potential leaves the velocity field unaltered and the parameter A is a constant with no physical significance there. When comparing

the two papers, it is helpful to respectively translate the A, \hat{A}, A_n and $h(z), h'(z)$ that appear in Krishnamurthy *et al.* (2020) to the E, \hat{E}, E_n and $g(z), g'(z)$ that appear in the current paper.

The rational functions presented in this paper were all obtained using computer algebra packages. The computer algebra was performed using the SymPy Python library and cross-checked using Mathematica. Different computer algebra packages can produce different rational functions as primitives of a given rational function. The rational functions produced at the end can differ significantly, especially when the procedure is iterated as in Liouville chains. It is therefore important to follow a set convention for the integration constants and other parameters, as described here.

The constants a and b in the hybrid stream function (1.2) should satisfy the constraint $ab < 0$. We choose $b = -8\pi$, so that the circulation of the embedded positive point vortices in the hybrid solution is scaled by 1; see the end of § 5.2. We then set $a = 1/(4\pi)$ so that $ab = -2$ and the argument in the logarithm of (1.2) simplifies. From (2.2) and (1.3), the sign of the background vorticity is determined by the sign of $-a$; hence our choice ensures negative Liouville-type vorticity. This scaling is consistent with the scaling used in Krishnamurthy *et al.* (2019). The values of the parameters A_n and C_n used to produce the figures are given in table 1, unless specified in the figure itself. Successive streamline contours are separated by a constant value of the stream function in all of the figures, but this value can vary across figures.

REFERENCES

- ABRASHKIN, A.A. & YAKUBOVICH, E.I. 1984 Two-dimensional vortex flows of an ideal fluid. *Dokl. Akad. Nauk SSSR* **276**, 76–78.
- ADLER, M. & MOSER, J. 1978 On a class of polynomials connected with the Korteweg-de Vries equation. *Commun. Math. Phys.* **30**, 1–30.
- AIRAULT, H., MCKEAN, H.P. & MOSER, J. 1977 Rational and elliptic solutions of the Korteweg-de Vries equation and a related many-body problem. *Commun. Pure Appl. Maths* **30**, 95–148.
- AREF, H. 2007a Point vortex dynamics: a classical mathematics playground. *J. Math. Phys.* **48**, 065401.
- AREF, H. 2007b Vortices and polynomials. *Fluid Dyn. Res.* **39**, 5–23.
- AREF, H. 2011 Relative equilibria of point vortices and the fundamental theorem of algebra. *Proc. R. Soc. Lond. A* **467**, 2168–2184.
- AREF, H., NEWTON, P.K., STREMLER, M.A., TOKIEDA, T. & VAINCHTEIN, D.L. 2003 Vortex crystals. *Adv. Appl. Mech.* **39**, 1–79.
- BARTMAN, A.B. 1984 A new interpretation of the Adler-Moser KdV polynomials: interaction of vortices. In *Nonlinear and Turbulent Processes in Physics* (ed. R.Z. Sagdeev), vol. 3 (Kiev, 1983), pp. 1175–1181. Harwood Academic Publication.
- BARTSCH, T., PISTOIA, A. & WETH, T. 2010 N -vortex equilibria for ideal fluids in bounded planar domains and new nodal solutions of the sinh-Poisson and the Lane–Emden–Fowler equations. *Commun. Math. Phys.* **297**, 653–686.
- BURCHNALL, J.L. & CHAUNDY, T.W. 1930 A set of differential equations which can be solved by polynomials. *Proc. London Math. Soc. (2)* **30**, 401–414.
- CLARKSON, P.A. 2009 Vortices and polynomials. *Stud. Appl. Maths* **123**, 37–62.
- CONSTANTIN, A., CROWDY, D.G., KRISHNAMURTHY, V.S. & WHEELER, M.H. 2021 Stuart-type polar vortices on a rotating sphere. *Discrete Contin. Dyn. Syst. A* **41** (1), 201–215.
- CONSTANTIN, A. & KRISHNAMURTHY, V.S. 2019 Stuart-type vortices on a rotating sphere. *J. Fluid Mech.* **865**, 1072–1084.
- CROWDY, D.G. 1997 General solutions to the 2D Liouville equation. *Intl J. Engng Sci.* **35**, 141–149.
- CROWDY, D.G. 1999 A class of exact multipolar vortices. *Phys. Fluids* **11**, 2556–2564.
- CROWDY, D.G. 2002 Exact solutions for rotating vortex arrays with finite-area cores. *J. Fluid Mech.* **469**, 209–235.
- CROWDY, D.G. 2003 Polygonal N -vortex arrays: A Stuart model. *Phys. Fluids* **15**, 3710–3717.
- CROWDY, D.G. 2004 Stuart vortices on a sphere. *J. Fluid Mech.* **498**, 381–402.

- CROWDY, D.G. 2006 Point vortex motion on the surface of a sphere with impenetrable boundaries. *Phys. Fluids* **18**, 036602.
- CROWDY, D.G. & GREEN, C.C. 2011 Analytical solutions for von Kármán streets of hollow vortices. *Phys. Fluids* **23**, 126602.
- CROWDY, D.G. & KRISHNAMURTHY, V.S. 2017 Speed of a von Kármán point vortex street in a weakly compressible fluid. *Phys. Rev. Fluids* **2**, 114701.
- CROWDY, D.G. & KRISHNAMURTHY, V.S. 2018 The effect of core size on the speed of compressible hollow vortex streets. *J. Fluid Mech.* **836**, 797–827.
- CROWDY, D.G. & MARSHALL, J.S. 2005 Analytical solutions for rotating vortex arrays involving multiple vortex patches. *J. Fluid Mech.* **523**, 307–338.
- DEMINA, M.V. & KUDRYASHOV, N.A. 2012 Vortices and polynomials: non-uniqueness of the Adler-Moser polynomials for the Tkachenko equation. *J. Phys. A* **45** (19), 195205.
- DRAZIN, P.G. & RILEY, N. 2006 *The Navier–Stokes Equations: A Classification of Flows and Exact Solutions*. London Mathematical Society Lecture Note Series, vol. 334. Cambridge University Press.
- DUISTERMAAT, J.J. & GRÜNBAUM, F.A. 1986 Differential equations in the spectral parameter. *Commun. Math. Phys.* **103** (2), 177–240.
- FRAENKEL, L.E. 2008 On Kelvin-Stuart vortices in a viscous fluid. *Phil. Trans. R. Soc. A* **366**, 2717–2728.
- FRIEDLANDER, S. 1999 Lectures on stability and instability of an ideal fluid. In *Hyperbolic Equations and Frequency Interactions (Park City, UT, 1995)*, IAS/Park City Math. Ser. (ed. L. Caffarelli), vol. 5, pp. 227–304. American Mathematical Society.
- GUSTAFSSON, B. 1979 On the motion of a vortex in two dimensional flow of an ideal fluid in simply and doubly connected domains. *Tech. Rep. TRITA- MAT-1979-7*. Royal Institute of Technology.
- HELMHOLTZ, H. 1858 Über Integrale der hydrodynamischen Gleichungen, welche den Wirbelbewegungen entsprechen. *J. Reine Angew. Math.* **55**, 25–55.
- HOLM, D.D., MARSDEN, J.E. & RATIU, T. 1986 Nonlinear stability of the Kelvin-Stuart cat’s eyes flow. In *Nonlinear Systems of Partial Differential Equations in Applied Mathematics, Part 2 (Santa Fe, N.M., 1984)*, Lectures in Appl. Math. (ed. B. Nicolaenko, D.D. Holm & J.M. Hyman), vol. 23, pp. 171–186. American Mathematical Society.
- IONESCU, A. & JIA, H. 2021 Axi-symmetrization near point vortex solutions for the 2D Euler equation. *Comm. Pure Appl. Math.* doi:10.1002/cpa.21974.
- KRISHNAMURTHY, V.S., WHEELER, M.H., CROWDY, D.G. & CONSTANTIN, A. 2019 Steady point vortex pair in a field of Stuart-type vorticity. *J. Fluid Mech.* **874**, R1.
- KRISHNAMURTHY, V.S., WHEELER, M.H., CROWDY, D.G. & CONSTANTIN, A. 2020 A transformation between stationary point vortex equilibria. *Proc. R. Soc. A* **476**, 20200310.
- LAMB, H. 1993 *Hydrodynamics*, 6th edn. Cambridge University Press.
- LLEWELLYN SMITH, S.G. 2011 How do singularities move in potential flow? *Physica D* **240**, 1644–1651.
- LOUTSENKO, I. 2004 Equilibrium of charges and differential equations solved by polynomials. *J. Phys. A: Math. Gen.* **37**, 1309–1321.
- MA, L. & WEI, J.C. 2001 Convergence for a Liouville equation. *Comment. Math. Helv.* **76**, 506–514.
- MALLIER, R. & MASLOWE, S.A. 1993 A row of counter-rotating vortices. *Phys. Fluids A* **5**, 1074–1075.
- MEIBURG, E. & NEWTON, P.K. 1991 Particle dynamics and mixing in a viscously decaying shear layer. *J. Fluid Mech.* **227**, 211–244.
- MEIRON, D.I., MOORE, D.W. & PULLIN, D.I. 2000 On steady compressible flows with compact vorticity; the compressible Stuart vortex. *J. Fluid Mech.* **409**, 29–49.
- MORIKAWA, G.K. & SWENSON, E.V. 1971 Interacting motion of rectilinear geostrophic vortices. *Phys. Fluids* **14**, 1058.
- NEWTON, P.K. 2001 *The N-vortex problem: Analytical techniques*. Applied Mathematical Sciences, vol. 145. Springer.
- NEWTON, P.K. & MEIBURG, E. 1991 Particle dynamics in a viscously decaying cat’s eye: The effect of finite Schmidt numbers. *Phys. Fluids A* **3**, 1068–1072.
- O’NEIL, K.A. 1987 Stationary configurations of point vortices. *Trans. Amer. Math. Soc.* **302**, 383–425.
- O’NEIL, K.A. 2006 Minimal polynomial systems for point vortex equilibria. *Physica D* **219**, 69–79.
- O’NEIL, K.A. 2018a Dipole and multipole flows with point vortices and vortex sheets. *Regul. Chaotic Dyn* **23**, 519–529.
- O’NEIL, K.A. 2018b Relative equilibria of point vortices and linear vortex sheets. *Phys. Fluids* **30**, 107101.
- O’NEIL, K.A. & COX-STEIB, N. 2014 Generalized Adler-Moser and Loutsenko polynomials for point vortex equilibria. *Regul. Chaotic Dyn.* **19** (5), 523–532.
- PIERREHUMBERT, R.T. & WIDNALL, S.E. 1981 The structure of organized vortices in a free shear layer. *J. Fluid Mech.* **102**, 301–313.

Liouville chains of hybrid vortex equilibria

- DEL PINO, M., ESPOSITO, P. & MUSSO, M. 2010 Two-dimensional Euler flows with concentrated vorticities. *Trans. Amer. Math. Soc.* **362**, 6381–6395.
- RICHARDSON, S. 1980 Vortices, Liouville's equation and the Bergman kernel function. *Mathematika* **27** (2), 321–334.
- SAFFMAN, P.G. 1981 Dynamics of vorticity. *J. Fluid Mech.* **106**, 49–58.
- SAFFMAN, P.G. 1992 *Vortex Dynamics*. Cambridge University Press.
- SAKAJO, T. 2019 Exact solution to a Liouville equation with Stuart vortex distribution on the surface of a torus. *Proc. R. Soc. A* **475**, 20180666.
- STUART, J.T. 1967 On finite amplitude oscillations in laminar mixing layers. *J. Fluid Mech.* **29**, 417–440.
- TUR, A. & YANOVSKY, V. 2004 Point vortices with a rational necklace: New exact stationary solutions of the two-dimensional Euler equation. *Phys. Fluids* **16**, 2877–2885.
- TUR, A., YANOVSKY, V. & KULIK, K. 2011 Vortex structures with complex points singularities in two-dimensional Euler equation. New exact solutions. *Physica D* **240**, 1069–1079.
- YOON, J., YIM, H. & KIM, S.-C. 2020 Stuart vortices on a hyperbolic sphere. *J. Math. Phys.* **61**, 023103.