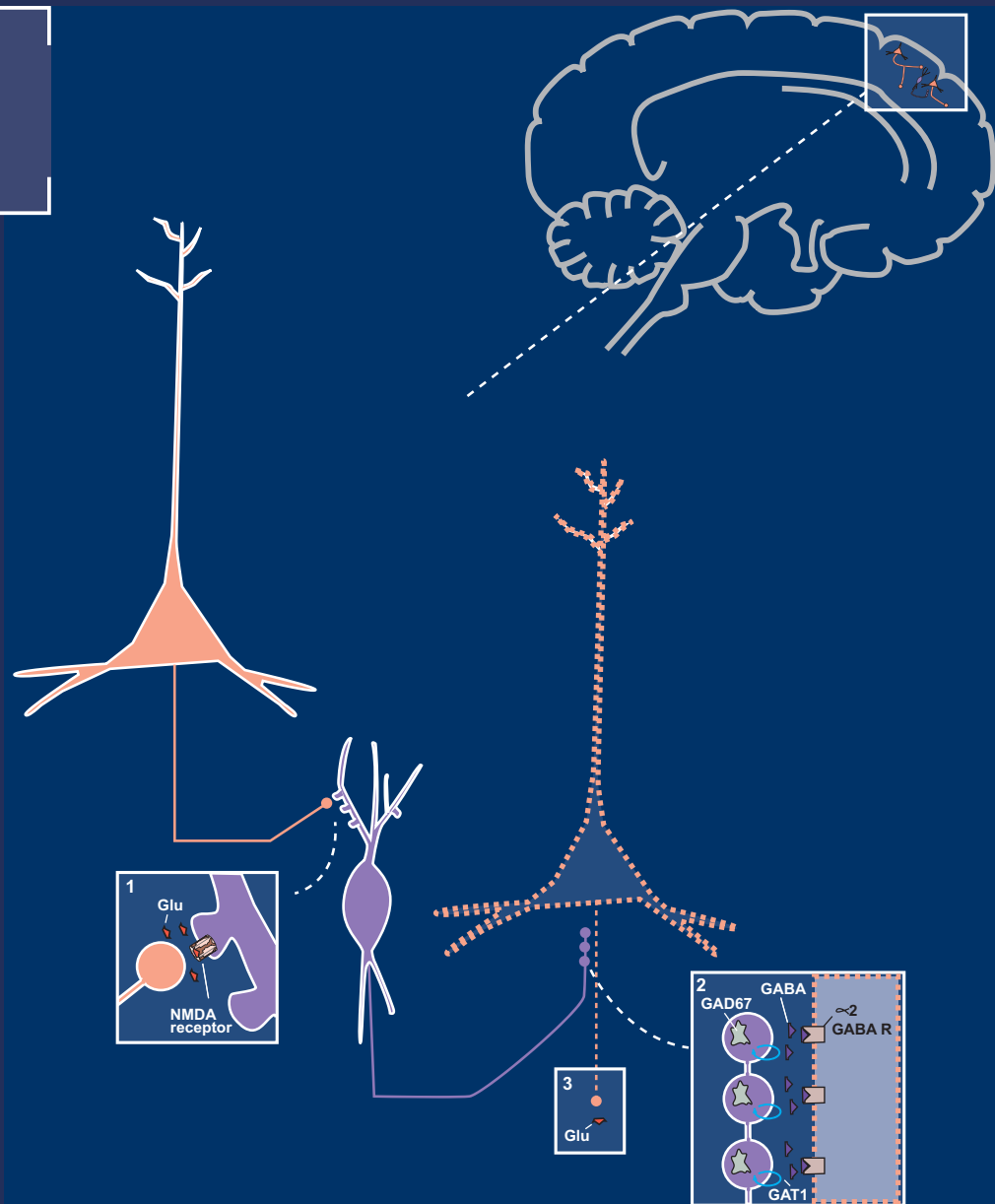


VOLUME 21 | Supplement 1

December 2016

ISSN: 1092-8529



cambridge.org/cns

CNS SPECTRUMS

EDITOR-IN-CHIEF: **STEPHEN M. STAHL**

The journal of the
 **Neuroscience
Education Institute**

 **CAMBRIDGE
UNIVERSITY PRESS**

Editor-in-Chief

Stephen M. Stahl, Adjunct Professor of Psychiatry at the University of California San Diego, USA;
Honorary Visiting Senior Fellow at the University of Cambridge, UK.

Field Editors

Joseph F. Goldberg, Icahn School of Medicine at Mount Sinai, USA
Thomas E. Schlaepfer, University Hospital Bonn, Germany
Carlos A. Zarate, National Institute of Mental Health, USA

Deputy Editor

Thomas L. Schwartz, SUNY Upstate Medical University at Syracuse, USA

Editorial Board

Maria Conceição do Rosario, University of São Paulo Medical School, Brazil
Jeffrey L. Cummings, Cleveland Clinic, USA
Thilo Deckersbach, Harvard Medical School, USA
Koen Demyttenaere, University Psychiatric Center KuLeuven, Belgium
Karen D. Ersche, University of Cambridge, UK
Robert L. Findling, Case Western Reserve University, USA
Joseph F. Goldberg, Icahn School of Medicine at Mount Sinai, USA
Mark S. George, Medical University of South Carolina, USA
Ira D. Glick, Stanford University, USA
Eric Hollander, Albert Einstein College of Medicine and Montefiore Medical Center, USA
Daphne Holt, Harvard Medical School, USA
Peter B. Jones, University of Cambridge, UK
Andres M. Kanner, University of Miami, USA
Anthony D. Loebel, New York University School of Medicine, USA
Donatella Marazziti, University of Pisa, Italy
Herbert Y. Meltzer, Northwestern University, USA
Philip Mitchell, University of New South Wales, Australia
Jun Nakamura, University of Occupational and Environmental Health, Japan
Humberto Nicolini, National Mexican Institute of Psychiatry, Mexico
Andrew A. Nierenberg, Harvard Medical School, USA
Stefano Pallanti, University of Florence, Italy
Katharine A. Phillips, Brown University, USA
Diego A. Pizzagalli, Harvard Medical School, USA
Mark H. Pollack, Rush University Medical Center, USA
Mark H. Rapaport, Emory University, USA
Irismar Reis de Oliveira, Universidade Federal da Bahia, Brazil
Trevor W. Robbins, University of Cambridge, UK
Peter P. Roy-Byrne, University of Washington School of Medicine, USA
Barbara J. Sahakian, University of Cambridge, UK
Gerard Sanacora, Yale University School of Medicine, USA
Alan F. Schatzberg, Stanford University School of Medicine, USA
Thomas L. Schwartz, SUNY Upstate Medical University in Syracuse, USA
Jordan W. Smoller, Harvard Medical School, USA
Dan J. Stein, University of Cape Town (UCT), South Africa
Stephen Strakowski, University of Cincinnati, USA
T. Scott Stroup, Columbia University, USA
Frank I. Tarazi, Harvard Medical School, USA
Michael E. Thase, University of Pennsylvania, USA
Michael Trimble, National Hospital for Neurology, Queen Square, London
Madhukar H. Trivedi, University of Texas Southwestern Medical Center, USA
Karen Dineen Wagner, The University of Texas Medical Branch, USA
Katherine D. Warburton, Department of State Hospitals, USA
Stephen R. Wisniewski, University of Pittsburgh, USA
Shigeto Yamawaki, Hiroshima University, Japan
Carlos A. Zarate, Jr., National Institute of Mental Health, USA
Joseph Zohar, Tel Aviv University, Israel

Managing Editor

Lisa Arrington, Cambridge University Press (larrington@cambridge.org)

Cover Image: The image on the cover shows a hypothetical model whereby glutamate is released from an intracortical pyramidal neuron and binds to an NMDA receptor on a GABA-ergic interneuron. GABA is then released and binds to receptors on the axon of another glutamate pyramidal neuron. This inhibits the neuron, thus reducing the release of cortical glutamate. The GABA interneuron and its NMDA synapse from the first neuron to the second is the hypothetical site of glutamate dysfunction in schizophrenia.

Stahl's Essential Psychopharmacology, 4th edition, by Stephen M. Stahl

Copyright © 2015 Stephen M. Stahl. Reproduced with permission.

CNS SPECTRUMS

CME SUPPLEMENT

CONTENTS

**Emerging pharmacological therapies in schizophrenia:
what's new, what's different, what's next?**

Leslie Citrome 1

**Forgotten but not gone: new developments in the
understanding and treatment of tardive dyskinesia**

Jonathan M. Meyer 13

**A pragmatic approach to the diagnosis and treatment of
mixed features in adults with mood disorders**

Roger S. McIntyre, Yena Lee and Rodrigo B. Mansur 25

Recognizing and treating pseudobulbar affect

William M. Saavé 34

**Optimizing outcomes in ADHD treatment: from clinical
targets to novel delivery systems**

Gregory W. Mattingly and Richard H. Anderson 45