

VOL. L, NO. 208.

JANUARY, 1904.

**THE JOURNAL**  

---

**OF**  
**MENTAL SCIENCE.**  

---

**EDITORS :**

Henry Rayner, M.D.                      A. R. Urquhart, M.D.  
Conolly Norman, F.R.C.P.I.

**ASSISTANT EDITORS :**

J. Chambers, M.D.                      J. R. Lord, M.B.



LONDON :

**J. & A. CHURCHILL,**  
7, GREAT MARLBOROUGH STREET.

**MSS. and Correspondence to be sent to Editors, 16, Queen Anne Street,  
London, W. Printed Matter to be sent to Messrs. Churchill. Change  
of Address of Members to be sent to the General Secretary  
and to Messrs. Adlard and Son.**

**Price Five Shillings.**

# JOURNAL OF MENTAL SCIENCE.

## Exchange Journals.

### British.

Asylum News; Brain; British Medical Journal; Bristol Medical-Chirurgical Journal; Dublin Medical Journal; Edinburgh Medical Journal; Glasgow Medical Journal; Hospital; Lancet; Mind; Proceedings of the Society for Psychical Research; Scottish Medical and Surgical Journal; Review of Neurology and Psychiatry.

### American.

Alienist and Neurologist; Journal of Insanity; Journal of Medical Sciences; Journal of Comparative Neurology; Journal of Mental and Nervous Diseases; Journal of Mental Pathology; Journal of Psychology; Medicine; Monthly Cyclopædia of Practical Medicine; Psychological Review; Quarterly Journal of Inebriety; Reports of the Smithsonian Institute; Transactions of the American Medico-Psychological Association; Universal Medical Journal.

### French.

Archives Anthropologie Criminelle; Annales Médico-Psychologiques; Annales des Sciences Psychiques; Archives de Neurologie; Gazette des Hôpitaux; Journal de Médecine de Bordeaux; Nouvelle Iconographie de la Salpêtrière; Polybiblion; Progrès Médicale; Revue Philosophique; Revue de Psychiatrie; Revue Scientifique; Revue de l'Hypnotisme; Bulletin de l'Institut Psychique.

### Belgian.

Bulletin de la Société de Médecine Mentale de Belgique.

### German.

Allgemeine Zeitschrift für Psychiatrie; Archiv für Psychiatrie und Nervenkrankheiten; Centralblatt für Anthropologie; Der Irrenfreund; Jahrbücher für Psychiatrie; Kraepelin's Psychologische Arbeiten; Monatsschrift für Psychiatrie und Neurologie; Neurologisches Centralblatt; Philosophische Studien; Psychiatrische Wochenschrift; Zeitschrift für Psychologie.

### Italian.

Annali di Freniatria; Annali di Nevrologia; Archivio di Psichiatria; Il Manicomio Moderno; La Psichiatria; Rivista di Patologia nervosa e mentale; Rivista Sperimentale di Freniatria; Rivista Neuropatologia Psichiatria; Rivista di Psicologia.

### Russian.

Archiv Psychiatrii, Nevrologuii, i Soudebnoi Psychopatologuii; Obozrenie Psychiatrii, Nevrologuii, i Experimentalnoi Psychologuii; Voprosi Nervno-psychitscheckoi Medizini; Voprosi filosofii i psychologuii.

## Books and Pamphlets Received.

Morals, the Psycho-Sociological Bases of Ethics, *Duprat*; Le Mouvement, *Woodworth*; Physiologische und Klinische Untersuchungen über das Gehirn, *Hitsig*; Psychiatrie (Allgemeine Psychiatrie), *Kraepelin*; Recherches Cliniques et Thérapeutiques sur l'Épilepsie, L'Hystérie, et l'Idiotie, *Bourneville*; The Physiognomy of Mental Diseases and Degeneracy, *James Shaw*; A Scheme of Brain Storage, *Farmer*; High Rate of Lunacy in Wiltshire, *Ireland Bomes*; Life, *Augusta Webster*.

THE  
MEDICO-PSYCHOLOGICAL ASSOCIATION  
OF GREAT BRITAIN AND IRELAND.

THE COUNCIL AND OFFICERS, 1903-4.

PRESIDENT.—ERNEST W. WHITE, M.B.  
PRESIDENT ELECT.—R. PERCY SMITH, M.D.  
EX-PRESIDENT.—JOSEPH WIGLESWORTH, M.D.  
TREASURER.—H. HAYES NEWINGTON, F.R.C.P.Ed.  
EDITORS OF JOURNAL. { HENRY RAYNER, M.D.  
                                  A. R. URQUHART, M.D.  
                                  CONOLLY NORMAN, F.R.C.P.I.  
ASSISTANT EDITORS. { JAMES CHAMBERS, M.D.  
(Not Members of Council.) } JOHN R. LORD, M.B.  
AUDITORS. { E. B. WHITCOMBE, M.R.C.S.  
                  H. GARDINER HILL, M.R.C.S.  
DIVISIONAL SECRETARY FOR SOUTH-EASTERN DIVISION.—A. N. BOYCOTT, M.D.  
DIVISIONAL SECRETARY FOR SOUTH-WESTERN DIVISION.—P. W. MACDONALD, M.D.  
DIVISIONAL SECRETARY FOR NORTHERN AND MIDLAND DIVISION.  
                                  BEDFORD PIERCE, M.D.  
DIVISIONAL SECRETARY FOR SCOTLAND.—LEWIS C. BRUCE, M.D.  
DIVISIONAL SECRETARY FOR IRELAND.—W. R. DAWSON, M.D.  
GENERAL SECRETARY.—ROBERT JONES, M.D., B.S., F.R.C.S.  
SECRETARY OF EDUCATIONAL COMMITTEE.—C. A. MERCIER, M.B. (appointed by  
Educational Committee, but with seat on Council).  
REGISTRAR.—ALFRED MILLER, M.B.

MEMBERS OF COUNCIL.

T. S. ADAIR, M.D.	1901.	G. BRAINE-HARTNELL, L.R.C.P. 1902.
THEO. B. HYSLOP, M.D.	"	MAURICE CRAIG, M.D. "
H. A. KIDD, M.R.C.S.	"	DAVID YELLOWLEES, M.D. "
R. L. RUTHERFORD, M.D.	"	R. J. LEGGE, M.D. 1903.
J. BEVERIDGE SPENCE, M.D.	"	T. CLAYE SHAW, M.D. "
A. R. TURNBULL, M.B.	"	H. C. MACBRYAN, L.R.C.P.&S. "
R. C. STEWART, M.B.	1902.	F. R. P. TAYLOR, M.D. "
F. W. MOTT, M.D.	"	ROBERT B. CAMPBELL, M.B. "
A. D. O'C. FINEGAN, L.R.C.P.I.	"	M. J. NOLAN, L.R.C.P.I. "

[The above form the Council.]

EXAMINERS.

ENGLAND	{	THEO. B. HYSLOP, M.D.
		EDWIN GOODALL, M.D.
SCOTLAND	{	JOHN CARSWELL, L.R.C.P.
		W. A. PARKER, M.B.
IRELAND	{	M. J. NOLAN, L.R.C.P.I.
		THOS. DRAPES, M.B.

Examiners for the Nursing Certificate of the Association :  
C. MERCIER, M.B.; J. B. SPENCE, M.D.; J. CARLYLE JOHNSTONE, M.D.

PARLIAMENTARY COMMITTEE.

<p>FLETCHER BEACH (Secretary).</p> <p>H. BENHAM. G. F. BLANDFORD. DAVID BOWER. D. M. CASSIDY. T. S. CLOUSTON. A. D. O'C. FINEGAN. H. GARDINER HILL. C. K. HITCHCOCK. T. B. HYSLOP. J. CARLYLE JOHNSTONE. ROBERT JONES. H. ROOKE LEY. J. G. McDOWALL. C. MERCIER.</p>	<p>H. HAYES NEWINGTON (Chairman).</p> <p>CONOLLY NORMAN. EVAN POWELL. H. RAYNER. G. H. SAVAGE. T. CLAYE SHAW. R. PERCY SMITH. J. B. SPENCE. A. H. STOCKER. D. G. THOMPSON. L. A. WEATHERLY. E. B. WHITCOMBE. ERNEST W. WHITE. J. WIGLESWORTH. OSCAR WOODS. D. YELLOWLEES.</p>
--	---

## EDUCATIONAL COMMITTEE.

FLETCHER BEACH.	H. RAYNER.
HARRY A. BENHAM.	E. C. ROGERS.
T. S. CLOUSTON.	J. RORIE.
MAURICE CRAIG.	G. H. SAVAGE.
J. G. HAVELOCK.	T. CLAYE SHAW.
T. B. HYSLOP.	R. PERCY SMITH ( <i>Chairman</i> ).
J. CARLYLE JOHNSTONE.	J. B. SPENCE.
ROBERT JONES.	A. R. TURNBULL.
W. S. KAY.	L. A. WEATHERLY.
P. W. MACDONALD.	E. B. WHITCOMBE.
S. R. MACPHAIL.	ERNEST W. WHITE.
T. W. McDOWALL.	J. R. WHITWELL.
C. MERCIER ( <i>Secretary</i> ).	J. WIGLESWORTH.
W. F. MICKLE.	J. KENNEDY WILL.
G. W. MOULD.	OSCAR T. WOODS.
H. HAYES NEWINGTON.	D. YELLOWLEES, and
CONOLLY NORMAN.	THE PRESIDENT.

## LIST OF CHAIRMEN.

1841. Dr. Blake, Nottingham.  
 1842. Dr. de Vitré, Lancaster.  
 1843. Dr. Conolly, Hanwell.  
 1844. Dr. Thurnam, York Retreat.  
 1847. Dr. Wintle, Warneford House, Oxford.  
 1851. Dr. Conolly, Hanwell.  
 1852. Dr. Wintle, Warneford House.

## LIST OF PRESIDENTS.

1854. A. J. Sutherland, M.D., St. Luke's Hospital, London.  
 1855. J. Thurnam, M.D., Wilts County Asylum.  
 1856. J. Hitchman, M.D., Derby County Asylum.  
 1857. Forbes Winslow, M.D., Sussex House, Hammersmith.  
 1858. John Conolly, M.D., County Asylum, Hanwell.  
 1859. Sir Charles Hastings, D.C.L.  
 1860. J. C. Bucknill, M.D., Devon County Asylum.  
 1861. Joseph Lalor, M.D., Richmond Asylum, Dublin.  
 1862. John Kirkman, M.D., Suffolk County Asylum.  
 1863. David Skae, M.D., Royal Edinburgh Asylum.  
 1864. Henry Munro, M.D., Brook House, Clapton.  
 1865. Wm. Wood, M.D., Kensington House.  
 1866. W. A. F. Browne, M.D., Commissioner in Lunacy for Scotland.  
 1867. C. A. Lockhart Robertson, M.D., Haywards Heath Asylum.  
 1868. W. H. O. Sankey, M.D., Sandywell Park, Cheltenham.  
 1869. T. Laycock, M.D., Edinburgh.  
 1870. Robert Boyd, M.D., County Asylum, Wells.  
 1871. Henry Maudsley, M.D., The Lawn, Hanwell.  
 1872. Sir James Coxe, M.D., Commissioner in Lunacy for Scotland.  
 1873. Harrington Tuke, M.D., Manor House, Chiswick.  
 1874. T. L. Rogers, M.D., County Asylum, Rainhill.  
 1875. J. F. Duncan, M.D., Dublin.  
 1876. W. H. Parsey, M.D., Warwick County Asylum.  
 1877. G. Fielding Blandford, M.D., London.  
 1878. Sir J. Crichton-Browne, M.D., Lord Chancellor's Visitor.  
 1879. J. A. Lush, M.D., Fisherton House, Salisbury.  
 1880. G. W. Mould, M.R.C.S., Royal Asylum, Cheadle.  
 1881. D. Hack Tuke, M.D., London.  
 1882. Sir W. T. Gairdner, M.D., Glasgow.

1883. W. Orange, M.D., State Criminal Lunatic Asylum, Broadmoor.  
 1884. Henry Rayner, M.D., County Asylum, Hanwell.  
 1885. J. A. Eames, M.D., District Asylum, Cork.  
 1886. Geo. H. Savage, M.D., Bethlem Royal Hospital.  
 1887. Fred. Needham, M.D., Barnwood House, Gloucester.  
 1888. T. S. Clouston, M.D., Royal Edinburgh Asylum.  
 1889. H. Hayes Newington, M.R.C.P., Ticehurst, Sussex.  
 1890. David Yellowlees, M.D., Gartnavel Asylum, Glasgow.  
 1891. E. B. Whitcombe, M.R.C.S., City Asylum, Birmingham.  
 1892. Robert Baker, M.D., The Retreat, York.  
 1893. J. Murray Lindsay, M.D., County Asylum, Derby.  
 1894. Conolly Norman, F.R.C.P.I., Richmond Asylum, Dublin.  
 1895. David Nicolson, M.D., C.B., New Law Courts, Strand, W.C.  
 1896. William Julius Mickle, M.D., Grove Hall Asylum, Bow.  
 1897. Thomas W. McDowall, M.D., Morpeth, Northumberland.  
 1898. A. R. Urquhart, M.D., James Murray's Royal Asylum, Perth.  
 1899. J. B. Spence, M.D., Burntwood Asylum, nr. Lichfield, Staffordshire.  
 1900. Fletcher Beach, M.B., 79, Wimpole Street, W.  
 1901. Oscar T. Woods, M.D., District Asylum, Cork, Ireland.  
 1902. J. Wigglesworth, M.D., F.R.C.P., Rainhill Asylum, near Liverpool.  
 1903. Ernest W. White, M.B., City of London Asylum, Dartford, Kent.

#### HONORARY MEMBERS.

1896. Allbutt, T. Clifford, M.D., F.R.C.P., Regius Professor of Physic, Univ. Camb., St. Radegund's, Cambridge.  
 1881. Benedikt, Prof. M., Franciskaner Platz 5, Vienna.  
 1900. Blumer, G. Alder, M.D., L.R.C.P.Edin., Butler Hospital, Providence, U.S.A. (*Ord. Mem.*, 1890.)  
 1900. Bresler, Johannes, M.D., Kraschnitz, Schlesien, Germany. (*Corr. Mem.*, 1896.)  
 1881. Brosius, Dr., Bendorf-Sayn, near Coblenz, Germany.  
 1876. Browne, Sir J. Crichton-, M.D.Edin., F.R.S., Lord Chancellor's Visitor, New Law Courts, Strand, W.C. (**PRESIDENT**, 1878.)  
 1902. Brush, Edward N., M.D., Sheppard and Enoch Pratt Hospital, Towson, Maryland, U.S.A.  
 1887. Chapin, John B., M.D., Pennsylvania Hospital for the Insane, Philadelphia, U.S.A.  
 1902. Coupland, Sidney, M.D., F.R.C.P.Lond., Commissioner in Lunacy, 16, Queen Anne Street, Cavendish Square, London, W.  
 1872. } Courtenay, E. Maziere, A.B., M.B., C.M.T.C.D., M.D., Inspector of  
 1891. } Lunatics in Ireland, Lunacy Office, Dublin Castle. (*Secretary for Ireland*, 1876-87.)  
 1879. Echeverria, M. G., M.D.  
 1865. Falret, Jules, M.D., 114, Rue de Bac, Paris.  
 1892. Féré, Dr. Charles, 37, Boulevard St. Michel, Paris.  
 1895. Ferrier, David, M.D., 34, Cavendish Square, London.  
 1872. Fraser, John, M.B., C.M., F.R.C.P.E., Commissioner in Lunacy, 19, Strathearn Road, Edinburgh.  
 1868. } Gairdner, Sir William T., K.C.B., M.D.Edin., F.R.S., formerly Professor  
 1888. } of Medicine in the University of Glasgow, Physician to H.M. the King in Scotland, 32, George Square, Edinburgh. (**PRESIDENT**, 1882.)  
 1898. Hine, George T., F.R.I.B.A., 35, Parliament Street, London, S.W.  
 1881. Hughes, C. H., M.D., St. Louis, Missouri, United States.

*Honorary and Corresponding Members.*

1866. Laehr, H., M.D., Schweizer Hof, bei Berlin, Editor of the *Zeitschrift für Psychiatrie*.
1887. Lentz, Dr., Asile d'Aliénés, Tournai, Belgique.
1898. MacDonald, A. E., M.D., Manhattan Asylum, New York, U.S.A.
1898. Magnan, V., M.D., Asile de Ste. Anne, Paris.
1866. } Mitchell, Sir Arthur, M.D.Aberd., LL.D., K.C.B., late Commissioner in  
1871. } Lunacy for Scotland; 34, Drummond Place, Edinburgh.
1897. Morel, M. Jules, M.D., States Lunatic Asylum, Mons, Belgium.
1890. Motet, M., 161, Rue de Charonne, Paris.
1889. Needham, Frederick, M.D.St. And., M.R.C.P.Edin., M.R.C.S.Eng.,  
Commissioner in Lunacy, 19, Campden Hill Square, Kensington,  
W. (PRESIDENT, 1887.)
1891. O'Farrell, Sir G. P., M.D., M.Ch.Univ. Dubl., Inspector of Lunatics in  
Ireland, 19, Fitzwilliam Square, Dublin.
1881. Peeters, M., M.D., Gheel, Belgium.
1878. Pitman, Sir Henry A., M.D.Cantab., F.R.C.P.Lond., Registrar of the  
Royal College of Physicians, Enfield, Middlesex.
1900. Ritti, Ant., Maison Nationale de Charenton, St. Maurice, Paris. (*Corr.  
Mem.*, 1890.)
1886. Roussel, M. Théophile, M.D., Sénateur, Paris.
1887. Schüle, Heinrich, M.D., Illenau, Baden, Germany.
1880. Sibbald, Sir John, M.D.Edin., F.R.C.P.Edin., M.R.C.S.Eng., Commis-  
sioner in Lunacy for Scotland; 18, Great King Street, Edinburgh.  
(*Editor of Journal*, 1871-2.)
1888. Stearns, H. P., M.D., The Retreat, Hartford, Conn., U.S.A.
1881. Tamburini, A., M.D., Reggio-Emilia, Italy.
1901. Toulouse, Dr. Edouard, Directeur du Laboratoire de Psychologie experi-  
mentale à l'Ecole des Hautes Etudes Paris et Médecin en chef de  
l'Asile de Villejuif, Seine, France.

**CORRESPONDING MEMBERS.**

1896. Bianchi, Prof. Leonardo, Manicomio Provinciale di Napoli.
1897. Buschan, Dr. G., Stettin, Germany.
1896. Cowan, F. M., M.D., 107, Perponcher Straat, The Hague, Holland.
1902. Estense, Benedetto Giovanni Selvatico, M.D., 116, Piazza Porta Pia, Rome.
1880. Kornfeld, Dr. Hermann, Gleiwitz, Silesia, Germany.
1889. Kowalowsky, Professor Paul, Kharkoff, Russia.
1895. Lindell, Emil Wilhelm, M.D., Sweden.
1901. Manheimer-Gommès, Dr., 32, Rue de l'Arcade, Paris.
1897. Näcke, Dr. P., Hubertusberg Asylum, Leipzig.
1886. Parant, M. Victor, M.D., Toulouse.
1890. Régis, Dr. E., 54, Rue Huguerie, Bordeaux.
1893. Semelaigne, Dr. René, Secrétaire des Séances de la Société Médico-  
Psychologique de Paris, 16, Avenue de Madrid, Neuilly, Seine, France.

## MEMBERS OF THE ASSOCIATION.

*Alphabetical List of Members of the Association, with the year in which they joined. The Asterisk means Members who joined between 1841 and 1855.*

1900. Abbott, Arthur J., M.D., B.Ch., B.A.O., T.C.Dublin, Hants County Asylum, Fareham.
1900. Abbott, Henry Kingsmill, M.D.Dublin, D.P.H.Ireland. Hants County Asylum, Fareham.
1891. Adair, Thomas Stewart, M.D., C.M.Edin., Assistant Medical Officer and Pathologist, Wadsley Asylum, near Sheffield.
1874. Adam, James, M.D.St. And., West Malling, Kent.
1868. Adams, Josiah O., M.D.Durh., F.R.C.S.Eng., Brooke House, Upper Clapton, London.
1880. Agar, S. H., sen., L.R.C.P.I., Glendossil, Henley-in-Arden.
1886. Agar, S. Hollingsworth, jun., B.A.Cantab., M.R.C.S., Glendossil, Henley-in-Arden.
1901. Ahern, John M., M.B., B.Ch., L.R.C.P.&S.I., Assistant Medical Officer, H.M. Prison, Liverpool.
1869. Aldridge, Chas., M.D.Aber., L.R.C.P., Plympton House, Plympton, Devon.
1899. Alexander, Hugh de Maine, M.D., The Hospital, Royal Asylum, Aberdeen.
1890. Alexander, Robert Reid, M.D.Aber., Medical Superintendent, Hanwell Lunatic Asylum.
1882. Alliot, A. J., M.D., Rosendal, Sevenoaks.
1899. Allmann, Dorah Elizabeth, M.B., B.Ch., B.A.O.R.U.I., Assistant Medical Officer, District Asylum, Armagh.
1885. Amsden, Geo., M.B., Medical Supt., County Asylum, Brentwood, Essex.
1901. Anderson, William C., M.B., C.M., Fife and Kinross District Asylum, Cupar, Fife.
1894. Andriezen, W. Lloyd, M.D.Lond., 7, Apsley Terrace, Acton, W.
1894. Angus, Charles, M.B., C.M., Medical Superintendent, Kingseat Asylum, Newmachar, Aberdeen, N.B.
1892. Atherstone, Walter H., M.D., Surgeon-Superintendent, Port Alfred Asylum, South Africa.
1891. Aveline, Henry T. S., M.R.C.S., L.R.C.P., M.P.C., Medical Superintendent, County Asylum, Cotford, near Taunton, Somerset.
1903. Bailey, William Henry, M.B., M.R.C.S., L.S.A., Featherstone Hall, Southall, Midd.
1894. Baily, Percy J., M.B.Edin., Senior Assistant Medical Officer, London County Asylum, Hanwell, W.
1878. Baker, H. Morton, M.B.Edin., Assistant Medical Officer, Leicester Borough Asylum, Humberstone, Leicester.
1888. Baker, John, M.D., Deputy Superintendent, State Asylum, Broadmoor, Berks.
1876. Baker, Robert, M.D.Edin., Braefort, Crookston, Paisley, N.B. (PRESIDENT, 1892.)
1901. Barnett, Horatio, M.B., B.C.Cantab., M.R.C.S., L.R.C.P.Lond., Medical Superintendent, Stretton House, Church Stretton, Salop.
1895. Barraclough, Herbert, M.B., The Asylum, Porirua, nr. Wellington, New Zealand.
1878. Barton, James Edward, L.R.C.P.Edin., L.M., M.R.C.S., Medical Superintendent, Surrey County Lunatic Asylum, Brookwood, Woking.
1901. Baskin, J. Lougheed, L.R.C.P.&S.Edin., L.F.P.S.Glas., Assistant Medical Officer, County Asylum, Exminster, Devon.
1902. Bangh, Leonard D. H., M.B., C.M., District Asylum, Larbert, Stirling, N.B.
1864. Bayley, Joseph, M.R.C.S., Medical Superintendent, St. Andrew's Hospital, Northampton.
1893. Bayley, Joseph Herbert, M.B., C.M.Edin., Assistant Medical Officer, St. Andrew's Hospital, Northampton.

1874. Beach, Fletcher, M.B., F.R.C.P.Lond., formerly Medical Superintendent, Darenth Asylum, Dartford; Winchester House, Kingston Hill, Surrey, and 79, Wimpole Street, W. (*General Secretary*, 1889—1896. *PRESIDENT*, 1900—1901.)
1892. Beadles, Cecil F., M.R.C.S., L.R.C.P., Assistant Medical Officer, Colney Hatch Asylum.
1902. Beale-Browne, Thomas Richard, M.R.C.S.Eng., L.R.C.P.Lond., Berrywood, Northampton.
1896. Beamish, George, L.R.C.S.I., L.R.C.P.E., L.M., Medical Officer's House, H.M. Prison, Wandsworth, London, S.W.
1881. Benham, Harry A., M.D., Medical Superintendent, City and County Asylum, Stapleton, near Bristol.
1899. Beresford, Edwyn H., M.R.C.S. & M.R.C.P.Lond., Tooting Bee Asylum, Tooting, S.W.
1894. Bernard, Walter, M.D., F.R.C.P.I., M.R.C.S.Eng., 14, Queen Street, Londonderry.
1894. Blachford, James Vincent, M.D., B.S.Durham, Assistant Medical Officer, Bristol Asylum, Fishponds, near Bristol.
1898. Blair, David, M.A., M.D., C.M., County Asylum, Lancaster.
1888. Blair, Robert, M.D., Braefort, Crookston, Paisley.
1901. Blake, Thomas Frederick Hillyer, L.R.C.P.&S.Edin., Wakefield Road, Ackworth Moor Top, near Pontefract, Yorks.
1902. Blakiston, Frederick C., M.R.C.S., L.R.C.P., 6, Leigham Street, Plymouth, Devon.
1857. Blandford, George Fielding, M.D.Oxon., F.R.C.P.Lond., 48, Wimpole Street, W. (*PRESIDENT*, 1877.)
1897. Blandford, Joseph John Guthrie, B.A., D.P.H.Camb., M.R.C.S.Eng., L.R.C.P.Lond., Assistant Medical Officer, County Asylum, Whittingham, Preston, Lancs.
1888. Blaxland, Herbert, M.R.C.S., Medical Superintendent, Callan Park Asylum, New South Wales.
1900. Bolton, Joseph Shaw, M.D., B.S., B.Sc.Lond., East Sussex Asylum, Hellingly.
1892. Bond, Charles Hubert, D.Sc., M.D., Ch.M.Edin., Medical Superintendent, The Colony, Ewell, Surrey.
1877. Bower, David, M.D.Aber., Springfield House, Bedford.
1877. Bowes, John Ireland, M.R.C.S.Eng., L.S.A., Medical Superintendent, County Asylum, Devizes, Wilts.
1893. Bowes, William Henry, M.D.Lond., Assistant Medical Officer, Plymouth Borough Asylum, Ivybridge, Devon.
1900. Bowles, Alfred, M.R.C.S., L.R.C.P., 10, South Cliff, Eastbourne.
1896. Boycott, Arthur N., M.D.Lond., M.R.C.S.Eng., L.R.C.P.Lond., Medical Superintendent, Herts County Asylum, Hill End, St. Albans, Herts.
1898. Boyle, A. Helen A., M.D., 3, Palmeira Terrace, Hove, Brighton.
1883. Boys, A. H., L.R.C.P.Edin., Chequer Lawn, St. Albans.
1891. Braine-Hartnell, George, M. P., L.R.C.P.Lond., M.R.C.S.Eng., Medical Superintendent, County and City Asylum, Powick, Worcester.
1893. Bramwell, John Milne, M.B., C.M.Edin., 15, Stratford Place, Oxford Street, W.
1881. Brayn, R., L.R.C.P.Lond., Medical Superintendent, Broadmoor Asylum, Crowthorne, Berks.
1895. Briscoe, John Frederick, M.R.C.S.Eng., Resident Medical Superintendent, Westbrooke House Asylum, Alton, Hants.
1892. Bristowe, Hubert Carpenter, M.D.Lond., Wrington, R.S.O., Somerset.
1903. Broom, Henry, M.B., C.M.Glas., County Asylum, Dorchester, Dorset.
1893. Bruce, Lewis C., M.D.Edin., Druid Park, Murthly, N.B.



- \* Brushfield, Thomas N., M.D.St. And., The Cliff, Budleigh Salterton, Devon.
- 1896. Bubb, William, M.R.C.S., L.R.C.P.Lond., Second Assistant Medical Officer, Worcester County Asylum, Powick, near Worcester.
- 1892. Bullen, Frederick St. John, M.R.C.S.Eng., 12, Pembroke Road, Clifton, Bristol.
- 1869. Burman, Wilkie J., M.D.Edin., Ramsbury, Hungerford, Berks.
- 1891. Caldecott, Charles, M.B., B.S.Lond., M.R.C.S., Medical Superintendent, Earlswood Asylum, Redhill, Surrey.
- 1889. Callcott, J. T., M.D., Medical Superintendent, Borough Asylum, Newcastle-on-Tyne.
- 1874. Cameron, John, M.D.Edin., Medical Superintendent, Argyll and Bute Asylum, Lochgilphead.
- 1902. Camparole, Paul Clem, M.B., C.M.Ed., Junior Assistant Medical Officer, County Asylum, Melton, Suffolk.
- 1894. Campbell, Alfred Walter, M.D.Edin., Pathologist, County Asylum, Rainhill, near Prescott, Lancashire.
- 1880. Campbell, P. E., M.B., C.M., Senior Assistant Medical Officer, District Asylum, Caterham.
- 1897. Campbell, Robert Brown, M.B., C.M.Edin., Assistant Medical Officer, Crichton Royal Institution, Dumfries, N.B.
- 1897. Cappe, Herbert Nelson, M.R.C.S.Eng., L.R.C.P.Lond., Assistant Medical Officer, Surrey County Asylum, Brookwood.
- 1891. Carswell, John, L.R.C.P.Edin., L.F.P.S.Glasg., Certifying Medical Officer, Barony Parish, 5, Royal Crescent, Glasgow.
- 1896. Cashman, James P., M.B., B.Ch., B.A.O.Royal Univ. Irel., Assistant Medical Officer, Cork District Asylum.
- 1902. Cassells, Alexander Henderson, M.B., Ch.B.Glasg., Senior Assistant Medical Officer, District Asylum, Sunnyside, Montrose.
- 1874. Cassidy, D. M., M.D., C.M.McGill Coll., Montreal, D.Sc. (Public Health) Edin., F.R.C.S.Edin., Medical Superintendent, County Asylum, Launceston.
- 1888. Chambers, James, M.D., The Priory, Roehampton.
- 1865. Chapman, Thomas Algernon, M.D.Glas., L.R.C.S.Edin., Betula, Reigate.
- 1880. Christie, J. W. Stirling, L.R.C.P.Edin., Medical Superintendent, County Asylum, Stafford.
- 1878. Clapham, Wm. Crochley S., M.D., M.R.C.P., The Gables, Mayfield, Sussex.
- 1879. Clarke, Henry, M.D.Durh., L.R.C.P.Lond., H.M. Prison, Wakefield.
- 1901. Cleland, William Lennox, M.B., B.Ch.Edin., Park Side, Adelaide, South Australia.
- 1862. Clouston, T. S., M.D.Edin., F.R.C.P.Edin., F.R.S.E., Physician Superintendent, Royal Asylum, Morningside, Edinburgh. (*Editor of Journal*, 1873—1881.) (PRESIDENT, 1888.)
- 1900. Coffey, Patrick, L.R.C.P.&S.I., District Asylum Limerick, Ireland.
- 1892. Cole, Robert Henry, M.D.Lond., M.R.C.P.Lond., 48, Upper Berkeley Street, W.
- 1900. Cole, Sydney John, M.A., M.D., B.Ch.Oxon., Wilts County Asylum, Devizes.
- 1896. Coles, Richard Ambrose, M.B., The Grove, Barham, near Canterbury.
- 1902. Collie, Robert John, M.D., Assistant Medical Officer School Board for London, for Mentally Deficient Children, 25, Porchester Terrace, Hyde Park, W.
- 1903. Collins, Michael Abdy, M.B., B.S., M.R.C.S. & P.Lond., London County Asylum, Bexley, Kent.
- 1888. Cones, John A., M.R.C.S., Burgess Hill, Sussex.
- 1895. Conry, John, M.D.Aber., Fort Beaufort Asylum, South Africa.

1878. Cooke, Edward Marriott, M.D., M.R.C.S.Eng., Commissioner in Lunacy, 69, Onslow Square, S.W.
1899. Cooke, J. A., M.R.C.S., L.R.C.P., Medical Officer and Co-Licencee, Tue Brook Villa, near Liverpool.
1902. Cooke, William Arthur, L.R.C.P.&S.I., Assistant Medical Officer, St. Patrick's Hospital, Dublin.
1903. Cormac, Harry Dove, M.B., B.S.Madras, Wilts County Asylum, Devizes.
1891. Corner, Harry, M.D.Lond., M.R.C.S., L.R.C.P., M.P.C., Brooke House, Southgate, N.
1897. Cotton, William, M.A., M.D.Edin., D.P.H.Cantab., 231, Gloucester Road, Bishopston, Bristol.
1893. Cowen, Thomas Philip, M.D., B.S.Lond., Assistant Medical Officer, County Asylum, Lancaster.
1899. Cowper, Alfred, M.A., M.B., C.M.Edin., Valkenburg Asylum, Mowbray, Cape Town.
1884. Cox, L. F., M.R.C.S., Medical Superintendent, County Asylum, Denbigh.
1878. Craddock, F. H., M.A.Oxon., M.R.C.S.Eng., L.S.A., Medical Superintendent, County Asylum, Gloucester.
1893. Craig, Maurice, M.A., M.D., B.C.Cantab., M.R.C.P.Lond., Assistant Medical Officer, Bethlem Royal Hospital, Southwark.
1897. Cribb, Harry Gifford, M.R.C.S.Eng., L.R.C.P.Lond., Assistant Medical Officer, London County Asylum, Cane Hill, Surrey.
1898. Crookshank, F. G., M.D.Lond., M.R.C.S., L.R.C.P., 27, The Terrace, Barnes, S.W.
1894. Cullinan, Henry M., L.R.C.P.I., L.R.C.S.I., Senior Assistant Medical Officer, Richmond District Asylum, Dublin.
1902. Curran, Michael, M.A., M.B., B.Ch., B.U.I., 35, Harcourt Street, Dublin
1869. Daniel, W. C., M.D.Heidelb., M.R.C.S.Eng., Epsom, Surrey.
1899. Daunt, Elliot, M.R.C.S., L.R.C.P., D.P.H., Rosendal, Sevenoaks, Kent.
1896. Davidson, Andrew, M.D., C.M.Aber., Callan Park, Sydney, N.S.W.
1874. Davies, Francis P., M.D.Edin., M.R.C.S.Eng., Kent County Asylum, Barming Heath, near Maidstone.
1891. Davis, Arthur N., L.R.C.P., L.R.C.S.Edin., Medical Superintendent, County Asylum, Exminster, Devon.
1894. Dawson, William R., M.D., B.Ch.Dubl., F.R.C.P.I., Medical Superintendent, Farnham House Asylum, Finglas, Dublin.
1869. Deas, Peter Maury, M.B. and M.S.Lond., Medical Superintendent, Wonford House, Exeter.
1900. Despard, Rosina C., M.D.Lond., Holloway Sanatorium, Virginia Water, Surrey.
1883. De Lisle, Samuel Ernest, L.R.C.P., L.R.C.S.I., Three Counties Asylum, Stotfold, Herts.
1901. De Steiger, Adèle, M.B.Lond., County Asylum, Brentwood, Essex.
1876. Dickson, F. K., F.R.C.P.Edin., Wye House Lunatic Asylum, Buxton, Derbyshire.
1903. Dickson, Thomas Graeme, L.R.C.P. & S.Edin., Assistant Superintendent, Wye House, Buxton.
1902. Dixon, Harry Livesay, M.A., M.B., B.C., D.P.H.Cantab., Senior Assistant Medical Officer, County Asylum, Mickleover, Derby.
1879. Dodds, William J., M.D., D.Sc.Edin., Valkenburg, Mowbray, near Cape Town, South Africa.
1886. Donaldson, Robert Lockhart, B.A., M.D., B.Ch.Univ. of Dubl., M.P.C., Senior Medical Officer, District Asylum, Monaghan.
1889. Donaldson, William Ireland, B.A., M.D., B.Ch.Univ. of Dubl., Medical Superintendent, Horton Manor Asylum, Epsom, Surrey.

*Members of the Association.*

1892. Donelan, John O'Connor, L.R.C.P.I., L.R.C.S.I., M.P.C., First Assistant Medical Officer, Portraue Asylum, Donabate, co. Dublin.
1899. Donelan, Thomas O'Connor, L.R.C.P. & L.R.C.S.Ireland, Menston Asylum, near Leeds.
1891. Douglas, Archibald Robertson, L.R.C.S., L.R.C.P.Edin., Royal Albert Asylum, Lancaster.
1890. Douglas, William, M.D.Queen's Univ. Irel., M.R.C.S.Eng., Brandfold, Goudhurst.
1897. Dove, Emily Louisa, M.B.Lond., Denstone College, Staffordshire.
1903. Dow, William Alex., M.D.Durh., M.R.C.S.&P.Lond., H.M. Prison, Lewes.
1884. Drapes, Thomas, M.B., Medical Superintendent, District Asylum, Ennis-corthy, Ireland.
1902. Dudgeon, Herbert Wm., M.D.Durh., M.R.C.S.Eng., L.R.C.P.Lond., Medical Officer to the Egyptian Asylum, Abassieh, Cairo, Egypt.
1899. Dudley, Francis, L.R.C.P.&S.I., Senior Assistant Medical Officer, County Asylum, Bodmin, Cornwall.
1903. Dunston, John Thomas, M.D., B.S.Lond., Assistant Medical Officer, Bexley Asylum, Kent.
1899. Eades, Albert I., L.R.C.P. & S.I., County Asylum, Winwick, Warrington, Lancs.
1903. Eady, George John, M.D., M.R.C.P.Edin., M.R.C.S.Eng., Juglans Lodge, Enfield, Middlesex.
1874. Eager, Reginald, M.D.Lond., M.R.C.S.Eng., Northwoods, near Bristol.
1873. Eager, Wilson, L.R.C.P.Lond., M.R.C.S.Eng., Northwoods, Winterbourne, Bristol.
1881. Earle, Leslie, M.D.Edin., 108, Gloucester Terrace, Hyde Park, W.
1891. Earls, James Henry, M.D., M.Ch., 71, Brighton Square, Dublin.
1903. East, Guy Rowland, M.B.Durh., Northumberland County Asylum, Morpeth.
1895. Easterbrook, Charles C., M.A., M.D., M.R.C.P.Ed., Medical Superintendent, Ayr District Asylum, Glengall, Ayr, N.B.
1895. Edgerley, Samuel, M.D., M.A., C.M.Edin., Assistant Medical Officer, West Riding Asylum, Menston, nr. Leeds.
1900. Edridge-Green, F. W., M.D., F.R.C.S., 14, Welbeck Street, W., and Hendon Grove, Hendon, N.W.
1902. Edwards, Charles, M.B.C.S., L.R.C.P., 104, Shooter's Hill Road, Blackheath, Kent.
1897. Edwards, Francis Henry, M.D.Bru.x., M.R.C.P.Lond., Medical Superintendent, Camberwell House, S.E.
1889. Elkins, Frank Ashby, M.D., Medical Superintendent, Metropolitan Asylum, Leavesden.
1898. Ellerton, Henry B., M.R.C.S., L.R.C.P., Leavesden Asylum, King's Langley R.S.O., Herts.
1873. Elliot, G. Stanley, M.R.C.P.Edin., F.R.C.S.Edin., 16, Killieser Avenue, Streatham Hill, S.W.
1890. Ellis, William Gilmore, M.D.Bru.x., Superintendent, Government Asylum, Singapore.
1899. Ellison, F. C., M.D., B.Ch., T.C.D., Assistant Medical Officer, District Asylum, Castlebar.
1901. Elsworth, T. G., M.B., C.M.Edin., Senior Assistant Medical Officer, County and City Asylum, Hereford.
1901. Erskine, Wm. J. A., M.D., C.M., Senior Assistant Medical Officer, City Asylum, Nottingham.
1895. Erich, Frederick Wilhelm, M.D., C.M.Edin., 7, Lindum Terrace, Bradford, Yorks.
1894. Eustace, Henry Marcus, M.D., B.Ch., B.A.T.C.D. Assistant Physician, Hampstead and Highfield Private Asylum, Glasnevin, Dublin.

*Members of the Association.*

1903. Evans, Fredk. Hudson, M.R.C.S., L.R.C.P.Lond., Herts County Asylum, Hill End, St. Albans.
1901. Evans, James Wm., M.R.C.S., L.S.A., Lieut.-Col. Indian Medical Service (retired), Tattlebury House, Goudhurst, Kent.
1897. Everett, William, M.D., Assistant Medical Officer, County Asylum, Chart-ham Downs, Kent.
1891. Ewan, John Alfred, M.A., M.D., C.M.Edin., M.P.C., Greylees, Sleaford, Lincolnshire.
1884. Ewart, C. T., M.D., C.M.Aberd., Claybury Asylum, Woodford Bridge, Essex.
1894. Farquharson, William F., M.D.Edin., Medical Superintendent, Counties Asylum, Garlands, Carlisle.
1901. Fee, Wm. George, L.R.C.P. and L.R.C.S.Edin., Assistant Medical Officer, Brooke House, Upper Clapton, N.E.
1903. Fennell, Charles Henry, M.A., M.D.Oxon, M.R.C.P.Lond., Assistant Medical Officer, Darenth Asylum, Kent.
1897. Fielding, James, M.D., Victoria Univ., Canada, M.R.C.S.Eng., L.R.C.P. Edin., Medical Superintendent, Bethel Hospital, Norwich.
1873. Finch, John E. M., M.D., Medical Superintendent, Borough Asylum, Leicester.
1889. Finch, Richard T., B.A., M.B.Cantab., Resident Medical Officer, Fisherton House Asylum, Salisbury.
1867. Finch, W. Corbin, M.R.C.S.Eng., Fisherton House, Salisbury.
1901. Findlay, John, M.B., Ch.B.Aber., Bin View, Cullen, N.B.
1882. Finegan, A. D. O'Connell, L.R.C.P.I., Medical Superintendent, District Asylum, Mullingar, Ireland. (*Hon. Secretary for Ireland.*)
1889. Finlay, David, M.D.Glasg., County Asylum, Bridgend, Glamorgan.
1903. Fitzgerald, Alexis, L.R.C.P. & S.I., L.M., District Asylum, Waterford.
1894. Fitzgerald, Charles E., M.D., F.R.C.S.I., Surgeon-Oculist to the King in Ireland, 27, Upper Merrion Street, Dublin.
1888. Fitz-Gerald, G. C., M.D., B.C.Cantab., M.P.C., Medical Superintendent, Kent County Asylum, Chartham, nr. Canterbury.
1899. Fitzgerald, James J., M.B., B.Ch., B.A.O.R.U.I., Assistant Medical Officer, District Asylum, Carlow.
1901. Fitzgerald, John J., M.D.Bru., L.R.C.P.&S.Edin., Assistant Medical Officer, District Asylum, Cork.
1899. Flemming, A. L., M.R.C.S.Eng., L.R.C.P.Lond., City and County Asylum, Fishponds, Bristol.
1872. Fletcher, Robert Vicars, F.R.C.S.I., L.R.C.P.I., L.R.C.P. Edin., Medical Supt., District Asylum, Ballinasloe, Ireland.
1894. Fleury, Eleonora Lilian, M.D., B.Ch., R.U.I., Assistant Medical Officer, Richmond Asylum, Dublin.
1902. Forde, Michael J., M.D., M.Ch., R.U.I., Assistant Medical Officer, Richmond Asylum, Donabate, Dublin.
1902. Forshaw, Wm. H., M.R.C.S., L.R.C.P.Lond., 131A, Mile End Road, London, E.
1902. Forster, Hermann Julius, L.R.C.P.I., L.S.A., Assistant Medical Officer, Sussex County Asylum, Hayward's Heath.
1861. Fox, Charles H., M.D.St. And., M.R.C.S.Eng., 35, Heriot Row, Edinburgh.
1896. France, Eric, M.B., B.S.Durh., National Provincial Bank of England, St. James' Branch, Piccadilly, W.
1881. Fraser, Donald, M.D., 3, Orr Square, Paisley.
1901. French, Louis Alexander, M.R.C.S., L.R.C.P., Love Lane, Wakefield, Yorks.
1902. Fuller, Lawrence Otway, M.R.C.S.Eng., L.R.C.P.Lond., Assistant Medical Officer, Darenth Asylum, Dartford, Kent.

1898. Garth, Henry C., M.B., C.M.Edin., 4, Harrington Street, Calcutta, India.
1890. Gaudin, Francis Neel, M.R.C.S., L.S.A., M.P.C., Medical Superintendent, The Grove, St. Lawrence, Jersey.
1885. Gayton, Francis C., M.D., Brookwood Asylum, Woking, Surrey.
1896. Geddes, John W., M.B., C.M.Edin., Assistant Medical Officer, Durham County Asylum, Winterton, Ferryhill, Durham.
1892. Gemmel, James Francis, M.B.Glasg., Assistant Medical Officer, County Asylum, Whittingham, Preston.
1889. Gibbon, William, L.R.C.P.I., L.F.P.S.Glasg., Senior Assistant Medical Officer, Joint Counties Asylum, Carmarthen.
1903. Giles, James Alfred, M.B., B.S.Durh., Rainhill Asylum, Lancs.
1899. Gilfillan, Samuel James, M.A., M.B.Edin., London County Asylum, Cane Hill, Purley, Surrey.
1898. Gill, Frank A., M.D., C.M.Aber., Deputy Medical Officer, H.M. Prison, Liverpool.
1889. Gill, Stanley, B.A., M.D., M.R.C.P.Lond., Shaftesbury House, Formby, Lancashire.
1897. Gilmour, John Rutherford, M.B., F.R.C.P.Edin., West Riding Asylum, Scalebor Park, Burley-in-Wharfedale, Yorks.
1901. Glasgow, John George, M.R.C.S.Eng., L.R.C.P.Lond., Assistant Medical Officer, Borough Asylum, Portsmouth.
1878. Glendinning, James, M.D.Glasg., L.R.C.S.Edin., L.M., Medical Superintendent, Joint Counties Asylum, Abergavenny.
1898. Goldie-Scot, Thomas G., M.B., C.M.Edin., M.R.C.S., L.R.C.P., Junior Assistant Physician, Royal Asylum, Gartnavel, Glasgow.
1899. Goldschmidt, Oscar Bernard, M.B., Ch.B.Vict., Bishopstone House, Bedford.
1897. Good, Thomas Saxty, M.R.C.S.Eng., L.R.C.P.Lond., Assistant Medical Officer, County Asylum, Littlemore, Oxford.
1889. Goodall, Edwin, M.D., M.S.Lond., M.P.C., Medical Superintendent, Joint Counties Asylum, Carwarthen.
1899. Goodliffe, John Henry, M.D.Aberd., Finbar House, 802, High Road, Lower Tottenham, N.
1899. Gordon, James Leslie, M.B., Ch.B., Tooting Bec Asylum, Tooting, London, S.W.
- \* Gordon, William S., M.A., M.B., T.C.D., District Asylum, Mullingar.
1901. Gostwyck, C. H. G., M.B., Ch.B., Balhousie Avenue, Perth, N.B.
1899. Graham, Robert A. L., B.A., M.B., B.Ch., R.U.I., Assistant Medical Officer, District Asylum, Belfast.
1894. Graham, Samuel, L.R.C.P.Lond., Assistant Medical Officer, District Asylum, Antrim.
1888. Graham, Thomas, M.D.Glasg., 3, Garthland Place, Paisley.
1887. Graham, W., M.D., R.U.I., Medical Superintendent, District Lunatic Asylum, Belfast.
1890. Gramshaw, Farbrace Sidney, M.D., F.R.C.S.E., L.R.C.P.I., L.R.C.S. Edin., L.M., L.A.H.Dubl., 9, St. Leonard's, York.
1902. Green, Philip A. M., M.R.C.S., L.R.C.P., Assistant Medical Officer, Claybury Asylum, Woodford Bridge, Essex.
1902. Greene, George Watters, M.A., M.B., B.C.Cantab., M.R.C.S., L.R.C.P., Assistant Medical Officer, Claybury Asylum, Woodford Bridge, Essex.
1896. Greene, Thomas Adrian, L.R.C.P., L.R.C.S., Assistant Medical Officer, District Asylum, Ennis, Ireland.
1886. Greenlees, T. Duncan, M.D., Medical Superintendent to the Grahams-town Asylum, Cape of Good Hope.
1894. Griffin, Edward W., M.D., M.Ch., R.U.I., Assistant Medical Officer, The Asylum, Killarney.

1896. Griffiths, George Batho G., M.R.C.S., L.R.C.P.Lond., Assistant Surgeon, H.M. Convict Prison, Parkhurst, Isle of Wight.
1901. Grills, Galbraith Hamilton, M.D., B.Ch., Assistant Medical Officer, County Asylum, Chester.
1900. Grove, Ernest George, M.R.C.S., L.R.C.P., York Lunatic Hospital, Bootham, York.
1894. Gwynn, Charles Henry, M.D.Edin., co-Licencee, St. Mary's House, Whitchurch, Salop.
1879. Gwynn, Samuel T., M.D., St. Mary's House, Whitchurch, Salop.
1894. Halstead, Harold Cecil, M.D.Durh., Assistant Medical Officer, Peckham House, Peckham.
1908. Hanbury, Langton Fuller, M.R.C.S.Eng., L.R.C.P.Lond., West Ham Borough Asylum, Ilford, Essex.
1902. Hanbury, Saville Waldron, M.R.C.S.Eng., L.R.C.P.Lond., Assistant Medical Officer, London County Asylum, Banstead, Surrey.
1896. Hanbury, William Reader, M.R.C.S., L.R.C.P., Senior Assistant Medical Officer, West Ham Borough Asylum, Goodmayes, Ilford.
1903. Hankin, Chella Mary, M.B.Durh., Northumberland County Asylum, Morpeth.
1901. Hannay, Mary Baird, M.B., C.M., Gartloch Asylum, Gartcosh, Glasgow, N.B.
1901. Harding, William, M.D., M.R.C.P.Lond., Medical Superintendent, Northampton County Asylum, Berry Wood, Northampton.
1899. Harmer, W. A., L.S.A., Resident Superintendent and Licensee, Redlands Private Asylum, Tonbridge, Kent.
1897. Harris, William, M.D.St. And., F.R.C.S.Edin., M.R.C.P.Edin., Medical Superintendent, City Asylum, Hellesdon, Norwich.
1898. Harris-Liston, L., M.D., M.R.C.S., L.R.C.P.Lond., L.S.A., City Asylum, Digbys, Exeter.
1886. Harvey, Bagenal Crosbie, L.R.C.P., L.R.C.S., Assistant Medical Officer, District Asylum, Clonmel.
1892. Haslett, William John, M.R.C.S., L.R.C.P., Resident Medical Superintendent, Halliford House, Sunbury-on-Thames.
1891. Havelock, John G., M.D., C.M.Edin., Physician Superintendent, Montrose Royal Asylum.
1890. Hay, Frank, M.B., C.M., Physician Superintendent, Ashburn Hall Asylum, Dunedin, New Zealand.
1900. Haynes, Horace E., M.R.C.S., L.S.A., Bishopstow House, Bedford.
1895. Header, Frederic P., M.D., C.M., Assistant Medical Officer, North Riding Asylum, Clifton, Yorks.
1903. Heffernan, Patrick, M.B., B.Ch., B.A.O., R.U.I., District Asylum, Clonmel, co. Tipperary.
1885. Henley, E. W., M.R.C.S., L.R.C.P., County Asylum, Barnwood, Gloucester.
1899. Herbert, William W., M.D., C.M.Edin., North Wales Counties Asylum, Denbigh, North Wales.
1877. Hetherington, Charles E., M.B., Medical Superintendent, District Asylum, Londonderry, Ireland.
1903. Hewitt, David Walker, M.B., B.Ch., R.U.I., Surgeon R.N., H.M.S. "Goliath," Hong Kong.
1877. Hewson, R. W., L.R.C.P.Edin., Medical Superintendent, Coton Hill, Stafford.
1902. Higginson, John Wigmore, M.R.C.S., L.R.C.P., Resident Medical Officer, Hayes Park Asylum, Hayes Park, Middlesex.
1882. Hill, H. Gardiner, M.R.C.S., Medical Superintendent, Middlesex County Asylum, Tooting.
1900. Hill, J. R., M.R.C.S., L.R.C.P., Fenstanton, Christchurch Road, Streatham Hill, S.W.
1871. Hingston, J. Tregelles, M.R.C.S.Eng., Medical Superintendent, North Riding Asylum, Clifton, Yorks.

1881. Hitchcock, Charles Knight, M.D., Bootham Asylum, York.
1900. Holländer, Bernard, M.D., M.R.C.S. L.R.C.P., 62, Queen Anne Street, London, W.
1908. Hopkins, Charles Leighton, M.B., B.C.Cantab., Assistant Medical Officer, Kent County Asylum, Barming Heath, Maidstone.
1896. Horton, James Henry, M.R.C.S.Eng., L.R.C.P.Lond., Lieut. I.M.S., c/o Messrs. W. Watson & Co., 8, Hornby Road, Bombay.
1894. Hotchkis, Robert D., M.A., M.D., Assistant Physician, Royal Asylum, Glasgow.
1900. Hughes, George Osborne, M.D.Virginia, M.R.C.S., L.R.C.P., 24, Montague Place, Holborn, W.C.
1857. Humphry, John, M.R.C.S.Eng., Medical Superintendent, County Asylum, Stone, near Aylesbury, Bucks.
1897. Hunter, David, M.A., M.B., B.C.Cantab., West Ham Borough Asylum, Goodmayes, Ilford, Essex.
1882. Hyslop, James, D.S.O., M.D., Natal Government Asylum, Pietermaritzburg.
1888. Hyslop, Theo. B., M.D., C.M.Edin., M.R.C.P.E., M.P.C., Bethlem Royal Hospital, S.E.
1871. Ireland, William W., M.D.Edin., 1, Victoria Terrace, Musselburgh, N.B.
1866. Jackson, J. Hughlings, M.D.St. And., F.R.C.P.Lond., F.R.S., Physician to the Hospital for Epilepsy and Paralysis, &c., 3, Manchester Square, London, W.
1903. Johnson, Alice V. V., M.D.Bru.x., Joint Counties Asylum, Carmarthen, South Wales.
1893. Johnston, Gerald Herbert, L.R.C.S. and L.R.C.P.Edin., Beech Lawn, Belper, Derbyshire.
1878. Johnstone, J. Carlyle, M.D., C.M., Medical Superintendent, Roxburgh District Asylum, Melrose.
1903. Johnstone, Thomas, M.D.Edin., M.R.C.P.Lond., Annandale, Ilkley, Yorks.
1880. Jones, D. Johnson, M.D.Edin., Medical Superintendent, Banstead Asylum, Surrey.
1866. Jones, Evan, M.R.C.S.Eng., Ty-mawr, Aberdare, Glamorganshire.
1882. Jones, Robert, M.D.Lond., B.S., F.R.C.S., Medical Superintendent, London County Asylum, Claybury, Woodford, Essex. (*Gen. Secretary from 1897.*)
1897. Jones, Samuel Lloyd, M.R.C.S.Eng., L.R.C.P.Lond., Assistant Medical Officer, London County Asylum, Colney Hatch, N.
1898. Jones, W. Ernest, M.R.C.S.Eng., L.R.C.P.Lond., Brecon and Radnor Asylum, Talgarth, R.S.O.
1897. Jones, William Edward, M.D.Bru.x., 44, Union Street, near Middlesex Hospital, W.
1879. Kay, Walter S., M.D., Medical Superintendent, South Yorkshire Asylum, Wadsley, near Sheffield.
1886. Keay, John, M.D., Medical Superintendent, District Asylum, Inverness.
1899. Keegan, Lawrence Edward, M.D., Medical Superintendent, Lunatic Asylum, St. John's, Newfoundland.
1902. Kelley-Patterson, Wm., M.D., M.Ch., R.U.I., Bally-Emond, Killowen, Dublin.
1898. Kemp, Norah, M.B., C.M.Glas., The Retreat, York.
1899. Kennedy, Hugh T. J., L.R.C.P.&S.I., L.M., Assistant Medical Officer, District Asylum, Enniscorthy, Wexford.
1902. Kennedy, Patrick Gabriel, L.R.C.P.&S.Edin., L.F.P.S.Glasg., Assistant Medical Officer, London County Asylum, Banstead, Surrey.
1897. Kerr, Hugh, M.A., M.D.Glasg., Assistant Medical Officer, Bucks County Asylum, Stone, Aylesbury, Bucks.
1902. Kerr, Neil Thomson, M.B., C.M.Ed., Medical Superintendent, Lanark District Asylum, Hartwood, Shotts, N.B.

1893. Kershaw, Herbert Warren, M.R.C.S.Eng., L.R.C.P.Lond., Dinsdale Park, near Darlington.
1897. Kidd, Harold Andrew, M.R.C.S.Eng., L.R.C.P.Lond., Medical Superintendent, West Sussex Asylum, Chichester.
1903. King, Frank Raymond, B.A.Cantab., M.R.C.S.Eng., L.R.C.P.Lond., Medical Superintendent, Northumberland House, Finsbury Park, N.
1897. Kingdon, Wilfred Robert, M.B., B.S.Durh., 55, Haverstock Hill, London, N.W.
1903. Kingsford, Arthur Beresford, M.R.C.S., L.R.C.P.Lond., D.P.H.Camb., 11, Burwood Place, Hyde Park, W.
1902. King-Turner, A. C., M.B., C.M.Edin., The Retreat, Fairford, Gloucestershire.
1899. Kirwan, James St. L., M.B., Ch.B., T.C.D., District Asylum, Ballinasloe, Ireland.
1903. Kough, Edward Fitzadam, M.B., B.Ch., County Asylum, Gloucester.
1898. Labey, Julius, M.R.C.S., Medical Superintendent, Public Asylum, Jersey.
1900. Laing, Charles Frederick, M.B., C.M.Glasg., County Asylum, Wells, Somerset.
1900. Lambert, Ernest Charles, M.R.C.S.Eng., L.R.C.P.Lond., Banstead Asylum, Sutton, Surrey.
1902. Langdon-Down, Percival L., M.A., M.B., B.C.Cantab., Rudder Grange, Cedar Road, Hampton Wick, Middlesex.
1896. Langdon-Down, Reginald L., M.A., M.B., B.C.Cantab., M.R.C.P.Lond., Normansfield, Hampton Wick.
1902. Laval, Evariste, M.B., C.M.Edin., Brislington House Asylum, near Bristol.
1898. Lavers, Norman, M.D., M.R.C.S., Medical Superintendent, The Asylum, Canterbury.
1899. Law, Charles D., L.R.C.P.&S.Edin., L.F.P.G.S., County Asylum, Hatton, near Warwick.
1892. Lawless, George Robert, F.R.C.S.I., Medical Superintendent, District Asylum, Armagh.
1870. Lawrence, Alexander, M.A., M.D., County Asylum, Chester.
1883. Layton, Henry A., M.R.C.S.Eng., L.R.C.P.Edin., Cornwall County Asylum, Bodmin.
1899. Leeper, Richard R., F.R.C.S.I., Medical Superintendent, St. Patrick's Hospital, Dublin.
1883. Legge, Richard J., M.D., Medical Superintendent, County Asylum, Derby.
1894. Lentagne, John, B.A., F.R.C.S.I., Medical Visitor of Lunatics to the Court of Chancery, 5, Upper Merrion Street, Dublin.
1899. Lewis, H. Wolseley, M.R.C.S.Eng., L.R.C.P.Lond., Banstead Asylum, Sutton, Surrey.
1879. Lewis, William Bevan, M.R.C.S., L.R.C.P., West Riding Asylum, Wakefield.
1863. Ley, H. Rooke, M.R.C.S.Eng., 2, Lowther Terrace, Lytham, Lancs.
1899. Ligertwood, Walter H., M.R.C.S., L.R.C.P., Wells Asylum, Somerset.
1859. Lindsay, James Murray, M.D.St.And., F.R.C.S. and F.R.C.P.Edin. 26, Combe Park, Bath. (PRESIDENT, 1893.)
1903. Logan, Thomas Stratford, L.R.C.P. & S.Edin., L.F.P.S.Glas., Assistant Medical Officer, West Riding Asylum, Wakefield.
1899. Longworth, Stephen G., L.R.C.P. L.R.C.S.I., County Asylum, Melton, Suffolk.
1898. Lord, John R., M.B., C.M., Heath Asylum, Bexley, Kent.
1872. Lyle, Thomas, M.D.Glasg., 34, Jesmond Road, Newcastle-on-Tyne.



1888. McAlister, William, M.D.Glas., The Elms, London Road, Kilmarnock, Ayrshire, N.B.
1899. Macartney, W. H. C., L.R.C.P.&S.I., The Grange, East Finchley, London, N.
1880. MacBryan, Henry C., L.R.C.P. & S. Edin., Kingsdown House, Box, Wilts.
1902. McCarthy, Owen F., L.R.C.P.&S.I., District Lunatic Asylum, Cork, Ireland.
1900. McClintock, John, L.R.C.P. & L.R.C.S.Edin., Resident Medical Superintendent, Grove House, Church Stretton, Salop.
1900. McConaghey, John C., M.B., C.M.Edin., Parkside Asylum, Macclesfield, Cheshire.
1886. McCreery, James Vernon, L.R.C.S.I., Medical Superintendent, Hospital for Insane, Kew, Victoria.
1897. McCutchan, William Arthur, L.R.C.P.&S.Edin., Assistant Medical Officer, Cambridge County Asylum, Fulbourn, Cambs.
1901. Macdonald, James H., M.B., Ch.B.Glasg., Govan District Asylum, Hawkhead, Paisley, N.B.
1884. Macdonald, P. W., M.D., C.M., Medical Superintendent, County Asylum, near Dorchester, Dorset. (*Hon. Sec. S.W. Division.*)
1876. McDowall, John Greig, M.D.Edin., Medical Superintendent, West Riding Asylum, Menston, near Leeds.
1870. McDowall, Thomas W., M.D.Edin., L.R.C.S., Medical Superintendent, Northumberland County Asylum, Morpeth. (*President, 1897.*)
1893. Macevoy, Henry John, M.D., B.Sc.Lond., M.P.C., 41, Buckley Road, Brondesbury, London, N.W.
1895. Macfarlane, Neil M., M.D.Aber., Medical Superintendent, Government Hospital, Thlotse Heights, Leribe, Basutoland, South Africa.
1883. Macfarlane, W. H., M.B. and Ch.B.Univ. of Melbourne, Medical Superintendent, Hospital for the Insane, New Norfolk, Tasmania.
1902. McGregor, John, M.B., Ch.B.Edin., Assistant Medical Officer, County Asylum, Bridgend, Glam.
1899. McKelvey, Alexander Niel, L.&M.P.C.P.&S.I., The Asylum, Auckland, New Zealand.
1891. Mackenzie, Henry J., M.B., C.M.Edin., M.P.C., Assistant Medical Officer, The Retreat, York.
1903. Mackenzie, Theodore Charles, M.B., Ch.B.Edin., Royal Edinburgh Asylum, Morningside.
1899. Mackeown, W. John, A.B., M.B., B.A., O.R.U.I., A.M.O., County Asylum, Fareham, Hants.
- \* Mackintosh, Donald, M.D.Durh. and Glasg., L.F.P.S.Glasg.
1873. Macleod, Murdoch D., M.B., Medical Superintendent, East Riding Asylum, Beverley, Yorks.
1901. Macleod, Neil, M.D., C.M.Edin., H.B.M. Consular Surgeon and Surgeon General, The Hospital, Shanghai, China.
1898. Macnaughton, George W. F., M.D., 33, Lower Belgrave Street, Eaton Square, London, S.W.
1882. McNaughton, John, M.D., Medical Superintendent, Criminal Lunatic Asylum, Perth.
1882. Maephail, S. Rutherford, M.D.Edin., Derby Borough Asylum, Rowditch, Derby.
1896. Macpherson, Charles, M.D.Glas., Deputy Commissioner in Lunacy, 51, Queen Street, Edinburgh.
1886. Macpherson, John, M.D., F.R.C.P., Parkhill, Leven, Fife.
1901. MacRae, Duncan M., M.B., C.M., County Asylum, Devizes, Wilts.
1901. McRae, G. Douglas, M.B., C.M.Edin., Assistant Physician, Royal Asylum, Morningside, Edinburgh.
1902. Macrae, Kenneth Duncan Cameron, M.B., Ch.B.Edin., Lynwood, Murrayfield, Edinburgh.

1894. **McWilliam, Alexander, M.A., M.B., C.M.Aber.**, Medical Superintendent, Heigham Hall, Norwich.
1896. **Maguire, Charles Evans, M.D., C.M.**, Colonial Medical Service, Suva Fiji, South Pacific.
1865. **Manning, Henry J., B.A.Lond., M.R.C.S.**, Laverstock House, Salisbury.
1900. **Manning, Herbert C., M.R.C.S., L.R.C.P.**, Powick Asylum, Worcester.
1903. **Marnan, John, M.B., B.Ch.**, Assistant Medical Officer, City and County Asylum, Bristol.
1896. **Marr, Hamilton C., M.D.Glasg.Univ.**, Medical Superintendent, Woodilee Asylum, Lenzie.
1897. **Marshall, John, M.B., C.M.Glasg.**, Assistant Medical Officer, County Asylum, Bridgend, Glamorgan.
1896. **Martin, James Charles, L.R.C.S.I., L.M., L.R.C.P.**, Assistant Medical Officer, District Asylum, Donegal.
1897. **Mathieson, George, M.B., C.M.Glasg.**, Fir Vale, Sheffield.
1890. **Menzies, W. F., M.D., B.Sc.Edin.**, Medical Superintendent, Stafford County Asylum, Cheddleton, near Leek.
1891. **Mercier, Charles A., M.B.Lond., F.R.C.S.Eng.**, Lecturer on Insanity, Westminster Hospital; Flower House, Catford, S.E.
1877. **Merson, John, M.A., M.D.Aber.**, Medical Superintendent, Borough Asylum, Hull.
1871. **Mickle, William Julius, M.D., F.R.C.P.Lond.**, Medical Superintendent, Grove Hall Asylum, Bow, London. (PRESIDENT, 1896.)
1893. **Middlemass, James, M.D., F.R.C.P., C.M., B.Sc.Edin.**, Borough Asylum, Ryhope, Sunderland.
1898. **Middlemist, George Edwyn, M.B.**, Moretonhampstead, Devon.
1883. **Miles, George E., M.R.C.P., &c.**, Medical Superintendent, Hospital for the Insane, Rydalmere, New South Wales.
1887. **Miller, Alfred, M.B. and B.C.Dubl.**, Medical Superintendent, Hatton Asylum, Warwick.
1893. **Mills, John, M.B., B.Ch.**, and Diploma in Mental Diseases, R.U.I., Assistant Medical Officer, District Asylum, Ballinasloe.
1881. **Mitchell, Richard B., M.D.**, Medical Supt., Midlothian District Asylum.
1885. **Molony, John, F.R.C.P.I., J.P.**, Forkhill House, Forkhill, Dundalk.
1878. **Moody, James M., M.R.C.S.Eng., L.R.C.P.&L.M.Edin.**, Medical Superintendent, County Asylum, Cane Hill, Surrey.
1885. **Moore, Edw. E., M.D.Dubl., M.P.C.**, Medical Superintendent, District Asylum, Letterkenny, Ireland.
1899. **Moore, Wm. D., M.D., M.Ch.**, Medical Superintendent, Holloway Sanatorium, Virginia Water, Surrey.
1892. **Morrison, Cuthbert S., L.R.C.P. and L.R.C.S.Edin.**, Medical Superintendent, County and City Asylum, Burghill, Hereford.
1896. **Morton, W. B., M.D.Lond.**, Assistant Medical Officer, Brislington House, Bristol.
1896. **Mott, F. W., M.D., B.Sc., B.S., F.R.C.P.Lond., F.R.S.**, 25, Nottingham Place, W.; Pathologist, London County Asylums; Assistant Physician, Charing Cross Hospital.
1896. **Mould, Gilbert E., M.R.C.S., L.R.C.P.Lond.**, The Grange, Rotherham, Yorks.
1862. **Mould, George W., M.R.C.S.Eng.**, Medical Superintendent, Royal Lunatic Hospital, Cheadle, Manchester. (PRESIDENT, 1880.)
1897. **Mould, Philip G., M.R.C.S.Eng., L.R.C.P.Lond.**, Assistant Medical Officer, Royal Lunatic Hospital, Cheadle, Manchester.
1897. **Mumby, Bonner Harris, M.D.Aber., D.P.H.Cantab.**, Medical Superintendent, Borough Asylum, Portsmouth.
1893. **Murdoch, James William Aitken, M.B., C.M.Glasg.**, Medical Superintendent, Berks County Asylum, Wallingford.

1900. Murphy, Jerome J., M.R.C.S., L.R.C.P.Lond., Banstead Asylum Sutton, Surrey.
1878. Murray, Henry G., L.R.C.P.I., L.M., L.R.C.S.I., Assistant Medical Officer, Prestwich Asylum, Manchester.
1891. Musgrove, Chas. D., M.D.Edin., 8, Herbert Terrace, Penarth, S. Wales.
1903. Navarra, Norman, M.R.C.S., L.R.C.P., City of London Asylum, Stone, Dartford.
1880. Neil, James, M.D., M.P.C., Assistant Medical Officer, Warneford Asylum, Oxford.
1903. Nelis, William F., M.D., Monmouthshire Asylum, Abergavenny.
1875. Newington, Alexander, M.B.Camb., M.R.C.S.Eng., Woodlands, Ticehurst.
1873. Newington, H. Hayes, F.R.C.P.Edin., M.R.C.S.Eng., The Gables, Ticehurst, Sussex. (PRESIDENT, 1889.) (*Treasurer.*)
1881. Newth, Alfred H., M.D., Ardin House, Haywards Heath, Sussex.
1869. Nicolson, David, C.B., M.D., C.M.Aber., M.R.C.P.Edin., F.S.A.Scot., Balgownie, Edgeborough Road, Guildford. (PRESIDENT, 1895.)
1899. Nixon, John C., M.B., West Riding Asylum, Menston, nr. Leeds.
1893. Nobbs, Athelstane, M.D., C.M.Edin., 339, Queen's Road, Battersea Park, S.W.
1888. Nolan, Michael J., L.R.C.P.I., M.P.C., Medical Superintendent, District Asylum, Downpatrick.
1892. Noott, Reginald Harry, M.B., C.M.Edin., Senior Assistant Medical Officer, Criminal Lunatic Asylum, Broadmoor, Berks.
1880. Norman, Conolly, F.R.C.P.I., Medical Superintendent, Richmond District Asylum, Dublin, Ireland. (*Hon. Secretary for Ireland, 1887—1894.*) (PRESIDENT, 1895.) (*Editor of Journal.*)
1885. Oakshott, James A., M.D., Medical Superintendent, District Asylum, Waterford, Ireland.
1903. O'Doherty, Patrick, B.A. and M.B.Irel., District Asylum, Omagh.
1901. Ogilvy, David, B.A., M.D., B.Ch., L.M.Dub., Assistant Medical Officer, London County Asylum, Horton, nr. Epsom, Surrey.
1892. O'Mara, Francis, L.R.C.P.&S.I., District Asylum, Ennis, Ireland.
1886. O'Neill, Edward D., M.R.C.P.I., Medical Superintendent, The Asylum, Limerick.
1868. Orange, William, M.D.Heidelb., F.R.C.P.Lond., C.B., Oakhurst Godalming, Surrey. (PRESIDENT, 1883.)
1902. Orr, David, M.B., C.M.Edin., Pathologist, County Asylum, Prestwich, Lancs.
1899. Osburne, Cecil A. P., F.R.C.S.Edin., L.R.C.P.Edin., The Grove, Old Catton, Norwich.
1890. Oswald, Landel R., M.B., M.P.C., Physician Superintendent, Royal Asylum, Gartnavel, Glasgow.
1899. Owen, Corbet W., M.B., C.M.Edin., 31, High Street, Bangor, North Wales.
1902. Parker, Charles Seymour, M.R.C.S.Eng., L.R.C.P.Lond., University College Hospital, London, W.C.
1898. Parker, William Arnot, M.B., C.M., Gartloch Asylum, Gartcosh, N.B.
1899. Parsons, L. D., B.A., M.B., Ch.B., New Provincial Asylum, Nassau, Bahamas.
1898. Pasmore, Edwin Stephen, M.D.Lond., M.R.C.P.Lond., Croydon Asylum, Warlingham, Surrey.
1901. Passmore, Wm. Edwin, L.S.A.Lond., 2, Sylvan Villas, Woodford Green, Essex.
1899. Paton, Robert N., L.R.C.P., L.R.C.S.Edin., Medical Officer, H.M. Prison, Wormwood Scrubbs, London, W.

1899. Patrick, John, M.B., Ch.B., District Asylum, Belfast.
1892. Patterson, Arthur Edward, M.D., C.M.Aber., Senior Assistant Medical Officer, City of London Asylum, Dartford.
1903. Pearce, Francis H., M.B., B.C.Cantab., Earlswood Asylum, Redhill, Surrey.
1899. Pearce, G. Heneage, M.A., M.R.C.S., Borough Asylum, Humberstone, Leicester.
1873. Pedler, George H., L.R.C.P.Lond., M.R.C.S.Eng., 6, Trevor Terrace, Knightsbridge, S.W.
1903. Peebles, Alex. Spalding Mackie, M.B., Ch.B.Edin., Perth District Asylum, Murthly.
1893. Perceval, Frank, M.R.C.S.Eng., L.R.C.P.Lond., Medical Superintendent, County Asylum, Prestwich, Manchester, Lancashire.
1878. Philipps, Sutherland Rees, M.D., C.M. Queen's Univ. Irel., F.R.G.S., 8, Claremont Road, Surbiton.
1875. Philipson, Sir George Hare, M.D. and M.A.Cantab., F.R.C.P.Lond., 7, Eldon Square, Newcastle-on-Tyne.
1891. Pierce, Bedford, M.D.Lond., M.R.C.P., Medical Superintendent, The Retreat, York.
1888. Pietersen, J. F. G., M.R.C.S., Ashwood House, Kingswinford, near Dudley, Stafford.
1898. Piper, Francis Parris, M.B.Lond., M.R.C.S., L.R.C.P., London County Asylum, Bexley, Kent.
1896. Planck, Charles, M.A.Camb., M.R.C.S.Eng., L.R.C.P.Lond., Assistant Medical Officer, East Sussex County Asylum, Haywards Heath.
1877. Plaxton, Joseph William, M.R.C.S., L.S.A.Eng., The Lunatic Asylum, Kingston, Jamaica.
1889. Pope, George Stevens, L.R.C.P.&L.R.C.S.Edin., L.F.P.&S.Glasg., Medical Superintendent, Middlesbrough Asylum, Cleveland, Yorks.
1900. Powell, Alfred B. S., L.R.C.P. and S.Edin., Grahamston Asylum, Cape of Good Hope.
1876. Powell, Evan, M.R.C.S.Eng., L.S.A., Medical Superintendent, Borough Lunatic Asylum, Nottingham.
1891. Price, Arthur, M.R.C.S., L.S.A., M.P.C., Merriebank, Walton Park, Liverpool.
1875. Pringle, Henry T., M.D.Glasg., Medical Superintendent, County Asylum, Bridgend, Glamorgan.
1901. Pugh, Robert, M.D.Edin., Ch.B., Claybury Asylum, Woodford Bridge, Essex.
1899. Rainsford, F. E., M.D., B.A., Resident Physician, Stewart Institute, Palmerston, co. Dublin.
1894. Rambaut, Daniel F., M.D.Univ. Dubl., Salop and Montgomery Asylum, Bicton Heath, Shrewsbury.
1902. Rattray, A. Mair, M.B., C.M.Edin., City Asylum, Gosforth, Newcastle-on-Tyne.
1889. Raw, Nathan, M.D., F.R.C.S., Mill Road Infirmary, Liverpool.
1893. Rawes, William, M.D.Durh., F.R.C.S.Eng., Medical Superintendent, St. Luke's Hospital, Old Street, London, E.C.
1870. Rayner, Henry, M.D.Aberd., M.R.C.P.Edin., 16, Queen Anne Street, London, W. (PRESIDENT, 1884.) (*Late General Secretary.*) (*Editor of Journal.*)
1903. Read, George F., L.R.C.S., L.R.C.P.Edin., Hospital for the Insane, New Norfolk, Tasmania.
1899. Redington, John, F.R.C.S.&L.R.C.P.I., A.M.O., Richmond Asylum, Dublin.
1887. Reid, William, M.D., Physician Superintendent, Royal Asylum, Aberdeen.
1891. Renton, Robert, M.B., C.M.Edin., M.P.C., Courtburn, Coldingham, Berwickshire.
1886. Revington, George, M.D. and Stewart Scholar Univ. Dubl., M.P.C., Medical Superintendent, Central Criminal Asylum, Dundrum, Ireland.

1903. Rhodes, John Wilson, M.D.Brux., L.R.C.P.&S.Edin., Ivy Lodge, Barton Moor, Didsbury, Manchester.
1899. Rice, David, M.R.C.S., L.R.C.P., Cheddleton Asylum, nr. Leek, Staffs.
1897. Richard, William J., M.A., M.B., C.M.Glasg., Medical Officer, Govan Parochial Asylum, Merryflats, Govan.
1899. Richards, John, M.B., C.M.Edin., Leicestershire and Rutland Asylum, Leicester.
1889. Richards, Joseph Peeke, M.R.C.S., L.S.A., 6, Freeland Road, Ealing, W.
1903. Ridewood, Harold Edward, M.R.C.S., L.R.C.P., London Hospital, E.
1893. Rivers, William H. R., M.A., M.D.Lond., St. John's College, Cambridge University.
1903. Roberts, Norcliffe, M.B., B.S.Durh., The Vicarage, West Cornforth, Durham.
1871. Robertson, Alexander, M.D.Edin., 11, Woodside Crescent, Glasgow.
1887. Robertson, Geo. M., M.B., C.M. and F.R.C.P.Edin., M.P.C., Medical Superintendent, District Asylum, Larbert, Stirling.
1895. Robertson, William Ford, M.D., C.M., 7, Hill Square, Edinburgh.
1900. Robinson, Harry A., M.D., Ch.B.Vict., Darenth Asylum, Dartford, Kent.
1876. Rogers, Edward Coulton, M.R.C.S.Eng., L.S.A., County Asylum, Fulbourn, Cambridge.
1859. Rogers, Thomas Lawes, M.D.St. And., M.R.C.P.Lond., M.R.C.S.Eng., Eastbank, Court Road, Eltham, Kent. (PRESIDENT, 1874.)
1895. Rolleston, Lancelot W., M.B., B.S.Durh., Senior Assistant Medical Officer, Middlesex County Asylum, Tooting, S.W.
1879. Ronaldson, J. B., M.D.St.And., F.R.C.S.&L.R.C.P.Edin., Medical Officer, District Asylum, Haddington.
1879. Roots, William H., M.R.C.S., Canbury House, Kingston-on-Thames.
1899. Rorie, George Arthur, M.B., C.M., Senior Assistant Medical Officer, Dorset County Asylum, Dorchester.
1860. Rorie, James, M.D.Edin., L.R.C.S.Edin., Medical Superintendent, Royal Asylum, Dundee. (*Late Hon. Secretary for Scotland.*)
1888. Ross, Chisholm, M.D., Sydney, Hospital for the Insane, Callan Park, New South Wales.
1899. Rotherham, Arthur, M.A., M.B., B.C.Cantab., Horton Manor Asylum, near Epsom, Surrey.
1902. Round, John, L.R.C.P., L.R.C.S., L.F.P.S., 57, Elvington Street, Plymouth.
1884. Rowe, Edmund L., L.R.C.P.&S.Edin., Medical Superintendent, Borough Asylum, Ipswich.
1883. Rowland, E. D., M.B., C.M.Edin., The Public Hospital, New Amsterdam, Berbice, British Guiana.
1902. Rows, Richard Gundry, M.D.Lond., M.R.C.S., L.R.C.P., Pathologist County Asylum, Lancaster.
1877. Russell, Arthur P., M.B., M.R.C.P.Edin., The Lawn, Lincoln.
1866. Rutherford, James, M.D.Edin., F.R.C.P.Edin., F.F.P.S.Glasgow, Physician Superintendent, Crichton Royal Institution, Dumfries. (*Hon. Secretary for Scotland, 1876-86.*)
1896. Rutherford, James Mair, M.B., C.M.Edin., Assistant Physician, Royal Edinburgh Asylum, Morningside.
1896. Rutherford, Robert Leonard, M.D., Medical Superintendent, Digby's Asylum, Exeter.
1892. Rutledge, Victor J., M.B., District Asylum, Londonderry, Ireland.
1902. Sall, Ernest Frederick, M.R.C.S.Eng., L.R.C.P.Lond., Assistant Medical Officer, West Sussex County Asylum, Chichester.

*Members of the Association.*

1894. Sankey, Edward H. O., M.A., M.B., B.C.Cantab., Resident Medical Licensee, Boreatton Park Licensed House, Baschurch, Salop.
- \* Sankey, R. Heurtley H., M.R.C.S.Eng., Medical Superintendent, Oxford County Asylum, Littlemore, Oxford.
1873. Savage, G. H., M.D.&F.R.C.P.Lond., 3, Henrietta Street, Cavendish Square, W. (*Late Editor of Journal.*) (PRESIDENT, 1886.)
1908. Savill, Thomas D., M.D.Lond., 60, Upper Berkeley Street, London, W.
1899. Scott, Charles R., M.B., C.M.Edin., Bedwell Place, Abingdon.
1896. Scott, James, M.B., C.M.Edin., 19, Raleigh Gardens, Brixton Hill, London, S.W.
1889. Scowcroft, Walter, M.R.C.S., Senior Assistant Medical Officer, Royal Lunatic Hospital, Cheadle, near Manchester.
1880. Seccombe, George S., M.R.C.S., L.R.C.P., The Colonial Lunatic Asylum, Port of Spain, Trinidad, West Indies.
1879. Seed, William Hy., M.B., C.M.Edin., The Poplars, 110, Waterloo Road, Ashton-on-Ribble, Preston.
1889. Sells, Charles John, L.R.C.P., M.R.C.S., L.S.A., White Hall, Guildford.
1902. Serjeant, Robert, M.R.C.S., L.R.C.P., Camberwell House Asylum, Peckham Road, S.E.
1882. Seward, William J., M.B.Lond., M.R.C.S., Medical Superintendent, Colney Hatch Asylum, London, N.
1901. Shaw, B. Henry, M.B., B.Ch., B.A.O., R.M.I., Assistant Medical Officer, County Asylum, Stafford.
1891. Shaw, Harold B., B.A., M.B., D.P.H.Camb., Medical Superintendent, Isle of Wight County Asylum, Whitecroft, Newport, Isle of Wight.
1880. Shaw, James, M.D., 310, Kensington, Liverpool.
- Shaw, T. Claye, M.D.Lond., F.R.C.P.Lond., 30, Harley Street, London, W.
1882. Sheldon, Thomas S., M.B., Medical Superintendent, Cheshire County Asylum, Parkside, Macclesfield.
1900. Shera, J. E. P., M.R.C.S., L.R.C.P., Kent County Asylum, Chartham, near Canterbury.
1898. Sherrard, David John, B.A., M.B., M.Ch.Dubl., 15, Belgrave Place, Brighton.
1877. Shuttleworth, G. E., M.D.Heidelb., M.R.C.S. and L.S.A.Eng., B.A.Lond., late Medical Superintendent, Royal Albert Asylum, Lancaster; Ancaster House, Richmond Hill, Surrey.
1899. Sibley, Reginald Oliver, M.B.Lond., M.R.C.S., L.R.C.P., Assistant Medical Officer, London County Asylum, Cane Hill, Purley, Surrey.
1901. Simpson, Alexander, M.A., M.D.Aber., Medical Superintendent, County Asylum, Winwick, Newton-le-Willows, Lancashire.
1895. Simpson, Francis Odell, M.R.C.S., L.R.C.P., Senior Assistant Medical Officer, County Asylum, Rainhill, near Liverpool.
1888. Sinclair, Eric, M.D.Glasg., Medical Superintendent, Gladesville Asylum, New South Wales.
1891. Skeen, James Humphry, M.B., C.M.Aber., Medical Superintendent, Glasgow District Asylum, Bothwell.
1898. Skeen, William St. John, M.B., C.M., County Asylum, Winterton, Ferryhill, Durham.
1900. Skinner, Ernest W., M.D., C.M.Edin., Bank House, Rye, Sussex.
1903. Skinner, William Alfred, M.B., Natal Government Asylum, Pietermaritzburg.
1897. Smalley, Herbert, M.D.Durh., L.R.C.P., M.R.C.S., Prison Commission, Home Office, Whitehall, S.W.
1899. Smith, John G., M.D., Herts County Asylum, Hill End, St. Albans, Herts.
1885. Smith, R. Percy, M.D., B.S., F.R.C.P., M.P.C., 36, Queen Anne Street, Cavendish Square, W. (*General Secretary, 1896-7.*)

1858. Smith, Robert, M.D.Aber., L.R.C.S.Edin., Phoenix Lodge, Montpellier Drive, Cheltenham.
1884. Smith, W. Beattie, F.R.C.S.Edin., L.R.C.P.Lond., 56, Collins Street, Melbourne, Victoria.
1903. Smith, William Maule A., M.B., ChB.Edin., M.R.C.P.Edin., West Riding Asylum, Wakefield, Yorks.
1901. Smyth, Robt. B., M.A., M.D., Ch.B., Senior Assistant Medical Officer, County Asylum, Gloucester.
1899. Smyth, Walter S., M.B., B.Ch., R.U.I., Assistant Medical Officer, County Asylum, Antrim.
1885. Soutar, James Grieg, M.B., Barnwood House, Gloucester.
1883. Spence, John Buchan, M.D., M.C., The Asylum, Colombo, Ceylon.
1875. Spence, J. Beveridge, M.D., M.C. Queen's Univ., Medical Superintendent, Burntwood Asylum, near Lichfield. (PRESIDENT, 1899-1900, formerly Registrar.)
1898. Sproat, James Hugh, M.B.Lond., M.R.C.S., L.R.C.P., Somerset and Bath Asylum, Wells.
1891. Stansfield, T. E. K., M.B., C.M.Edin., The Heath Asylum Bexley, Kent.
1901. Starkey, William, M.B., B.Ch., B.A.O.Roy. Univ. Irel., Assistant Medical Officer, Lancashire County Asylum, Preatwich, near Manchester.
1898. Steen, Robert H., M.D.Lond., B.A., R.U.I., West Sussex Asylum, near Chichester.
1899. Stevens, Reginald C. J., M.B., B.S.Durh., County Asylum, Exminster, Devon.
1868. Stewart, James, B.A. Queen's Univ. Irel., F.R.C.P.Edin., L.R.C.S.Irel., Dunmurry, Sneyd Park, near Clifton, Gloucestershire.
1884. Stewart, Robert S., M.D., C.M., Assistant Medical Officer, Angelton, Bridgend, Glamorgan.
1887. Stewart, Rothsay C., M.R.C.S., Medical Superintendent, County Asylum, Leicester.
1862. Stilwell, Henry, M.D.Edin., M.R.C.S.Eng., Moorcroft House, Hillingdon, Middlesex.
1899. Stilwell, Reginald J., M.R.C.S., L.R.C.P., Moorcroft House, Hillingdon, Middlesex.
1864. Stocker, Alonzo Henry, M.D.St. And., M.R.C.P.Lond., M.R.C.S.Eng., Medical Superintendent, Peckham House Asylum, Peckham.
1897. Stoddart, William Henry Butter, M.D., B.S.Lond., M.R.C.S.Eng., M.R.C.P.Lond., Bethlem Royal Hospital, London, S.E.
1900. Stracey, Bernard, M.B., Ch.B.Edin., Sutton-Bonnington, Loughborough.
1903. Stratton, Percy Haughton, M.R.C.S., L.R.C.P.Lond., The Priory, Roehampton, S.W.
1885. Street, C. T., M.R.C.S., L.R.C.P., Haydock Lodge, Ashton, Newton-le-Willows, Lancashire.
1900. Stuart, Esther Molyneux, M.B., C.M.Edin., County Asylum, Morpeth, Northumberland.
1897. Stuart, Robert, M.R.C.S., L.R.C.P.Lond., 20, New Elvet, Durham.
1900. Sturrock, James Prain, M.A., M.B., C.M.Edin., Midlothian and Peebles Asylum, Rosslynlee, N.B.
1886. Suffern, Alex. C., M.D., Medical Superintendent, Ruberry Hill Asylum, near Bromsgrove, Worcestershire.
1894. Sullivan, William C., M.D.R.U.I., 444, Camden Road, London, N.
1898. Sutcliffe, John, M.R.C.S., L.R.C.P., Royal Asylum, Cheadle, near Manchester.
1903. Sutherland, David, M.B., Ch.B.Edin., Pathologist, Wadsley Asylum, Sheffield.
1895. Sutherland, John Francis, M.D.Edin., Deputy Commissioner in Lunacy, 19, Mayfield Road, Edinburgh.

1877. Swanson, George I., M.D.Edin., The Pleasaunce, Heworth Moor, York.
1901. Sykes, Arthur, M.R.C.S., L.R.C.P., Assistant Medical Officer, City Asylum, Hellesdon, nr. Norwich.
1897. Tait, James Sinclair, M.D., L.R.C.P.Lond., F.R.C.S.Edin., L.R.C.P. Edin., D.P.H.Edin., R.C.P.S.Edin., F.P.S.Glasg., Medical Superintendent, Hospital for Insane, St. John's, Newfoundland.
1857. Tate, William B., M.D.Aber., M.R.C.P.Lond., M.B.C.S.Eng., Medical Superintendent, Lunatic Hospital, The Coppice, Nottingham.
1897. Taylor, Frederic Ryott Percival, M.D., B.S.Lond., M.R.C.S.Eng., L.R.C.P.Lond., East Sussex Asylum, Hellingly.
1903. Telford-Smith, Telford, M.A., M.D., Winborne, Dorset.
1888. Thomas, Edward G., M.B., C.M.Edin., Haveringwell, Caterham, Surrey.
1880. Thomson, David G., M.D., C.M., Medical Superintendent, County Asylum, Thorpe, Norfolk.
1902. Thomson, Eric M., M.A., M.B., Ch.B., Assistant Medical Officer Government Lunatic Asylum, Kingston, Jamaica.
1903. Thomson, Herbert Campbell, M.D., F.R.C.P.Lond., Assist. Physician Middlesex Hospital, 34, Queen Anne Street, W.
1902. Thomson, James, M.A., M.D., Gartloch Hospital for Mental Diseases, Gartcosh, N.B.
1901. Tighe, John V. G. B., M.B., B.Ch., B.A.O.Irel., North Riding Asylum, Clifton, Yorks.
1900. Tinker, William, M.R.C.S., L.R.C.P., Holloway Sanatorium, Virginia Water, Surrey.
1898. Todd, Percy Everard, M.B., Medical Superintendent, Pretoria Asylum, Transvaal, South Africa.
1903. Topham, J. Arthur, B.A.Cantab., M.R.C.S.&P.Lond., Northumberland House Asylum, Finsbury Park, N.
1901. Torney, George Parsons, A.B.Dubl., L.R.C.P., L.R.C.S.I., L.M., Medical Superintendent, County Asylum, Lincoln.
1896. Townsend, Arthur A. D., M.R.C.S.Eng., L.R.C.P.Lond., Assistant Medical Officer, Hospital for Insane, Barnwood House, Gloucester.
1903. Tredgold, Alfred F., M.R.C.S., L.R.C.P., 2, Dapdune Crescent, Guildford, Surrey.
1902. Trevelyan, Edmund Fauriel, M.D.Lond., F.R.C.P.Lond., Assistant Physician to the Leeds General Infirmary, 40, Park Square, Leeds.
1881. Tuke, Charles Molesworth, M.R.C.S.Eng., Chiswick House, Chiswick.
1888. Tuke, John Batty, jun., M.D., F.R.C.P.Edin., Resident Physician, Saughton Hall, Edinburgh.
1885. Tuke, T. Seymour, M.A., M.B., B.Ch., M.R.C.S.E., Chiswick House, Chiswick, W.
1877. Turnbull, Adam Robert, M.B., C.M.Edin., Medical Superintendent, Fife and Kinross District Asylum, Cupar. (*Hon. Secretary for Scotland.*)
1889. Turner, Alfred, M.D., C.M., Plympton House, Plympton, S. Devon.
1890. Turner, John, M.B., C.M.Aberd., Senior Assistant Medical Officer, Essex County Asylum, Brentwood.
1903. Turner, Oliver P., M.R.C.S., L.R.C.P., Warwick County Asylum, Hatton, nr. Warwick.
1878. Urquhart, Alex. Reid, M.D., F.R.C.P.E., Physician Superintendent, James Murray's Royal Asylum, Perth. (*Editor of Journal.*) (*Hon. Secretary for Scotland, 1886-94.*) (*PRESIDENT, 1898.*)
1900. Veitch, J. Ogilvie, M.B., C.M.Edin., County Asylum, Powick, Worcester.
1894. Vincent, William James, M.B.Durh., Assistant Medical Officer, Wadsley Asylum, near Sheffield.
1894. Walker, Edw. B. C., M.D., C.M.Edin., Medical Superintendent, East Sussex Asylum, Haywards Heath.
1896. Walker, William F., L.R.C.S.&L.M.Edin., L.S.A.Lond., Plas-yn-Dinas, Dinas Mawddwy, Merionethshire.



1898. Wall, Charles Percivale Bligh, M.B., Ch.B.Edin., Butterworth, Trankei, Cape Colony.
1877. Wallace, James, M.D., Visiting Medical Officer, 16, Union Street, Greenock.
1900. Walters, John Basil, M.R.C.S.Eng., L.R.C.P.Lond., Crinnis, Par Station, Cornwall.
1889. Warnock, John, M.D., C.M., B.Sc., Abassia, nr. Cairo, Egypt.
1895. Waterston, Jane Elizabeth, M.D.Brux., L.R.C.P.I., L.R.C.S.Edin., 53, Parliament Street, Cape Town, South Africa.
1902. Watson, Frederick, M.B., C.M.Edin., The Grange, East Finchley, London, N.
1891. Watson, George A., M.B., C.M.Edin., M.P.C., 29, Abbot's Park Road, Leyton, Essex.
1903. Watson, John Harry, M.R.C.S.Eng., L.R.C.P., Assistant Medical Officer, Colney Hatch Asylum, London, N.
1885. Watson, William Riddell, L.R.C.S. and L.R.C.P.Edin., Govan District Asylum, Hawkhead, Paisley.
1898. Watson, William Riddell Kemlo, M.A., M.B., C.M., 18, Montrell Road, Streatham Hill, London, S.W.
1880. Weatherly, Lionel A., M.D., M.R.C.S., Bailbrook House, Bath.
1902. Welch, Frederick Day, M.R.C.S., L.R.C.P.Lond., Assistant Medical Officer, Burghill Asylum, Hereford.
1897. Welsh, Gilbert Aitken, M.D., C.M.Edin., The Crescent, Garliestown, N.B.
1880. West, George Francis, L.R.C.P.Edin., Medical Superintendent, District Asylum, Kilkenny, Ireland.
1872. Whitcombe, Edmund Bancks, M.R.C.S., Medical Superintendent, Winson Green Asylum, Birmingham. (PRESIDENT, 1891.)
1884. White, Ernest William, M.B.Lond., M.R.C.P.Lond., Resident Physician and Superintendent, City of London Asylum, nr. Dartford, Kent. (*Hon. Sec. South-Eastern Division, 1897-1900.*)
1903. Whittingham, George M., M.R.C.S., L.R.C.P., Earlswood Asylum, Redhill, Surrey.
1889. Whitwell, James Richard, M.D. and C.M., Medical Superintendent, Suffolk County Asylum, Melton Woodbridge.
1903. Wigan, Charles Arthur, M.D.Durh., M.R.C.S.Eng., Deepdene, Portishead, Somerset.
1888. Wigglesworth, J., M.D., F.R.C.P.Lond., Rainhill Asylum, Lancashire. (PRESIDENT, 1902-3.)
1895. Wilcox, Arthur William, M.B., C.M.Edin., Assistant Medical Officer, County Asylum, Hatton, Warwick.
1900. Wilkinson, H. B., M.R.C.S., L.R.C.P., Assistant Medical Officer, Plymouth Borough Asylum, Blackadon, Ivybridge, South Devon.
1887. Will, John Kennedy, M.A., M.D., C.M., Bethnal House, Cambridge Road, N.E.
1902. Willis, Wm. Frederick, M.R.C.S.Eng., L.R.C.P.Lond., Assistant Medical Officer, County Asylum, Exminster, Devon.
1901. Wilson, Albert, M.D.Edin., 1, Belsize Park, N.W.
1890. Wilson, George R., M.D., C.M., M.P.C., Medical Superintendent, Mavisbank Private Asylum, Polton, Midlothian.
1896. Wilson, Robert, M.B., C.M.Glasg., Nailsworth, Gloucestershire.
1897. Winder, W. H., M.R.C.S., L.R.C.P.Lond., D.P.H.Cantab., Deputy Medical Officer, H.M. Convict Prison, Aylesbury.
1875. Winslow, Henry Forbes, M.D.Lond., M.R.C.P.Lond., 14, York Place, Portman Square, London.
1897. Wiseman, David William, M.R.C.S.Eng., L.R.C.P.Lond., 300, Commercial Road, Portsmouth.
1894. Wood, Guy Mills, M.B.Durh., 49, Gordon Square, London, W.C.

1903. Wood, Maurice Dale, M.D.Durh., B.S., Assistant Medical Officer, County Asylum, Haywards Heath, Sussex.
1869. Wood, T. Outterson, M.D., M.R.C.P.Lond., F.R.C.P., F.R.C.S.Edin., 40, Margaret Street, Cavendish Square, W.
1885. Woods, J. F., M.D., M.R.C.S., Medical Superintendent, Hoxton House, N.
1873. Woods, Oscar T., B.A., M.D.T.C.D., L.R.C.S.I., Medical Superintendent, District Asylum, Cork. (*Hon. Secretary for Ireland, 1897.*) (PRESIDENT, 1901.)
1900. Worth, Reginald, M.R.C.S., L.R.C.P., Middlesex County Asylum, Wandsworth, S.W.
1877. Worthington, Thomas Blair, M.A., M.D., and M.C.Trin. Coll., Dubl., Medical Supt., County Asylum, Knowle, Fareham, Hants.
1898. Yeates, Thomas, M.B., C.M., Borough Asylum, Ryhope, Sunderland.
1862. Yellowlees, David, LL.D., M.D.Edin., F.F.P.S.Glasg., 6, Albert Gate, Dowan Hill, Glasgow. (PRESIDENT, 1890.)

ORDINARY MEMBERS	...	...	...	...	...	597
HONORARY MEMBERS	...	...	...	...	...	36
CORRESPONDING MEMBERS	...	...	...	...	...	12
Total	...	...	...	...	...	645

*Members are particularly requested to send changes of address, etc., to Dr. Robert Jones, the Honorary Secretary, 11, Chandos Street, Cavendish Square, London, W., and in duplicate to the Printers of the Journal, Messrs. Adlard and Son, 22½ Bartholomew Close, London, E.C.*

List of those who have passed the Examination for the Certificate of Efficiency in Psychological Medicine, entitling them to append M.P.C. (Med.-Psych. Certif.) to their names.

- |                                 |                           |
|---------------------------------|---------------------------|
| Adamson, Robert O.              | Cooper, Alfred J. S.      |
| Adkins, Percy, R.               | Cope, George Patrick.     |
| Ainley, Fred Shaw.              | Corner, Harry.            |
| Ainalie, William.               | Cotton, William.          |
| Alexander, Edward H.            | Couper, Sinclair.         |
| Anderson, A. W.                 | Cowan, John J.            |
| Anderson, Bruce Arnold.         | Cowie, C. G.              |
| Anderson, John.                 | Cowie, George.            |
| Andriezon, W.                   | Cowper, John.             |
| Armour, E. F.                   | Cox, Walter H.            |
| Attegalle, J. W. S.             | 8 Craig, M.               |
| Aveline, H. T. S.               | Cram, John.               |
| Ballantyne, Harold S.           | Crills, G. H.             |
| Barbour, William.               | Cross, Edward John.       |
| Barker, Alfred James Glanville. | Cruickshank, George.      |
| Bashford, Ernest Francis.       | Cullen, George M.         |
| Begg, William.                  | Cunningham, James F.      |
| Belben, F.                      | Dalgetty, Arthur B.       |
| Bird, James Brown.              | Davidson, Andrew.         |
| Blachford, J. Vincent.          | Davidson, William.        |
| Black, Robert S.                | 6 Dawson, W. R.           |
| Black, Victor.                  | De Silva, W. H.           |
| Blackwood, John.                | Distin, Howard.           |
| Blandford, Henry E.             | Donald, Wm. D. D.         |
| 7 Bond, C. Hubert.              | Donaldson, R. L. S.       |
| Bond, R. St. G. S.              | Donellan, James O'Conor.  |
| Bowlan, Marcus M.               | Douglas, A. R.            |
| Boyd, James Paton.              | Downey, Augustine.        |
| Bristowe, Hubert Carpenter.     | Drummond, Russell J.      |
| Brodie, Robert C.               | Eames, Henry Martyn.      |
| Brough, C.                      | Earls, James H.           |
| Browne, Hy. E.                  | East, W. Norwood.         |
| Bruce, John.                    | Easterbrook, Charles C.   |
| Bruce, Lewis C.                 | Eden, Richard A. S.       |
| Brush, S. C.                    | Edgerley, S.              |
| Bulloch, William.               | Edwards, Alex. H.         |
| Calvert, William Dobree.        | Elkins, Frank A.          |
| Cameron, James.                 | Ellis, Clarence J.        |
| Campbell, Alex Keith.           | English, Edgar.           |
| Campbell, Alfred W.             | Eustace, J. N.            |
| Campbell, Peter.                | Eustace, Henry Marcus.    |
| Carmichael, W. J.               | Evans, P. C.              |
| Carruthers, Samuel W.           | Ewan, John A.             |
| Carter, Arthur W.               | Ezard, Ed. W.             |
| Chambers, James.                | Falconer, James F.        |
| Chapman, H. C.                  | Farquharson, Wm. Fredk.   |
| Christie, William.              | Fennings, A. A.           |
| Clarke, Robert H.               | Ferguson, Robert.         |
| Clayton, Frank Herbert A.       | Findlay, G. Landsborough. |
| Clinch, Thomas Aldous.          | Fitzgerald, Gerald.       |
| Coles, Richard A.               | Fleck, David.             |
| Collie, Frank Lang.             | Fox, F. G. T.             |
| Collier, Joseph Henry.          | Fraser, Donald Allan.     |
| Conolly, Richard M.             | Fraser, Thomas.           |
| Conry, John.                    | Frederick, Herbert John.  |
| Cook, William Stewart.          | Gaudin, Francis Neel.     |

- Gawn, Ernest K.  
 Gemmell, William.  
 Genney, Fred. S.  
 Gibson, Thomas.  
 Giles, A. B.  
 Gill, J. Macdonald.  
 Gilmour, John R.  
 Goldie, E. M.  
 Goldschmidt, Oscar Bernard.  
 Goodall, Edwin.  
 Graham, Dd. James.  
 Graham, F. B.  
 Grainger, Thomas.  
 Grant, J. Wemyss.  
 Grant, Lacklan.  
 Gray, Alex. C. E.  
 Griffiths, Edward H.  
 Hall, Harry Baker.  
 Halsted, H. C.  
 Haslam, W. A.  
 Haslett, William John Handfield.  
 Hassell, Gray.  
 Hector, William.  
 Henderson, Jane B.  
 Henderson, P. J.  
 Hennan, George.  
 Hewat, Matthew L.  
 Hewitt, D. Walker.  
 Hicks, John A., jun.  
 Hitchings, Robert.  
 Holmes, William.  
 Horton, James Henry.  
 Hotchkis, R. D.  
 Howden, Robert.  
 Hughes, Robert.  
 Hutchinson, P. J.  
 2 Hyslop, Thos. B.  
 Ingram, Peter R.  
 Jagannadhan, Annie W.  
 Johnston, John M.  
 Kelly, Francis.  
 Kelso, Alexander.  
 Kelson, W. H.  
 Ker, Claude B.  
 Kerr, Alexander L.  
 Keyt, Frederick.  
 King, David Barty.  
 King, Frederick Truby.  
 Laing, C. A. Barclay.  
 Laing, J. H. W.  
 Law, Thomas Bryden.  
 Leeper, Richard B.  
 Leslie, R. Murray.  
 Livesay, Arthur W. Bligh.  
 Livingstone, John.  
 Lloyd, R. H.  
 Low, Alexander.  
 McAllum, Stewart.  
 Macdonald, David.  
 Macdonald, G. B. Douglas.  
 Macdonald, John.  
 Macevoy, Henry John.
- McGregor, George.  
 MacInnes, Ian Lamont.  
 Mackenzie, Henry J.  
 Mackenzie, John Cumming.  
 Mackenzie, William H.  
 Mackenzie, William L.  
 Mackie, George.  
 McLean, H. J.  
 Macmillan, John.  
 5 Macnaughton, Geo. W. F.  
 Macneice, J. G.  
 Macpherson, John.  
 Macvean, Donald A.  
 Mallannah, Sreenagula.  
 Marr, Hamilton C.  
 Marsh, Ernest L.  
 Martin, A. A.  
 Martin, A. J.  
 Martin, Wm. Lewis.  
 Masson, James.  
 Meikle, T. Gordon.  
 Melville, Henry B.  
 Middlemass, James.  
 Mitchell, Alexander.  
 Mitchell, Charles.  
 Moffett, Elizabeth J.  
 Monteith, James.  
 Moore, Edward Erskine.  
 1 Mortimer, John Desmond Ernest.  
 Murison, Cecil C.  
 Myers, J. W.  
 Nair, Charles R.  
 Nairn, Robert.  
 Neil, James.  
 Nixon, John Clarke.  
 Nolan, Michael James.  
 Norton, Everitt E.  
 Orr, David.  
 Orr, James.  
 Orr, J. Fraser.  
 Oswald, Landel R.  
 Paget, A. J. M.  
 Parker, William A.  
 Parry, Charles P.  
 Patterson, Arthur Edward.  
 Patton, Walter S.  
 Paul, William Moncrief.  
 Pearce, Walter.  
 Penfold, William James.  
 Philip, James Farquhar.  
 Philip, William Marshall.  
 Pieris, William C.  
 Pilkington, Frederick W.  
 Pitcairn, John James.  
 Porter, Charles.  
 Price, Arthur.  
 Pring, Horace Reginald.  
 Rainy, Harry, M.A.  
 Ralph, Richard M.  
 Rannie, James.  
 4 Raw, Nathan.  
 Reid, Matthew A.

- Renton, Robert.  
 Rice, P. J.  
 Rigden, Alan.  
 Ritchie, Thomas Morton.  
 Rivers, W. H. R.  
 8 Robertson, G. M.  
 Robson, Francis Wm. Hope.  
 Rorie, George A.  
 Rose, Andrew.  
 Rowand, Andrew.  
 Rudall, James Ferdinand.  
 Rust, James.  
 Rust, Montague.  
 Rutherford, J. M.  
 Sawyer, Jas. E. H.  
 Scott, George Brebner.  
 Scott, J. Walter.  
 Scott, William T.  
 Sheen, Alfred W.  
 Simpson, John.  
 Simpson, Samuel.  
 Skae, F. M. T.  
 Skeen, George.  
 Skeen, James H.  
 Slater, William Arnison.  
 Smith, Percy.  
 Smyth, William Johnson.  
 Snowball, Thomas.  
 Soutar, James G.  
 Sproat, J. H.  
 Stanley, John Douglas.  
 Staveley, William Henry Charles.  
 Steel, John.  
 Stephen, George.  
 Stewart, William Day.  
 Stoddart, John.  
 9 Stoddart, William Hy. B.  
 Strangman, Lucia.  
 Strong, D. R. T.  
 Stuart, William James.  
 Symes, G. D.  
 Thompson, George Matthew.  
 Thomson, Eric.  
 Thomson, George Felix.  
 Thorpe, Arnold E.  
 Trotter, Robert Samuel.  
 Turner, W. A.  
 Umney, W. F.  
 Walker, James.  
 Warde, Wilfred B.  
 Waterston, Jane Elizabeth.  
 Watson, George A.  
 Welsh, David A.  
 West, J. T.  
 Whitwell, Robert R. H.  
 Wickham, Gilbert Henry.  
 Will, John Kennedy.  
 Williams, D. J.  
 Williamson, A. Maxwell.  
 4 Wilson, G. R.  
 Wilson, James.  
 Wilson, John T.  
 Wilson, Robert.  
 Wood, David James.  
 Wright, Alexander, W. O.  
 Yeates, Thomas.  
 Yeoman, John B.  
 Young, D. P.  
 Younger, Henry J.  
 Zimmer, Carl Raymond.

- 1 To whom the Gaskell Prize (1887) was awarded.  
 2 To whom the Gaskell Prize (1889) was awarded.  
 3 To whom the Gaskell Prize (1890) was awarded.  
 4 To whom the Gaskell Prize (1892) was awarded.  
 5 To whom the Gaskell Prize (1895) was awarded.  
 6 To whom the Gaskell Prize (1896) was awarded.  
 7 To whom the Gaskell Prize (1897) was awarded.  
 8 To whom the Gaskell Prize (1900) was awarded.  
 9 To whom the Gaskell Prize (1901) was awarded.

**D. STEWART & CO.,**

**GENERAL DRAPERY, CLOTHING AND BEDDING CONTRACTORS**  
WITH COUNTY COUNCILS, BOARDS OF GUARDIANS, COMMITTEES OF  
ASYLUMS, HOSPITALS AND SCHOOLS.

Blankets	Furniture	Shirtings
Bedsteads	Flocks	Sheetings (Cotton)
Bedding	Haberdashery	Sheetings (Linen)
Calicoes	Hessians	Table Linens
Carpets	Hollands	Towels
Clothing	Hosiery	Towelling
Dress Materials	Linoleum	Waterproof
Flaxens	Pillow Linens	Sheeting
Flannels	Prints	Window Holland

D. S. & Co. at present hold Contracts with many of the largest  
Institutions in London and the Provinces.

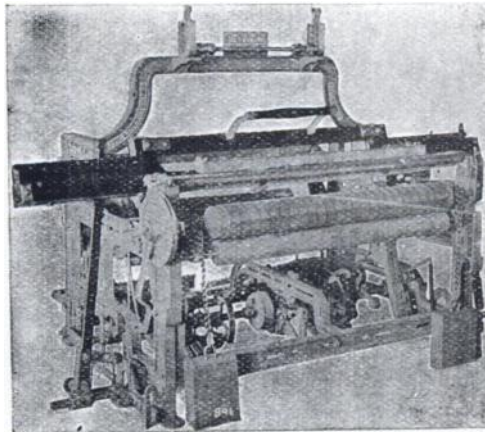
**TENDERS INVITED.**

**D. STEWART & CO.,**  
65, WATLING STREET, LONDON, E.C.

Address—"Centralize, London." Telephone—521 Bank.

**PATENT AUTOMATIC HANDLOOM**

ALL MOTIONS CONTROLLED BY ONE ACTION.



SUITABLE FOR  
LUNATIC ASYLUMS, etc

**Robert Hall**  
**and Sons,**  
**Bury, Ltd.**

**BURY,**  
**LANCASHIRE.**

ALSO MAKERS OF VARIOUS  
KINDS OF

**HANDLOOMS**

FOR

**TECHNICAL SCHOOLS, COTTAGE INDUSTRIES, ETC.**



# **ATKINSON & CO.,**

**GOVERNMENT CONTRACTORS,**

**198, 200, 202, 204, 206, 208, 210, 212,  
WESTMINSTER BRIDGE ROAD, LONDON,**

Have the honour to hold some of the largest Contracts in the Kingdom from Asylums, Unions, Hospitals, and Government Departments. The magnitude of their Contracts enables them to employ Manufacturers solely for their demands, thus affording a direct charge to the Consumer.

NUMEROUS SPECIALITIES IN

**HOSPITAL BEDSTEADS, CHAIRS, SEATS, MATTRESSES, LOCKERS,**  
&c. &c.

**NAPIER MATTING, LINOLEUMS, AND VARIOUS FLOOR COVERINGS**

Made in Special Widths and Qualities to meet exceptional wear.

**"ATKINSON'S" PINE FIBRE MATTRESS** is specially recommended because of its healthful and antiseptic properties.

PRICES ON APPLICATION.

---

**ATKINSON & CO.** undertake to supply any quantity of Goods as specified below by the quarter, half-year, or year, viz.:

**Bedsteads in Wood or Iron, Iron Bedsteads with Patent Spring Mesh Bottoms, Woven Wire and other Mattresses, Coir, Fibre, Horsehair, Flocks, and every other Material for Bedding.**

**Blankets, Rugs, Counterpanes.**

**Sheeting, Waterproof ditto.**

**Flannels, Calicoes, Prints, Woollen Cloths of all qualities.**

**Corduroys, Fustians, &c.**

**Men and Women's Under and Upper Clothing.**

**Ready-made Garments, in all Sizes and for both Sexes.**

**Hats, Caps, Bonnets, &c.**

**Hosiery and Haberdashery.**

**Uniforms, &c.**

---

*FURNITURE, CARPETS, and every Requisite supplied on the Shortest Notice for Board Rooms, Offices, Masters' Houses, &c.*

**ILLUSTRATED CATALOGUES AND ESTIMATES FREE.**

Secretaries and Clerks of Institutions are respectfully requested, when issuing Contracts, to forward a Form of Tender to ATKINSON & Co.

**SPECIAL CATALOGUE POST FREE ON APPLICATION.**



# THE THYROID TREATMENT

and the Preparations Manufactured by  
ALLEN & HANBURYS LTD.

**Myxœdema.**—The relief afforded to cases of Myxœdema by the use of the Thyroid Gland during the last five years has marked a totally new departure in the history of medicine. We are beginning to understand the physiological importance of Internal Secretions to the animal economy.

Myxœdema has been recognised as long ago as 1874 by Sir Wm. Gull as a distinct disease, and before that time it had been found that animals invariably succumbed after total extirpation of the Thyroid.

Cretinism, too, had long been recognised to be connected with congenital absence or deficiency in the glandular structure of the Thyroid.

Time enough has now elapsed to prove that those cases of Myxœdema which have been restored to health maintain that condition as long as they continue to take the gland or efficient preparation of its extract.

**Sporadic Cretinism.**—As regards Sporadic Cretinism, we cannot do better than refer the reader to an original article which appeared in the *Lancet*, with Photographs, by W. W. O—, M.D. Oxon., M.R.C.P. London, November 4th, 1893, p. 1113.

All these cases were treated by Allen and Hanburys' Thyroidin Tablets. The results are perhaps more remarkable than those obtained in the allied condition of Myxœdema. The writer observes that these Preparations have given entire satisfaction. The Photographs speak for themselves.

The success attending the use of Thyroid Extract in the Myxœdematous condition of the skin and its appendages has suggested its employment in various skin lesions.

**Psoriasis.**—Very good results have been attained in some cases of obstinate psoriasis by using Thyroidin Tablets.

In a recent number of the *Lancet* three of these cases are reported. After treatment with iodide of potassium and arsenic internally, and chrysophanic acid ointment locally, showed no improvement, but, on the other hand, the disorder was in some cases aggravated, developing a general dermatitis of the face with febrile disturbance.

But on the treatment being changed, and TABLETS OF THYROID GLAND (ALLEN AND HANBURYS') being administered, the writer observes:

Case 1.—"The improvement was very striking. . . the scales were completely gone, and all that was left was a slight discoloration of the skin where the disease had appeared."

Case 2.—"The scalp and limbs were nearly clear. . . The patient, who has suffered from the disease for nineteen years past, has had no discomfort from the remedy, and says that nothing has ever acted so rapidly upon his disease."

Case 3.—"The result was astonishing, for in three days there was a marked improvement, and no further spread of the disease had taken place. No discomfort was experienced from the remedy."

For full details of the above quotations see the *Lancet*, January 6th, 1894, p. 19.

Whilst formerly liquid extracts and the raw gland were used, ALLEN AND HANBURYS were the first to offer the active principles of the Thyroid Gland in the compressed form, which is now the favourite mode of administration. The glands are dissected and carefully examined and separated from all blood, fat, and inert tissue, which readily decompose and produce gastric disturbances, vomiting, &c., and which give to some preparations on the market a most repulsive smell, especially when they have been kept for a short time.

## THYROIDIN TABLETS

Readily disintegrate when swallowed, and from their shape and size are taken without difficulty. If preferred, they may be dissolved in a little water before being swallowed.

One Tablet equals 5 grs. of Gland. Dose: 1 or 2.

## THYROIDIN CACHETS

Contain 5 grs. of Thyroidin in each. Dose: 1 or 2. A very suitable and convenient mode of taking Thyroidin.

## ELIXIR THYROIDIN

Is a very palatable, slightly sweet preparation, of which one fluid ounce represents one Gland (average). It will be found to keep well without change. Dose: 1 to 4 fluid drachms.

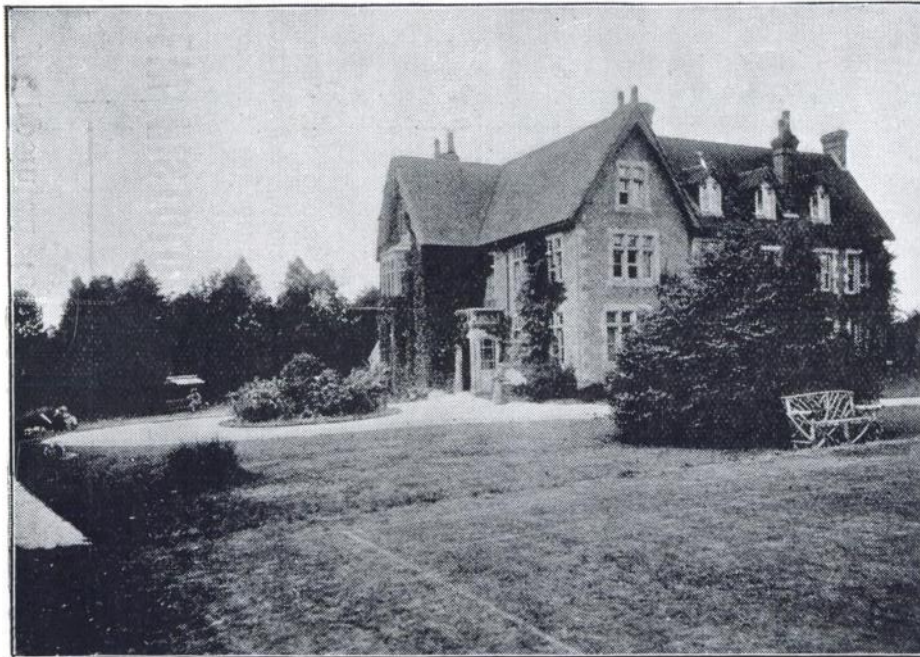
The above are put up in 1s., 2s. 6d., and 4s. 6d. packages (retail), or 8s., 21s., and 40s. per doz. to the Profession.

SAMPLES SUPPLIED TO THE PROFESSION ON APPLICATION.

ALLEN & HANBURYS LTD.,  
Plough Court, Lombard Street, LONDON.

**“SOUTH BEACON,” HADLOW DOWN, BUXTED, SUSSEX.**

**A Home for  
the  
Temporary  
Care of  
Mental  
Invalids  
(Gentlemen  
only)  
requiring  
Treatment  
away from  
their own  
homes,  
but who are  
not ill  
enough to be  
Certified.**



*For full particulars apply to PHILIP H. HARMER.*

**Thirteen Acres  
of Garden and  
Recreation  
Grounds.  
Riding and  
Driving,  
Golf, Cricket,  
Lawn Tennis,  
Croquet and  
Bowls,  
Gardening.  
Four Acres of  
Wired-in  
Grass Poultry  
Runs.  
Cows kept.  
—:o:—  
Suitable  
Gentlemen  
Companions  
and men  
Servants  
provided.**

# J. Swift & Son,

**MANUFACTURING OPTICIANS,**

Solely appointed to H.M. Dept., War Office.

---

## **NEW HISTOLOGICAL MICROSCOPE,**

with coarse adjustment by rack and pinion, fine adjustment by micrometer screw,  $\frac{2}{3}$ " and  $\frac{1}{6}$ " objectives, one ocular and iris diaphragm, in Cabinet.

**£6 15s.**

Double nose-piece as figured (extra).

**15s.**

Microscope as above, but with sliding tube, coarse adjustment.

**£5 5s.**

These microscopes have been supplied to the following medical schools, viz.—St. Bartholomew's, St. Mary's, Guy's, Westminster, Charing Cross, Middlesex, London Hospital, University College, and most of the provincial Colleges.

---

**Illustrated Circular on Application.**

---

## **University Optical Works,**

**81, TOTTENHAM COURT ROAD, W.**