


## Review Article

# Current Concepts of Mixed Pathologies in Neurodegenerative Diseases

Shelley L. Forrest<sup>1</sup> and Gabor G. Kovacs<sup>2,3,4</sup> 

<sup>1</sup>Dementia Research Centre, Macquarie Medical School, Faculty of Medicine, Health and Human Sciences, Macquarie University, Sydney, Australia, <sup>2</sup>Tanz Centre for Research in Neurodegenerative Disease, University of Toronto, Toronto, Ontario, Canada, <sup>3</sup>Department of Laboratory Medicine and Pathobiology, Department of Medicine, University of Toronto, Toronto, Ontario, Canada and <sup>4</sup>Laboratory Medicine Program & Krembil Brain Institute, University Health Network, Toronto, Ontario, Canada

**ABSTRACT:** Neurodegenerative diseases are a pathologically, clinically and genetically diverse group of disorders without effective disease-modifying therapies. Pathologically, these disorders are characterised by disease-specific protein aggregates in neurons and/or glia and referred to as proteinopathies. Many neurodegenerative diseases show pathological overlap with the same abnormally deposited protein occurring in anatomically distinct regions, which give rise to specific patterns of cognitive and motor clinical phenotypes. Sequential distribution patterns of protein inclusions throughout the brain have been described. Rather than occurring in isolation, it is increasingly recognised that combinations of one or more proteinopathies with or without cerebrovascular disease frequently occur in individuals with neurodegenerative diseases. In addition, complex constellations of ageing-related and incidental pathologies associated with tau, TDP-43, A $\beta$ ,  $\alpha$ -synuclein deposition have been commonly reported in longitudinal ageing studies. This review provides an overview of current classification of neurodegenerative and age-related pathologies and presents the spectrum and complexity of mixed pathologies in community-based, longitudinal ageing studies, in major proteinopathies, and genetic conditions. Mixed pathologies are commonly reported in individuals >65 years with and without cognitive impairment; however, they are increasingly recognised in younger individuals (<65 years). Mixed pathologies are thought to lower the threshold for developing cognitive impairment and dementia. Hereditary neurodegenerative diseases also show a diverse range of mixed pathologies beyond the proteinopathy primarily linked to the genetic abnormality. Cases with mixed pathologies might show a different clinical course, which has prognostic relevance and obvious implications for biomarker and therapy development, and stratifying patients for clinical trials.

**RÉSUMÉ :** Concepts actuels de pathologies mixtes dans les maladies neurodégénératives. Les maladies neurodégénératives constituent un groupe de troubles diversifiés sur les plans pathologique, clinique et génétique pour lesquels on ne dispose d'aucun traitement modificateur de la maladie qui soit efficace. Du point de vue pathologique, ces troubles se caractérisent par des agrégats protéiques spécifiques de la maladie dans les neurones et/ou les cellules gliales; on les appelle *protéinopathies*. De nombreuses maladies neurodégénératives présentent des recouvrements pathologiques, soit la formation des mêmes dépôts anormaux de protéines dans des régions anatomiques différentes, ce qui donne lieu à des phénotypes cliniques particuliers de symptômes moteurs et cognitifs. Des schémas de distribution séquentiels d'inclusions de protéines dans différentes zones du cerveau ont été décrits. On constate de plus en plus que ces protéinopathies, plutôt que d'être isolées, s'unissent à deux ou plusieurs, et peuvent s'accompagner ou non d'une maladie vasculaire cérébrale, phénomène qui se produit souvent chez les personnes atteintes de maladies neurodégénératives. En outre, des groupes complexes de pathologies fortuites et liées au vieillissement, associées à des dépôts de protéines tau, TDP-43, A $\beta$  et  $\alpha$ -synucléine, sont souvent rapportés dans des études longitudinales sur le vieillissement. Ainsi, le compte rendu donne un aperçu de la classification actuelle des pathologies neurodégénératives, liées à l'âge, et présente le spectre et la complexité des pathologies mixtes dans les études longitudinales sur le vieillissement menées dans la collectivité, qui portent sur les troubles génétiques et les protéinopathies d'importance. Des pathologies mixtes sont couramment rapportées chez des patients de plus de 65 ans présentant ou non une atteinte cognitive, mais elles sont également de plus en plus observées chez les personnes plus jeunes (moins de 65 ans). Les pathologies mixtes abaisseraient le seuil d'apparition de troubles cognitifs et de démence. Les maladies neurodégénératives héréditaires se manifestent aussi sous diverses formes de pathologies mixtes et ne se limitent pas à la protéinopathie principalement liée à l'anomalie génétique. Les patients atteints de pathologies mixtes pourraient présenter une évolution clinique différente, ce qui a une incidence sur le pronostic et des conséquences importantes tant dans l'élaboration de traitements et de biomarqueurs que dans le classement des patients dans les essais cliniques.

**Keywords:** Cerebrovascular disease; Mixed pathology; Neurodegenerative disease; Proteinopathy

(Received 31 October 2021; final revisions submitted 18 March 2022; date of acceptance 21 March 2022; First Published online 31 March 2022)

**Corresponding author:** Gabor G. Kovacs, MD, PhD, FRCPC, Tanz Centre for Research in Neurodegenerative Disease (CRND), University of Toronto, Krembil Discovery Tower, 60 Leonard Ave, Toronto, ON, M5T 0S8, Canada. Email: [gabor.kovacs@uhnresearch.ca](mailto:gabor.kovacs@uhnresearch.ca)

**Cite this article:** Forrest SL and Kovacs GG. (2023) Current Concepts of Mixed Pathologies in Neurodegenerative Diseases. *The Canadian Journal of Neurological Sciences* 50: 329–345, <https://doi.org/10.1017/cjn.2022.34>

© The Author(s), 2022. Published by Cambridge University Press on behalf of Canadian Neurological Sciences Federation. This is an Open Access article, distributed under the terms of the Creative Commons Attribution licence (<https://creativecommons.org/licenses/by/4.0/>), which permits unrestricted re-use, distribution and reproduction, provided the original article is properly cited.

## Introduction: Current Concepts of Neurodegenerative Diseases

Demographic changes have led to an increased prevalence of age-related brain disorders; however, no drugs are approved for clinical use that halt or even slow the disease process. Furthermore, there are no reliable markers of the earliest stages of disease, which would be essential to provide a window for preventive or neuroprotective interventions before the onset of clinical symptoms. A major group of age-related brain disorders are neurodegenerative diseases that are characterised by selective regional neuronal loss and dysfunction of neuronal and glial networks, which correlate to the diverse clinical phenotypes observed in patients. Discoveries over the past decades have recognised that a crucial feature of neurodegenerative diseases is the deposition of abnormal protein aggregates in neurons and/or glia, which are considered sufficient to cause disease. Recognition that biochemical modification/s of these proteins are central to the pathogenesis of neurodegenerative diseases has served as the foundation for developing disease-specific biomarkers that capture and differentiate the main type/s of protein abnormality responsible for neurodegenerative diseases, some of which are used in clinical practice. Further advances in biomarker development will provide much needed opportunities to confirm the clinical diagnosis in patients, track disease progression, better stratify patients for clinical trials and monitor the effects of therapeutic intervention.<sup>1,2</sup> However, despite these advances, there are no biomarkers to preclinical disease, which would allow predication of neurodegenerative disease conditions or combined neurodegenerative diseases.

Major concepts to understand neurodegenerative disease can be summarised as follows:

1. To emphasise the role of abnormally deposited proteins in the pathogenesis, neurodegenerative diseases are also referred to as proteinopathies. Recent advances in deciphering the molecular pathological, biochemical, genetic and structural properties of protein aggregates have led to the reclassification of these conditions. This allows more accurate diagnosis and classification of neurodegenerative diseases, and the potential development of sensitive biomarkers and therapeutic strategies not previously considered for these disorders.
2. Significant advances in disease classification and understanding the pathogenesis of neurodegenerative diseases have emerged from key studies investigating the role/s of proteinaceous infectious particles (prion),<sup>3</sup> cell-to-cell propagation and disease-specific protein strains that are currently discussed for various neurodegenerative diseases. This implies that a conformational change of a physiological protein leads to abnormal filaments that can convert further physiological protein molecules into an abnormal structure. This concept is the basis of the protein misfolding cyclic amplification and has been used to develop a diagnostic procedure called real-time quaking induced conversion (RT-QuIC).<sup>4-7</sup> The structure of pathological filaments and the seeding behaviour of the same protein can be associated with distinct clinicopathological phenotypes.

Experimental observations have revealed different mechanisms leading to cell-to-cell propagation of pathological forms of proteins.<sup>8</sup> This has been complemented by the recognition of sequential involvement of brain regions in neuropathology leading to the definition of stages and phases of diseases.<sup>9</sup> As a translation to the clinical practice, the concept of preclinical

or pre-symptomatic disease has been introduced.<sup>10,11</sup> Further observations show that these proteins may deposit in peripheral organs and provide the opportunity for peripheral tissue-based diagnostics.<sup>12</sup>

The concept of strains of disease has been discussed for various neurodegenerative proteinopathies.<sup>13</sup> Accordingly, various protein folds show distinct propagation patterns in the brain (and in experimental models) leading to heterogenous clinicopathological phenotypes associated with the same proteins and subsequent subtyping of neurodegenerative diseases. Subclassification might differ for the distinct proteins and include genetic polymorphisms or biochemical alterations of the specific protein, the structure of protein filaments or be solely based on morphological differences in the deposition of pathologically altered proteins in the brain.<sup>14</sup>

3. Over the past decade, it is increasingly recognised that one or more proteinopathies and/or cerebrovascular disease (CVD) occur in individuals with neurodegenerative diseases, rather than occurring in isolation.<sup>15,16</sup> Large autopsy studies have demonstrated that the prevalence of age-related proteinopathies and CVD increase in prevalence with advancing age and are commonly found in individuals aged >65 years and in a range of neurodegenerative diseases, and careful discrimination is required to differentiate these from neurodegenerative proteinopathies.

This review provides an overview of the current classification of neurodegenerative diseases and age-related pathologies and presents the spectrum and complexity of mixed pathologies and their clinicopathological relevance. To describe cases with the presence of multiple neurodegenerative proteinopathies or cases with mixed neurodegenerative pathologies and another type of pathology including age-related pathologies and/or CVD, collectively, the term "mixed pathology" is used in this review. Mixed pathologies are generally considered to lower the threshold for cognitive impairment and dementia. In addition, mixed pathologies add to the complexity of how neurodegenerative diseases are classified and have obvious implications for concepts surrounding disease pathogenesis and determining the clinicopathological relationship, biomarkers and neuroimaging studies.

## Classification of Neurodegenerative Diseases

Neurodegenerative diseases are characterised histologically by neuronal and synaptic loss, associated with activated microglia and reactive astrogliosis, with the severity and distribution of selective neurodegeneration correlating with the diverse clinical phenotypes observed in patients. Early studies established the presence of a neuroinflammatory response in Alzheimer's disease (AD),<sup>17</sup> which is also observed in Lewy body diseases (LBD), frontotemporal dementia (FTD) and other neurodegenerative diseases.<sup>18</sup> However, limited studies have focused on the neuroinflammatory response in cases with mixed pathologies and whether combined pathologies are likely to accelerate this response in affected brain regions remains unknown. These are likely to be areas of future interest given the prevalence of mixed pathologies observed in longitudinal aging and neurodegenerative cohorts.

The classification of neurodegenerative and age-related proteinopathies is based on the brain regions and cell type/s affected, the main abnormally deposited protein/s, and disease aetiology if known, e.g., the presence of a genetic abnormality.<sup>14</sup> Together,

the protein abnormalities and cell types affected determine the specific regional and cellular vulnerabilities in these disorders. The molecular neuropathological classification and diagnosis of neurodegenerative diseases are based on the following:<sup>14</sup>

- A. The anatomical distribution and severity of neuronal loss and gliosis. Additional features including spongiform change and vascular lesions as observed with histological stains are also considered. A peculiar pattern of neuronal degeneration is called frontotemporal lobar degeneration (FTLD) that is associated with various clinical presentations summarised under the clinical umbrella term FTD. Importantly, neurodegenerative proteinopathies associated with FTLD are further classified as FTLD-tau, -TDP, FET or UPS.<sup>19,20</sup> In FTLD, these proteins converge on the same anatomical brain regions and cellular populations to produce similar clinical phenotypes. Furthermore, multiple pathological subtypes within each proteinopathy are recognised that are associated with heterogeneous biochemical properties and cell type/s and/or cellular compartment affected. This complex diversity in the main proteinopathy deposited with the same clinical phenotype is not observed to same extent in other neurodegenerative diseases.
- B. The presence of intracellular and/or extracellular protein deposits in disease-specific anatomical regions and cell type/s, which are evaluated by immunohistochemical stains. The following are the major proteins associated with almost all adult-onset sporadic and genetic neurodegenerative diseases and are summarised in Figures 1 and 2:
1. **Tau**, a microtubule-associated protein encoded by the microtubule-associated protein tau (*MAPT*) gene. Tau is normally expressed in neurons (and only expressed in trace amounts in astrocytes and oligodendroglia (<http://www.brainrnaseq.org/>)) and has critical functions in the assembly and stabilisation of microtubules, regulating transport and is known to interact with other cellular structures.<sup>21,22</sup> Six isoforms of tau are expressed in the adult human brain from alternate splicing of exons 2, 3 and 10 of the *MAPT* gene. Exclusion of exon 10 generates three isoforms with three microtubule repeat domains (**3-repeat tau**), and inclusion of exon 10 generates three isoforms with four microtubule repeat domains (**4-repeat tau**).<sup>23</sup> Currently, Tau-proteinopathies are further classified based on their biochemical properties:<sup>24</sup>
    - i. 3-repeat tau-immunopositive inclusions predominantly in neurons,
    - ii. 4-repeat tau-immunopositive inclusions in neurons and glia and
    - iii. 3-repeat and 4-repeat tau-immunopositive inclusions predominantly in neurons.
  2.  **$\alpha$ -Synuclein**, encoded by the  $\alpha$ -synuclein (*SCNA*) gene, is a 140 amino acid protein abundantly expressed in the brain.  $\alpha$ -Synuclein is the main component of filamentous neuronal and glial inclusions characteristic of LBD and multiple system atrophy (MSA), respectively.<sup>25,26</sup>
  3. TAR DNA-binding protein 43 (**TDP-43**), a highly conserved 494 amino acid nuclear protein encoded by the TDP (*TARDBP*) gene. TDP-43 is normally expressed in neuronal and glial nuclei and has important functions in transcription and splicing regulation and a number of

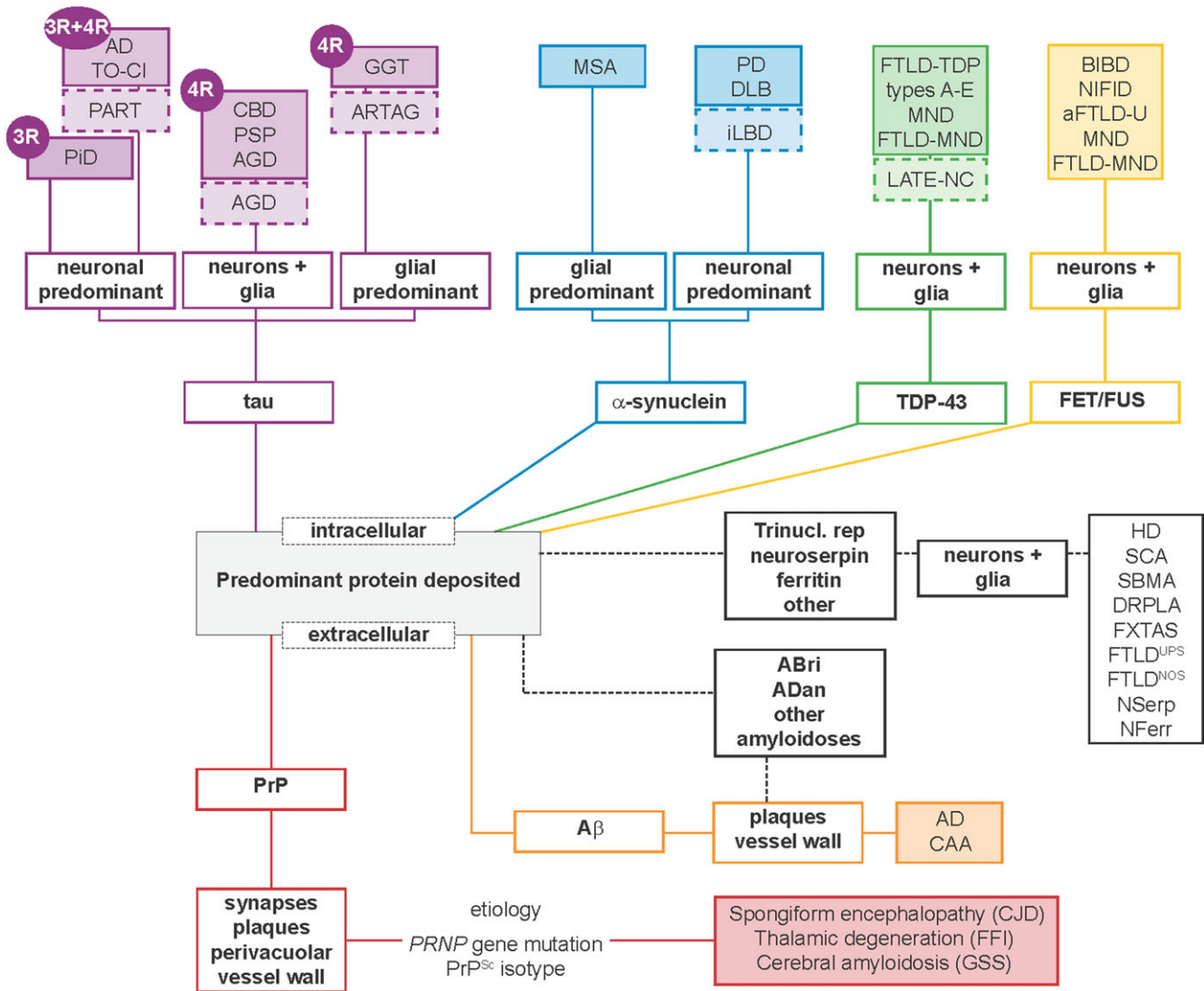
cellular processes including mRNA stability.<sup>27</sup> Under pathological conditions, TDP-43 abnormally redistributes from the nucleus to the cytoplasm and forms aggregates. Further genetic abnormalities are also associated with TDP-43 pathology; the most frequent are associated with the progranulin (*GRN*) gene and the chromosome 9 open reading frame 72 (*C9orf72*) gene.<sup>20</sup>

4. **FET** proteins, a family of RNA-binding proteins with critical functions in regulating gene expression and mRNA/microRNA processing, which include fused in sarcoma (**FUS**), Ewing's sarcoma RNA-binding protein 1 (*EWSR1*) and TATA-binding protein-associated factor 15 (*TAF15*).<sup>28</sup> FET/FUS-proteinopathies comprise a small proportion of cases,<sup>28</sup> and currently, mutations in FET genes are not considered to be a leading aetiology. However, mutations in the *FUS* gene have been reported in familial amyotrophic lateral sclerosis (ALS).<sup>20,29</sup>
5. Amyloid- $\beta$  (**A $\beta$** ) derives from the amyloid precursor protein (APP) with the C-terminus ending at amino acids 40 (A $\beta$ <sub>40</sub>) or 42 (A $\beta$ <sub>42</sub>). Both isoforms are found in A $\beta$  plaques. Other genes associated with A $\beta$  deposition and familial Alzheimer's disease (AD) include the presenilin-1 (*PSEN1*) and presenilin-2 (*PSEN2*) genes.<sup>30</sup> A $\beta$  can also accumulate in vessel walls in cerebral amyloid angiopathy (CAA).<sup>31</sup>
6. Prion protein (**PrP**) is a 253 amino acid protein encoded by the *PRNP* gene. Prion diseases are classified primarily based on their sporadic, genetic or acquired aetiology and further based on biochemical/genetic features and morphologically as transmissible spongiform encephalopathies (i.e., various aetiological forms of Creutzfeldt-Jakob disease, kuru), thalamic degeneration (i.e., fatal familial insomnia), or PrP cerebral amyloidoses (i.e., Gerstmann-Sträussler-Scheinker disease and PrP cerebral amyloid angiopathy).<sup>32</sup>

In addition to these major neurodegenerative proteinopathies, there are further neurodegenerative diseases where the proteinaceous aggregates responsible for disease are yet to be identified, however, these comprise a small proportion of cases.<sup>14</sup> Furthermore, there are many hereditary neurodegenerative diseases that are characterised by other abnormal proteinaceous aggregates. For example, the trinucleotide repeat disorders (e.g. Huntington's disease, some spinocerebellar ataxias and spinal and bulbar muscular atrophy, atrophin-1), and rare, inherited disorders including neuroserpinopathy, ferritin-related neurodegenerative diseases, and familial cerebral amyloidosis.<sup>14,33</sup>

### Recent Advances on the Stratification of Neurodegenerative Diseases

In the near future, a further stratification level incorporating unique self-seeding behaviour and structure of pathological protein filaments will add further layers to the classification of neurodegenerative diseases. Indeed, recent studies have identified unique structures of protein filaments by cryo-electron microscopy (cryo-EM) (for review see),<sup>34</sup> as described for A $\beta$ ,<sup>35,36</sup> and allows further subtyping for example of major tauopathies,<sup>37</sup> or better understanding the differences in disease course between cases within the same neuropathology group, as exemplified by observations in  $\alpha$ -synucleinopathies.<sup>38</sup> Despite less cryo-EM data for human tissue-derived TDP-43,<sup>39</sup> or only currently initial structural studies provide a basis for future attempts.<sup>34</sup> The concept of strains is also



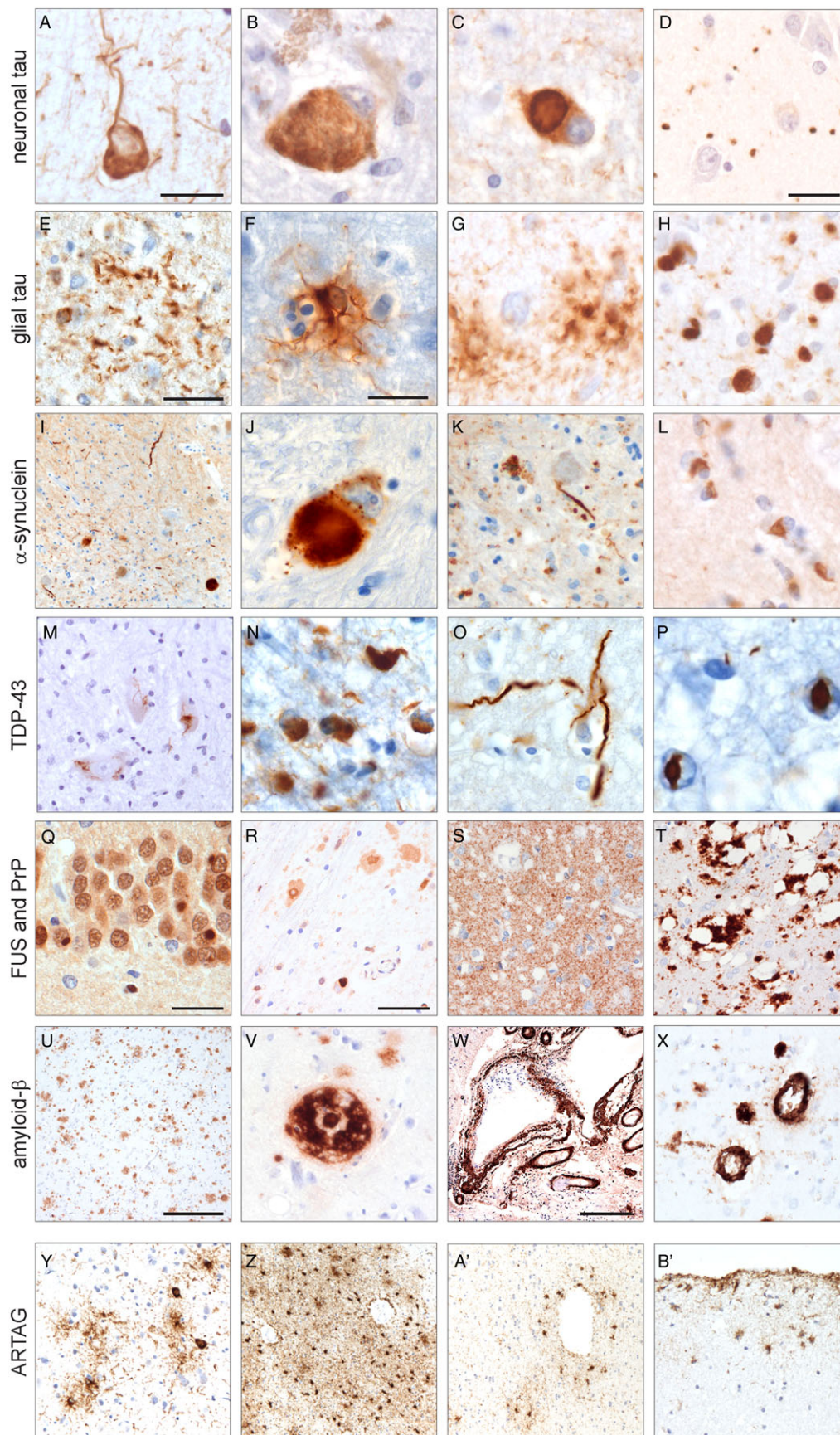
**Figure 1:** Classification of the major neurodegenerative diseases and subtypes, and ageing-related pathologies by the main protein deposited. aFTLD-U = atypical frontotemporal lobar degeneration with ubiquitin inclusions; AD = Alzheimer's disease; AGD = argyrophilic grain disease; ARTAG = ageing-related tau astrogliaopathy; BIBD = basophilic inclusion body disease; CAA = cerebral amyloid angiopathy; CBD = corticobasal degeneration; DLB = dementia with Lewy bodies; DRPLA = dentatorubral-pallidolusian atrophy; FET/FUS = FET family of protein, including fused in sarcoma; FTLN = frontotemporal lobar degeneration; FTLN<sup>NOS</sup> = FTLN not otherwise specified; FTLN<sup>UPS</sup> = FTLN with ubiquitin-proteasome system; FXTAS = fragile X-associated tremor/ataxia syndrome; GGT = globular glial tauopathy; HD = Huntington's disease; iLBD = incidental Lewy body disease; LATE-NC = limbic-predominant age-related TDP-43 encephalopathy-neuropathological change; MND = motor neuron disease; MSA = multiple system atrophy; NFerr = hereditary ferritinopathy; NSerp = neuroserpinopathy; NIFID = neuronal intermediate filament inclusion disease; PART = primary age-related tauopathy; PD = Parkinson's disease; PiD = Pick's disease; PSP = progressive supranuclear palsy; PrP = prion protein; SBMA = spinal-bulbar muscular atrophy; SCA = spinocerebellar ataxia; TDP-43 = TAR DNA-binding protein 43; TO-CI = Tangle-only associated cognitive impairment. Ageing-related conditions are indicated by lighter coloured boxes with dashed borders. The most frequent mixed pathologies include AD-neuropathological change (tau and A $\beta$ ), PART, AGD and ARTAG (tau), LATE-NC (TDP-43) and Lewy body disorders ( $\alpha$ -synuclein).

increasingly considered for human disease subtyping.<sup>40,41</sup> As a provocative concept, combined proteinopathies might represent distinct "strain-like" features from those associated with conditions accumulating only one protein,<sup>42</sup> which might open further aspects for classification.

### Disease Propagation and Pathological Staging

Disease progression is characterised by the spreading of pathological aggregates and neuronal degeneration to an increasing number of brain regions over time, from one vulnerable region to the next. For most neurodegenerative diseases, this is well-described and occurs in a stereotypical and hierarchical pattern of selective

regional involvement, summarised in Table 1. These studies underpin the concept that neurodegenerative proteins propagate throughout the nervous system, where disease-associated protein seeds are responsible for the initiation and spreading of protein aggregates. To date, while the majority of pathological staging studies have focused on neuron-to-neuron propagation, emerging evidence suggests that glia (astrocytes and oligodendroglia) are likely to have an important role in pathological spread throughout the brain. Defining cell-specific stages of pathological staging/disease progression, as recently described in progressive supranuclear palsy (PSP),<sup>43</sup> have important implications for understanding the earliest stages of disease, propagation and progression.



**Figure 2:** Neuropathological features of the major neurodegenerative diseases and ageing-related tau astrogliopathy. Panels a–d show neuronal tau morphologies including a neurofibrillary tangle in Alzheimer’s disease (a), globose tangle in progressive supranuclear palsy (b), Pick body in Pick’s disease (c), tau-immunopositive grains found in dendrites in argyrophilic grain disease (d). Panels e–h show characteristic glial tau-immunopositive features of FTLD-tau including astrocytic plaques in corticobasal degeneration (e), tufted astrocyte in progressive supranuclear palsy (f), globular astrocytic inclusions (g) and globular oligodendroglial inclusions (h) in globular glial tauopathy. Panels i–l show  $\alpha$ -synuclein-immunopositive pathological features characteristic of Lewy body disorders and multiple system atrophy including Lewy bodies and Lewy neurites (i–k) and glial cytoplasmic inclusions (l). Panels m–p show characteristic TDP-43-immunopositive inclusions in MND (m) and FTLD-TDP (n–p) including skein-like inclusions in the hypoglossal nucleus (m), neuronal cytoplasmic inclusions and short dystrophic neurites (n), long dystrophic neurites (o), and neuronal intranuclear inclusions (p). FUS-immunopositive inclusions in the hippocampal dentate gyrus in FTLD-FUS (q) and the anterior horn of the spinal cord in FUS-gene mutation related motor neuron disease (r). Diffuse synaptic (s) and patchy/perivacuolar (t) immunoreactivity for disease-associated PrP in sporadic Creutzfeldt-Jakob disease.  $A\beta$  diffuse (u) and neuritic (v) plaques, and  $A\beta$  deposition in vessel walls (w, x), characteristic of cerebral amyloid angiopathy. Panels y–b’ show grey matter (y), white matter (z), perivascular (a’) and subpial (b’) ageing-related tau astrogliopathy (ARTAG). Scale bar in a = 20  $\mu$ m (applies to b, c, g, h, p), in d = 20  $\mu$ m (applies to l), in e = 50  $\mu$ m (applies to i, o), in f = 30  $\mu$ m (applies to j, k, m, n), in q = 30  $\mu$ m (applies to v), w = 500  $\mu$ m, r = 50  $\mu$ m (applies to s, t, x–b’).

**Table 1:** Summary of sequential distribution patterns of protein pathology in neurodegenerative diseases and brain ageing

Proteinopathy	Protein	Disease/subtype	Hierarchical distribution pattern				
Tau and Aβ proteinopathy (Alzheimer's disease-related)	Tau (3R and 4R)	Alzheimer's disease <sup>52,111,112</sup>	Stages a-c	Locus coeruleus, magnocellular nuclei of the basal forebrain			
			Stage I	Trans-entorhinal region			
			Stage II	Entorhinal cortex			
			Stage III	Fusiform and lingual gyri, amygdala, anterior thalamus			
			Stage IV	Superior temporal gyrus			
			Stage V*	Frontal, superolateral and occipital (peristriate) regions, striatum			
			Stage VI*	Primary and secondary neocortical regions and striate area in the occipital lobe, substantia nigra			
	Aβ	Alzheimer's disease <sup>113</sup>	Phase 1	Frontal, parietal, temporal, or occipital cortices			
			Phase 2	Entorhinal region, CA1, and insular cortex			
			Phase 3	Basal ganglia, basal forebrain nuclei, thalamus, hypothalamus, white matter			
			Phase 4	Inferior olivary nucleus, reticular formation of the medulla oblongata, substantia nigra, CA4, central grey of the midbrain, superior and inferior colliculi, red nucleus			
			Phase 5	Pontine nuclei, cerebellum			
			Tau-proteinopathy	Tau (3R)	Pick's disease <sup>114</sup>	Phase 1	Frontotemporal limbic/paralimbic and neocortical regions
						Phase 2	Basal ganglia, locus coeruleus, and raphe nuclei
Phase 3	Primary motor cortex and pre-cerebellar nuclei						
Phase 4	Visual cortex						
Tau (4R)	Corticobasal degeneration <sup>115</sup> Progressive supranuclear palsy <sup>43</sup>	N/A		Severity of tau pathology across brain regions has been determined.			
		Stage 1		Subthalamic nucleus, globus pallidus, striatum: mild involvement			
		Stage 2		Subthalamic nucleus, globus pallidus, striatum: severe involvement			
		Stage 3		Frontal cortex and dentate nucleus cerebellum white matter: mild involvement			
		Stage 4		Frontal cortex and dentate nucleus cerebellum white matter: severe involvement			
		Stage 5		Occipital cortex: mild involvement			
Tau (3R and 4R)	Primary age-related tauopathy* (Tangle-only associated cognitive impairment) <sup>48,52</sup>	Stage 6	Occipital cortex: severe involvement				
		Globular glial tauopathy	N/A	Not determined			
			Argyrophilic grain disease <sup>116,117</sup>	Stage 1	Ambient gyrus		
				Stage 2	Anterior and posterior medial temporal lobe, temporal pole, subiculum, entorhinal cortex		
Stage 3	Septum, insular cortex, and anterior cingulate gyrus						
Stage 4	Neocortex and brainstem						

TDP-43-proteinopathy	TDP-43	FTLD-TDP: Type A-D (E) (bvFTD) <sup>118</sup>	Pattern I	Orbital gyri, gyrus rectus, and amygdala		
			Pattern II	Middle frontal and anterior cingulate gyri, anteromedial temporal lobe areas, superior and medial temporal gyri, striatum, red nucleus, thalamus, pre-cerebellar nuclei		
			Pattern III	Motor cortex, bulbar somatomotor neurons, spinal cord anterior horn		
			Pattern IV	Visual cortex		
	MND (ALS) <sup>119</sup>			Stage 1	Agranular motor cortex, brainstem motor nuclei of cranial nerves V, VII, and X–XII, and spinal cord $\alpha$ -motoneurons	
				Stage 2	Prefrontal neocortex (middle frontal gyrus), brainstem reticular formation, pre-cerebellar nuclei, and the red nucleus	
				Stage 3	Prefrontal (gyrus rectus and orbital gyri), postcentral neocortex and striatum	
				Stage 4	Anteromedial portions of the temporal lobe, including the hippocampus	
	TDP-43 in Alzheimer’s disease <sup>120</sup> and LATE stages 1–3 <sup>45</sup>			Stage 1	Amygdala (= LATE stage 1)	
				Stage 2	Entorhinal cortex and subiculum	
				Stage 3	Hippocampus (=LATE stage 2) and occipitotemporal cortex	
				Stage 4	Insular cortex, ventral striatum, basal forebrain and inferior temporal cortex	
				Stage 5	Substantia nigra, inferior olive and midbrain tectum	
				Stage 6	Basal ganglia and middle frontal cortex (= LATE stage 3)	
$\alpha$ -synuclein-proteinopathy	$\alpha$ -synuclein	Parkinson’s disease <sup>121</sup>	Stage 1	Dorsal IX/X motor nucleus and/or intermediate reticular zone		
			Stage 2	Caudal raphe nuclei, gigantocellular reticular nucleus, coeruleus–subcoeruleus complex		
			Stage 3	Substantia nigra pars compacta		
			Stage 4	Temporal mesocortex (trans-entorhinal region, amygdala) and allocortex (CA2-plexus)		
			Stage 5	High order sensory association areas of the neocortex and prefrontal neocortex		
			Stage 6	First order sensory association areas of the neocortex and premotor areas		
		Dementia with Lewy bodies <sup>122</sup>			Category 1	Olfactory bulb only
					Category 2	Amygdala-predominant
					Category 3	Brainstem-predominant
					Category 4	Limbic (transitional)
	Multiple system atrophy (Cerebellar type) <sup>123</sup>			Phase 1	Cerebellum, and cerebellar-brainstem connections	
				Phase 2	Pyramidal and extrapyramidal white matter	
				Phase 3	Neocortex and basal ganglia grey matter	
				Phase 4	Amygdala and hippocampus	
	Multiple system atrophy (Parkinsonian type) <sup>124</sup>			Phase 1	Striatum, lentiform nucleus, substantia nigra, brainstem white matter tracts, cerebellar subcortical white matter, and motor, midfrontal, sensory cortices	
				Phase 2	Spinal cord and thalamus	
				Phase 3	Hippocampus and amygdala	
				Phase 4	Visual cortex	

\*Note that PART pathology does not extend beyond the medial temporal lobe, therefore remains Braak NFT stage I-IV. Braak NFT stages V and VI are generally associated with the presence of A $\beta$  plaques, compatible with the diagnosis of AD neuropathological change.

Pathological staging has relevance for cases with mixed pathology, which might show a high or end stage or phase of one proteinopathy and an early stage or phase of another neurodegenerative or age-related proteinopathy. The earliest pathological stages of various neurodegenerative proteinopathies are frequently observed and reported in large autopsy studies and are considered incidental pathologies. For example, amygdala-predominant or early Braak Lewy body stages, early Braak neurofibrillary degeneration stages, and early Thal A $\beta$  phases (Table 1). The clinical relevance of incidental pathologies is largely unknown and whether these would have progressed to the neurodegenerative disease characterised by that proteinopathy is difficult to determine. In addition, the presence of ageing-related pathologies is commonly observed in neurodegenerative diseases and in the brains of elderly individuals, particularly over 65 years of age. Hierarchical pathology distribution patterns and staging schemes have recently been proposed for two common ageing-related proteinopathies, ageing-related tau astrogliaopathy (ARTAG)<sup>44</sup> and limbic-predominant age-related TDP-43 encephalopathy neuropathological change (LATE-NC) (Table 1).<sup>45</sup>

Importantly, the progression and pathological spread of these neurodegenerative and age-related pathologies occurs through synaptic and functional connectivity, rather than spatial proximity,<sup>46</sup> and appears to be more selective than observed in prion diseases. Unlike PrP, despite numerous studies that demonstrate that tau, A $\beta$  and  $\alpha$ -synuclein aggregates can propagate from human tissue to preclinical models, there is no epidemiological evidence to suggest they have similar transmissibility or pose a risk of infectivity of these diseases.<sup>47</sup>

### Common Age-Related and Incidental Pathologies

In addition to the neurodegenerative disease entities, in the ageing brain peculiar neurodegenerative pathologies, associated with tau, TDP-43, A $\beta$ ,  $\alpha$ -synuclein deposition can be seen. In isolation, these do not necessarily associate with clinical symptoms but may contribute to lowering of threshold for the development of cognitive decline.

#### Tau

- Primary ageing-related tauopathy (PART): a common age-related tauopathy in individuals > 60 years<sup>48</sup> that is characterised by Braak neurofibrillary tangle (NFT) stage  $\leq$  IV (severe hippocampal involvement) with few or an absence of A $\beta$  plaques and does not fulfill AD neuropathological criteria. In addition, the regional distribution pattern of NFTs in PART and AD differ, where a higher density of NFTs are observed in the hippocampal CA2 region in PART.<sup>49</sup> PART is found in neurologically normal individuals and individuals with cognitive impairment, and also includes Tangle-only associated cognitive impairment (TO-CI), which is also considered a subtype of FTLD-tau. PART is one of the most common age-related pathologies, and there is debate surrounding whether PART progresses to AD or TO-CI.<sup>50,51</sup> Large autopsy studies have shown that by the third decade of life, almost all individuals will show NFT development.<sup>52</sup>
- Argyrophilic grain disease (AGD): a common, predominantly age-related tauopathy characterised by argyrophilic and tau-immunopositive grains (in dendrites) and oligodendroglial coiled bodies in the medial temporal lobe.<sup>53,54</sup> Similar to PART, while AGD is a well-recognised and common age-related pathology, it is also a rare pathological subtype of FTLD-tau.<sup>55</sup>

- Ageing-related tau astrogliaopathy (ARTAG): consensus recommendations described in 2016 standardised the classification and nomenclature of tau-immunopositive astrocytes commonly found in the brains of individuals >60 years.<sup>56</sup> Identification of five ARTAG types including grey and white matter, perivascular, subpial (Figure 2) and subependymal, characterised by two astrocytic morphologies: 1) thorn-shaped and/or 2) granular fuzzy astrocytes. Classification is based on regional and sub-regional involvement, and extent of astrogliaopathy. ARTAG can be differentiated from other tau-depositing disorders and occur in isolation, but is more commonly observed as an additional co-existing pathology in a range of neurodegenerative diseases.<sup>56,57</sup> The medial temporal lobe (particularly the amygdala) and basal forebrain are predilection sites for ARTAG pathology, however, the regional distribution and type of ARTAG varies between neurodegenerative diseases and normal aging.<sup>57</sup> For example, the basal forebrain is a predilection site for ARTAG in aged individuals, lobar white matter ARTAG is frequent in AD and neocortical grey matter ARTAG is common in FTLD-tau.<sup>57</sup> In addition, different types of ARTAG are associated with different clinicopathological entities, and age at death, brain atrophy, ventricular enlargement, Braak neurofibrillary stage and CERAD score.<sup>57,58</sup> Despite these studies, further investigation is required to determine why different types of ARTAG and why the anatomical distribution of ARTAG varies between neurodegenerative diseases. This might be associated with the stage of sequential involvement of brain regions that reflect distinct pathogenic mechanisms, such as barrier dysfunction or mechanical impact.<sup>44</sup> The clinical relevance of ARTAG still requires further clarification.<sup>59</sup>

#### TDP-43

- Limbic-predominant age-related TDP-43 encephalopathy neuropathological change (LATE-NC): a recently described nomenclature and common TDP-43 proteinopathy typically associated with advanced age (>80 years) and is also found in individuals with cognitive impairment, in the absence of a motor neuron or FTD clinical phenotype.<sup>45</sup> Limbic TDP-43 pathology has been a recognised feature of aging and a range of neurodegenerative diseases in earlier studies.<sup>60</sup> It is characterised by a TDP-43-immunopositive neuronal cytoplasmic inclusions and/or dystrophic neurites in the medial temporal lobe. Additional hippocampal sclerosis may be observed in cases with LATE-NC. Although it is still debated whether LATE-NC represents an independent entity, recent studies support the notion that LATE-NC can be differentiated from FTLD-TDP<sup>61</sup> and may occur in isolation, but is commonly observed in AD.<sup>45</sup> Hippocampal sclerosis is reported to occur in up to 20% of individuals >85 years.<sup>62,63</sup> It is characterised by neuronal loss and gliosis in the hippocampal CA1 region and subiculum that is out of proportion to the extent of AD neuropathologic change<sup>64</sup> and is associated with the presence of TDP-43 pathology in almost all cases.<sup>65</sup> However, the definition of hippocampal sclerosis is often subjective, which has led to inconsistent interpretation and reporting of hippocampal sclerosis in the literature.

#### A $\beta$

- A $\beta$  plaques, most commonly observed in early phases, begin to develop in individuals in their 5<sup>th</sup>-6<sup>th</sup> decade of life and are observed in approximately 10% of individuals in this age group. The incidence and Thal A $\beta$  phase increase in prevalence with



**Table 2:** Nomenclature and definitions used in the literature to describe cases with multiple proteinopathies and/or vascular abnormalities

Nomenclature	Definition
Concomitant/co-existing pathology	Additional or combinations of pathological alterations are observed in addition to the hallmark lesions of a neurodegenerative disease. This can include more than one proteinopathy and/or vascular pathology.
Concomitant/co-existing proteinopathy	Additional or combinations of more than one proteinopathy.
Mixed pathology	Additional pathological alterations of any kind are observed in addition to the hallmark lesions of a neurodegenerative disease. This term was frequently used to describe additional vascular pathology.
Co-morbid proteinopathy	Combinations of neurodegenerative proteinopathies, usually with overlapping pathogenic aspects. <sup>78</sup>
Cerebral multimorbidity	Mixed pathology, which includes the presence of one or more proteinopathies and/or CVD. This can include concomitant, co-existing and mixed pathology, and co-morbid proteinopathy.
Mixed dementia	A clinical term used to describe a pathological entity. More than one disease or type of lesion is detected at postmortem, most frequently observed in the presence of both AD and CVD pathology. <sup>125</sup>

advancing age. Large autopsy studies have demonstrated that cases with A $\beta$  plaques also have NFT development.<sup>52</sup> A $\beta$  is also frequently observed in the walls of capillaries and arteries, referred to as CAA. CAA is a common age-related and incidental pathology found in asymptomatic individuals, but also occurs in a variety of hereditary forms of CAA.<sup>31,66</sup>

#### $\alpha$ -synuclein

- Lewy bodies confined to the brainstem (earliest Braak LB stages) and/or amygdala are commonly observed even without specific clinical symptoms.

In addition to these common ageing-related and incidental pathologies, unusual constellations of pathologies have been described in the elderly<sup>67</sup> that do not meet criteria for the above ageing-related and incidental pathologies. Rare cases of neuropathologically confirmed corticobasal degeneration (CBD),<sup>68,69</sup> PSP,<sup>70,71</sup> MSA<sup>72</sup> have also been reported in the absence of clinical symptoms. These cases are considered incidental and suggest a pathological burden needs to be reached before the development of a clinical phenotype.

CVD is another common incidental pathology that has been described in large autopsy series and increases in prevalence with advancing age. The incidence and contribution of CVD to clinical symptoms has proved to be difficult to reconcile largely due to inconsistent terminologies used. In 2016, the Vascular Cognitive Impairment Neuropathology Guidelines (VCING) were published in order to assess the contribution of CVD to cognitive impairment.<sup>73</sup> According to this, seven pathologies, including leptomenigeal CAA, large infarcts, lacunar infarcts, microinfarcts, arteriolosclerosis, dilation of the perivascular space and myelin loss predicted cognitive impairment.<sup>73</sup> The VCING model proposed to predict the likelihood that CVD contributed to cognitive impairment based on the combinations of three main determinants, including at least one large (>10 mm diameter) infarct, moderate/severe occipital leptomenigeal CAA, and moderate/severe arteriolosclerosis in the occipital white matter. These are used to assign a low, intermediate or high likelihood that CVD contributed to cognitive impairment in an individual.<sup>73</sup> Vascular lesions are interpreted as strategic for cognitive decline or not and have been designated as multi-infarct dementia, strategic infarct or subcortical vascular encephalopathy.<sup>74</sup> The frequency of vascular lesions in community-based neuropathology cohorts vary between 28 and 70% without clear differences between individuals with or

without cognitive decline.<sup>16</sup> The lack of consensus regarding assessment of vascular pathology has led to a wide range of reported prevalence rates of vascular dementia or vascular cognitive impairment. However, these discrepancies may reflect regional and ethnic differences or distinct management of cardiovascular risk factors.<sup>74</sup> Finally, there is a lack of systematic and comparative data on the prevalence of combined non-Alzheimer neurodegenerative proteinopathies and vascular lesions.

#### Nomenclature and Definitions Associated with Mixed Pathology

A combination of pathological alterations and the deposition of multiple protein deposits is commonly observed in the brains of elderly individuals and in neurodegenerative diseases. However, there are inconsistencies in the literature used to describe these cases (Table 2), and current nomenclature is often difficult to decipher, which has hindered a standardised classification for cases with mixed pathologies. In addition, the terms "proteinopathy" and "pathology" are frequently used interchangeably when describing cases with mixed pathology and it is important to distinguish the two entities. Here, the term "mixed pathology" is used to describe cases with a) mixed neurodegenerative pathologies or b) cases with mixed neurodegenerative pathologies and another type of pathology e.g., CVD, age-related pathology.

Based on the literature, mixed pathology usually refers to three underlying conditions:

1. Low-level concomitant pathologies: different proteinopathies and/or CVD with a restricted anatomical distribution and early pathological stage or phase. These pathologies are not typically associated with a specific clinical phenotype. For example, cortical ARTAG and brainstem-predominant Lewy bodies.
2. One severe pathology and further low-level concomitant pathologies: this includes one main proteinopathy, which is considered sufficient to cause the clinical phenotype alone, and at least one additional low-level concomitant proteinopathy and/or CVD, which in isolation is not typically associated with a clinical phenotype. For example, AD and low stage LATE-NC, AD and white matter ARTAG, FTLD-tau and ARTAG.
3. Two (or more) severe pathologies: each is anatomically widespread with a severe density of pathology. Either pathology in isolation would be considered sufficient to cause a clinical

phenotype. Additional low-level concomitant pathologies may be observed. For example, concurrent FTLT-tau and FTLT-TDP, or late stages of AD and DLB and severe forms of CVD.

### Prevalence of Mixed Pathologies with Ageing and in Neurodegenerative Diseases

Mixed pathologies are commonly reported in large autopsy studies and while the majority of studies have focused on individuals >65 years and the elderly >80 years with and without cognitive impairment, it is increasingly recognised that mixed pathologies are observed in younger individuals (<65 years). Despite the high number of reports describing mixed pathologies in ageing and neurodegenerative diseases, only recent studies use a combination of histological, immunohistochemical, biochemical and genetic methods to evaluate the spectrum of mixed pathologies. These studies have revealed a previously underappreciated and complex constellation of mixed pathologies. The prevalence of mixed pathologies in individuals with and without cognitive impairment indicates that deposition of these proteins inevitably occur with ageing, independent of neurodegenerative disease.<sup>75</sup> These age-related pathologies are likely to be present by the time late-onset neurodegenerative diseases develop and the number of mixed pathologies increasing with advanced age and longer survival.<sup>16,76</sup> However, it is recognised that some neurodegenerative diseases more commonly have mixed pathologies than others, and some neurodegenerative disorders are rarely mixed. Studies reporting the prevalence of mixed pathologies are summarised as follows:

#### 1. Mixed pathologies in community-based, longitudinal ageing studies

The prevalence of tau, A $\beta$ ,  $\alpha$ -synuclein and TDP-43 pathologies, hippocampal sclerosis and vascular pathology in unselected longitudinal ageing studies has highlighted the complexity, and diverse range and extent of proteinopathies and mixed pathologies in the ageing brain.<sup>15,16,75</sup> These studies report prevalence rates of up to 68% for AD-related pathology, 38% for ARTAG, 13% for AGD, 75% for TDP-43 pathology, 39% for LB pathology, 29% for hippocampal sclerosis and up to 70% for vascular pathology (Table 3).

A recent longitudinal community-based cohort of 375 individuals (mean = 87 years) reported that approximately 12% had four concomitant proteinopathies (tau, A $\beta$ ,  $\alpha$ -synuclein and TDP-43), and 38% had three concomitant proteinopathies.<sup>75</sup> Another recent study provides reference data on the frequency of distinct tau-immunopositive pathologies in the depths of cortical sulci.<sup>77</sup> Since TDP-43 was not discovered until 2006, the true prevalence of concomitant TDP-43 pathology is likely to be underestimated in cases collected before this time, which may not have been re-evaluated and screened for the presence of TDP-43. However, LATE-NC has been reported to occur in ~20% of individuals in a community-based cohort aged 75 years, and its prevalence increases with advancing age to ~75% in the >100-year age group.<sup>45</sup>

#### 2. Mixed pathologies in major proteinopathies

A range of mixed pathologies have been reported (for detailed review see: Kovacs<sup>78</sup>) for the major proteinopathies (Table 3), which further highlight the complexity of these disorders. For example, AD is frequently associated with ARTAG,

TDP-43/LATE-NC, LB pathology, hippocampal sclerosis and CVD in almost all cases. Depending on the FTLT-tau subtype, approximately 60% have A $\beta$  plaques, almost all have ARTAG or AGD and LB and TDP-43 pathology has been reported in up to 20% and 45% of all FTLT-tau cases, respectively. Interestingly, two recent studies report that early-onset FTLT and AD can also associate with mixed pathologies.<sup>76,79</sup> Approximately 40% of FTLT-TDP and motor neuron disease (MND) cases have A $\beta$  plaques, one-third have ARTAG or AGD and LB pathology is reported in up to 15% of all FTLT-TDP and MND cases. The Lewy body diseases (i.e., Parkinson's disease, Parkinson's disease dementia and Dementia with Lewy bodies) are frequently reported with A $\beta$  plaques (80%), ARTAG (37%) and TDP-43 pathology (33%). Approximately 40% of MSA cases have A $\beta$  plaques, 10% have LBs and a small proportion have TDP-43 pathology. Depending on the age and molecular subtypes examined, up to 23% of sporadic CJD cases have LB pathology, 69% have NFTs and less than 15% have ARTAG or AGD. TDP-43 pathology is rare in CJD.

#### 3. Mixed pathologies in genetic conditions

Emerging studies have highlighted the presence of mixed pathologies in a range of genetic neurodegenerative diseases, which are not associated with the protein encoded by the mutated gene. Historically, genetic neurodegenerative diseases were not previously considered to have mixed pathologies and in addition are likely to show the diverse range and complexity of age-related and incidental pathologies described above. As summarised in Yoshida et al.,<sup>71</sup> for example, 1) mutations in the *APP*, *PSEN-1* and *PSEN-2* genes causing AD have been reported with LB pathology, and TDP-43 pathology has been reported in cases with mutations in *PSEN-1* and *PSEN-2* genes; 2) *PRNP* mutations have been reported with a diverse range of mixed pathologies including AD-related pathology, FTLT-tau pathologies, ARTAG and LB pathology, however, TDP-43 pathology has not been observed; 3) genetic abnormalities in the *TARDBP*, *GRN* and *C9orf72* genes associated with TDP-43 pathology have been reported with AD pathology (NFTs and A $\beta$ ), LB pathology and ARTAG and 4) mutations in the *HTT* gene have been reported with AD and TDP-43 pathologies; AD and TDP-43 pathology, and  $\alpha$ -synuclein glial cytoplasmic inclusions have been reported in cases with mutations in *LRRK2* and *SNCA*.<sup>78</sup> Few mixed pathologies have been reported in cases with a mutation in *MAPT*, with TDP-43 pathology reported in a small number of cases.<sup>78,80</sup> The *APOE*  $\epsilon$ 4 allele is well established to be the greatest genetic risk factor for AD pathology<sup>81,82</sup> and is associated with the largest number of concomitant pathologies in both early- and late-onset AD.<sup>83</sup>

### Clinicopathological Correlations in Cases with Mixed Pathology

The regional distribution and severity of neurodegeneration underlie the diverse clinical phenotypes associated with neurodegenerative diseases. In many of these disorders, neurodegenerative changes and different proteinopathies converge on the same anatomical regions as the disease progresses to produce similar and overlapping cognitive, behavioural, linguistic and motor deficits, rather than the type of protein abnormality present. Throughout

**Table 3:** Prevalence (%) of mixed pathologies in community-based, longitudinal ageing studies and major neurodegenerative diseases

Cohort	Type of pathology	AD-related	Aβ	NFT only/PART	Tau		TDP-43	α-synuclein			Ref	
					ARTAG	AGD	LATE-NC/other	LB pathology	HS	CVD		
Community-based, longitudinal	± cognitive impairment	19–68	≤100	≤100	38	13	13–75	6–39	5–29	31–70	<a href="#">16,52,62,75</a>	
Major proteinopathies reported in various studies	AD	100	100	–	63	23–58	8–74	42–55	3–15	86	<a href="#">42,76,104,126</a>	
	FTLD-tau											
	PiD	15	20	–	77	n/d	0	7–13	n/d	n/d	<a href="#">42,96</a>	
	CBD	11	41	–	100	100	15–45	10–13	n/d	n/d	<a href="#">42,93,96,127,128</a>	
	PSP	26	57	–	99	18–80	6–16	6–22	n/d	n/d	<a href="#">42,96,129–131</a>	
	GGT	2	n/d	–	n/d	n/d	7	5	1	n/d	<a href="#">132</a>	
	FTLD-TDP	5	42	50	n/d	7	n/d	6–15	n/d	n/d	<a href="#">42,96,133</a>	
	MND	5	36	45	41	37	n/d	6–11	n/d	n/d	<a href="#">42,57,106,134</a>	
	LBD <sup>1</sup>	10–100 <sup>2</sup>	50–100 <sup>3</sup>	16–63	56 <sup>4</sup>	10–25	2–52	n/d	n/d	38	<a href="#">42,57,126,135</a>	
	MSA	8	38	40	43	n/d	4–7	10	n/d	n/d	<a href="#">42,136,137</a>	
	CJD	38–50	n/d	69	15	6–8	rare	9–23	n/d	n/d	<a href="#">138–141</a>	

AD = Alzheimer’s disease; AGD = argyrophilic grain disease; ARTAG = ageing-related tau astroglial pathology; CBD = corticobasal degeneration; CJD = Creutzfeldt-Jakob disease; CVD = cerebrovascular disease; FTLD = frontotemporal lobar degeneration with tau or TDP-43 inclusions; GGT = globular glial tauopathy; HS = hippocampal sclerosis; LATE-NC = limbic-predominant age-related TDP-43 encephalopathy neuropathological change; LB = Lewy body; MND = motor neuron disease; MSA = multiple system atrophy; n/d: not determined; PART = primary age-related tauopathy; PD = Parkinson’s disease; PiD = Pick’s disease; PSP = progressive supranuclear palsy.

<sup>1</sup>Lewy body disorders (LBD) here include Parkinson’s disease (PD), Parkinson’s disease with dementia (PDD), and dementia with Lewy bodies (DLB)

<sup>2</sup>Depending on the definitions used (AD with DLB or DLB)

<sup>3</sup>Depending on the stage of Lewy body pathology.

<sup>4</sup>Determined for Lewy body disorders and not stratified for PD/DLB.

the disease course, additional anatomical regions become involved, with the development of subsequent diverse and complex clinical symptoms.

These concepts need to be carefully considered in cases with the presence of mixed pathology to determine whether concomitant pathology contributes to the clinical phenotype observed. Similar to the neurodegenerative proteinopathies, this will be influenced by the anatomical distribution, severity and nature of the concomitant pathology. While severe concomitant pathologies are considered sufficient to cause a clinical phenotype, e.g., one severe proteinopathy with clear links to the clinical phenotype, the extent to which low-level concomitant pathologies are likely to contribute to the patient's cognitive and/or motor impairment is difficult to determine. Low-level concomitant pathologies are not typically associated with a clinical phenotype and are considered insufficient to cause clinical symptoms in isolation. However, while there is a paucity of data on the impact of ageing-related and mixed pathologies, and the number of mixed pathologies present, on clinical phenotype/s, it is generally assumed that they lower an individual's threshold for developing neurodegenerative proteinopathies and/or cognitive decline.<sup>84</sup> In addition, the severity of mixed pathologies increase with advancing age and correlate with the severity of clinical symptoms.<sup>42</sup> Large autopsy studies in individuals >80 years of age have shown that concomitant pathologies increase the risk of cognitive impairment<sup>85,86</sup> and dementia, and are associated with a more rapid disease course.<sup>75</sup> Importantly, a recent study has found that the presence of a single concomitant pathology increases the odds of transitioning from mild cognitive impairment to dementia by 20-fold.<sup>87</sup> Other studies have reported that each concomitant pathology contributes differently to specific cognitive domains and cognitive decline, and cognitive trajectories over time<sup>42,63,84,86,88-91</sup> and the number of mixed non-AD pathologies present have a cumulative effect on clinical progression rate of early- and late-onset AD.<sup>76</sup>

In addition to prognostic relevance, there are also examples that additional pathologies modify the clinical phenotype. The presence of AD-neuropathologic change and LATE-NC continue to rise with advancing age, and recent studies have reported that the presence of both LATE-NC and AD-neuropathologic change is associated with a clinical phenotype that is more severe than observed when either pathology is observed in isolation.<sup>75</sup> Moreover, individuals with LATE-NC are more likely to have AD neuropathology, and are clinically distinct from FTLT-D with the presence of visuospatial impairments, delusions, and/or visual hallucinations.<sup>92</sup> Additional TDP-43 pathology can alter the clinicopathological phenotype as exemplified by CBD with TDP-43 pathology presenting with PSP syndrome as a distinct clinicopathological subtype.<sup>93</sup> A few studies have reported that some ARTAG types correlate with clinical symptoms, but further studies are required to clarify the clinical relevance of ARTAG. For example, while white matter ARTAG is associated with AD, the presence of any type of ARTAG is equally prevalent in typical and atypical presentations of AD.<sup>58</sup> However, a negative impact of white matter ARTAG to language and possibly visuospatial networks has been discussed,<sup>94</sup> expanding observations on widespread grey matter ARTAG associated with dementia of the elderly.<sup>15,67</sup> Indeed, cortical grey matter ARTAG has been associated with dementia in individuals aged over 90 years, although ARTAG in other regions (limbic and brainstem) were not.<sup>95</sup> Concomitant CVD and/or other vascular pathology is challenging to measure and standardize neuropathologically, and how this correlates to the clinical phenotype and disease course is debated. The presence of LBD as an

additional pathology can lead to complex clinical phenotypes, including sleep disorder and parkinsonism in otherwise dementing illnesses. Indeed, a recent study showed that association of Lewy body pathology in FTLT leads to clinical parkinsonism, therefore impacting the clinical course and therapy strategies.<sup>96</sup> Co-existing Lewy body pathology can cause Creutzfeldt-Jakob disease-like rapidly progressive neurological symptoms in sporadic and *APP* mutation-related AD.<sup>97</sup> Further interesting aspects to mention is when a genetic prion disease begins with long-standing parkinsonism due to LBD but associates with rapidly progressive dementia in the terminal phase due to additional idiopathic or genetic prion disease.<sup>98</sup> On the other hand, additional pathologies are not thought to have a significant effect on the clinical course in larger cohorts of PSP cases,<sup>99,100</sup> although on an individual level subtle differences might be noted.<sup>101</sup> Since protein biomarkers are already available ( $A\beta$ , tau,  $\alpha$ -synuclein, prion protein), together with their biochemical modifications, markers of neuronal degeneration (neurofilament light chain, tau, MRI atrophy), neuroinflammation and genetic mutations or polymorphisms, *in vivo* follow-up studies will translate current molecular pathology observations into the clinical practice and will allow better understanding of the effect of mixed pathologies during the course of disease and not in the terminal phase as in postmortem studies.<sup>102</sup>

### Molecular Pathogenic Mechanisms in Cases with Mixed Pathologies

As recently reviewed, four main pathogenic mechanisms have been proposed to explain why mixed pathologies occur in the ageing human brain,<sup>78</sup> which might be capable of lowering the threshold for cognitive decline and/or accelerate the disease course in neurodegenerative diseases.

Age is considered to be the most important risk factor for developing sporadic neurodegenerative diseases and mixed pathologies, but the reason for this has not been fully elucidated and is an area of great research interest. In addition, there is a correlation with the number and extent of mixed pathologies with advancing age. Large longitudinal community ageing studies have demonstrated that the prevalence of NFT,  $A\beta$  plaques and Lewy bodies increase in prevalence with advancing age, as well as the number of brain regions affected and the density of pathological inclusions.<sup>45,52,103</sup> For example, almost all individuals by their third decade of life will have some degree of NFT development, and the severity and regional involvement increases with advancing age. Similarly,  $A\beta$  plaques are observed in a small proportion of individuals in their third decade of life, which increases to approximately 60 and 80% of individuals in their 9<sup>th</sup> and 10<sup>th</sup> decade of life, respectively.<sup>52</sup> More recently, this has been demonstrated with the increased frequency of LATE-NC and AGD as mixed pathologies in aged individuals.<sup>45,104</sup> The prevalence of these pathologies suggests that they inevitably occur with aging, and by the time an individual reaches advanced age, it is likely that multiple mixed pathologies will have developed in the brain, whereas younger individuals might show less mixed pathologies. However, fewer studies have investigated the range and extent of mixed pathologies in younger cohorts. Recent studies highlight that some young-onset neurodegenerative diseases<sup>76,79</sup> show mixed pathologies, which suggests additional pathogenic mechanisms are likely to be involved including disturbances in protein processing systems, cell clearance etc.

A complex synergistic interaction of proteins has also been discussed,<sup>83,103,105</sup> which is intriguing when the same cell type/s and

brain region/s are affected. In the human brain, fibrillar structures of different proteins have been reported to occur in the same cell and show partial co-localisation.<sup>78</sup> These studies suggest interactions of tau, A $\beta$ ,  $\alpha$ -synuclein and TDP-43, and indicate the deposition of one protein can lead to fibrillization of other proteins. For example,  $\alpha$ -synuclein can induce tau fibrillization<sup>105</sup> and A $\beta$  may aggravate the spread of TDP-43 pathology.<sup>103</sup> However, many mixed pathologies do not occur in the same cell type/s and/or anatomical brain regions, for example FTLN with Lewy bodies, suggesting that an interaction of proteins is less unlikely.<sup>96,106</sup> These pathologies are likely to develop independently in vulnerable brain regions and cell types, in anatomically distinct regions.

A single pathogenic event in a vulnerable brain region and cellular system has also been suggested to induce aggregation of multiple proteins, indicating common pathways are involved in disease pathogenesis. This includes insufficient clearance by the autophagic-lysosomal network and other clearance systems such as the ubiquitin-proteasome system, or clearance through the blood-brain barrier and glymphatic system.<sup>78,107</sup> Building on this concept, combined proteinopathies might represent distinct “strain-like” properties from those associated with conditions that deposit only one abnormal protein, or the “behaviour” of protein strains is different when multiple proteins are deposited.<sup>42</sup>

Finally, a common gene variation might contribute to the development of additional proteinopathies. A recent review has outlined the role of APOE4 in modulating the clearance and aggregation of A $\beta$  and exacerbate neurodegeneration, tau pathology and inflammation.<sup>108</sup> In addition, the APOE4 allele has been reported to increase the burden of TDP-43 pathology<sup>109</sup> and severity of Lewy body pathology.<sup>110</sup>

## Conclusions and Future Considerations

Mixed pathologies in the ageing brain and neurodegenerative disease are more common than previously assumed, and combinations of mixed pathologies are now also recognised in hereditary neurodegenerative diseases. The most frequent concomitant neurodegenerative pathologies observed are AD, Lewy body pathology and ageing-related pathologies including ARTAG, AGD and LATE-NC. Recent studies suggest that age is not a major risk factor for mixed pathologies in early- and late-onset FTLN and AD,<sup>76,79</sup> although mixed pathologies are likely to be already present with late-onset neurodegenerative diseases.

Mixed and age-related pathologies reported in large community-based, longitudinal ageing studies and various studies in neurodegenerative cohorts are associated with lowering the threshold for developing cognitive decline and cognitive impairment. Patients with mixed pathologies are likely to show a different clinical course, compared to those with pure proteinopathies. This has implications to develop panels of biomarkers that are able to screen various neurodegeneration proteins and markers of disease progression, which, together with genetic markers, will facilitate better stratification of patients according to their underlying pure or combined proteinopathy.<sup>102</sup> Analogously, therapeutic development might need to consider combined strategies, eventually based on the atomic level on structures of disease-associated protein filaments.

Regarding neuropathology, standardisation in the nomenclature used to describe multiple proteinopathies is needed. Careful discrimination is required to distinguish neurodegenerative proteinopathies versus ageing-related pathologies, and in particular what pathological burden is considered sufficient to cause clinical

symptoms. With multiple proteinopathies, discriminating age-related and co-pathologies from the main proteinopathy causing disease might be more challenging and may require a more personalised approach to therapeutic strategies. Finally, defining cell-specific stages of pathological staging/disease progression will have important implications for understanding the earliest stages of disease.

A number of studies have suggested common pathologic mechanisms and/or interaction of pathological proteins in neurodegenerative diseases.<sup>103</sup> Currently, preclinical models have proved informative for understanding many molecular mechanisms underlying various neurodegenerative diseases, but these have largely focused on modelling one type of protein abnormality with limited consideration of mixed pathologies in the ageing human brain. More focused preclinical models will be critical to better capture the spectrum of mixed pathologies observed in ageing and in neurodegenerative diseases and further explore disease mechanisms.

**Acknowledgements.** The authors wish to thank staff at the Sydney Brain Bank (supported by the University of New South Wales and Neuroscience Research Australia) and the Institute of Neurology, Medical university of Vienna for the initial characterisation of the cases used to prepare the sections for figurework. GJK is supported by the Edmond J. Safra and Rossy philanthropic funds.

**Disclosures.** SF declares no conflicts of interest. GK receives funding from the Rossy Foundation and Edmond Safra Philanthropic fund; receives royalties from Cambridge University Press, Elsevier and Wiley, and previously received consulting fees from Biogen; and declares a shared patent for a 5G4 antibody with Roboscreen GmbH.

**Statement of Authorship.** SLF and GJK drafted and edited the manuscript.

## References

- Teunissen CE, Verberk IMW, Thijssen EH, et al. Blood-based biomarkers for Alzheimer's disease: towards clinical implementation. *Lancet Neurol.* 2022;21:66–77. DOI [10.1016/s1474-4422\(21\)00361-6](https://doi.org/10.1016/s1474-4422(21)00361-6).
- Hansson O. Biomarkers for neurodegenerative diseases. *Nat Med.* 2021;27:954–63. DOI [10.1038/s41591-021-01382-x](https://doi.org/10.1038/s41591-021-01382-x).
- Prusiner SB. Novel proteinaceous infectious particles cause scrapie. *Science.* 1982;216:136–44. DOI [10.1126/science.6801762](https://doi.org/10.1126/science.6801762).
- Atarashi R, Moore RA, Sim VL, et al. Ultrasensitive detection of scrapie prion protein using seeded conversion of recombinant prion protein. *Nat Methods.* 2007;4:645–50. DOI [10.1038/nmeth1066](https://doi.org/10.1038/nmeth1066).
- Atarashi R, Satoh K, Sano K, et al. Ultrasensitive human prion detection in cerebrospinal fluid by real-time quaking-induced conversion. *Nat Med.* 2011;17:175–8. DOI [10.1038/nm.2294](https://doi.org/10.1038/nm.2294).
- Castilla J, Saa P, Morales R, Abid K, Maundrell K, Soto C. Protein misfolding cyclic amplification for diagnosis and prion propagation studies. *Methods Enzymol.* 2006;412:3–21. DOI [10.1016/S0076-6879\(06\)12001-7](https://doi.org/10.1016/S0076-6879(06)12001-7).
- Saborio GP, Permanne B, Soto C. Sensitive detection of pathological prion protein by cyclic amplification of protein misfolding. *Nature.* 2001;411:810–3. DOI [10.1038/35081095](https://doi.org/10.1038/35081095).
- Guo JL, Lee VM. Cell-to-cell transmission of pathogenic proteins in neurodegenerative diseases. *Nat Med.* 2014;20:130–8. DOI [10.1038/nm.3457](https://doi.org/10.1038/nm.3457).
- Brettschneider J, Del Tredici K, Lee VM, Trojanowski JQ. Spreading of pathology in neurodegenerative diseases: a focus on human studies. *Nat Rev Neurosci.* 2015;16:109–20. DOI [10.1038/nrn3887](https://doi.org/10.1038/nrn3887).
- Dubois B, Hampel H, Feldman HH, et al. Preclinical Alzheimer's disease: definition, natural history, and diagnostic criteria. *Alzheimers Dement.* 2016;12:292–323. DOI [10.1016/j.jalz.2016.02.002](https://doi.org/10.1016/j.jalz.2016.02.002).
- Michell AW, Lewis SJ, Foltynie T, Barker RA. Biomarkers and Parkinson's disease. *Brain.* 2004;127:1693–705. DOI [10.1093/brain/awh198](https://doi.org/10.1093/brain/awh198).
- Orimo S, Ghebremedhin E, Gelpi E. Peripheral and central autonomic nervous system: does the sympathetic or parasympathetic nervous system

- bear the brunt of the pathology during the course of sporadic PD? *Cell Tissue Res.* 2018;373:267–86. DOI [10.1007/s00441-018-2851-9](https://doi.org/10.1007/s00441-018-2851-9).
13. Woerman AL. Strain diversity in neurodegenerative disease: an argument for a personalized medicine approach to diagnosis and treatment. *Acta Neuropathol.* 2021;142:1–3. DOI [10.1007/s00401-021-02311-5](https://doi.org/10.1007/s00401-021-02311-5).
  14. Kovacs GG. Molecular pathological classification of neurodegenerative diseases: turning towards precision medicine. *Int J Mol Sci.* 2016;17:189. DOI [10.3390/ijms17020189](https://doi.org/10.3390/ijms17020189).
  15. Kovacs GG, Milenkovic I, Wöhrer A, et al. Non-Alzheimer neurodegenerative pathologies and their combinations are more frequent than commonly believed in the elderly brain: a community-based autopsy series. *Acta Neuropathol.* 2013;126:365–84. DOI [10.1007/s00401-013-1157-y](https://doi.org/10.1007/s00401-013-1157-y).
  16. Rahimi J, Kovacs GG. Prevalence of mixed pathologies in the aging brain. *Alzheimers Res Ther.* 2014;6:82. DOI [10.1186/s13195-014-0082-1](https://doi.org/10.1186/s13195-014-0082-1).
  17. Terry RD. Cell death or synaptic loss in Alzheimer disease. *J Neuropathol Exp Neurol.* 2000;59:1118–9. DOI [10.1093/jnen/59.12.1118](https://doi.org/10.1093/jnen/59.12.1118).
  18. Bright F, Werry EL, Dobson-Stone C, et al. Neuroinflammation in frontotemporal dementia. *Nat Rev Neurol.* 2019;15:540–55. DOI [10.1038/s41582-019-0231-z](https://doi.org/10.1038/s41582-019-0231-z).
  19. Mackenzie IR, Neumann M, Bigio EH, et al. Nomenclature for neuropathologic subtypes of frontotemporal lobar degeneration: consensus recommendations. *Acta Neuropathol.* 2009;117:15–8. DOI [10.1007/s00401-008-0460-5](https://doi.org/10.1007/s00401-008-0460-5).
  20. Neumann M, Mackenzie IRA. Review: neuropathology of non-tau frontotemporal lobar degeneration. *Neuropathol Appl Neurobiol.* 2019;45:19–40. DOI [10.1111/nan.12526](https://doi.org/10.1111/nan.12526).
  21. Buée L, Bussi ere T, Bu e-Scherrer V, Delacourte A, Hof PR. Tau protein isoforms, phosphorylation and role in neurodegenerative disorders. *Brain Res Rev.* 2000;33:95–130. DOI [10.1016/s0165-0173\(00\)00019-9](https://doi.org/10.1016/s0165-0173(00)00019-9).
  22. Ittner A, Ittner LM. Dendritic tau in Alzheimer’s disease. *Neuron.* 2018;99:13–27. DOI [10.1016/j.neuron.2018.06.003](https://doi.org/10.1016/j.neuron.2018.06.003).
  23. Arendt T, Stieler JT, Holzer M. Tau and tauopathies. *Brain Res Bull.* 2016;126:238–92. DOI [10.1016/j.brainresbull.2016.08.018](https://doi.org/10.1016/j.brainresbull.2016.08.018).
  24. Kovacs GG. Invited review: neuropathology of tauopathies: principles and practice. *Neuropathol Appl Neurobiol.* 2015;41:3–23. DOI [10.1111/nan.12208](https://doi.org/10.1111/nan.12208).
  25. Spillantini MG, Crowther RA, Jakes R, Cairns NJ, Lantos PL, Goedert M. Filamentous alpha-synuclein inclusions link multiple system atrophy with Parkinson’s disease and dementia with Lewy bodies. *Neurosci Lett.* 1998;251:205–8. DOI [10.1016/s0304-3940\(98\)00504-7](https://doi.org/10.1016/s0304-3940(98)00504-7).
  26. Spillantini MG, Schmidt ML, Lee VM, Trojanowski JQ, Jakes R, Goedert M. Alpha-synuclein in Lewy bodies. *Nature.* 1997;388:839–40. DOI [10.1038/42166](https://doi.org/10.1038/42166).
  27. Buratti E, Baralle FE. Multiple roles of TDP-43 in gene expression, splicing regulation, and human disease. *Front Biosci.* 2008;13:867–78. DOI [10.2741/2727](https://doi.org/10.2741/2727).
  28. Mackenzie IR, Munoz DG, Kusaka H, et al. Distinct pathological subtypes of FTL-D-FUS. *Acta Neuropathol.* 2011;121:207–18. DOI [10.1007/s00401-010-0764-0](https://doi.org/10.1007/s00401-010-0764-0).
  29. Vance C, Rogelj B, Hortobagyi T, et al. Mutations in FUS, an RNA processing protein, cause familial amyotrophic lateral sclerosis type 6. *Science.* 2009;323:1208–11. DOI [10.1126/science.1165942](https://doi.org/10.1126/science.1165942).
  30. Cacace R, Sleegers K, Van Broeckhoven C. Molecular genetics of early-onset Alzheimer’s disease revisited. *Alzheimers Dement.* 2016;12:733–48. DOI [10.1016/j.jalz.2016.01.012](https://doi.org/10.1016/j.jalz.2016.01.012).
  31. Attems J, Jellinger KA, Thal DR, Van Nostrand W. Review: sporadic cerebral amyloid angiopathy. *Neuropathol Appl Neurobiol.* 2011;37:75–93. DOI [10.1111/j.1365-2990.2010.01137.x](https://doi.org/10.1111/j.1365-2990.2010.01137.x).
  32. Quadrio I, Perret-Liaudet A, Kovacs GG. Molecular diagnosis of human prion disease. *Expert Opin Med Diagn.* 2011;5:291–306. DOI [10.1517/17530059.2011.576664](https://doi.org/10.1517/17530059.2011.576664).
  33. Kovacs GG. Current concepts of neurodegenerative diseases. *EMJ Neurol.* 2014;1:1–9.
  34. Creekmore BC, Chang YW, Lee EB. The Cryo-EM effect: structural biology of neurodegenerative disease aggregates. *J Neuropathol Exp Neurol.* 2021;80:514–29. DOI [10.1093/jnen/nlab039](https://doi.org/10.1093/jnen/nlab039).
  35. Kollmer M, Close W, Funk L, et al. Cryo-EM structure and polymorphism of Abeta amyloid fibrils purified from Alzheimer’s brain tissue. *Nat Commun.* 2019;10:4760. DOI [10.1038/s41467-019-12683-8](https://doi.org/10.1038/s41467-019-12683-8).
  36. Yang Y, Arseni D, Zhang W, et al. Cryo-EM structures of amyloid-beta 42 filaments from human brains. *Science.* 2022;375:167–72. DOI [10.1126/science.abm7285](https://doi.org/10.1126/science.abm7285).
  37. Shi Y, Zhang W, Yang Y, et al. Structure-based classification of tauopathies. *Nature.* 2021;598:359–63. DOI [10.1038/s41586-021-03911-7](https://doi.org/10.1038/s41586-021-03911-7).
  38. Schweighauser M, Shi Y, Tarutani A, et al. Structures of alpha-synuclein filaments from multiple system atrophy. *Nature.* 2020;585:464–9. DOI [10.1038/s41586-020-2317-6](https://doi.org/10.1038/s41586-020-2317-6).
  39. Arseni D, Hasegawa M, Murzin AG, et al. Structure of pathological TDP-43 filaments from ALS with FTL-D. *Nature.* 2022;601:139–43. DOI [10.1038/s41586-021-04199-3](https://doi.org/10.1038/s41586-021-04199-3).
  40. Vaquer-Alicea J, Diamond MI, Joachimiak LA. Tau strains shape disease. *Acta Neuropathol.* 2021;142:57–71. DOI [10.1007/s00401-021-02301-7](https://doi.org/10.1007/s00401-021-02301-7).
  41. Holec SAM, Woerman AL. Evidence of distinct alpha-synuclein strains underlying disease heterogeneity. *Acta Neuropathol.* 2021;142:73–86. DOI [10.1007/s00401-020-02163-5](https://doi.org/10.1007/s00401-020-02163-5).
  42. Robinson JL, Lee EB, Xie SX, et al. Neurodegenerative disease concomitant proteinopathies are prevalent, age-related and APOE4-associated. *Brain.* 2018;141:2181–93. DOI [10.1093/brain/awyl46](https://doi.org/10.1093/brain/awyl46).
  43. Kovacs GG, Lukic MJ, Irwin DJ, et al. Distribution patterns of tau pathology in progressive supranuclear palsy. *Acta Neuropathol.* 2020;140:99–119. DOI [10.1007/s00401-020-02158-2](https://doi.org/10.1007/s00401-020-02158-2).
  44. Kovacs GG, Xie SX, Robinson JL, et al. Sequential stages and distribution patterns of aging-related tau astrogliopathy (ARTAG) in the human brain. *Acta Neuropathol Commun.* 2018;6:50. DOI [10.1186/s40478-018-0552-y](https://doi.org/10.1186/s40478-018-0552-y).
  45. Nelson PT, Dickson DW, Trojanowski JQ, et al. Limbic-predominant age-related TDP-43 encephalopathy (LATE): consensus working group report. *Brain.* 2019;142:1503–27. DOI [10.1093/brain/awz099](https://doi.org/10.1093/brain/awz099).
  46. Ahmed Z, Cooper J, Murray TK, et al. A novel in vivo model of tau propagation with rapid and progressive neurofibrillary tangle pathology: the pattern of spread is determined by connectivity, not proximity. *Acta Neuropathol.* 2014;127:667–83. DOI [10.1007/s00401-014-1254-6](https://doi.org/10.1007/s00401-014-1254-6).
  47. Asher DM, Belay E, Bigio E, et al. Risk of transmissibility from neurodegenerative disease-associated proteins: experimental knowns and unknowns. *J Neuropathol Exp Neurol.* 2020;79:1141–6. DOI [10.1093/jnen/nlaa109](https://doi.org/10.1093/jnen/nlaa109).
  48. Crary JF, Trojanowski JQ, Schneider JA, et al. Primary age-related tauopathy (PART): a common pathology associated with human aging. *Acta Neuropathol.* 2014;128:755–66. DOI [10.1007/s00401-014-1349-0](https://doi.org/10.1007/s00401-014-1349-0).
  49. Jellinger KA. Different patterns of hippocampal tau pathology in Alzheimer’s disease and PART. *Acta Neuropathol.* 2018;136:811–3. DOI [10.1007/s00401-018-1894-z](https://doi.org/10.1007/s00401-018-1894-z).
  50. Duyckaerts C, Braak H, Brion JP, et al. PART is part of Alzheimer disease. *Acta Neuropathol.* 2015;129:749–56. DOI [10.1007/s00401-015-1390-7](https://doi.org/10.1007/s00401-015-1390-7).
  51. Jellinger KA, Alafuzoff I, Attems J, et al. PART, a distinct tauopathy, different from classical sporadic Alzheimer disease. *Acta Neuropathol.* 2015;129:757–62. DOI [10.1007/s00401-015-1407-2](https://doi.org/10.1007/s00401-015-1407-2).
  52. Braak H, Thal DR, Ghebremedhin E, Del Tredici K. Stages of the pathologic process in Alzheimer disease: age categories from 1 to 100 years. *J Neuropathol Exp Neurol.* 2011;70:960–9. DOI [10.1097/NEN.0b013e318232a379](https://doi.org/10.1097/NEN.0b013e318232a379).
  53. Braak H, Braak E. Argyrophilic grain disease: frequency of occurrence in different age categories and neuropathological diagnostic criteria. *J Neural Transm.* 1998;105:801–19. DOI [10.1007/s007020050096](https://doi.org/10.1007/s007020050096).
  54. Togo T, Sahara N, Yen SH, et al. Argyrophilic grain disease is a sporadic 4-repeat tauopathy. *J Neuropathol Exp Neurol.* 2002;61:547–56. DOI [10.1093/jnen/61.6.547](https://doi.org/10.1093/jnen/61.6.547).
  55. Cairns NJ, Bigio EH, Mackenzie IR, et al. Neuropathologic diagnostic and nosologic criteria for frontotemporal lobar degeneration: consensus of the Consortium for Frontotemporal Lobar Degeneration. *Acta Neuropathol.* 2007;114:5–22. DOI [10.1007/s00401-007-0237-2](https://doi.org/10.1007/s00401-007-0237-2).
  56. Kovacs GG, Ferrer I, Grinberg LT, et al. Aging-related tau astrogliopathy (ARTAG): harmonized evaluation strategy. *Acta Neuropathol.* 2016;131:87–102. DOI [10.1007/s00401-015-1509-x](https://doi.org/10.1007/s00401-015-1509-x).

57. Kovacs GG, Robinson JL, Xie SX, et al. Evaluating the patterns of aging-related tau astroglialopathy unravels novel insights into brain aging and neurodegenerative diseases. *J Neuropathol Exp Neurol.* 2017;76:270–88. DOI [10.1093/jnen/nlx007](https://doi.org/10.1093/jnen/nlx007).
58. Nolan A, De Paula Franca Resende E, Petersen C, et al. Astrocytic tau deposition is frequent in typical and atypical Alzheimer disease presentations. *J Neuropathol Exp Neurol.* 2019;78:1112–23. DOI [10.1093/jnen/nlz094](https://doi.org/10.1093/jnen/nlz094).
59. Kovacs GG. Astroglia and tau: new perspectives. *Front Aging Neurosci.* 2020;12:96. DOI [10.3389/fnagi.2020.00096](https://doi.org/10.3389/fnagi.2020.00096).
60. Amador-Ortiz C, Lin WL, Ahmed Z. TDP-43 immunoreactivity in hippocampal sclerosis and Alzheimer's disease. *Ann Neurol.* 2007;61:435–45. DOI [10.1002/ana.21154](https://doi.org/10.1002/ana.21154).
61. Robinson JL, Porta S, Garrett FG, et al. Limbic-predominant age-related TDP-43 encephalopathy differs from frontotemporal lobar degeneration. *Brain.* 2020;143:2844–57. DOI [10.1093/brain/awaa219](https://doi.org/10.1093/brain/awaa219).
62. Leverenz JB, Agustin CM, Tsuang D, et al. Clinical and neuropathological characteristics of hippocampal sclerosis: a community-based study. *Arch Neurol.* 2002;59:1099–106. DOI [10.1001/archneur.59.7.1099](https://doi.org/10.1001/archneur.59.7.1099).
63. Nag S, Yu L, Capuano AW, et al. Hippocampal sclerosis and TDP-43 pathology in aging and Alzheimer disease. *Ann Neurol.* 2015;77:942–52. DOI [10.1002/ana.24388](https://doi.org/10.1002/ana.24388).
64. Montine TJ, Phelps CH, Beach TG, et al. National Institute on Aging-Alzheimer's Association guidelines for the neuropathologic assessment of Alzheimer's disease: a practical approach. *Acta Neuropathol.* 2012;123:1–11. DOI [10.1007/s00401-011-0910-3](https://doi.org/10.1007/s00401-011-0910-3).
65. Nelson PT, Schmitt FA, Lin Y, et al. Hippocampal sclerosis in advanced age: clinical and pathological features. *Brain.* 2011;134:1506–18. DOI [10.1093/brain/awr053](https://doi.org/10.1093/brain/awr053).
66. Revesz T, Holton JL, Lashley T, et al. Genetics and molecular pathogenesis of sporadic and hereditary cerebral amyloid angiopathies. *Acta Neuropathol.* 2009;118:115–30. DOI [10.1007/s00401-009-0501-8](https://doi.org/10.1007/s00401-009-0501-8).
67. Kovacs GG, Molnár K, László L, et al. A peculiar constellation of tau pathology defines a subset of dementia in the elderly. *Acta Neuropathol.* 2011;122:205–22. DOI [10.1007/s00401-011-0819-x](https://doi.org/10.1007/s00401-011-0819-x).
68. Martínez-Maldonado A, Luna-Muñoz J, Ferrer I. Incidental corticobasal degeneration. *Neuropathol Appl Neurobiol.* 2016;42:659–63. DOI [10.1111/nan.12339](https://doi.org/10.1111/nan.12339).
69. Milenkovic I, Kovacs GG. Incidental corticobasal degeneration in a 76-year-old woman. *Clin Neuropathol.* 2013;32:69–72. DOI [10.5414/np300515](https://doi.org/10.5414/np300515).
70. Evidente VG, Adler CH, Sabbagh MN, et al. Neuropathological findings of PSP in the elderly without clinical PSP: possible incidental PSP? *Parkinsonism Relat Disord.* 2011;17:365–71. DOI [10.1016/j.parkreidis.2011.02.017](https://doi.org/10.1016/j.parkreidis.2011.02.017).
71. Yoshida K, Hata Y, Kinoshita K, Takashima S, Tanaka K, Nishida N. Incipient progressive supranuclear palsy is more common than expected and may comprise clinicopathological subtypes: a forensic autopsy series. *Acta Neuropathol.* 2017;133:809–23. DOI [10.1007/s00401-016-1665-7](https://doi.org/10.1007/s00401-016-1665-7).
72. Fujishiro H, Ahn TB, Frigerio R, et al. Glial cytoplasmic inclusions in neurologically normal elderly: prodromal multiple system atrophy? *Acta Neuropathol.* 2008;116:269–75. DOI [10.1007/s00401-008-0398-7](https://doi.org/10.1007/s00401-008-0398-7).
73. Skrobot OA, Attems J, Esiri M, et al. Vascular cognitive impairment neuropathology guidelines (VCING): the contribution of cerebrovascular pathology to cognitive impairment. *Brain.* 2016;139:2957–69. DOI [10.1093/brain/aww214](https://doi.org/10.1093/brain/aww214).
74. McAleese KE, Alafuzoff I, Charidimou A, et al. Post-mortem assessment in vascular dementia: advances and aspirations. *BMC Med.* 2016;14:129. DOI [10.1186/s12916-016-0676-5](https://doi.org/10.1186/s12916-016-0676-5).
75. Karanth S, Nelson PT, Katsumata Y, et al. Prevalence and clinical phenotype of quadruple misfolded proteins in older adults. *JAMA Neurol.* 2020;77:1299–307. DOI [10.1001/jamaneurol.2020.1741](https://doi.org/10.1001/jamaneurol.2020.1741).
76. Spina S, La Joie R, Petersen C, et al. Comorbid neuropathological diagnoses in early versus late-onset Alzheimer's disease. *Brain.* 2021;144:2186–98. DOI [10.1093/brain/awab099](https://doi.org/10.1093/brain/awab099).
77. Forrest SL, Kril JJ, Wagner S, et al. Chronic traumatic encephalopathy (CTE) is absent from a European community-based aging cohort while cortical aging-related tau astroglialopathy (ARTAG) is highly prevalent. *J Neuropathol Exp Neurol.* 2019;78:398–405. DOI [10.1093/jnen/nlz017](https://doi.org/10.1093/jnen/nlz017).
78. Kovacs GG. Are comorbidities compatible with a molecular pathological classification of neurodegenerative diseases? *Curr Opin Neurol.* 2019;32:279–91. DOI [10.1097/wco.0000000000000664](https://doi.org/10.1097/wco.0000000000000664).
79. Tan RH, Yang Y, Halliday GM. Multiple neuronal pathologies are common in young patients with pathologically proven Frontotemporal lobar degeneration. *Neuropathol Appl Neurobiol.* 2018;44:522–32. DOI [10.1111/nan.12455](https://doi.org/10.1111/nan.12455).
80. Forrest SL, Shepherd CE, McCann H, Kwok JB, Halliday GM, Kril JJ. Globular glial tauopathy with a mutation in MAPT and unusual TDP-43 proteinopathy in a patient with behavioural-variant frontotemporal dementia. *Acta Neuropathol.* 2021;141:791–4. DOI [10.1007/s00401-021-02297-0](https://doi.org/10.1007/s00401-021-02297-0).
81. Li H, Wetten S, Li L, et al. Candidate single-nucleotide polymorphisms from a genomewide association study of Alzheimer disease. *Arch Neurol.* 2008;65:45–53. DOI [10.1001/archneurol.2007.3](https://doi.org/10.1001/archneurol.2007.3).
82. Saunders AM, Strittmatter WJ, Schmechel D, et al. Association of apolipoprotein E allele epsilon 4 with late-onset familial and sporadic Alzheimer's disease. *Neurology.* 1993;43:1467–72. DOI [10.1212/wnl.43.8.1467](https://doi.org/10.1212/wnl.43.8.1467).
83. Robinson JL, Richardson H, Xie SX, et al. The development and convergence of co-pathologies in Alzheimer's disease. *Brain.* 2021;144:953–62. DOI [10.1093/brain/awaa438](https://doi.org/10.1093/brain/awaa438).
84. Kapasi A, DeCarli C, Schneider JA. Impact of multiple pathologies on the threshold for clinically overt dementia. *Acta Neuropathol.* 2017;134:171–86. DOI [10.1007/s00401-017-1717-7](https://doi.org/10.1007/s00401-017-1717-7).
85. Power MC, Mormino E, Soldan A, et al. Combined neuropathological pathways account for age-related risk of dementia. *Ann Neurol.* 2018;84:10–22. DOI [10.1002/ana.25246](https://doi.org/10.1002/ana.25246).
86. Boyle PA, Yang J, Yu L, et al. Varied effects of age-related neuropathologies on the trajectory of late life cognitive decline. *Brain.* 2017;140:804–12. DOI [10.1093/brain/aww341](https://doi.org/10.1093/brain/aww341).
87. McAleese KE, Colloby SJ, Thomas AJ, et al. Concomitant neurodegenerative pathologies contribute to the transition from mild cognitive impairment to dementia. *Alzheimer's Dement.* 2021;17:1121–33. DOI [10.1002/alz.12291](https://doi.org/10.1002/alz.12291).
88. Arvanitakis Z, Capuano AW, Leurgans SE, Bennett DA, Schneider JA. Relation of cerebral vessel disease to Alzheimer's disease dementia and cognitive function in elderly people: a cross-sectional study. *Lancet Neurol.* 2016;15:934–43. DOI [10.1016/s1474-4422\(16\)30029-1](https://doi.org/10.1016/s1474-4422(16)30029-1).
89. Schneider JA, Arvanitakis Z, Yu L, Boyle PA, Leurgans SE, Bennett DA. Cognitive impairment, decline and fluctuations in older community-dwelling subjects with Lewy bodies. *Brain.* 2012;135:3005–14. DOI [10.1093/brain/aww234](https://doi.org/10.1093/brain/aww234).
90. Wilson RS, Yu L, Trojanowski JQ, et al. TDP-43 pathology, cognitive decline, and dementia in old age. *JAMA Neurol.* 2013;70:1418–24. DOI [10.1001/jamaneurol.2013.3961](https://doi.org/10.1001/jamaneurol.2013.3961).
91. Boyle PA, Yu L, Wilson RS, Schneider JA, Bennett DA. Relation of neuropathology with cognitive decline among older persons without dementia. *Front Aging Neurosci.* 2013;5:50. DOI [10.3389/fnagi.2013.00050](https://doi.org/10.3389/fnagi.2013.00050).
92. Teylan MA, Mock C, Gauthreaux K, et al. Differences in symptomatic presentation and cognitive performance among participants with LATE-NC compared to FTLT-TDP. *J Neuropathol Exp Neurol.* 2021;80:1024–32. DOI [10.1093/jnen/nlab098](https://doi.org/10.1093/jnen/nlab098).
93. Koga S, Kouri N, Walton RL, et al. Corticobasal degeneration with TDP-43 pathology presenting with progressive supranuclear palsy syndrome: a distinct clinicopathologic subtype. *Acta Neuropathol.* 2018;136:389–404. DOI [10.1007/s00401-018-1878-z](https://doi.org/10.1007/s00401-018-1878-z).
94. Resende EPF, Nolan AL, Petersen C, et al. Language and spatial dysfunction in Alzheimer disease with white matter thorn-shaped astrocytes. *Neurology.* 2020;94:e1353–e1364. DOI [10.1212/WNL.00000000000008937](https://doi.org/10.1212/WNL.00000000000008937).
95. Robinson JL, Corrada MM, Kovacs GG, et al. Non-Alzheimer's contributions to dementia and cognitive resilience in The 90+ Study. *Acta Neuropathol.* 2018;136:377–88. DOI [10.1007/s00401-018-1872-5](https://doi.org/10.1007/s00401-018-1872-5).
96. Forrest SL, Crockford DR, Sizemova A, et al. Coexisting Lewy body disease and clinical parkinsonism in frontotemporal lobar degeneration. *Neurology.* 2019;92:e2472–e2482. DOI [10.1212/wnl.00000000000007530](https://doi.org/10.1212/wnl.00000000000007530).

97. Siczkowski E, Milenkovic I, Venkataramani V, et al. I716F AbetaPP mutation associates with the deposition of oligomeric pyroglutamate amyloid-beta and alpha-synucleinopathy with Lewy bodies. *J Alzheimers Dis.* 2015;44:103–14. DOI [10.3233/JAD-141524](https://doi.org/10.3233/JAD-141524).
98. Kovacs GG, Seguin J, Quadrio I, et al. Genetic Creutzfeldt-Jakob disease associated with the E200K mutation: characterization of a complex proteinopathy. *Acta Neuropathol.* 2011;121:39–57. DOI [10.1007/s00401-010-0713-y](https://doi.org/10.1007/s00401-010-0713-y).
99. Jecmenica Lukic M, Kurz C, Respondek G, et al. Copathology in progressive supranuclear palsy: does it matter? *Mov Disord.* 2020;35:984–93. DOI [10.1002/mds.28011](https://doi.org/10.1002/mds.28011).
100. Robinson JL, Yan N, Caswell C, et al. Primary tau pathology, not copathology, correlates with clinical symptoms in PSP and CBD. *J Neuropathol Exp Neurol.* 2020;79:296–304. DOI [10.1093/jnen/nlz141](https://doi.org/10.1093/jnen/nlz141).
101. Videira G, Damasio J, Pinto C, Melo-Pires M, Taipa R. Letter to the editor on "Copathology in progressive supranuclear palsy: does it matter?" *Mov Disord.* 2020;35:2124–6. DOI [10.1002/mds.28308](https://doi.org/10.1002/mds.28308).
102. Kovacs GG, Botond G, Budka H. Protein coding of neurodegenerative dementias: the neuropathological basis of biomarker diagnostics. *Acta Neuropathol.* 2010;119:389–408. DOI [10.1007/s00401-010-0658-1](https://doi.org/10.1007/s00401-010-0658-1).
103. Spires-Jones TL, Attems J, Thal DR. Interactions of pathological proteins in neurodegenerative diseases. *Acta Neuropathol.* 2017;134:187–205. DOI [10.1007/s00401-017-1709-7](https://doi.org/10.1007/s00401-017-1709-7).
104. Rodriguez RD, Suemoto CK, Molina M, et al. Argyrophilic grain disease: demographics, clinical, and neuropathological features from a large autopsy study. *J Neuropathol Exp Neurol.* 2016;75:628–35. DOI [10.1093/jnen/nlw034](https://doi.org/10.1093/jnen/nlw034).
105. Nonaka T, Masuda-Suzukake M, Hasegawa M. Molecular mechanisms of the co-deposition of multiple pathological proteins in neurodegenerative diseases. *Neuropathology.* 2018;38:64–71. DOI [10.1111/neup.12427](https://doi.org/10.1111/neup.12427).
106. Forrest SL, Kim JH, De Sousa C, et al. Coexisting Lewy body disease and clinical parkinsonism in amyotrophic lateral sclerosis. *Eur J Neurol.* 2021;28:2192–9. DOI [10.1111/ene.14849](https://doi.org/10.1111/ene.14849).
107. Boland B, Yu WH, Corti O, et al. Promoting the clearance of neurotoxic proteins in neurodegenerative disorders of ageing. *Nat Rev Drug Discov.* 2018;17:660–88. DOI [10.1038/nrd.2018.109](https://doi.org/10.1038/nrd.2018.109).
108. Tzioras M, Davies C, Newman A, Jackson R, Spires-Jones T. Invited review: APOE at the interface of inflammation, neurodegeneration and pathological protein spread in Alzheimer's disease. *Neuropathol Appl Neurobiol.* 2019;45:327–46. DOI [10.1111/nan.12529](https://doi.org/10.1111/nan.12529).
109. Yang HS, Yu L, White CC, et al. Evaluation of TDP-43 proteinopathy and hippocampal sclerosis in relation to APOE ε4 haplotype status: a community-based cohort study. *Lancet Neurol.* 2018;17:773–81. DOI [10.1016/S1474-4422\(18\)30251-5](https://doi.org/10.1016/S1474-4422(18)30251-5).
110. Dickson DW, Heckman MG, Murray ME, et al. APOE ε4 is associated with severity of Lewy body pathology independent of Alzheimer pathology. *Neurology.* 2018;91:e1182–e1195. DOI [10.1212/wnl.0000000000006212](https://doi.org/10.1212/wnl.0000000000006212).
111. Braak H, Alafuzoff I, Arzberger T, Kretschmar H, Del Tredici K. Staging of Alzheimer disease-associated neurofibrillary pathology using paraffin sections and immunocytochemistry. *Acta Neuropathol.* 2006;112:389–404. DOI [10.1007/s00401-006-0127-z](https://doi.org/10.1007/s00401-006-0127-z).
112. Braak H, Braak E. Neuropathological staging of Alzheimer-related changes. *Acta Neuropathol.* 1991;82:239–59. DOI [10.1007/BF00308809](https://doi.org/10.1007/BF00308809).
113. Thal DR, Rüb U, Orantes M, Braak H. Phases of Aβ-deposition in the human brain and its relevance for the development of AD. *Neurology.* 2002;58:1791–800. DOI [10.1212/wnl.58.12.1791](https://doi.org/10.1212/wnl.58.12.1791).
114. Irwin DJ, Brettschneider J, McMillan CT, et al. Deep clinical and neuropathological phenotyping of Pick disease. *Ann Neurol.* 2016;79:272–87. DOI [10.1002/ana.24559](https://doi.org/10.1002/ana.24559).
115. Arnold SE, Toledo JB, Appleby DH, et al. Comparative survey of the topographical distribution of signature molecular lesions in major neurodegenerative diseases. *J Comp Neurol.* 2013;521:4339–55. DOI [10.1002/cne.23430](https://doi.org/10.1002/cne.23430).
116. Ferrer I, Santpere G, van Leeuwen FW. Argyrophilic grain disease. *Brain.* 2008;131:1416–32. DOI [10.1093/brain/awm305](https://doi.org/10.1093/brain/awm305).
117. Saito Y, Ruberu NN, Sawabe M, et al. Staging of argyrophilic grains: an age-associated tauopathy. *J Neuropathol Exp Neurol.* 2004;63:911–8. DOI [10.1093/jnen/63.9.911](https://doi.org/10.1093/jnen/63.9.911).
118. Brettschneider J, Del Tredici K, Irwin DJ, et al. Sequential distribution of pTDP-43 pathology in behavioral variant frontotemporal dementia (bvFTD). *Acta Neuropathol.* 2014;127:423–39. DOI [10.1007/s00401-013-1238-y](https://doi.org/10.1007/s00401-013-1238-y).
119. Brettschneider J, Del Tredici K, Toledo JB, et al. Stages of pTDP-43 pathology in amyotrophic lateral sclerosis. *Ann Neurol.* 2013;74:20–38. DOI [10.1002/ana.23937](https://doi.org/10.1002/ana.23937).
120. Josephs KA, Murray ME, Whitwell JL, et al. Updated TDP-43 in Alzheimer's disease staging scheme. *Acta Neuropathol.* 2016;131:571–85. DOI [10.1007/s00401-016-1537-1](https://doi.org/10.1007/s00401-016-1537-1).
121. Braak H, Del Tredici K, Rüb U, de Vos RA, Jansen Steur EN, Braak E. Staging of brain pathology related to sporadic Parkinson's disease. *Neurobiol Aging.* 2003;24:197–211. DOI [10.1016/S0197-4580\(02\)00065-9](https://doi.org/10.1016/S0197-4580(02)00065-9).
122. McKeith IG, Boeve BF, Dickson DW, et al. Diagnosis and management of dementia with Lewy bodies: fourth consensus report of the DLB Consortium. *Neurology.* 2017;89:88–100. DOI [10.1212/wnl.000000000000004058](https://doi.org/10.1212/wnl.000000000000004058).
123. Brettschneider J, Irwin DJ, Boluda S, et al. Progression of alpha-synuclein pathology in multiple system atrophy of the cerebellar type. *Neuropathol Appl Neurobiol.* 2017;43:315–29. DOI [10.1111/nan.12362](https://doi.org/10.1111/nan.12362).
124. Brettschneider J, Suh E, Robinson JL, et al. Converging patterns of α-synuclein pathology in multiple system atrophy. *J Neuropathol Exp Neurol.* 2018;77:1005–16. DOI [10.1093/jnen/nly080](https://doi.org/10.1093/jnen/nly080).
125. Jellinger KA, Attems J. Challenges of multimorbidity of the aging brain: a critical update. *J Neural Transm.* 2015;122:505–21. DOI [10.1007/s00702-014-1288-x](https://doi.org/10.1007/s00702-014-1288-x).
126. McAleese KE, Walker L, Erskine D, Thomas AJ, McKeith IG, Attems J. TDP-43 pathology in Alzheimer's disease, dementia with Lewy bodies and ageing. *Brain Pathol.* 2017;27:472–9. DOI [10.1111/bpa.12424](https://doi.org/10.1111/bpa.12424).
127. Uryu K, Nakashima-Yasuda H, Forman MS, et al. Concomitant TAR-DNA-binding protein 43 pathology is present in Alzheimer disease and corticobasal degeneration but not in other tauopathies. *J Neuropathol Exp Neurol.* 2008;67:555–64. DOI [10.1097/NEN.0b013e31817713b5](https://doi.org/10.1097/NEN.0b013e31817713b5).
128. Tatsumi S, Mimuro M, Iwasaki Y, et al. Argyrophilic grains are reliable disease-specific features of corticobasal degeneration. *J Neuropathol Exp Neurol.* 2014;73:30–8. DOI [10.1097/nen.0000000000000022](https://doi.org/10.1097/nen.0000000000000022).
129. Koga S, Sanchez-Contreras M, Josephs KA, et al. Distribution and characteristics of transactive response DNA binding protein 43 kDa pathology in progressive supranuclear palsy. *Mov Disord.* 2017;32:246–55. DOI [10.1002/mds.26809](https://doi.org/10.1002/mds.26809).
130. Gil MJ, Manzano MS, Cuadrado ML, et al. Frontotemporal lobar degeneration: study of a clinicopathological cohort. *J Clin Neurosci.* 2018;58:172–80. DOI [10.1016/j.jocn.2018.10.024](https://doi.org/10.1016/j.jocn.2018.10.024).
131. Gil MJ, Manzano MS, Cuadrado ML, et al. Argyrophilic grain pathology in frontotemporal lobar degeneration: demographic, clinical, neuropathological, and genetic features. *J Alzheimers Dis.* 2018;63:1109–17. DOI [10.3233/jad-171115](https://doi.org/10.3233/jad-171115).
132. Forrest SL, Kril JJ, Kovacs GG. Association between globular glial tauopathies and frontotemporal dementia-expanding the spectrum of gliocentric disorders: a review. *JAMA Neurol.* 2021;78:1004–14. DOI [10.1001/jamaneurol.2021.1813](https://doi.org/10.1001/jamaneurol.2021.1813).
133. Takeda T. Possible concurrence of TDP-43, tau and other proteins in amyotrophic lateral sclerosis/frontotemporal lobar degeneration. *Neuropathology.* 2018;38:72–81. DOI [10.1111/neup.12428](https://doi.org/10.1111/neup.12428).
134. Soma K, Fu YJ, Wakabayashi K, Onodera O, Kakita A, Takahashi H. Co-occurrence of argyrophilic grain disease in sporadic amyotrophic lateral sclerosis. *Neuropathol Appl Neurobiol.* 2012;38:54–60. DOI [10.1111/j.1365-2990.2011.01175.x](https://doi.org/10.1111/j.1365-2990.2011.01175.x).
135. Colom-Cadena M, Grau-Rivera O, Planellas L, et al. Regional overlap of pathologies in lewy body disorders. *J Neuropathol Exp Neurol.* 2017;76:216–24. DOI [10.1093/jnen/nlx002](https://doi.org/10.1093/jnen/nlx002).



136. Koga S, Lin WL, Walton RL, Ross OA, Dickson DW. TDP-43 pathology in multiple system atrophy: colocalization of TDP-43 and  $\alpha$ -synuclein in glial cytoplasmic inclusions. *Neuropathol Appl Neurobiol*. 2018;44:707–21. DOI [10.1111/nan.12485](https://doi.org/10.1111/nan.12485).
137. Koga S, Parks A, Uitti RJ, et al. Profile of cognitive impairment and underlying pathology in multiple system atrophy. *Mov Disord*. 2017;32:405–13. DOI [10.1002/mds.26874](https://doi.org/10.1002/mds.26874).
138. Grau-Rivera O, Gelpi E, Nos C, et al. Clinicopathological correlations and concomitant pathologies in rapidly progressive dementia: a brain bank series. *Neurodegener Dis*. 2015;15:350–60. DOI [10.1159/000439251](https://doi.org/10.1159/000439251).
139. Vital A, Fernagut PO, Cannon MH, et al. The nigrostriatal pathway in Creutzfeldt-Jakob disease. *J Neuropathol Exp Neurol*. 2009;68:809–15. DOI [10.1097/NEN.0b013e3181abdae8](https://doi.org/10.1097/NEN.0b013e3181abdae8).
140. Kovacs GG, Rahimi J, Ströbel T, et al. Tau pathology in Creutzfeldt-Jakob disease revisited. *Brain Pathol*. 2017;27:332–44. DOI [10.1111/bpa.12411](https://doi.org/10.1111/bpa.12411).
141. Isaacs AM, Powell C, Webb TE, Linehan JM, Collinge J, Brandner S. Lack of TAR-DNA binding protein-43 (TDP-43) pathology in human prion diseases. *Neuropathol Appl Neurobiol*. 2008;34:446–56. DOI [10.1111/j.1365-2990.2008.00963.x](https://doi.org/10.1111/j.1365-2990.2008.00963.x).