

Original Article

Cite this article: Thomassen JQ, Tolstrup JS, Benn M, Frikke-Schmidt R (2020). Type-2 diabetes and risk of dementia: observational and Mendelian randomisation studies in 1 million individuals. *Epidemiology and Psychiatric Sciences* **29**, e118, 1–11. <https://doi.org/10.1017/S2045796020000347>

Received: 21 August 2019

Revised: 21 February 2020

Accepted: 22 March 2020

Key words:


Alzheimer's disease; dementia; Mendelian randomisation; type-2 diabetes; unspecified dementia; vascular dementia

Author for correspondence:

Ruth Frikke-Schmidt,

E-mail: ruth.frikke-schmidt@regionh.dk

Type-2 diabetes and risk of dementia: observational and Mendelian randomisation studies in 1 million individuals

Jesper Qvist Thomassen¹, Janne Schurmann Tolstrup², Marianne Benn^{1,3} and Ruth Frikke-Schmidt^{1,3} 

¹Department of Clinical Biochemistry, Rigshospitalet, Copenhagen, Denmark; ²National Institute of Public Health, University of Southern Denmark, Odense, Denmark and ³Department of Clinical Medicine, Faculty of Health and Medical Sciences, University of Copenhagen, Copenhagen, Denmark

Abstract

Aims. In observational studies, type-2 diabetes is associated with increased risk of dementia; however, the causal nature of this association remains unanswered. In an unselected nationwide study of all Danes, we wanted to test whether type-2 diabetes is associated with dementia subtypes, and to test whether potential associations are of a causal nature.

Methods. In the current study of nationwide observational registry data in all Danes above the age of 65 years ($n = 784\,434$) combined with genetic consortia data on 213 370 individuals, we investigated the associations between type-2 diabetes and Alzheimer's disease, vascular dementia, unspecified dementia and all-cause dementia, and whether observational associations were of a causal nature by applying a two-sample Mendelian randomisation strategy. We addressed key biases inherent in Mendelian randomisation approaches.

Results. Important confounders (age, ethnicity, size of community, region, civil status and education level) were captured on all 784 434 individuals and adjusted for in the models. Multifactorial adjusted hazard ratios were 1.13 (1.06–1.21) for Alzheimer's disease, 1.98 (1.83–2.14) for vascular dementia, 1.53 (1.48–1.59) for unspecified dementia and 1.48 (1.44–1.53) for all-cause dementia in persons with type-2 diabetes *v.* without. Results were similar for men and women. The two-sample Mendelian randomisation estimate for the association between the genetic instrument and Alzheimer's disease was 1.04 (0.98–1.10), consistent with sensitivity estimates, addressing pleiotropy, measurement bias and weak instrument bias.

Conclusions. In a nationwide study of all Danes above the age of 65 years, we show that type-2 diabetes is associated with major subtypes of dementia – with particularly strong associations for vascular dementia and unspecified dementia – the two types of dementia with the most obvious vascular pathologies. Although the present two-sample Mendelian randomisation approach using genetic consortia data suggests that type-2 diabetes is not a direct cause of Alzheimer's disease, we were unable to test the causal nature of type-2 diabetes for vascular dementia and unspecified dementia, because no publicly available genetic consortia data yet exist for these dementia endpoints. The causal nature of type-2 diabetes for dementia with vascular pathologies is pivotal questions to solve for future public health recommendations and therapeutic advice.

Introduction

Due to ageing of populations, the number of people with dementia worldwide is anticipated to triple between 2015 and 2050 (Livingston *et al.*, 2017). The global years of life lost due to dementia increased by 37.5% from 1990 to 2015, and dementia is now the fourth leading cause of death in high-income countries (Naghavi *et al.*, 2017). Recent estimates suggest that up to a third of all dementia may be attributable to modifiable risk factors, among these type-2 diabetes (Livingston *et al.*, 2017). The worldwide prevalence of type-2 diabetes has doubled since 1980 to 8.5% in 2014 (422 million people) reflecting that the prevalence of overweight and obesity continues to increase in all regions of the world (World Health Organization, 2016). Several large observational studies and meta-analyses have shown that type-2 diabetes is associated with higher risk of dementia (Price *et al.*, 2014; Chatterjee *et al.*, 2016). The relationship between dementia subtypes and the causal nature of this association remains however unanswered and is a central question to resolve for future public health recommendations and therapeutic advice and development.

Despite strong observational evidence for the association between type-2 diabetes and dementia, observational studies are prone to confounding and reverse causation, and therefore cannot establish causality (Katan, 1986; Smith and Ebrahim, 2003; Smith *et al.*, 2005; Hernan and Robins, 2006). Mendelian randomisation is an epidemiological approach that aims to

© The Author(s), 2020. Published by Cambridge University Press. This is an Open Access article, distributed under the terms of the Creative Commons Attribution licence (<http://creativecommons.org/licenses/by/4.0/>), which permits unrestricted re-use, distribution, and reproduction in any medium, provided the original work is properly cited.

circumvent confounding and reverse causation using genetic variants in human populations. Because of random assortment of alleles at conception, genetic variants associated with a modifiable exposure are randomly distributed in relation to potential confounders (Smith and Ebrahim, 2003; Smith *et al.*, 2005). Therefore, genetic variants that associate with type-2 diabetes can be used as unconfounded proxies to construct a genetic instrument to study the causal nature of the association between type-2 diabetes and risk of dementia. Furthermore, because germline variation is determined at gamete formation and conception and remains unchanged throughout life, Mendelian randomisation minimises the influence of reverse causation. Although Mendelian randomisation methods are not influenced by confounding and reverse causation, strong assumptions are made when the genetic instrument is constructed.

In the current study, we combine the use of a nationwide registry-based study in the Danish population with a two-sample Mendelian randomisation approach to evaluate associations between type-2 diabetes and dementia subtypes and to study the causal nature of potential associations. First, we used a nationwide registry-based study in the Danish population to test the association between type-2 diabetes and risk of Alzheimer's disease, vascular dementia, unspecified dementia and all-cause dementia. Second, we used publicly available consortia data to construct several instruments from genetic variants associated with type-2 diabetes. We investigated the validity of the genetic instruments using various methods and sensitivity analyses. Finally, we used two-sample instrumental variable analysis to test whether the association between type-2 diabetes and Alzheimer's disease is causal.

Method

Study populations and consortia data

Nationwide observational study

The Danish Civil Registration System records all births, immigrations, emigrations and deaths in Denmark by means of civil registration numbers, which uniquely identify all inhabitants in Denmark and include information regarding age, sex, ethnicity and civil status. The Danish Civil Registration System is 100% complete and for practical purposes, no persons are lost to follow-up (Pedersen *et al.*, 2006). Studies were approved by the National Board of Health and the local Data Protection office.

Genetic consortia data

We downloaded summary estimates of genetic variants with effect on type-2 diabetes from the DIAbetes Genetics Replication And Meta-analysis (DIAGRAM) consortium (Scott *et al.*, 2017) and summary estimates of genetic variants with effect on the risk of Alzheimer's disease from the International Genomics of Alzheimer's Project (IGAP) consortium (Lambert *et al.*, 2013). The consortia are described in detail in the online Supplementary Methods section.

Study design

The nationwide prospective cohort study was designed using 1st of January 2004 as baseline where age and covariates were determined from registries (Fig. 1a). We limited the study to the population above 65 years of age at baseline and included 784 434 individuals. Type-2 diabetes was a registered diagnose code in

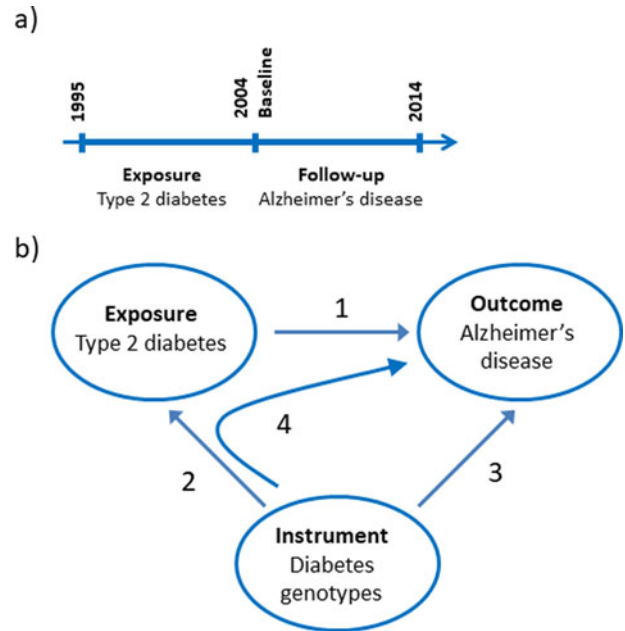


Fig. 1. Study design. (a) Design of the observational study of the association between type-2 diabetes and Alzheimer's disease, vascular dementia, unspecified dementia and all-cause dementia. (b) Design of the Mendelian randomisation study: association of type-2 diabetes with Alzheimer's disease (1), construction of genetic instruments from diabetes associated genotypes (2), association of genetic instruments with Alzheimer's disease (3) and using instrumental variable analysis (4).

the years 1995–2003. Dementia endpoints were determined in the period following the baseline from 2004 to 2014.

We used a two-sample Mendelian randomisation design to test the hypothesis whether type-2 diabetes causes Alzheimer's disease (Fig. 1b) (Burgess *et al.*, 2015). First, we tested if a type-2 diabetes diagnosis is associated with higher risk of Alzheimer's disease using a nationwide prospective cohort study of the Danish population. Second, we constructed a genomic instrument where the individual genetic variants were associated with type-2 diabetes using the summarised data from DIAGRAM. Third, we calculated the causal estimate whether type-2 diabetes-affected risk of Alzheimer's disease using instrumental variable analysis. Last, we investigated whether a potential causal effect of type-2 diabetes was consistent with the corresponding observational association and evaluated the validity of the genetic instrument in sensitivity analyses.

Diabetes diagnoses and dementia endpoints

In the nationwide observational study, information on diagnoses of Alzheimer's disease, vascular dementia, unspecified dementia and type-2 diabetes was collected from the Danish National Patient Registry with data on all patient contacts from all clinical hospital departments in Denmark since 1977 and including emergency wards and out-patient clinics from 1995. Time of deaths was obtained from the National Danish Causes of Death Registry with data on causes of all deaths in Denmark as reported by hospitals and general practitioners since 1977. Date of birth and time of emigration and/or immigration were obtained from the Danish Civil Registration System.

The diagnoses in the Danish National Patient Registry have been coded using World Health Organization International Classification of Disease and related health problems 10th

revision (ICD10) from 1995. Type-2 diabetes was coded ICD10 as E11, E13 or E14, Alzheimer's disease F00 and G30, vascular dementia F01 and unspecified dementia F03. Furthermore, we constructed an all-cause dementia endpoint combining the codes from Alzheimer's disease, vascular dementia and unspecified dementia with censoring at the earliest date of one of the three diagnoses. The validity of dementia diagnoses in the Danish registries has previously been evaluated (Phung *et al.*, 2011; Rasmussen, 2016). Follow-up ended at occurrence of event (dementia diagnosis), death, emigration or on 31st December 2014 whichever came first, and was 100% complete, that is, no individual was lost to follow-up. Median follow-up time was 9.9 years and total time-at-risk was 5 749 753 person-years. Individuals with events (diagnosed with dementia) before baseline were excluded from the observational study.

Genetic instruments

Genetic variants associated with type-2 diabetes with p -values $<10^{-7}$ were selected from the DIAGRAM dataset. The threshold of $<10^{-7}$ was selected to ensure a high degree of independence of association between the genetic variants and type-2 diabetes even with multiple testing (Panagiotou *et al.*, 2012). Pairwise linkage disequilibrium (LD) between genetic variants was determined using the SNIIPA website (Arnold *et al.*, 2015). Genetic variants with LD $r^2 \geq 0.8$ were grouped and the genetic variant with the lowest p value in each group was selected for the genetic instrument. This procedure was repeated, constructing genetic instruments with pairwise $r^2 < 0.8$, $r^2 < 0.6$, $r^2 < 0.4$ and $r^2 < 0.2$, respectively. The genetic instruments are shown in online Supplementary Table 1.

Genetic variants directly affecting Alzheimer's disease are not valid in a genetic instrument, because the instrument is constructed to test the causal nature of a specific intermediate trait, in this case type-2 diabetes, for Alzheimer's disease. The apolipoprotein E gene (*APOE*) on chromosome 19 is strongly directly associated with Alzheimer's disease, hence all genetic variants near the *APOE* gene were excluded from all genetic instruments (MR-Egger plot with the *APOE* variants is shown in online Supplementary Fig. 1). Further, a fifth genetic instrument, referred to as the pathway instrument, was constructed including the genetic variants from the $r^2 < 0.2$ instrument without any known biological associations that would disqualify the genetic variant – an example of a disqualifying gene is the highly pleiotropic *CDKN2A/B* gene (online Supplementary Table 1). The validity of a genetic instrument depends on whether any of the genetic variants included are associated with confounders or are directly affecting Alzheimer's disease. Therefore, we investigated whether the pathway instrument was associated with known confounders for type-2 diabetes and Alzheimer's disease using MR-Base (Gibran *et al.*, 2018) with appropriate summary estimates from the Global Lipids Genetics Consortium (GLGC) (low-density lipoprotein (LDL) cholesterol, high-density lipoprotein (HDL) cholesterol and triglycerides), the Genetic Investigation of Anthropometric Traits (GIANT) (body mass index (BMI) and waist to hip ratio), the UK Biobank (BMI, systolic blood pressure, diastolic blood pressure, moderate physical activity, low physical activity and strenuous sport), the Social Science Genetic Association Consortium (SSGAC) (years of schooling) and finally for the causal association, the IGAP (Alzheimer's disease).

The instrument strength of each genetic variant was estimated using the formula for the F -statistics in (Burgess and Thompson, 2011). Sensitivity analyses were performed by restricting the

pathway instrument to genetic variants with instrument strength >50 , >75 and >100 .

Statistical analysis

Stata MP 14 and Stata SE 14 with the *mrr* package were used for the observational study and for the two-sample Mendelian randomisation study, respectively (Spiller *et al.*, 2019). Because Alzheimer's disease diagnoses before age 65 often have other aetiologies than the common late onset form of dementia, we included people >65 years of age in the observational nationwide study. Cox regression models with age as timescale were used to calculate hazard ratios with 95% confidence intervals (CIs). Multivariable Cox models were adjusted for gender, ethnicity, civil status, highest level of education, size of community/residential area and region of living. Furthermore, we split the dataset into 2-year intervals to capture variation in dementia diagnosis practice. To test whether reverse causation affected our results, a sensitivity analysis was made where dementia diagnoses in the first 2 years following baseline were excluded from the analysis. The proportional hazard assumption was investigated by stratifying individually on the covariates (online Supplementary Table 2). No major violations were found.

To obtain robust causal estimates of the risk of diabetes on Alzheimer's disease using the summary genome-wide association study data, we performed regression analysis using inverse variance weighting and evaluated the validity, weak instrument bias and pleiotropic effects using Mendelian randomisation Egger regression (MR-Egger) (Bowden *et al.*, 2015), weighted median (Bowden *et al.*, 2016a, b) and modal estimates (Hartwig *et al.*, 2017). Inverse variance weighted estimator assumes no pleiotropy and that each genetic variant fulfils the Mendelian randomisation assumptions. The MR-Egger estimator allows and adjusts for pleiotropy. We used the SIMulation EXtrapolation method (SIMEX) in the cases where MR-Egger regression showed NO Measurement Error (NOME) assumption violation. NOME violation is a type of regression dilution bias. Weighted median and modal estimators relaxed the assumption that all genetic variants in the instrument must be valid using different methods yielding consistent causal estimates even when more than 50% of the variants are invalid.

Results

Baseline characteristics of the 784 434 individuals by gender combined and stratified by sex are shown in Table 1. Age at entry, ethnicity, size of community, region, civil status and education level are shown. Individuals with type-2 diabetes (5.1%) were more often men, had immigrant background, were widowed or divorced and high school or less as the highest education obtained compared to individuals without type-2 diabetes (95%).

Type-2 diabetes and risk of dementia: observational estimates

Multifactorial adjusted hazard ratios were 1.13 (95% CI: 1.06–1.21) for Alzheimer's disease, 1.98 (1.83–2.14) for vascular dementia, 1.53 (1.48–1.59) for unspecified dementia and 1.48 (1.44–1.53) for all-cause dementia in persons with type-2 diabetes *v.* without (Fig. 2). Results were similar for men and women.

Table 1. Characteristics of study participants in the observational study by type-2 diabetes status at baseline

	All		Women		Men	
	No type-2 diabetes	Type-2 diabetes	No type-2 diabetes	Type-2 diabetes	No type-2 diabetes	Type-2 diabetes
<i>N</i> (%)	744 440 (94.9%)	39 994 (5.1%)	429 700 (95.5%)	20 208 (4.5%)	314 740 (94.1%)	19 786 (5.9%)
Sex – women	57.7% (429 700)	50.5% (20 208)	–	–	–	–
Age at entry						
25%	69.1	69.7	69.6	70.6	68.6	68.9
Median	74.2	74.7	75.1	76.1	73.1	73.4
75%	80.4	80.6	81.6	82.1	78.9	78.8
Ethnicity						
Immigrant	3.5% (25 486)	5.5% (2100)	3.8% (16 228)	5.8% (1175)	2.9% (9257)	4.7% (379)
Descendant	0.1% (891)	0.1% (39)	0.1% (512)	0.1% (23)	0.1% (925)	0.1% (16)
Community size						
Greater Copenhagen	27.9% (207 603)	30.2% (12 067)	29.3% (126 055)	30.5% (6168)	25.9% (81 548)	29.8% (5899)
>50 000	7.7% (57 426)	9.1% (3651)	8.2% (35 106)	9.9% (1996)	7.1% (22 320)	8.4% (1655)
500– 50 000	50.2% (373 343)	48.4% (19 372)	50.9% (218 609)	49.1% (9923)	49.2% (154 733)	47.8% (9449)
<500	14.2% (106 069)	12.3% (4904)	11.6% (49 930)	10.5% (2121)	17.8% (56 139)	14.1% (2783)
Region						
Capital region	29.0% (215 974)	28.6% (11 443)	30.3% (130 211)	27.9% (5633)	27.2% (85 763)	29.4% (5810)
Middle region	21.1% (157 194)	20.1% (8058)	20.8% (89 339)	20.7% (4176)	21.6% (67 855)	19.6% (3882)
Southern region	22.9% (170 539)	24.2% (9680)	22.6% (97 020)	24.8% (5007)	23.4% (73 519)	23.6% (4673)
Zealand region	15.4% (114 475)	15.8% (6310)	15.0% (64 512)	15.3% (3096)	15.9% (49 963)	16.2% (3214)
Northern region	11.6% (86 258)	11.3% (4503)	11.3% (48 618)	11.4% (2296)	12.0% (37 640)	11.2% (2207)
Civil status						
Married	51.3% (381 698)	47.3% (18 904)	38.8% (166 733)	32.1% (6493)	68.3% (214 965)	62.7% (12 411)
Single	5.6% (41 973)	6.3% (2521)	5.2% (22 171)	4.7% (948)	6.3% (19 802)	8.0% (1573)
Widowed	33.7% (250 702)	35.0% (13 997)	46.1% (198 247)	51.6% (10 424)	16.7% (52 455)	18.1% (3573)
Divorced	9.4% (70 067)	11.4% (4572)	9.9% (42 549)	11.6% (2343)	8.7% (27 518)	11.3% (2229)
Highest education						
High school or less	45.7% (340 165)	49.1% (19 646)	50.2% (215 850)	55.0% (11 108)	39.5% (124 315)	43.2% (8538)
Short higher education	25.1% (187 027)	23.4% (9363)	19.8% (84 979)	15.4% (3121)	32.4% (102 048)	31.5% (6242)
Bachelor	8.6% (63 698)	6.1% (2452)	8.1% (34 624)	4.7% (944)	9.2% (29 074)	7.6% (1508)
Master or PhD	2.7% (19 767)	1.9% (748)	1.0% (4190)	0.4% (89)	4.9% (15 577)	3.3% (659)
Before register start	16.1% (120 202)	16.0% (6381)	19.3% (83 083)	20.8% (4198)	11.8% (37 119)	11.0% (2183)
Unknown	1.8% (13 581)	3.5% (1404)	1.6% (6974)	3.7% (748)	2.1% (6607)	3.3% (656)

Values are percent (number). Region refers to the five administrative regions in which the healthcare system in Denmark is divided into.

Causal effect of type-2 diabetes on risk of dementia

We applied the inverse variance weighted method for estimating causal inferences on five different genetic instruments based on the biological pathway and/or LD level and applied three different sensitivity methods to examine the validity of the genetic

instruments. The genetic instruments are shown in online Supplementary Table 1. The instruments based solely on LD levels all showed violation of the NOME assumption (NOME estimate below 90%) according to MR-Egger regression (online Supplementary Fig. 2, right panel). MR-Egger with SIMEX was

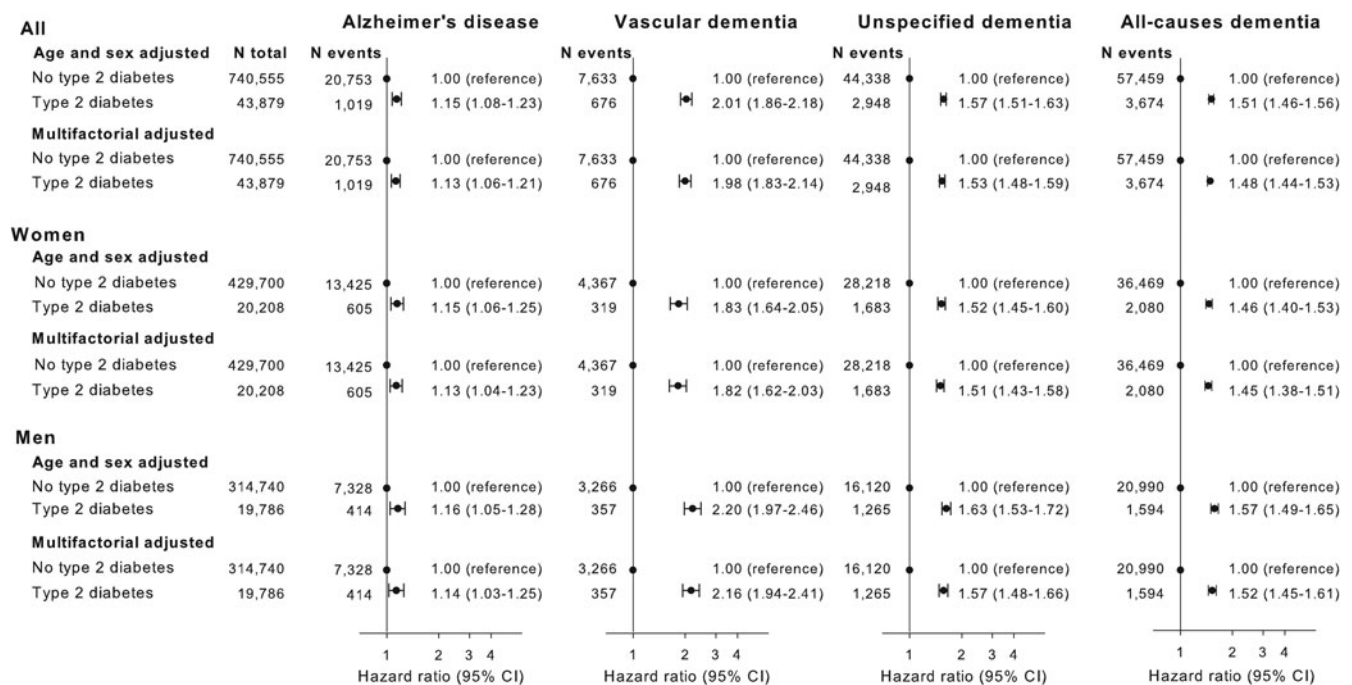


Fig. 2. Result of observational study. Risk of Alzheimer's disease, vascular dementia, unspecified dementia and all-cause dementia as a function of type-2 diabetes status for both genders and separately adjusted for age, gender, educational level, ethnicity, community size, region and civil status.

used to counter the NOME-violation and showed that $LD < 0.8$ and $LD < 0.6$ instrument had a weak pleiotropy, whereas the $LD < 0.4$ and $LD < 0.2$ did not show signs of pleiotropy (online Supplementary Fig. 2, middle panel). The pathway instrument showed no pleiotropy or NOME violation using the MR-Egger regression. MR-Egger plots and funnel plots are shown for each instrument in online Supplementary Fig. 3. The inverse variance weighted estimate for the association between the pathway instrument (variants with pairwise $LD < 0.2$ and without any known association with potential confounders, Alzheimer's disease and type-1 diabetes) and Alzheimer's disease was 1.04 (0.98–1.10) and was consistent with three sensitivity estimates, 0.98 (0.84–1.14), 1.03 (0.96–1.10) and 1.06 (0.91–1.22) for the MR-Egger, median weighted and modal methods, respectively (Fig. 3). The individual variants in the pathway instrument are shown as a forest plot in online Supplementary Fig. 4. Restricting the pathway instrument to variants with an F -statistics > 50 , > 75 and > 100 pulled the association towards the null hypothesis with greater instrument strength (online Supplementary Fig. 5). Results for instruments based solely on LD levels were largely similar to those observed for the pathway instrument (Fig. 3).

Associations between the pathway instrument and possible known confounders were investigated using MR-base (Gibran *et al.*, 2018) (Fig. 4). The pathway instrument was weakly associated with higher concentrations of triglycerides ($\beta = 0.03$, p value = 0.004), and LDL cholesterol ($\beta = 0.02$, p value = 0.01) according to the inverse variance weighted method, however with p values not meeting a Bonferroni corrected level of significance and with non-significant results from MR-Egger and weighted median methods. All other tested confounders were not associated with the pathway instrument (Fig. 4).

Discussion

In 784 434 citizens above 65 years of age from the Danish general population, we found that type-2 diabetes was associated observationally with high risk of dementia subtypes with particularly strong associations for vascular disease and unspecified dementia. Type-2 diabetes due to genetic variation was not associated with the risk of Alzheimer's disease when applying a two-sample Mendelian randomisation study of the DIAGRAM and IGAP consortia including 213 370 individuals. The null finding between genetically determined type-2 diabetes and Alzheimer's disease was consistent through various sensitivity analyses testing for pleiotropy, weak instrument bias and no-measurement-error bias, as well as after controlling for potential confounding of the genetic instruments by including genetic lipid, BMI and hypertension consortia of $> 500\ 000$ individuals.

To the best of our knowledge, a scrutinisation of potential pleiotropy-, weak or invalid instruments, and no-measurement-error bias has not been done previously in a two-sample Mendelian randomisation study investigating a potential causal relationship between type-2 diabetes and Alzheimer's disease. Two previous Mendelian randomisation studies used older versions of DIAGRAM data from 2012. These studies neither investigated pleiotropy, nor validity of instruments or other potential sources of bias (Oestergaard *et al.*, 2015; Larsson *et al.*, 2017). Observational studies report risk estimates between 1.40 and 1.56 for type-2 diabetes in predicting Alzheimer's disease (Gudala *et al.*, 2013; Price *et al.*, 2014; Chatterjee *et al.*, 2016). However, the size of the observational studies varies, and the different studies apply versatile schemes for adjusting for covariates. In contrast to our data, none of the studies were nationwide and were therefore prone to selection bias. Furthermore, the studies

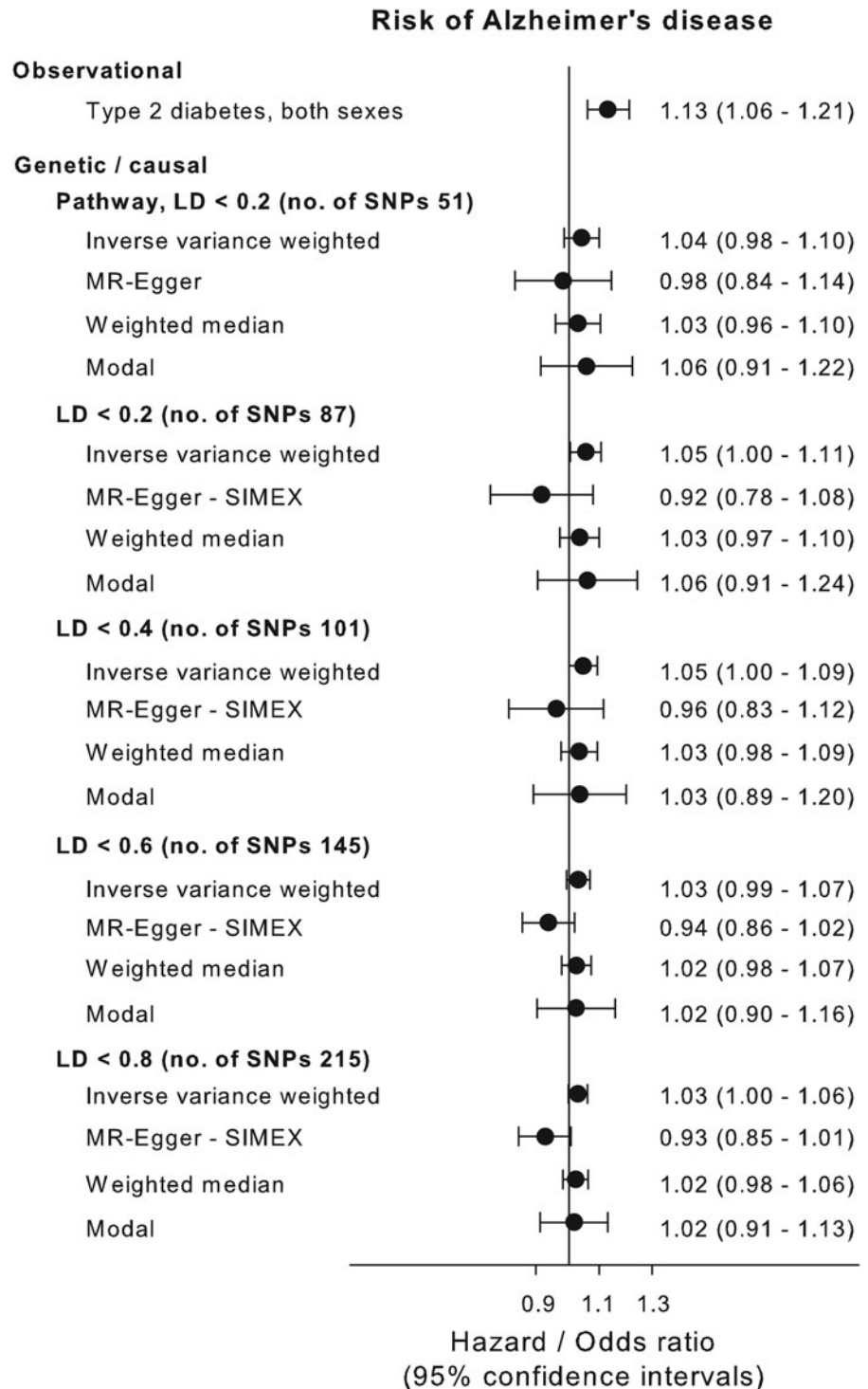


Fig. 3. Causal estimates. Causal and observational risk estimates of Alzheimer's disease for type-2 diabetes. Causal risk was estimated using summary risk estimates from IGAP on genetic variants tested in DIAGRAM using conventional inverse variance weighted Mendelian randomisation analysis, Egger-Mendelian randomisation (MR-Egger), weighted median Mendelian randomisation and modal-based Mendelian randomisation for each of the five genetic instruments. Where needed the MR-Egger SIMEX estimation is used because of NOME bias (see online Supplementary Fig. 3). NOME=NO measurement error; SIMEX=SIMulation EXtrapolation method. Abbreviations for consortia are explained in the 'Method' section.

lack adjustment for potential confounders such as achieved educational level, civil status and demographic factors.

In two-sample Mendelian randomisation studies, a set of assumptions concerning the genetic instrument needs to be fulfilled to make valid conclusions about causality. Fortunately, we have methods that inform us of unbalanced pleiotropy and genetic heterogeneity assessed as NOME bias (MR-Egger method), weak instruments (F -statistics) and invalid instruments (median weighted and modal methods). Using these methods, we have demonstrated that we can remove unbalanced pleiotropy and

NOME bias by restricting our genetic instrument to LD < 0.2 and removing potentially invalid instruments because of direct association with Alzheimer's disease. Furthermore, the robustness of the results when comparing with weighted median and modal methods indicate that we do have a valid instrument. The associations of the pathway instrument with concentrations of triglycerides and LDL cholesterol might invalidate the instrument if these lipid traits are causally associated with Alzheimer's disease. This has previously been investigated using two-sample Mendelian randomisation and no evidence of causality was

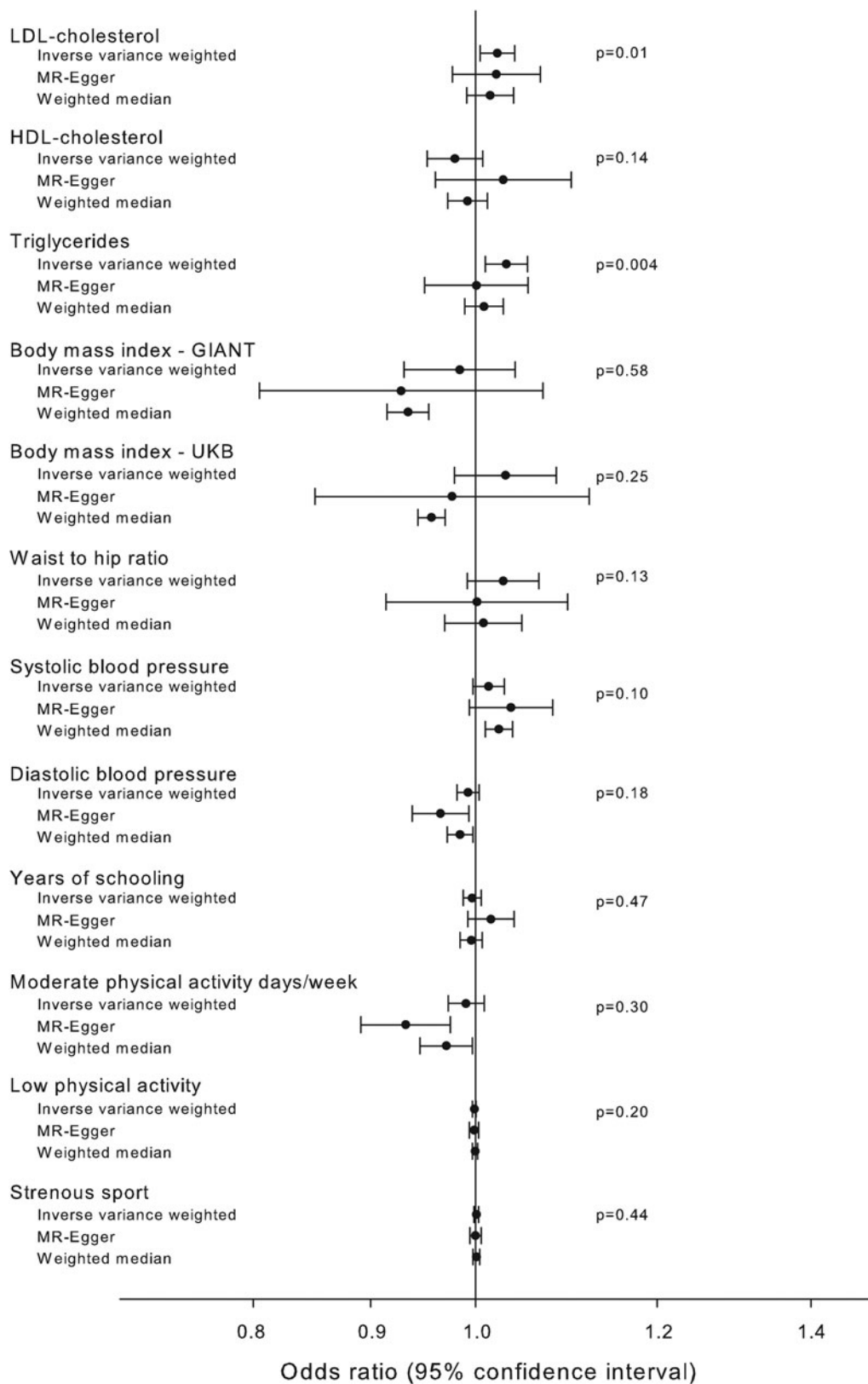


Fig. 4. Association of pathway instrument with possible confounders. Estimated association of the pathway instrument with possible confounders of Alzheimer's disease and diabetes. The estimators using inverse variance weighted, MR-Egger and median weighted methods are shown. Summary estimates from GLGC (LDL cholesterol, HDL cholesterol and triglycerides), GIANT (BMI and waist to hip ratio), UK Biobank (BMI, systolic blood pressure, diastolic blood pressure, moderate physical activity, low physical activity and strenuous sport), SSGAC (years of schooling) and IGAP (Alzheimer's disease) consortia. Abbreviations for consortia are explained in the 'Method' section.

observed (Oestergaard *et al.*, 2015; Benn *et al.*, 2017; Larsson *et al.*, 2017). Furthermore, the associations with concentrations of triglycerides and LDL cholesterol were small and did not meet statistical significance after Bonferroni correction. Finally, by restricting the analysis to variants with an *F*-statistics above 100, we show that the strongest individual variants, that all are well known type-2 diabetes variants, pull the association with Alzheimer's disease further towards the null.

Type-2 diabetes is known to cause both macrovascular and microvascular complications and has been linked to brain atrophy likely caused by microaneurysms and/or microhaemorrhages arising due to hyperglycaemia (Barrett *et al.*, 2017). Whether brain atrophy directly causes or is responsible for a more rapid progression of dementia is a matter of debate (Barrett *et al.*, 2017). We found particularly strong observational associations for vascular dementia and unspecified dementia, suggesting involvement of macro- and/or microvascular pathologies. This may indicate a potential causal role of type-2 diabetes on the risk of dementias with the most obvious vascular pathologies. Whereas the present two-sample Mendelian randomisation suggests that type-2 diabetes is not a direct cause of Alzheimer's disease, we were unable to test the causal nature of type-2 diabetes for vascular dementia and unspecified dementia, because no publicly available genetic consortia data yet exists for these dementia endpoints.

Strengths of the study include examination of the entire Danish population above 65 years of age with access to individual citizen data of high validity and no losses to follow-up. The observational national data are unique due to a total lack of selection bias, since diagnoses from all hospital contacts, as well as all socioeconomic data are compiled in the national registries. The use of a two-sample Mendelian randomisation design, including a series of sensitivity analyses ensuring the validity of the genetic instrument, allowed us to examine potential causal effects of type-2 diabetes on Alzheimer's disease, largely without confounding and reverse causation. Furthermore, the genetic instrument was based on the DIAGRAM 2017 data which has a higher coverage of genetic variants throughout the genome compared with the previously used DIAGRAM 2012 data (Oestergaard *et al.*, 2015; Larsson *et al.*, 2017).

A limitation of the study is that the analysis is based on clinical diagnoses of dementia, as reflected in clinical practice. This is an important point, since discrepancies between clinical and neuropathological diagnoses of dementia and the relationship with type-2 diabetes have been observed (Sutherland *et al.*, 2017). A recent study compared clinical diagnoses and pathological autopsy findings and concluded that Alzheimer's disease and vascular dementia display different profiles of organ and vascular damage as well as prevalence of concomitant hypertension and diabetes. Diabetes and hypertension were overrepresented in vascular dementia, whereas the prevalence of diabetes in Alzheimer's disease was comparable to that in the general population (Javanshiri *et al.*, 2018). A body of neuropathological evidence shows that key features of Alzheimer's disease, such as extracellular deposits of amyloid β and intraneuronal aggregates of hyperphosphorylated tau, are not more frequent in patients with type-2 diabetes compared to individuals without (Arvanitakis *et al.*, 2006; Abner *et al.*, 2016; Pruzin *et al.*, 2018). This is also supported by the fact that type-2 diabetes is not associated with cerebrospinal or positron emission tomography biomarkers of increased amyloid β accumulation (Moran *et al.*, 2015). Taken together, the present findings suggesting that type-2 diabetes is not causally associated with Alzheimer's disease, are in line with

studies on neuropathological evidence (Arvanitakis *et al.*, 2006; Abner *et al.*, 2016; Sutherland *et al.*, 2017; Javanshiri *et al.*, 2018; Pruzin *et al.*, 2018). Hence, the present clinical diagnoses are probably appropriate to use for the current study. This is further supported by major efforts in Denmark since the mid-90s, in standardising dementia diagnoses according to guidelines.

In conclusion, we showed in an unselected nationwide study of all Danes above 65 years of age that type-2 diabetes is associated with major subtypes of dementia – with particularly strong associations for vascular dementia and unspecified dementia – the two types of dementia with the most obvious vascular pathologies. Whereas the present two-sample Mendelian randomisation approach using genetic consortia data suggests that type-2 diabetes is not a direct cause of Alzheimer's disease, we were unable to test the causal nature of type-2 diabetes for vascular dementia and unspecified dementia, because no publicly available genetic consortia data yet exist for these dementia endpoints. The causal nature of type-2 diabetes for dementia with vascular pathologies is pivotal questions to solve for future public health recommendations and therapeutic advice.

Supplementary material. The supplementary material for this article can be found at <https://doi.org/10.1017/S2045796020000347>.

Data. The data used for the nationwide observational study are available from Statistics Denmark for authorised researchers. The data used for Mendelian randomisation studies are available from the respective consortia's webpages: IGAP: web.pasteur-lille.fr/en/recherche/u744/igap/igap_download.php; DIAGRAM: www.diagram-consortium.org.

Acknowledgements. We acknowledge the DIAbetes Genetics Replication And Meta-analysis (DIAGRAM) consortium and the International Genomics of Alzheimer's Project (IGAP) for providing summary results data for these analyses. The investigators within IGAP contributed to the design and implementation of IGAP and/or provided data but did not participate in analysis or writing of this report.

Financial support. This work was supported by the Lundbeck Foundation (grant no. R278-2018-804), the Danish Heart Foundation, the Research Council at Rigshospitalet, the Danish Alzheimer Research Fund, M.L. Jørgensen & Gunnar Hansen's Fund, the Research Fund at the Capital Region of Denmark and the Danish Heart Foundation, all to RFS. The funding sources had no role in the design and conduct of the study; collection, management, analysis and interpretation of the data; preparation, review or approval of the manuscript and the decision to submit the manuscript for publication.

Conflict of interest. None.

Ethical standards. The data used for the nationwide observational study are available from Statistics Denmark for authorised researchers. The data used for Mendelian randomisation studies are available from the webpages of the consortia. None of these types of data need individual ethics approval.

References

- Abner EL, Nelson PT, Kryscio RJ, Schmitt FA, Fardo DW, Woltjer RL, Cairns N, Yu L, Dodge HH, Xiong C, Masaki K, Tyas SL, Bennet DA, Schneider JA and Arvanitakis Z (2016) Diabetes is associated with cerebrovascular but not Alzheimer's disease neuropathology. *Alzheimer's & Dementia* **12**, 882–889.
- Arnold M, Raffler J, Pfeufer A, Suhre K and Kastenmüller G (2015) SNIpA: an interactive, genetic variant-centered annotation browser. *Bioinformatics* **31**(8), 1334–1336 (Oxford, England). Available at <http://www.snipa.org>. Accessed January 2019.
- Arvanitakis Z, Schneider JA, Wilson RS, Li Y, Arnold SE, Wang Z and Bennet DA (2006) Diabetes is related to cerebral infarction but not to AD pathology in older persons. *Neurology* **67**, 1960–1965.

- Barrett EJ, Liu Z, Khamaisi M, King GL, Klein R, Klein BEK, Hughes TM, Craft S, Freedman BI, Bowden DW, Vinik AI and Casellini CM (2017) Diabetic microvascular disease. An Endocrine Society Scientific Statement. *The Journal of Clinical Endocrinology and Metabolism* **102**, 4343–4410.
- Benn M, Nordestgaard BG, Frikke-Schmidt R and Tybjaerg-Hansen A (2017) Low LDL cholesterol, PCSK9 and HMGCR genetic variation, and risk of Alzheimer's disease and Parkinson's disease: Mendelian randomisation study. *British Medical Journal* **357**, j1648.
- Bowden J, Smith GD and Burgess S (2015). Mendelian randomization with invalid instruments: effect estimation and bias detection through Egger regression. *International Journal of Epidemiology* **44**, 512–525.
- Bowden J, Del Greco MF, Minell C, Smith GD, Sheenan NA and Thompson JR (2016a) Assessing the suitability of summary data for two-sample Mendelian randomization analyses using MR-Egger regression: the role of the I^2 statistic. *International Journal of Epidemiology* **45**, 1961–1974.
- Bowden J, Smith GD, Haycock PC and Burgess S (2016b) Consistent estimation in Mendelian randomization with some invalid instruments using a weighted median estimator. *Genetic Epidemiology* **40**, 304–314.
- Burgess S and Thompson SG (2011) Avoiding bias from weak instruments in Mendelian randomization studies. *International Journal of Epidemiology* **40**, 755–764.
- Burgess S, Scott RA, Timpson NJ, Smith GD and Thompson SG (2015) Using published data in Mendelian randomization: a blueprint for efficient identification of causal risk factors. *European Journal of Epidemiology* **30**, 543–552.
- Chatterjee S, Peters SAE, Woodward M, Arango SM, Batty GD, Beckett N, Beiser A, Borenstein AR, Crane PK, Haan M, Hassing LB, Hayden KM, Kiyohara Y, Larson EB, Li CY, Ninomiya T, Ohara T, Peters R, Russ TC, Seshadri S, Strand BH, Walker R, Xu W and Huxley RR (2016) Type 2 diabetes as a risk factor for dementia in women compared with men: a pooled analysis of 2.3 million people comprising more than 100,000 cases of dementia. *Diabetes Care* **39**, 300–307.
- Gibran H, Jie Z, Wade KH, Laurin C, Elsworth B, Burgess S, Bowden J, Langdon R, Tan V, Yarmolinsky J and Hashem A (2018) The MR-base platform supports systematic causal inference across the human genome. *eLife* **7**, e34408.
- Gudala K, Bansal D, Schifano F and Bhansali A (2013) Diabetes mellitus and risk of dementia: a meta-analysis of prospective observational studies. *Journal of Diabetes Investigation* **4**, 640–650.
- Hartwig FP, Smith GD and Bowden J (2017) Robust inference in summary data Mendelian randomisation via the zero modal pleiotropy assumption. *International Journal of Epidemiology* **46**, 1985–1998.
- Hernan MA and Robins JM (2006) Instruments for causal inference. An epidemiologist's dream? *Epidemiology (Cambridge, Mass.)* **17**, 360–372.
- Javanshiri K, Waldö ML, Friberg N, Sjövall F, Wickerström K, Haglund M and Englund E (2018) *Journal of Alzheimer's Disease* **65**, 1247–1258.
- Katan MB (1986) Apolipoprotein E isoforms, serum cholesterol, and cancer. *The Lancet* **1**, 507–508.
- Lambert JC, Ibrahim-Verbaas CA, Harold D, Naj AC, Sims R, Bellenguez C, DeStafano AL, Bis JC, Beecham GW, Grenier-Boley B, Russo G, Thornton-Wells TA, Jones N, Smith AV, Chouraki V, Thomas C, Ikram MA, Zelenika D, Vardarajan BN, Kamatani Y, Lin CF, Gerrish A, Schmidt H, Kunkle B, Dunstan ML, Ruiz A, Bihoreau MT, Choi SH, Reitz C, Pasquier F, Cruchaga C, Craig D, Amin N, Berr C, Lopez OL, De Jager PL, Deramecourt V, Johnston JA, Evans D, Lovestone S, Letenneur L, Morón FJ, Rubinsztein DC, Eiriksdóttir G, Sleegers K, Goate AM, Fiévet N, Huentelman MW, Gill M, Brown K, Kambh MI, Keller L, Barberger-Gateau P, McGuinness B, Larson EB, Green R, Myers AJ, Dufouil C, Todd S, Wallon D, Love S, Rogaeva E, Gallacher J, St George-Hyslop P, Clarimon J, Lleo A, Bayer A, Tsuang DW, Yu L, Tsolaki M, Bossù P, Spalletta G, Proitsi P, Collinge J, Sorbi S, Sanchez-Garcia F, Fox NC, Hardy J, Deniz Naranjo MC, Bosco P, Clarke R, Brayne C, Galimberti D, Mancuso M, Matthews F, European Alzheimer's Disease Initiative (EADI), Genetic and Environmental Risk in Alzheimer's Disease; Alzheimer's Disease Genetic Consortium, Cohorts for Heart and Aging Research in Genomic Epidemiology, Moebus S, Mecocci P, Del Zompo M, Maier W, Hampel H, Pilotto A, Bullido M, Panza F, Caffarra P, Nacmias B, Gilbert JR, Mayhaus M, Lannefelt L, Hakonarson H, Pichler S, Carrasquillo MM, Ingelsson M, Beekly D, Alvarez V, Zou F, Valladares O, Younkin SG, Coto E, Hamilton-Nelson KL, Gu W, Razquin C, Pastor P, Mateo I, Owen MJ, Faber KM, Jonsson PV, Combarros O, O'Donovan MC, Cantwell LB, Soininen H, Blacker D, Mead S, Mosley TH Jr, Bennett DA, Harris TB, Fratiglioni L, Holmes C, de Bruijn RF, Passmore P, Montine TJ, Bettens K, Rotter JJ, Brice A, Morgan K, Foroud TM, Kukull WA, Hannequin D, Powell JF, Nalls MA, Ritchie K, Lunetta KL, Kauwe JS, Boerwinkle E, Riemenschneider M, Boada M, Hiltunen M, Martin ER, Schmidt R, Rujescu D, Wang LS, Dartigues JF, Mayeux R, Tzourio C, Hofman A, Nöthen MM, Graff C, Psaty BM, Jones L, Haines JL, Holmans PA, Lathrop M, Pericak-Vance MA, Launer LJ, Farrer LA, van Duijn CM, Van Broeckhoven C, Moskvina V, Seshadri S, Williams J, Schellenberg GD and Amouyel P (2013) Meta-analysis of 74 046 individuals identifies 11 new susceptibility loci for Alzheimer's disease. *Nature Genetics* **45**, 1452–1458.
- Larsson SC, Traylor M, Malik R, Dichgans M and Burgess S (2017). Modifiable pathways in Alzheimer's disease: Mendelian randomisation analysis. *British Medical Journal* **359**, j5375.
- Livingston G, Sommerlad A, Orgeta V, Costafreda SG, Huntley J, Ames D, Ballard C, Banerjee S, Burns A, Cohen-mansfield J, Cooper C, Fox N, Gitlin LN, Howard R, Kales HC, Larson EB, Ritchie K, Rockwood K, Sampson EL, Samus Q, Schneider LS, Selbæk G, Teri L and Mukadam N (2017) The Lancet Commissions: dementia prevention, intervention, and care. *The Lancet* **390**, 2673–2674.
- Moran C, Beare R, Phan TG, Bruce DG, Callisay ML and Srikanth V, On behalf of the Alzheimer's Disease Neuroimaging Initiative (ADNI) (2015) Type 2 diabetes mellitus and biomarkers of neurodegeneration. *Neurology* **85**, 1123–1130.
- Naghavi M, Abajobir AA, Abbafati C, Abbas KM, Abd-Allah F, Abera SF, Aboyans V, Adetokunboh O, Ärnlöv J, Afshin A, Agrawal A, Kiyaliri AA, Ahmadi A, Ahmed MB, Aichour AN, Aichour I, Aichour MTE, Aiyar S, Al-Eyadhy A, Alahdab F, Al-Aly Z, Alam K, Alam N, Alam T, Alene KA, Ali SD, Alizadeh-Navaei R, Alkaabi JM, Alkerwi A, Alla F, Allebeck P, Allen C, Al-Raddadi R, Alsharif U, Altirkawi KA, Alvis-Guzman N, Amare AT, Amini E, Ammar W, Amoako YA, Amber N, Andersen HH, Andrei CL, Androudi S, Ansari H, Antonio CAT, Anwari P, Arora M, Artaman A, Aryal KK, Asayesh H, Asgedom SW, Atey TM, Avila-Burgos L, Avokpaho EFGA, Awasthi A, Quintanilla BPA, Béjot Y, Babalola TK, Bacha U, Balakrishnan K, Barac A, Barboza MA, Barker-Collo SL, Barquera S, Barregard L, Barrero LH, Baune BT, Bedi N, Beghi E, Bekele BB, Bell ML, Bennett JR, Bensenor IM, Berhane A, Bernabé E, Betsu BD, Beuran M, Bhatt S, Biadgilign S, Bienhof K, Bikbov B, Bisanzio D, Bourne RRA, Breitborde NJK, Bulto LNB, Bumgarner BR, Butt ZA, Cárdenas R, Cahuana-Hurtado L, Cameron E, Campuzano JC, Car J, Carrero JJ, Carter A, Casey DC, Castañeda-Orjuela CA, Catalá-López F, Charlson FJ, Chibueze CE, Chimed-Ochir O, Chisumpa VH, Chitther AA, Christopher DJ, Ciobanu LG, Cirillo M, Cohen AJ, Colombara D, Cooper C, Cowie BC, Criqui MH, Dandona L, Dandona R, Dargan PI, Das Neves J, Davitoiu D V., Davletov K, De Courten B, Degenhardt L, Deiparine S, Deribe K, Deribew A, Dey S, Dicker D, Ding EL, Djalalinia S, Do HP, Doku DT, Douwes-Schultz D, Driscoll TR, Dubey M, Duncan BB, Echno M, El-Khatib ZZ, Ellingsen CL, Enayati A, Erskine HE, Eskandarieh S, Esteghamati A, Ermakov SP, Estep K, Sa Farinha CS, Faro A, Farzadfar F, Feigin VL, Fereshtehnejad SM, Fernandes JC, Ferrari AJ, Feyissa TR, Filip I, Finegold S, Fischer F, Fitzmaurice C, Flaxman AD, Foigt N, Frank T, Fraser M, Fullman N, Fürst T, Furtado JM, Gakidou E, Garcia-Basteiro AL, Gebre T, Gebregergs GB, Gebrehiwot TT, Gebremichael DY, Geleijnse JM, Genova-Maleras R, Gesesew HA, Gething PW, Gillum RF, Ginawi IAM, Giref AZ, Giroud M, Giussani G, Godwin WW, Gold AL, Goldberg EM, Gona PN, Gopalani SV, Gouda HN, Goulart AC, Griswold M, Gupta PC, Gupta R, Gupta T, Gupta V, Haagsma JA, Hafezi-Nejad N, Hailu AD, Hailu GB, Hamadeh RR, Hambisa MT, Hamidi S, Hammami M, Hancock J, Handal AJ, Hankey GJ, Hao Y, Harb HL, Hareri HA, Hassanvand MS, Havmoeller R, Hay SI, He F, Hedayati MT, Henry NJ, Heredia-Pi IB,

- Herteliu C, Hoek HW, Horino M, Horita N, Hosgood HD, Hostiuc S, Hotez PJ, Hoy DG, Huynh C, Iburg KM, Ikeda C, Ileanu BV, Irenso AA, Irvine CMS, Jürisson M, Jacobsen KH, Jahanmehr N, Jakovljevic MB, Javanbakht M, Jayaraman SP, Jeemon P, Jha V, John D, Johnson CO, Johnson SC, Jonas JB, Kabir Z, Kadel R, Kahsay A, Kamal R, Karch A, Karimi SM, Karimkhani C, Kasaeian A, Kassaw NA, Kassebaum NJ, Katikireddi SV, Kawakami N, Keiyoro PN, Kemmer L, Kesavachandran CN, Khader YS, Khan EA, Khang YH, Khoja ATA, Khosravi A, Khosravi MH, Khubchandani J, Kieling C, Kievlan D, Kim D, Kim YJ, Kimokoti RW, Kinfu Y, Kissoon N, Kivimaki M, Knudsen AK, Kopec JA, Kosen S, Koul PA, Koyanagi A, Defo BK, Kulikof XR, Kumar GA, Kumar P, Kutz M, Kyu HH, Lal DK, Laloo R, Lambert TLN, Lan Q, Lansingh VC, Larsson A, Lee PH, Leigh J, Leung J, Levi M, Li Y, Kappe DL, Liang X, Liben ML, Lim SS, Liu A, Liu PY, Liu Y, Lodha R, Logroscino G, Lorkowski S, Lotufo PA, Lozano R, Lucas TCD, Ma S, Macarayan ERK, Maddison ER, Abd El Razeq MM, Majdan M, Majdzadeh R, Majeed A, Malekzadeh R, Malhotra R, Malta DC, Manguerra H, Manyazewal T, Mapoma CC, Marczak LB, Markos D, Martinez-Raga J, Martins-Melo FR, Martopullo I, McAlinden C, McGaughey M, McGrath JJ, Mehata S, Meier T, Meles KG, Memiah P, Memish ZA, Mengesha MM, Mengistu DT, Menota BG, Mensah GA, Meretoja A, Meretoja TJ, Milliar A, Miller TR, Minig S, Mirarefn M, Mirrahimov EM, Misganaw A, Mishra SR, Mohammad KA, Mohammadi A, Mohammed S, Mokdad AH, Mola GLD, Mollenkopf SK, Molokhia M, Monasta L, Hernandez JCM, Montico M, Mooney MD, Moradi-Lakeh M, Moraga P, Morawska L, Morrison SD, Morozof C, Mountjoy-Venning C, Mruts KB, Muller K, Murthy GVS, Musa KI, Nachega JB, Naheed A, Naldi L, Nangia J, Nascimento BR, Nasher JT, Natarajan G, Negoi I, Ngunjiri JW, Nguyen CT, Nguyen G, Nguyen M, Nguyen Q Le, Nguyen TH, Nichols E, Ningrum DNA, Nong VM, Noubiap JN, Ogbo FA, Oh IH, Okoro A, Olagunju AT, Olsen HE, Olusanya BO, Olusanya JO, Ong K, Opio JN, Oren E, Ortiz A, Osman M, Ota E, Mahesh PA, Pacella RE, Pakhale S, Pana A, Panda BK, Jonas S, Papachristou C, Park EK, Patten SB, Patton GC, Paudel D, Paulson K, Pereira DM, Perez-Ruiz F, Perico N, Pervaiz A, Petzold M, Phillips MR, Pigott DM, Pinho C, Plass D, Pletcher MA, Polinder S, Postma MJ, Pourmalek F, Purcell C, Qorbani M, Radfar A, Rafay A, Rahimi-Movaghar V, Rahman M, Ur Rahman MH, Rai RK, Ranabhat CL, Rankin Z, Rao PC, Rath GK, Rawaf S, Ray SE, Rehm J, Reiner RC, Reitsma MB, Remuzzi G, Rezaei S, Rezaei MS, Rokni MB, Ronfani L, Roshandel G, Roth GA, Rothenbacher D, Ruhago GM, Rizwan SA, Saadat S, Sachdev PS, Sadat N, Safdarian M, Saf S, Safri S, Sagar R, Sahathevan R, Salama J, Salamati P, Salomon JA, Samy AM, Sanabria JR, Sanchez-Niño MD, Santomauro D, Santos IS, Milicevic MMS, Sartorius B, Satpathy M, Shahrzad S, Schmidt MI, Schneider IJC, Schulhofer-Wohl S, Schutte AE, Schwebel DC, Schwendicke F, Sepanlou SG, Servan-Mori EE, Shackelford KA, Shaikh MA, Shamsipour M, Shamsizadeh M, Islam SMS, Sharma J, Sharma R, She J, Sheikhbahaei S, Shey M, Shi P, Shields C, Shigematsu M, Shiri R, Shirude S, Shiue I, Shoman H, Shrimel MG, Sigfusdottir ID, Silpakit N, Silva JP, Singh A, Singh JA, Skiadaresi E, Sligar A, Smith A, Smith DL, Smith M, Sobaih BHA, Soneji S, Sorensen RJD, Soriano JB, Sreeramareddy CT, Srinivasan V, Stanaway JD, Stathopoulou V, Steel N, Stein DJ, Steiner C, Steinke S, Stokes MA, Strong M, Strub B, Subart M, Sufyan MB, Sunguya BF, Sur PJ, Swaminathan S, Sykes BL, Tabarés-Seisdedos R, Tadakamadla SK, Takahashi K, Takala JS, Talongwa RT, Tarawneh MR, Tavakkoli M, Taveira N, Tegegne TK, Tehrani-Banihashemi A, Tensah MH, Terkawi AS, Thakur JS, Thamsuwan O, Thankappan KR, Thomas KE, Thompson AH, Thomson AJ, Thrift AG, Tobe-Gai R, Topor-Madry R, Torre A, Tortajada M, Towbin JA, Tran BX, Troeger C, Truelsen T, Tsoi D, Tuzcu EM, Tyrovolas S, Ukwaja KN, Undurraga EA, Updike R, Uthman OA, Uzochukwu BSC, Van Boven JFM, Vasankari T, Venketasubramanian N, Violante FS, Vlassov VV, Vollset SE, Vos T, Wakayo T, Wallin MT, Wang YP, Weiderpass E, Weintraub RG, Weiss DJ, Werdecker A, Westerman R, Whetter B, Whiteford HA, Wijeratne T, Wiysonge CS, Woldeyes BG, Wolfe CDA, Woodbrook R, Workicho A, Xavier D, Xiao Q, Xu G, Yaghoubi M, Yakob B, Yano Y, Yaseri M, Yimam HH, Yonemoto N, Yoon SJ, Yotebieng M, Younis MZ, Zaidi Z, El Sayed Zaki M, Zegeye EA, Zenebe ZM, Zerfu TA, Zhang AL, Zhang X, Zipkin B, Zodpey S, Lopez AD and Murray CJL (2017) Global, regional, and national age-sex specific mortality for 264 causes of death, 1980–2016: a systematic analysis for the Global Burden of Disease Study 2016. *The Lancet* **390**, 1151–1210.
- Oestergaard SD, Mukherjee S, Sharp SJ, Proitsi P, Lotta LA, Day F, Perry JRB, Boehme KL, Walter S, Kauwe S, Gibbons LE, Genetics D, Gerard T, Consortium E, Larson EB and Powell JF (2015) Associations between potentially modifiable risk factors and Alzheimer disease: a Mendelian randomization study. *PLoS Medicine* **12**, e1001841.
- Panagiotou OA, Ioannidis JPA, Hirschhorn JN, Abecasis GR, Frayling TM, McCarthy MI, Lindgren CM, Beaty TH, Eriksson N, Polychronakos C, Kathirensan S, Plenge RM, Spritz R, Payami H, Martin ER, Vance J, Su WH, Chang YS, Bei JX, Zeng YX, Paré G, Faraone S V., Neale B, Anney RJ, Traynor BJ, Scherag A, Hebebrand J, Hinney A, Froguel P, Meyre D, Chanock SJ and Kesheng W (2012) What should the genome-wide significance threshold be? Empirical replication of borderline genetic associations. *International Journal of Epidemiology* **41**, 273–286.
- Pedersen CB, Gotzsche H, Møller JO and Mortensen PB (2006) The Danish Civil Registration System: a cohort of eight million persons. *Danish Medical Bulletin* **53**, 441–449.
- Phung T, Andersen B, Høgh P, Kessing L, Mortensen P and Waldemar G (2011) Validity of dementia diagnoses in the Danish hospital registers. *Dementia and Geriatric Cognitive Disorders* **7**, 220–228.
- Price M, Albanese E, Guerchet M and Prina M (2014) World Alzheimer report 2014, Dementia and risk reduction. *Alzheimer's Disease International*, London.
- Pruzin JJ, Nelson PT, Abner EL and Arvanitakis Z (2018), Review: relationship of type 2 diabetes to human brain pathology. *Neuropathology and Applied Neurobiology* **44**, 347–362.
- Rasmussen KL (2016). *Plasma levels of apolipoprotein E and risk of dementia and ischemic heart disease in the general population* (PhD thesis). Faculty of Health and Medical Sciences, University of Copenhagen.
- Scott RA, Scott LJ, Mägi R, Marullo L, Gaulton KJ, Kaakinen M, Pervjakova N, Pers TH, Johnson AD, Eicher JD, Jackson AU, Ferreira T, Lee Y, Ma C, Steinthorsdottir V, Thorleifsson G, Qi L, Van Zuydam NR, Mahajan A, Chen H, Almgren P, Voight BF, Grallert H, Müller-Nurasyid M, Ried JS, Rayner NW, Robertson N, Karssen LC, van Leeuwen EM, Willems SM, Fuchsberger C, Kwan P, Teslovich TM, Chanda P, Li M, Lu Y, Dina C, Thuillier D, Yengo L, Jiang L, Sparso T, Kestler HA, Chheda H, Eisele L, Gustafsson S, Fränberg M, Strawbridge RJ, Benediktsson R, Hreidarsson AB, Kong A, Sigurðsson G, Kerrison ND, Luan J, Liang L, Meitinger T, Roden M, Thorand B, Esko T, Mihailov E, Fox C, Liu CT, Rybin D, Isomaa B, Lyssenko V, Tuomi T, Couper DJ, Pankow JS, Grarup N, Have CT, Jørgensen ME, Jørgensen T, Linneberg A, Cornelis MC, van Dam RM, Hunter DJ, Kraft P, Sun Q, Edkins S, Owen KR, Perry JRB, Wood AR, Zeggini E, Tajer-Fernandes J, Abecasis GR, Bonnycastle LL, Chines PS, Stringham HM, Koistinen HA, Kinnunen L, Sennblad B, Mühleisen TW, Nöthen MM, Pechlivanis S, Baldassarre D, Gertow K, Humphries SE, Tremoli E, Klopp N, Meyer J, Steinbach G, Wrennauer R, Eriksson JG, Männistö S, Peltonen L, Tikkanen E, Charpentier G, Eury E, Lobbens S, Gigante B, Leander K, McLeod O, Bottinger EP, Gottesman O, Ruderfer D, Blüher M, Kovacs P, Tonjes A, Maruthur NM, Scapoli C, Erbel R, Jöckel KH, Moebus S, de Faire U, Hamsten A, Stumvoll M, Deloukas P, Donnelly PJ, Frayling TM, Hattersley AT, Ripatti S, Salomaa V, Pedersen NL, Boehm BO, Bergman RN, Collins FS, Mohlke KL, Tuomilehto J, Hansen T, Pedersen O, Barroso I, Lannfelt L, Ingelsson E, Lind L, Lindgren CM, Cauchi S, Froguel P, Loos RJE, Balkau B, Boeing H, Franks PW, Barricarte Gurra A, Palli D, van der Schouw YT, Altschuler D, Groop LC, Langenberg C, Wareham NJ, Sijbrands E, van Duijn CM, Florez JC, Meigs JB, Boerwinkle E, Gieger C, Strauch K, Metspalu A, Morris AD, Palmer CNA, Hu FB, Thorsteinsdottir U, Stefansson K, Dupuis J, Morris AP,

- Boehnke M, McCarthy MI and Prokopenko I** (2017) An expanded genome-wide association study of type 2 diabetes in Europeans. *Diabetes* **66**, 2888–2902.
- Smith GD and Ebrahim S** (2003) ‘Mendelian randomization’: can genetic epidemiology contribute to understanding environmental determinants of disease? *International Journal of Epidemiology* **32**, 1–22.
- Smith GD, Ebrahim S, Lewis S, Hansell AL, Palmer LJ and Burton PR** (2005) Genetic epidemiology and public health: hope, hype, and future prospects. *The Lancet* **366**, 1484–1498.
- Spiller W, Davies NM and Palmer TM** (2019) Software application profile: mrrobust – a tool for performing two-sample summary Mendelian randomization analyses. *International Journal of Epidemiology* **48**, 684–690.
- Sutherland GT, Lim J, Srikanth V and Bruce DG** (2017), Epidemiological approaches to understanding the link between type 2 diabetes and dementia. *Journal of Alzheimer’s Disease* **59**, 393–403.
- World Health Organization** (2016). Global report on diabetes. ISBN 978 92 4 156525 7.