



Evaluation of the Hydraulic Conductivity of Geosynthetic Clay Liners

Juan Hou · Yuyang Teng · Shifen Bao · Hao Li · Lei Liu

Accepted: 11 December 2021
© The Clay Minerals Society 2022

Abstract The hydraulic conductivity of geosynthetic clay liners (GCLs) is not fully understood and certain gaps in knowledge are still present, such as the effect of coupled mechanical and chemical processes. The current study aimed to develop a simplified mathematical model to predict the hydraulic conductivity of GCLs, particularly regarding the coupled effects of mechanical and chemical processes. Based on Darcy's Law and Poiseuille's Law, the method combines

diffuse double layer (DDL) theory and fractal theory. External factors such as confining pressure and the concentration of the permeating solution, and inherent properties such as exchangeable cations, ionic radius, montmorillonite surface fractal dimension, the distance between two montmorillonite layers (m) after swelling at the exchangeable cation i (i denotes the primary exchangeable cations, such as Na^+ , Ca^{2+} , K^+ , and Mg^{2+} in bentonite), density, and coefficient of viscosity of interlayer water between two montmorillonite layers, were considered. The proposed theoretical model gave relatively accurate predictions. A practical estimate of GCL hydraulic conductivity was also derived. The predictions were compared with experimental results and good qualitative agreement was found. From the experimental results, the proposed prediction model has a maximum deviation of $\sim 1:10$ – $10:1$, and the empirical model has a mean deviation of $\sim 1:15$ – $15:1$.

Supplementary Information The online version contains supplementary material available at <https://doi.org/10.1007/s42860-021-00167-0>.

J. Hou (✉) · L. Liu
State Key Laboratory of Geomechanics and Geotechnical Engineering, Institute of Rock and Soil Mechanics, Chinese Academy of Sciences, Wuhan 430071, China
e-mail: juanhou@staff.shu.edu.cn

J. Hou · Y. Teng · S. Bao · H. Li
School of Mechanics and Engineering Science, Shanghai University, Shanghai 200444, China

J. Hou
School of Engineering, University of Virginia, Charlottesville, VA 22904, USA

L. Liu
IRSM-CAS/HK PolyU Joint Laboratory on Solid Waste Science, Wuhan 430071, China

L. Liu
Hubei Province Key Laboratory of Contaminated Sludge & Soil Science and Engineering, Wuhan 430071, China

Keywords Geosynthetic clay liners · Hydraulic conductivity · Mechanical leachate · Theoretical model

Introduction

In recent years, geosynthetic clay liners (GCLs) have received much attention as barrier systems in municipal solid-waste landfill applications because of their good physical and chemical properties,

ability to self-repair, easy processing, and environmental endurance. Extensive experimental studies have investigated the hydraulic conductivity of GCLs (Abuel-Naga et al., 2013; Bouazza, 2002; Bouazza et al., 2006; Giroud et al., 1997; Liu et al., 2014; Rouf et al., 2016; Rowe, 1998; Xue et al., 2012). Numerous investigators have focused on the factors influencing GCL hydraulic conductivity through compatibility tests (Jo et al., 2001; Vasko et al., 2001; Jo et al., 2005; Fox and Ross, 2011; Benson, 2013; Shen et al., 2015). Considering actual field conditions, the coupling effect of the overlying load pressure and the leachate on the hydraulic conductivity of GCLs has been addressed recently (Shackelford et al., 2010; Kang & Shackelford, 2011; Zhu et al., 2015; Malusis et al., 2015; Chen et al., 2016; Scalia et al., 2018; Wang et al., 2019a, b). Naka et al. (2016) presented a state-of-the-art review of the factors impacting the hydraulic conductivity of GCLs, concluding that bentonite type, prehydration, confining pressure, pH, metal concentration, and metal ion type are the strongest influences. Numerical simulations and theoretical models, which have made possible the measurement of hydraulic conductivity of GCLs from information about the porous media structure, are powerful alternatives in predicting this physical parameter (Dexter & Richard, 2009; Guan et al., 2014; Nakano & Miyazaki, 2005; Quinton et al., 2009; Schaap & Leij, 1998; Xie et al., 2018).

Compared to the extensive experimental studies, however, numerical simulations have been relatively few (Bolt, 1956; Bouazza et al., 2013, 2014; Saidi et al., 2006; Siemens et al., 2012; Stepniewski et al., 2011). Theories based on case studies remain quite rare (Benson et al., 2018; Kolstad et al., 2004, 2006; Siddiqua et al., 2011; Yan et al., 2020). Chai and Shen (2018) used diffuse double layer (DDL) theory to analyze the swelling behavior of a Na^+ bentonite used in GCLs with lower dry unit weights and found linear relationships between the calculated double layer thickness and the measured corresponding free swelling index and liquid limit. Dominijanni et al. (2012, 2018) proposed a physical approach to interpreting the phenomenological parameters obtained from laboratory tests. Michels et al. (2019) inferred mesoporous humidity from a space-resolved measurement with a fractal diffusion equation and showed that water transport through a system of clay minerals could

be hysteretic. However, they suggested that sample preparation history in Na bentonite has little effect on the water vapor transport through the mesopores. Using the study of Chung and Daniel (2008), Liu et al. (2018) calculated the hydraulic conductivity of GCLs using DDL theory. However, Sposito (1984) stated that the DDL theory cannot predict the dissolved divalent cations accurately, especially in the initial stages of swelling, as was verified by Schanz and Tripathy (2009). Meanwhile, the fractal model is characterized mainly by the fractal dimension, which is affected by the physical properties of porous media. Some studies showed that the fractal theory can be used to determine the swelling properties of bentonite (Boadu, 2000; Thevanayagam & Nesarajah, 1998), especially in the initial swelling stage. Peng et al. (2020) employed small-angle X-ray scattering (SAXS) and liquid nitrogen adsorption (Frenkel-Halsey-Hill (FHH) and Neimark thermodynamic method) to determine the fractal dimension of four Chinese bentonites. The swelling strain and the clay particle thickness changed non-linearly as a function of water content and cation type (Altoé et al., 2016; Michels et al., 2020). Further studies have extended fractal theory in studying bentonite (Li & Xu, 2019; Xiang et al., 2019; Xu et al., 2003, 2004).

The overall objective of the current study was to present a theoretical mathematical equation for calculating the hydraulic conductivity of GCLs, particularly regarding the coupled effect of mechanical and chemical processes. The DDL theory and a new fractal model of montmorillonite were combined. Also investigated was the influence on the hydraulic conductivity of GCLs of confining pressure, the concentration of permeate salt solutions, exchangeable cations, bentonite ionic radius, the surface fractal dimension of montmorillonite, and the distance, density, and coefficient of viscosity of interlayer water between two montmorillonite layers. The flow chart showing how the theoretical model is developed is shown in Fig. 1.

As shown in the flow chart (Fig. 1), from a macro view, the hydraulic conductivity of GCLs can be calculated using Poiseuille's Law and Darcy's Law. From the micro view, the hydraulic conductivity of GCLs can be calculated using the capillary rise concept of clay swelling and fractal dimensions. Combining the micro and macro views, a theoretical

model for predicting the hydraulic conductivity of GCL is developed. The effect of confining pressure, the concentration of the permeating solution, the exchangeable cations, the ionic radii of cations, the montmorillonite surface fractal dimension, and the distance between two montmorillonite layers (m) after swelling are considered in this theoretical model.

A Theoretical Model of GCL Hydraulic Conductivity

GCLs consist generally of bentonite sandwiched between two geotextile layers that are needed or sewn together to provide shear strength. Bentonite materials, the most important components of the GCLs, are characterized by potentials for high water retention and swelling (Rowe, 2014). For the bentonite material, Komine (2005) assumed that water goes mainly through two montmorillonite layers swollen by adsorbed water, based on their experimental work (Komine & Ogata, 1996, 2003, 2004; Komine, 2004a, b). Therefore, according to the plane Poiseuille flow equation, the maximum velocity, v_{\max} , can be expressed as:

$$v_{\max} = -\frac{(2s_i)^2}{8\mu_{wi}} \frac{dp}{dx} = -\frac{\rho g(2s_i)^2}{8\mu_{wi}} \frac{dh}{dx} = -\frac{r_p(2s_i)^2}{8\mu_{wi}} \frac{dh}{dx} \quad (1)$$

where s_i is the half distance between two montmorillonite layers (m) after swelling at the exchangeable cation i (i denotes the primary exchangeable cations, such as Na^+ , Ca^{2+} , K^+ , and Mg^{2+} in bentonite) (Komine & Ogata, 2003), μ_{wi} is the coefficient of viscosity of interlayer water between two montmorillonite parallel layers (Pa·s), p is hydraulic pressure, x is the coordinate along the flow, $\frac{dp}{dx}$ is differentiation of p with x , ρ is solution density, g is gravitational acceleration, $\frac{dh}{dx}$ is the hydraulic gradient, and r_p is the density of interlayer fluid between two montmorillonite parallel-plate layers (Pa/m).

The average velocity v then can be expressed as (Komine & Ogata, 2003):

$$v = \frac{2}{3}v_{\max} = -\frac{2}{3} \times \frac{r_p(2s_i)^2}{8\mu_{wi}} \frac{dh}{dx} = -\frac{r_p(2s_i)^2}{12\mu_{wi}} \frac{dh}{dx} \quad (2)$$

Using Darcy's law for flow through a porous medium, the average velocity can be expressed as follows:

$$v = -k \frac{dh}{dx} \quad (3)$$

where k is the hydraulic conductivity of GCLs (m/s).

By simultaneous solution of Eqs. 2 and 3, the hydraulic conductivity (m/s) of two montmorillonite parallel layers at the exchangeable-cation i , k_i can be expressed as:

$$k_i = \frac{r_p}{12\mu_{wi}} (2s_i)^2 = \frac{r_p}{3\mu_{wi}} s_i^2 \quad (4)$$

Moreover, for a given bentonite, μ_{wi} and r_p are constant. Therefore, k_i depends only on s_i .

Komine & Ogata (2003, 2004) proposed the parameter "swelling volumetric strain of montmorillonite ε_{sv} ." The ε_{sv} is the percentage volume increase of swelling deformation of montmorillonite. This parameter is defined by:

$$\varepsilon_{sv} = \frac{V_v + V_{sw}}{V_m} \times 100(\%) \quad (5)$$

where V_m is the volume of montmorillonite in the buffer material, V_v is the volume of voids in the buffer material, and V_{sw} is the maximum swelling deformation of the buffer material at constant vertical pressure ($V_{sw} \geq 0$).

Meanwhile, from the viewpoint of the behavior of montmorillonite, ε_{sv} can also be expressed as (Komine & Ogata, 2003, 2004):

$$\varepsilon_{sv} = \frac{H_1 - H_0}{H_0} = \frac{d - R_{ion}}{t + R_{ion}} \times 100\% \quad (6)$$

where t is the thickness of the montmorillonite layer (m) and R_{ion} is the ionic radius.

In addition, an equation that accommodates the influences of the exchangeable-cation composition of bentonite by parameters giving the numbers of Na^+ , K^+ , Ca^{2+} , Mg^{2+} , and the radius of exchangeable cations after montmorillonite swelling can be obtained as:

$$s_i = \varepsilon_{sv} [t + (R_{ion})_i] + (R_{ion})_i \quad (7)$$

where $(R_{ion})_i$ is the ionic radius of the exchangeable-cation i .

Evidence of self-similar microstructures were found in bentonite (Mandelbrot, 1982; Pusch & Yong, 2003; Pusch, 1999). Xu et al. (2014a, b) analyzed the deformation and fractal behavior of bentonite by relating the elastic and fracture behaviors as proposed in the following model:

$$\varepsilon_{sv} = \frac{V_w}{V_m} = K\sigma_c^{D_s-3} \quad (8)$$

where V_w is the water volume adsorbed by montmorillonite and V_m is the volume of montmorillonite (Xu et al., 2004). K is the montmorillonite expansion coefficient, σ_c is swelling stress, and D_s is the surface fractal dimension of montmorillonite in bentonite.

The montmorillonite fraction in bentonite can be measured using XRD. Meanwhile, in the GCL permeation tests, the bentonite is completely saturated at a constant confining pressure (ASTM D6766). This indicates that a relationship exists between the structure of a montmorillonite mineral after swelling (d , t , and R_{ion} , etc.) and a confining pressure (σ_c). Therefore, from the combined Eqs. 4, 7, and 8, the hydraulic conductivity of GCLs can be expressed by the structure of a montmorillonite mineral after swelling and the confining pressure as follows:

$$k_i = \frac{r_p}{3\mu_{wi}} \times \{K \times \sigma_c^{D_s-3} \times [t + (R_{ion})_i] + (R_{ion})_i\}^2 \quad (9)$$

Among these, K can be estimated as follows (Xu et al., 2003):

$$K = \frac{(D_s - 2)CF(2\tau\cos\alpha)^{2-D_s}}{V_m} \quad (10)$$

where C is the Hausdorff measurement of the fractal surface (Pfeifer & Schmidt, 1988), F is the free energy of the chemical solution, τ is the surface tension, and α is the contact angle of the adsorbed liquid with the material.

Some researchers have introduced 0.1 mol/L as the threshold to distinguish the stronger from the weaker solutions (Vasko et al., 2001; Jo et al., 2005). Xu et al. (2014a, b) found that K varies with the concentration of the permeating solution due to the limitations of the bilayer model. The present theoretical models, therefore, will be represented by dividing the chemical salt solution concentration into two zones:

$$k_{pre} = \begin{cases} k_a, C = 0 - 0.1 \text{ mol/L} \\ k_b, C > 0.1 \text{ mol/L} \end{cases} \quad (11)$$

where k_{pre} (m/s) is the hydraulic conductivity of GCL in the theoretical models; k_a (m/s) is the hydraulic conductivity of GCL when the solution concentration is 0–0.1 mol/L; k_b (m/s) is the hydraulic conductivity of GCL when the solution concentration is >0.1 mol/L.

Based on the theory of Frenkel-Halsey-Hill (FHH), D_s can be given by (Avnir & Jaroniec, 1989; Neimark, 1990; Yin, 1991):

$$D_s = 3 + \frac{\ln V_{ads} - B}{\ln(\ln \frac{P_0}{P})} \quad (12)$$

where V_{ads} is the gas volume adsorbed at equilibrium pressure (cm^2/g), B is an FHH constant, P_0 is the saturation pressure of the adsorbate, and P is the nitrogen partial pressure.

Rao and Thyagaraj (2007) investigated the effect of the inflow of sodium chloride solutions on the swell compression behavior of compacted expansive clays under a range of external loads. The ratio of total vertical stress to swell stress determined the nature of strains experienced by the compacted clay specimens subjected to direct inundation with salt solutions. Therefore,

$$\sigma_c = \sigma_v + \sigma_{\Pi} \quad (13)$$

where σ_c is the total net vertical stress (Rao & Thyagaraj, 2007), σ_v is vertical confining stress, and σ_{Π} is osmotic stress.

Using partition theory, Xu et al. (2014a, b) proposed that σ_{Π} can be written as

$$\sigma_{\Pi} = \Pi \left(\frac{\sigma_v}{\Pi} \right)^{D_s-2} \quad (14)$$

where Π is osmotic suction and can be calculated through the Van't Hoff equation as (Colin et al., 1985; Lang, 1967)

$$\Pi = Ac\xi RT \quad (15)$$

where A is the Van't Hoff coefficient, c the concentration of salt solutions, ξ the cation valence, R the universal gas constant, and T the absolute temperature.

Substituting Eqs. 13 and 14 into 9 yields:

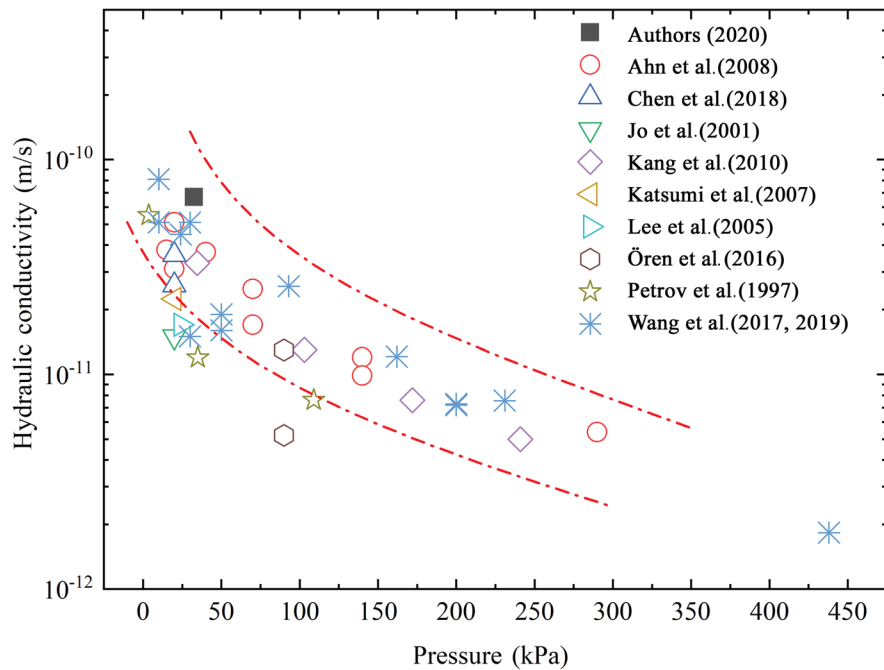


Fig. 2 The experimental hydraulic conductivity of GCLs under different pressures

$$k_i = \frac{r_p}{3\mu_{wi}} \times \{K \times [\sigma_v + \Pi \left(\frac{\sigma_v}{\Pi}\right)^{D_s-2}]\}^{D_s-3} \times [t + (R_{ion})_i] + (R_{ion})_i \quad (16)$$

From Eq. 9, when the confining pressure (p) increases, the hydraulic conductivity decreases. This is consistent with many experimental studies (Benson et al., 2018; Kang & Shackelford, 2011; Malusis et al., 2015; Shackelford et al., 2010; Zhu et al., 2015) as shown in Fig. 2. Shackelford et al. (2010) explained that the average confining pressure leads to a reduction in the void ratio, which results in a reduction of the hydraulic conductivity. In addition, from Eqs. 15 and 16, the increase in solution concentration will lead to an increase in Π and then, accordingly, an increase in the hydraulic conductivity. This is consistent with the experimental study of Jadda and Bag (2020), who found, using SEM, that the solution leads to the limitation of the bentonite swelling and results in the large pore size (comparing Fig. 3a through c in the red boxes), which increases the hydraulic conductivity.

Considering the main exchangeable cations (Na^+ , Ca^{2+} , K^+ , and Mg^{2+}) in bentonite, the hydraulic conductivity of bentonite, k_{pb} , can be approximated by

$$k_{pb} = \frac{1}{CEC} \sum_{\substack{i = \text{Na}^+, \text{Ca}^{2+} \\ \text{K}^+, \text{Mg}^{2+}}} [EXC_i k_i] \quad (17)$$

where CEC is the bentonite cation exchange capacity (meq/g) and EXC_i is the CEC (meq/g) with respect to the i^{th} ion

Introducing the montmorillonite fraction in bentonite, C_m , the hydraulic conductivity of GCLs, k_{pre} , can be written as:

$$k_{pre} = C_m \times k_{pb} \quad (18)$$

Considerable research has shown that the hydraulic conductivity of GCLs increased in the stronger solutions (Petrov & Rowe, 1997; Jo et al., 2001; Lee et al., 2005; Scalia & Benson, 2011; Xu et al., 2014a, b). Other studies (Mesri & Olson, 1970; Yong & Mohamed, 1992; Egloffstein, 2001) reported a positive ratio between the hydraulic conductivity of GCLs and the square root of cationic concentration. Therefore, the hydraulic conductivity at 0.1 mol/L is being used to represent the hydraulic conductivity at concentrations > 0.1 mol/L. The following equation for predicting

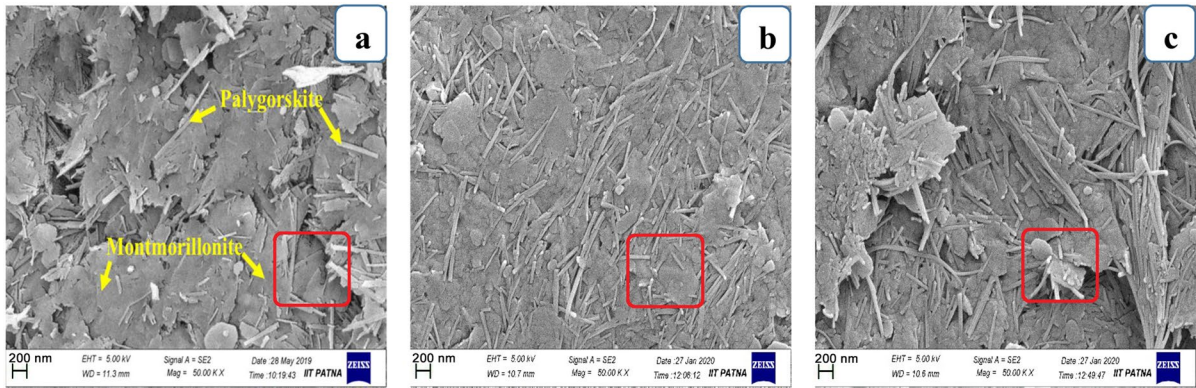


Fig. 3 Scanning Electron Microscope images of the bentonites: (a) Divalent bentonite powder sample, (b) Divalent bentonite in DI water, (c) Divalent bentonite in 1.0 mol/L NaCl (Jadda and Bag, 2011)

the hydraulic conductivity of GCL in the stronger solutions (>0.1 mol/L, Bouazza et al., 2006) can be derived:

$$k_{pre} = \sqrt{\frac{c}{0.1}} \times (k_{pre})_{0.1} \tag{19}$$

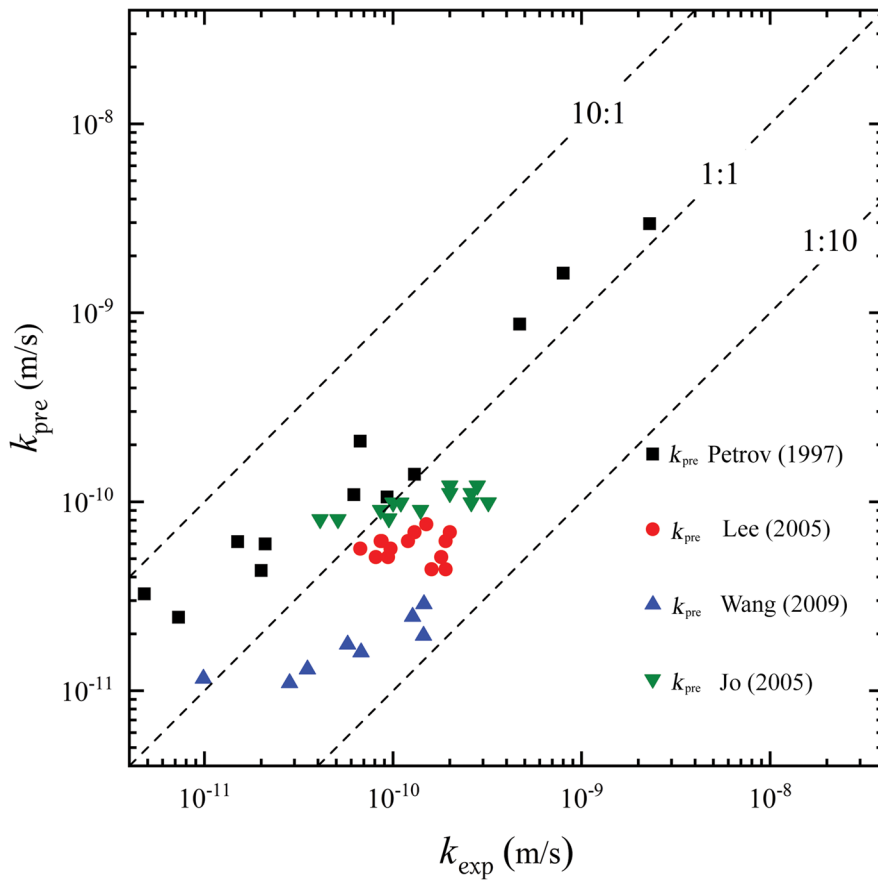


Fig. 4 Hydraulic conductivities of GCL: predicted model (k_{pre}) versus experimental data (k_{exp})

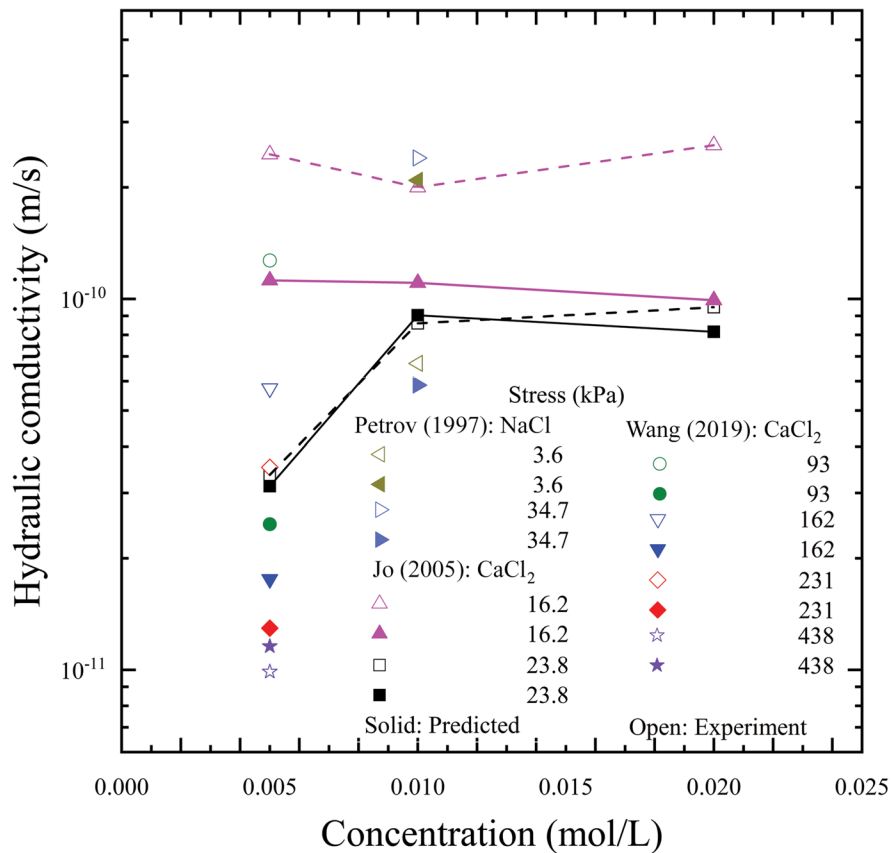


Fig. 5 Hydraulic conductivities in weak and medium solutions

Verification of the Analytical Model

To validate this theoretical model of GCL permeability coefficients, the theoretical values obtained from Eqs. 18 and 19 were verified by the experimental results of Petrov and Rowe (1997), Jo et al. (2005), Lee et al. (2005), and Wang et al. (2019a, b, c). All the parameters used in the formula are the same as those in the experiments. An example calculation is presented in Appendix I. The comparisons for different cases are summarized in Figs. 4, 5 and 6. In Fig. 4, the experimental data are represented by the x-axis and the predict data are represented by the y-axis. This 'One to one' graph is common to illustrate the deviation of the hydraulic conductivities of GCL (Benson et al., 2018; Chen et al., 2019; Li et al., 2020). The dashed line indicates the specific deviation of hydraulic conductivities of GCL (e.g. 1:1, 2:1, 1:2). The closer to the 1:1 dash line, the smaller is the deviation of the hydraulic conductivity of

GCLs. The deviation of the hydraulic conductivity of GCLs in the logarithmic coordinate system is generally between 1:10 and 10:1 (Shackelford et al., 2010; Wang et al., 2019a, b, c). It is one order of magnitude deviation, which is a conventional deviation in illustrating the hydraulic conductivity of GCL.

An Empirical Model of GCL Hydraulic Conductivity

Kolstad et al. (2004, 2006) proposed a relatively simple empirical model that can be used to estimate the hydraulic conductivity of GCLs based on experimental data. It is a function of ionic strength and relative abundance of monovalent and divalent cations (*RMD*). An adjustment model relating these parameters was developed through stepwise regression analysis (Draper & Smith, 1981) using a significance level of 0.05:

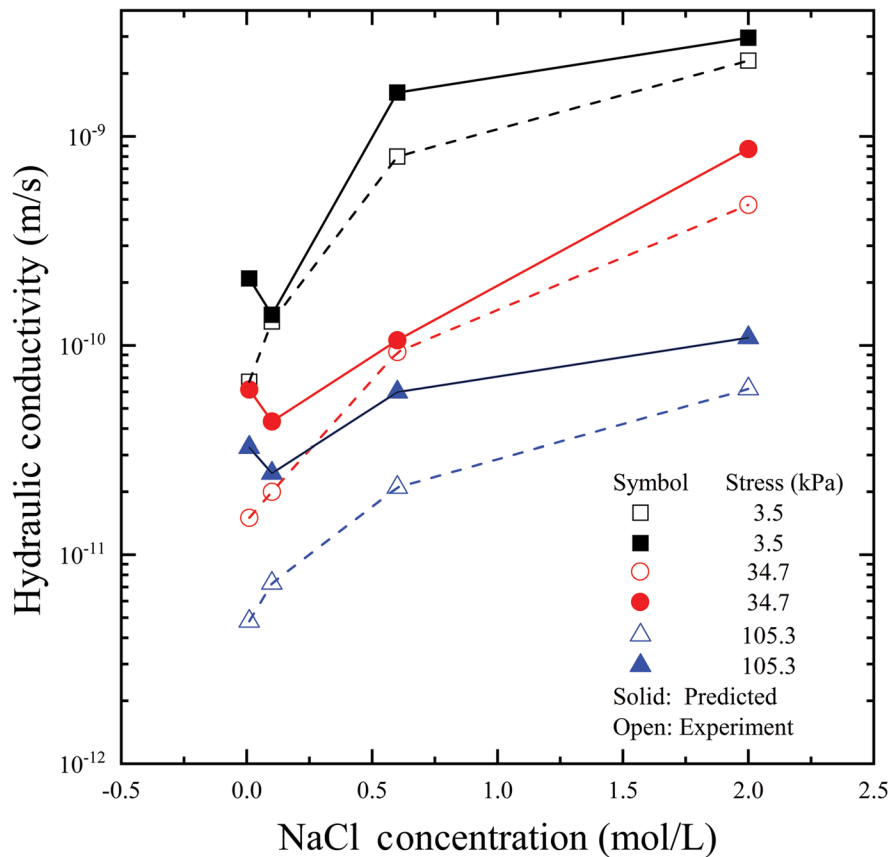


Fig. 6 Hydraulic conductivities at different pressures (NaCl)

$$\frac{\log K_{\text{exp}}}{\log K_{\text{DI}}} = 0.965 - 0.976I + 0.0797RMD + 0.251I^2RMD \quad (20)$$

where K_{exp} is the hydraulic conductivity to the inorganic chemical (m/s); K_{DI} is the hydraulic conductivity of deionized water (m/s); and I is the ionic strength. The influence of confining pressure cannot be considered in this model. To address the coupling of mechanical and chemical processes, the model accounted for the influence of the confining pressure by using regression techniques on extensive experimental data (Bradshaw et al., 2016; Chen et al., 2019; Jo et al., 2005; Lee & Shackelford, 2005; Petrov & Rowe, 1997); a good relationship between hydraulic conductivity of deionized water and the total net confining stress can be introduced conveniently as:

$$\log K_{\text{DI}} = -15.54 + 5.52 \log(10.20 - 1.89 \log \sigma_c) \quad (r^2 = 0.99) \quad (21)$$

Substituting Eq. 21 into 20 yields an empirical hydraulic conductivity which combines mechanical and chemical processes:

$$\log K_{\text{emp}} = (0.965 - 0.976I + 0.0797RMD + 0.251I^2RMD) \times (-15.54 + 5.52 \log(10.20 - 1.89 \log \sigma_c)) \quad (22)$$

Using the experimental data from Jo et al. (2005), details from example calculations of k_{pre} and k_{emp} are shown in Appendices I and II, respectively.

The deviation of the two models can be compared by the standard deviation of the sample

$$s = \sqrt{\frac{1}{N-1} \sum_{i=1}^N (x_i - \bar{x})^2} \quad (23)$$

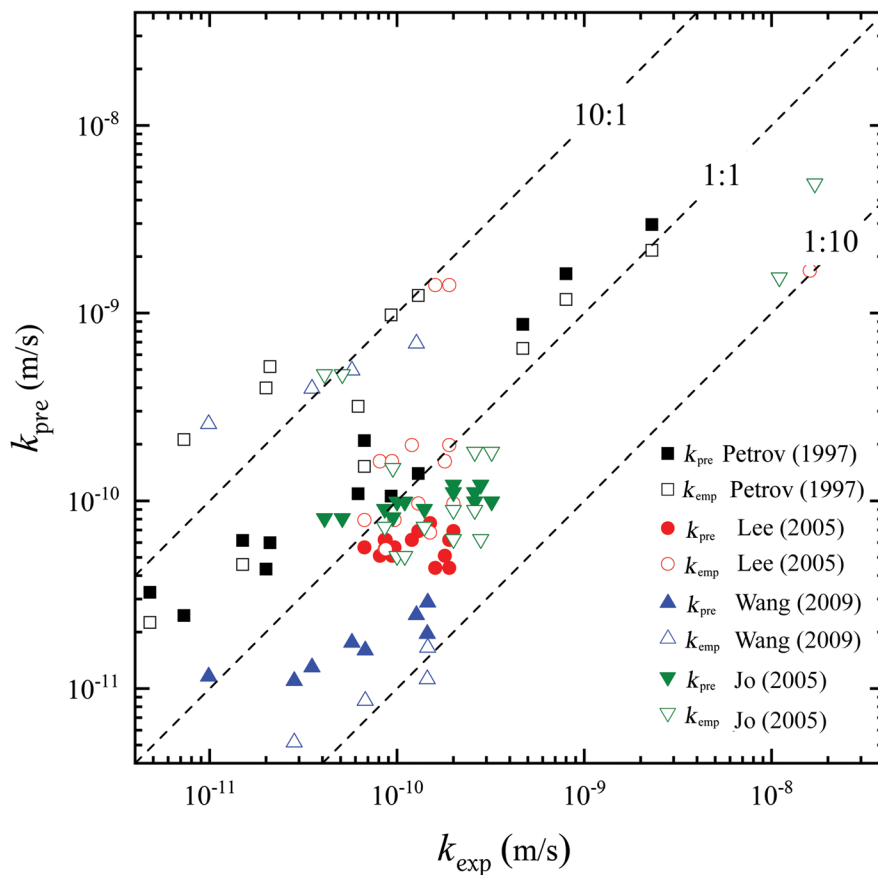


Fig. 7 Hydraulic conductivities of GCL: predicted model (k_{pre}) versus empirical model (k_{exp})

where N is the number of samples, x_i is the i^{th} sample, and \bar{x} is the sample average.

Comparison of the deterministic and the empirical models is summarized in Fig. 7 and in Table 1, using the standard deviations of the two models. All other data used in Fig. 7, were calculated using the method shown in Appendices I and II, and summarized in Appendix III. From Fig. 7 and Table 1, the predicted model is more accurate while the empirical model is simpler.

Table 1 The sample standard deviation in two models

Model	N	s
Predicted Theoretical Model (k_{pre})	102	3.9
Empirical Model (k_{emp})	121	8.3

Conclusions

A simplified mathematical expression was developed to predict the hydraulic conductivity of GCLs. Two external factors were identified: confining pressure and concentration of permeating salt solutions. Six internal factors were identified: exchangeable cations; ionic radius in bentonite; surface fractal dimension of montmorillonite; the distance between two montmorillonite layers (m), exchanged with cation i (i denotes the primary exchangeable cations, such as Na^+ , Ca^{2+} , K^+ , and Mg^{2+} in bentonite), after swelling; and the density and coefficient of viscosity of the interlayer fluid, which is often controlled or measured during construction of GCLs liners.

The proposed prediction model (k_{pre}) has a maximum deviation of ~1:10–10:1 compared to experimental results (k_{exp}), and the empirical model (k_{emp})

has a mean deviation of ~1:15–15:1 compared to experimental results (k_{exp}). The theoretical model is more accurate than the empirical model, especially in the case of high effective stress. The writers caution, however, that the practical regression empirical model should not be used as a substitute for hydraulic conductivity assessment in the field and laboratory.

This study presents a theoretical model that predicts the hydraulic conductivity of GCL. Although the predictions have been shown to agree well with experimental data, one must remember, however, that with theoretical models, taking into account all of the actual conditions in the calculation process is complex. The theoretical model was developed based on the DDL and fractal theory, and the assumptions inherent in those theories will affect the analytical model accordingly. Therefore, more details and suitable hypotheses should be considered when this theoretical model is used in the field and in practice.

Note also that this study was developed assuming room temperature conditions only. However, some studies have shown that the temperature will affect the expansion of clay minerals (Altoé et al., 2016; Gates et al., 2017; Michels et al., 2020), which is the term s_i in Eq. 4, and the predicted hydraulic conductivity accordingly. Therefore, the effect of temperature on the permeability coefficient should be addressed in future work.

Funding This study was supported by the National Natural Science Foundation of China (NSFC) (Nos. 51778353, 51978390); Open Research Fund of State Key Laboratory of Geomechanics and Geotechnical Engineering, Institute of Rock and Soil Mechanics, Chinese Academy of Sciences (No. Z018007); China Scholarship Council (CSC 201906895014); and the Youth Innovation Promotion Association CAS (2017376). The authors express their gratitude for this financial assistance. The authors also express their sincere gratitude to Prof. Benson, the former Dean and Hamilton Chair in Engineering, School of Engineering, University of Virginia, who offered valuable suggestions for this study.

Declarations

Conflict of Interest The authors declare that they have no conflict of interest.

References

- Abuel-Naga, H. M., Bouazza, A., & Gates, W. P. (2013). Thermomechanical behavior of saturated geosynthetic clay liners. *Journal of Geotechnical and Geo-Environmental Engineering*, 139, 539–547. [https://doi.org/10.1061/\(ASCE\)GT.1943-5606.0000799](https://doi.org/10.1061/(ASCE)GT.1943-5606.0000799)
- Altoé, M., Michels, L., Santos, E., & Roosevelt, D., Jr. (2016). Continuous water adsorption states promoted by Ni^{2+} confined in a synthetic smectite[J]. *Applied Clay Science*, 123, 83–91. <https://doi.org/10.1016/j.clay.2016.01.012>
- Avnir, D., & Jaroniec, M. (1989). An isotherm equation for adsorption on fractal surfaces of heterogeneous porous materials. *Langmuir*, 5, 1431–1433. <https://doi.org/10.1021/la00090a032>
- Benson, C. H., Chen, J. N., Edil, T. B., & Likos, W. J. (2018). Hydraulic conductivity of compacted soil liners permeated with coal combustion product leachates. *Journal of Geotechnical and Geoenvironmental Engineering*, 144, 04018011. [https://doi.org/10.1061/\(ASCE\)GT.1943-5606.0001855](https://doi.org/10.1061/(ASCE)GT.1943-5606.0001855)
- Benson, C.H. (2013). Impact of subgrade water content on cation exchange and hydraulic conductivity of geosynthetic clay liners in composite barriers. In *Coupled Phenomena in Environmental Geotechnics*; CRC Press: Boca Raton, Florida, USA. pp. 79–84. <https://doi.org/10.1201/b15004>
- Boadu, F. K. (2000). Hydraulic conductivity of soils from grain size distribution: New Models. *Journal of Geotechnical and Geoenvironmental Engineering*, 126, 739–746. [https://doi.org/10.1061/\(ASCE\)1090-0241\(2000\)126:8\(739\)](https://doi.org/10.1061/(ASCE)1090-0241(2000)126:8(739))
- Bolt, G. H. (1956). Physicochemical analysis of the compressibility of pure clays. *Geotechnique*, 6, 86–93. <https://doi.org/10.1680/geot.1956.6.2.86>
- Bouazza, A. (2002). Geosynthetic clay liners. *Geotextiles and Geomembranes*, 20, 3–7. [https://doi.org/10.1016/S0266-1144\(01\)00025-5](https://doi.org/10.1016/S0266-1144(01)00025-5)
- Bouazza, A., Zornberg, J., McCartney, J., & Singh, R. M. (2013). Unsaturated geotechnics applied to geoenvironmental engineering problems involving geo-synthetics. *Engineering Geology*, 165, 143–153. <https://doi.org/10.1016/j.enggeo.2012.11.018>
- Bouazza, A., Singh, R. M., & Rowe, R. K. (2014). Heat and moisture migration in a geomembrane-GCL composite liner subjected to high temperatures and low vertical stresses. *Geotextiles and Geomembranes*, 42, 555–563. <https://doi.org/10.1016/j.geotextmem.2014.08.002>
- Bouazza, A. Gates, W.P., & Abuel-Naga, H. (2006). Factors impacting liquid and gas flow through geosynthetic clay liners. In: *Two Decades of Geosynthetics in India*, pp. 119–146. https://www.researchgate.net/publication/285773141_Factors_impacting_liquid_and_gas_flow_through_geosynthetic_clay_liners
- Bradshaw, S. L., Benson, C. H., & Rauen, T. L. (2016). Hydraulic conductivity of geosynthetic clay liners to recirculated municipal solid waste leachates. *Journal of Geotechnical and Geoenvironmental Engineering*, 142, 04015074. [https://doi.org/10.1061/\(ASCE\)GT.1943-5606.0001387](https://doi.org/10.1061/(ASCE)GT.1943-5606.0001387)
- Chai, J. C., & Shen, S. L. (2018). Predicting swelling behavior of a Na^+ -Bentonite used in GCLs. *International Journal of Geosynthetics and Ground Engineering*, 4, 9. <https://doi.org/10.1007/s40891-018-0126-x>
- Chen, Y. G., Zhu, C. M., Ye, W. M., Cui, Y. J., & Chen, B. (2016). Effects of solute-ion concentration and vertical stress on the swelling behavior of compacted GMZ01

- bentonite. *Applied Clay Science*, 124–125, 11–20. <https://doi.org/10.1016/j.clay.2016.01.050>
- Chen, J. N., Benson, C. H., & Edil, T. B. (2019). Hydraulic conductivity of geosynthetic clay liners with sodium bentonite to coal combustion product leachates. *Journal of Geotechnical and Geoenvironmental Engineering*, 144, 04018008. [https://doi.org/10.1061/\(ASCE\)GT.1943-5606.0001844](https://doi.org/10.1061/(ASCE)GT.1943-5606.0001844)
- Chung, J., & Daniel, D. (2008). Modified fluid loss test as an improved measure of hydraulic conductivity for bentonite. *Geotechnical Testing Journal*, 3, 243–251. <https://www.astm.org/gtj100005.html>
- Colin, E., Clarke, W., & Clew, D. N. (1985). Evaluation of the thermodynamic functions for aqueous sodium chloride from equilibrium and calorimetric measurements below 154 °C. *Journal of Physical and Chemical Reference Data*, 14, 489–610. <https://doi.org/10.1063/1.555730>
- Dexter, A. R., & Richard, G. (2009). The saturated hydraulic conductivity of soils with n-modal pore size distributions. *Geoderma*, 154, 76–85. <https://doi.org/10.1016/j.geoderma.2009.09.015>
- Dominijanni, A., Manassero, M., & Puma, S. (2012). Coupled chemical hydraulic-mechanical behaviour of bentonites. *Geotechnique*, 63, 191–205. <https://doi.org/10.1680/geot.SIP13.P.010>
- Dominijanni, A., Guarena, N., & Manassero, M. (2018). Laboratory assessment of semi-permeable properties of a natural sodium bentonite. *Canadian Geotechnical Journal*, 55, 1611–1631. <https://doi.org/10.1139/cgj-2017-0599>
- Draper, N. R., & Smith, H. (1981). *Applied Regression Analysis* (2nd ed.). Wiley, New York.
- Egloffstein, T. A. (2001). Natural bentonites—influence of the ion exchange and partial desiccation on permeability and self-healing capacity of bentonites used in GCLs. *Geotextiles and Geomembranes*, 19, 427–444. [https://doi.org/10.1016/S0266-1144\(01\)00017-6](https://doi.org/10.1016/S0266-1144(01)00017-6)
- Fox, P. J., & Ross, J. D. (2011). Relationship between NP-GCL internal and HDPE GMX/NP GCL interface shear strengths. *Journal of Geotechnical and Geoenvironmental Engineering*, 137, 743–753. [https://doi.org/10.1061/\(ASCE\)GT.1943-5606.0000490](https://doi.org/10.1061/(ASCE)GT.1943-5606.0000490)
- Gates, W. P., Aldridge, L. P., Carnero-Guzman, G. G., et al. (2017). Water desorption and absorption isotherms of sodium montmorillonite: A QENS study. *Applied Clay Science*, 147, 97–104. <https://doi.org/10.1016/j.clay.2017.07.011>
- Giroud, J., Badu-Tweneboah, K., & Soderman, K. L. (1997). Comparison of leachate flow through compacted clay liners in landfill liner systems. *Geosynthetics International*, 4, 3–4. <https://doi.org/10.1680/gein.4.0100>
- Guan, C., Xie, H. J., Wang, Y. Z., Chen, Y. M., Jiang, Y. S., & Tang, X. W. (2014). An Analytical model for solute transport through a GCL-based two-layered liner considering biodegradation. *Science of the Total Environment*, 466–467, 221–231. <https://doi.org/10.1016/j.scitotenv.2013.07.028>
- Jadda, K., & Bag, R. (2020). Variation of swelling pressure, consolidation characteristics and hydraulic conductivity of two Indian bentonites due to electrolyte concentration. *Engineering Geology*, 272. <https://doi.org/10.1016/j.enggeo.2020.105637>
- Jo, H. Y., Katsumi, T., & Benson, C. H. (2001). Hydraulic conductivity and swell-ing of nonprehydrated GCLs permeated with single-species salt solutions. *Journal of Geotechnical and Geoenvironmental Engineering*, 127, 557–567. [https://doi.org/10.1061/\(ASCE\)1090-0241\(2001\)127:7\(557\)](https://doi.org/10.1061/(ASCE)1090-0241(2001)127:7(557))
- Jo, H. Y., Benson, C. H., Shackelford, C. D., Lee, J. M., & Edil, T. B. (2005). Long-term hydraulic conductivity of a geosynthetic clay liner permeated with inorganic salt solutions. *Journal of Geotechnical and Geoenvironmental Engineering*, 131, 405–417. [https://doi.org/10.1061/\(ASCE\)1090-0241\(2005\)131:4\(405\)](https://doi.org/10.1061/(ASCE)1090-0241(2005)131:4(405))
- Kang, J. B., & Shackelford, C. D. (2011). Consolidation enhanced membrane behavior of a geosynthetic clay liner. *Geotextiles and Geomembranes*, 29, 544–556. <https://doi.org/10.1016/j.geotextmem.2011.07.002>
- Kolstad, D. C., Benson, C. H., & Edil, T. B. (2004). Hydraulic conductivity and swell of nonprehydrated geosynthetic clay liners permeated with multispecies inorganic solutions. *Journal of Geotechnical and Geoenvironmental Engineering*, 130, 1236–1249. [https://doi.org/10.1061/\(ASCE\)1090-0241\(2004\)130:12\(1236\)](https://doi.org/10.1061/(ASCE)1090-0241(2004)130:12(1236))
- Kolstad, D. C., Benson, C. H., & Edil, T. B. (2006). Errata for “Hydraulic conductivity and swell of nonprehydrated geosynthetic clay liners permeated with multispecies inorganic solutions.” *Journal of Geotechnical and Geoenvironmental Engineering*, 132, 962–962. [https://doi.org/10.1061/\(ASCE\)1090-0241\(2006\)132:7\(962\)](https://doi.org/10.1061/(ASCE)1090-0241(2006)132:7(962))
- Komine, H. (2004a). Simplified evaluation for swelling characteristics of bentonites. *Engineering Geology*, 71, 265–279. [https://doi.org/10.1016/S0013-7952\(03\)00140-6](https://doi.org/10.1016/S0013-7952(03)00140-6)
- Komine, H. (2004b). Simplified evaluation on hydraulic conductivities of sand bentonite mixture backfill. *Applied Clay Science*, 26, 13–19. <https://doi.org/10.1016/j.clay.2003.09.006>
- Komine, H. (2005). Theoretical equations for evaluating hydraulic conductivities of bentonite-based buffer and backfill. *Proceedings of the 16th International Conference on Soil Mechanics and Geotechnical Engineering*, 2289–2292.
- Komine, H., & Ogata, N. (1996). Prediction for swelling characteristics of compacted bentonite. *Canadian Geotechnical Journal*, 33, 11–22. <https://doi.org/10.1139/t96-021>
- Komine, H., & Ogata, N. (2003). New equations for swelling characteristics of bentonite-based buffer materials. *Canadian Geotechnical Journal*, 40, 460–475. <https://doi.org/10.1139/t02-115>
- Komine, H., & Ogata, N. (2004). Predicting swelling characteristics of bentonites. *Journal of Geotechnical and Geoenvironmental Engineering*, 130, 818–829. [https://doi.org/10.1061/\(ASCE\)1090-0241\(2004\)130:8\(818\)](https://doi.org/10.1061/(ASCE)1090-0241(2004)130:8(818))
- Lang, A. R. G. (1967). Osmotic coefficients and water potentials of sodium chloride solutions from 0 to 40°C. *Australian Journal of Chemistry*, 20, 2017–2023. <https://doi.org/10.1071/CH9672017>
- Lee, J. M., & Shackelford, C. D. (2005). Concentration dependency of the prehydration effect for a geosynthetic clay liner. *Soils and Foundations*, 45, 27–41. https://doi.org/10.3208/sandf.45.4_27
- Lee, J. M., Shackelford, C. D., Benson, C. H., et al. (2005). Correlating index properties and hydraulic conductivity

- of geosynthetic clay liners. *Journal of Geotechnical and Geoenvironmental Engineering*, 131, 1319–1329. [https://doi.org/10.1061/\(ASCE\)1090-0241\(2005\)131:11\(1319\)](https://doi.org/10.1061/(ASCE)1090-0241(2005)131:11(1319))
- Li, X. Y., & Xu, Y. F. (2019). Method for calculating swelling deformation of bentonite in salt solution. *Chinese Journal of Geotechnical Engineering*, 41, 2353–2359.
- Li, Q., Chen, J. N., Benson, C. H., et al. (2020). Hydraulic conductivity of bentonite-polymer composite geosynthetic clay liners permeated with bauxite liquor. *Geotextiles and Geomembranes*, 49, 420–429. <https://doi.org/10.1016/j.geotexmem.2020.10.015>
- Liu, Y., Gates, W. P., Bouazza, A., & Rowe, R. K. (2014). Fluid loss as a quick method to evaluate hydraulic conductivity of geosynthetic clay liners under acidic conditions. *Canadian Geotechnical Journal*, 51, 158–163. <https://doi.org/10.1139/cgj-2013-0241>
- Liu, Y., Hao, Y., & Wang, L.Z. (2018). Using fluid loss to evaluate the hydraulic conductivity of geosynthetic clay liners under mining leachates. Proceedings of the 8th International Congress on Environmental Geotechnics. 2, 679–685. https://doi.org/10.1007/978-981-13-2224-2_84
- Malusis, M. A., Shackelford, C. D., & Kang, J. B. (2015). Restricted salt diffusion in a geosynthetic clay liner. *Environmental Geotechnics*, 2, 68–77. <https://doi.org/10.1680/envgeo.13.00080>
- Mandelbrot, B. B. (1982). *The fractal geometry of nature*. W.H. Freeman.
- Mesri, G., & Olson, R. E. (1970). Shear strength of montmorillonite. *Geotechnique*, 20, 261–270. <https://doi.org/10.1680/geot.1970.20.3.261>
- Michels, L., Méheust, Y., Mario, A. S., Santos, A. É. C., dos Hemmen, H., Droppa, R., Fossum, J. J. O., & Silva, G. J. (2019). Water vapor diffusive transport in a smectite clay: Cationic control of normal versus anomalous diffusion. *Physical Review E*, 99, 1. <https://doi.org/10.1103/PhysRevE.99.013102>
- Michels, L., Fonseca, C., Méheust, M. A. S., Altoé, E. C. S., Grassi, G., Droppa, R., Knudsen, J. K. D., Cavalcanti, L. P., & Cavalcanti, P. (2020). The Impact of Thermal History on Water Adsorption in a Synthetic Nanolayered Silicate with Intercalated Li⁺ or Na⁺. *The Journal of Physical Chemistry C*, 124(45), 24690–24703. <https://doi.org/10.1021/acs.jpcc.0c05847>
- Naka, A., Flores, G., Katsumi, T., & Sakanakura, H. (2016). Factors influencing hydraulic conductivity and metal retention capacity of geosynthetic clay liners exposed to acid rock drainage. *Japanese Geotechnical Society Special Publication*, 2, 2379–2384. <https://doi.org/10.3208/jgssp.IGS-43>
- Nakano, K., & Miyazaki, T. (2005). Predicting the saturated hydraulic conductivity of compacted subsoils using the nonsimilar media concept. *Soil and Tillage Research*, 84, 145–153. <https://doi.org/10.1016/j.still.2004.11.010>
- Neimark, A. V. (1990). Thermodynamic method for calculating surface fractal dimension. *Soviet Journal of Experimental and Theoretical Physics Letters*, 50, 607.
- Peng, L., Chen, B., & Pan, Y. (2020). Evaluation and comparison of bentonite surface fractal dimension and prediction of swelling deformation: Synchrotron radiation SAXS and N₂-adsorption isotherms method. *Construction and Building Materials*, 269, 121331. <https://doi.org/10.1016/j.conbuildmat.2020.121331>
- Petrov, R. J., & Rowe, R. K. (1997). Geosynthetic clay liner (GCL)-chemical compatibility by hydraulic conductivity testing and factors impacting its performance. *Canadian Geotechnical Journal*, 34, 863–885. <https://doi.org/10.1139/t97-055>
- Pfeifer, P., & Schmidt, P. W. (1988). Porod scattering from fractal surfaces. *Physical Review Letters*, 60, 1435. <https://doi.org/10.1103/PhysRevLett.60.1344>
- Pusch, R. (1999). Microstructural evolution of buffers. *Engineering Geology*, 54, 33–41. [https://doi.org/10.1016/S0013-7952\(99\)00059-9](https://doi.org/10.1016/S0013-7952(99)00059-9)
- Pusch, R., & Yong, R. (2003). Water saturation and retention of hydrophilic clay microstructural aspects. *Applied Clay Science*, 23, 61–68. [https://doi.org/10.1016/S0169-1317\(03\)00087-5](https://doi.org/10.1016/S0169-1317(03)00087-5)
- Quinton, W. L., Elliot, T., Price, J. S., Rezanezhad, F., & Heck, R. (2009). Measuring physical and hydraulic properties of peat from X-ray tomography. *Geoderma*, 153, 269–277. <https://doi.org/10.1016/j.geoderma.2009.08.010>
- Rao, S. M., & Thyagaraj, T. (2007). Swell-compression behaviour of compacted clays under chemical gradients. *Canadian Geotechnical Journal*, 44, 520–532. <https://doi.org/10.1139/t07-002>
- Rouf, M. A., Bouazza, A., Singh, R. M., Gates, W. P., & Rowe, R. K. (2016). Water vapour adsorption and desorption in GCLs. *Geosynthetics International*, 23, 86–99. <https://doi.org/10.1680/jgein.15.00034>
- Rowe, R.K. (1998). Geosynthetics and the minimization of contaminant migration through barrier systems beneath solid waste. Proceedings 6th International Conference on Geosynthetics, Atlanta. 1, 27–102. <https://www.researchgate.net/publication/291698097>
- Rowe, R. K. (2014). Performance of GCLs in liners for landfill and mining applications. *Environmental Geotechnics*, 1, 3–21. <https://doi.org/10.1680/envgeo.13.00031>
- Saidi, F., Touze-Foltz, N., & Goblet, P. (2006). 2D and 3D numerical modelling of flow through composite liners involving partially saturated GCLs. *Geosynthetics International*, 13, 265–276. <https://doi.org/10.1680/gein.2006.13.6.265>
- Scalia, J., & Benson, C. H. (2011). Hydraulic conductivity of geosynthetic clay liners exhumed from landfill final covers with composite barriers. *Journal of Geotechnical and Geoenvironmental Engineering*, 137, 1–13. [https://doi.org/10.1061/\(ASCE\)GT.1943-5606.0000407](https://doi.org/10.1061/(ASCE)GT.1943-5606.0000407)
- Scalia, J., Bohnhoff, G. L., Shackelford, C. D., Benson, C. H., Sample-Lord, K. M., Malusis, M. A., & Likos, W. J. (2018). Enhanced bentonites for containment of inorganic waste leachates by GCLs. *Geosynthetics International*, 25, 392–411. <https://doi.org/10.1680/jgein.18.00024>
- Schaap, M. G., & Leij, F. J. (1998). Using neural networks to predict soil water retention and soil hydraulic conductivity. *Soil and Tillage Research*, 47, 37–42. [https://doi.org/10.1016/S0167-1987\(98\)00070-1](https://doi.org/10.1016/S0167-1987(98)00070-1)
- Schanz, T., & Tripathy, S. (2009). Swelling pressure of a divalent-rich bentonite: Diffuse double-layer theory revisited. *Water Resources Research*, 45, W00C12. <https://doi.org/10.1029/2007WR006495>

- Shackelford, C. D., Sevick, G. W., & Eykholt, G. R. (2010). Hydraulic conductivity of geosynthetic clay liners to tailings impoundment solutions. *Geotextiles and Geomembranes*, 28, 149–162. <https://doi.org/10.1016/j.geotexmem.2009.10.005>
- Shen, S. L., Wang, J. P., Wu, H. N., Xu, Y. S., Ye, G. L., & Yin, Z. Y. (2015). Evaluation of hydraulic conductivity for both marine and deltaic deposit based on piezocone test. *Ocean Engineering*, 110, 174–182. <https://doi.org/10.1016/j.oceaneng.2015.10.011>
- Siddiqua, S. S., Blatz, J. B., & Siemens, G. S. (2011). Evaluation of the impact of pore fluid chemistry on the hydromel-chanical behavior of clay-based sealing materials. *Canadian Geotechnical Journal*, 48, 199–213. <https://doi.org/10.1139/T10-064>
- Siemens, G., Take, W. A., Rowe, R. K., & Brachman, R. W. I. (2012). Numerical investigation of transient hydration of unsaturated geosynthetic clay liners. *Geosynthetics International*, 19, 232–251. <https://doi.org/10.1680/gein.12.00011>
- Sposito, G. (1984). *The Surface Chemistry of Soils*. Oxford University Press, Oxford, UK.
- Stepniewski, W., Widomski, M.K., & Horn, R. (2011). Hydraulic conductivity and landfill construction. In Dikinya, O. (ed.): *Developments in Hydraulic Conductivity Research*. Intech, Rijeka, Croatia, 249–270.
- Thevanayagam, S., & Nesarajah, S. (1998). Fractal model for flow through saturated soils. *Journal of Geotechnical and Geoenvironmental Engineering*, 124, 53–66. [https://doi.org/10.1061/\(ASCE\)1090-0241\(1998\)124:1\(53\)](https://doi.org/10.1061/(ASCE)1090-0241(1998)124:1(53))
- Vasko, S. Jo, H.Y. Benson, C.H., & Edil, T.B. (2001). Hydraulic conductivity of partially prehydrated geosynthetic clay liners permeated with aqueous calcium chloride solutions. Proc. Geosynthetics, St. Paul, Minnesota, USA. 685–699. <https://www.researchgate.net/publication/285735788>
- Wang, B., Xu, J., Chen, B., Dong, X. L., & Dou, T. T. (2019a). Hydraulic conductivity of geosynthetic clay liners to inorganic waste leachate. *Applied Clay Science*, 168, 244–238. <https://doi.org/10.1016/j.clay.2018.11.021>
- Wang, B., Chen, B., Dou, T. T., & Dong, X. L. (2019b). Influences of stabilization/solidification product leachates on hydraulic performance of geosynthetic clay liners. *Chinese Journal of Geotechnical Engineering*, 41, 390–396. http://manu31.magtech.com.cn/Jwk_ytgxcb/EN/abstract/abstract17697.shtml in Chinese.
- Wang, B., Dong, X. L., Chen, B., & Dou, T. T. (2019c). Hydraulic conductivity of geosynthetic clay liners permeated with acid mine drainage. *Mine Water and the Environment*, 38, 658–666. <https://doi.org/10.1007/s10230-019-00611-7>
- Xiang, S. G., Xu, Y. F., Yu, F., Fang, Y., & Wang, Y. (2019). Prediction of swelling characteristics of compacted GMZ bentonite in salt solution incorporating ion-exchange reactions. *Clays and Clay Minerals*, 67, 163–172.
- Xie, H. J., Zhang, C. H., Feng, S. J., & Wang, Q. (2018). Analytical model for degradable organic contaminant transport through GMB/GCL/AL system. *Journal of Environmental Engineering*, 144, 04018006. [https://doi.org/10.1061/\(ASCE\)EE.1943-7870.0001338](https://doi.org/10.1061/(ASCE)EE.1943-7870.0001338)
- Xu, Y. F., Matsuoka, H., & Sun, D. A. (2003). Swelling characteristics of fractal-textured bentonite and its mixtures. *Applied Clay Science*, 22, 197–209. [https://doi.org/10.1016/S0169-1317\(02\)00159-X](https://doi.org/10.1016/S0169-1317(02)00159-X)
- Xu, Y. F., Sun, D. A., & Yao, Y. P. (2004). Surface fractal dimension of bentonite and its application to determination of swelling properties chaos. *Solitons and Fractals*, 19, 347–356. [https://doi.org/10.1016/S0960-0779\(03\)00047-X](https://doi.org/10.1016/S0960-0779(03)00047-X)
- Xu, Y., Xiang, G., Jiang, H., Chen, T., & Chu, F. F. (2014a). Role of osmotic suction in volume change of clays in salt solution. *Applied Clay Science*, 101, 354–361. <https://doi.org/10.1016/j.clay.2014.09.006>
- Xu, Y. F., Xiang, G. S., Jiang, H., Chen, T., & Chu, F. F. (2014b). Role of osmotic suction in volume change of clays in salt solution. *Applied Clay Science*, 101, 354–361. <https://doi.org/10.1016/j.clay.2014.09.006>
- Xue, Q., Zhang, Q., & Liu, L. (2012). Impact of high concentration solutions on hydraulic properties of geosynthetic clay liner materials. *Materials*, 5, 2326–2341. <https://doi.org/10.3390/ma5112326>
- Yan, H. X., Wu, J. W., & Thomas, H. R. (2020). Analytical model for coupled consolidation and diffusion of organic contaminant transport in triple landfill liners. *Geotextiles and Geomembranes*, 49, 489–499. <https://doi.org/10.1016/j.geotexmem.2020.10.019>
- Yin, Y. (1991). Adsorption isotherm on fractally porous materials. *Langmuir*, 7, 216–217. <https://doi.org/10.1021/la00050a002>
- Yong, R. N., & Mohamed, A. M. O. (1992). A study of particle interaction energies in wetting of unsaturated expensive clays. *Canadian Geotechnical Journal*, 29, 1060–1070. <https://doi.org/10.1139/t92-123>
- Zhu, C. M., Ye, W. M., Chen, Y. G., Chen, B., & Cui, Y. J. (2015). Impact of cyclically infiltration of CaCl₂ solution and deionized water on volume change behavior of compacted GMZ01 bentonite. *Engineering Geology*, 184, 104–110. <https://doi.org/10.1016/j.enggeo.2014.11.005>