

JOURNAL POLICY

PALEOBIOLOGY publishes original research contributions dealing with any aspect of biological paleontology and geobiology. Papers should emphasize biological or paleobiological processes and patterns and seek to answer a question or test a hypothesis of broad significance. Appropriate topics or themes include, but are not limited to, speciation, extinction, development, natural selection, evolution, and patterns of variation, abundance, and distribution in space and time. Papers concerning research on recent organisms and systems are appropriate if they are relevant to paleontologists.

All manuscripts are to be in English. A guide to manuscript preparation is published on-line at: <http://www.paleosoc.org/paleobio.htm>. All manuscript submissions and the review process are handled on-line at: <http://paleobiology.allentrack.net>. Submission of a manuscript to PALEOBIOLOGY implies that it is not simultaneously being considered for publication by another journal.

Manuscripts are typically 50 pages or less (including text, references, tables, and figures); shorter manuscripts are encouraged. Supplementary materials (including, for example, large data tables) are not published in the print version, but are archived at DRYAD at <http://datadryad.org/>. Pre-submission inquiries about potential suitability of manuscripts should be directed to the editors at: paleobiology@flmnh.ufl.edu.

MANUSCRIPT ACCEPTANCE POLICY

It is understood that, in return for publication, the journal has the nonexclusive right to publish the contribution and the continuing right, without limit, to include the contribution as part of any reprinting of the issue and/or volume of the journal in which the contribution first appeared by any means and in any format, including computer-assisted storage and readout, in which the issue and/or volume may be reproduced by the publisher or by its licensed agencies.

The appearance of the code at the bottom of the first page of each contribution in this journal indicates the copyright owner's consent that copies of the article (or of articles in back issues) may be made for personal use. For copying beyond that permitted by Sections 107 or 108 of the U.S. Copyright Law, this consent is given on the condition that the copier pay the stated per-copy fee through the Copyright Clearance Center, Inc. (P.O. Box 765, Schenectady, New York 12301). This consent does not extend to other kinds of copying, such as copying for general distribution, for advertising or promotional purposes, for creating new collective works, or for resale, and similar.

Paleobiology is published by the Paleontological Society. Members of the society automatically receive electronic subscriptions to *Paleobiology* and the *Journal of Paleontology* as a benefit of membership.

Please address all matters relating to membership and subscriptions to Ms. Cheryl Moore, Association Manager, at paleosoc@allenpress.com or by regular mail at Paleobiology Subscriptions, P.O. Box 1897, 810 East 10th Street, Lawrence, Kansas 66044-8897, USA. Fees for 2014 are:

Regular (including on-line subscriptions to <i>Journal of Paleontology</i> and <i>Paleobiology</i>)	\$55.00
Retired (including on-line subscriptions to <i>Journal of Paleontology</i> and <i>Paleobiology</i>) (The PS Secretary is required to certify eligibility for "retired" status)	\$50.00
Student (including on-line subscriptions to <i>Journal of Paleontology</i> and <i>Paleobiology</i>)	\$30.00
Spouse (including on-line subscription to <i>Paleobiology</i>)	\$30.00
<i>Paleobiology</i> paper subscription, in addition to regular or retired membership fee	\$35.00
<i>Paleobiology</i> paper subscription, in addition to student membership fee	\$25.00
<i>Journal of Paleontology</i> paper subscription, in addition to regular membership fee	\$95.00
<i>Journal of Paleontology</i> paper subscription, in addition to retired membership fee	\$75.00
<i>Journal of Paleontology</i> paper subscription, in addition to student membership fee	\$35.00

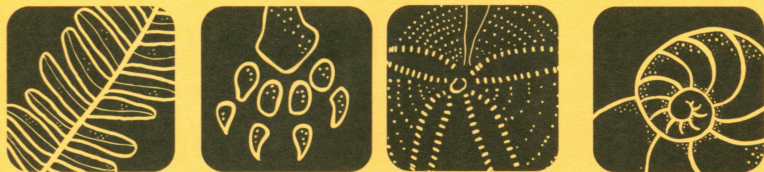
To apply for individual membership and subscriptions, please go to the Paleontological Society's homepage at <http://paleosoc.org/> where links to an electronic application, a printable paper application form, and a complete list of membership benefits are provided under **Membership**.

2014 Institutional subscription rates are: ***Journal of Paleontology*—\$360.00, *Paleobiology*—\$200.00**

To initiate an institutional subscription to one or both journals, please contact Ms. Cheryl Moore, Association Manager, at paleosoc@allenpress.com or by regular mail at the address given above.

Back issues: \$8.50 for members, \$16.00 for nonmembers. Price includes postage and handling.

10th NORTH AMERICAN PALEONTOLOGICAL CONVENTION



FLORIDA MUSEUM OF NATURAL HISTORY

Gainesville, Fla. • Feb. 15-18, 2014
on the University of Florida campus

Important Dates:

Abstract Deadline – Sept. 20, 2013

Early Registration Deadline – Dec. 8, 2013

Regular Registration Deadline – Jan. 31, 2014

(On-site registration available)

A list of symposia titles and
conveners is available online,
www.flmnh.ufl.edu/napc/

**Pre- and post-conference field trips are
tentatively planned for Feb. 13-14 and 19-20.**

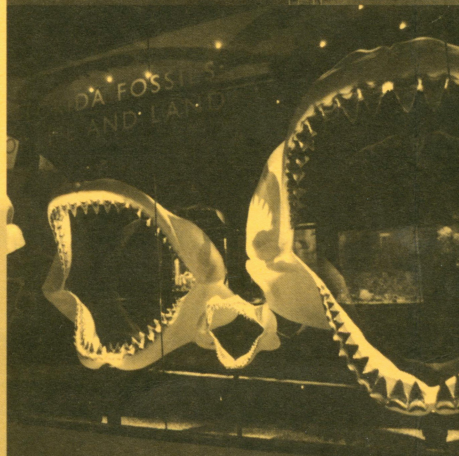
Pre-conference field trips:

- Haile/Thomas Farm
(Eocene limerock mine/Miocene sinkhole fill)
- SMR Aggregates Shell Pit *(Plio-Pleistocene)*
- The Florida Panhandle
(two-day; Eocene to Pliocene quarries & riverbanks)

Post-conference field trips:

- Bone Valley Phosphate Mine *(Mio-Pliocene)*
- The Florida Keys *(two-day; Pleistocene-Holocene)*

Please visit www.flmnh.ufl.edu/napc/ or
email napc@flmnh.ufl.edu for more information.



The North American Paleontological Convention is an international event administered by the Paleontological Society and the Association of North American Paleontological Societies. Initiated in 1969, the convention is held every 4-5 years and includes participation from all paleontology fields. More than 500 participants from 26 countries attended the most recent convention in Cincinnati in 2009.



FLORIDA MUSEUM
OF NATURAL HISTORY



UNIVERSITY of
FLORIDA