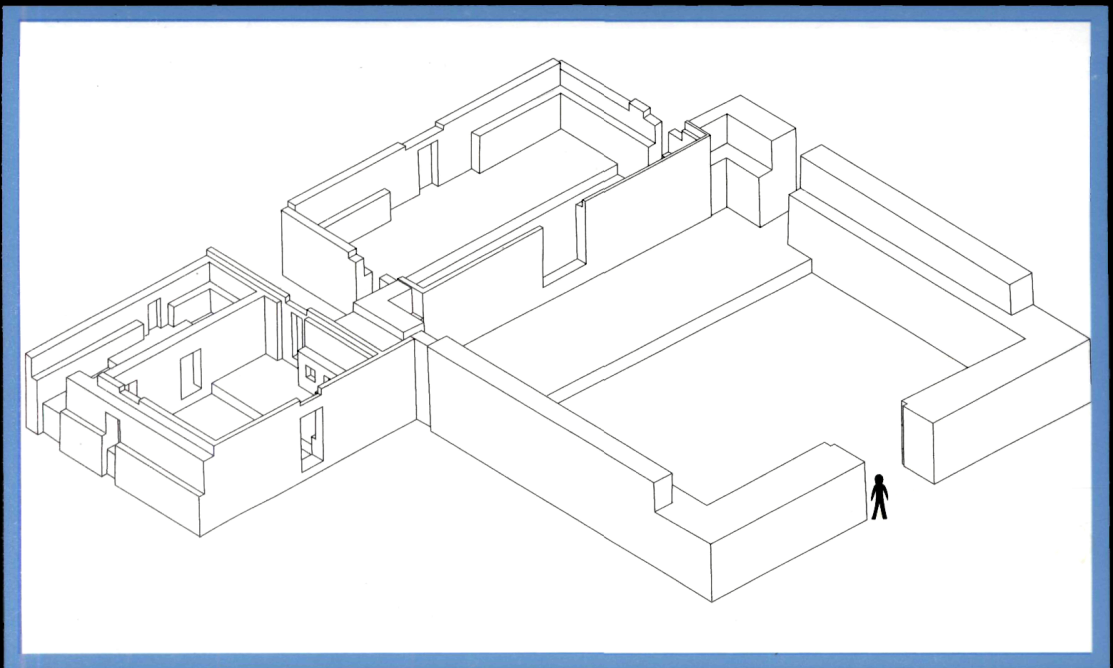


LATIN AMERICAN ANTIQUITY

VOLUME 21 NUMBER 2 JUNE 2010



SAA
SOCIETY FOR AMERICAN ARCHAEOLOGY

SOCIETY FOR AMERICAN ARCHAEOLOGY

EDITORIAL STAFF OF LATIN AMERICAN ANTIQUITY

- Co-editor:* CHRISTOPHER A. POOL, Department of Anthropology, 211 Lafferty Hall, University of Kentucky, Lexington, KY 40506-0024. Telephone (859) 257-2793; Email: laqeditor@gmail.com
- Co-editor:* GABRIELA URUÑUELA Y LADRÓN DE GUEVARA, Universidad de las Américas Puebla, Santa Catarina Mártir, 72820 Cholula, Puebla, México; Email: laqeditor@gmail.com
- Managing Editor:* JOHN NEIKIRK, Society for American Archaeology, 900 Second Street NE, Suite 12, Washington, DC 2000; Email john_neikirk@saa.org
- Editorial Assistant for Christopher A. Pool:* KYLE MULLEN, Department of Anthropology, 211 Lafferty Hall, University of Kentucky, Lexington, KY 40506-0024; Email: laqeditor@gmail.com
- Editorial Assistant for Gabriela Uruñuela y Ladrón de Guevara:* MARÍA TERESA SALOMÓN SALAZAR, Departamento de Antropología, Universidad de las Américas, Puebla, Santa Catarina Mártir, 72820 Cholula, Puebla, México.
- Associate Editor for Book Reviews:* PHILIP J. ARNOLD III (Department of Anthropology, Loyola University, Chicago IL). Email: laqbooks@gmail.com

EDITORIAL ADVISORY COMMITTEE FOR LATIN AMERICAN ANTIQUITY

- DEAN E. ARNOLD (Department of Sociology and Anthropology, Wheaton College, Wheaton, IL)
- BARBARA ARROYO (Museo Popol Vuh, Universidad Francisco Marroquín, Guatemala, Guatemala)
- GEORGE J. BEY III (Department of Sociology/Anthropology, Millsaps College, Jackson, MS)
- LUIS ALBERTO BORRERO (Consejo Nacional de Investigaciones Científicas y Técnicas-CONICET: Buenos Aires, Argentina)
- ELIZABETH BRUMFIEL (Department of Anthropology, Northwestern University, Evanston, IL)
- L. ANTONIO CURET (Department of Anthropology, Field Museum, Chicago, IL)
- VÉRONIQUE DARRAS (UMR 8096 "Archéologie des Amériques," Maison René Ginouvès d'Archéologie et d'Ethnologie, Université de Paris Ouest Nanterre la Défense, France)
- TOM D. DILLEHAY (Department of Anthropology, Vanderbilt University, Nashville, TN)
- ROBERT D. DRENNAN (Department of Anthropology, University of Pittsburgh, Pittsburgh, PA)
- CRISTOBAL GNECCO (Departamento de Antropología, Universidad de Cauca, Popayán, Cauca, Colombia)
- STEPHEN D. HOUSTON (Department of Anthropology, Brown University, Providence, RI)
- ARTHUR JOYCE (Department of Anthropology, University of Colorado, Boulder, CO)
- ROSEMARY JOYCE (Department of Anthropology, University of California, Berkeley, CA)
- LINDA MANZANILLA (Instituto de Investigaciones Antropológicas, Universidad Nacional Autónoma de México, México, D.F., México)
- MARIA MASUCCI (Department of Anthropology, Drew University, Madison, NJ)
- JOSÉ OLIVER (Institute of Archaeology, University College London, London, United Kingdom).
- PATRICIA PLUNKET (Departamento de Antropología, Universidad de las Américas Puebla, Cholula, Puebla, México)
- GUSTAVO POLITIS (División de Arqueología, Facultad de Ciencias y Museo, La Plata, Argentina).
- STÉPHEN ROSTAIN (C.N.R.S. Maison René Ginouvès-Archéologie & Ethnologie, Nanterre Cedex, France)
- DANIEL SANDWEISS (Department of Anthropology/Climate Change Institute/Graduate School, University of Maine, Orono, ME)
- PAYSON SHEETS (Department of Anthropology, University of Colorado, Boulder, CO)

Latin American Antiquity (ISSN 1045-6635) is published quarterly in March, June, September, and December by the Society for American Archaeology, 900 Second Street, N.E., Suite 12, Washington, DC 20002-3560. The journal is one of two offered as a benefit of individual membership. Subscription rates are \$159.00 for institutions residing in Australia, Bahrain, Bermuda, Canada, Cyprus, Israel, Japan, Korea, Kuwait, Libya, New Caledonia, New Zealand, Qatar, Saudi Arabia, Sultanate of Oman, Singapore, Taiwan, United States, or western Europe; \$60.00 for members in these countries who already receive the society's other journal as a membership benefit; and \$38.00 for members in Latin America or any other country not listed above. To subscribe, change an address, or order back issues, please write to the Society for American Archaeology at the above address. Prepayment is required, payable in U.S. funds. *Latin American Antiquity* is not available for exchange. Claims for nonreceipt and for damaged copies must be made within 90 days (U.S.) or 180 days (non-U.S.) of the publication date for free replacement. Non-U.S. deliveries cannot be guaranteed; non-U.S. members and subscribers may purchase replacement copies at a 20% discount. *Latin American Antiquity* is typeset by Oakland Street Publishing, Arlington, Virginia, and printed by IPC, St. Joseph, Michigan.

Periodicals postage paid at Washington, D.C., and additional mailing offices. POSTMASTER: Send address changes to *Latin American Antiquity*, c/o Society for American Archaeology, 900 Second Street, N.E., Suite 12, Washington, DC 20002.

LATIN AMERICAN ANTIQUITY

VOLUME 21 NUMBER 2 JUNE 2010

- 115 Cerro Lampay: Architectural Design and Human Interaction in the North Central Coast of Peru
Rafael Vega-Centeno
- 147 Architecture, Settlement, and Formative Developments in the Equatorial Andes:
New Discoveries in the Department of Tumbes, Peru
Jerry D. Moore
- 173 Inca “Stone Ancestors” in Context at a High-Altitude *Usnu* Platform
Frank M. Meddens, Colin McEwan, and Cirilo Vivanco Pomacanchari
- 195 Lecturas estratigráficas: arquitectura funeraria y depositación de residuos en el sambaquí Jabuticabeira II
Ximena Suarez Villagran, Daniela Klokler, Paula Nishida, Maria Dulce Gaspar, Y Paulo Deblasis
- 217 Book Review Essay: The Arawak Diaspora
Comparative Arawakan Histories: Rethinking Language Family and Culture Area in Amazonia, edited by Jonathan D. Hill and Fernando Santosgranero; *The Ecology of Power: Culture, Place, and Personhood in the Southern Amazon, A.D. 1000–2000*, by Michael J. Heckenberger; and *The Tainos: Rise and Decline of The People Who Greeted Columbus*, by Irving Rouse.
Peter W. Stahl

Latin American Antiquity is indexed or abstracted in the *Hispanic American Periodicals Index* and *Academic Abstracts*.
Copyright © 2010 by the Society for American Archaeology. All rights reserved.
ISSN 1045-6635

Editorial Manager[®]

Manuscript Submission System for *Latin American Antiquity*

Latin American Antiquity uses an online manuscript submission and tracking system, Editorial Manager[®]. Editorial Manager is a Web-based manuscript submission and peer review system developed by Aries Systems Corporation for scholarly journals, reference works, and conference proceedings; more than 3,000 publications currently use workflow solutions from Aries Systems.

Editorial Manager is simple to use, and tutorials and instructions are available to acquaint authors and reviewers with the procedures. Using the system, authors submit original and revised manuscripts, editorial staff send manuscripts out for peer review, reviewers conduct reviews and return comments, and editors make final decisions.

Authors are required to use Editorial Manager for all submissions of new manuscripts.

For *Latin American Antiquity*, the system can be accessed at <http://www.editorialmanager.com/laq>.