

ERRATUM

Initially fewer bloodstream infections for allogeneic versus autologous stem-cell transplants in neutropenic patients – ERRATUM

S. HIEKE, H. BERTZ, M. DETTENKOFER, M. SCHUMACHER
AND J. BEYERSMANN

doi: 10.1017/S0950268812000283, Published by Cambridge University Press, 7 March 2012.

In the article by S. Hieke, H. Bertz, M. Dettenkofer, M. Schumacher, and J. Beyersmann [1] there was an error in the annotation of the Y-axis in [figure 2](#) (b).

[Figures 2](#) (a) and (b) are reproduced below with the correct annotation.

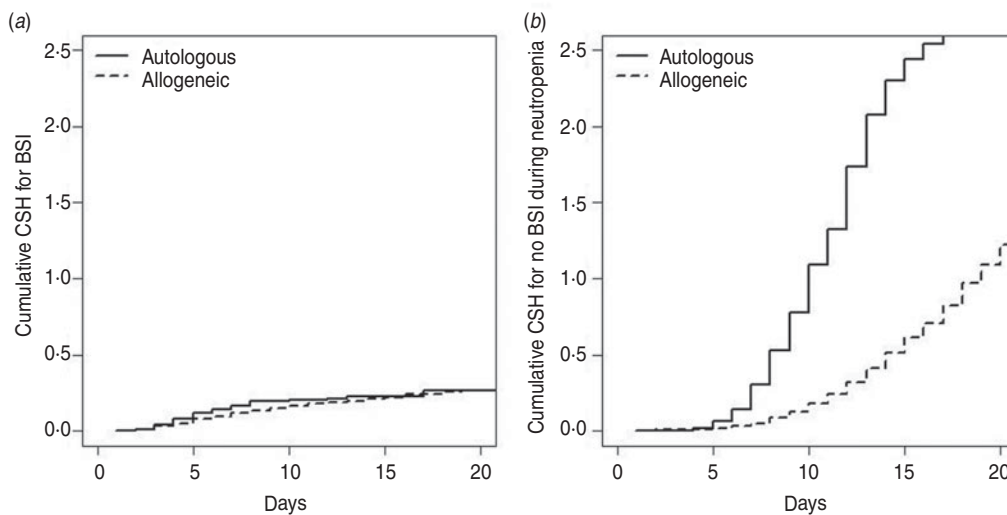


Fig. 2. Nelson–Aalen estimates of the cumulative cause-specific hazards (CSH) within the transplant group. BSI, Bloodstream infection.

REFERENCE

1. Hieke S, Bertz H, Dettenkofer M, Schumacher M, Beyersmann J. Initially fewer bloodstream infections for allogeneic vs. autologous stem-cell transplants in neutropenic patients. *Epidemiology and Infection*, 2013; **141**: 158–164.