

THE
GEOLOGICAL MAGAZINE

OR,

Monthly Journal of Geology:

WITH WHICH IS INCORPORATED

“THE GEOLOGIST.”

NOS. DXXXV TO DXLVI.

GEOLOGY DEPARTMENT

BIRKBECK COLLEGE

PRINTED BY

HENRY WOODWARD, LL.D., F.R.S., F.G.S., F.R.M.S.,

LATE OF THE BRITISH MUSEUM OF NATURAL HISTORY; PRESIDENT OF THE
PALÆONTOGRAPHICAL SOCIETY; ETC., ETC.

ASSISTED BY

PROFESSOR J. W. GREGORY, D.Sc., F.R.S., F.G.S.,

DR. GEORGE J. HINDE, F.R.S., F.G.S.,

SIR THOS. H. HOLLAND, K.C.I.E., A.R.C.S., F.R.S.,

PROFESSOR W. W. WATTS, Sc.D., M.Sc., F.R.S., V.P.G.S.,

DR. ARTHUR SMITH WOODWARD, F.R.S., F.L.S., Sec. G. Soc.,

AND

HORACE B. WOODWARD, F.R.S., F.G.S.

NEW SERIES. DECADE V. VOL. VI.

JANUARY—DECEMBER, 1909.

LONDON:

DULAU & CO., LTD., 37 SOHO SQUARE, W.

1909.

HERTFORD :

PRINTED BY STEPHEN AUSTIN AND SONS, LTD.

LIST OF PLATES.

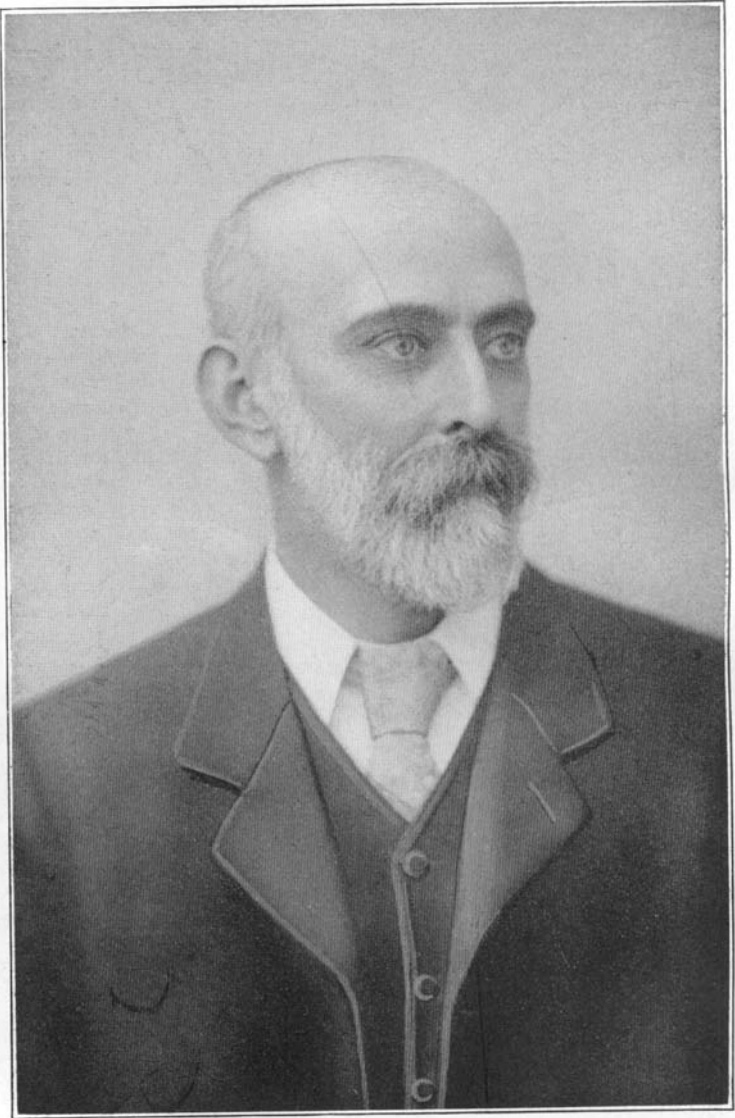
PLATE	FACING PAGE
I. Portrait of J. J. Harris Teall, M.A., D.Sc., F.R.S., F.G.S.	1
II. <i>Puzosia curvatusilecata</i> , sp. nov., Turonian, Marlow, Bucks	68
III. <i>Phacops (Trimerocephalus) pentops</i> , sp. nov., Devonian, Cornwall ; <i>Allorisma concinna</i> , sp. nov.	97
IV. Wind-cut pebbles from Permian of Elgin, Moray, and North Island, New Zealand	103
V. Portrait of the late G. H. Kinahan, M.R.I.A.	142
VI. Dental apparatus of <i>Discoidea cylindrica</i> (Lamk.)	152
VII. Trilobites from Devon and Cornwall	204
VIII. <i>Tetracrinus (?) felix</i> , sp. nov.	209
IX. Portrait of R. H. Traquair, M.D., LL.D., F.R.S., V.P.R.S.E., F.G.S.	241
X. Microphotographs of Basic Plagioclase Felspars near Lennoxtown	251
XI. Microphotographs of Basic Plagioclase Felspars, Kilpatrick Hills and Arthur's Seat	256
XII. Thin Sections of Granophyric Diabase from the Kilsyth-Croy District, Dumbartonshire	309
XIII. <i>Pleuropholis lævissima</i> , Egerton, Solenhofen, Bavaria	310
XIV. New Chalk Bryozoa (Polyzoa)	338
XV. The Tarntaler Köpfe	340
XVI. The ridge of the Nederer ; Reckner (Serpentine), Kahlewand (Dolomite)	342
XVII. The scree-cone (Issl) under the Lower Tarntal ; Head of the Lower Tarntal	344
XVIII. Lake, lower end of the Upper Tarntal ; Ridge north of the Mieselkopf	346
XIX. Sketch-map of Egypt	353
XX. Nubian Sandstone Fossils from Egypt	388
XXI. <i>Inoceramus Balli</i> , sp. nov., from the Nubian Sandstone of Egypt .	392
XXII. Chalk Bryozoa (Polyzoa)	398
XXIII. Chalk Bryozoa (Polyzoa)	400
XXIV. Pumices and Pumiceous Scoria from explosive eruptions, Monte Somma and Vesuvius	440

PLATE		FACING PAGE
XXV.	Pumices and Pumiceous Scoria from explosive eruptions, Monte Somma and Vesuvius	442
XXVI.	Cephalopods from the Tarntal Köpfe, in Tyrol	446
XXVII.	Sections of the Orange Grove Granites	554
XXVIII.	<i>Bothrodendron</i> ; <i>Hastimima</i>	485
XXIX.	View of mouth of the Aberedw Valley	491
XXX.	Portrait of William Boyd Dawkins, M.A., D.Sc., F.R.S., F.S.A., F.G.S.	529
XXXI.	Palæolithic Flint Implement from the Cambridgeshire Gravels, near Hildersham	536

LIST OF ILLUSTRATIONS IN THE TEXT.

	PAGE
Cephalic shield or carapace of <i>Limulus Woodwardi</i> , Watson, sp. nov.	15
Sketch-map showing Pulau Ubin and Changi, Singapore	18
Dyke-like mass of enstatite-vogesite in the hornblende-granite of Pulau Ubin, Singapore	20
Map showing distribution of erratics in neighbourhood of essexite intrusion	27, 29
Section across the Hill of Beath near Dunfermline, Fife	57
<i>Cricetus vulgaris Runtonensis</i> , n.subsp., Norfolk Forest Bed	111
Map showing distribution of land and water in the Atlantic region during early Devonian times	147
Sketch-map showing probable directions of the sediment-bearing currents in Bunter times	163
Microscopic section of corundum-bearing rock	166
<i>Amphibamus grandiceps</i> , Cope	218
Section across the Bovey Basin through Heathfield	260
Map, North-Eastern Soudan	267
The Loop of <i>Dielasma</i> (seven figures)	273
Diagram of borings in Derbyshire and Notts Coal-field	290, 292
Sketch-map showing position of borings in Derbyshire and Notts Coal-field	294
Diagrammatic Section across the Kilsyth-Croy Area	301
Map of the vicinity of Port Sudan	312
<i>Homalostega anglica</i>	337
Diagram illustrating the section of the Tarntal Mass	339
Sketch-map of district between Tarntaler Köpfe and Matrei	341
Mandible of <i>Tetrabelodon dinotherioides</i> , sp. nov., Andrews	348
Sketch to illustrate a common mode of occurrence of 'Laterite'	350
<i>Myotragus balearicus</i> , gen. et sp. nov.	386, 387
Profile of skull of <i>Tapinocephalus atherstoni</i> , Owen	401
Palatal aspect of skull of <i>Tapinocephalus atherstoni</i> , Owen	402
Key Map showing position of Birch Tor, Haytor, etc.	403
Geological Map of Birch Tor Mining District, Dartmoor	404
Microphotograph of Specular Iron-Tinstone	406
Diagram illustrating structure of magnetic iron-ore deposits at Haytor	408

	PAGE
Diagram showing theoretical shells of contraction, compression, and fissuring on the earth's crust by process of cooling	436
Sketch-map showing course of pipe-line across the 'Permian' beds between Hagley and Frankley	448
Sketch-map showing <i>Spirorbis</i> -limestone outcrop in Keele Beds, Warwickshire	453
Portrait of Professor T. Rupert Jones, F.R.S., F.G.S.	481
Body-segments of <i>Eurypterus hibernicus</i> , Baily	487
Diagrammatic sketch of country around Aberedw	492
Sketch-map showing river-distribution in Mid-South Wales	510



Yours faithfully
J. G. S. Seal