

ARTICLES

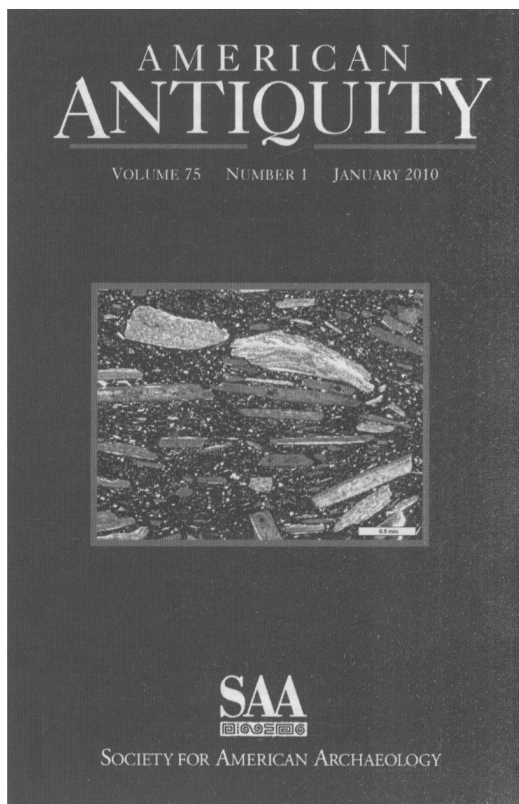
- 3 Community, Identity, and Social Memory at Moundville
Gregory D. Wilson
- 19 Costly Signaling and Gendered Social Strategies among Slaves in the Eighteenth-Century Chesapeake: An Archaeological Perspective
Jillian E. Galle
- 44 Archaeological Indices of Resistance: Diversity in the Removal Period Potawatomi of the Western Great Lakes
Mark R. Schurr
- 61 Ethnographic and Modeled Costs of Long-Distance, Big-Game Hunting
Deanna N. Grimstead
- 81 Clovis and Western Stemmed: Population Migration and the Meeting of Two Technologies in the Intermountain West
Charlotte Beck and George T. Jones
- 117 Northernmost Precontact Maize in North America
Matthew Boyd and Clarence Surette

REPORTS

- 134 Determining Provenance of Shell-Tempered Pottery from the Central Plains Using Petrography and Oxidation Analysis
Donna C. Roper, Richard L. Josephs, and Margaret E. Beck
- 158 Contextual Incongruities, Statistical Outliers, and Anomalies: Targeting Inconspicuous Occupational Events
Deni J. Seymour
- 177 Spatial and Temporal Variability in Chert Exploitation on Santa Cruz Island, California
Jennifer E. Perry and Christopher S. Jazwa

REVIEWS

- 199 Handbook of Archaeological Theories, edited by R. Alexander Bentley, Herbert D. G. Maschner, and Christopher Chippindale
Pedro Paulo A. Funari



NOTICE TO AUTHORS

Latin American Antiquity publishes original papers on the archaeology, prehistory, and ethnohistory of Latin America, i.e., Mesoamerica, Central America, and South America, together with culturally affiliated adjacent regions. Papers may also treat more general theoretical and methodological issues with relevance to Latin America. Authors submit manuscripts to the editor for consideration as ARTICLES or REPORTS in English, Spanish, or Portuguese. Authors are required to submit manuscripts electronically through Editorial Manager® (<http://www.editorialmanager.com/laq>). Detailed information on policy, style, and technical matters of manuscript preparation is given in English and in Spanish in the "Editorial Policy, Information for Authors, and Style Guide for *American Antiquity* and *Latin American Antiquity*," available through the World Wide Web at <http://www.saa.org/Publications/StyleGuide/styframe.html>. For additional information, updates, or clarification, consult the managing editor at the SAA office in Washington, D.C.

BOARD OF DIRECTORS OF THE SOCIETY FOR AMERICAN ARCHAEOLOGY

Officers

President: MARGARET W. CONKEY, University of California, Department of Anthropology, MC #3710, Berkeley, CA 94720-3710

Secretary: BARBARA J. MILLS, University of Arizona, Department Of Anthropology, Haury Building, Tucson, AZ 85721-0001

Treasurer: PAUL D. WELCH, RPA, Southern Illinois University, Dept of Anthropology MC 4502, 3521 Faner Hall, Carbondale, IL 62901-4328

Treasurer-Elect: CHRISTOPHER D. DORE, Ph.D, RPA, The Louis Berger Group, Inc., 12596 West Bayaud Ave, Suite 201, Lakewood, CO 80228

Board Members-at-Large

BARBARA ARROYO, Museo Popol Vuh Universidad Francisco Marroquin, GUA006, P.O. Box 02-5368, Miami, FL 33102

CORY BRETERNITZ, RPA, Paleowest, 649 N. 3rd Ave, Phoenix, AZ 85003-1522

PATRICIA L. CROWN, University of New Mexico, Department of Anthropology, MSC01 1040, Albuquerque, NM 87131-0001

JONATHAN DRIVER, Simon Fraser University, Department Of Archaeology, 8888 University Drive, Burnaby, BC V5A -1S6, Canada

KAREN S. HARTGEN, RPA, Hartgen Archeological Associates, Inc., 1744 Washington Ave, Rensselaer, NY 12144

KATHRYN KAMP, Grinnell College, Dept of Anthropology, 1118 Park Street, Grinnell, IA, 50112-1643

Ex-Officio Board Member

TOBI A. BRIMSEK, Executive Director, Society for American Archaeology, 900 Second St. NE, Suite 12, Washington, DC 20002-3560

ARTICLES

- 3 A Mito-Style Structure at Chavín de Huántar: Dating and Implications
Daniel A. Contreras
- 22 Craft Specialists at Moche: Organization, Affiliations, and Identities
Hélène Bernier
- 44 Childhood Lost: Abductions, Sacrifice, and Trophy Heads of Children in the Wari Empire of the Ancient Andes
Tiffany A. Tung and Kelly J. Knudson
- 67 Continuity and Transformation during the Terminal Middle Horizon (A.D. 950–1150): A Bioarchaeological Assessment of Tumilaca Origins within the Middle Moquegua Valley, Peru
Richard C. Sutter and Nicola Sharratt
- 87 Cultural Transformations of the Chanka Homeland (Andahuaylas, Peru) during the Late Intermediate Period (A.D. 1000–1400)
Brian S. Bauer and Lucas C. Kellett

On the cover: Objects produced by Moche urban artisans: feminine figurines, warrior effigy whistle, pendants, and stirrup-spout vessel in the shape of a man showing a textile. From "Craft Specialists at Moche: Organization, Affiliations, and Identities," by Hélène Bernier, p. 32.

⊗ The paper used in this publication meets the requirements of ANSI/NISO Z39.48-1992 (Permanence of Paper).