



Article

Markwelchite, TlPbSbS_3 , a new Tl–Pb sulfosalt from the hydrothermal deposit of Jas Roux, Hautes-Alpes, France

Luca Bindi¹ , Cristian Biagioni² , Hans-Jürgen Förster³ and Holger Georg Adelmann⁴

¹Dipartimento di Scienze della Terra, Università degli Studi di Firenze, Via G. La Pira, 4, I-50121 Firenze, Italy; ²Dipartimento di Scienze della Terra, Università di Pisa, Via Santa Maria, 53, I-56126 Pisa, Italy; ³Helmholtz Centre Potsdam German Research Centre for Geosciences GFZ, D-14473 Potsdam, Germany; and ⁴Faculty of Geosciences, Institute of Geology, Mineralogy and Geophysics, 44780 Bochum, Germany

Abstract

Markwelchite, ideally TlPbSbS_3 , is a new mineral from the hydrothermal deposit of Jas Roux, Hautes-Alpes, France. It occurs as a black anhedral crystal associated closely with protochabournéite. Microhardness measurements (VHN_{15}) gave a mean value of 197 kg/mm^2 corresponding to a Mohs hardness of $\sim 3\text{--}4$. In plane-polarised incident light, markwelchite is grey in colour. Under crossed polars, it is distinctly anisotropic with greyish white to bluish rotation tints, with bright red internal reflections. Reflectance percentages (R_{\min} and R_{\max}) are: 28.5, 31.5 (471.1 nm); 28.3, 30.7 (548.3 nm); 27.9, 30.3 (586.6 nm); and 27.6, 29.8 (652.3 nm). The mean of 5 electron microprobe spot analyses gave Tl 34.67(45), Pb 31.86(25), Sb 15.06(15), As 2.37(5), S 15.35(20), total 99.31 wt.%, corresponding, on the basis of a total of 6 atoms per formula unit and structural results, to $\text{Tl}_{1.063}\text{Pb}_{0.964}(\text{Sb}_{0.775}\text{As}_{0.198})_{\Sigma 0.973}\text{S}_{3.000}$. Single-crystal X-ray diffraction studies revealed that markwelchite is isotypic with richardsollyite, TlPbAsS_3 . It is monoclinic, space group $P2_1/c$, with the following unit-cell parameters: $a = 8.9144(3)$, $b = 8.4513(3)$, $c = 8.6511(3)$ Å, $\beta = 108.723(4)^\circ$, $V = 617.27(4)$ Å³ and $Z = 4$. The five strongest observed powder-diffraction lines [d in Å (I_{rel})(hkl)] are: 3.88 (100)($\bar{2}11$); 3.78 (90)(210); 3.29 (90)(102); 2.73 (85)($\bar{1}13$); and 2.93 (75)(022). The crystal structure can be described as formed by (100) [$\text{Me}_2(\text{SbS}_3)$][−] layers sandwiching the Me_1^+ cations. The Me_1 site has a seven-fold coordination, whereas the Me_2 site has an 6+2 coordination corresponding to a distorted, bicapped trigonal prismatic coordination, and the Sb site displays a trigonal pyramidal coordination with three S atoms and Sb at the apex.

The name markwelchite honours Dr Mark D. Welch of the Natural History Museum, London, UK.

The new mineral has been approved by the Commission on New Minerals, Nomenclature and Classification of the International Mineralogical Association (IMA2024–001). A discussion on the relationships between markwelchite and synthetic TlPbSbS_3 is also provided.

Keywords: markwelchite; TlPbSbS_3 ; new mineral; sulfosalt; thallium; richardsollyite; Jas Roux; France

(Received 7 April 2024; accepted 9 May 2024; Accepted Manuscript published online: 24 May 2024)

Introduction

During a mineralogical study of newly collected samples from the Tl-rich hydrothermal mineralization of Jas Roux, La Chapelle-en-Valgaudemar, Gap, Hautes-Alpes, Provence-Alpes-Côte d'Azur, France (44°44'45"N, 6°19'18"E), a new Tl–Pb mineral was discovered. Details of the geological background of the Jas Roux deposit are given in Johan and Mantiene (2000). The Tl–Hg–Sb–As mineralisation occurs within baryte layers mainly hosted in metadolostone and marbles. Johan and Mantiene (2000) gave a full account of the mineralogy of this deposit. Later, Favreau *et al.* (2011) reported an update, citing a total of 57 different mineral species. Jas Roux is known for the occurrence of ten Tl-mineral species,

among which eight have their type locality there: chabournéite (Johan *et al.*, 1981), dewitite (Topa *et al.*, 2020), écrinsite (Topa *et al.*, 2017), ginelfite (Biagioni *et al.*, 2023), jasrouxite (Topa *et al.*, 2013), pierrotite (Guillemin *et al.*, 1970), routhierite (Johan *et al.*, 1974) and vallouiseite (Topa *et al.*, 2023a). Other species first discovered at Jas Roux are laffittite (Johan *et al.*, 1974) and montpelvouxite (Topa *et al.*, 2023b).

This study reports the description of the new mineral markwelchite, together with data on its crystal structure. The new mineral has been approved by the Commission on New Minerals, Nomenclature and Classification of the International Mineralogical Association (IMA2024–001, Bindi *et al.*, 2024). Holotype material is deposited in the Mineralogical Collections of the Natural History Museum of the University of Florence, Italy, under catalogue number 3739/I. Its mineral abbreviation is Mrw.

The name markwelchite honours Dr Mark D. Welch (b. 1960) of the Natural History Museum, London, United Kingdom. Dr Welch is a well-known mineralogical crystallographer who has researched a wide range of minerals, many of which have

Corresponding author: Luca Bindi; Email: luca.bindi@unifi.it

Associate Editor: František Laufek

Cite this article: Bindi L., Biagioni C., Förster H.-J. and Adelmann H.G. (2024) Markwelchite, TlPbSbS_3 , a new Tl–Pb sulfosalt from the hydrothermal deposit of Jas Roux, Hautes-Alpes, France. *Mineralogical Magazine* 1–7. <https://doi.org/10.1180/mgm.2024.43>

© The Author(s), 2024. Published by Cambridge University Press on behalf of The Mineralogical Society of the United Kingdom and Ireland. This is an Open Access article, distributed under the terms of the Creative Commons Attribution licence (<http://creativecommons.org/licenses/by/4.0/>), which permits unrestricted re-use, distribution and reproduction, provided the original article is properly cited.

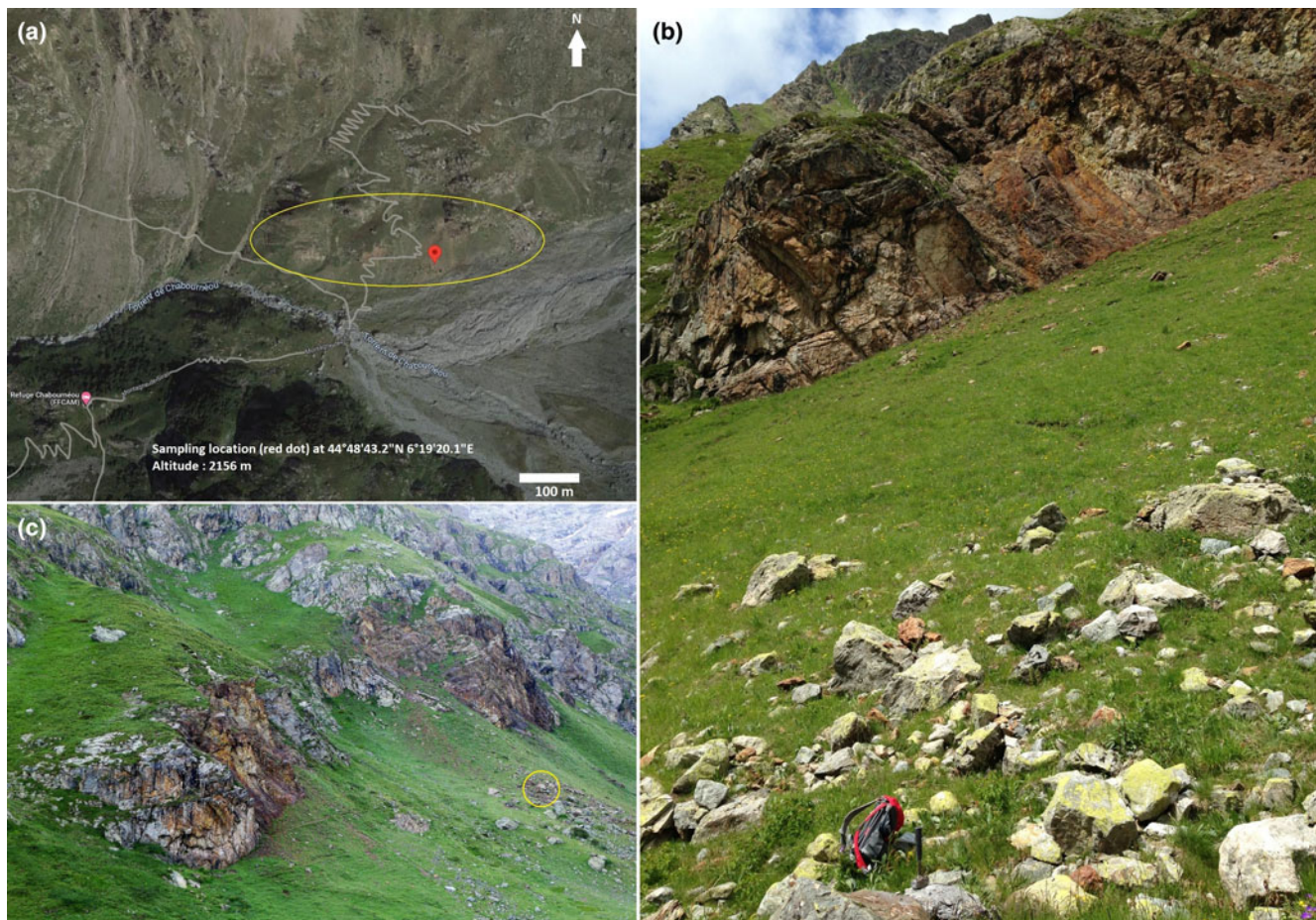


Figure 1. (a) The location where the sample containing markwelchite was collected near Jas Roux, La Chapelle-en-Valgaudemar, Gap, Hautes-Alpes, Provence-Alpes-Côte d'Azur, France ($44^{\circ}48'43.2''\text{N}$, $6^{\circ}19'20.1''\text{E}$). (b) Photograph indicating the sampling site below the cliff, looking to the East. (c) Photograph showing the sampling site by looking W towards the westernmost cliff (taken in 2014).

complex structures and unusual crystal chemistry. In particular, he is well-known for amphiboles, high-pressure studies and recently tetrahedrites. He was Principal Editor for the *Mineralogical Magazine* from 2006–2011.

Material studied

The geological outcrop, where the sample containing markwelchite was discovered, is located on the north flank of the Torrent de Chabournéou, a small alpine valley at ~ 2100 m of altitude in the Les Écrins National Park, Hautes-Alpes, France. Jas Roux is a hydrothermal stratiform deposit hosted in dolomitic metalimestones of Triassic age and appears as several sedimentary lenses embedded in the Pigeonnier anatexites. These lenses protrude and form small cliffs parallel to the valley (Boulliard *et al.*, 2010). Samples from this study consist of boulders weathered out of the cliffs which contained small veinlets of primary sulfosalts accompanied by a variety of secondary minerals.

The sampling site is at $44^{\circ}48'43.2''\text{N}$, $6^{\circ}19'20.1''\text{E}$ (Fig. 1). It is at the top of a boulder heap below the middle part of the Jas Roux cliffs and is located at an altitude of ~ 2156 m. The yellow areas outline the Jas Roux cliffs (Fig. 1). Sampling was done by one of us (HGA) in July 2014 with PN authorisation no. 280/2014.

Markwelchite is associated with stibnite, twinnite, guettardite, pierrotite, realgar and protochabournéite (Fig. 2), the latter was verified by single-crystal X-ray diffraction.

The formation of markwelchite is linked to the activity of Tl–Pb–Sb-rich fluids during the hydrothermal evolution of the Jas Roux deposit.

Physical and optical properties

Markwelchite occurs as black anhedral crystals up to $40\ \mu\text{m}$ in size and shows a black streak. The mineral is opaque in transmitted light and exhibits a metallic lustre. No cleavage is observed, and the fracture is uneven. The density could not be measured owing to the small grain size. The calculated density (for $Z = 4$) for the empirical formula and unit-cell parameters obtained by single-crystal X-ray diffraction (see below) is $6.696\ \text{g}/\text{cm}^3$. Five micro-indentation measurements carried out with a VHN load of $15\ \text{g}$ give a mean value of $197\ \text{kg}/\text{mm}^2$ (range: 188–218), corresponding to a Mohs hardness of $\sim 3\text{--}4$.

In plane-polarised incident light, markwelchite is grey in colour. Under crossed polars, it is distinctly anisotropic, with greyish white to bluish rotation tints and bright red internal reflections. Reflectance was measured in air using a Zeiss MPM-200 microphotometer equipped with a MSP-20 system

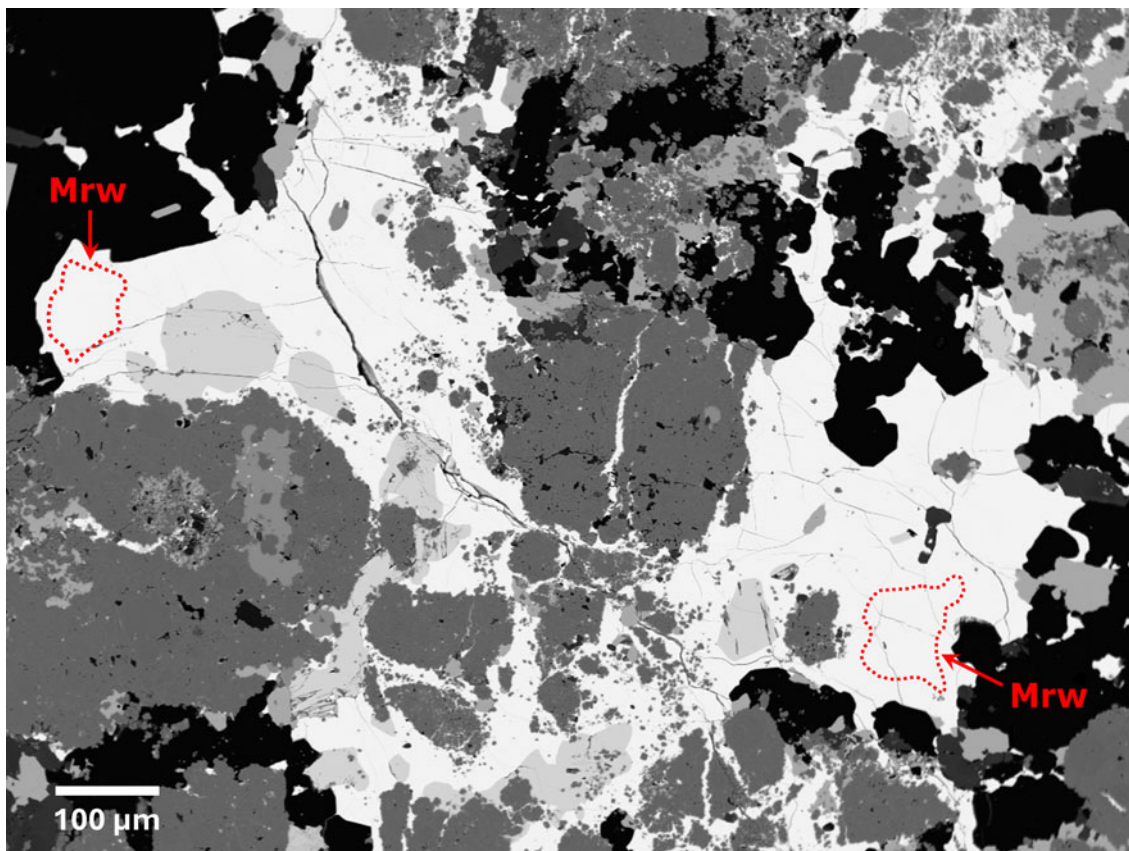


Figure 2. Back-scattered electron image of the markwelchite-containing polished section. Small grains of markwelchite (Mrw) occur in the brighter regions, closely associated with protochabournéite. Holotype specimen 3739/l.

processor on a Zeiss Axioplan ore microscope. The filament temperature was ~ 3350 K. Readings were taken for specimen and standard (SiC) maintained under the same focus conditions. Reflectance percentages (R_{\min} and R_{\max}) for the four Commission on Ore Mineralogy (COM) wavelengths are: 28.5, 31.5 (471.1 nm), 28.3, 30.7 (548.3 nm), 27.9, 30.3 (586.6 nm) and 27.6, 29.8 (652.3 nm).

Chemical composition

A preliminary chemical analysis (energy dispersive spectroscopy) of the crystal used for the structural study did not indicate the presence of elements ($Z > 9$) other than Tl, Pb, Sb, As and S. Quantitative analyses (5 spots) were performed using a JEOL 8200 microprobe using wavelength dispersive spectroscopy (WDS, 20 kV, 40 nA, focussed beam (1 μm), counting times

20 s for peak and 10 s for background). For the WDS analyses, the following lines were used: $\text{PbM}\alpha$, $\text{TlM}\alpha$, $\text{SbL}\alpha$, $\text{AsL}\alpha$ and $\text{SK}\alpha$. Iron, Cu, Zn, Ag and Se were sought but found to be below the detection limit (0.02 wt.%). The crystal fragment was homogeneous within analytical error. Chemical data and analytical details are given in Table 1.

The empirical chemical formula, based on 6 atoms per formula unit and structure (see below) is $\text{Tl}_{1.063}\text{Pb}_{0.964}(\text{Sb}_{0.775}\text{As}_{0.198})_{\Sigma 0.973}\text{S}_{3.000}$. The simplified formula is $\text{TlPb}(\text{Sb,As})\text{S}_3$. The ideal chemical formula is TlPbSbS_3 , which requires Tl 32.47, Pb 32.91, Sb 19.34, S 15.28, total 100.00 wt.%.

X-ray diffraction studies

Single-crystal X-ray studies were conducted using a Bruker D8 Venture diffractometer equipped with a Photon III detector using graphite-monochromatised $\text{MoK}\alpha$ radiation ($\lambda = 0.71073$ Å). Markwelchite is monoclinic, with the following unit-cell parameters: $a = 8.9144(3)$, $b = 8.4513(3)$, $c = 8.6511(3)$ Å, $\beta = 108.723(4)^\circ$, $V = 617.27(4)$ Å³ and $Z = 4$.

The powder X-ray diffraction study (PXRD) was carried out using the same instrument but with $\text{CuK}\alpha$ radiation ($\lambda = 1.5418$ Å). The diffraction rings from markwelchite were converted into a conventional PXRD pattern. The crystal-to-detector distance was 7 cm. Observed and calculated powder X-ray diffraction data for markwelchite are given in Table 2. The unit-cell parameters from the PXRD data are: $a = 8.9057(9)$, $b = 8.4376(8)$, $c = 8.6355(10)$ Å, $\beta = 108.646(8)^\circ$ and $V = 614.83(7)$ Å³.

Table 1. Results of electron microprobe analyses (in elemental wt.%) of markwelchite.

	Mean	Range	S.D.*	Probe standard
Tl	34.67	33.55–35.19	0.45	Tl metal
Pb	31.86	30.95–32.27	0.25	Pb metal
Sb	15.06	14.69–15.20	0.15	Sb metal
As	2.37	2.19–2.51	0.05	As metal
S	15.35	15.09–15.88	0.20	Pb metal
Total	99.31			

*S.D. – standard deviation

Table 2. Observed and calculated powder X-ray diffraction data (on the basis of the structural model given in Table 4) for markwelchite.*

d_{calc}	l_{calc}	d_{obs}	l_{obs}	h	k	l	d_{calc}	l_{calc}	d_{obs}	l_{obs}	h	k	l	d_{calc}	l_{calc}	d_{obs}	l_{obs}	h	k	l
4.2619	35			$\bar{1}$	0	2	2.1883	6			2	2	2	1.6806	8			$\bar{1}$	1	5
4.2213	9			2	0	0	2.1554	4			$\bar{1}$	0	4	1.6711	14			0	4	3
3.8792	100	3.88	100	$\bar{2}$	1	1	2.1310	12			$\bar{2}$	0	4	1.6706	4			4	0	2
3.8054	37	3.80	40	$\bar{1}$	1	2	2.0764	13			1	2	3	1.6701	9			$\bar{2}$	4	3
3.7788	56			1	2	0	2.0725	18			$\bar{3}$	2	3	1.6567	5			0	3	4
3.7764	94	3.78	90	2	1	0	2.0663	11			$\bar{2}$	1	4	1.6469	8			2	0	4
3.7556	29			0	2	1	2.0496	11			1	4	0	1.6447	14			$\bar{1}$	5	1
3.6864	8			0	1	2	2.0483	5			0	0	4	1.6433	5			$\bar{4}$	2	4
3.6358	47	3.64	50	$\bar{1}$	2	1	2.0478	17			4	1	0	1.6238	21			$\bar{3}$	3	4
3.5673	8			$\bar{2}$	0	2	2.0259	4			$\bar{1}$	4	1	1.6165	6			2	1	4
3.2937	97	3.29	90	1	0	2	2.0151	5			$\bar{1}$	3	3	1.6087	7			0	1	5
3.2580	8			1	2	1	1.9910	18			3	3	0	1.5978	5			$\bar{2}$	2	5
3.0689	33	3.06	30	1	1	2	1.9872	5			$\bar{3}$	0	4	1.5951	8			3	4	1
3.0007	33	2.99	40	$\bar{1}$	2	2	1.9782	20	1.98	20	3	1	2	1.5814	6			3	2	3
2.9865	9			2	2	0	1.9678	17			$\bar{4}$	2	1	1.5780	4			$\bar{5}$	2	3
2.9413	87	2.93	75	0	2	2	1.9528	7			1	4	1	1.5680	9			5	2	0
2.8025	55	2.79	50	$\bar{3}$	1	1	1.9396	7			$\bar{4}$	2	2	1.5477	7			$\bar{5}$	1	4
2.7292	94	2.73	85	$\bar{1}$	1	3	1.9201	7			$\bar{1}$	2	4	1.5345	5			2	2	4
2.7259	19			$\bar{2}$	2	2	1.9019	25	1.90	30	$\bar{2}$	4	1	1.5278	6			0	2	5
2.6723	64	2.67	60	1	3	0	1.8938	24			2	3	2	1.5082	5			2	5	1
2.6701	21			3	1	0	1.8882	8			4	2	0	1.4648	5			$\bar{1}$	3	5
2.6640	27			0	3	1	1.8778	6			0	4	2	1.4629	7			$\bar{4}$	2	5
2.6337	78	2.63	70	$\bar{3}$	1	2	1.8554	14			4	1	1	1.4617	5			5	2	1
2.6209	75	2.61	60	2	2	1	1.8432	8			0	2	4	1.4588	9			2	4	3
2.6202	14			$\bar{1}$	3	1	1.8152	17			1	1	4	1.4568	8			$\bar{4}$	4	3
2.5950	21			$\bar{2}$	1	3	1.7837	13			$\bar{4}$	0	4	1.4483	6			5	3	0
2.5580	5			2	0	2	1.7747	18			$\bar{5}$	0	2	1.4418	7			$\bar{2}$	0	6
2.4677	17			1	3	1	1.7452	7			$\bar{4}$	1	4	1.4375	4			$\bar{4}$	1	3
2.4483	4			2	1	2	1.7256	15			$\bar{4}$	3	2	1.4373	8			0	5	3
2.3501	8			$\bar{1}$	3	2	1.7218	15			$\bar{3}$	4	1	1.4369	5			4	3	2
2.3376	33	2.34	25	3	1	1	1.7043	6			$\bar{1}$	4	3	1.4366	8			$\bar{2}$	5	3
2.3212	7			0	3	2	1.7013	8			1	2	4	1.4135	6			4	4	1
2.2937	11			0	2	3								1.4071	10			6	0	0
2.2109	16			$\bar{2}$	3	2								1.3881	5			3	5	1

*Only reflections with $l_{\text{calc}} > 4$ are listed. The five strongest reflections are given in bold.**Table 3.** Crystal and experimental data for markwelchite.

Crystal data	
Crystal size (mm)	0.025 × 0.020 × 0.018
Cell setting, space group	Monoclinic, $P2_1/c$
a (Å)	8.9144(3)
b (Å)	8.4513(3)
c (Å)	8.6511(3)
β (°)	108.723(3)
V (Å ³)	617.27(4)
Z	4
Data collection and refinement	
Radiation, wavelength (Å)	MoK α , $\lambda = 0.71073$
Temperature (K)	293
$2\theta_{\text{max}}$ (°)	60.06
Measured reflections	16162
Unique reflections	1803
Reflections with $F_o > 4\sigma(F_o)$	1525
R_{int}	0.0327
R_{σ}	0.0319
Range of h, k, l	$-12 \leq h \leq 12$ $-11 \leq k \leq 11$ $-12 \leq l \leq 12$
$R [F_o > 4\sigma(F_o)]$	0.0225
R (all data)	0.0245
wR (on F^2)	0.0485
GoF	1.008
Number of least-squares parameters	58
Maximum and minimum residual peak (e Å ⁻³)	5.04 (at 0.95 Å from Me2) −0.68 (at 1.17 Å from Me2)

Crystal structure refinement

Single-crystal X-ray diffraction intensity data were integrated and corrected for standard Lorentz-polarisation factors and absorption with APEX3 (Bruker, 2016). A total of 1803 unique reflections were collected. The statistical tests on the distribution of $|E|$ values ($|E^2 - 1| = 0.912$) indicated the presence of an inversion centre. Systematic absences agreed with the space group $P2_1/c$. Given the similarity of the unit-cell values, space group, and general stoichiometry, the structure was refined using the atomic coordinates given for richardsollyite, TIPbAsS₃ (Meisser *et al.*, 2017), through *Shelxl-2014* (Sheldrick, 2015). Table 3 reports details of the selected crystal, data collection, and refinement.

In the crystal structure of markwelchite, similar to richardsollyite, there are three cation and three anion sites. Scattering curves for neutral atoms were taken from the *International Tables for Crystallography* (Wilson, 1992). Initially, owing to the similar scattering factors of Pb and Tl, only the scattering curve of the first was used. Consequently, the site occupation factor (s.o.f.) of the three independent cation sites were refined using the following curves: Pb vs □ (structural vacancy) for the Me1 and Me2 sites, and Sb vs □ for the Sb site. All the cation positions but Sb were found fully occupied and their s.o.f. were fixed to 1. The Sb site was subsequently refined using Sb vs As curves and gave a Sb_{0.805(11)}As_{0.195} site occupancy, which is in agreement with that obtained by electron microprobe (i.e., Sb_{0.78}As_{0.20}).

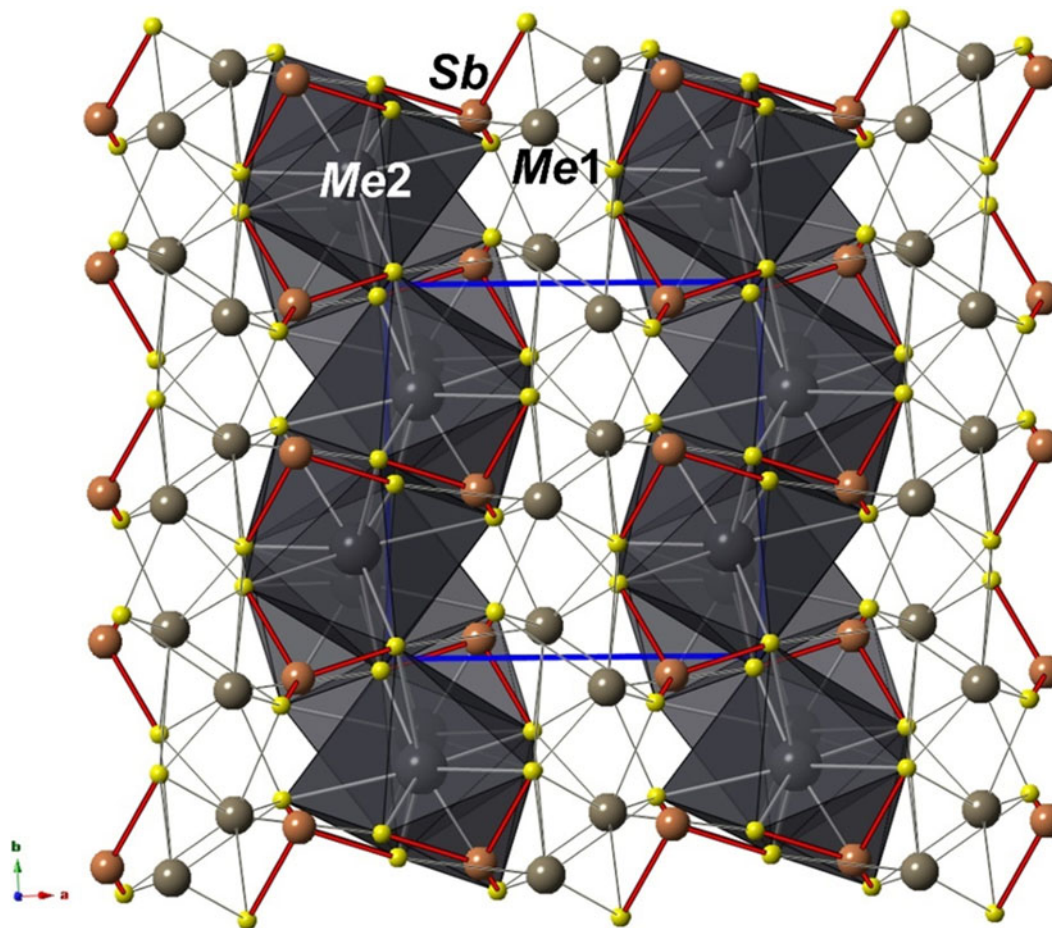


Figure 3. Crystal structure of markwelchite as seen down [001]. Circles: grey = Me1; orange = Sb; yellow = S. Me2-centred polyhedra are shown in dark grey. Drawn using *CrystalMaker*[®].

Discussion

Crystal structure

Markwelchite is isotypic with richardsollyite. The crystal structure of markwelchite can be described as formed by (100) $[Me_2(SbS_3)]^-$ layers sandwiching the Me1 cations (Fig. 3). The Me2 site has a seven-fold coordination, with an eighth ligand at 3.808(2) Å. The Me1 site has a 6+2 coordination (two ligands > 3.6 Å), corresponding to a distorted, bicapped trigonal prismatic coordination. Finally, the Sb site displays a trigonal pyramidal coordination with three S atoms and Sb at the apex.

However, some differences with respect to richardsollyite occur in the coordination of atoms hosted at the Me2 and Me1 sites. The average $\langle Me_2-S \rangle$ is 3.191 Å, with a corresponding bond-valence sum (BVS) of 1.49 valence units (vu), calculated using the bond parameters of Brese and O’Keeffe (1991) for the Pb–S bond, also considering the very long Me2–S3 bond [3.8077(18) Å]. In richardsollyite, this site has an average $\langle Pb-S \rangle$ distance of 3.122 Å, with distances ranging between 2.91 and 3.45 Å; the corresponding BVS is 1.85 vu. (Meisser *et al.*, 2017). Me1 is eight-fold coordinated, with an average $\langle Me_1-S \rangle$ distance of 3.298 Å; in richardsollyite this site is seven-fold coordinated, with average distance of 3.333 Å and a BVS of 0.98 vu (Meisser *et al.*, 2017). In markwelchite, the BVS, calculated using the value of 2.55 Å for Tl–S bonds (e.g. Biagioni and Moëlo, 2017), is 1.35 vu that could indicate a cross-

substitution $Tl^+ + Pb^{2+} = Pb^{2+} + Tl^+$ between Me1 and Me2. A possible fit would give $Me_2 = Pb_{0.55}Tl_{0.45}$ and $Me_1 = Tl_{0.55}Pb_{0.45}$, corresponding to mean formal charges of 1.55 and 1.45 vu, respectively. The disorder of Tl and Pb at the Me1 and Me2 sites is larger than that possibly occurring in richardsollyite, where a virtually ordered distribution of these two elements was reported (Meisser *et al.*, 2017). This is probably a consequence of the Sb-for-As replacement in markwelchite with respect to richardsollyite. Indeed, the Sb site has a site occupancy $(Sb_{0.80}As_{0.20})$, in accord with electron microprobe data; in richardsollyite this site was virtually As-pure (Meisser *et al.*, 2017). The occurrence of Sb may allow an increase in the size of the Me2 polyhedron, favouring the partial replacement of Pb^{2+} by Tl^+ (Fig. 4).

Structural and chemical information allow us to propose the idealised structural formula as $^{Me_1}(Tl_{0.55}Pb_{0.45})_{\Sigma 1.00}^{Me_2}(Pb_{0.55}Tl_{0.45})_{\Sigma 1.00}^{Sb}(Sb_{0.82}As_{0.18})_{\Sigma 1.00}S_3$.

Possible stacking faults cannot be excluded, and these could be responsible for the presence of the residual maxima in the difference-Fourier map around Me1 and Me2 (highest peak $5.04 e \text{ \AA}^{-3}$ at 0.95 Å from Me2).

Final atomic coordinates and equivalent isotropic displacement parameters are listed in Table 4, whereas selected bond distances and bond valences are provided in Tables 5 and 6, respectively. The crystallographic information file has been deposited with the Principal Editor of *Mineralogical Magazine* and is available as Supplementary material (see below).

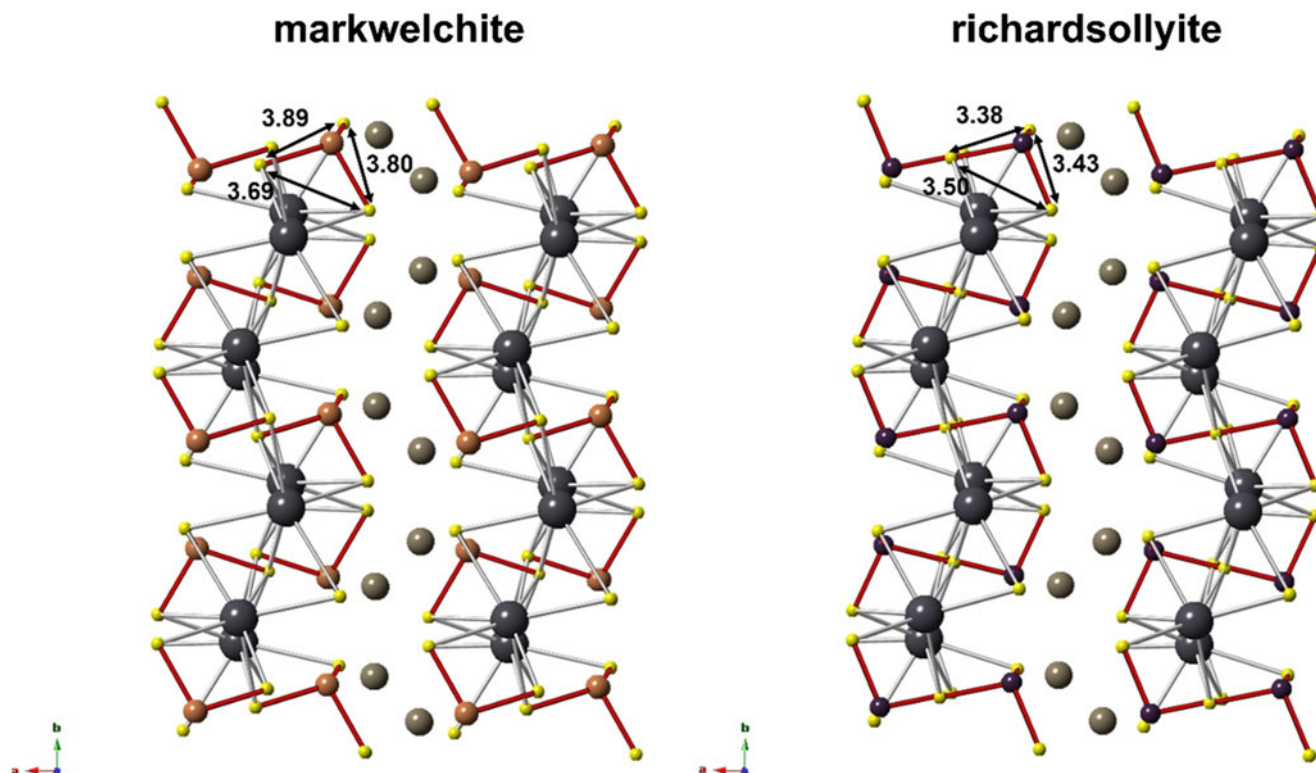


Figure 4. Comparison between the crystal structures of markwelchite (left) and richardsollyite (right). The S–S distances (in Å) forming the base of the trigonal pyramids having Sb and As at their vertex are shown.

Table 4. Atomic coordinates and equivalent isotropic displacement parameters (\AA^2) for markwelchite.

Site	x/a	y/b	z/c	U_{eq}
Me1	0.41633(3)	0.41732(3)	0.78400(3)	0.03302(10)
Me2	0.91462(3)	0.29497(3)	0.98226(3)	0.02430(9)
Sb	0.75784(5)	0.55110(5)	0.62968(5)	0.01872(12)
S1	0.7130(2)	0.6230(2)	0.8803(2)	0.0215(3)
S2	0.0212(2)	0.4672(2)	0.6847(2)	0.0206(3)
S3	0.6158(2)	0.3039(2)	0.5538(2)	0.0283(4)

Table 5. Selected bond distances (\AA) for markwelchite.

Me1–S1	3.049(2)	Me2–S3	3.040(2)	Sb–S1	2.405(2)
Me1–S1	2.913(2)	Me2–S1	3.222(2)	Sb–S2	2.350(2)
Me1–S3	3.073(2)	Me2–S2	2.795(2)	Sb–S3	2.421(2)
Me1–S3	3.213(2)	Me2–S1	3.267(2)		
Me1–S2	3.374(2)	Me2–S2	3.259(2)		
Me1–S1	3.469(2)	Me2–S2	3.349(2)		
Me1–S3	3.604(2)	Me2–S2	3.407(2)		
Me1–S3	3.692(2)	Me2–S3	3.808(2)		

Relation to other species

Markwelchite is the Sb-analogue of richardsollyite, TlPbAsS_3 , and is isostructural with three synthetic compounds, i.e. KEuAsS_3 , RbEuAsS_3 and CsEuAsS_3 (Bera and Kanatzidis, 2008).

Synthetic TlPbSbS_3 shows two polymorphs. The high-temperature one is stable over 620 K and has a structure of TII type (orthorhombic $Cmcm$) with a disorder of cations occupying the same structural site (crystal structure determined from single-crystal X-ray data by Balić Žunić *et al.*, 1992). In the low-temperature

Table 6. Bond valences (in valence units, vu) according to the parameters given by Brese and O’Keeffe (1991).

	Me1	Me2	Sb	Σ anions
S1	0.38	0.16		
	0.26	0.14	1.04	2.06
	0.08			
S2		0.52		
	0.11	0.15	1.21	2.21
		0.12		
		0.10		
S3	0.24			
	0.17	0.27	0.99	1.81
	0.06	0.03		
	0.05			
Σ cations	1.35	1.49	3.24	

Note: the bond parameters of Pb–S and Tl–S bonds were assumed as 2.55 Å. The site occupancy at the Sb site is ($\text{Sb}_{0.80}\text{As}_{0.20}$).

form the disorder of cations is retained although the symmetry is lowered to monoclinic, space group $P2_1/c$ (structure determination from powder X-ray data by Balić Žunić and Bente, 1995). This is mainly due to a side movement in the stacking of tightly bonded two-layer slabs. The structures of the two polymorphs are influenced by the activities of the lone electron pairs of the cations involved. The side movement in the stacking of tightly-bonded slabs in the low temperature polymorph is probably caused by cation repulsions upon decreasing the slab separation. The structural differences with respect to markwelchite are probably due to differences in the formation conditions (temperature, pressure or time).

To elucidate the structural evolution of markwelchite as a function of temperature, *in situ* low- and high-temperature single-crystal X-ray diffraction studies are planned, provided that more suitable fragments will become available.

Acknowledgements. The research was funded by MIUR-PRIN2017, project “TEOREM deciphering geological processes using Terrestrial and Extraterrestrial ORE Minerals”, prot. 2017AK8C32 (PI: Luca Bindi). We are grateful to the Parc National Les Écrins, France, for the permission to sample the site. Careful reviews by Tonci Balić-Žunić, Frantisek Laufek, Peter Leverett, Dan Topa and Federica Zaccarini are gratefully acknowledged.

Supplementary material. The supplementary material for this article can be found at <https://doi.org/10.1180/mgm.2024.43>.

Competing interests. The authors declare that there are no competing interests.

References

- Balić-Žunić T. and Bente K. (1995) The two polymorphs of TlPbSbS_3 and the structural relations of phases in the system TlSbS_2 – PbS . *Mineralogy and Petrology*, **53**, 265–276.
- Balić Žunić T., Bente K. and Edenharter A. (1992) Crystal structure of thallium lead antimony sulfide, $\text{Tl}_{0.333}\text{Pb}_{0.333}\text{Sb}_{0.333}\text{S}$. *Zeitschrift für Kristallographie*, **202**, 145–146.
- Bera T.K. and Kanatzidis M.G. (2008) AEuAsS_3 (A = Li, K, Rb, and Cs): new As^{3+} species from an arsenic-rich polysulfide flux. *Inorganic Chemistry*, **47**, 7068–7070.
- Biagioni C. and Moëlo Y. (2017) Lead-antimony sulfosalts from Tuscany (Italy). XVIII. New data on the crystal-chemistry of boscardinite. *Mineralogical Magazine*, **81**, 47–60.
- Biagioni C., Sejkora J., Moëlo Y., Favreau G., Bourgoin V., Boulliard J.-C., Bonaccorsi E., Mauro D., Musetti S., Pasero M., Perchiazzi N. and Uрманová J. (2023) Ginelfite, IMA 2022-110. CNMNC Newsletter 71. *Mineralogical Magazine*, **87**, 332–335.
- Bindi L., Biagioni C., Förster H.-J. and Adelman H.G. (2024) Markwelchite, IMA 2024-001. CNMNC Newsletter 79, *Mineralogical Magazine*, **88**, <https://doi.org/10.1180/mgm.2024.45>
- Boulliard J.C., Morin G., Bourgoin V. and Favreau G. (2010) *Minerals of Jas-Roux (France): an update*. 20th General Meeting of the IMA (IMA2010), Budapest, Hungary, August 21–27, CD of Abstracts, page 422.
- Breese N.E. and O’Keeffe M. (1991) Bond-valence parameters for solids. *Acta Crystallographica*, **B47**, 192–197.
- Bruker (2016) *APEX3, SAINT and SADABS*. Bruker AXS Inc., Madison, Wisconsin, USA.
- Favreau G., Bourgoin V. and Boulliard J.C. (2011) Jas Roux (Hautes-Alpes): un gisement exceptionnel à minéraux de thallium. *Le Cahier des Micromonteurs*, **113**, 1–92.
- Guillemin C., Johan Z., Laforêt C. and Picot P. (1970) La pierrotite $\text{Tl}_2(\text{Sb, As})_{10}\text{S}_{17}$ une nouvelle espèce minérale. *Bulletin de la Société Française de Minéralogie et de Cristallographie*, **93**, 66–71.
- Johan Z. and Mantiene J. (2000) Thallium-rich mineralization at Jas Roux, Hautes-Alpes, France: a complex epithermal, sediment-hosted, ore-forming system. *Journal of the Czech Geological Society*, **45**, 63–77.
- Johan Z., Mantiene J. and Picot P. (1974) La routhiérite, TlHgAsS_3 , et la laffittite, AgHgAsS_3 , deux nouvelles espèces minérales. *Bulletin de la Société Française de Minéralogie et de Cristallographie*, **97**, 48–53.
- Johan Z., Mantiene J. and Picot P. (1981) La chabournéite, un nouveau minéral thallifère. *Bulletin de Minéralogie*, **104**, 10–15.
- Meisser N., Roth P., Nestola F., Biagioni C., Bindi L. and Robyr M. (2017) Richardsollyite, TlPbAsS_3 , a new sulfosalts from the Lengenbach quarry, Binn Valley, Switzerland. *European Journal of Mineralogy*, **29**, 679–688.
- Sheldrick G.M. (2015) Crystal structure refinement with SHELXL. *Acta Crystallographica*, **C71**, 3–8.
- Topa D., Makovicky E., Favreau G., Bourgoin V., Boulliard J.C., Zagler G. and Putz H. (2013) Jasrouxite, a new Pb-Ag-As-Sb member of the lillianite homologous series from Jas Roux, Hautes-Alpes, France. *European Journal of Mineralogy*, **25**, 1031–1038.
- Topa D., Kolitsch U., Makovicky E. and Stanley C. (2017) Écrinsite, $\text{AgTl}_3\text{Pb}_4\text{As}_{11}\text{Sb}_9\text{S}_{36}$, a new thallium-rich homeotype of baumhauerite from the Jas Roux sulphosalt deposit, Parc national des Écrins, Hautes-Alpes, France. *European Journal of Mineralogy*, **29**, 689–700.
- Topa D., Kolitsch U., Stoeger B., Keutsch F. and Stanley C. (2020) Dewitite, IMA 2019-098. CNMNC Newsletter 63. *Mineralogical Magazine*, **85**, 910–915.
- Topa D., Stoeger B., Kolitsch U., Keutsch F., Stanley C. and Raber T. (2023a) Vallouiseite, IMA 2023-051. CNMNC Newsletter 75. *European Journal of Mineralogy*, **35**, 891–895.
- Topa D., Stoeger B., Kolitsch U. and Stanley C. (2023b) Montpélvouxite, IMA 2022-137. CNMNC Newsletter 72. *European Journal of Mineralogy*, **35**, 285–293.
- Wilson A.J.C., Ed. (1992) *International Tables for Crystallography, Volume C: Mathematical, physical and chemical tables*. Kluwer Academic, Dordrecht, The Netherlands.