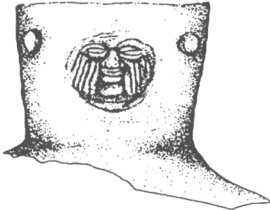
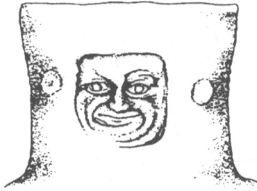


TEXAS



PAMPA GRANDE AND THE MOCHICA CULTURE

By Izumi Shimada

In this groundbreaking "biography" of one of the largest and most powerful cities established by the Moche culture on the north coast of Peru, Shimada explores how the Moche built, inhabited, and abandoned the site during A.D. 550–700.

8 1/2 x 11 inches, 328 pp.,
58 b&w photographs,
112 line drawings, 12 maps, 14 tables
ISBN 0-292-77674-8, \$60.00 cloth

HOW THE MAYA BUILT THEIR WORLD

**Energetics and Ancient
Architecture**

By Elliot M. Abrams

Posing the question "What can 300 Maya do in 100 days?" Abrams presents a groundbreaking new theory for translating massive structures into volumes of raw materials, production time, and labor costs. Abrams applies his method to residential structures of the Late Classic period at Copan, Honduras.

6 x 9 inches, 192 pp.,
6 b&w photographs, 12 figures,
4 maps, 12 tables
ISBN 0-292-70461-5, \$30.00 cloth
ISBN 0-292-70462-3, \$14.95 paper

LIVING WITH THE ANCESTORS

**Kinship and Kingship
in Ancient Maya Society**

By Patricia McNany

Integrating archaeological, epigraphic, and ethnohistoric data, McNany presents a holistic overview of Maya society and demonstrates that lineage is the organizing principle throughout all segments of Maya society.

6 x 9 inches, 248 pp.,
23 b&w photographs, 8 line drawings,
2 maps, 4 figures, 1 table
ISBN 0-292-75165-6, \$27.50 cloth

CULTURAL ECONOMIES PAST AND PRESENT

By Rhoda H. Halperin

Organized around the concepts of economy, ecology, equivalencies, householding, storage, and time, this new work presents an essential analytical "tool kit" for comparing economic processes in all societies and time periods.

6 x 9 inches, 280 pp.,
10 b&w photographs, 5 line drawings
ISBN 0-292-73089-6, \$40.00 cloth
ISBN 0-292-73090-X, \$17.95 paper



UNIVERSITY OF TEXAS PRESS

Box 7819 • Austin 78713 • To order, call 800-252-3206.

EXECUTIVE BOARD OF THE SOCIETY FOR AMERICAN ARCHAEOLOGY

Officers

President: BRUCE D. SMITH, Department of Anthropology, Mail Stop NHB 112, National Museum of Natural History/National Museum of Man, Smithsonian Institution, Washington, DC 20560.

President-elect: WILLIAM LIPE, Department of Anthropology, Washington State University, Pullman, WA 99164-4910.

Secretary: BRUCE E. RIPPETEAU, South Carolina Institute of Archaeology and Anthropology, 1321 Pendleton St., University of South Carolina, Columbia, SC 29208.

Secretary-elect: KEITH KINTIGH, Department of Anthropology, Arizona State University, Tempe, AZ 85287.

Treasurer: W. FREDERICK LIMP, Center for Advanced Spatial Technologies, 12 Ozark Hall, University of Arkansas, Fayetteville, AR 72701.

Board Members-at-Large

ROGER ANYON, Zuni Archaeology Program, P.O. Box 339, Zuni, NM 87327.

CATHERINE CAMERON, Advisory Council on Historic Preservation, 7279 W. Kentucky #B, Lakewood, CO 80226.

DIANE GIFFORD-GONZALEZ, Department of Anthropology, University of California, Santa Cruz, CA 95064.

JOHN W. RICK, Department of Anthropology, Stanford University, Stanford, CA 94305-2145.

BARBARA L. STARK, Department of Anthropology, Arizona State University, Tempe, AZ 85287.

JULIE K. STEIN, Department of Anthropology, DH-05, University of Washington, Seattle, WA 98195.

Ex-officio Executive Board Members

Executive Director: RALPH JOHNSON, Society for American Archaeology, 900 Second St., N.E., Suite 12, Washington, DC 20002.

Editor, American Antiquity: MICHAEL W. GRAVES, Department of Anthropology, 2424 Maile Way, Porteus 346, University of Hawaii, Honolulu, HI 96822.

Editor, Latin American Antiquity: DAVID M. PENDERGAST, Department of New World Archaeology, Royal Ontario Museum, 100 Queen's Park, Toronto, Ontario, Canada M5S 2C6.

Editor, SAA Bulletin: MARK ALDENDERFER, Department of Anthropology, University of California, Santa Barbara, CA 93106.

1995 Annual Meeting Program Chair: PAUL MINNIS, Department of Anthropology, University of Oklahoma, Norman, OK 73019.

NOTICE TO AUTHORS

Latin American Antiquity publishes papers on the archaeology, prehistory, and ethnohistory of Latin America, i.e., those countries—primarily Spanish speaking—comprising Mesoamerica, Central America, and South America, together with culturally affiliated adjacent regions. Submissions (articles or reports) may be in English, Spanish, or Portuguese. Authors should submit an original and three copies of their manuscripts (including all figures, tables, references, and notes), along with an abstract in *both* English and Spanish, to the editor. *Latin American Antiquity* follows *American Antiquity* style. Detailed information on policy, style, and technical matters of manuscript preparation is given in “Editorial Policy, Information for Authors, and Style Guide for *American Antiquity* and *Latin American Antiquity*,” which appeared in September 1992 (vol. 3, no. 3); for additional information, updates, or clarification consult the managing editor at the SAA office in Washington, D.C., (202) 789-8200.

CONTENTS

Editor's Corner: Further Matters of Great Moment <i>David M. Pendergast</i>	287
ARTICLES	
Demografía en la zona puuc: El recurso del método <i>Pierre Becquelin y Dominique Michelet</i>	289
The Hydraulic Hypothesis Revisited: Lake Titicaca Basin Raised Fields in Theoretical Perspective <i>Charles Stanish</i>	312
A Ceramic Compositional Perspective on the Formative to Classic Transition in Southern Mesoamerica <i>Hector Neff, Frederick J. Bove, Eugenia J. Robinson, and Barbara Arroyo L.</i>	333
Paracas in Nazca: New Data on the Early Horizon Occupation of the Río Grande de Nazca Drainage, Peru <i>Helaine Silverman</i>	359
REVIEWS AND BOOK NOTE	
<i>John R. Topic, Editor</i>	383
Reviews	
The American Southwest and Mesoamerica: Systems of Prehistoric Exchange, edited by Jonathon E. Ericson and Timothy G. Baugh <i>Ben A. Nelson</i>	383
La sociedad hidráulica zenú: Estudio arqueológico de 2,000 años de historia en las llanuras del Caribe colombiano, by Clemencia Plazas, Ana María Falchetti, Juanita Saenz Samper, y Sonia Archila <i>Rita Granda</i>	384
Inca Architecture and Construction at Ollantaytambo, by Jean-Pierre Protzen <i>H. Stanley Loten</i>	385
Wari Imperialism in Middle Horizon Peru, by Katharina J. Schreiber <i>Terence N. D'Altroy</i>	386
Aspectos de la arqueología en el Uruguay, by Klaus Hilbert <i>Thomas F. Lynch</i>	388
Book Note	
Die Schlacht bei Sieben Blume: Konquistadores, Kaziken und Konflikte auf alten Landkarten der Indianer Südmexikos, by Viola König <i>Michel R. Oudijk</i>	389
INDEX TO VOLUME 5	391