

BJPsych

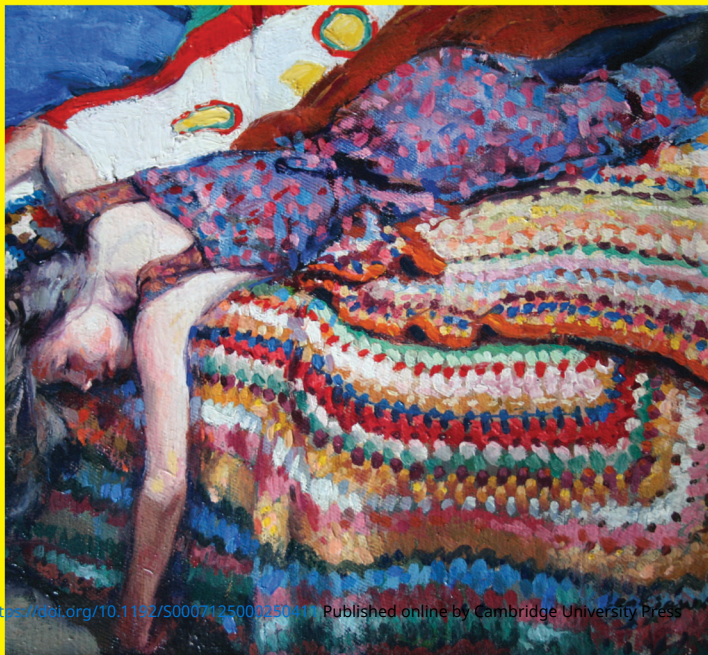
The British Journal of Psychiatry

**The psychiatric
case register**
Gayan Perera *et al*

**Magnetic resonance
imaging studies
in bipolar disorder
and schizophrenia**
Danilo Arnone *et al*

**Social anxiety
disorder in first-
episode psychosis**
Maria Michail
and Max Birchwood

**Mental capacity
and psychiatric
in-patients**
Gareth Owen *et al*



Contents

- A7 Editorial Board
A9 Highlights of this issue

Editorials

- 189 **Depression under stress: ethical issues in genetic testing**
A. J. Newson
- 191 **The psychiatric case register: noble past, challenging present, but exciting future**
G. Perera, M. Soremekun, G. Breen and R. Stewart

Review article

- 194 **Magnetic resonance imaging studies in bipolar disorder and schizophrenia: meta-analysis**
D. Arnone, J. Cavanagh, D. Gerber, S. M. Lawrie, K. P. Ebmeier and A. M. McIntosh

- 201 **Why I chose psychiatry**
Ian Rowbotham

Papers

- 202 **Adverse reactions to antidepressants**
R. Uher, A. Farmer, N. Henigsberg, M. Rietschel, O. Mors, W. Maier, D. Kozel, J. Hauser, D. Souery, A. Placentino, J. Strohmaier, N. Perroud, A. Zobel, A. Rajewska-Rager, M. Z. Dernovsek, E. R. Larsen, P. Kalember, C. Giovannini, M. Barreto, P. McGuffin and K. J. Aitchison
- 211 **Emotional side-effects of selective serotonin reuptake inhibitors: qualitative study**
J. Price, V. Cole and G. M. Goodwin
- 217 **Emile Nelligan – fallen stars**
Raymond Cavanaugh Jr.
- 218 **Neuroanatomical correlates of different vulnerability states for psychosis and their clinical outcomes**
N. Koutsouleris, G. J. E. Schmitt, C. Gaser, R. Bottlender, J. Scheuerecker, P. McGuire, B. Burgermeister, C. Born, M. Reiser, H.-J. Möller and E. M. Meisenzahl
- 227 **Brain morphology and neurological soft signs in adolescents with first-episode psychosis**
J. Janssen, A. Diaz-Caneja, S. Reig, I. Bombín, M. Mayoral, M. Parellada, M. Graell, D. Moreno, A. Zabala, V. G. Vazquez, M. Desco and C. Arango
- 234 **Social anxiety disorder in first-episode psychosis: incidence, phenomenology and relationship with paranoia**
M. Michail and M. Birchwood

- 241 **Hope to live – in 100 words**
Gethin Morgan

- 242 **Impact of persistent substance misuse on 1-year outcome in first-episode psychosis**
A. Turkington, C. C. Mulholland, T. M. Rushe, R. Anderson, R. McCaul, S. L. Barrett, R. S. Barr and S. J. Cooper

- 249 **Selective drop-out in longitudinal studies and non-biased prediction of behaviour disorders**

D. Wolke, A. Waylen, M. Samara, C. Steer, R. Goodman, T. Ford and K. Lamberts

- 257 **Mental capacity and psychiatric in-patients: implications for the new mental health law in England and Wales**

G. S. Owen, G. Szmukler, G. Richardson, A. S. David, P. Hayward, J. Rucker, D. Harding and M. Hotopf

- 263 ***Dracula* (1897), Bram Stoker – psychiatrists in 19th-century fiction**

Fiona Subotsky

Short reports

- 264 **Minor depression during adolescence and mental health outcomes during adulthood**

J. G. Johnson, P. Cohen and S. Kasen

- 266 **Imaginal desensitisation plus motivational interviewing for pathological gambling: randomised controlled trial**

J. E. Grant, C. B. Donahue, B. L. Odlaug, S. W. Kim, M. J. Miller and N. M. Petry

Columns

- 268 **Correspondence**
273 **Ten books. Chosen by Peter Tyrer**
276 **Book reviews**
278 **Contents of *Advances in Psychiatric Treatment***
279 **Contents of the *American Journal of Psychiatry***
280 **From the Editor's desk**

Cover picture

Untitled (c. 1980).
Robert Lenkiewicz (1941–2002).

Robert Oskar Lenkiewicz was inspired to paint at the age of 9 after seeing Charles Laughton portray Rembrandt in Korda's biopic. He attended St Martin's School of Art at 16 and later enrolled at the Royal Academy but pursued an independent course, working in a figurative style and often on a large scale. Lenkiewicz conceived of his paintings as parts of 'The Relationship Series' – large-scale exhibitions of paintings on social and existential themes. Themes such as *Vagrancy* (1973), *Mental Handicap* (1976), *Old Age* (1979) and *Death* (1982) examined in depth the effects of human isolation and spotlighted taboo sections of the community. Lenkiewicz also investigated the nature of personal relationships in ironically titled projects such as *Love & Mediocrity* (1976), and human physiology in a state of crisis in *Jealousy* (1977) and *Orgasm* (1978). He concluded that intense feeling isolates people rather than bringing them together – that intense aesthetic attraction, towards other people or ideas or beliefs, took us down 'the straight road to fascism', the tendency to treat other people as property. Thus, his *Projects* and his 25000 volume library were intended as 'an investigation of the origins of fascism by enquiring into obsessional behaviour in all its forms'.

The picture shown here was sold at auction in 2007 as *Woman on a bed*. Its true title is not known. It is oil on canvas, 28 × 28 cm and appeared in the *Suicide* exhibition in 1980, Section 12 of 'The Relationship Series'. Picture selected by Martin Humphreys. With thanks to Mark Penwill and The Lenkiewicz Foundation.

We are always looking for interesting and visually appealing images for the cover of the *Journal* and would welcome suggestions or pictures, which should be sent to Dr Allan Beveridge, British Journal of Psychiatry, 17 Belgrave Square, London SW1X 8PG, UK or bjp@rcpsych.ac.uk

