

JOURNAL OF MENTAL SCIENCE.

Asylum Reports have been received for 1912-13 from those marked with an asterisk:—COUNTRY.—Beds, Berks, Bucks,* Cambridge, Carmarthen,* Chester, Chester (Parkside), Cornwall, Cumberland,* Denbigh, Derby,* Devon, Dorset,* Durham, Essex, Glamorgan,* Gloucester, Hants,* Isle of Wight, Hereford, Hertford, Kent (Barming),* (Chartham),* Lancashire (Lancaster), (Rainhill), (Prestwich),* (Whittingham), Leicester, Lincoln (Kesteven), (Bracebridge), London (Colney Hatch), (Hanwell), (Banstead), (Canehill), (Claybury), (Bexley), (Stone, Dartford),* Middlesex, Monmouth,* Norfolk, Northampton, Northumberland,* Nottingham, Oxford, Salop,* Somerset (Wells), (Taunton), Stafford (Stafford),* (Burntwood),* (Cheddleton),* Suffolk,* Surrey (Brookwood),* (Netherne),* Sussex (East), (Chichester), Warwick, Wilts,* Worcester,* Yorkshire (Wakefield),* (Wadsley), (Menston), (Clifton), (Beverley); BOROUGH.—Birmingham (Winson Green), (Rubery Hill), Bristol, Canterbury, Cardiff,* Derby,* Exeter, Hull, Hayward's Heath,* Ipswich, Leicester,* Middlesbrough,* Newcastle, Norwich, Nottingham, Plymouth, Portsmouth, Sunderland, West Ham.* HOSPITALS.—Manchester, Wonford, Barnwood,* Albert, Lincoln, St. Luke's, St. Andrew's, St. Ann's,* Coppice, Warneford,* Coton Hill, Bethlem,* Earlswood,* Bootham,* Retreat,* Colchester,* Broadmoor, Isle of Man; Metropolitan Asylums Board (Caterham),* (Darent),* (Leavesden),* (Tooting Bec),* (Rochester House); Aberdeer (Kingsseat),* Argyll, Ayr,* Dumfries,* Edinburgh,* Midlothian, Fife Dundee, Montrose, Inverness,* Lanark, Barony, Glasgow, (Royal), (Woodilee),* Govan,* Gartloch,* Kirklands, Perth,* Murthly, Roxburgh,* Stirling,* Baldovan, Armagh, Ballinasloe, Belfast, Carlow Castlebar, Clonmel, Cork, Downpatrick,* Ennis, Enniscorthy, Farnham, Kilkenny, Killarney, Letterkenny, Limerick, Londonderry, Maryborough, Monaghan, Mullingar, Omagh, Palmerston, Richmond, St. Patrick's, Sligo, Waterford.


The following Asylum Reports have also come to hand:—Egypt, Cape of Good Hope, Nova Scotia, New Brunswick, Victoria, New York, Massachusetts Hospital, Ontario, Verdun, Warren, Pennsylvania, Philadelphia Friends, Binghamton, Willard, Northampton, Long View, South Australia, Cleveland, Matteawan, New South Wales, Assam and Oudh, Assam, Madras, Bengal, Bombay, Central Provinces, Rangoon, Punjab, North-Western Provinces, Tezpur, Mississippi, Pennsylvania Hospital, Washington, Utica, Long Island, Virginia Central, Illinois West, New Hampshire, Butler, Massachusetts, Pennsylvania West, South Mountain, Manhattan, Indiana East, Connecticut, Carolina N., Dakota N., Ohio, Carthage, Michigan East, Missouri, Alt Scherbitz, Massachusetts Board, West, Pennsylvania, Danville, Sheppard and Pratt Hospital, Pennsylvania, Harrisburgs, Pennsylvania, Norristown, Aarhu, Hudson River, Rochester, Taunton, Iowa, Jamaica, Pretoria, Egypt, Albany, Tarrytown, Straits Settlements, Lower Austria.

Authors of Original Papers receive 25 reprints of their papers free of cost if application be made on the slips when returning proofs. If more reprints are required, notice should be at the same time sent to Messrs. ADLARD and SON, Bartholomew Close, London, E.C., who will supply them at a fixed charge. Unless instructions are sent by authors of Papers, proofs are returned, no copies can be guaranteed.

The copies of the *Journal of Mental Science* are regularly sent by carrier, who in every case obtains a receipt of delivery, to the Editors and Honorary Members of the Association. Complaints of non-receipt of Papers should be sent to Messrs. ADLARD. Any change of address should be sent to the General Secretary.

The Moat House, Tamworth, Staffs.

Stations: L. & N.W. and Mid. Railways.



The House stands in grounds of ten acres (within five minutes' drive of either Station), and is devoted to the Care and Treatment of a few Ladies suffering from Nervous and Mental Disorders, who enjoy the comforts, privacy, and occupations of home-life. Voluntary Patients are received without Certificates.

For terms, etc., apply to the Resident Licensees:

EDWARD HOLLINS,
M.A.Camb., J.P., or
(Mrs.) S. A. MICHAUX.

A Home for Nervous and Mental Cases.

BARNSLEY HALL, BROMSGROVE.

Mental Private Patients OF BOTH SEXES are received in connection with the Worcestershire Asylum.

EXTENSIVE PRIVATE GROUNDS IN THE BEAUTIFUL LICKEY DISTRICT.

Charge: ONE GUINEA WEEKLY.

For further particulars and necessary forms apply to the MEDICAL SUPERINTENDENT.

TRAINED NURSES' DEPARTMENT AT THE RETREAT, YORK.

Staffed by Nurses who have been trained for four years in the Retreat and conducted upon a profit-sharing basis. Mental and Nervous cases only undertaken. **Terms 2 guineas weekly. Male Nurses £2 10 0.**

Apply, **MATRON, Retreat, York.** Nat. Tel. 112.

ALWAYS USE

REFLEX

FLOOR POLISH.

REQUIRES NO MIXING WHATEVER.

Brilliantly Polishes Floors, Linoleums, Floorcloths, &c.
Economical, Cleanly, Healthful; Maximum of Lustre for Minimum of Labour.

GEO. T. COX & SONS, Ltd.,
9 & 10, ST. MARY-AT-HILL, EASTCHEAP, LONDON, E.C.

This Polish is specially adapted for use in Public Institutions and other large establishments. Samples Free on application.

Mental or Physical Fatigue



A PARTIALLY PRE-DIGESTED MILK AND WHEATEN FOOD.

When brain or body is weary the digestive powers are weakened and distaste for ordinary food is often experienced. Under such circumstances the "ALLENBURYS" DIET is especially valuable. It is pleasant to take, easily digested and assimilated, and speedily restorative. Thus it helps the system to recover tone and vigour.

By the use of the "ALLENBURYS" DIET all trouble of peptonising milk and farinaceous foods is overcome. In the sick room it will be found extremely useful as the food is easily digested and assimilated, is quickly made, and only the exact quantity required need be prepared at a time.

The "ALLENBURYS" DIET is made from pure, rich milk and whole wheat, both ingredients being partially pre-digested during manufacture. It can be taken by those who cannot digest cow's milk, and provides a light and very nourishing diet for Invalids, Dyspeptics and the Aged.

For travellers by sea or land this complete food will be found exceedingly valuable.

Made in a minute. Add boiling water only.

A Sample with full particulars sent free on request.

ALLEN & HANBURYS Ltd.,
37 Lombard Street, London, E.C.

SOUTH BEACON,
HADLOW DOWN, BUXTED, SUSSEX.
ESTABLISHED 1892.

Telegrams: "Hadlow Down." Stations: Buxted, Mayfield or Heathfield.

**40 Acres of
Farm and
Recreation
Ground.
Riding,**

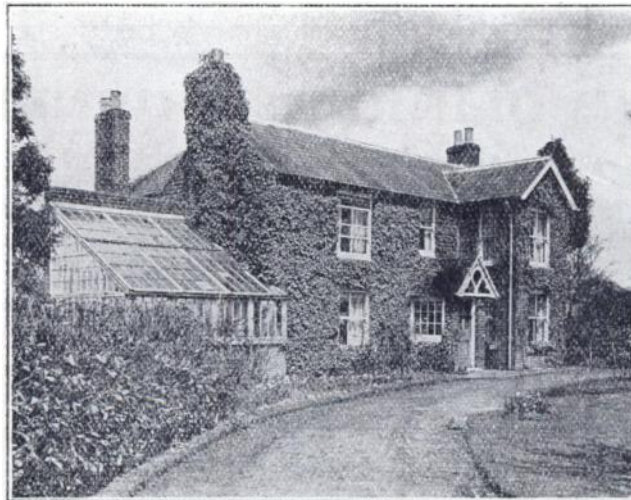


**Driving,
Motoring,
Golf
and all
Outdoor
recreations.**

For the Treatment of Nervous or slight Mental Breakdown.

TERMS FROM 3 GUINEAS PER WEEK.

THE CROFT.



A comfortable cottage residence, where one gentleman can have special care and attention without necessarily coming into contact with other patients.

If desirable he can enjoy all the recreations provided at South Beacon—Motoring, Riding, Golf.

UNDER MEDICAL SUPERVISION.
MALE NURSES' (TEMPERANCE) CO-OPERATION.
LIMITED.

Only
Addresses— { London: 10, THAYER STREET, MANCHESTER SQUARE, W
Manchester: 235, BRUNSWICK ST. (Facing Owens College).
Edinburgh: 7, TORPHICHEN STREET.
Birmingham: 75, HAGLEY ROAD.

Superior Trained MALE NURSES for Medical, Surgical, Mental, Dipsomania, Fever, and Travelling Cases supplied at a moment's notice, Day or Night. All Nurses supplied by this Association are TOTAL ABSTAINERS. SKILLED MASSEURS supplied. Terms: £1 10s. 6d. to £3 3s. per week. Nurses to receive their own fees.

ALL NURSES FULLY INSURED AGAINST ACCIDENT.

Telephones { (London), 538, Paddington.
(Manchester), 4899, Central.
(Edinburgh), 2715, Central.
(Birmingham), 2106, Midland.

Telegrams { "Assuaged, London."
"Assuaged, Manchester."
"Assuaged, Edinburgh."
"Assuaged, Birmingham."

W. WALSH, Secretary.

**British Journal of
Children's Diseases.**

MONTHLY, 2/- net.

ANN. SUB. 20/- net, \$5, post free.

ADLARD & SON, BARTHOLOMEW CLOSE, E.C.

THE CLINICAL JOURNAL

A WEEKLY RECORD OF

CLINICAL MEDICINE AND SURGERY.

Annual Sub. 15/6 post free Inland.

NOTICE TO ADVERTISERS.

*All Communications concerning Advertisements
in 'The Journal of Mental Science' should be
addressed to*

**Messrs. ADLARD & SON,
Bartholomew Close, London, E.O.**

Telephone: Holborn 927.

JOURNAL OF MENTAL SCIENCE.

CONTENTS FOR APRIL, 1914.

Pages

Original Articles.—

The Complement-Deviation in Cases of Manic-Depressive Insanity; by Lewis C. Bruce, M.D., F.R.C.P.E.—Further Observations on the Influence of Toxins on the Central Nervous System; by D. Orr, M.D., and R. G. Rows, M.D.—The Importance of Disturbances of the Personality in Mental Disorders; by R. G. Rows, M.D.—The Pupil and its Reflexes in Insanity; by A. H. Firth, M.A., M.D. Edin.—The Clinical Significance of Katatonic Symptoms; by Henry Devine, M.D., B.S. Lond., M.R.C.P. . . . 177—291

Clinical Notes and Cases.—

Some Doubtful Cases of So-called General Paralysis of the Insane; by W. Robinson, M.B., D.P.M. . . . 291—295

Occasional Notes.—

Sir Thomas Barlow and "After-Care" . . . 295—297

Reviews.—

The Sixty-seventh Report of the Commissioners in Lunacy for England and Wales, 1912.—Fifty-fifth Annual Report of the General Board of Commissioners in Lunacy for Scotland.—Sixty-second Report of the Inspectors of Lunatics (Ireland) for the Year ending December 31st, 1912.—Précis de Psychiatrie; by E. Régis.—Mental Diseases: A Text-book on Psychiatry for Medical Students and Practitioners; by R. H. Cole, M.D., M.R.C.P.—London Public Health Administration; How to Diagnose Smallpox; The Administrative Control of Smallpox; by W. McC. Wanklyn, B.A. Cantab., M.R.C.S., L.R.C.P., D.P.H. . . . 297—316

Epitome.—

Progress of Psychiatry during 1913: France, by Dr. RENÉ SEMELAÏGNE; Germany, by Dr. J. BRESLER; Portugal, by Dr. CAETANO MARIA BEIRÃO . . . 316—325

Epitome of Current Literature.—

1. Physiological Psychology.—2. Clinical Psychiatry.—3. Treatment of Insanity.—4. Pathology of Insanity . . . 325—335

Notes and News.—

The Medico-Psychological Association of Great Britain and Ireland.—The Library of the Medico-Psychological Association.—London County Council.—Family and Personal Histories of Patients.—The After-care Association.—The Royal Society of Medicine.—Obituary.—Notices by the Registrar.—Notices of Meetings.—Appointments . . . 336—350

ADLARD AND SON, IM PR., LONDON AND DORKING.