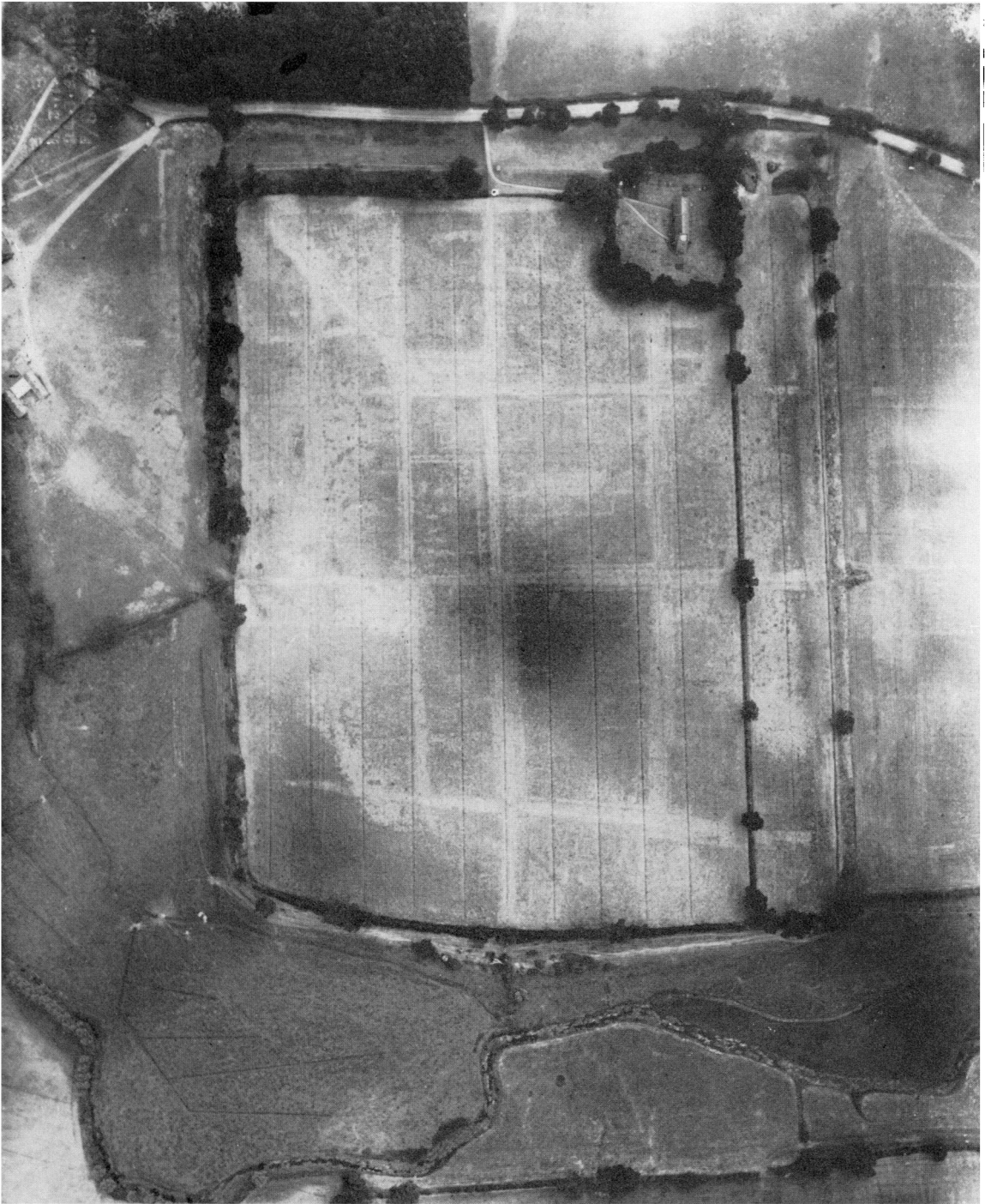


PLATE I



*National Monuments Record: Crown Copyright reserved.*

Vertical air-photograph of Caistor by Norwich taken in 1928 (p. 1).

BRITANNIA, VOL. II (1971)

FRERE, THE FORUM AND BATHS AT CAISTOR

PLATE II

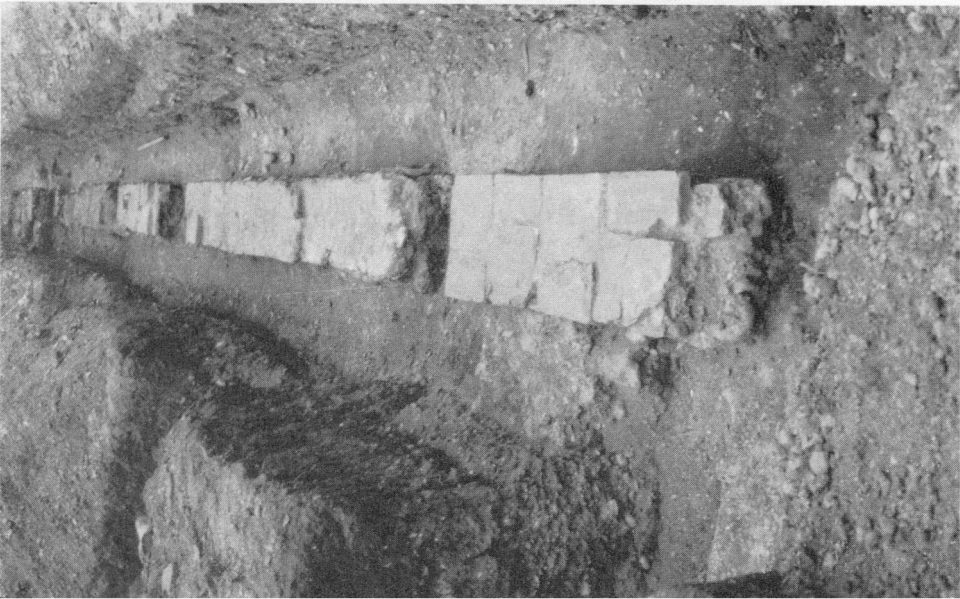


A. Caistor by Norwich: Basilica, west wall of nave looking SW., showing traces of bonding tiles and clunch facing (p. 7).



B. Caistor by Norwich: Forum I, south steps to terrace in front of Basilica, looking SW. (p. 7).

PLATE III



A. Caistor by Norwich: Forum I, stylobate of north portico,  
looking W. (p. 8).

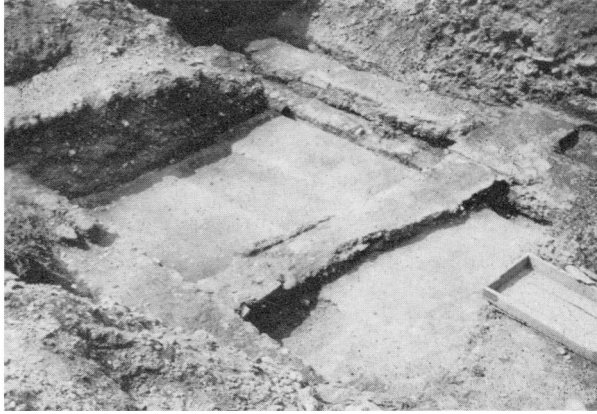
BRITANNIA, VOL. II (1971)



B. Caistor by Norwich: Forum I, sump and end of cast gutter,  
looking S. (p. 8).

FRERE, THE FORUM AND BATHS AT CAISTOR

PLATE IV



A. Caistor by Norwich: Forum I. North-east corner of courtyard (right) looking SE., showing walls crossing north and east porticos (p. 5).



B. Caistor by Norwich: Forum I, stylobate of external east colonnade, looking W. (p. 8).

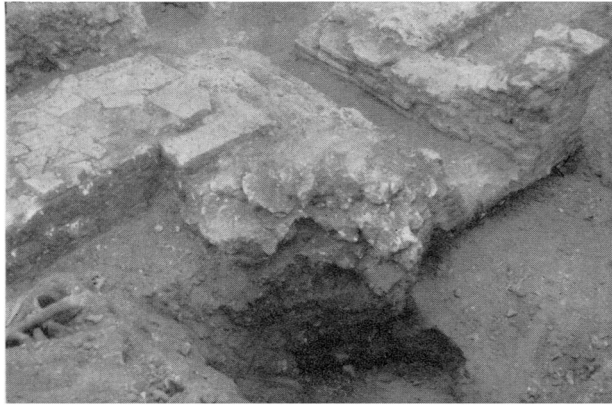


C. Caistor by Norwich: Forum II, stylobate of external east portico (tilted), looking S. (p. 14).

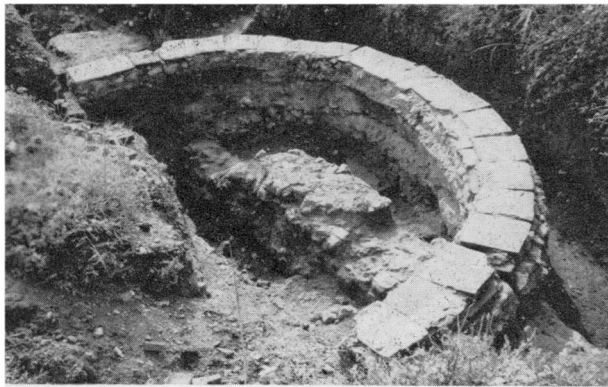
PLATE V



A. Caistor by Norwich: Forum I, Room 2 looking W. (p. 7).

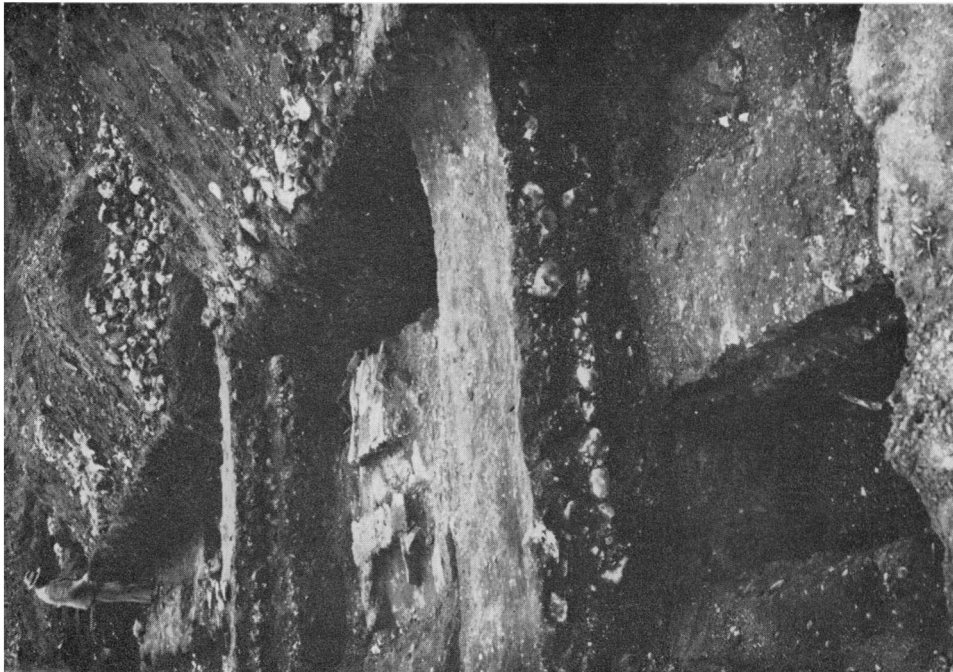


B. Caistor by Norwich: Forum I, stokehole of Room 2 with pit below, looking NE. (p. 9).

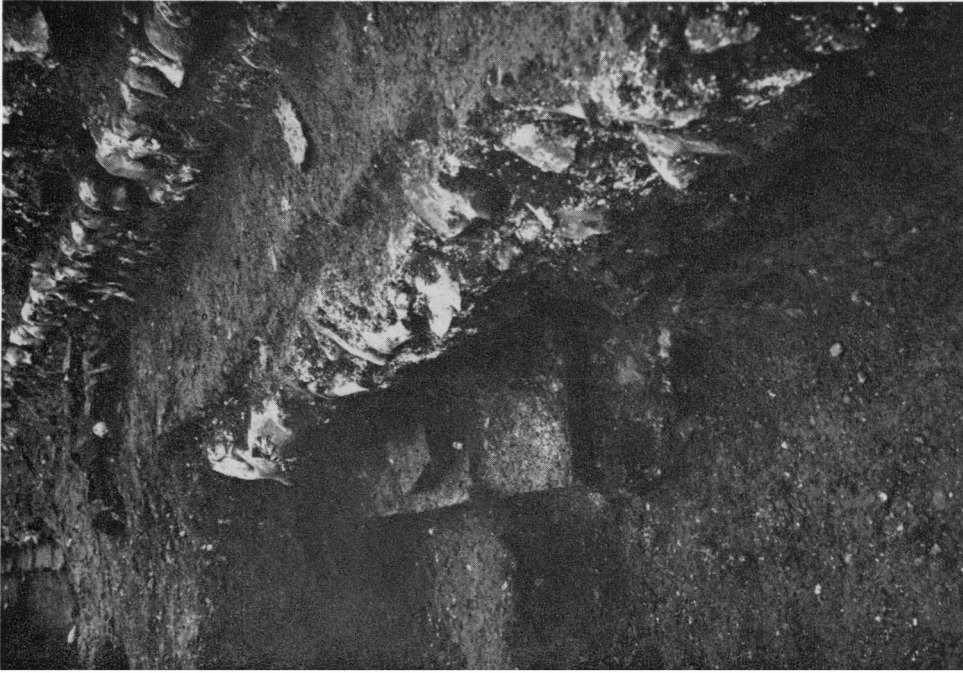


C. Caistor by Norwich: Forum II, the apse, looking SE. (p. 13).

PLATE VI



A. Caistor by Norwich: Forum II, oven in Room 4 overlying wall of Forum I Room 14 (p. 13).



B. Caistor by Norwich: successive stylobates on south side of the courtyard of Forums I and II (p. 11).

PLATE VII



A. Caistor by Norwich: Forum II, stylobate at north side of courtyard looking E. (p. 13).



B. Caistor by Norwich: Forum II, internal east stylobate looking S. from corner of courtyard. (p. 13).

BRITANNIA, VOL. II (1971)

FRERE, THE FORUM AND BATHS AT CAISTOR

PLATE VIII



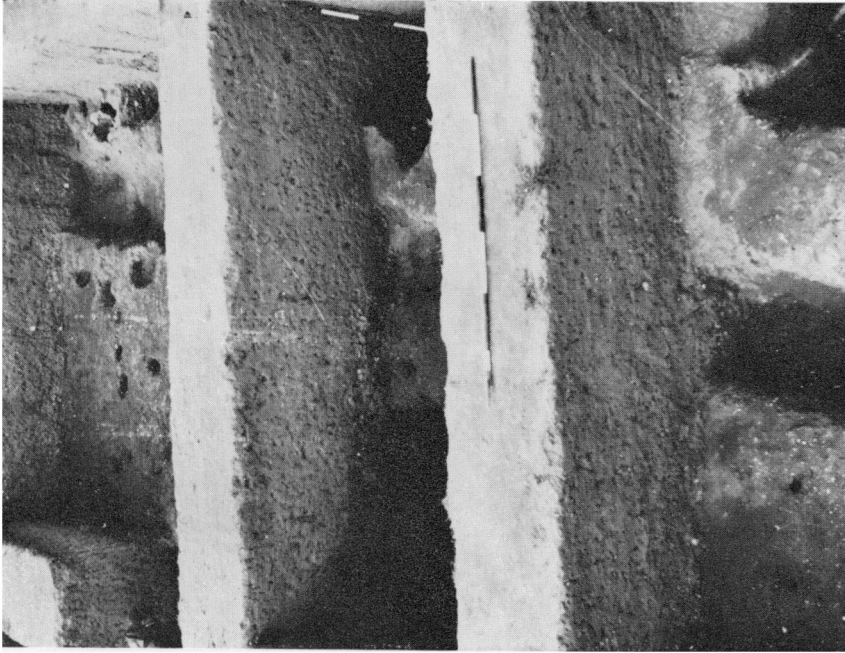
A. Gosbecks Theatre: two post-pits of Phase I south of the robbed *cavea* wall of Phase II in Trench 18, looking E. (p. 31).



B. Gosbecks Theatre: robber-trench of *cavea* wall and buttress No. 6 in Trench 20, looking N. (p. 37).



PLATE IX



B. Gosbecks Theatre: Front of the stage showing Trenches 9, 11 and 12, looking W. The upright staff stands in the west central post-hole in front of the stage of Phase II (p. 39).

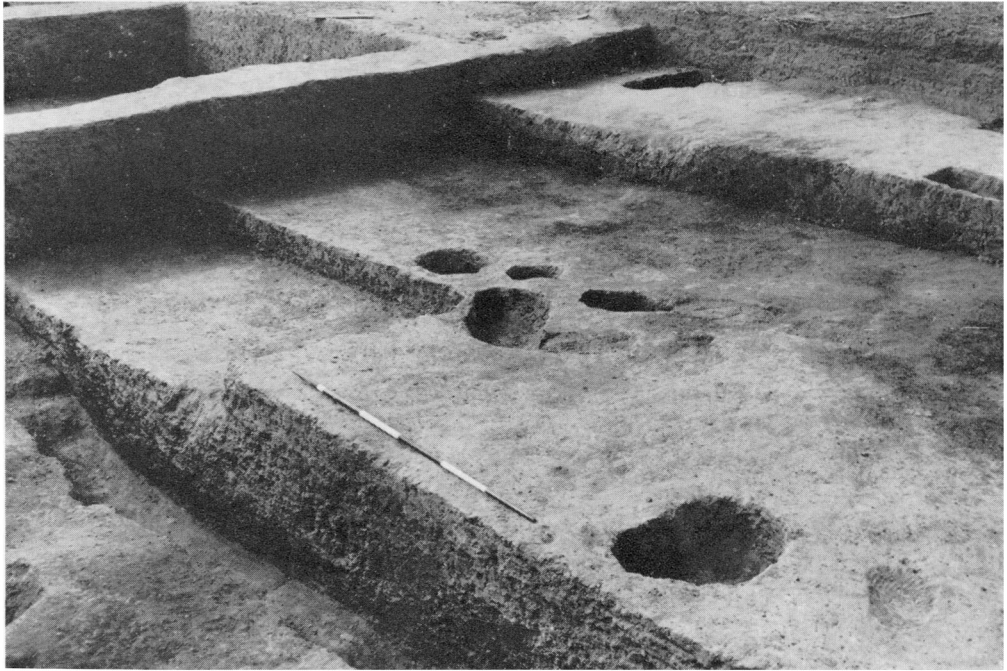


A. Gosbecks Theatre: Staircase 2 in Trench 22, looking E., with remains of semicircular depression at the end of the *cava* wall west of the gap (foreground) and turf bank blocking it (right, centre) (pp. 35, 37).

DUNNETT, ROMAN THEATRE AT GOSBECKS

BRITANNIA, VOL. II (1971)

PLATE X



A. Gosbecks Theatre: post-pits of the orchestra wall, Trench 6, looking SW. In foreground the make-up of the orchestra floor of Phase II has been removed to show the Phase I surface (p. 39).

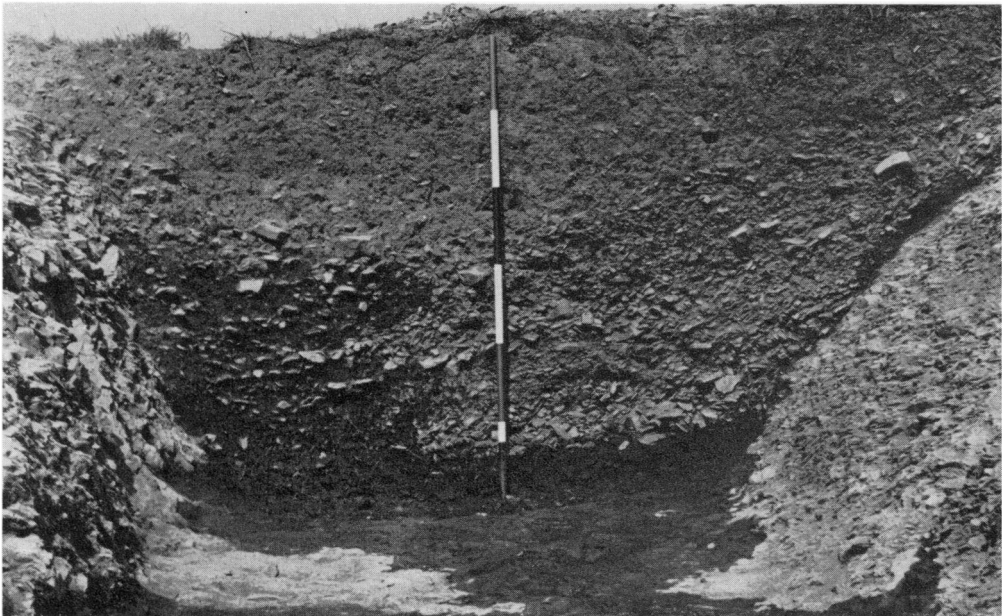


B. Gosbecks Theatre: latest cobbled surface in the north entrance with central post-hole, looking S. (p. 38).  
BRITANNIA, VOL. II (1971) DUNNETT, ROMAN THEATRE AT GOSBECKS

PLATE XI

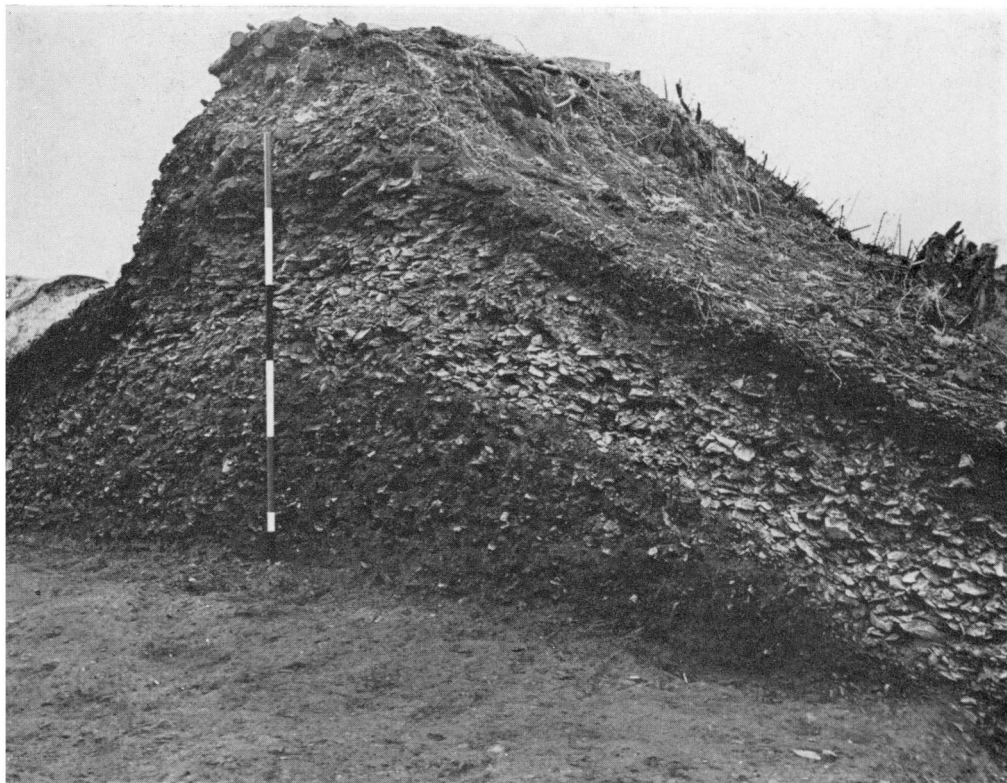


A. Walesland Rath: aerial view (p. 50).



B. Walesland Rath: ditch-section in area M (p. 55).

PLATE XII

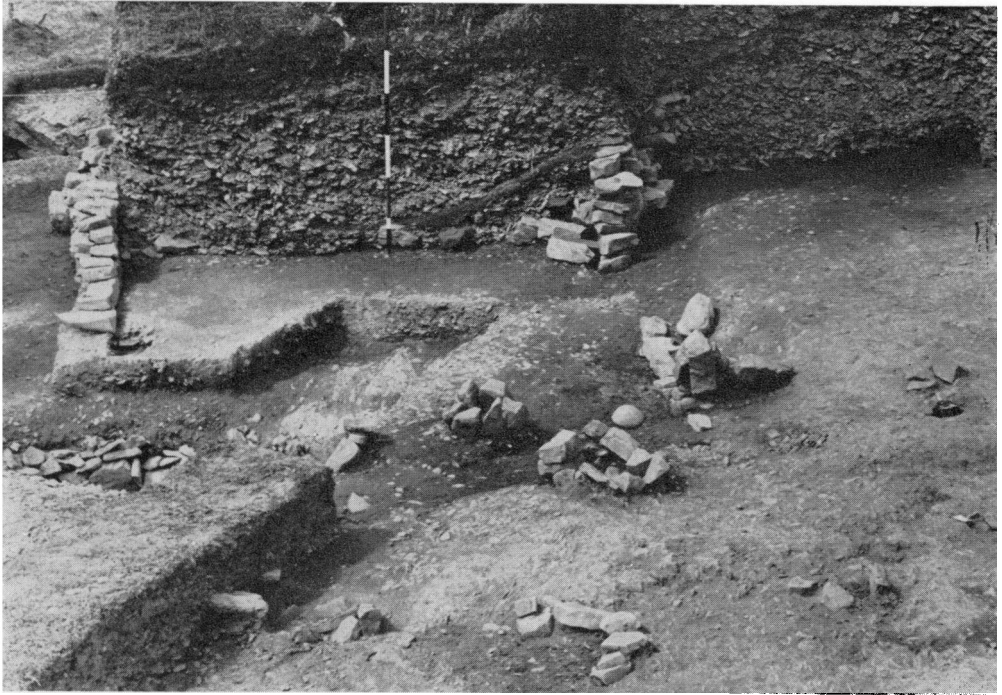


A. Walesland Rath: bank-section in area B (pp. 52, 54).



B. Walesland Rath: stone revetment of the bank of Phase II in Area P (p. 54).

PLATE XIII



A. Walesland Rath: the west entrance of Phase I sealed by the bank of Phase II (p. 68).

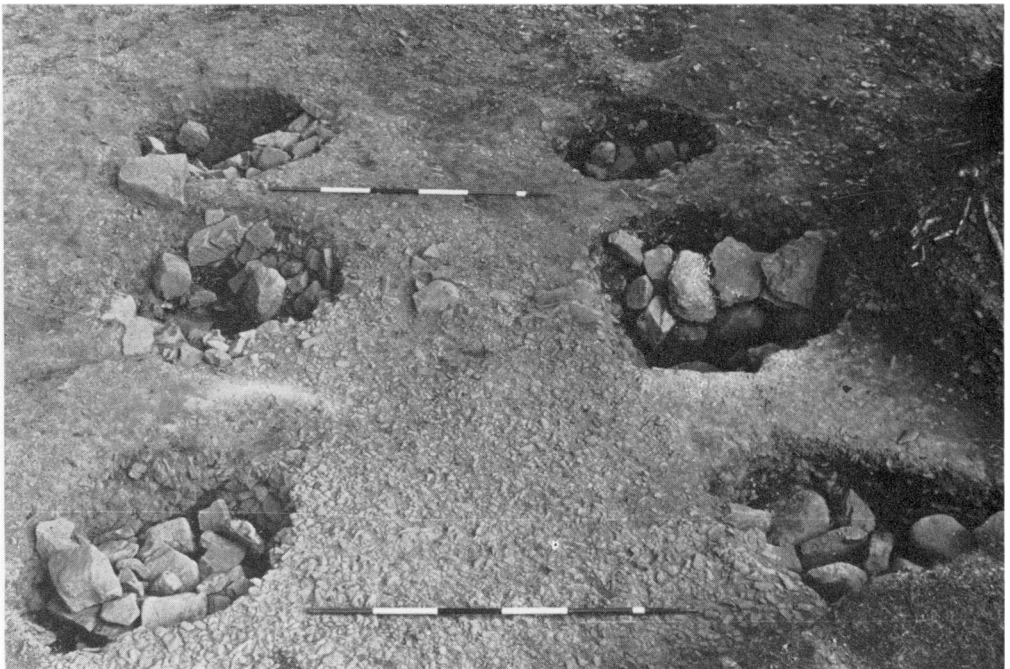


B. Walesland Rath: the west entrance of Phase I (p. 58).

PLATE XIV

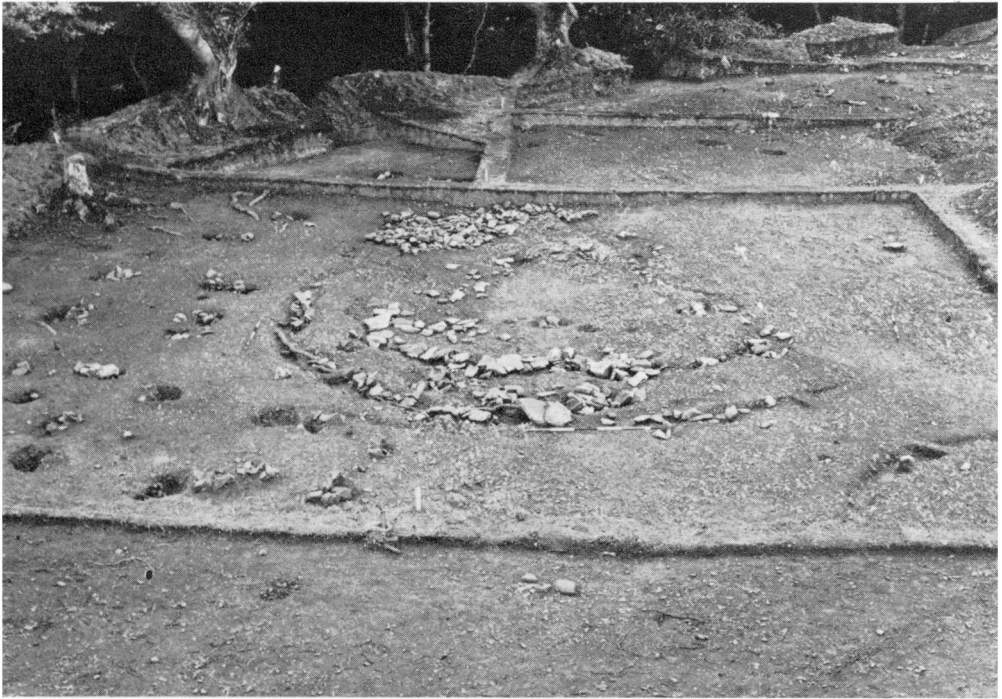


A. Walesland Rath: the south-east entrance, Phase II (p. 60).



B. Walesland Rath: the south-east entrance, Phase I (p. 60).

PLATE XV



A. Walesland Rath: Hut B from the west (p. 77).



B. Walesland Rath: Hut E from the west (p. 66).

PLATE XVI



Walesland Rath: the raft of stones beneath the Romano-British Building which rests upon cobbles of the Iron Age entrance (p. 81).



PLATE XVII

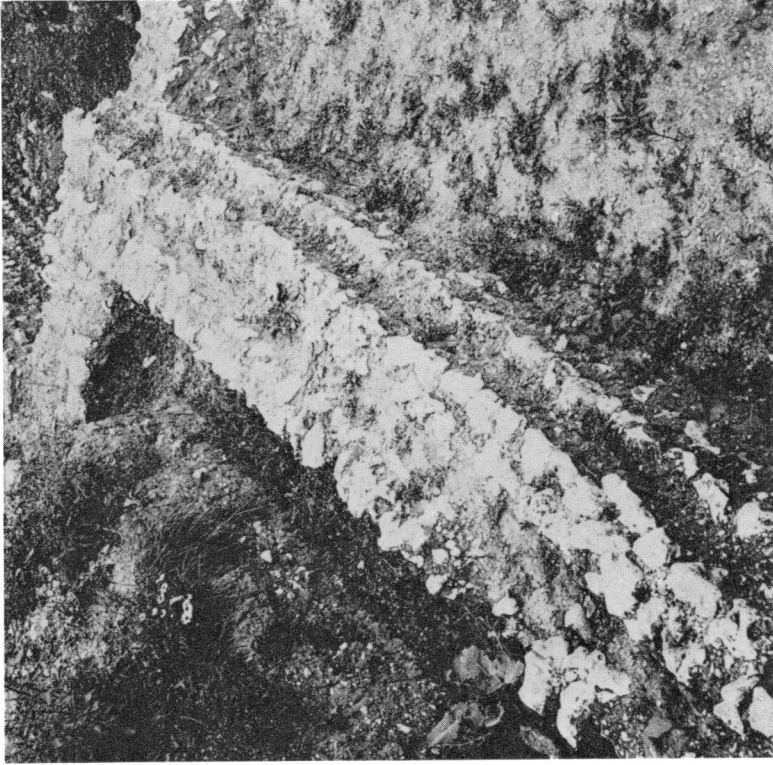


A. Stone bonding-courses, Pevensey (p. 172).

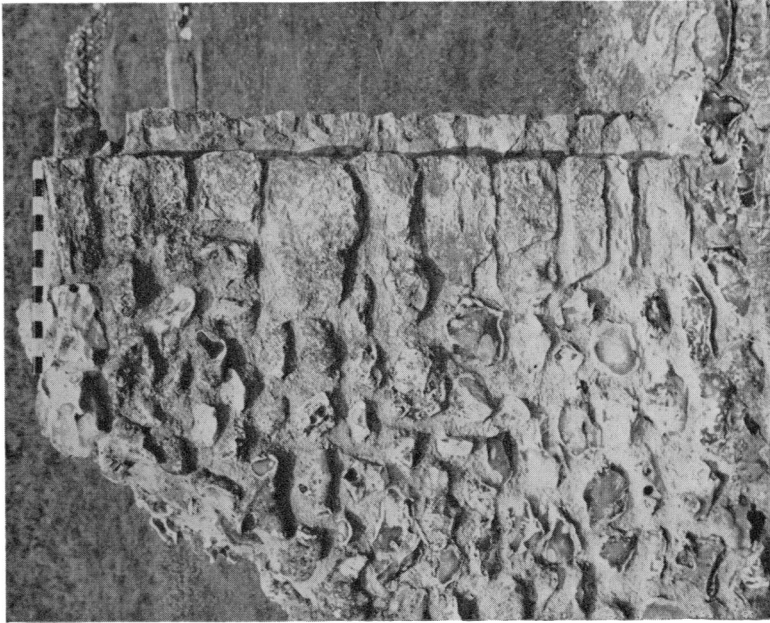


B. Tile bonding-courses, Portchester (p. 172).

PLATE XVIII



B. Half-timbered construction, Silchester (p. 175). (Reproduced from *Archaeologia* lviii (1903), pl. xcviij b, by permission of the Society of Antiquaries — copyright reserved).

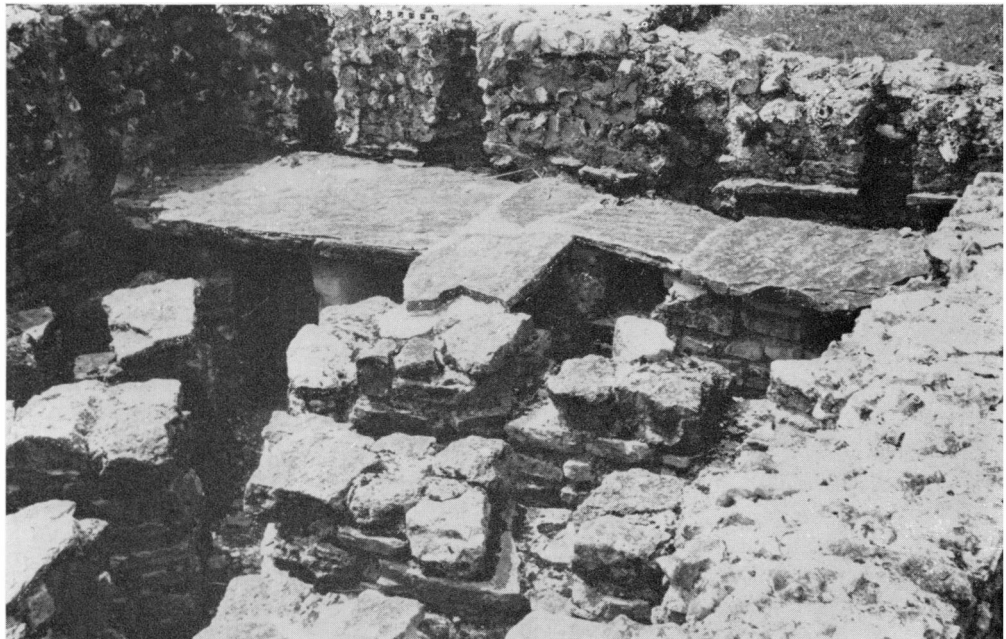


A. Lias limestone quoins, Colliton Park, Dorchester, Dorset (p. 172).

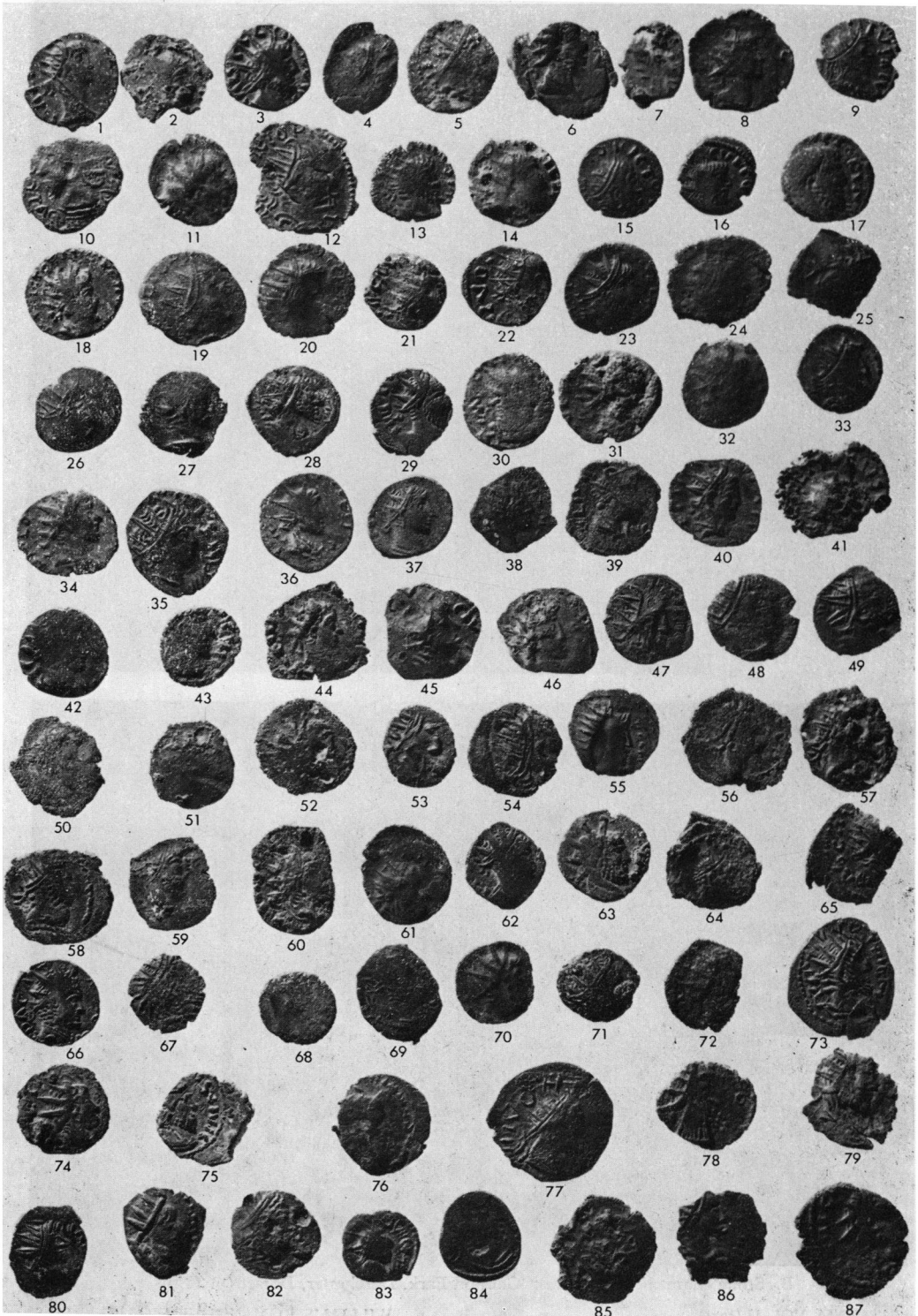
PLATE XIX



A. Greensand masonry, the *pharos*, Dover (p. 172).

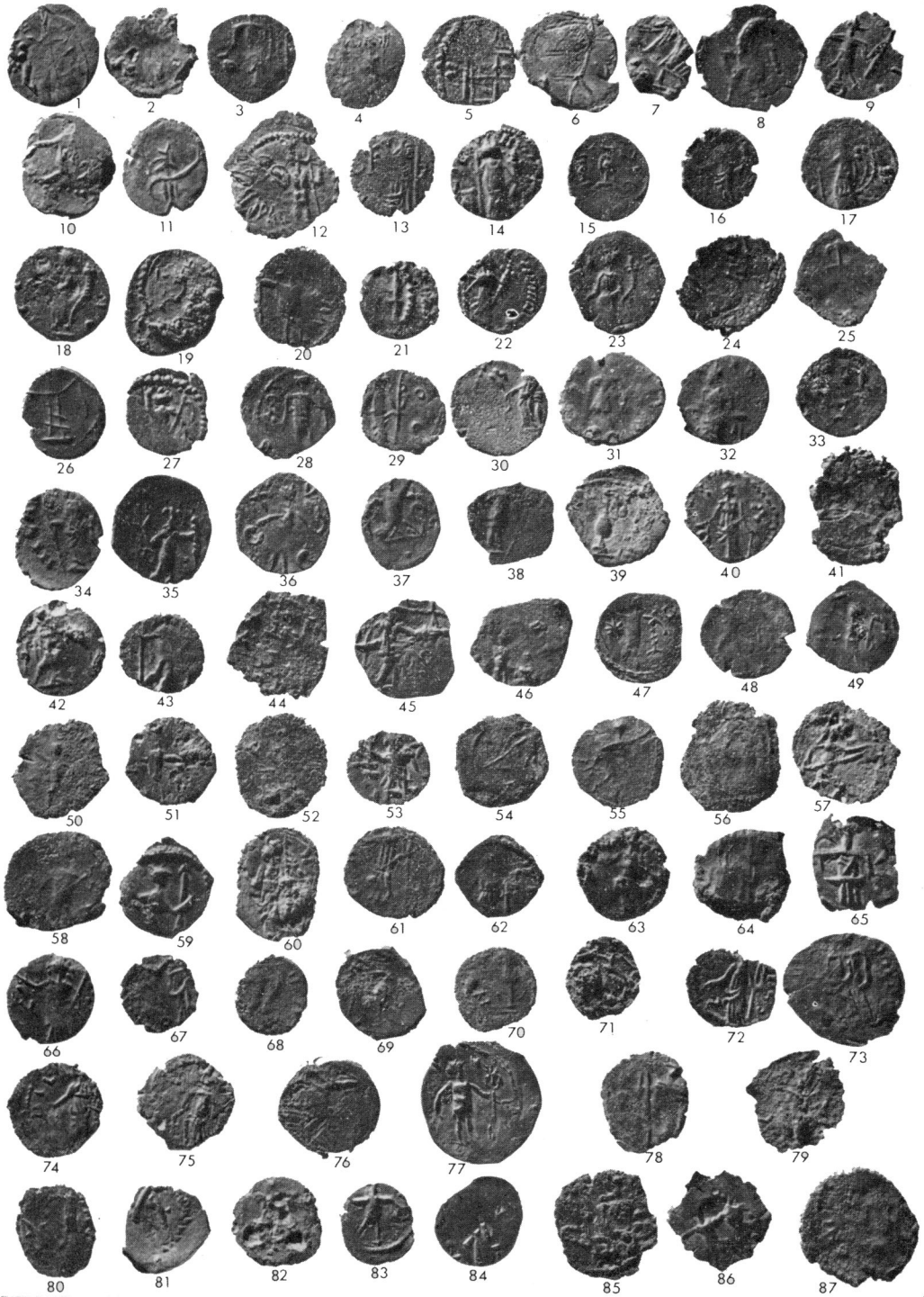


B. Stone channelled hypocaust, Colliton Park, Dorchester, Dorset (p. 183).



The Verulamium (1960) Hoard of barbarous radiates—obverses (1) (pp. 196-9).

PLATE XXI



The Verulamium (1960) Hoard of barbarous radiates—reverses (‡) (pp. 196-9).

BRITANNIA, VOL. II (1971)

MATTINGLY, HOARD OF 'BARBAROUS RADIATES'

PLATE XXII



*(Photograph: Ministry of Public Building and Works: Crown Copyright)*

A. Complete beam from Catterick: length 5 ft. 6 in. (pp. 200-1).



*(Photograph: F. M. B. Cooke)*

B. Beams from Chedworth: the longest (5 ft. 4 in.) lies at the front (p. 200).

PLATE XXIII



(Photographs: F. M. B. Cooke)

(B) Side view with the casting bent outwards at the break.

WAGHER, ROMAN IRON BARS



Broken beam from Leicester (3 ft. overall length) showing

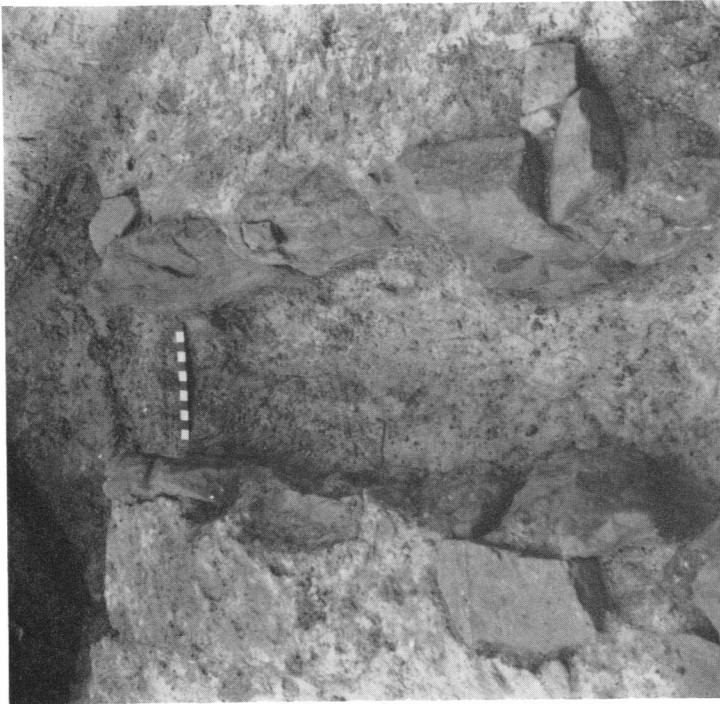
(A) Front view showing the two prongs (p. 201).

BRITANNIA, VOL. II (1971)

PLATE XXIV



B. Experimental ore-roasting furnace at Horam (p. 208).



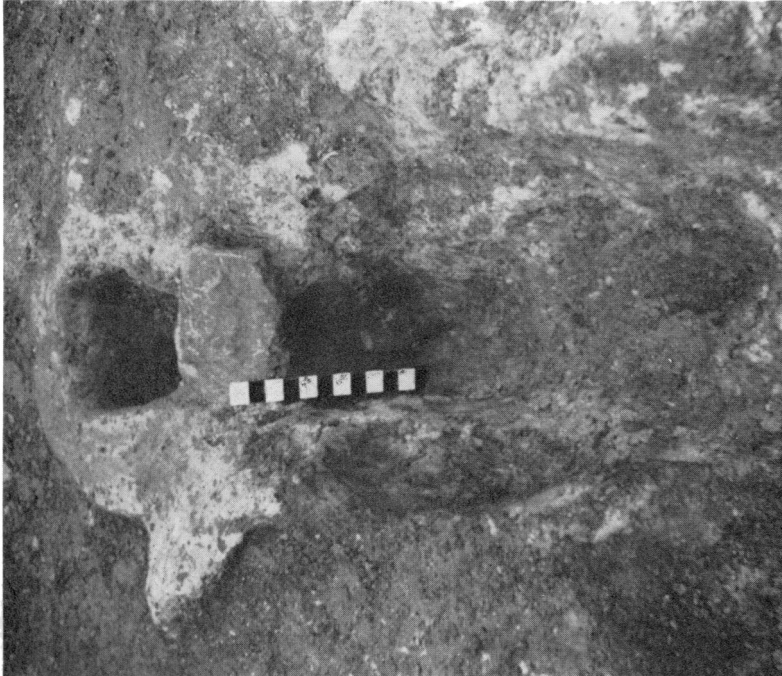
A. Romano-British ore-roasting furnace No. 2 from Bardown, Sussex (p. 208).



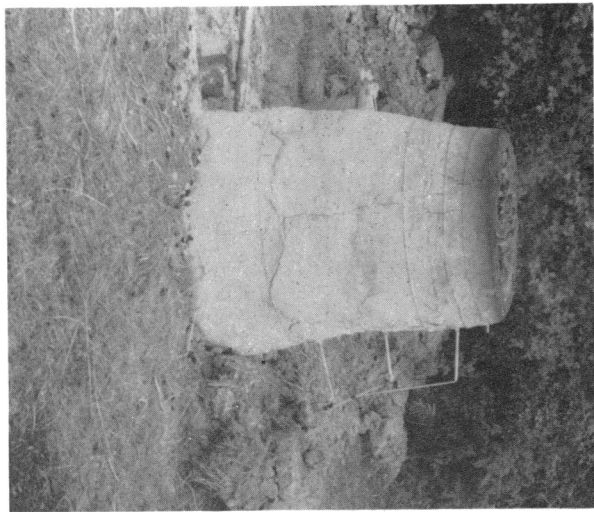
PLATE XXV



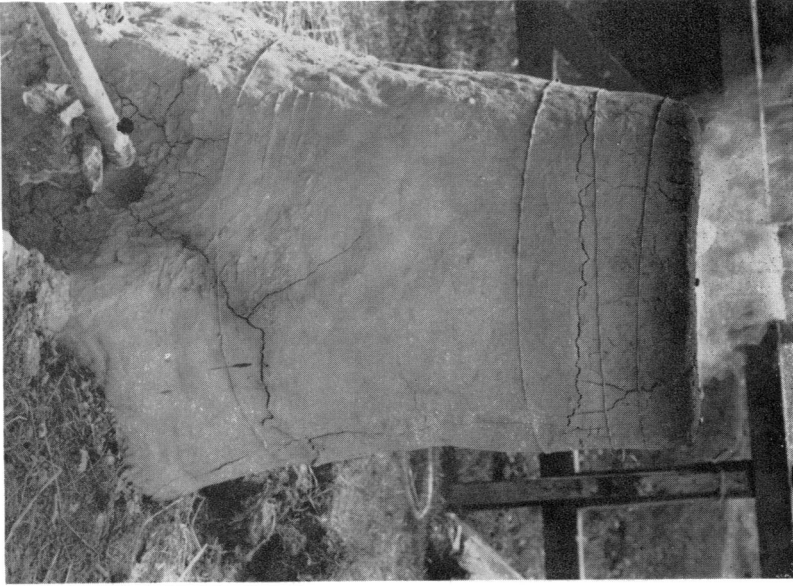
B. The original 2 ft. 6 in. experimental furnace preparatory to drying (p. 209).



A. Romano-British smelting furnace No. 4 from Holbeanwood, Sussex (p. 209).

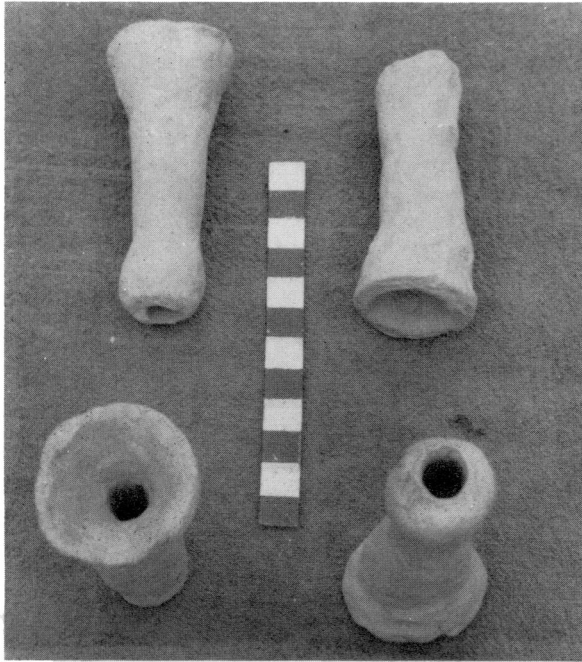


A. The experimental furnace, showing method of stopping up the furnace-arch (Trial 2) (p. 209).



B. The furnace as enlarged, showing thermocouples (T1 is not visible) (p. 211).

PLATE XXVII

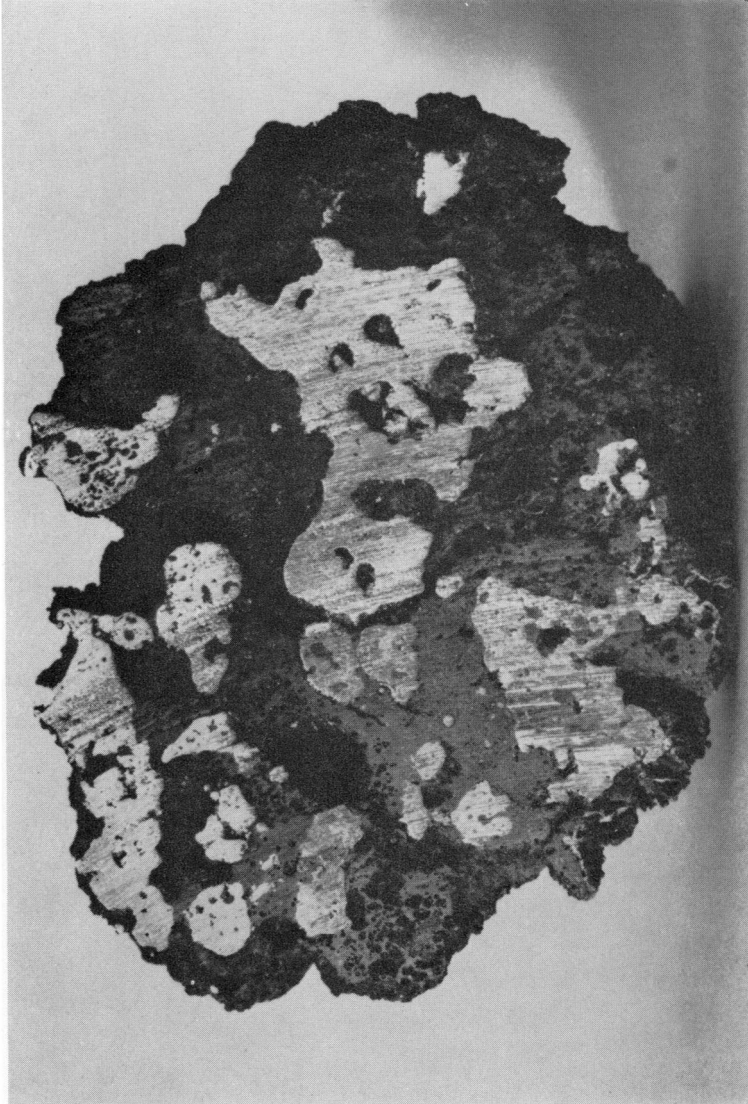


Experimental clay tuyeres, A. single.



B. double (p. 211).

PLATE XXVIII

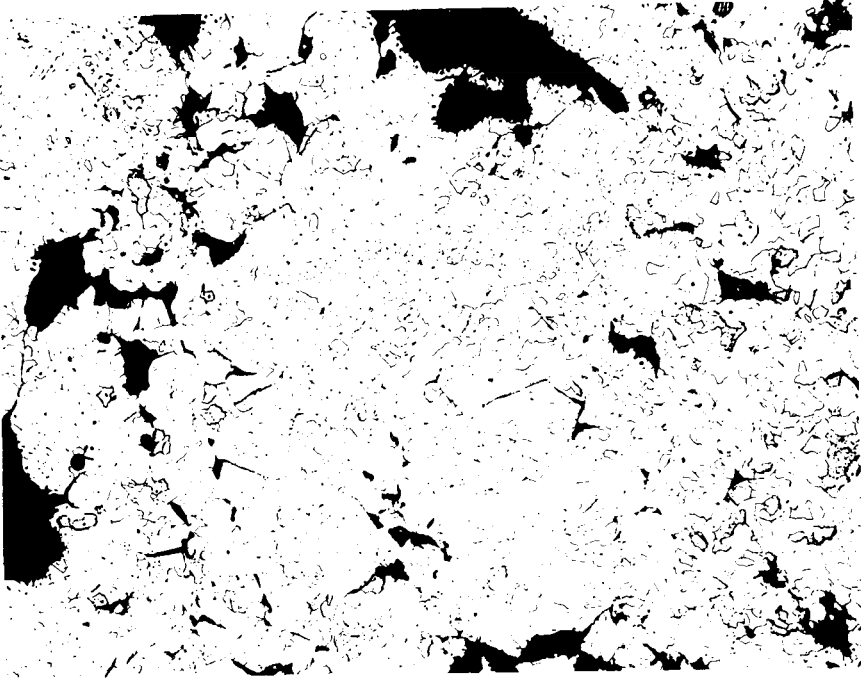


Section of bloom, light areas iron, dark areas slag (1) (p. 214).

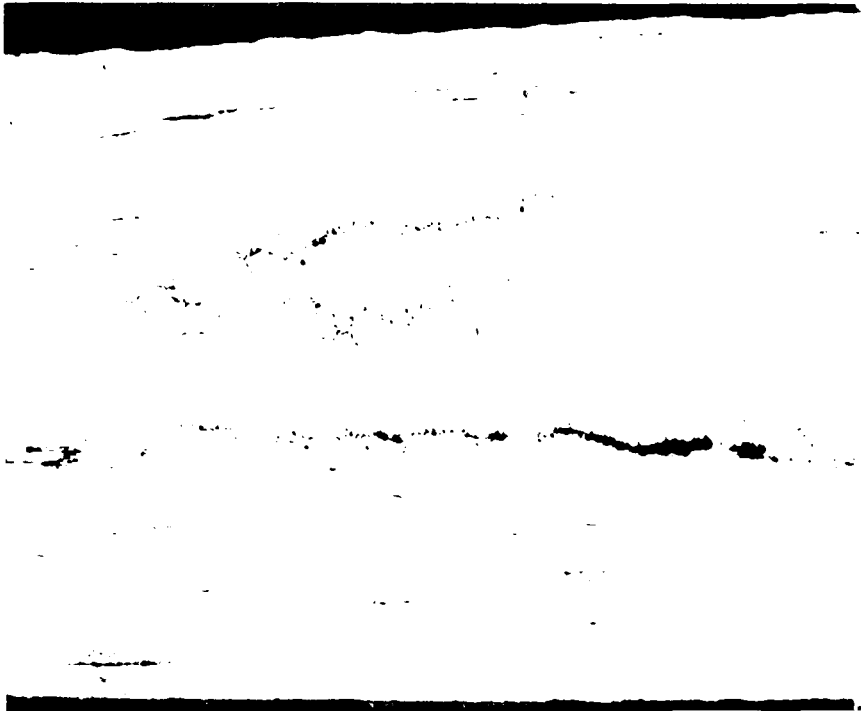
BRITANNIA, VOL. II (1971)

CLEERE, IRON MAKING IN A ROMAN FURNACE

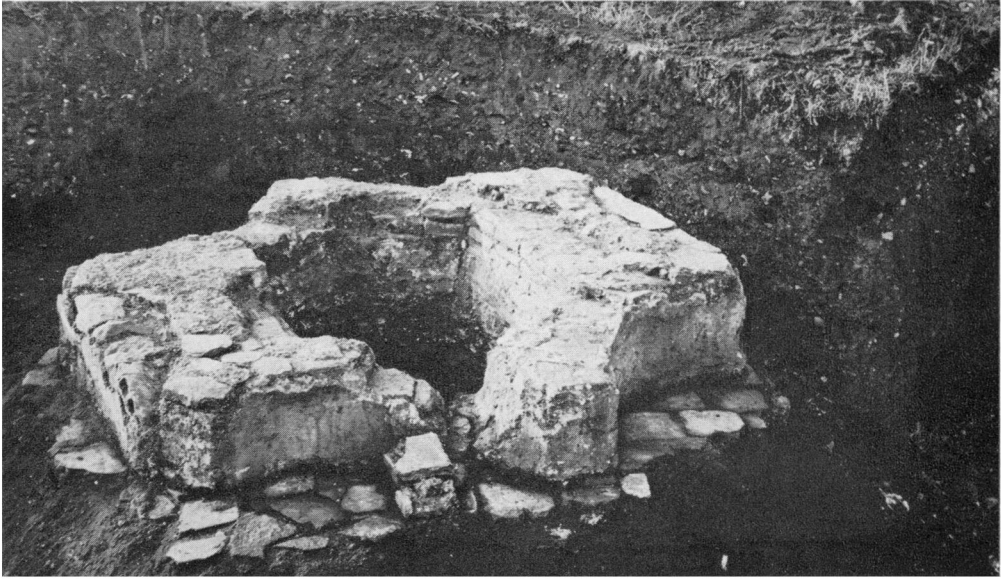
PLATE XXIX



A. Microstructure of partially worked iron ( $\times 50$ ) (p. 214).



B. Macrostructure of forged shaft ( $\times 15$ ) (p. 214).



*(Photo: Society of Antiquaries)*

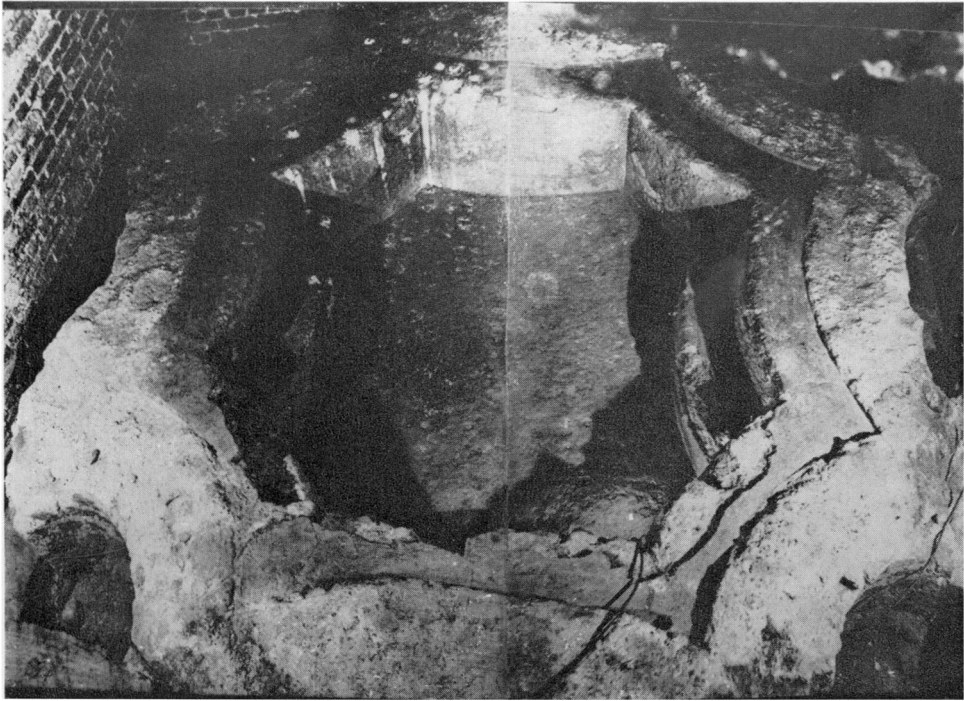
A. Hexagonal font at Richborough, from south-east showing position of outlet pipe (p. 225).



*(Photo: Society of Antiquaries)*

B. Hexagonal font at Richborough, showing the step in the blocked south niche.

PLATE XXXI



*(Photo: W. Schneider, Kölner Domausgrabung)*

A. Octagonal font at Cologne, from the east (p. 227).



*(Photo: Klein, Boppard)*

B. Heptagonal font at Boppard, from the east (p. 227).

PLATE XXXII



*(Photo: R. Laur-Belart)*

A. Rectangular font at Zurzach, showing re-lining and quarter-round moulding in the corners (p. 228).



*(Photo: Society of Antiquaries)*

B. Font and foundation blocks near the north wall at Richborough, as they appeared after removal of the surface soil in 1924 (p. 229).



PLATE XXXIII



A. Warrior God in Nottingham University Museum (p. 238). (c.  $\frac{1}{2}$ )



B. Pottery mould from Littlemore, Oxfordshire (p. 238). ( $\frac{1}{4}$ )

PLATE XXXIV



A. Banc Maes-yr-haidd, Cynwyl Gaeo, Carmarthenshire: air photograph looking south-south-west, showing aqueduct-channels supplying the Dolaucothi gold-mines (which lie outside the picture, right) (p. 244). (Photo: D. Powell)



B. Washingwells, Whickham, Northumberland: air photograph looking south-west, showing crop-marks of newly discovered fort, with a ditch-system of more than one period and a timber gate (p. 250). (Photo: N. McCord)

PLATE XXXV



(Photo: C. V. Middleton)

The Park, Lincoln: lower west gate of extended *colonia* during excavation.  
A. Looking east-north-east, with modern masonry still standing at the rear.



(Photo: Christina Colyer)

B. The same, looking south (p. 257).

PLATE XXXVI



*(Photo: H. Atkinson)*

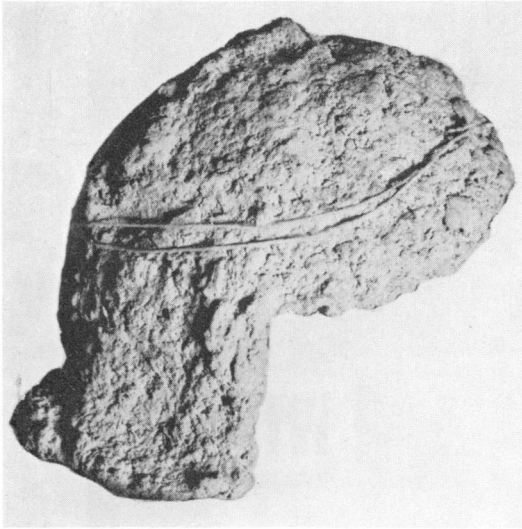
A. Barton-on-Humber, Lincs.: experimental kiln used to manufacture grey ware (scale in inches) (p. 257).



*(Photo: B. Hobley)*

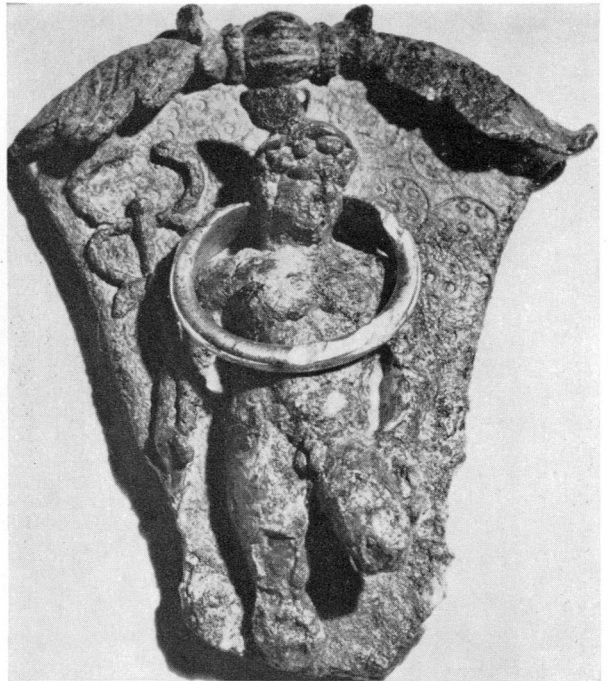
B. The Lunt, Baginton, Warwickshire: experimental reconstruction of east gate of fort on its original site (p. 262).

PLATE XXXVII



A

(Photo: J. B. Curzon)



B

(Photo: D. H. Bennett)



(Photo: D. Argent)

- A. Northwich, Cheshire: iron helmet found in a sewer-trench within the Roman fort (the fragments are held together by a modern piece of string). Scale:  $\frac{1}{4}$  (p. 256).  
 B. Caistor St. Edmund, Norfolk: bronze plaque with figure of Mercury, and silver ring (after cleaning) found together inside the Roman town. Scale:  $\frac{1}{1}$  (p. 270).  
 C. Bardwell, Suffolk: hoard of pewter dishes found in a drainage-trench, now in Moyse's Hall Museum, Bury St. Edmunds. Scale:  $\frac{1}{10}$  (p. 271).



*(Photo: by courtesy of the Grosvenor Museum, Chester)*

A. Slate slab from Chester ( $\frac{1}{8}$ ) (p. 290).



*(Photo: by courtesy of Mr. A. D. McWhirr)*

B. Fragment of Imperial Dedication from Cirencester ( $\frac{1}{4}$ ) (p. 289).



(Photo: by courtesy of Mr. L. F. Whitlam)  
A. Dedication from Malton (1) (p. 291).

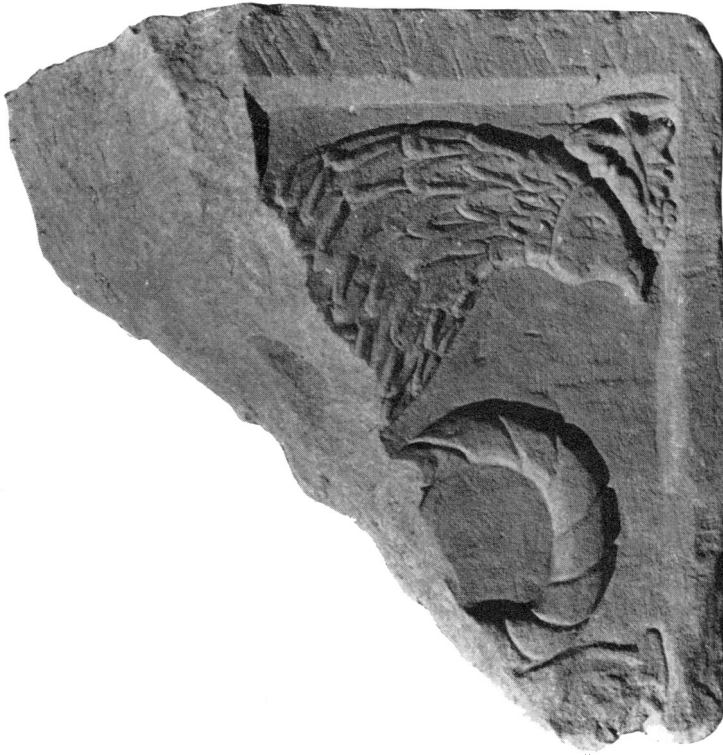
BRITANNIA, VOL. II (1971)



(Photo: by courtesy of Mr. C. Anderson)  
B. Building stone from Turret 33B (Hadrian's Wall) (4) (p. 291).

WRIGHT AND HASSALL, ROMAN BRITAIN IN 1970

PLATE XL



Inscription from South Gate of Carpow Fortress ( $\frac{1}{3}$ ) (p. 292).  
A. Right panel.



*(Photos: by courtesy of Miss H. C. Adamson)*  
B. Fragment from Last Line.



PLATE XLI



(Photo: by courtesy of the Grosvenor Museum)  
A. Dipinto on Amphora from Chester (1) (p. 294).



(Photo: by courtesy of the British Museum. Copyright reserved.)  
B. Silver Ingot from Kent (3) (p. 299).