



## Project Gallery

# A Neolithic ground stone tool as an Early Iron Age funerary gift

Bernadeta Kufel-Diakowska<sup>1,\*</sup> , Marcin Chłóń<sup>1</sup> & Justyna Baron<sup>1</sup>

<sup>1</sup> Institute of Archaeology, University of Wrocław, Poland

\* Author for correspondence ✉ [bernadeta.kufel-diakowska@uwr.edu.pl](mailto:bernadeta.kufel-diakowska@uwr.edu.pl)

The authors describe a Neolithic ground stone adze, retrieved from an Early Iron Age burial (c. 700–550 BC) at the urnfield cemetery in Miłosławice, south-western Poland. This artefact yields an interesting example of an extended tool biography.

Keywords: Poland, Neolithic, Early Iron Age, shoe-last adze, grave goods, use-wear

## Introduction

Studies of the Central European urnfield traditions (c. 1300–550/400 BC, depending on region) have brought to light interesting examples of older objects incorporated into funerary ritual. Tools made of flint or non-siliceous rocks were deposited with cremated bones and ceramic items. In this article, we present the analysis of a ground stone adze from a grave in an extensive urnfield at Miłosławice, south-west Poland. This cemetery contains burials dated to the later Bronze Age and Early Iron Age (Lasak *et al.* 2008) (Figure 1), representing funerary traditions typical for this region and these periods, and including numerous ceramic vessels and grave goods made of materials such as bronze, iron, glass, amber and flint.

## Grave no. 527 and the adze

This grave was furnished with a large vase (urn), which was covered with a ceramic plate decorated with fingerprints, and 25 smaller vessels (Figure 2A). The pottery can be dated to Hallstatt C (750–550 BC) based on its style and decoration (e.g. geometrical motifs burnished on the inner surface of the bowls). Although the shape of the grave pit was irregular, the vessels were arranged in a line, suggesting the presence of another structure, possibly a chamber. The urn contained the cremated bones of an adult (561g) and an animal (21g) (Dąbrowski & Szczurowski 2008). The ground stone adze was placed to the right of the urn. It is a tool type characteristic of the Linear Pottery Culture (*Linearbandkeramik*, hereafter LBK; c. 5600–4900/4800 BC in south Poland) toolkit.

The adze represents one of two types observed in the LBK: a low variant of a shoe-last adze, with a height-to-width ratio of less than 1:1, a typically plano-convex cross-section

---

Received: 22 April 2022; Revised: 16 August 2022; Accepted: 30 August 2022

© The Author(s), 2022. Published by Cambridge University Press on behalf of Antiquity Publications Ltd. This is an Open Access article, distributed under the terms of the Creative Commons Attribution licence (<https://creativecommons.org/licenses/by/4.0/>), which permits unrestricted re-use, distribution, and reproduction in any medium, provided the original work is properly cited.

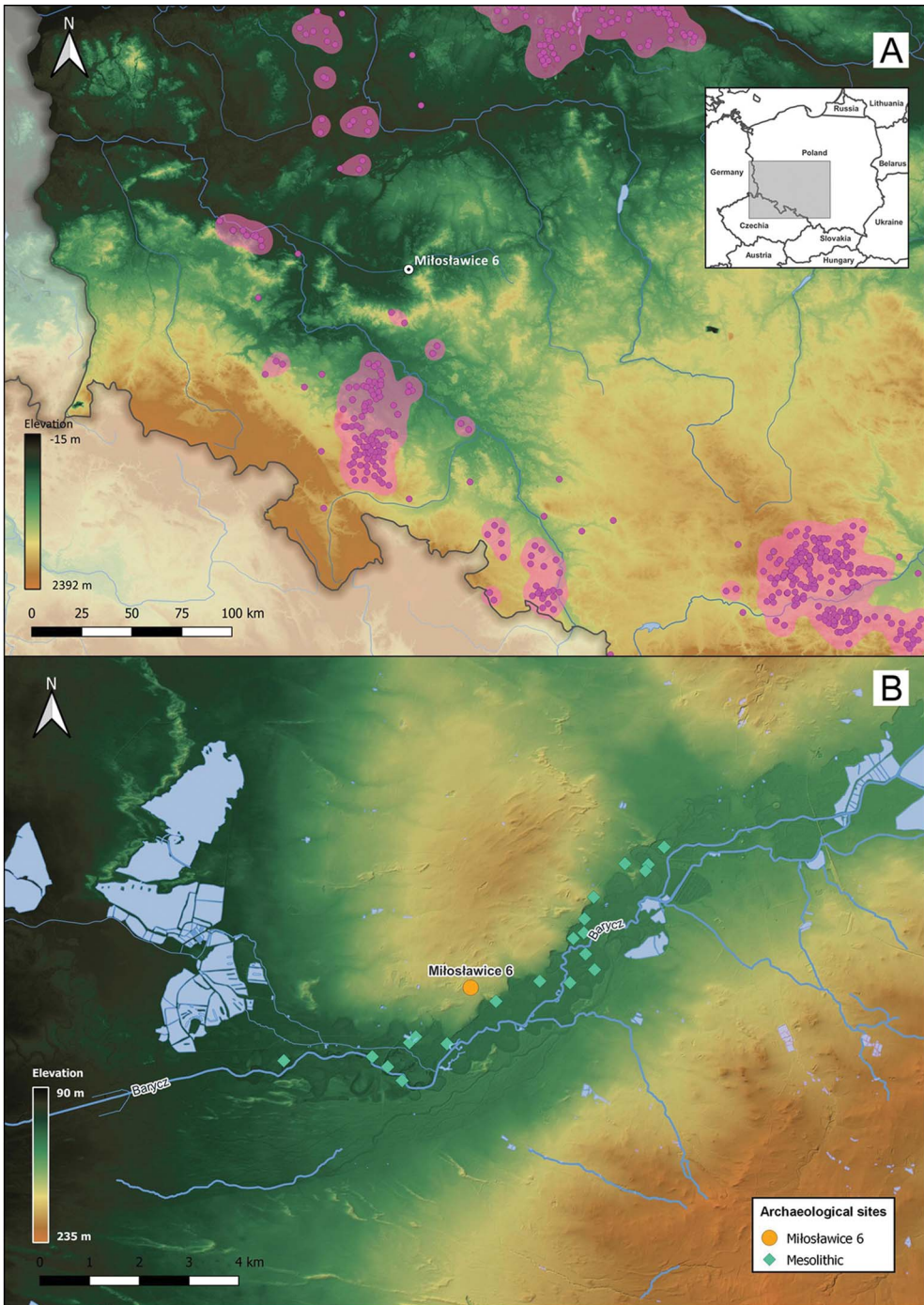


Figure 1. Location of the Miłostawice 6 site: A) distribution of Neolithic Linear Pottery Culture sites (pink dots); B) selected Mesolithic sites (green rhombuses) (drawn by M. Chłóń).

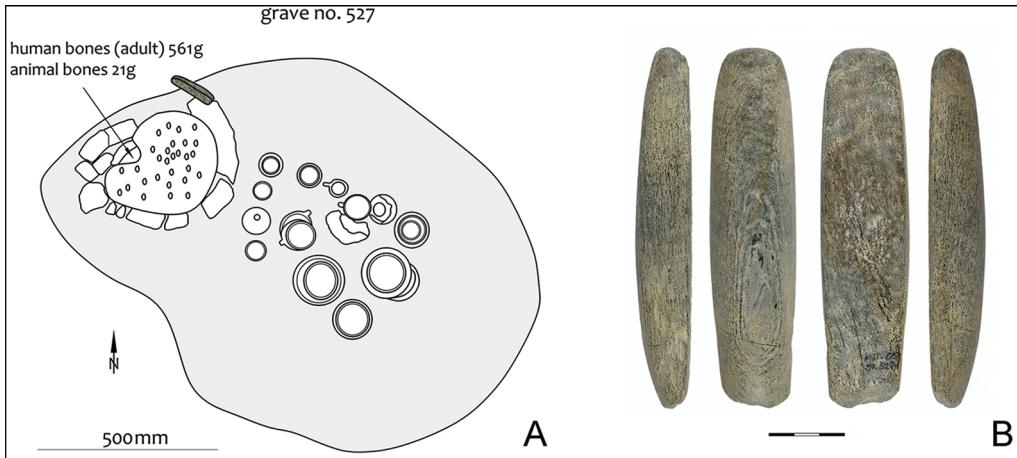


Figure 2. Grave no. 527 (A) and the shoe-last adze (B) from Miłosławice (scale in cm) (drawn by J. Baron; photograph by Ł. Melski).

and parallel sides (Czekaj-Zastawny 2017: 49). The adze is complete and measures  $142 \times 33.6 \times 22.6$  mm (Figure 2B). It was produced from Jizera Mountains-type metabasite from outcrops located in the Bohemian Massif, approximately 200km south-west of Miłosławice (M. Borowski, *pers. comm.*).

## Methods

Macro- and micro-traces were analysed to identify the stages of manufacture, utilisation and reuse using an Olympus SZX9 stereomicroscope (6.3–114 $\times$ ), a Nikon ECLIPSE LV100 metallographic microscope (50–500 $\times$ ) and a Nikon Digital Microscope ShuttlePix P-400R. The raw material was identified macroscopically using a Kappameter KM-7.

## Results

Evidence of production is limited to flake negatives relating to final flaking of the butt (Figure 3D) and traces of grinding on the upper surface. The latter display as linear grain extractions parallel to the main axis (Figure 3A). The bottom surface displays extreme levelling (Figure 3B), as well as a bright, matt gloss without any clear direction (Figures 3C & 3F). A similar gloss, resulting from polishing and hafting, is visible on both lateral edges. No linear traces of whetting were recorded on the flat bottom surface. Nonetheless, the central part is damaged and exhibits a concentrated area of irregular grain extractions (Figure 3G). The original cutting edge was removed via secondary activity involving striking from the upper side, which prevents identification of the tool's original function. This striking activity produced large flake negatives with coarse surfaces, consequently providing the cutting-edge with an irregular profile (Figure 3E). The butt is rounded but does not bear any traces of use (Figure 3H).



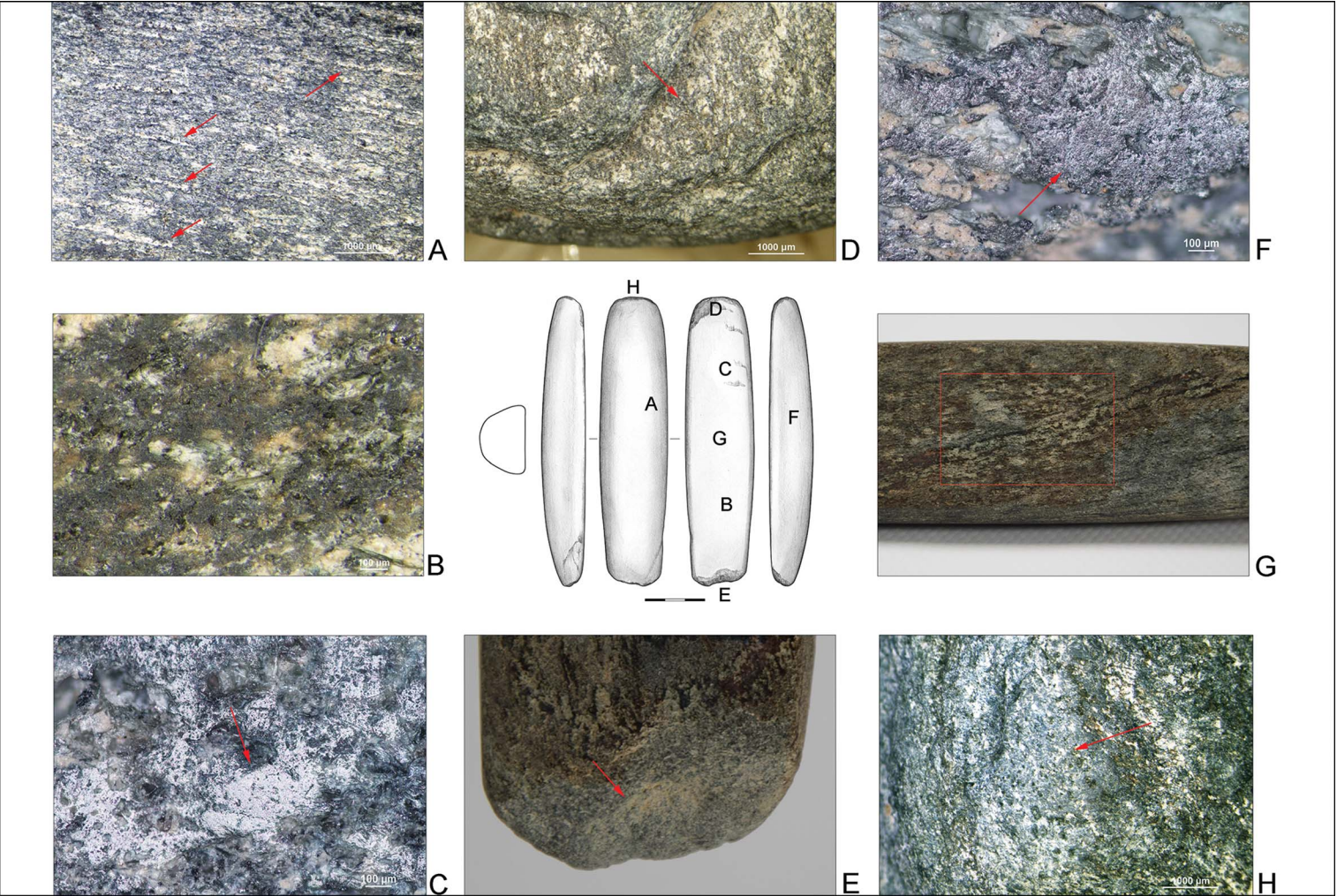


Figure 3. Shoe-last adze from Mitoslawice (drawn by N. Lenkow). Traces of production and use (marked with red arrows and box): A) linear grain extractions; B) surface levelling; C) bright polish; D) flaking scars; E) secondary negatives; F) matt polish; G) grain removal on surface; H) butt rounding (photographs by B. Kufel-Diakowska).

## Discussion

The question we must answer now is how did the tool come into the possession of Early Iron Age people? This is not an isolated phenomenon, as Neolithic tools are frequent finds within Iron Age burials in Poland (see Gackowski & Osipowicz 2013). In addition, a similar specimen has been recovered from a Late Bronze Age grave at Battaune, in present-day Germany (Schmalfuß 2008).

As mentioned above, the Miłosławice adze was made from Jizera Mountains-type metabasite, which is comparable to most of the adzes so far found in Central European LBK contexts (Krystek *et al.* 2011; Verhart 2012; Borowski 2019). Although metabasite mining is known to have occurred in the Hallstatt C and D periods (*c.* 750–400 BC), the use and distribution of metabasite ground tools has only been confirmed for LBK and post-LBK cultures (Přichystal 2013). Přichystal (2013) suggests that such adzes were manufactured at workshops near the outcrops and distributed as finished tools. Both pre-forms and flakes, however, have been identified at LBK sites in south Poland (Wojciechowski & Cholewa 1995; Czekaj-Zastawny 2017) (Figure 4); thus, local manufacture cannot be ruled out.

The tool, therefore, was almost certainly retrieved from an earlier context. Complete, low variants of shoe-last adzes do not occur in the LBK assemblages in south-west Poland, however (Wojciechowski & Cholewa 1995; Kulczycka-Leciejewiczowa 1997). The closest comparisons to this type of tool originate from LBK cremation graves near Kraków, around 300km south-east of Miłosławice (Czekaj-Zastawny 2017). They are suggested to have

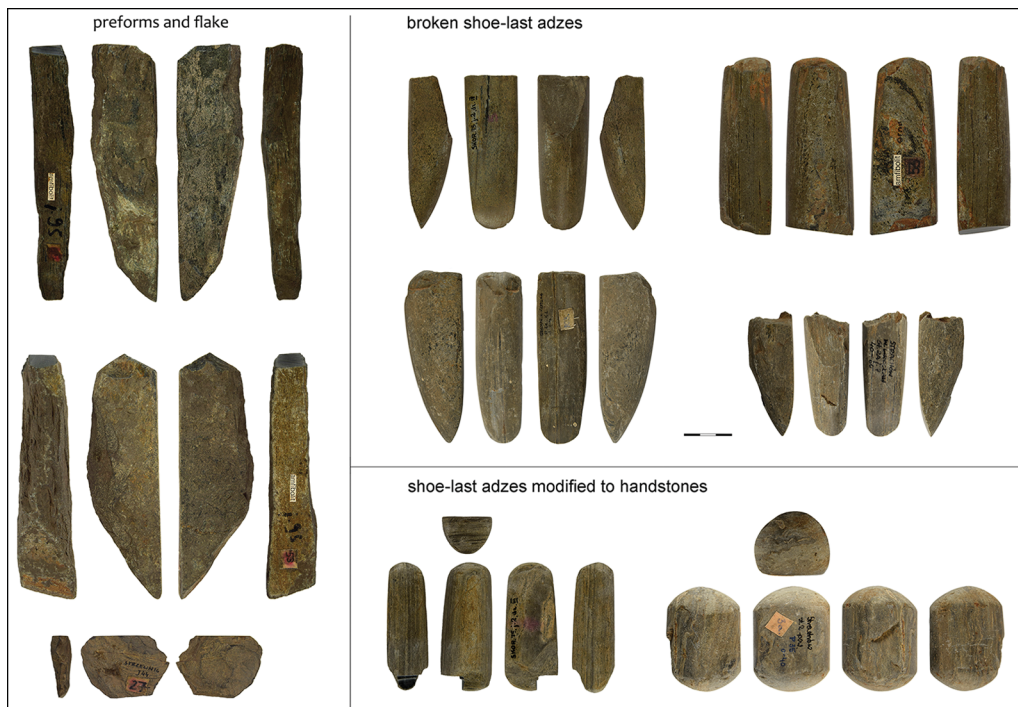


Figure 4. Examples of pre-forms and shoe-last adzes from south-western Poland (photographs by Ł. Melski).

been used for woodworking or preparing land for cultivation, including felling trees and ploughing (Verhart 2012; Elburg *et al.* 2015; Czekaj-Zastawny 2017). Although the primary function of the Miłosławice adze is impossible to determine, the hafting polish may suggest its use during the Neolithic period. Thereafter, the tool was subjected to secondary modification. Its cutting edge, however, displays atypical damage when compared with other exhausted LBK adzes, which are most often transversally broken or reused as handstones for grinding (Figure 4).

We must also consider indirect acquisition from outside of a Neolithic context. Szydłowski (2017: 101) reports examples from Poland of LBK metabasite adzes being modified to form Eneolithic ground stone axes. Miłosławice, however, lies outside the main LBK settlement zones within Poland (Figure 1) and is located near few Eneolithic sites (Kulczycka-Leciejewiczowa 1993: supplementary material). Instead, Miłosławice is situated in a dune landscape that was densely settled in the Mesolithic. Despite the scarcity of local data confirming close ties between hunter-gatherers and the first farmers, evidence from Central and North-west Europe (Devriendt 2014) indicates the existence of bilateral contacts, including an LBK stone adze found in a Mesolithic grave in Germany (Lenneis 2007). Thus, it is possible that a Mesolithic community might have obtained the Miłosławice adze through exchange. After its use and deposition, Early Iron Age people have retrieved it and finally utilised it for funeral purposes. While this latter explanation is thought to be most likely, contacts between the Late Mesolithic Komornica Culture and the LBK need to be further explored.

## Funding statement

This study is part of a project supported by the National Science Centre, Poland (2020/38/E/HS3/00285).

## References

- BOROWSKI, M. 2019. Rola petroarcheologii w badaniach nad młodszą epoką kamienia na Śląsku, in M. Furmanek (ed.) *Pierwsi rolnicy i hodowcy na Śląsku. Dialog interdyscyplinarny*: 387–422. Wrocław: Instytut Archeologii Uniwersytetu Wrocławskiego.
- CZEKAJ-ZASTAWNY, A. 2017. The first farmers from the south: Linear Pottery Culture, in P. Włodarczak (ed.) *The past societies: Polish lands from the first evidence of human presence to the early Middle Ages. Volume 2: 5500–2000 BC*: 21–62. Warszawa: Institute of Archaeology and Ethnology, Polish Academy of Sciences.
- DĄBROWSKI, P. & J. SZCZURÓWSKI. 2008. Przepalone szczątki kostne z cmentarzyska kultury łużyckiej w Miłosławicach, pow. Milicz: sezon 2005. *Śląskie Sprawozdania Archeologiczne* 50: 145–54.
- DEVRIENDT, I. 2014. *Swifterbant stones. The Neolithic stone and flint industry at Swifterbant (the Netherlands): from stone typology and flint technology to site function* (Groningen Archaeological Studies 25). Groningen: Barkhuis and Groningen University Library. <https://doi.org/10.2307/j.ctt2204s3t>
- ELBURG, R. *et al.* 2015. Field trials in Neolithic woodworking: (re)learning to use Early Neolithic stone adzes, in R. Kelm (ed.) *Archaeology and crafts: experiences and experiments on traditional skills and handicrafts in archaeological open-air museums in Europe. Proceedings of the 6<sup>th</sup> OpenArch-conference in Albersdorf, Germany, 23–27 September 2013*: 62–77 (Albersdorfer Forschungen zur Archäologie und Umweltgeschichte Band 5). Husum: AÖZA.



- GACKOWSKI, J. & G. OSIPOWICZ. 2013. Przedmioty krzemienne z osady obronnej ludności kultury łużyckiej w Mirakowie-Grodnie (stanowisko 6), pow. Toruń. *Fontes Archaeologici Posnaniense* 49: 177–92.
- KRYSTEK, M. *et al.* 2011. Neolithic tools made of the Jizerské Hory-type metabasites (Bohemian Massif) from the area of Poland. *Biuletyn Państwowego Instytutu Geologicznego* 444: 113–24.
- KULCZYCKA-LECIEJEWICZOWA, A. 1993. *Osadnictwo neolityczne w Polsce południowo-zachodniej: próba zarysu organizacji przestrzennej*. Wrocław: Instytut Archeologii i Etnologii Polskiej Akademii Nauk.
- 1997. *Strachów: osiedla neolitycznych rolników na Śląsku*. Wrocław: Instytut Archeologii i Etnologii Polskiej Akademii Nauk.
- LASAK, I. *et al.* 2008. Badania na cmentarzysku kultury łużyckiej w Miłosławicach, pow. Milicz, w 2005 roku (jedenasty sezon). *Śląskie Sprawozdania Archeologiczne* 50: 133–44.
- LENNEIS, E. 2007. Mesolithic heritage in Early Neolithic burial rituals and personal adornments. *Documenta Praehistorica* 34: 129–37. <https://doi.org/10.4312/dp.34.9>
- PŘICHYSTAL, A. 2013. *Lithic raw materials in prehistoric times of eastern-central Europe*. Brno: Masaryk University.
- SCHMALFUß, G. 2008. Das Gräberfeld Battaune, Kr. Delitzsch in Sachsen: ein jüngstbronzezeitliches Gräberfeld der Lausitzer Kultur. Die Ergebnisse der Grabungen von 1974/75. *Leipziger online-Beiträge zur Ur- und Frühgeschichtlichen Archäologie* 29. Available at: <https://nbn-resolving.org/urn:nbn:de:bsz:15-qucosa2-340050> (accessed 29 May 2019).
- SZYDŁOWSKI, M. 2017. *Użytkowanie surowców skalnych na obszarach poglądalnych Polski w neolicie i początkach epoki brązu*. Gdańsk: Early Bronze Age Publishing.
- VERHART, L. 2012. Contact in stone: adzes, Keile and Spitzhauen in the Lower Rhine Basin. Neolithic stone tools and the transition from Mesolithic to Neolithic in Belgium and the Netherlands, 5300–4000 cal BC. *Journal of Archaeology in the Low Countries* 4(1): 5–35.
- WOJCIECHOWSKI, W. & P. CHOLEWA. 1995. *Osady najwcześniejszych rolników i hodowców na stanowisku 16 w Strzelinie* (Studia Archeologiczne 27, Acta Universitatis Wratislaviensis 1810). Wrocław: Instytut Archeologii Uniwersytet Wrocławski.