

# THE POLAR RECORD

Edited by F. DEBENHAM

Volume 4  
NUMBER 27:  
JANUARY 1944

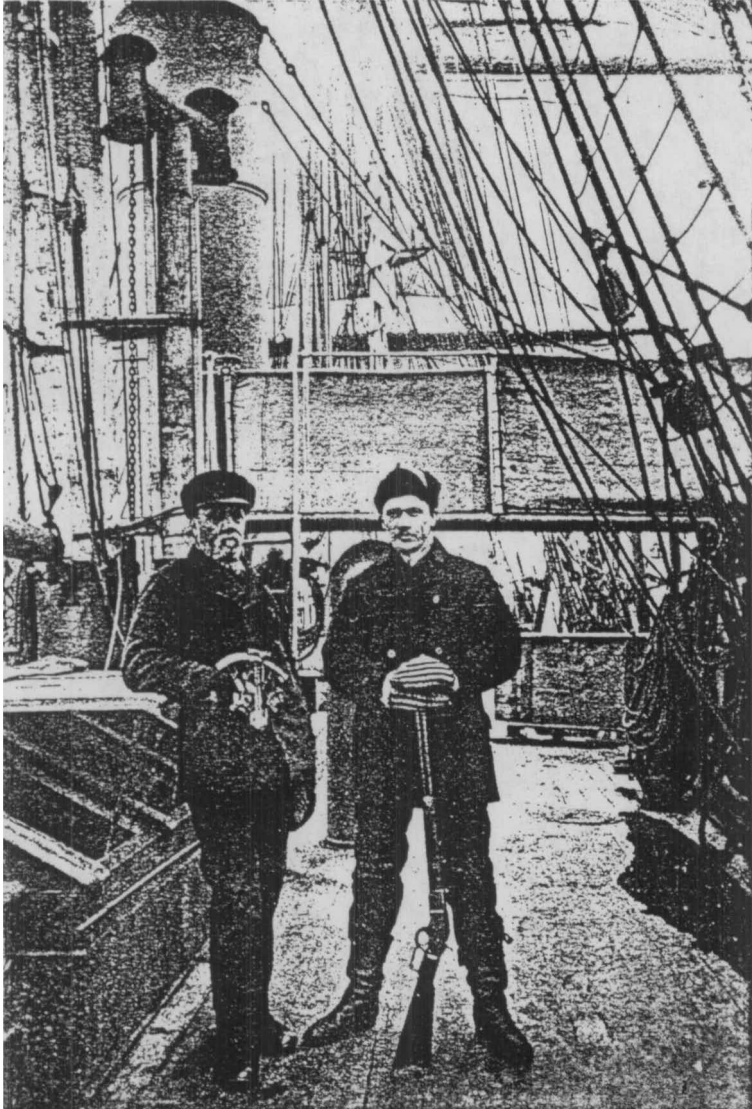
PRINTED IN GREAT BRITAIN FOR  
THE SCOTT POLAR RESEARCH INSTITUTE  
CAMBRIDGE: AT THE  
UNIVERSITY  
PRESS

1944

*Price Two Shillings and Sixpence*

## CONTENTS

FRONTISPIECE . . . . .	David Gray and R. W. Gray	
FOREWORD . . . . .		page 99
EXPEDITIONS:		
Danish North-East Greenland Expedition, 1938-39, and subsequent work at the Mørkefjord Station, 1939-42 . . . . .		100
Patrols of the Royal Canadian Mounted Police, 1941 . . . . .		105
Patrols of the Royal Canadian Mounted Police, 1942 . . . . .		108
The Voyage of the <i>Nouveau Québec</i> , 1939 . . . . .		112
Ascent of Mount McKinley, 1942 . . . . .		113
Lincoln Ellsworth's Antarctic Expedition, 1938-39 . . . . .		114
ARTICLES:		
The Voyage of the <i>St Roch</i> through the North-West Passage, 1940-42 . . . . .		115
Captain William Adams and Dr R. W. Gray. By J. M. Wordie . . . . .		119
Sound Effects in Polar Conditions. By Brian Roberts . . . . .		123
Sea Ice: Terminology, Formation and Movement . . . . .		126
NOTES:		
Voyages through the North-West Passage . . . . .		134
The Development of Civil Aviation in the American Far North . . . . .		134
The Population of Alaska in 1939 . . . . .		137
The Exploration of Mountains near the Alaska Highway . . . . .		138
The Mudding of Sledge Runners . . . . .		139
Freezing of Breath at Low Temperatures . . . . .		141
Movements of the Discovery Committee's Ships in the Falkland Islands Dependencies, 1926-38 . . . . .		141
REVIEWS:		
The Place Names of Svalbard . . . . .		143
Geographical Narrative and Cartography. <i>Scientific Reports, Austral-     asian Antarctic Expedition, 1911-14</i> . . . . .		143
OBITUARIES . . . . .		145
RECENT POLAR LITERATURE . . . . .		147
ERRATUM . . . . .		154



DAVID GRAY (*left*) and R. W. GRAY (*right*)  
(*See pp. 119–22*)  
on board the *Eclipse*, 1888.