

Three-dimensional sedimentation patterns of two interacting disks in a viscous fluid

Yi Liu¹, Yu Guo^{1,†}, Bo Yang², Dingyi Pan¹, Zhenhua Xia¹, Zhaosheng Yu¹
and Lian-Ping Wang^{2,†}

¹Department of Engineering Mechanics, State Key Laboratory of Clean Energy Utilization, Zhejiang University, Hangzhou 310027, PR China

²Department of Mechanics and Aerospace Engineering, Southern University of Science and Technology, Shenzhen 518055, PR China

(Received 16 March 2022; revised 27 December 2022; accepted 20 February 2023)

The sedimentation of two spherical solid objects in a viscous fluid has been extensively investigated and well understood. However, a pair of flat disks (in three dimensions) settling in the fluid shows more complex hydrodynamic behaviour. The present work aims to improve the understanding of this phenomenon by performing direct numerical simulation and physical experiments. The present results show that the sedimentation processes are significantly influenced by disk shape, characterized by a dimensionless moment of inertia I^* , and Reynolds number Re of the leading disk. For the flatter disks with smaller I^* , steady falling with enduring contact transits to periodic swinging with intermittent contacts as Re increases. The disks with larger I^* tend to fall in a drafting-kissing-tumbling mode at low Re and to remain separated at high Re . Based on I^* and Re , a phase diagram is created to classify the two-disk falling into ten distinctive patterns. The planar motion or three-dimensional motion of the disks is determined primarily by Re . Turbulent disturbance flows at a high Re contribute to the chaotic three-dimensional rotation of the disks. The chance for the two disks to contact is increased when I^* and Re are reduced.

Key words: particle/fluid flow

1. Introduction

Sedimentation of particles in a fluid is ubiquitous in industrial applications and environmental processes, such as industrial waste treatment, coal-water slurry transport, proppant transport in hydraulic cracking, soot particle dispersion, falling of leaves and settling of sand in a river. Understanding the falling patterns is helpful to predict

† Email addresses for correspondence: yguo@zju.edu.cn, wanglp@sustech.edu.cn

particle trajectories and final locations of the settling particles. Unfortunately, the falling patterns are rather complex due to fluid–particle and particle–particle interactions. Thus, extensive studies have been performed to reveal the underlying mechanism of the particle sedimentation in a fluid.

Fortes, Joseph & Lundgren (1987) observed two spheres settling in a pattern of drafting-kissing-tumbling (DKT) in their experiments, demonstrating the strong hydrodynamic interactions between the particles. In the two-dimensional (2-D) numerical simulations of two circular particles falling in a long narrow channel (Aidun & Ding 2003), effects of confinement from the channel walls on dynamics of the particles are significant as the width of channel L_w is only four times the particle diameter d_p . The particle motion is driven by a dimensionless weight of a particle, $W^* = \pi G_a(\rho_r - 1)/4$, in which G_a is the Galileo number ($G_a = d_p^3 g / \nu_f^2$, g is the gravitational acceleration and ν_f is the kinematic viscosity of the fluid) and ρ_r is the density ratio of particle to fluid. Under the channel boundary confinement of $L_w/d_p = 4$, the falling styles of the particles are controlled by the parameter W^* . An increase in W^* from 100 to 200 leads to an increase in particle terminal Reynolds number Re from 2 to 5. In this regime, as W^* increases, the initial periodic state of the horizontal particle motion transits to another periodic branch. Further increase in W^* results in a cascade of period-doubling bifurcations to a chaotic state represented by a low dimensional chaotic attractor (Aidun & Ding 2003). For $200 < W^* < 400$, corresponding to $6 < Re < 10$, the pair of particles fall in the DKT pattern (Feng & Joseph 1995). At the large driving forces, i.e. $400 < W^* < 500$, the two particles tend to form a horizontal structure, causing the maximum effective blockage ratio. The falling speeds are reduced and the particle Reynolds numbers return to the range $5 < Re < 7$. Then, the DKT vanishes and the settling experiences a quasi-periodic transition to the chaotic state by increasing the driving force (Verjus *et al.* 2016). To estimate the particle–particle contact duration, a scaling law was proposed by Li *et al.* (2020), considering the effects of particle–fluid density ratio, fluid viscosity, interparticle friction, and adhesive force.

Various factors can affect the sedimentation patterns. After removing the rotational degrees of freedom of the particles, the lateral migration still occurred but the divergent particle oscillation disappeared, making the particles fall with a steady oblique or horizontal structure at smaller terminal Reynolds numbers (Zhang *et al.* 2018). Sedimentation of two unequal particles of different sizes and densities was numerically investigated (Nie & Lin 2020; Nie, Guan & Lin 2021). A pattern of horizontal oscillatory motion, characterized by a structure with a large and light particle above a small and heavy one and strong oscillations of both particles in the horizontal direction, was observed for diameter ratio of 0.3 at intermediate Reynolds numbers, and the magnitude of oscillations decreased with an increase in the density ratio (Nie *et al.* 2021). In three-dimensional (3-D) sedimentation of two spheres of different densities in a square tube, the spheres oscillated in the central plane of the tube at high Galileo numbers (G_a); while at low G_a , the spheres moved to one of the diagonal planes of the tube, reaching a steady or periodic state depending on the density difference between them (Nie & Lin 2020).

The sedimentation of particles in a fluid exhibits a strong dependence on particle shape. The simulation results by Fornari, Ardekani & Brandt (2018) showed that the mean settling speed of oblate particles was significantly higher than that of spheres in dilute suspensions at the solid volume fractions of 0.5–1 %, due to the formation of columnar-like clusters of the oblate particles. The early experimental observations of a single disk falling in a quiescent viscous fluid by Willmarth, Hawk & Harvey (1964) and Field *et al.* (1997) demonstrated the remarkable effect of particle shape, which was characterized by a dimensionless moment of inertia (the ratio of the moment of inertia of a thin disk about its

diameter I_d and a quantity proportional to the moment of inertia of a rigid sphere of fluid about its diameter):

$$I^* = \frac{I_d}{\rho_f d_c^5} = \frac{\pi \rho_s l_c}{64 \rho_f d_c} + \frac{\pi \rho_s l_c^3}{48 \rho_f d_c^3}, \quad (1.1)$$

in which ρ_s and ρ_f are the densities of the solid disk and fluid, respectively; and l_c and d_c are the thickness and diameter, respectively, of the disk. For the very thin disks, the thickness l_c is much smaller than d_c , thus, the second term, i.e. $\pi \rho_s l_c^3 / (48 \rho_f d_c^3)$, on the right-hand side of the equal sign in (1.1) was neglected in the previous work (Willmarth *et al.* 1964; Field *et al.* 1997; Zhong, Chen & Lee 2011). The falling pattern was also dependent on the terminal Reynolds number Re of the disk, which was calculated from the mean vertical velocity of the disk during the sedimentation (excluding the initial acceleration stage). Based on I^* and Re , Field *et al.* (1997) classified the falling processes of a single disk into four distinct styles: steady falling, periodic, chaotic and tumbling. A steady falling pattern occurred at low Re . At high Re , a disk with a smaller dimensionless moment of inertia I^* settled periodically; as I^* increased, the falling pattern transitioned from the periodic to the chaotic and then to the tumbling. With more experimental observations, Zhong *et al.* (2011) partitioned the periodic falling pattern further into three sub-modes: planar zigzag, transitional and spiral. It was believed that the transition from the 2-D zigzag motion to the 3-D spiral motion occurred due to the growth of 3-D disturbances (Lee *et al.* 2013). In their numerical simulations, Auguste, Magnaudet & Fabre (2013) observed two additional 3-D sedimentation patterns in which the disk experienced a slow horizontal precession superimposed on zigzagging or tumbling motions. For the infinitely thin disks with very small I^* , Chrust, Bouchet & Dušek (2013) created a comprehensive phase diagram of transition scenarios of the different settling types, based on the Galileo number and a dimensional mass. The hydrodynamics and typical nonlinear paths of various non-spherical bodies freely falling or rising in fluids were systematically reviewed by Ern *et al.* (2012).

The interaction of two identical disks falling in tandem in a fluid was experimentally investigated by Brosse & Ern (2011, 2014). It was observed that the trailing body would catch up to the leading one for vertical separation distances up to 14 diameters under the condition of a horizontal separation distance less than 0.5 diameters. The wake of the leading body had an impact on the fluid drag force exerted on the trailing one, depending on the distance between them. Thick disks separated laterally after the collision and eventually fell side by side. At low Re of 115 and 152, thinner disks formed a steady Y -configuration by contacting each other and fell together in rectilinear paths as the wakes of the two bodies merged, creating strong interbody attraction. Such steady falling with a small relative inclination between the two bodies was also obtained in the numerical simulations of the sedimentation of two oblate ellipsoids (Ardekani *et al.* 2016). At higher Re of 255 and 275, the thinner disks exhibited inclined periodic motions with the relative distance and inclination of the bodies fluctuating in time. The periodic vortex shedding played a role in the oscillatory motions of the two disks. In addition, the inhomogeneity of the wake of the leading body destabilized the wake of the trailing one, amplifying the oscillation of the trailing one. In the experiments of two identical disks falling side by side in a fluid at rest for Re ranging from 100 to 300 (Ern & Brosse 2014), the two disks repelled each other at the smaller horizontal separation distances and they appeared to move independently at the larger horizontal distances. In the case of oscillatory paths, no synchronization was observed between the paths and between the wakes of the two disks. A repulsion coefficient, which is proportional to the magnitude of repulsion force,

was found to decrease with the horizontal separation distance and increase with the thickness-to-diameter ratio of the disks.

Compared to the sedimentation of a pair of circular particles (2-D) and spheres (3-D), the hydrodynamic behaviour of a pair of 3-D disks settling in a viscous fluid is much less understood. In this work, a lattice Boltzmann method (LBM) and a cylindrical particle discrete element method (DEM) are combined to simulate sedimentations of a pair of disks in a Newtonian viscous fluid for a comprehensive understanding of such processes. Corresponding physical experiments are also conducted to verify the simulation results and to complement the investigations. The disks of various dimensionless moments of inertia I^* are used in the simulations and experiments. The falling motions of the disks are analysed and classified for wide ranges of I^* (0.006–0.14) and Re (5–1000). Phase diagrams are eventually drawn to determine falling patterns and contact styles of the two interactive disks based on I^* and Re .

2. Methodology

In the coupled LBM-DEM method, the flow field is solved by the LBM, which was developed by Wang *et al.* (2016) based on the lattice Boltzmann method coupled with a proper treatment of the moving fluid–solid interface (Peng *et al.* 2016). The dynamics and interactions of the disks are modelled by the cylindrical particle DEM, which was implemented by Guo *et al.* (2012b). The momentum exchange method (Wen *et al.* 2014) is used to calculate the fluid–disk interaction forces with the disk surfaces treated as no-slip boundaries by an interpolated bounce-back scheme (Bouzidi, Firdaouss & Lallemand 2001).

2.1. Lattice Boltzmann method

The multi-relaxation time (MRT) LBM (D’Humières 2002) is used to solve the evolution of mesoscopic velocity distribution function:

$$f(\mathbf{x} + \mathbf{e}_\alpha \delta_t, t + \delta_t) = f(\mathbf{x}, t) - \mathbf{M}^{-1} \cdot \mathbf{S} \cdot [\mathbf{m} - \mathbf{m}^{(eq)}] + \mathbf{Q} \delta_t, \quad (2.1)$$

where f is the particle distribution function for the discrete velocity \mathbf{e}_α in the α th direction at the position \mathbf{x} and time t , δ_t is the lattice time step, \mathbf{M} is an orthogonal transformation matrix that relates the distribution function f and moment space \mathbf{m} as $\mathbf{m} = \mathbf{M} \cdot f$ and $f = \mathbf{M}^{-1} \cdot \mathbf{m}$, $\mathbf{m}^{(eq)}$ represents the equilibrium distribution of the moment space \mathbf{m} , and \mathbf{S} is the diagonal relaxation matrix which specifies relaxation rates for non-conservative moments. Forcing field \mathbf{Q} (Guo, Zheng & Shi 2002) applies a body force to the fluid and the α th component of \mathbf{Q} is calculated as

$$Q_\alpha = \omega_\alpha \left[\frac{\mathbf{e}_\alpha \cdot \mathbf{F}}{c_s^2} + \frac{\mathbf{F} \mathbf{u} : (\mathbf{e}_\alpha \mathbf{e}_\alpha - c_s^2 \mathbf{I})}{c_s^4} \right], \quad (2.2)$$

in which ω_α represents a weight coefficient along the α th direction, \mathbf{F} is an external force vector, \mathbf{u} is the macroscopic fluid velocity vector, the sound speed c_s is equal to $1/\sqrt{3}$ in lattice unit and \mathbf{I} is an identity matrix.

Fluid density ρ , pressure p and velocity vector \mathbf{u} are the macroscopic variables, which can be obtained from the mesoscopic distribution function f . For the incompressible flows,

Three-dimensional sedimentation patterns

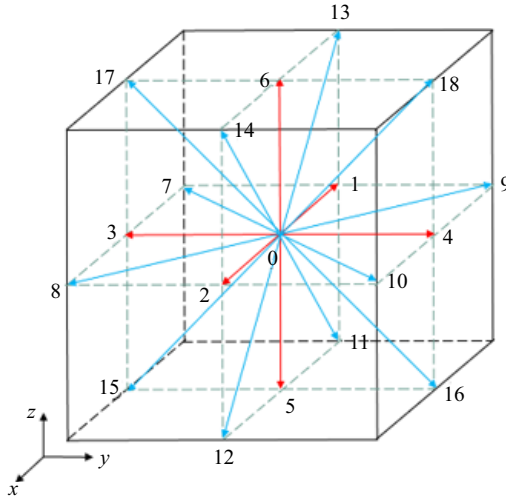


Figure 1. An illustration of the D3Q19 model.

they have the forms (He & Luo 1997)

$$\rho = \rho_0 + \delta\rho, \quad (2.3)$$

in which

$$\rho_0 = 1 \quad \text{and} \quad \delta\rho = \sum_{\alpha} f_{\alpha}, \quad (2.4a,b)$$

$$p = \delta\rho c_s^2, \quad (2.5)$$

$$\rho_0 \mathbf{u} = \sum_{\alpha} f_{\alpha} \mathbf{e}_{\alpha} + \frac{\delta t}{2} \rho_0 \mathbf{F}. \quad (2.6)$$

As shown in figure 1, the 19-velocity model in three dimensions, i.e. the D3Q19 model, is adopted for the discrete velocities, which are written as

$$\mathbf{e}_{\alpha} = \begin{cases} (0, 0, 0) & \alpha = 0, \\ (\pm 1, 0, 0), (0, \pm 1, 0), (0, 0, \pm 1) & \alpha = 1, 2, \dots, 6, \\ (\pm 1, \pm 1, 0), (\pm 1, 0, \pm 1), (0, \pm 1, \pm 1) & \alpha = 7, 8, \dots, 18. \end{cases} \quad (2.7)$$

Thus, the weight coefficient ω_{α} is determined as

$$\omega_{\alpha} = \begin{cases} 1/3, & e_{\alpha}^2 = 0 \\ 1/18, & e_{\alpha}^2 = 1 \\ 1/36, & e_{\alpha}^2 = 2 \end{cases}. \quad (2.8)$$

The expressions of \mathbf{M} , \mathbf{m} , $\mathbf{m}^{(eq)}$ and \mathbf{S} of the D3Q19 model are provided in the work by Wang *et al.* (2016).

2.1.1. No-slip boundary condition

The no-slip condition on solid surfaces is crucial for interface-resolved particle-laden flow simulations. In the present LBM, an interpolated bounce-back scheme of second-order

accuracy, proposed by Bouzidi *et al.* (2001), is used to account for the no-slip boundaries. As shown in figure 2, \mathbf{x}_w is the location where a boundary link intercepts with the solid surface, and \mathbf{x}_f and \mathbf{x}_b are the locations of two lattice nodes on the opposite sides of the solid boundary. The solid boundary location is described by $q = |\mathbf{x}_f - \mathbf{x}_w|/|\mathbf{x}_f - \mathbf{x}_b|$. When $q \leq 0.5$, the distribution function at \mathbf{x}_f (located between \mathbf{x}_f and \mathbf{x}_{ff}) is first interpolated and then streamed exactly to \mathbf{x}_f after bouncing back from the wall for a total distance of a lattice grid size δ_x in a single time step δ_t , as shown in figure 2(a). Therefore, the velocity distribution function at the boundary node is updated using a linear-interpolation scheme:

$$f_\alpha(\mathbf{x}_f, t + \delta_t) = 2qf_{\bar{\alpha}}^*(\mathbf{x}_f, t) + (1 - 2q)f_{\bar{\alpha}}^*(\mathbf{x}_{ff}, t) + 2\rho_0\omega_\alpha \frac{\mathbf{e}_\alpha \cdot \mathbf{u}_w}{c_s^2}, \quad (2.9)$$

or a quadratic-interpolation one:

$$f_\alpha(\mathbf{x}_f, t + \delta_t) = q(2q + 1)f_{\bar{\alpha}}^*(\mathbf{x}_f, t) + (1 + 2q)(1 - 2q)f_{\bar{\alpha}}^*(\mathbf{x}_{ff}, t) - q(1 - 2q)f_{\bar{\alpha}}^*(\mathbf{x}_{fff}, t) + 2\rho_0\omega_\alpha \frac{\mathbf{e}_\alpha \cdot \mathbf{u}_w}{c_s^2}, \quad (2.10)$$

where f_α and $f_{\bar{\alpha}}^*$ are the bounce-back distribution function and incident distribution function, respectively, with $\mathbf{e}_\alpha = -\mathbf{e}_{\bar{\alpha}}$, and \mathbf{u}_w is the velocity at the wall location \mathbf{x}_w . When $q > 0.5$, as shown in figure 2(b), the distribution function at \mathbf{x}_f is first streamed to \mathbf{x}_r (located between \mathbf{x}_f and \mathbf{x}_w) after bouncing back from the wall, then an interpolation is performed to obtain $f_\alpha(\mathbf{x}_f, t + \delta_t)$, yielding a linear scheme:

$$f_\alpha(\mathbf{x}_f, t + \delta_t) = \frac{1}{2q} \left[f_{\bar{\alpha}}^*(\mathbf{x}_f, t) + 2\rho_0\omega_\alpha \frac{\mathbf{e}_\alpha \cdot \mathbf{u}_w}{c_s^2} \right] + \frac{(2q - 1)}{2q} f_\alpha(\mathbf{x}_{ff}, t + \delta_t), \quad (2.11)$$

or a quadratic one:

$$f_\alpha(\mathbf{x}_f, t + \delta_t) = \frac{1}{q(2q + 1)} \left[f_{\bar{\alpha}}^*(\mathbf{x}_f, t) + 2\rho_0\omega_\alpha \frac{\mathbf{e}_\alpha \cdot \mathbf{u}_w}{c_s^2} \right] + \frac{2q - 1}{q} f_\alpha(\mathbf{x}_{ff}, t + \delta_t) - \frac{2q - 1}{1 + 2q} f_\alpha(\mathbf{x}_{fff}, t + \delta_t). \quad (2.12)$$

If the three fluid nodes \mathbf{x}_f , \mathbf{x}_{ff} and \mathbf{x}_{fff} are all available, the quadratic-interpolation schemes ((2.10) and (2.12)) are used. If only two fluid nodes \mathbf{x}_f and \mathbf{x}_{ff} exist (\mathbf{x}_{fff} is absent or separated from \mathbf{x}_{ff} by a solid boundary), the linear schemes ((2.9) and (2.11)) should be invoked.

2.1.2. Force evaluation

Based on the work by Ladd (1994), Wen *et al.* (2014) proposed a Galilean invariant momentum exchange method (GIMEM) to calculate hydrodynamic force F_H and torque T_H exerted on a solid object in a fluid:

$$F_H \delta_t = \sum_{\mathbf{x}_f, \alpha} [f_{\bar{\alpha}}^*(\mathbf{x}_f, t)(\mathbf{e}_{\bar{\alpha}} - \mathbf{u}_w) - f_\alpha(\mathbf{x}_f, t + \delta_t)(\mathbf{e}_\alpha - \mathbf{u}_w)], \quad (2.13)$$

$$T_H \delta_t = \sum_{\mathbf{x}_f, \alpha} (\mathbf{x}_w - \mathbf{x}_c) \times [f_{\bar{\alpha}}^*(\mathbf{x}_f, t)(\mathbf{e}_{\bar{\alpha}} - \mathbf{u}_w) - f_\alpha(\mathbf{x}_f, t + \delta_t)(\mathbf{e}_\alpha - \mathbf{u}_w)], \quad (2.14)$$

in which \mathbf{x}_c is the position of mass centre of the solid object. The summation is performed over all boundary links α and all boundary nodes \mathbf{x}_f .

Three-dimensional sedimentation patterns

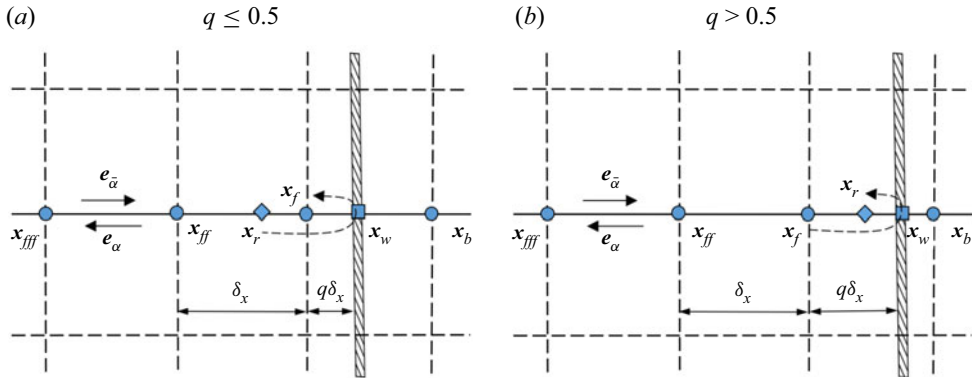


Figure 2. Bounce-back scheme for the no-slip boundary condition near a solid wall.

In the present LBM simulations, the solid disks move within the fixed lattice grids. Thus, when a grid node is uncovered as the solid moves, proper initial distribution functions should be assigned to this node to ensure that the flow is properly defined at the new fluid node. An ‘equilibrium plus non-equilibrium’ refilling scheme originally proposed by Caiazzo (2008) is used in the present work. In this refilling scheme, the distribution functions at a newly uncovered node \mathbf{x}_{uc} are partitioned into the equilibrium and non-equilibrium parts:

$$f_{\alpha}(\mathbf{x}_{uc}, t + \delta_t) = f_{\alpha}^{(eq)}(\mathbf{u}_w, \overline{\delta\rho}) + f_{\alpha}^{(neq)}(\mathbf{x}_{uc} + \mathbf{e}_c\delta_t, t + \delta_t). \quad (2.15)$$

The equilibrium part $f_{\alpha}^{(eq)}$ is obtained from the local wall velocity \mathbf{u}_w and the average density fluctuation of available neighbouring fluid nodes $\overline{\delta\rho}$. The non-equilibrium term $f_{\alpha}^{(neq)}$ is determined as the non-equilibrium part from the neighbouring node $\mathbf{x}_{uc} + \mathbf{e}_c\delta_t$, in which \mathbf{e}_c is the lattice direction giving the minimum value of $(\mathbf{e}_c \cdot \mathbf{n})/(|\mathbf{e}_c||\mathbf{n}|)$ and \mathbf{n} is the outer normal vector on the solid surface from where the new fluid node is uncovered. According to the comparative studies among different refilling schemes (Peng *et al.* 2016), the present ‘equilibrium plus non-equilibrium’ refilling scheme performed well in computational efficiency and numerical stability.

As two solid cylindrical objects come close to each other with a small gap between them, the lattice grids are not sufficiently fine to resolve the fluid dynamics within the gap. Thus, the lubrication force model proposed by Brändle de Motta *et al.* (2013) is used to calculate the additional hydrodynamic forces exerted on the cylinders due to the squeezed thin fluid layer:

$$F_L^{ij}(\varepsilon) = -6\pi\mu_f R^* v_n [\lambda(\varepsilon) - \lambda(\varepsilon_0)], \quad (2.16)$$

in which μ_f is the fluid viscosity and v_n is the normal component of the relative velocity between the two cylinders at the approaching point. The effective solid size $R^* = R_c^i R_c^j / (R_c^i + R_c^j)$, in which R_c^i and R_c^j are the characteristic sizes of the two cylinders defined as the minimum value between the radius r_c and the half-length $l_c/2$ of the cylinder, i.e. $R_c = \text{MIN}(r_c, l_c/2)$. For the collision between a cylinder and a planar wall, the effective solid size is equal to the characteristic size of the cylinder $R^* = R_c^i$. The asymptotic functions $\lambda(\varepsilon)$, in which $\varepsilon = \delta_{gap}/R_c$ and δ_{gap} is the gap size between two approaching cylinders, have different forms for the cylinder–cylinder and cylinder–wall

interactions (Brändle de Motta *et al.* 2013):

$$\text{cylinder-cylinder: } \lambda(\varepsilon) = \frac{1}{2\varepsilon} - \frac{9}{20} \ln \varepsilon - \frac{3}{56} \varepsilon \ln \varepsilon + 1.346, \quad (2.17a)$$

$$\text{cylinder-wall: } \lambda(\varepsilon) = \frac{1}{\varepsilon} - \frac{1}{5} \ln \varepsilon - \frac{1}{21} \varepsilon \ln \varepsilon + 0.9713. \quad (2.17b)$$

As shown in figure 3, three critical scaled gap sizes, ε_0 , ε_1 and ε_2 , are defined. The lubrication force is invoked when $\varepsilon < \varepsilon_0$. The lubrication force $F_L^{ij}(\varepsilon)$ is calculated using (2.16) and ((2.17a) or (2.17b)) when $\varepsilon_1 < \varepsilon < \varepsilon_0$, and it is constant and equal to the value at $\varepsilon = \varepsilon_1$, i.e. $F_L^{ij}(\varepsilon) = F_L^{ij}(\varepsilon_1)$, when $0 \leq \varepsilon \leq \varepsilon_1$. Solid–solid contact between the two cylinders occurs when $\varepsilon < 0$, then the solid–solid contact force F_{ss}^{ij} should be considered:

$$F_{ss}^{ij} = -k_n |\delta_{gap}| - \beta_n v_n, \quad (2.18)$$

$$k_n = -\frac{m_e(\pi^2 + (\ln e_d)^2)}{(N_c \delta_t)^2}, \quad (2.19)$$

$$\beta_n = -\frac{2m_e(\ln e_d)}{(N_c \delta_t)}, \quad (2.20)$$

where $m_e = m_i m_j / (m_i + m_j)$ for the cylinder–cylinder collision and $m_e = m_i$ for the cylinder–wall collision with the masses of the cylinders m_i and m_j . The coefficient of restitution is specified as $e_d = 0.97$, and $N_c \delta_t$ represents the contact duration in which N_c is set to 8 in the present simulations, as suggested by Brändle de Motta *et al.* (2013). The interaction force is calculated as a sum of the solid–solid contact force F_{ss}^{ij} and lubrication force $F_L^{ij}(\varepsilon_1)$ when $\varepsilon_2 \leq \varepsilon < 0$, and only the solid–solid contact force exists when $\varepsilon \leq \varepsilon_2$. In the present simulations, the three critical gap sizes ε_0 , ε_1 and ε_2 are specified as 0.125, 0.001 and -0.005 , respectively, for the cylinder–cylinder contact, and 0.15, 0.001 and -0.005 , respectively, for the cylinder–wall contact. It is noted that the lubrication force models represented by (2.16) and (2.17a,b), which were originally calibrated for the sphere–sphere and sphere–wall interactions, are used for the interactions involving the cylinders in the present work. The effect of this approximate treatment is considered small, because the magnitudes of the lubrication forces are much smaller than those of resolved hydrodynamic forces, as illustrated below by the results in § 5.

2.2. DEM for cylindrical particles

The code of the cylindrical particle DEM used in the present study was originally developed by Guo *et al.* (2012a,b). The translational and rotational motion of an individual cylinder i is governed by Newton’s second law of motion:

$$m_i \frac{d\mathbf{v}_i}{dt} = \mathbf{F}_H^i + \mathbf{F}_L^i + \mathbf{F}_{ss}^i + m_i \mathbf{g}, \quad (2.21)$$

and

$$\mathbf{I}_i \cdot \frac{d\boldsymbol{\omega}_i}{dt} - (\mathbf{I}_i \cdot \boldsymbol{\omega}_i) \times \boldsymbol{\omega}_i = \mathbf{T}_H^i + \mathbf{T}_L^i + \mathbf{T}_{ss}^i, \quad (2.22)$$

in which \mathbf{v}_i and $\boldsymbol{\omega}_i$ are the translational and angular velocities, respectively, of the cylinder, and their derivatives with respect to the time t give the corresponding accelerations.

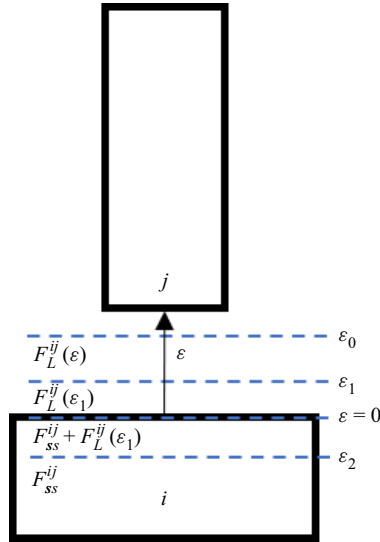


Figure 3. Multilayer lubrication force model for two contacting cylindrical objects.

The translational movement of the cylinder of mass m_i is driven by a combination of the hydrodynamic force F_H^i , lubrication force F_L^i , solid–solid contact force F_{ss}^i and the gravitational force $m_i g$. The rotation of the cylinder is propelled by a sum of torques T_H^i , T_L^i and T_{ss}^i , arising from the hydrodynamic force, lubrication force and solid–solid contact force, respectively. For the three-dimensional non-spherical objects, I_i represents the moment of inertia tensor. The evolution of velocities, positions and orientations of the objects can be obtained by the time integration of (2.21) and (2.22) using a central finite difference scheme with a fixed time step.

In the DEM simulations, several typical cylinder–cylinder contact types were recognized by Kodam *et al.* (2010), as shown in figure 4. In the present work, the contact detection algorithms are proposed to determine the gap size δ_{gap} , contact normal direction and contact point position for each contact scenario, following the previous work by Kodam *et al.* (2010) and Guo *et al.* (2012a). Thus, the lubrication force F_L^i , solid–solid contact force F_{ss}^i , and the two torques T_L^i and T_{ss}^i due to F_L^i and F_{ss}^i can be calculated.

2.3. Validation of the LBM-DEM code

Four sets of simulations are performed and analysed using the developed LBM-DEM code. First, the sedimentations of a single disk of aspect ratio $AR = 0.1$ and dimensionless moment of inertia $I^* = 5.97 \times 10^{-3}$ at various particle terminal Reynolds numbers Re are simulated. The AR of a disk is defined as the ratio of the thickness l_c to the diameter d_c of the disk, i.e. $AR = l_c/d_c$. In the simulations, steady, transitional and periodic falling patterns are sequentially obtained as Re increases. The simulations are consistent with the previous experimental observations by Field *et al.* (1997). Second, the drag coefficients of the disk ($AR = 0.1$) falling in a fluid at a range of particle terminal Reynolds numbers Re from 10 to 400 are obtained from the present simulations. The simulation results are in good agreement with the predictions by Clift, Grace & Weber (1978), which were determined by the extensive experimental results. Third, fluid flows around a cylinder ($AR = 5$) fixed at a specified position are simulated. As the cylinder Reynolds

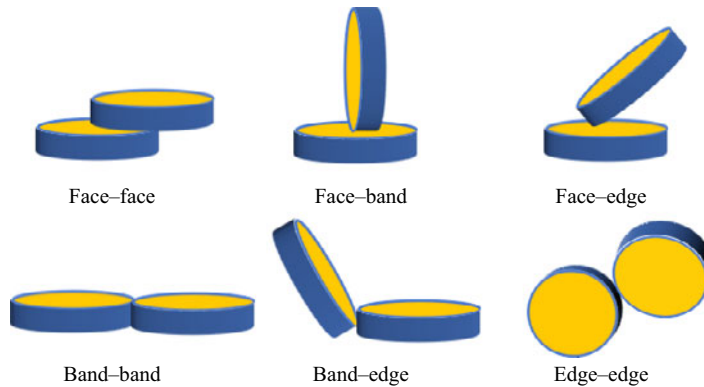


Figure 4. Typical cylinder–cylinder contact types considered in the DEM simulations (Kodam, *et al.* 2010; Guo *et al.* 2012a).

number is specified as $Re = 300$, the lift and torque coefficients of the cylinder at various orientational angles (or attack angles) are compared with the previous simulation results by Zastawny *et al.* (2012). Also, good agreement is achieved. Fourth, a simulation of two disks falling in tandem is performed and compared with the existing experimental results by Brosse & Ern (2011). The details about the LBM-DEM code validation and the definitions of the Reynolds numbers are provided in [Appendix A](#).

In addition, the contact detection algorithms and contact force models for the cylinder–cylinder and cylinder–wall interactions were validated in our previous work by modelling the cylindrical particle packings in a container (Tangri, Guo & Curtis 2017) and the hopper flows (Tangri, Guo & Curtis 2019).

3. Computational set-up of the sedimentation of two interacting disks

A 3-D rectangular computational domain of dimensions $L_x = L_z = 300$ (lattice unit or LU) and $L_y = 1200$ (LU) is created, as shown in [figure 5\(a\)](#). Two identical disks of the equivalent volume sphere diameter d_{eq} are placed in tandem at the positions of the coordinates $(L_x/2, L_y - d_1, L_z/2)$ and $(L_x/2, L_y - d_1 - d_2, L_z/2)$, respectively. The clearance to the top boundary is specified as $d_1 = 6.27d_{eq}$. The initial distance between the centres of the two disks d_2 ([figure 5a](#)) and the initial inclination angle θ_0 , which is the angle between the major axis of a disk and the y axis ([figure 5b](#)), are varied to understand the effects of the initial conditions of the disk release. Four different aspect ratios ($AR = 0.1, 0.4, 0.7$ and 1), defined as the ratio of the thickness l_c to the diameter d_c of the disk, are used in the present simulations to examine the effect of disk shape on the falling dynamics. All the disks have the same volume and the equivalent volume sphere diameter is assigned as $d_{eq} = 31.88$ (LU). The densities of fluid and cylinders are assigned as $\rho_f = 1$ and $\rho_s = 1.2$, respectively. The dimensionless moments of inertia I^* , which can be calculated for the disks using (1.1), are listed in [table 1](#). The ratios of the moment of inertia of the disk about its axis of symmetry I_l and the moment of inertia of the same disk about its diameter I_d are also shown in [table 1](#). A ratio of I_l/I_d reflects the relative significance of the inertia rotating about the axis of symmetry to that about a diameter for a disk.

No-slip wall boundary conditions are specified in the x and z directions. Periodic boundary conditions are used in the y direction for the modelling of the disks falling in a very deep tank. The fluid and two disks are initially at rest and sedimentation

Three-dimensional sedimentation patterns

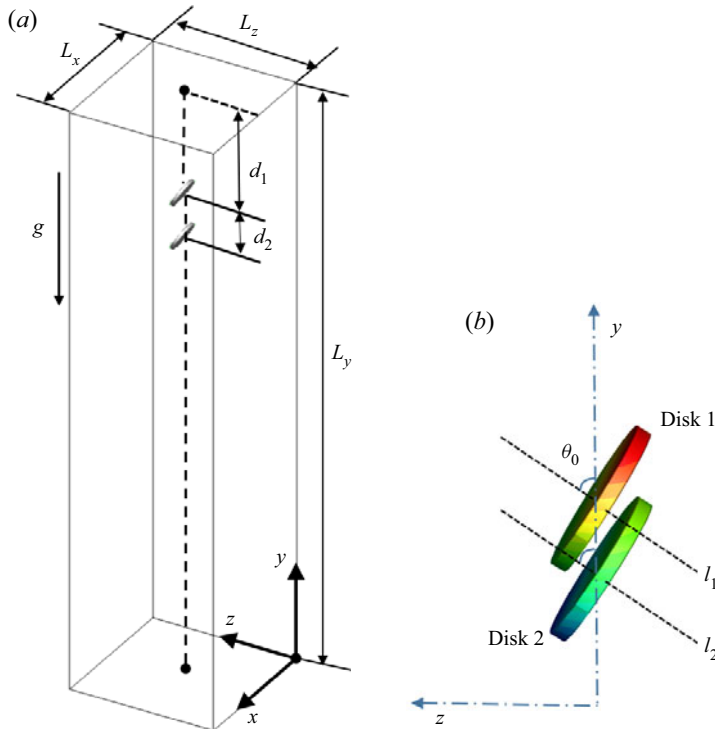


Figure 5. (a) Computational domain of two disks falling in a viscous fluid and (b) an illustration of the initial angle between the major axis of a disk and the vertical direction y .

AR	I^*	I_1/I_d
0.1	5.97×10^{-3}	1.97
0.4	2.86×10^{-2}	1.65
0.7	6.88×10^{-2}	1.20
1	1.37×10^{-1}	0.857

Table 1. Moments of inertia of the disks used in the simulations.

starts when constant downward body forces are exerted on the disks. The disks settle at different terminal velocities by adjusting the fluid viscosity. In the present simulations, the confinement effects of solid wall boundaries are minimized by using a sufficiently large domain. The size ratio of L_x/d_{eq} and L_z/d_{eq} is set to approximately 9.4, resulting in nearly the same results of settling paths and rotation of the disks as using a wider domain of the ratio $L_x/d_{eq} = L_z/d_{eq} = 18.8$. The effect of height L_y , the distance between two periodic boundaries, is examined by increasing the ratio L_y/d_{eq} from 37.6 to 75.3 for the simulations with $I^* = 5.97 \times 10^{-3}$ and $Re = 600$, and nearly the same results are obtained. Thus, a smaller domain of $L_x/d_{eq} = L_z/d_{eq} = 9.4$ and $L_y/d_{eq} = 37.6$ is used in most of the present simulations for a lower computational cost. The sensitivity to the grid resolution has been examined by doubling the present grid resolution, and almost the identical simulation results are obtained.

No.	AR	d_c /mm	l_c /mm
1	0.1 ± 0.0015	20 ± 0.12	2 ± 0.02
2	0.1 ± 0.0011	28 ± 0.15	2.8 ± 0.025
3	0.4 ± 0.0022	7 ± 0.02	2.8 ± 0.02
4	0.7 ± 0.0032	10 ± 0.08	7 ± 0.06
5	1 ± 0.013	2.8 ± 0.02	2.8 ± 0.01
6	1 ± 0.008	10 ± 0.09	10 ± 0.07

Table 2. Geometric properties of six types of disks.

Mass concentration of glycerol	0	25 %	50 %
Density of mixture (g cm^{-3})	1	1.0598	1.1263
Dynamic viscosity of mixture (mPa s)	1.005	2.095	6.05
Kinematic viscosity of mixture ($\mu\text{m s}^{-2}$)	1.005	1.9768	5.3714

Table 3. Properties of three solutions at the temperature of 20 °C.

4. Experimental set-up of the sedimentation of two interactive disks

Physical experiments of two interacting disks falling in a fluid are conducted to provide additional results for a better understanding of sedimentation behaviour and to validate the present simulation results. Six types of disks with different sizes (diameter d_c and thickness l_c) and AR, as listed in table 2, are used in the experiments. The disks, made of acrylic of density $\rho_s = 1.2 \text{ g cm}^{-3}$, are manufactured using a laser cutting machine. To achieve different settling Reynolds numbers, various solutions of glycerol in water with different viscosities are employed, as shown in table 3.

The experiments are conducted at the room temperature of 20 °C. At the beginning, two identical disks are held by a single clamp and are fully immersed in the stationary liquid inside a tank of $200 \times 2000 \times 200 \text{ mm}^3$. The initial positions and orientations of the two disks are the same as those specified in the present numerical simulations. The clamp opens slowly and slightly to release the two disks simultaneously, minimizing flow perturbations. The two disks then settle in the liquid under the effect of gravitational force. The falling processes of the disks are recorded by cameras, and the videos are analysed by a MATLAB® code to determine the positions and settling speeds of the disks. In the present experiments, at least three runs are conducted for a specified set of control parameters.

5. Results and discussion

To understand the sedimentation process, we analyse the horizontal drifting displacements, orientation and hydrodynamic forces of the two disks. The orientation of a disk can be described by a pitch angle θ and a yaw ϕ . As shown in figure 6(a), the pitch angle θ is the angle from the vertical y axis to the line l' , which is the projection of the major axis of the disk (l) onto the y - z plane, and the yaw angle ϕ is the angle from l' to l .

The hydrodynamic forces exerted on the disks by the surrounding fluid play a critical role in the contacts between the disks. For a better understanding of such hydrodynamic contributions to the disk–disk contacts, the components of the hydrodynamic forces in the direction of the vector connecting the mass centres of the two disks are examined.

Three-dimensional sedimentation patterns

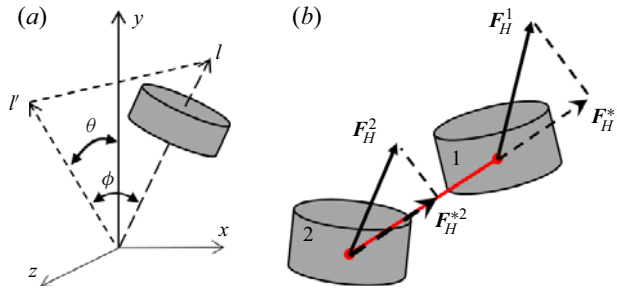


Figure 6. Illustration of (a) pitch angle θ and yaw angle ϕ of a disk and (b) hydrodynamic force components in the direction of the vector connecting the two centres of the disks.

As illustrated in figure 6(b), the hydrodynamic force component F_H^{*i} can be written as

$$F_H^{*i} = \frac{\mathbf{F}_H^i \cdot \mathbf{n}_{ji}}{(\rho_s - \rho_f)gV_d} \quad (i, j = 1, 2), \quad (5.1)$$

in which 1 and 2 represent the trailing disk and leading disk, respectively, \mathbf{F}_H^i is the hydrodynamic force vector acting on the disk i , which is calculated using (2.13), and \mathbf{n}_{ji} is the unit branch vector from the mass centre of the disk j to that of the disk i . The dot product is normalized by the gravitational force term $(\rho_s - \rho_f)gV_d$, in which V_d is the volume of a disk and g is the gravitational acceleration. Thus, the positive and negative values of F_H^{*i} contribute to the separation and approaching, respectively, of the two disks.

In the falling, the disks accelerate from zero velocity to a terminal state, in which the vertical component of the disk velocity u_y fluctuates around a time-average value (see figure 11). Thus, the Reynolds number is defined as

$$Re = \frac{u_l d_{eq}}{\nu_f}, \quad (5.2)$$

in which u_l is the time-average vertical velocity of the leading disk (in the lower position) at the terminal state, d_{eq} is the equivalent volume sphere diameter and ν_f is the kinematic viscosity of the fluid.

The present disk-surface-resolved direct numerical simulation (DNS) and experimental results show that the dynamics of two closely arranged flat disks in the sedimentation are remarkably different from that of two spheres, attributed to the effect of the object shape. Further analyses reveal that the falling patterns are determined by a combination of disk shape (characterized by a dimensionless moment of inertia I^*) and Re , as a result of complex multiphase flows involving disk–fluid and disk–disk interactions.

5.1. Effects of initial conditions

The effects of the initial disk inclination angle θ_0 and distance between mass centres of the two disks d_2 (see figure 5a) have been examined and the results are shown in figures 7 and 8. The dimensionless horizontal displacement of a disk is expressed as $Z^* = z/d_{eq}$, in which z is the z -displacement of the disk. The evolution of Z^* and the pitch angle θ is plotted as a function of a dimensionless falling displacement defined as $Y^* = y_2/d_{eq}$, in which y_2 is the y -displacement of the leading disk.

As shown in figure 7(a,b), when the disks fall broadside at zero initial inclination angle $\theta_0 = 0^\circ$, the instability with the oscillation in the horizontal displacement Z^* occurs when

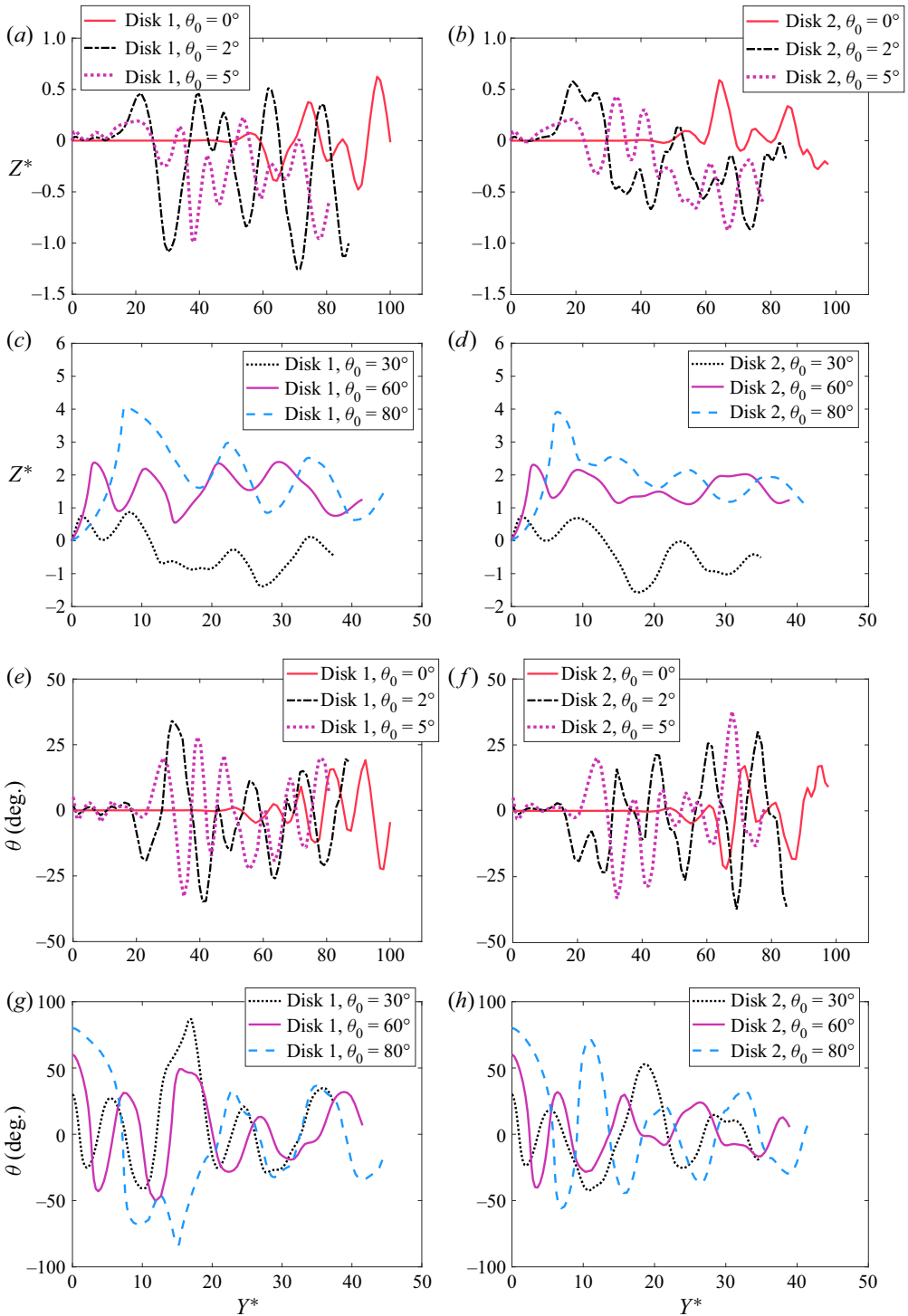


Figure 7. Effects of the initial inclination angle of the disks θ_0 on (a–d) horizontal displacements in the z direction Z^* and (e–h) pitch angles θ obtained from the DNS simulations. The results of disk 1 and disk 2 are placed in the left-hand and right-hand columns, respectively. The initial distance between the two disks is $d_2 = 2.82d_{eq}$. The control parameters are $I^* = 5.97 \times 10^{-3}$ and $Re = 255$.

Three-dimensional sedimentation patterns

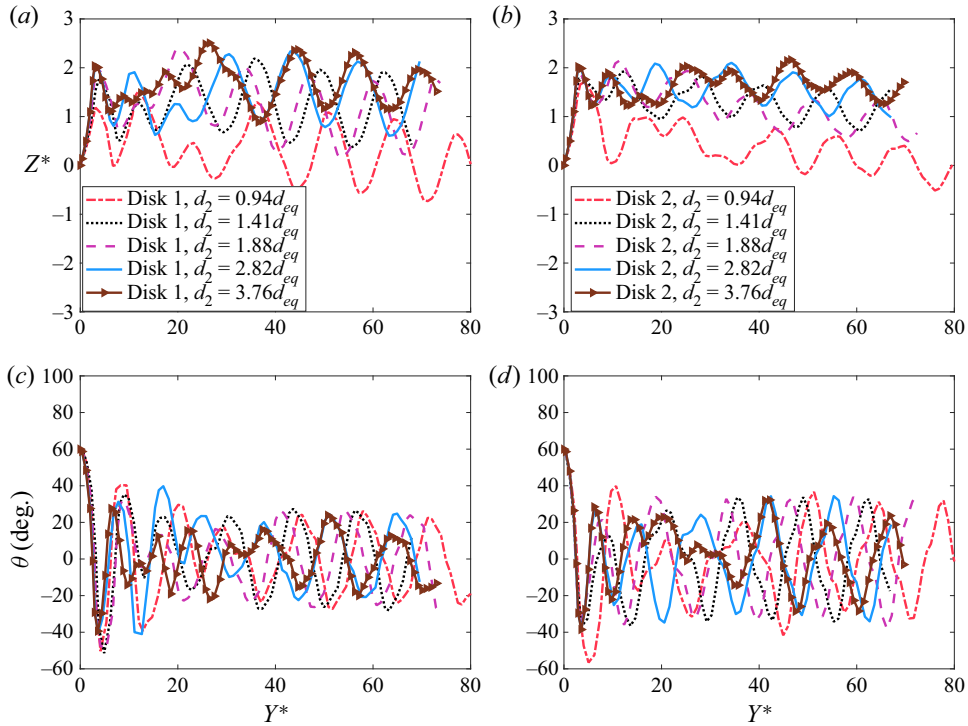


Figure 8. Effects of the initial distance d_2 on (a,b) horizontal displacements in the z direction Z^* and (c,d) pitch angles θ obtained from the simulations. The results of disk 1 and disk 2 are placed in the left-hand and right-hand columns, respectively. The initial inclination angle of the disks is $\theta_0 = 60^\circ$. The control parameters are $I^* = 5.97 \times 10^{-3}$ and $Re = 150$.

the dimensionless falling displacement Y^* is greater than 50. At small initial inclination angles $\theta_0 = 2^\circ$ and 5° , the significant oscillating horizontal movement Z^* occurs much earlier after $Y^* = 10$, indicating that a small asymmetry at the beginning of disk falling leads to a quicker development of instability. At larger initial angles $\theta_0 = 30^\circ, 60^\circ$ and 80° (see figure 7c,d), the two disks exhibit significant horizontal oscillations in Z^* immediately after they are released. Significant horizontal departure from the original position ($Z^* = 0$) is observed for the paths with very large initial inclination angles $\theta_0 = 60^\circ$ and 80° . The periodic oscillating behaviour of the angle θ is similar to that of the horizontal displacement Z^* , as shown in figure 7(e-h). The angle θ eventually fluctuates around $\theta = 0^\circ$ regardless of the values of initial inclination angle θ_0 .

The experiments by Brosse & Ern (2014) showed that at $Re = 255$, the thin disks of $AR = 0.1$ settled in the oscillatory paths with the inclination angles fluctuating periodically in time. These experimental observations are qualitatively similar to the present simulation results. In addition, the global linear stability analysis by Tchoufag, Fabre & Magnaudet (2014) predicted that a disk settled down in a periodic oscillating path with the set of parameters $\theta_0 = 0^\circ$, $Re = 255$, $AR = 0.1$ and $I^* = 5.97 \times 10^{-3}$, and the present simulation results are consistent with the prediction.

By maintaining the initial inclination angle $\theta_0 = 60^\circ$ and varying the distance d_2 , the effects of the initial separation between the two disks are shown in figure 8. For the distances d_2 between $0.94d_{eq}$ and $3.76d_{eq}$, all the disks oscillate periodically, and the horizontal deviation of the path from the initial position ($Z^* = 0$) increases slightly as the

distance d_2 increases (figures 8a and 8b). Similar periodic oscillations in the pitch angles θ are observed for all the distances d_2 considered (figures 8c and 8d). Thus, the similar falling patterns are observed for the cases with the initial distance d_2 between $0.94d_{eq}$ and $3.76d_{eq}$, though the quantitative differences in the disk motion exist.

In the following sections, to study the combined effects of disk aspect ratio and Reynolds number, the initial conditions of the disks are specified as $\theta_0 = 60^\circ$ and $d_2 = 2.82d_{eq}$.

5.2. Steady falling with enduring contact

Sequential snapshots of the two disks of $AR = 0.1$ and $I^* = 5.97 \times 10^{-3}$ falling at a Reynolds number of $Re = 100$ obtained from the simulations are shown in figure 9. The two falling disks initially translate horizontally in the positive z direction and rotate about the negative x axis, due to the initial inclined angle $\theta_0 = 60^\circ$. After reaching the maximum horizontal displacement in the z direction, the disks return to the central vertical line of the domain and, meanwhile, they rotate about the positive x axis. The trailing disk falls at a faster speed and can collide on the back of the leading disk, since the wake flow behind the leading disk reduces the drag force on the trailing disk. The two disks remain in contact and eventually fall together in a steady mode.

In the steady falling process, the high- and low-pressure regions are formed in the front of and behind, respectively, the two contacting disks (figure 10a), and the vortices are formed from the edges of the disks (figure 10b). The high- and low-pressure regions and vortices also remain steady, as the two disks fall in the steady mode. The falling patterns of the two disks obtained from the numerical simulation are similar to those observed from the physical experiment with the same values of I^* and Re (figure 10c). It is noted that the images in figure 10(c) are reproduced from the movie recorded in the physical experiment (provided in the supplementary material, available at <https://doi.org/10.1017/jfm.2023.186>). The present steady falling pattern of the two disks in a Y -configuration (figure 10) was also observed in the previous experiments of two disks falling in tandem with the parameters of $AR = 0.1$ and $Re = 80, 115$ and 152 (Brosse & Ern 2011).

By converting the lattice units to the international system of units (SI), as described in Appendix B, the vertical velocities of the two disks, u_y , obtained from the LBM-DEM simulation are compared with those obtained from the real experiment, as shown in figure 11. In general, the simulation results are in good agreement with the experimental results. At the early stage, the trailing disk 1 has a higher falling speed than the leading disk 2. After the trailing disk catches up to the leading one, the two disks fall at similar speeds. The noisy fluctuations of the experimental data may be attributed to the fact that the resolution of the disk images is not sufficiently high, causing the errors in the determination of the centres of the gravity of the disks.

The horizontal displacements of the two disks in the z direction are shown in figure 12(a), in which $Z_1^* = z_1/d_{eq}$, $Z_2^* = z_2/d_{eq}$, $Y^* = y_2/d_{eq}$, z_1 and z_2 are the z -displacements of the trailing disk and leading disk, respectively, and y_2 is the y -displacement of the leading disk. The two disks initially deviate from the vertical central line ($Z_1^* = Z_2^* = 0$), and then return closer to the central line. The horizontal oscillations are observed in both simulations and experiments. The two disks have initial angles of $\theta_1 = \theta_2 = 60^\circ$ and $\phi_1 = \phi_2 = 0^\circ$, in which the subscripts 1 and 2 represent the trailing and leading disks, respectively. As shown in figure 12(b), the angles θ_1 and θ_2 oscillate periodically with reduced amplitudes. The angles ϕ_1 and ϕ_2 maintain 0° at the early stage and then fluctuate with a magnitude smaller than 2° (figure 12c), indicating that the rotation of the two disks mainly occurs in the y - z plane. It is noted that the experimental results in figures 12(a) and 12(b) are from one of three runs under the same conditions.

Three-dimensional sedimentation patterns

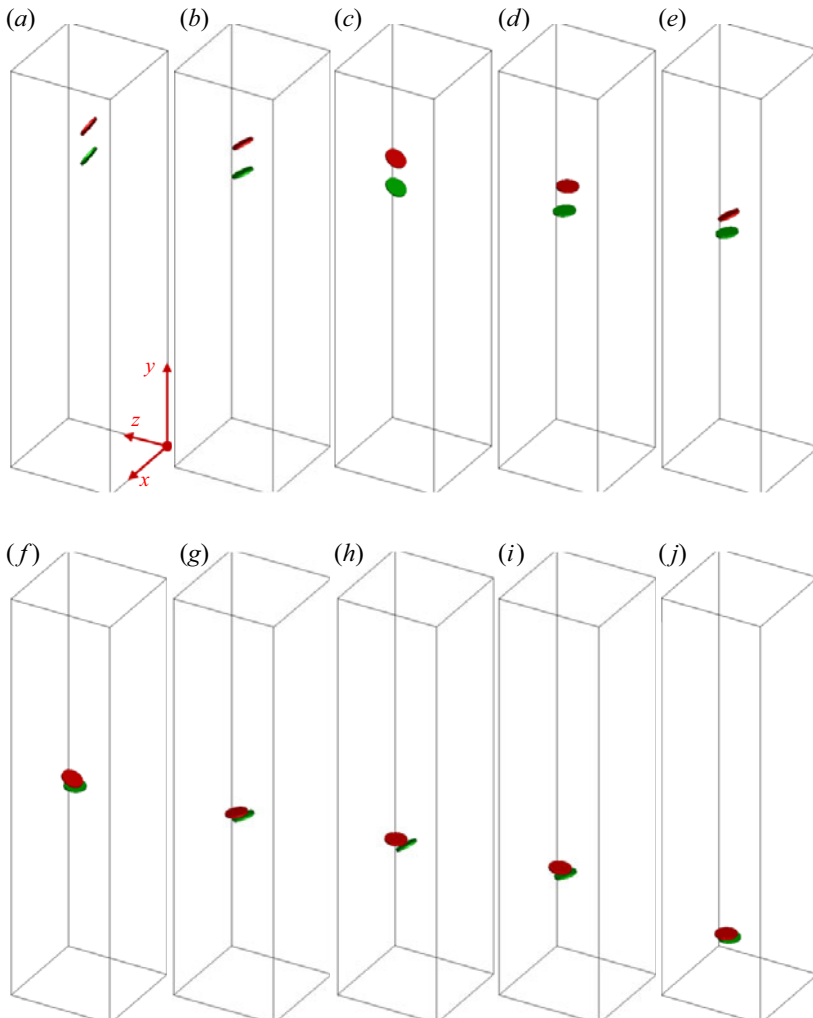


Figure 9. Sequential snapshots of the two disks falling in a fluid obtained from the simulations. The control parameters are $I^* = 5.97 \times 10^{-3}$ and $Re = 100$.

The same falling styles are observed from the three runs, although small differences exist in the displacements of the disks. This also applies in [figures 14\(a,b\)](#) and [18\(a\)](#).

The evolution of the hydrodynamic force components is plotted in [figure 12\(d\)](#). The hydrodynamic force component on the leading disk F_H^{*2} tends to make the two disks collide, while the hydrodynamic force component on the trailing disk F_H^{*1} separates them. However, the average magnitude of F_H^{*2} is larger than that of F_H^{*1} , leading to the closing-in and eventually contact of the two disks. Consistent with the oscillations of the disk motion ([figures 12a](#) and [12b](#)), the hydrodynamic forces also oscillate periodically. The contact of the two disks is defined as the gap between them is sufficiently small (i.e. $\varepsilon < \varepsilon_0$ in [figure 3](#)) that the lubrication force F_L is invoked. The evolution of the scaled lubrication force, $F_L^* = F_L / [(\rho_s - \rho_f)gV_d]$ (the solid–solid contact force F_{ss} is included in F_L), is also plotted in [figure 12\(d\)](#), in which a long presence of non-zero values of F_L^* indicates the enduring contact between the two disks.

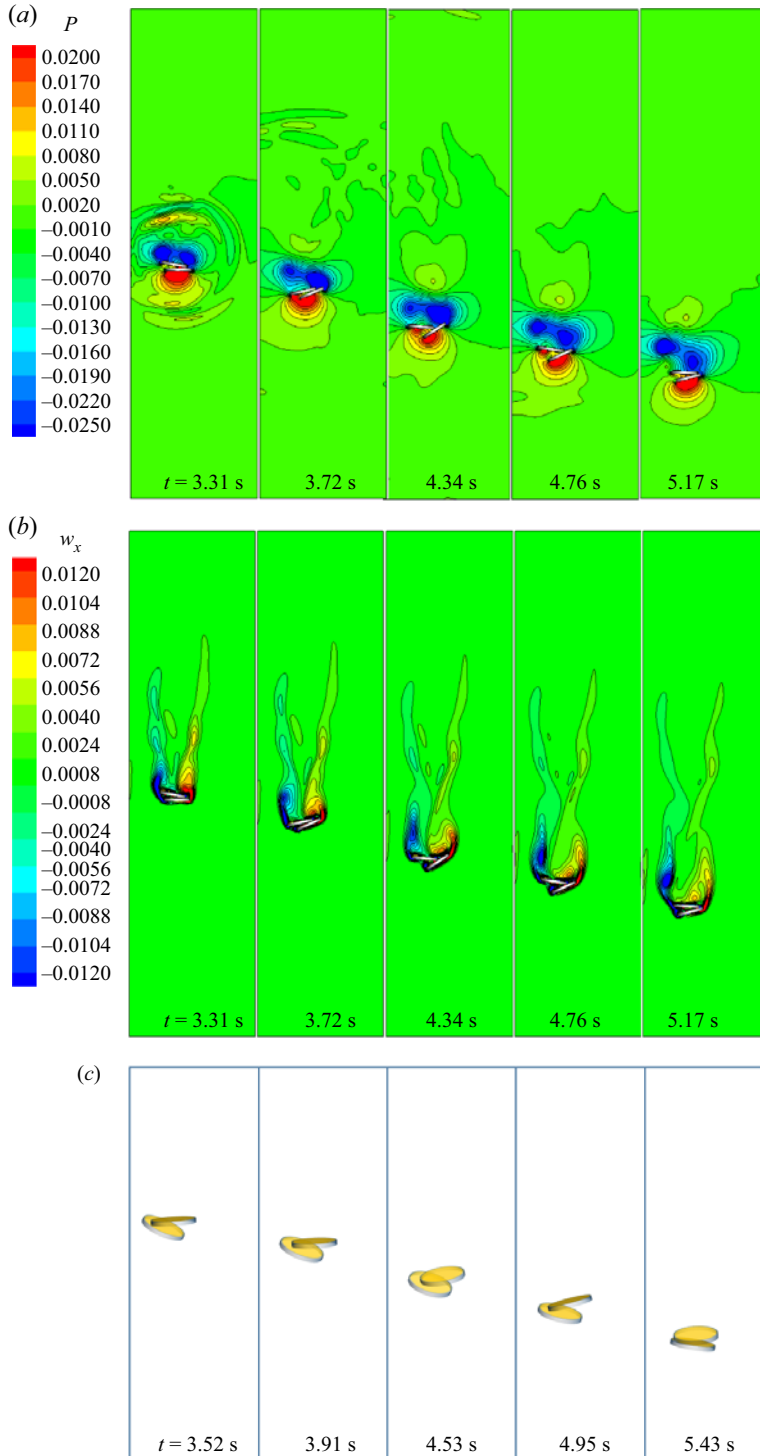


Figure 10. Contours of (a) fluid pressure P and (b) fluid vorticity in the x direction w_x at various time instants t in the sedimentation of two disks obtained from the simulation. (c) Corresponding images at the similar time instants obtained from the physical experiment. The views are in the y - z plane. The control parameters are $I^* = 5.97 \times 10^{-3}$ and $Re = 100$. The movies of the simulation and physical experiment are provided in the supplementary material.

Three-dimensional sedimentation patterns

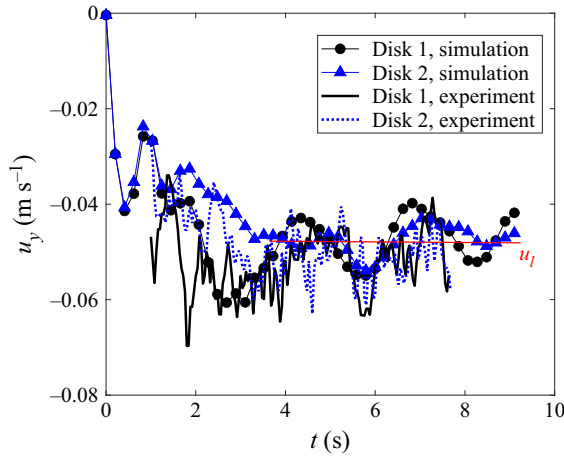


Figure 11. A comparison of the vertical velocities of the disks between the simulation and experiment. The control parameters are $I^* = 5.97 \times 10^{-3}$ and $Re = 100$.

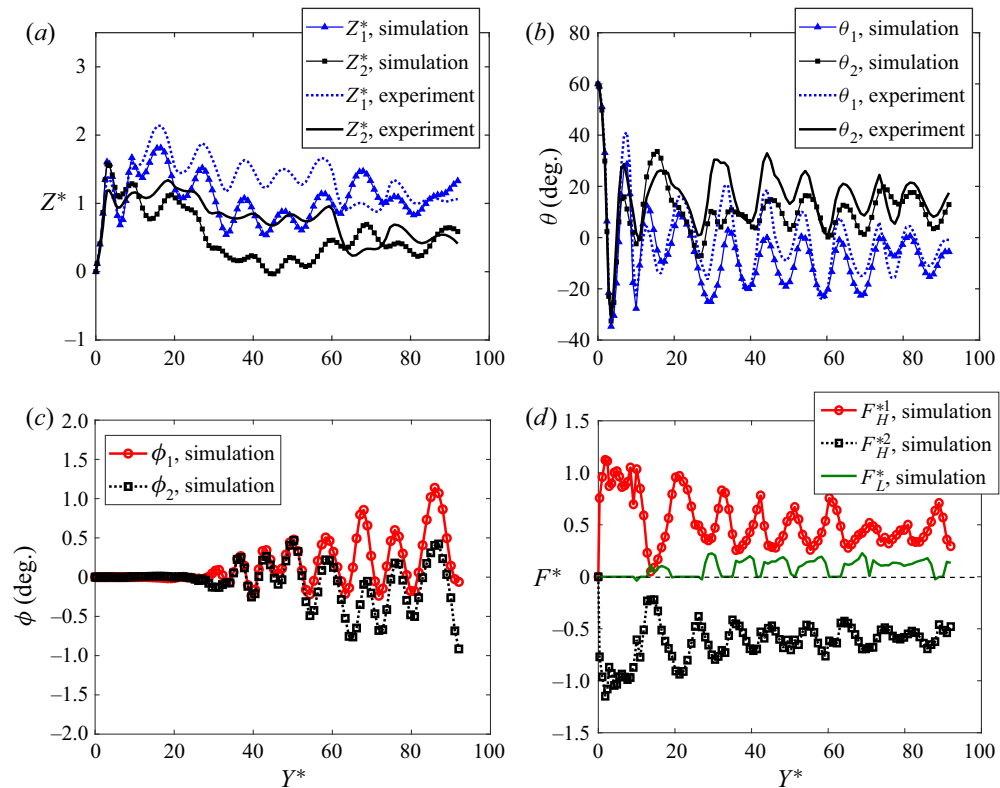


Figure 12. Evolution of (a) horizontal displacements in the z direction, (b) pitch angle θ , (c) yaw angle ϕ , and (d) hydrodynamic force components and lubrication force. The control parameters are $I^* = 5.97 \times 10^{-3}$ and $Re = 100$.

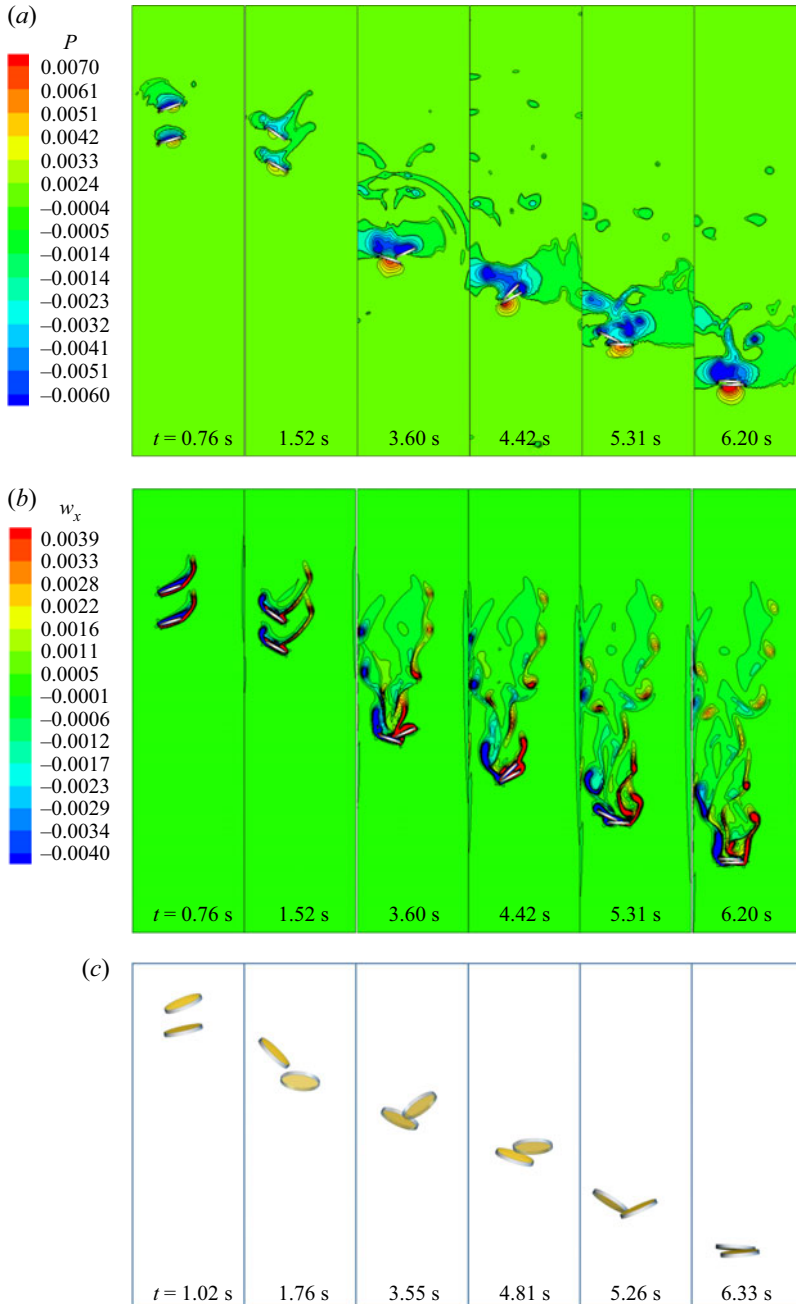


Figure 13. Contours of (a) fluid pressure P and (b) fluid vorticity in the x direction w_x at various time instants in the sedimentation of two disks obtained from the simulation. (c) Corresponding images at the similar time instants obtained from the physical experiment. The views are in the y - z plane. The control parameters are $I^* = 5.97 \times 10^{-3}$ and $Re = 255$. The movies of the simulation and physical experiment are provided in the supplementary material.

Three-dimensional sedimentation patterns

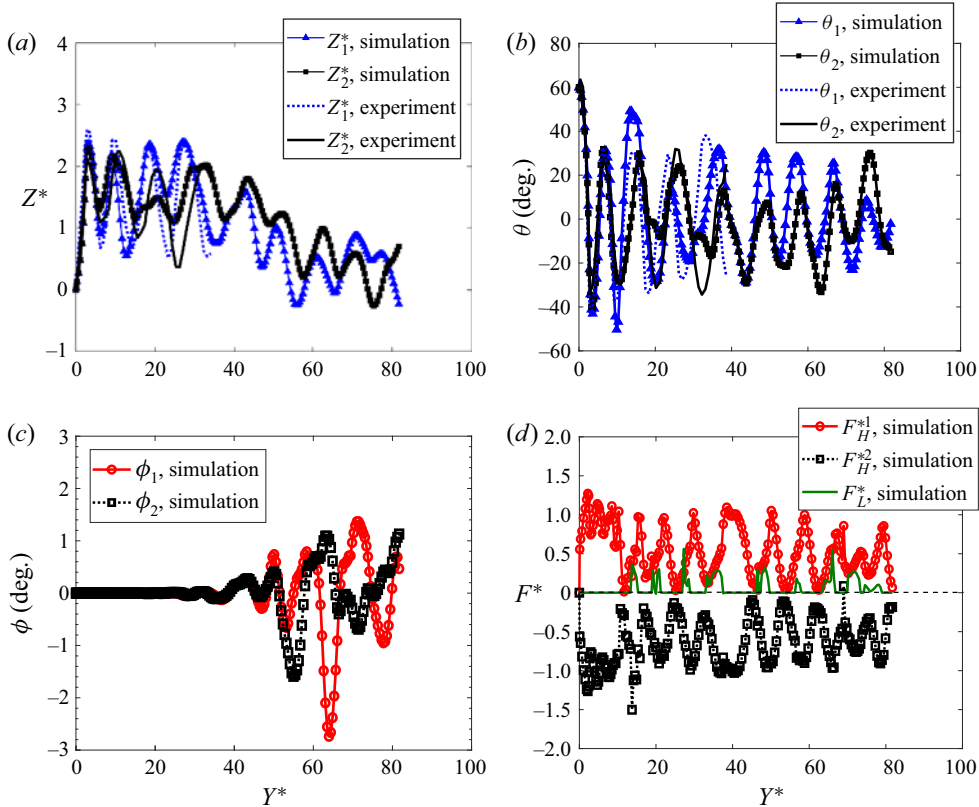


Figure 14. Evolution of (a) horizontal displacements in the z direction, (b) pitch angle θ , (c) yaw angle ϕ , and (d) hydrodynamic force components and lubrication force. The control parameters are $I^* = 5.97 \times 10^{-3}$ and $Re = 255$.

5.3. Periodic swinging with intermittent contact

With the same dimensionless moment of inertia I^* of 5.97×10^{-3} , the steady falling pattern is changed to a double-disk periodic swinging pattern by increasing the Re from 100 to 255. As shown in figure 13(a), the trailing disk can catch up and collide with the leading disk, as the drag force on the trailing disk is reduced by the wake flow behind the leading disk. After the first collision, the trailing disk starts to swing periodically above the leading disk: translational and rotational oscillations occur simultaneously. Similar to the steady falling (figure 10a), high- and low-pressure regions are generated in the front of and behind, respectively, the two disks, as shown in figure 13(a). Associated with the periodic oscillation of the disks, the vortex shedding occurs periodically, as shown in figure 13(b), which is different from the steady vortices in the steady falling (figure 10b). The physical experiment of sedimentation is performed with the same parameters of $I^* = 5.97 \times 10^{-3}$ and $Re = 255$ as in the simulation. The snapshots of the disks reproduced from the video taken in the experiment (provided in the supplementary material) are similar to those obtained from the simulation, as shown in figure 13(c). The periodic oscillations in the two disks falling were also observed in the previous experiments by Brosse & Ern (2011, 2014) with the parameters of $AR = 0.1$ and $Re = 255$ and 275.

In the periodic falling, the translational oscillation in the horizontal z direction and the rotational oscillation are demonstrated in figures 14(a) and 14(b), respectively. After the

early stage, the trailing and leading disks oscillate with a phase difference of approximately a quarter of period, and the trailing disk has larger oscillating amplitudes than the leading one. Compared to the falling pattern with $Re = 100$ (figure 12), larger amplitudes of the oscillations in the horizontal displacement Z^* and inclination angle θ are obtained for the periodic swinging pattern with $Re = 255$. A significant difference between the falling patterns at $Re = 100$ and $Re = 255$ ($I^* = 5.97 \times 10^{-3}$) is that the two disks form a stable Y -configuration at $Re = 100$ (figures 10*b* and 10*c*), and the Y -configuration periodically changes direction at $Re = 255$ (figures 13*b* and 13*c*).

As shown in figure 14(*c*), the yaw angle ϕ develops gradually and remains minimal within 2° , indicating the dominance of the planar motion of the disks in the y - z plane. When the two disks come to contact, the hydrodynamic force components on them exhibit periodic variations (figure 14*d*), which are associated with periodic oscillations of the disks. In the periodic oscillation, the disk-disk contact occurs intermittently as the non-zero lubrication forces F_L^* appear occasionally, as shown in figure 14(*d*), which is different from the enduring contact in the steady falling (figure 12*d*).

5.4. Separation after a single collision

The falling pattern also depends on the shape of the disks. At the Reynolds number of $Re = 320$, by increasing the disk aspect ratio AR from 0.1 to 0.4 (I^* from 5.97×10^{-3} to 2.86×10^{-2}), the two disks collide once and thereafter separate, without periodic oscillation of the horizontal translation. As shown in figure 15(*a*), the two disks initially fall along the vertical central line ($Z^* = 0$) until they collide at approximately $Y^* = 18$. The trajectories of the two disks deviate from the central line after the collision. At the early stage, the two disks rotate to have the major axes aligned vertically with θ close to 0° , as shown in figure 15(*b*). The collision at $Y^* = 18$ causes stronger rotation of the two particles, which is thereafter reduced as the two disks settle separately. Non-trivial magnitudes of the yaw angle ϕ are observed after the collision, as shown in figure 15(*c*), illustrating the three-dimensional rotation, rather than the planar motion, of the disks. As shown in the inset of figure 15(*d*), non-zero lubrication force F_L^* is obtained at approximately $Y^* = 18$ as the collision occurs. After the collision, the contributions of the hydrodynamic forces for the disks to contact or separate are significantly reduced, because the angles between the hydrodynamic force vectors F_H^i and the branch vector r_{ji} increase, resulting in the reduced projections of the hydrodynamic forces in the branch vector direction. This situation is associated with the side-by-side falling of the two disks. In addition, after the collision, the initially trailing disk (disk 1) surpasses the other one (disk 2) and becomes the new leading disk. As a result, the hydrodynamic force component F_H^{*1} changes its sign from positive to negative and F_H^{*2} changes its sign from negative to positive. The drafting, kissing and tumbling (DKT) behaviours, which frequently occur in the settling of a pair of spheres at high Reynolds numbers, are also observed in this sedimentation with the two disks of $I^* = 2.86 \times 10^{-2}$ and $Re = 320$. The above falling pattern with $AR = 0.4$ and $Re = 320$ is similar to the pattern with $AR = 1/3$ and $Re = 255$ and 285 observed in the experiments by Brosse & Ern (2014) and Ern & Brosse (2014), in which the two thick disks ($AR = 1/3$) separated after contact and fell side by side.

5.5. Tumbling without disk-disk contact

For the disks of a large dimensionless moment of inertia $I^* = 1.37 \times 10^{-1}$ (aspect ratio $AR = 1$) at a very large Reynolds number $Re = 1000$, the disks fall in a tumbling pattern with nearly random orientations and no disk-disk contact occurs, as shown in figure 16.

Three-dimensional sedimentation patterns

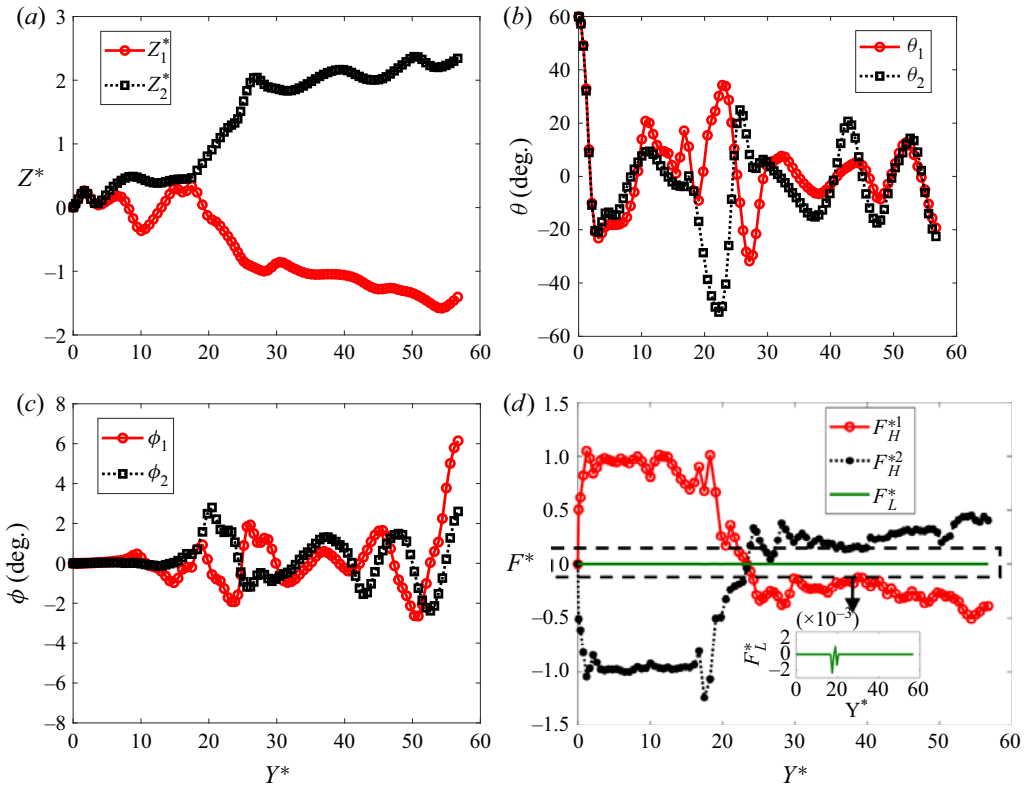


Figure 15. Evolution of (a) horizontal displacements in the z direction, (b) pitch angles θ , (c) yaw angles ϕ , and (d) hydrodynamic force components and lubrication force obtained from the simulation. The control parameters are $I^* = 2.86 \times 10^{-2}$ and $Re = 320$.

The motions of the disks are not constrained in the y - z plane, and displacements in the x -direction are also observed. As the disks remain separated, high- and low-pressure regions, which are created in the front of and behind each individual disk (figure 17a), are much smaller than those formed near the contacting pair of disks (figures 10a and 13a). Associated with the complex motion of the disks, the structures of the vortices induced by the disks are very chaotic, as shown in figure 17(b).

For the settling pattern of segregation without contact, the two disks deviate from the vertical central line at the very beginning and follow inclined paths thereafter, as shown in figure 18(a). The pitch angle θ varies in a wide range of -90° to 90° (figure 18b), due to the tumbling of the disks. The yaw angles ϕ oscillate between -20° and 20° (figure 18c), and thus the two disks undergo 3-D rotations. Consistent with the observation of no contact, the lubrication force F_L^* remains zero in the whole settling process, as shown in figure 18(d). In addition, the magnitudes of the hydrodynamic force components, which contribute to the contact or separation of the two disks, decrease as the separated disks settle side-by-side.

The evolution of the ratio of the angular velocity component in the axis-of-symmetry direction, ω_l , to the angular-velocity component in a diameter direction, ω_d , is plotted for each disk in figure 19. For the settling in a tumbling mode with $I^* = 1.37 \times 10^{-1}$ and $Re = 1000$, as shown in figure 19(a), the angular velocity component ω_l is significant compared to the component ω_d , indicating the remarkable disk rotation about the axis of symmetry. However, in the periodic swinging sedimentation with $I^* = 5.97 \times 10^{-3}$

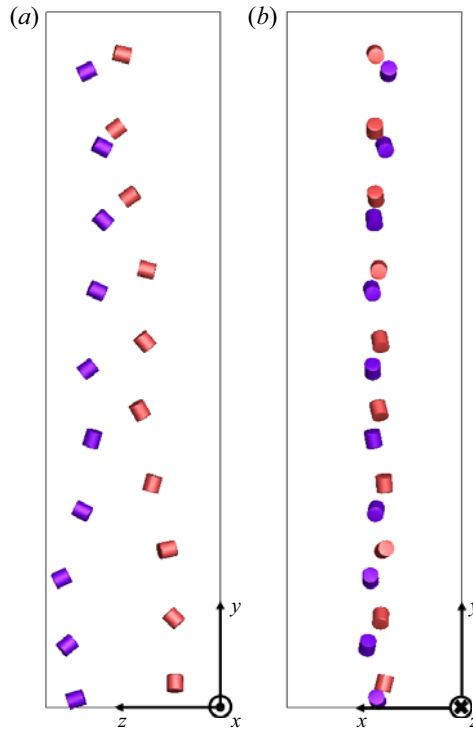


Figure 16. Sequential snapshots of the falling disks superimposed in the same plot of domain obtained from the simulation. The two pictures are obtained from different view angles. The control parameters are $I^* = 1.37 \times 10^{-1}$ and $Re = 1000$.

and $Re = 255$, as shown in figure 19(b), the angular velocity component ω_l is negligible compared to the component ω_d for most of the settling process. Thus, the rotation about a diameter is more dominant than the rotation about the axis of symmetry for the disks in the periodic swinging pattern, and the relative importance of the rotation about the axis of symmetry compared to that about a diameter increases in the tumbling pattern. The flatter disks with a smaller I^* have a larger moment-of-inertia ratio I_l/I_d , leading to greater resistance to the rotation about the axis of symmetry. Thus, a larger moment-of-inertia ratio I_l/I_d contributes to the more dominant rotation about a diameter than about the axis of symmetry for the disks in the sedimentation process.

5.6. Phase diagrams of falling patterns

The present results and the previous results (Brosse & Ern 2011, 2014) show that the falling styles of the two identical disks in a viscous fluid are determined jointly by the dimensionless moment of inertia of the disks I^* and the terminal Reynolds number of the leading disk Re . Thus, based on I^* and Re , a phase diagram is generated in figure 20(a) to classify the two-disk sedimentation into ten patterns: (1) steady falling with enduring disk–disk contact; (2) periodic swinging with intermittent disk–disk contacts; (3) three-dimensional oscillating with intermittent contacts; (4) separation after a single collision and steady falling with major axes of the disks aligned vertically; (5) separation after a single collision and chaotic 3-D oscillating with the major axes aligned almost vertically; (6) falling without disk–disk contact and three-dimensional oscillating with the

Three-dimensional sedimentation patterns

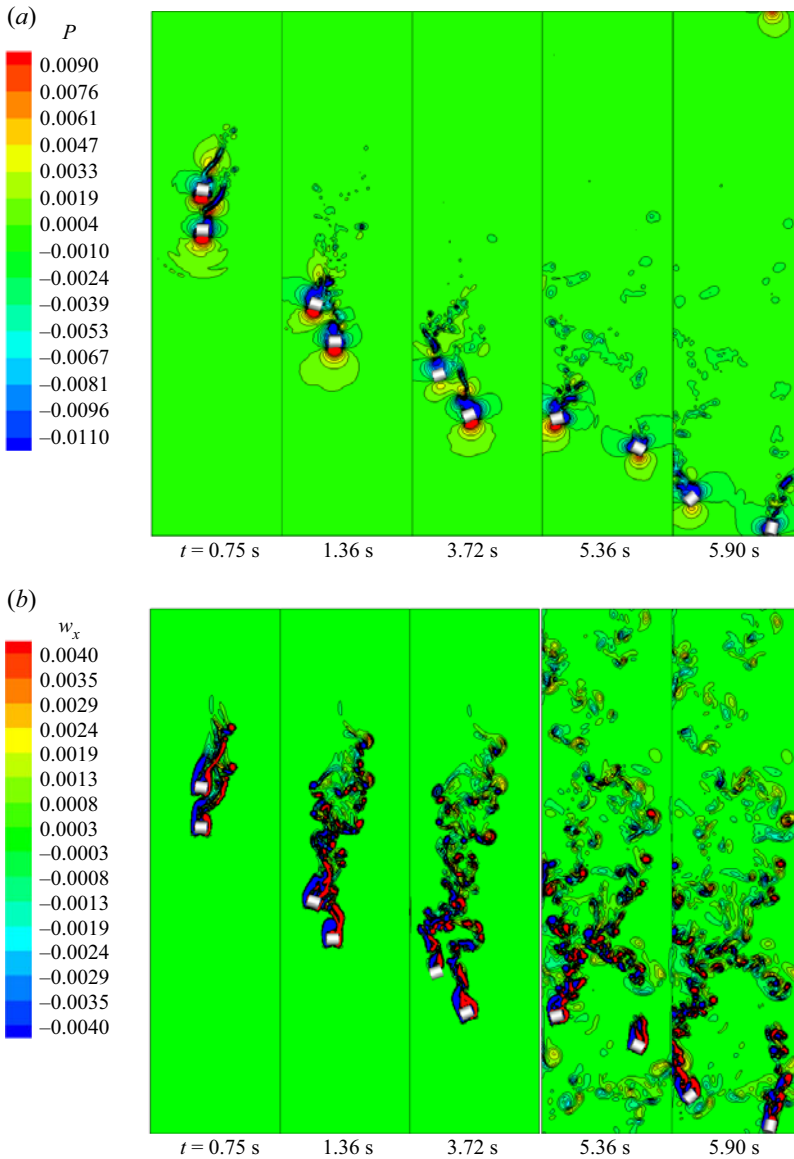


Figure 17. Contours of (a) fluid pressure P and (b) fluid vorticity in the x direction w_x at various time instants t in the sedimentation of two disks obtained from the simulation. The views are in the y - z plane. The control parameters are $I^* = 1.37 \times 10^{-1}$ and $Re = 1000$. The movies of the simulation and physical experiment are provided in the supplementary material.

major axes aligned almost vertically; (7) separation after a single collision and steady falling with major axes aligned horizontally; (8) separation after a single collision and steady falling with no preferential alignment of the major axes; (9) falling without disk–disk contact and 3-D oscillating with the major axes aligned almost horizontally; and (10) tumbling without disk–disk contact. For the flatter disks with a small value of $I^* = 5.97 \times 10^{-3}$, steady falling with enduring contact occurs when $Re < 100$, while 2-D periodic swinging with intermittent contacts takes place when $100 < Re < 270$, and the 2-D periodic swinging transits to a 3-D periodic oscillation when $Re > 270$. The disks with

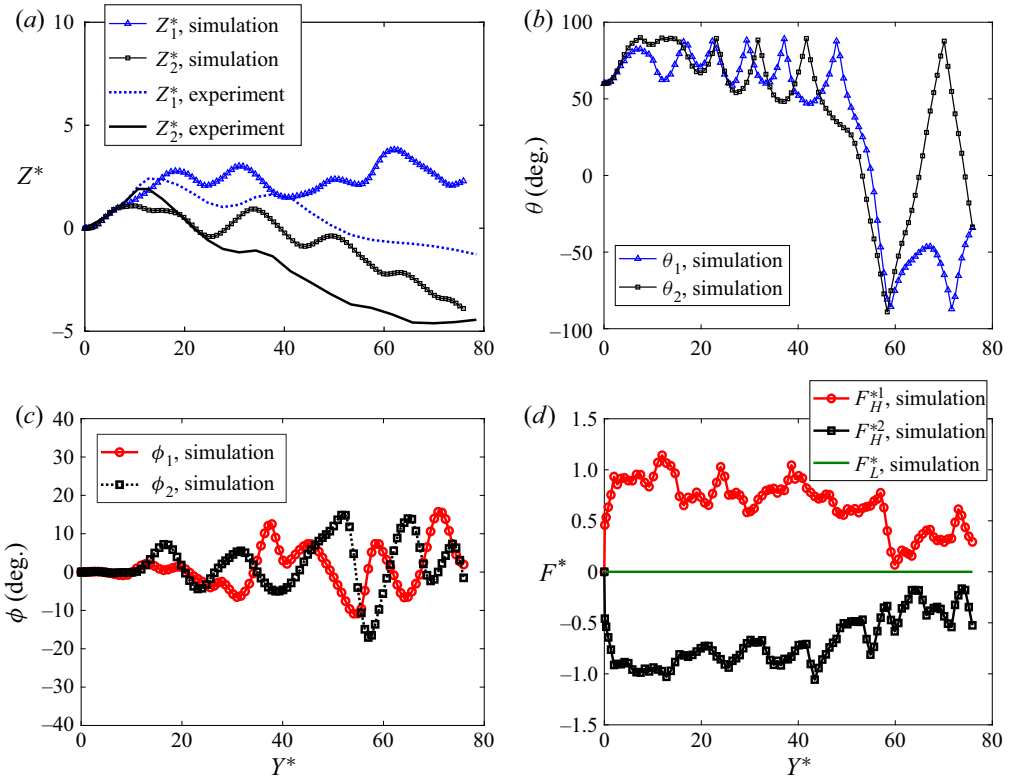


Figure 18. Evolution of (a) horizontal displacements in the z direction, (b) pitch angles θ , (c) yaw angles ϕ , and (d) hydrodynamic force components and lubrication force. The control parameters are $I^* = 1.37 \times 10^{-1}$ and $Re = 1000$.

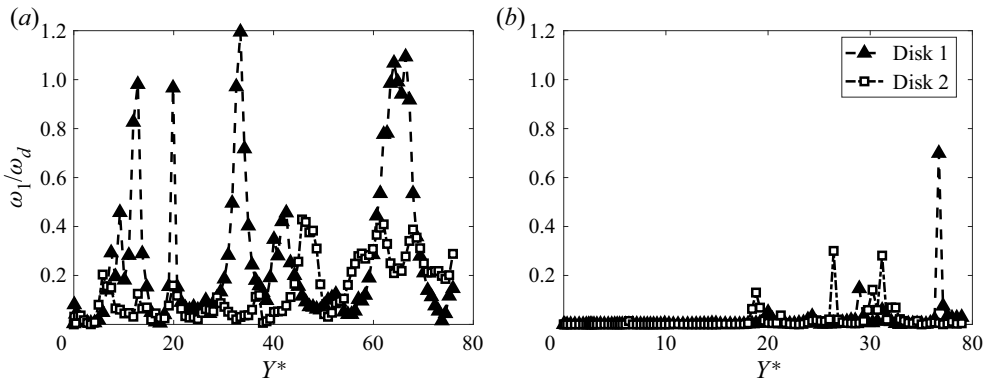


Figure 19. Evolution of ratios of angular velocity components obtained from the simulations for the control parameters: (a) $I_1/I_d = 0.857$, $I^* = 1.37 \times 10^{-1}$ and $Re = 1000$; (b) $I_1/I_d = 1.97$, $I^* = 5.97 \times 10^{-3}$ and $Re = 255$.

larger values of I^* settle in a DKT mode when $10 < Re < 100$, and the disks fall steadily after the separation. When $Re > 200$, the increase in I^* leads to single or no collision and the chaotic 3-D oscillating motions of the disks. A detailed description of the major features of the two-disk falling patterns is provided in [Appendix C](#).

Three-dimensional sedimentation patterns

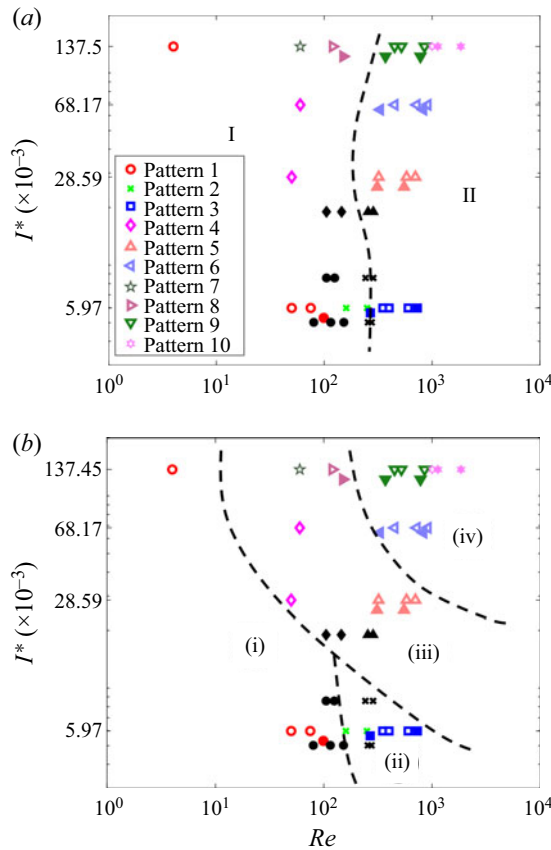


Figure 20. Phase diagrams of two-disk falling patterns: (a) planar motion (regime I) versus three-dimensional motion (regime II) and (b) regimes of various disk–disk contact types: (i) enduring contact; (ii) intermittent and multiple contacts; (iii) a single contact; and (iv) no contact. Open marks represent the present simulation results and filled marks are the present experimental results. The black filled marks represent the experimental data from Brosse & Ern (2011, 2014).

As shown in figure 20(a), the phase diagram is partitioned by a black dash curve into regimes I and II, which are associated with the planar motion and 3-D motion, respectively, of the disks. Thus, the planar or 3-D motion is determined primarily by the Re regardless of the AR or I^* of the disks, because the stronger turbulent flows enhance the 3-D rotation of the disks (see §§ 5.4 and 5.5). This conclusion is valid for the symmetric disk-like objects. However, it was observed that the asymmetric rigid fibres settled in 3-D helical paths at very low Re (< 1) in the previous experiments (Tozzi *et al.* 2011). As a result, the change in the object shape from symmetry to asymmetry can have a significant impact on the planar or 3-D motion of the objects.

By comparing the phase diagram of two-disk falling patterns (figure 20a) with that of a single disk falling (figure 24 in Appendix A.1), the 3-D falling patterns of the two disks are related to the 3-D motion of a separated disk in the sedimentation. As shown in figure 20(a), the 3-D falling of the two disks occurs at approximately $Re > 3 \times 10^2$. For a separated disk, as shown in figure 24 in Appendix A.1, when $Re > 3 \times 10^2$, the thicker disks of $I^* > 4 \times 10^{-2}$ settle in a tumbling mode, the moderately thick disks of $10^{-2} < I^* < 4 \times 10^{-2}$ in a chaotic mode and the thinner disks of $I^* < 10^{-2}$ in a periodic mode.

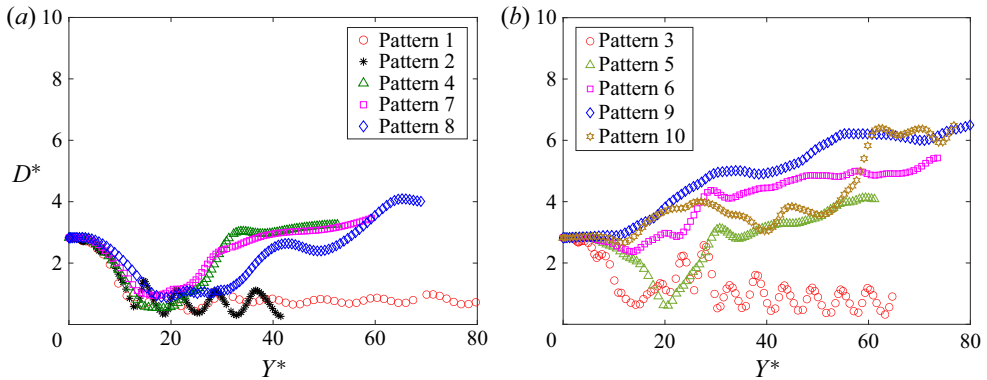


Figure 21. Evolutions of the distance between the mass centres of two disks, scaled by the equivalent volume sphere diameter d_{eq} , for various falling patterns with (a) planar motion and (b) three-dimensional motion of the disks. The data are obtained from the simulations.

The tumbling and chaotic modes are essentially characterized as complex 3-D motions. The periodic oscillations of a separated thinner disk at high Re exhibited a planar Zigzag pattern (Zhong *et al.* 2011; Lee *et al.* 2013) or a 3-D hula-hoop pattern (Auguste *et al.* 2013). Thus, it is interesting to note that the two thinner disks at a high $Re (> 3 \times 10^2)$, at which a separated disk falls in a planar zigzag pattern, can settle in 3-D motion due to the hydrodynamic interaction between them.

According to the types of disk–disk contacts in the sedimentation process, the phase diagram can be also classified into four distinctive regimes: (i) enduring contact; (ii) intermittent and multiple contacts; (iii) a single contact; and (iv) no contact, as shown in figure 20(b). Therefore, the contacts are affected by a combination of I^* and Re , and the probability and duration of the disk–disk contact are increased by reducing I^* and Re . It is noted that the phase diagrams shown in figure 20 are valid for the disks with the initial inclination angles θ_0 between 30° and 80° , and the disks with zero initial inclination angles may exhibit different falling behaviour according to the studies on the effects of initial conditions in § 5.1.

The evolutions of the distance D between the mass centres of two disks, scaled by the equivalent volume sphere diameter d_{eq} , for various falling patterns are shown in figure 21, in which $D^* = D/d_{eq}$. The evolutions of the corresponding scaled lubrication forces F_L^* are plotted in figure 22. For the enduring-contact falling (pattern 1), the scaled distance D^* maintains as approximately one in the contacting process and F_L^* is present as the contact persists. For the intermittent and multiple contacts (patterns 2 and 3), D^* oscillates around one and F_L^* appears occasionally. For the single-contact fallings (patterns 4, 5, 7 and 8), D^* initially decreases and then increases. The non-zero value of F_L^* is invoked only when the two disks move very close to each other (corresponding to the small D^*) and F_L^* disappears when D^* increases. The falling style in this single-contact regime is analogous to the DKT of a pair of spheres settling in a fluid. For the no-contact fallings (patterns 6, 9 and 10), D^* generally increases from the beginning and F_L^* vanishes in the whole falling process.

6. Conclusions

Solid-surface-resolved DNS of a pair of disks falling in a fluid are performed using a coupled approach of lattice Boltzmann method (LBM) and cylindrical particle discrete element method (DEM). The simulation results are generally consistent with the present

Three-dimensional sedimentation patterns

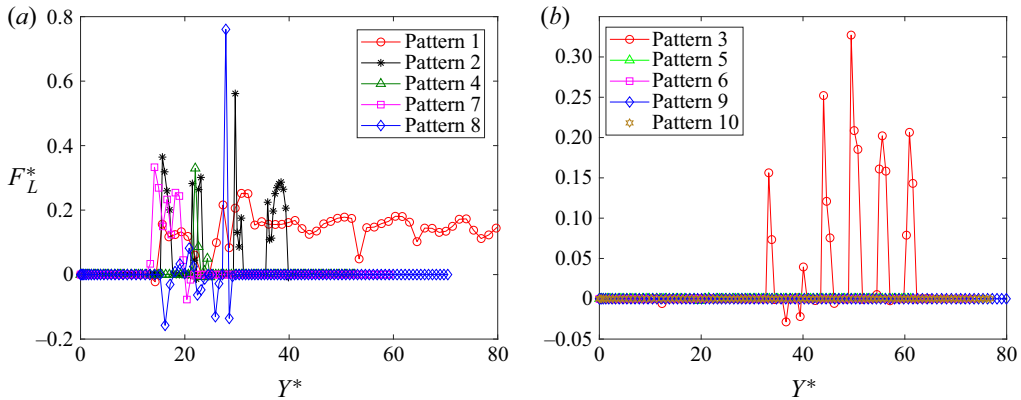


Figure 22. Evolutions of the scaled lubrication force between the two disks F_L^* for various falling patterns with (a) planar motion and (b) three-dimensional motion of the disks. The data are obtained from the simulations.

and previous experimental observations (Brosse & Ern 2011, 2014). Based on the simulations, translational and rotational displacements of the disks are presented to illustrate the sedimentation patterns, the contributions of hydrodynamic forces to collision or separation of the disks are discussed, and the evolution of the lubrication force is analysed to understand the disk–disk contact scenarios.

It is observed that the settling behaviour is determined by the combination of a dimensionless moment of inertia of the disks I^* and a disk Reynolds number Re . For the flatter disks with a small value of $I^* = 5.97 \times 10^{-3}$, steady falling with enduring contact occurs when $Re < 100$, while 2-D periodic swinging with intermittent contacts takes place when $100 < Re < 270$, and the 2-D periodic swinging transits to a 3-D periodic swinging when $Re > 270$. The disks with larger values of I^* fall in a DKT mode when $10 < Re < 100$. When $Re > 200$, the increase in I^* leads to single or no collision and the chaotic 3-D oscillating motions of the disks. Based on I^* and Re , a planar phase diagram is created to classify the two-disk falling into ten distinctive patterns. The planar motion or 3-D motion of disks is determined primarily by Re . It is believed that the strong disturbance flows at a high Re contribute to the chaotic 3-D rotation of disks. The chance for the two disks to contact is increased when I^* and Re are reduced.

This work presents a primary study on the hydrodynamic interactions of two non-spherical particles in the sedimentations. Future work may be conducted to understand the effects of solid wall boundaries on the sedimentation of a pair of non-spherical particles and the settling behaviours of multiple non-spherical particles.

Supplemental movies. Supplementary movies are available at <https://doi.org/10.1017/jfm.2023.186>.

Acknowledgements. The authors express their gratitude to Dr Z. Dong for the helpful discussion in the numerical code development and Dr G. Wang for providing the MATLAB code to extract data from videos taken in the physical experiments. At the time, both Dr Dong and Dr Wang worked at the Southern University of Science and Technology, Shenzhen, China.

Funding. The National Science Foundation of China (nos. 12132015, 91852205, 11872333, 12072319 and 11988102), the Zhejiang Provincial Natural Science Foundation of China (no. LR19A020001) and the Fundamental Research Funds for the Central Universities (no. 2021FZZX001-11) are acknowledged for their financial support.

Declaration of interests. The authors report no conflict of interest.

Author ORCIDiDs.

- ① Yu Guo <https://orcid.org/0000-0002-0012-4498>;
 ① Dingyi Pan <https://orcid.org/0000-0002-4804-2942>;
 ① Zhenhua Xia <https://orcid.org/0000-0002-5672-5890>;
 ① Zhaosheng Yu <https://orcid.org/0000-0001-8999-407X>;
 ① Lian-Ping Wang <https://orcid.org/0000-0003-4276-0051>.

Appendix A. Validation of the coupled scheme of lattice Boltzmann method (LBM) and cylindrical particle discrete element method (DEM)

Four sets of simulations have been performed using the coupled LBM-DEM code developed in this work. The present simulation results are compared with the existing experimental and numerical results for the code validation.

A.1. Falling modes for a single disk

Using the present LBM-DEM method, sedimentations of a single disk of $AR = 0.1$ and $I^* = 5.97 \times 10^{-3}$ at various particle terminal Reynolds numbers are simulated. A 3-D rectangular computational domain of dimensions $L_x = L_z = 300$ (lattice unit or LU) and $L_y = 1200$ (LU) is created, as shown in [figure 5\(a\)](#). The disk of an equivalent volume sphere diameter of $d_{eq} = 31.88$ (LU) is placed at the position of the coordinates $(L_x/2, L_y - d_1, L_z/2)$. The clearance to the top boundary is specified as $d_1 = 6.27d_{eq}$. Here, the Reynold number is defined as

$$Re = \frac{u_c d_c}{\nu_f}, \quad (\text{A1})$$

in which u_c and d_c are the terminal vertical velocity and diameter, respectively, of the disk, and ν_f is the kinematic viscosity of the fluid. The disk is released with the initial angle of 60° between the axis of the disk and the vertical direction, and it falls under the gravitational force. The sequential snapshots of the falling disk at different Re are shown in [figure 23](#). At a low Reynolds number ($Re = 55$), the disk eventually achieves a steady falling mode with the axis of the disk aligned vertically. At a higher Reynolds number ($Re = 120$), periodic movement in the horizontal direction and periodic rotation of the disk are observed. The further increases in Reynolds number ($Re = 180$ and 350) lead to an increase in the amplitudes of the periodic motion.

Based on the dimensionless moment of inertia I^* and particle Reynolds number Re , Field *et al.* (1997) classified four distinctive falling modes for a single disk in a viscous fluid: steady falling, periodic, chaotic and tumbling, as shown in [figure 24](#). The falling modes obtained from the present simulations are consistent with the classification by Field *et al.* (1997) (see [figure 24](#)).

Using the experimental set-up described in § 4, the sedimentation of a single acrylic disk in a solution of glycerol at $Re = 180$ is conducted with an initial inclination angle of $\theta_0 = 60^\circ$. The disk has a density of 1.2 g cm^{-3} , a diameter of $d_c = 20 \text{ mm}$, a thickness of $l_c = 2 \text{ mm}$ and thus $AR = 0.1$. A comparison between the simulation and experimental results is made for the horizontal displacements Z^* and pitch angles θ in [figures 25\(a\)](#) and [25\(b\)](#), respectively. The experimental data from three runs under the same conditions are presented. Similar sinusoidal oscillations are obtained in the simulation and experiments. The differences between the simulation and experiments in the oscillatory magnitudes and frequencies are approximately 15 %, which is comparable to the extent of the difference between two experimental runs. In the experiment, a disk was held and released by a

Three-dimensional sedimentation patterns

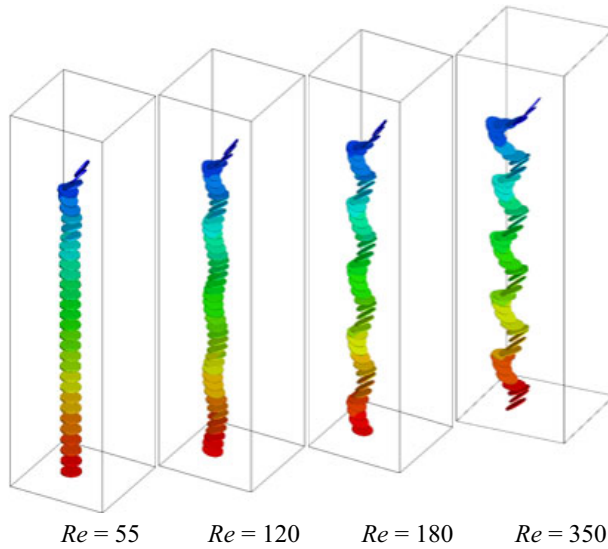


Figure 23. Sequential snapshots of the falling disk at different Re .

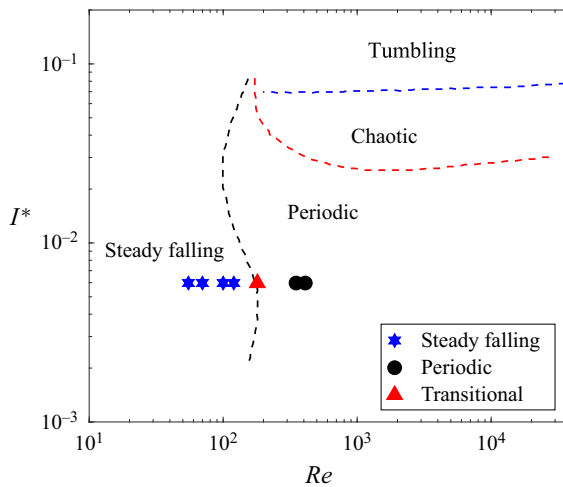


Figure 24. Phase diagram of the typical modes of a disk falling in a viscous fluid.

clamp, which might affect the initial falling of the disk by interacting with the surrounding fluid. The clamp did not exist in the numerical simulation. Thus, the initial conditions of the disk falling were not exactly the same between the experiment and simulation, which could cause the discrepancy in the comparison.

A.2. Drag coefficient versus particle terminal Reynolds number

Clift *et al.* (1978) experimentally determined the correlation between drag coefficient C_D of a disk falling in a fluid and particle terminal Reynolds number Re , as shown in figure 26.

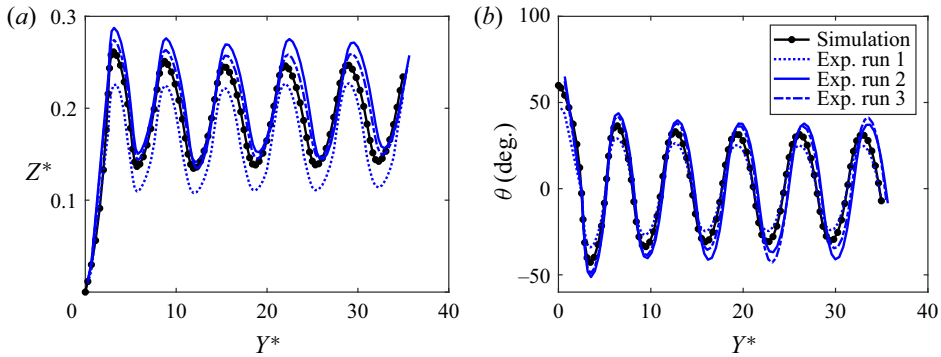


Figure 25. Evolution of (a) horizontal displacements in the z direction Z^* and (b) pitch angle θ of the settling disk for the control parameters $I^* = 5.97 \times 10^{-3}$ and $Re = 180$.

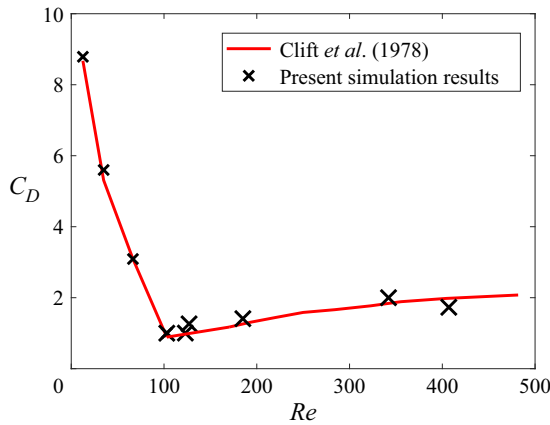


Figure 26. Drag coefficient versus Re for a falling disk of $AR = 0.1$ and $I^* = 5.97 \times 10^{-3}$ in a fluid.

The drag coefficient is defined as

$$C_D = \frac{F_D}{\frac{1}{2} \rho_f u_t^2 \frac{\pi}{4} d_{eq}^2}, \tag{A2}$$

in which F_D is the drag force on the disk (i.e. the hydrodynamic force in the vertical direction), u_t is the terminal falling velocity of the disk and d_{eq} is the equivalent volume sphere diameter of the disk. Two regimes can be distinguished: (i) for $Re < 100$, the disk eventually achieves a steady falling mode, and thus the drag coefficient exhibits a quick decrease with increasing Re ; (ii) for $Re > 100$, secondary motion of the disk (horizontal movement and rotation) occurs, associated with wake shedding at the edge of the disk, leading to the drag coefficient insensitive to Re .

Sedimentations of a single disk ($AR = 0.1$ and $I^* = 5.97 \times 10^{-3}$) at various Re are simulated using the present coupled LBM-DEM method, and the computational set-up is the same to that in [Appendix A.1](#). The drag coefficients obtained from the simulations are also plotted in [figure 25](#). A comparison shows that the present simulation results are in very good agreement with the correlation by Clift *et al.* (1978) in both Re -sensitive and Re -insensitive regimes.

Three-dimensional sedimentation patterns

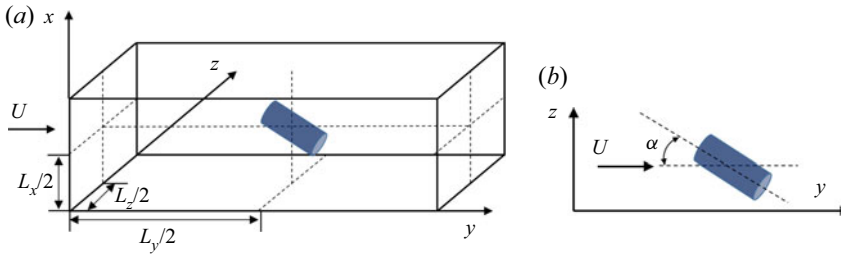


Figure 27. (a) A numerical domain of a fluid flowing around a fixed cylinder, and (b) an illustration of attack angle α : the angle between the major axis of the cylinder and the streamwise direction y in the y - z plane.

A.3. Lift and torque coefficients for a cylindrical particle

Fluid flows around a cylinder fixed at a specified position and orientation are simulated using the present coupled LBM-DEM approach. As illustrated in figure 27(a), a rectangular domain of $x \times y \times z$ dimensions of $200 \times 900 \times 600$ (lattice unit or LU) is created, and a cylinder, which has a diameter $d_c = 12$ LU, a length $l_c = 60$ LU and thus an aspect ratio $AR = l_c/d_c = 5$, is fixed at the centre of the domain. The effect of the cylinder orientation is examined by adjusting the attack angle α in the x - y plane, as shown in figure 27(b). The fluid flows along the y direction from the left-hand side to the right-hand side. A constant fluid velocity U is specified on the inlet boundary. The outlet boundary and the boundaries in the y and z directions are the fully developed flows with zero gradients of fluid velocities and pressures. In the simulations, the cylinder Reynolds number is specified as $Re = Ud_{eq}/\nu_f = 300$, in which d_{eq} is the equivalent volume sphere diameter of the cylinder.

With an attack angle α , the lift force F_L perpendicular to the streamwise y direction can be calculated. Thus, the lift coefficient C_L can be obtained as

$$C_L = \frac{F_L}{\frac{1}{2}\rho_f U^2 \frac{\pi}{4} d_{eq}^2}. \quad (A3)$$

The lift coefficient C_L is plotted as a function of the attack angle α in figure 28(a), and good agreement is obtained between the present simulation results and the previous DNS results of an ellipsoid with the same aspect ratio of $AR = 5$ by Zastawny *et al.* (2012). Also, the present simulation results follow the prediction by the models proposed by Kharrouba, Pierson & Magnaudet (2021), which are available for the attack angles $\alpha \leq 30^\circ$. In the article by Kharrouba *et al.* (2021), the Reynolds number is defined as $Re^* = Ud_c/\nu_f$ and thus the present Re and the previous Re^* follow the correlation:

$$Re^* = Re \left(\frac{2}{3AR} \right)^{1/3}. \quad (A4)$$

The parallel and perpendicular coefficients are defined as

$$C_{\parallel}^* = \frac{F_{\parallel}}{\frac{1}{2}\rho_f U^2 l_c d_c}, \quad (A5)$$

$$C_{\perp}^* = \frac{F_{\perp}}{\frac{1}{2}\rho_f U^2 l_c d_c}, \quad (A6)$$

in which F_{\parallel} and F_{\perp} represent the hydrodynamic force components parallel and perpendicular, respectively, to the symmetric axis of the cylindrical object. The lift force

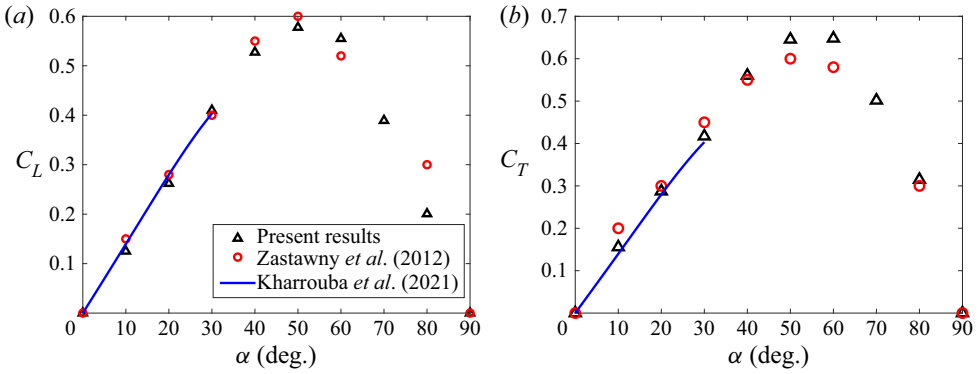


Figure 28. (a) Lift coefficient and (b) torque coefficient of a single cylinder as a function of attack angle α .

can be written as

$$F_L = F_{\perp} \cos \alpha - F_{\parallel} \sin \alpha. \tag{A7}$$

From (A3)–(A6), we can obtain

$$C_L = \frac{4}{\pi} \left(\frac{2}{3} \right)^{2/3} AR^{1/3} (C_{\perp}^* \cos \alpha - C_{\parallel}^* \sin \alpha). \tag{A8}$$

The mathematical expressions of C_{\perp}^* and C_{\parallel}^* as functions of AR , Re^* and α can be found in the paper by Kharrouba *et al.* (2021).

Pitching torque (in the z direction) T_P exerted on the cylinder can be also obtained from the simulations, and a torque coefficient C_T is defined as

$$C_T = \frac{T_P}{\frac{1}{2} \rho_f U^2 \frac{\pi}{8} d_{eq}^3}. \tag{A9}$$

Figure 28(b) shows the torque coefficient as a function of the attack angle. The present simulation results are consistent with the previous simulation results (Zastawny *et al.* 2012) and the prediction of the torque coefficient model (Kharrouba *et al.* 2021). In the work by Pierson *et al.* (2019), the torque coefficient C_T^* is defined as

$$C_T^* = \frac{T_P}{\frac{1}{2} \rho_f U^2 l_c^2 d_c}. \tag{A10}$$

Thus, the present torque coefficient C_T is related to C_T^* as

$$C_T = \frac{16AR}{3\pi} C_T^*. \tag{A11}$$

The mathematical model of C_T^* as a function of AR , Re^* and α is provided in the paper by Kharrouba *et al.* (2021).

A.4. Two disks falling in tandem

In a simulation of two identical disks falling in tandem, the disks have an aspect ratio of $AR = 0.1$ and a diameter of $d_c = 9$ mm. The densities of fluid and disks are $\rho_f = 1010$ kg m⁻³ and $\rho_s = 1020$ kg m⁻³, respectively. The Reynolds number of the leading

Three-dimensional sedimentation patterns

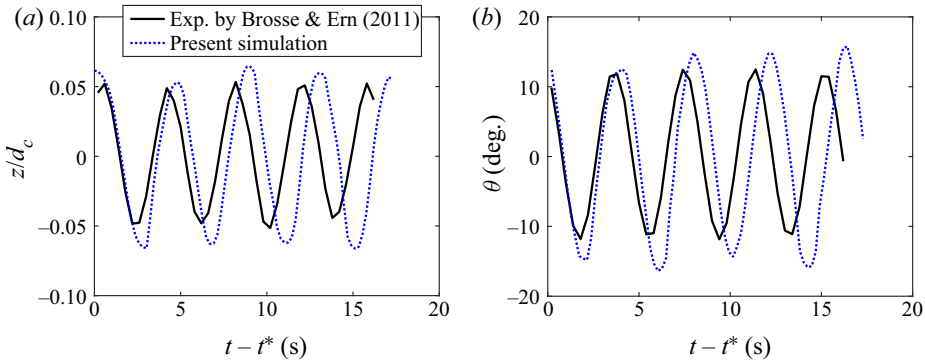


Figure 29. Time evolution of (a) the normalized horizontal displacement z/d_c and (b) the inclination angle θ at the steady falling state. The time instant t^* is 40 s for the experiment and t^* is 21.3 s for the simulation to ensure that the comparison starts from the same phase position of the periodic oscillations. The controlling parameters are $AR = 0.1$ and $Re = 115$.

disk is $Re = u_l d_c / \nu_f = 115$. These parameters in the present simulation are the same as those in an experimental case by Brosse & Ern (2011). In the experiment (Brosse & Ern 2011), the disks were released at separate times through a 20 cm long tube. The velocities and orientation of the disks and the vertical distance between them were unclear when they moved out of the tube. Thus, it is impossible to ensure the same initial conditions for the previous experiment and the present simulation. To produce the similar process of two disks falling in tandem, in the present simulation, the two disks are released simultaneously with a small initial inclination angle of $\theta_0 = 5^\circ$ and an initial distance of $d_2 = 2.282d_{eq}$ (see figure 5). The trailing disk catches up to the leading one, and the two disks fall together steadily in a *Y*-configuration. This falling pattern is similar to the experimental observation by Brosse & Ern (2011) with same set of parameters ($AR = 0.1$ and $Re = 115$). The quantitative comparison between the experimental and simulation results is made in figure 29. The similar periodic oscillation patterns of the horizontal displacement z/d_c and inclination angle θ are obtained between the experiment and simulation. However, larger periods and magnitudes of the oscillations are observed in the simulation than in the experiment. The discrepancies may be attributed to the differences in the initial conditions between the experiment and simulation. In addition, a small disturbance in the fluid can cause a notable change in the dynamics of the disks, causing the differences even between two independent experimental runs. It is very hard to ensure completely identical conditions between the experiment and simulation.

Appendix B. Conversion of the lattice units used in the lattice Boltzmann method (LBM) to the international system of units (SI)

The conversion factor of length is expressed as

$$C_H = \frac{\tilde{D}}{D}, \quad (\text{B1})$$

in which \tilde{D} and D represent the cylinder diameters in physical unit and lattice unit, respectively. To ensure the equality of Reynolds numbers between the physical unit system and lattice unit system, the conversion factor of time is derived as

$$C_t = \frac{C_H^2}{C_\nu}, \quad (\text{B2})$$

where C_ν is the conversion factor of kinematic viscosity and has the form:

$$C_\nu = \frac{\tilde{\nu}}{\nu}, \tag{B3}$$

and $\tilde{\nu}$ and ν are the kinematic viscosities in the physical unit and lattice unit, respectively. Thus, the conversion factor of velocity is obtained as

$$C_u = \frac{C_H}{C_t}. \tag{B4}$$

The velocity \tilde{u} and time \tilde{t} in the physical units can be determined using the corresponding quantities u and t in the lattice units:

$$\tilde{u} = uC_u, \tag{B5}$$

and

$$\tilde{t} = tC_t. \tag{B6}$$

Appendix C. Features of the two-disk falling patterns

The major features of the ten falling patterns are described in [table 4](#).

Pattern no.	Description	Disk dynamics	2-D/3-D motion	Type of contacts	Orientation of disks (direction of major axis of the disk)
1	Steady falling with enduring disk–disk contact	Steady	2-D	Enduring	Vertical
2	Periodic swinging with intermittent disk–disk contacts	Periodic oscillating	Transitional	Multiple	Oscillating about vertical axis
3	Three-dimensional oscillating with intermittent contacts	Periodic oscillating	3-D	Multiple	Oscillating about vertical axis
4	Separation after a single collision and steady falling with major axes of the disks aligned vertically	Steady	2-D	Single	Vertical
5	Separation after a single collision and chaotic three-dimensional oscillating with the major axes aligned almost vertically	Chaotic oscillating	3-D	Single	Oscillating about vertical axis
6	Falling without disk–disk contact and three-dimensional oscillating with the major axes aligned almost vertically	Chaotic oscillating	3-D	No contact	Oscillating about vertical axis
7	Separation after a single collision and steady falling with major axes aligned horizontally	Steady	2-D	Single	Horizontal

Table 4. For caption see next page.

Pattern no.	Description	Disk dynamics	2-D/3-D motion	Type of contacts	Orientation of disks (direction of major axis of the disk)
8	Separation after a single collision and steady falling with no preferential alignment of the major axes	Steady	2-D	Single	Randomly horizontal or vertical
9	Falling without disk–disk contact and three-dimensional oscillating with the major axes aligned almost horizontally	Chaotic oscillating	3-D	No contact	Oscillating about horizontal axis
10	Tumbling without disk–disk contact	Tumbling	3-D	No contact	Randomly oscillating and rotating

Table 4. Features of the two-disk falling patterns.

REFERENCES

- AIDUN, C.K. & DING, E.-J. 2003 Dynamics of particle sedimentation in a vertical channel: period-doubling bifurcation and chaotic state. *Phys. Fluids* **15**, 1612–1621.
- ARDEKANI, M.N., COSTA, P., BREUGEM, W.-P. & BRANDT, L. 2016 Numerical study of the sedimentation of spheroidal particles. *Intl J. Multiphase Flow* **87**, 16–34.
- AUGUSTE, F., MAGNAUDET, J. & FABRE, D. 2013 Falling styles of disks. *J. Fluid Mech.* **719**, 388–405.
- BOUZIDI, M., FIRDAOUSS, M. & LALLEMAND, P. 2001 Momentum transfer of a Boltzmann-lattice fluid with boundaries. *Phys. Fluids* **13**, 3452–3459.
- BRÄNDLE DE MOTTA, J.C., BREUGEM, W.-P., GAZANION, B., ESTIVALEZES, J.-L., VINCENT, S. & CLIMENT, E. 2013 Numerical modelling of finite-size particle collisions in a viscous fluid. *Phys. Fluids* **25**, 083302.
- BROSSE, N. & ERN, P. 2011 Paths of stable configurations resulting from the interaction of two disks falling in tandem. *J. Fluids Struct.* **27**, 817–823.
- BROSSE, N. & ERN, P. 2014 Interaction of two axisymmetric bodies falling in tandem at moderate Reynolds numbers. *J. Fluid Mech.* **757**, 208–230.
- CAIAZZO, A. 2008 Analysis of lattice Boltzmann nodes initialisation in moving boundary problems. *Prog. Comput. Fluid Dyn.* **8**, 3–10.
- CHRUST, M., BOUCHET, G. & DUŠEK, J. 2013 Numerical simulation of the dynamics of freely falling discs. *Phys. Fluids* **25**, 044102.
- CLIFT, R., GRACE, J.R. & WEBER, M.E. 1978 *Bubbles, Drops, and Particles*. Academic Press.
- D’HUMIERES, D. 2002 Multiple relaxation time lattice Boltzmann models in three dimensions. *Phil. Trans. R. Soc. Lond. A* **360**, 437–451.
- ERN, P. & BROSSE, N. 2014 Interaction of two axisymmetric bodies falling side by side at moderate Reynolds numbers. *J. Fluid Mech.* **741**, R6.
- ERN, P., RISSO, F., FABRE, D. & MAGNAUDET, J. 2012 Wake-induced oscillatory paths of bodies freely rising or falling in fluids. *Annu. Rev. Fluid Mech.* **44**, 97–121.
- FENG, J. & JOSEPH, D.D. 1995 The unsteady motion of solid bodies in creeping flows. *J. Fluid Mech.* **303**, 83–102.
- FIELD, S.B., KLAUS, M., MOORE, M.G. & NORI, F. 1997 Chaotic dynamics of falling disks. *Nature* **388**, 252–254.
- FORNARI, W., ARDEKANI, M.N. & BRANDT, L. 2018 Clustering and increased settling speed of oblate particles at finite Reynolds number. *J. Fluid Mech.* **848**, 696–721.
- FORTES, A.F., JOSEPH, D.D. & LUNDGREN, T.S. 1987 Nonlinear mechanics of fluidization of beds of spherical particles. *J. Fluid Mech.* **177**, 467–483.
- GUO, Y., WASSGREN, C., KETTERHAGEN, W., HANCOCK, B. & CURTIS, J. 2012a Some computational considerations associated with discrete element modeling of cylindrical particles. *Powder Technol.* **228**, 193–198.

- GUO, Y., WASSGREN, C., KETTERHAGEN, W., HANCOCK, B., JAMES, B. & CURTIS, J. 2012b A numerical study of granular shear flows of rod-like particles using the discrete element method. *J. Fluid Mech.* **713**, 1–26.
- GUO, Z., ZHENG, C. & SHI, B. 2002 Discrete lattice effects on the forcing term in the lattice Boltzmann method. *Phys. Rev. E* **65**, 046308.
- HE, X. & LUO, L.S. 1997 Lattice Boltzmann model for the incompressible Navier–Stokes equation. *J. Stat. Phys.* **88**, 927–944.
- KHARROUBA, M., PIERSON, J.-L. & MAGNAUDET, J. 2021 Flow structure and loads over inclined cylindrical rodlike particles and fibers. *Phys. Rev. Fluids* **6**, 044308.
- KODAM, M., BHARADWAJ, R., CURTIS, J., HANCOCK, B. & WASSGREN, C. 2010 Cylindrical object contact detection for use in discrete element method simulations. Part I – contact detection algorithms. *Chem. Engng Sci.* **65**, 5852–5862.
- LADD, A.J.C. 1994 Numerical simulations of particulate suspensions via a discretized Boltzmann equation. Part 1. Theoretical foundation. *J. Fluid Mech.* **271**, 285–309.
- LEE, C., SU, Z., ZHONG, H., CHEN, S., ZHOU, M. & WU, J. 2013 Experimental investigation of freely falling thin disks. Part 2. Transition of three-dimensional motion from zigzag to spiral. *J. Fluid Mech.* **732**, 77–104.
- LI, M., ZHANG, Y., WANG, Y. & WU, C. 2020 Scaling law of contact time for particles settling in a quiescent fluid. *Intl J. Multiphase Flow* **129**, 103317.
- NIE, D., GUAN, G. & LIN, J. 2021 Interaction between two unequal particles at intermediate Reynolds numbers: a pattern of horizontal oscillatory motion. *Phys. Rev. E* **103**, 013105.
- NIE, D. & LIN, J. 2020 Simulation of sedimentation of two spheres with different densities in a square tube. *J. Fluid Mech.* **896**, A12.
- PENG, C., TENG, Y., HWANG, B., GUO, Z.L. & WANG, L.-P. 2016 Implementation issues and benchmarking of lattice Boltzmann method for moving rigid particle simulations in a viscous flow. *Comput. Maths Applics* **72**, 349–374.
- PIERSON, J.-L., HAMMOUTI, A., AUGUSTE, F. & WACHS, A. 2019 Inertial flow past a finite-length axisymmetric cylinder of aspect ratio 3: effect of the yaw angle. *Phys. Rev. Fluids* **4**, 044802.
- TANGRI, H., GUO, Y. & CURTIS, J.S. 2017 Packing of cylindrical particles: DEM simulations and experimental measurements. *Powder Technol.* **317**, 72–82.
- TANGRI, H., GUO, Y. & CURTIS, J.S. 2019 Hopper discharge of elongated particles of varying aspect ratio: experiments and DEM simulations. *Chem. Engng Sci.* **X 4**, 100040.
- TCHOUFAG, J., FABRE, D. & MAGNAUDET, J. 2014 Global linear stability analysis of the wake and path of buoyancy-driven disks and thin cylinders. *J. Fluid Mech.* **740**, 278–311.
- TOZZI, E.J., SCOTT, C.T., VAHEY, D. & KLINGENBERG, D.J. 2011 Settling dynamics of asymmetric rigid fibers. *Phys. Fluids* **23**, 033301.
- VERJUS, R., GUILLOU, S., EZERSKY, A. & ANGILELLA, J.-R. 2016 Chaotic sedimentation of particle pairs in a vertical channel at low Reynolds number: multiple states and routes to chaos. *Phys. Fluids* **28**, 123303.
- WANG, L.-P., PENG, C., GUO, Z. & YU, Z. 2016 Lattice Boltzmann simulation of particle-laden turbulent channel flow. *Comput. Fluids* **124**, 226–236.
- WEN, B.H., ZHANG, C.Y., TU, Y.S., WANG, C.L. & FANG, H.P. 2014 Galilean invariant fluid-solid interfacial dynamics in lattice Boltzmann simulations. *J. Comput. Phys.* **266**, 161–170.
- WILLMARTH, W.W., HAWK, N.E. & HARVEY, R.L. 1964 Steady and unsteady motions and wakes of freely falling disks. *Phys. Fluids* **7**, 197–208.
- ZASTAWNY, M., MALLOUPPAS, G., ZHAO, F. & WACHEM, B. 2012 Derivation of drag and lift force and torque coefficients for non-spherical particles in flows. *Intl J. Multiphase Flow* **39**, 227–239.
- ZHANG, Y., ZHANG, Y., PAN, G. & HAERI, S. 2018 Numerical study of the particle sedimentation in a viscous fluid using a coupled DEM-IB-CLBM approach. *J. Comput. Phys.* **368**, 1–20.
- ZHONG, H., CHEN, S. & LEE, C. 2011 Experimental study of freely falling thin disks: transition from planar zigzag to spiral. *Phys. Fluids* **23**, 110.