

## ARTICLES

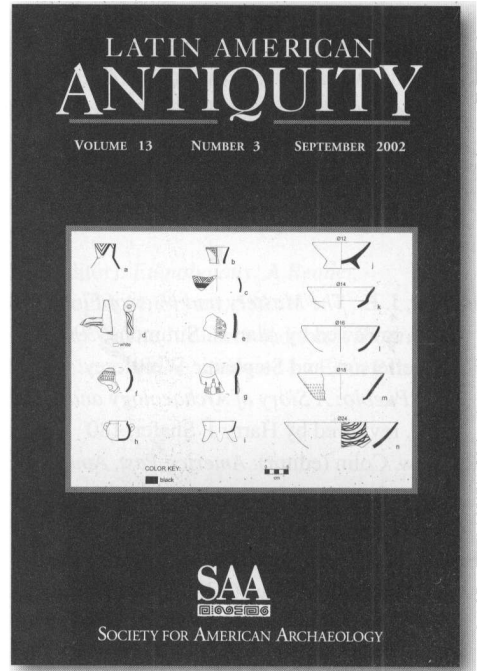
- 251 Houses on a Hill: Classic Period Life at El Palmillo, Oaxaca, Mexico  
*Gary M. Feinman, Linda M. Nicholas, and Helen R. Haines*
- 279 Feasting and Ancestor Veneration at Chinchawas, North Highlands of Ancash, Peru  
*George F. Lau*
- 305 Domestic and Political Lives of Classic Maya Elites: The Excavation of Rapidly Abandoned Structures at Aguateca, Guatemala  
*Takeshi Inomata, Daniela Triadan, Erick Ponciano, Estela Pinto, Richard E. Terry, and Markus Eberl*

## REPORTS

- 331 Soil Chemical Analysis of Ancient Activities in Cerén, El Salvador: A Case Study of a Rapidly Abandoned Site  
*J. Jacob Parnell, Richard E. Terry, and Payson Sheets*
- 343 The Potential Role of Small Depressions as Water Storage Features in the Central Maya Lowlands  
*Estella Weiss-Krejci and Thomas Sabbas*

## REVIEWS

- 359 The Protoclassic in the Maya Lowlands, by Duncan Pring  
*T. Patrick Culbert*
- 360 Maya Survivalism, edited by Ueli Hostettler and Matthew Restall  
*Antje Gunsenheimer*
- 361 Estudios cerámicos en el occidente y norte de México, edited by Eduardo Williams and Phil C. Weigand  
*Catherine Liot and Susana Ramírez Urrea*
- 363 Prehispanic Settlement Patterns in the Upper Mantaro and Tarma Drainages, Junín, Peru. Volume 1, Parts 1 and 2, The Tarama-



Charles M. Hastings, and Ramiro Matos M.  
*Richard L. Burger*

- 364 Prehispanic Chiefdoms in the Valle de la Plata, Volume 4: Vertical Economy, Interchange, and Social Change during the Formative Period / Cacicazgos Prehispánicos del Valle de la Plata, Tomo 4: Economía Vertical, Intercambio, y Cambio Social durante el Período Formativo, by Dale W. Quattrin  
*Robert Rosenswig*
- 365 Caminos Precolombinos: las vías, los ingenieros y los viajeros, edited by Leonor Herrera and Marianne Cardale De Schrimppff  
*John R. Topic*
- 366 Island Lives: Historical Archaeologies of the Caribbean, edited by Paul Farnsworth  
*Kathleen A. Deagan*

## NOTICE TO AUTHORS

*American Antiquity* publishes original papers on the archaeology of the New World and on archaeological method, theory, and practice worldwide. Authors of papers on Latin American topics are encouraged to submit their work to *Latin American Antiquity*. Papers on Latin American archaeology addressing broad methodological, theoretical, or comparative issues may be accepted by either journal after consultation with the editors. Authors submit manuscripts to the editor for consideration as ARTICLES, REPORTS, COMMENTS, or FORUM essays. REVIEWS and BOOK NOTES are solicited by the respective associate editor. OBITUARIES should be submitted to the editor, *The SAA Archaeological Record*, for publication (see *SAA Bulletin* March/April 1996, p. 7, for further details).

Authors should submit an original and four copies of their manuscripts, including all figures, tables, references, and notes. Detailed information on policy, style, and technical matters of manuscript preparation is given in the "Editorial Policy, Information for Authors, and Style Guide for *American Antiquity* and *Latin American Antiquity*," which appeared in the October 1992 issue (57:749–770) and can be read on the World Wide Web at <http://www.saa.org/Publications/StyleGuide/styframe.html>.

The editor reserves the right to evaluate manuscripts (with or without peer review) for appropriate subject matter, quality, length, and compliance with the style guide. Manuscripts may be returned to authors if they fail to meet expectations or conform to these guidelines. Manuscripts are evaluated by the editor in consultation with peer referees, as appropriate. The editor has the final responsibility for all decisions regarding manuscripts. The review process generally takes a minimum of two to four months. Authors will be notified as soon as a decision is reached to accept (outright or with revisions) or reject a manuscript.

To ensure the prompt receipt and handling of manuscripts, please send them to the editor: Timothy A. Kohler, Department of Anthropology, Washington State University, Pullman, WA 99164-4910. Inquiries regarding the style guide and the production of the journal should be directed to: John Neikirk, Society for American Archaeology, 900 Second Street, N.E., Suite 12, Washington, DC 20002-3557.

595 Editor's Corner

## FORUM

597 Placing Archaeology at the Center of Socio-Natural Studies  
*Sander van der Leeuw and Charles L. Redman*

## ARTICLES

607 War in the Southwest, War in the World  
*Stephen H. Lekson*

625 The Vacant Quarter Revisited: Late Mississippian Abandonment of the Lower Ohio Valley  
*Charles R. Cobb and Brian M. Butler*

## REPORTS

643 The Analysis of Cutmarks on Archaeofauna: A Review and Critique of Quantification Procedures, and a New Image-Analysis GIS Approach  
*Yoshiko Abe, Curtis W. Marean, Peter J. Nilssen, Zelalem Assefa, and Elizabeth C. Stone*

665 Early Irrigation on the Colorado Plateau near Zuni Pueblo, New Mexico  
*Jonathan E. Damp, Stephen A. Hall, and Susan J. Smith*

677 Sacred Earthen Architecture in the Northern Southwest: The Bluff Great House Berm  
*Catherine M. Cameron*

697 *Olivella* Beads from Spiro and the Plains  
*Laura Kozuch*

710 Specialized Ground Stone Production in the Casas Grandes Region of Northern Chihuahua, Mexico  
*Todd L. VanPool and Robert D. Leonard*

731 On the Spur of the Moment: Effects of Age and Experience on Hafted Stone Scraper Morphology  
*Kathryn J. Weedman*

745 White-Tailed Deer Meat and Marrow Return Rates and Their Application to Eastern Woodlands Archaeology  
*T. Cregg Madrigal and Julie Zimmermann Holt*

## COMMENTS

760 Mortuary Ambiguity: The Ventureño Chumash Case  
*Jeanne E. Arnold and Terisa M. Green*

772 Further Considerations on the Emergence of Chumash Chiefdoms  
*Lynn H. Gamble, Phillip L. Walker, and Glenn S. Russell*

795 INDEX TO VOLUME 67

*On the Cover:* The Location of the Bluff Great House, Chaco Canyon (from "Sacred Earthen Architecture in the Northern Southwest: The Bluff Great House Berm," by Catherine M. Cameron, p. 679)

⊗ The paper used in this publication meets the requirements of ANSI/NISO Z39.48-1992  
(Permanence of Paper).