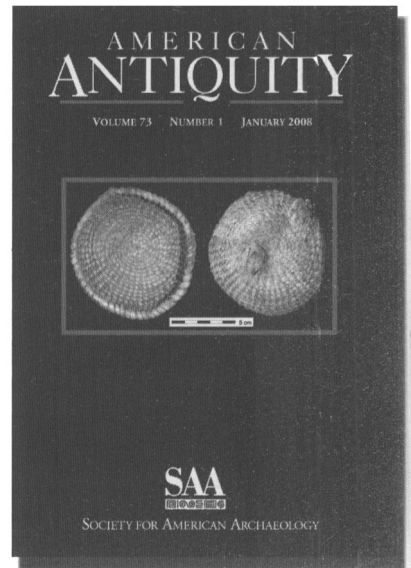


ARTICLES

- 3 The Cultural Transmission of Great Basin Projectile-Point Technology: An Experimental Simulation
Alex Mesoudi and Michael J. O'Brien
- 29 History and Process in Village Formation: Context and Contrasts from the Northern Southwest
Catherine M. Cameron and Andrew I. Duff
- 59 Evolution of a Late Prehistoric Winter Village on the Interior Plateau of British Columbia: Geophysical Investigations, Radiocarbon Dating, and Spatial Analysis of the Bridge River Site
Anna Marie Prentiss, Guy Cross, Thomas A. Foor, Mathew Hogan, Dirk Markle and David S. Clarke

REPORTS

- 83 The Role of Basketry In Early Holocene Small Seed Exploitation: Implications of a Ca. 9,000 Year-Old Basket from Cowboy Cave, Utah
Phil R. Geib and Edward A. Jolie
- 103 The Beauty of "Ugly" Eskimo Cooking Pots
Lisa Frink and Karen G. Harry
- 121 Ethnoarchaeological and Archaeological Perspectives on Ceramic Vessels and Annual Accumulation Rates of Sherds
Alan P. Sullivan, III
- 136 Streamflow and Population Change in the Lower Salt River Valley of Central Arizona, Ca. A.D. 775 to 1450
Scott E. Ingram



NOTICE TO AUTHORS

Latin American Antiquity publishes original papers on the archaeology, prehistory, and ethnohistory of Latin America, i.e., Mesoamerica, Central America, and South America, together with culturally affiliated adjacent regions. Papers may also treat more general theoretical and methodological issues with relevance to Latin America. Authors submit manuscripts to the editor for consideration as ARTICLES or REPORTS in English, Spanish, or Portuguese. Authors should submit an original and three copies of their manuscripts (including all figures, tables, references, and notes), along with an abstract in both English and Spanish. Detailed information on policy, style, and technical matters of manuscript preparation is given in English and in Spanish in the "Editorial Policy, Information for Authors, and Style Guide for *American Antiquity* and *Latin American Antiquity*," available through the World Wide Web at <http://www.saa.org/Publications/StyleGuide/styframe.html>. For additional information, updates, or clarification, consult the managing editor at the SAA office in Washington, D.C.

BOARD OF DIRECTORS OF THE SOCIETY FOR AMERICAN ARCHAEOLOGY

Officers

President: DEAN SNOW, Pennsylvania State University, 409 Carpenter Bldg, Department Of Anthropology University Park, PA 16802-3404

Secretary: MICHAEL A. GLASSOW, University of California-Santa Barbara, Department of Anthropology, Santa Barbara, CA 93106

Treasurer: SUSAN M. CHANDLER, Alpine Arch Consultants Inc, PO Box 2075, 900 South Townsend Ave. Montrose, CO 81402-2075

Treasurer-elect: PAUL D. WELCH, Southern Illinois University, Department of Anthropology MC 4502, 3521 Faner Hall, Carbondale, IL 62901-4328

Board Members-at-Large

CHRISTOPHER D. DORE, Statistical Research, Inc., PO Box 31865, 6099 E. Speedway Blvd., Tucson, AZ 85751

JONATHAN DRIVER, Simon Fraser University, Department Of Archaeology, 8888 University Drive, Burnaby, BC V5A -1S6, Canada

KATHRYN KAMP, Grinnell College, Department of Anthropology, Grinnell, IA 50112

DOROTHY T. LIPPERT, National Museum of Natural History, NMNH Repatriation Office MRC-138, PO Box 37012, Washington, DC 20013-7012

EMILY MCCLUNG DE TAPIA, Irist de Investigaciones Antro, UNAM/CU Circuito Exterior S/n, Coyoacan, Mexico DF, DIF 04510 Mexico

SCOTT E. SIMMONS, Department of Anthropology, University of North Carolina Wilmington, Wilmington, NC 28403

Ex-Officio Board Member

TOBI A. BRIMSEK, Executive Director, Society for American Archaeology, 900 Second St. NE, Suite 12, Washington, DC 20002-3560

ARTICLES

- 3 Tiwanaku Influence In The South Central Andes: Strontium Isotope Analysis And Middle Horizon Migration
Kelly J. Knudson
- 25 El Maíz (Zea Mays) En El Mundo Prehispánico De Chile Central
Fernanda Falabella, M. Teresa Planella, y Robert H. Tykot
- 47 The Pre-Arawak Pottery Horizon In The Antilles: A New Approximation
Raniel Rodríguez Ramos, Elvis Babilonia, L. Antonio Curet, and Jorge Ulloa

REPORTS

- 64 Domestic Practice In Postclassic Santa Isabel, Nicaragua
Geoffrey G. McCafferty
- 83 Stingray Spine Use And Maya Bloodletting Rituals: A Cautionary Tale
Helen R. Haines, Philip W. Willink, and David Maxwell

REVIEWS

- 99 Intermediate Elites in Pre-Columbian States and Empires, by Christina M. Elson and R. Allen Covey
Bradford W. Andrews
- 100 The Postclassic to Spanish-Era Transition in Mesoamerica: Archaeological Perspectives, edited by Susan Kepecs and Rani T. Alexander
Michael E. Smith
- 101 Janaab' Pakal of Palenque: Reconstructing the Life and Death of a Maya Ruler, edited by Vera Tiesler and Andrea Cucina
John Dudgeon

Book Notes

- 103 Stone Houses and Earth Lords: Maya Religion in the Cave Context, edited by Keith M. Prufer and James E. Brady
John Tomic

On the Cover: Upper: Feathered serpent image on Mombacho Polychrome Incised variety. Lower: Ehecatl vessel supports from Papagayo Polychrome Cervantes variety. (from *Domestic Practice In Postclassic Santa Isabel, Nicaragua*, by Geoffrey G. McCafferty, page 75.)

⊗ The paper used in this publication meets the requirements of ANSI/NISO Z39.48-1992
(Permanence of Paper).