

Object Index

- χ Cyg, 353
- η Car, 342
- ω Cen, 461
- ζ Puppis, 71
- [WCE] stars, 96
- [WC]-PG 1159, 92
- 89 Her, 314, 461

- A 14, 287
- A 15, 120
- A 21, 36, 37, 43, 485, 490
- A 24, 43, 487, 489, 490
- A 29, 43, 44
- A 30, 194, 215, 371
- A 31, 43, 211, 487, 489, 490
- A 35, 36, 37, 45
- A 39, 120, 187
- A 4, 204
- A 65, 287
- A 66, 211
- A 7, 43, 120, 211
- A 70, 239
- A 74, 36, 37, 43, 211, 487, 490
- A 78, 287, 371
- A 8, 204
- Abell 12, 214
- Abell 30, 194, 198, 208, 214, 235, 261
- Abell 33, 214
- Abell 35, 79, 105, 111
- Abell 36, 214
- Abell 41, 79, 271
- Abell 43, 103
- Abell 46, 79, 271
- Abell 58, 392
- Abell 63, 79, 271
- Abell 65, 79, 271

- Abell 70, 287
- Abell 78, 18, 235
- Abell 80, 18
- AC Her, 314
- AFGL 2343, 346
- AFGL 2688, 4, 5, 139, 245, 306, 307
- AFGL 4104, 361
- AFGL 4106, 149
- AFGL 618, 5, 245, 284, 307, 359

- BB-1, 236
- BC Tau, 356
- BD +28 4211, 290
- BD -22 3467, 105, 106, 111
- BD 28 4211, 45
- BD 30 3639, 10, 34, 35, 37, 93, 99, 108,
214, 215, 221, 242, 328, 329,
485, 487, 489, 491
- BD 33 2642, 12
- BD 39 4926, 463
- Be Uma, 79
- BI 3-10, 48
- BI 3-13, 48
- Bond 1, 464
- Bond 2, 464

- Centaurus A, 472, 478
- CIT 6, 151, 359
- CK 351-802, 334
- CK 352-815, 334
- CK 354-804, 334
- CK 378-800, 334
- CK 428-900, 334
- CK 474-931, 334
- Cluster, 464
- Cn 3-1, 283

Object Index

- CPD -56 8032, 19, 100–102, 119, 485
CQ Muscae 1983, 3, 169
CRL 2688, 152, 155, 156, 195, 375
CRL 618, 343
- DDDM-1, 120, 281, 282, 479
DHW 5, 44
DS 1, 79
DS 2, 239
Dumbbell, 240
- EC11575-1845, 131
EGB 1, 61
Egg nebula, 2, 5, 6, 8, 152, 304, 307,
308, 310, 375
Eskimo Nebula, 177
- FG 1, 208
FG Sge, 382, 391
Fleming 1, 198, 200, 201
Fornax, 479
Frosti Leo Nebula, 195
- GL 2343, 326
GL 2688, 326
GL 618, 326
GL 915, 326, 328
GX Mon, 357
- H 1-35, 72
H 1-36, 48
H 1-63, 48
H 1-65, 72
H 4-1, 236, 288
HaTr 4, 79
Hb 12, 38
Hb 4, 198
Hb 7, 412
HD 35914, 104
HD 44179, 74, 211, 314, 315
HD 46703, 463
HD 52961, 314, 315
HD 56126, 314
HD 112313, 79, 111
HD 131356, 314
HD 161796, 5, 7, 307, 309, 326
- HD 167362, 19
HD 172324, 72
HD 179821, 149, 314
HD 187885, 314
HD 213985, 315
HD 224930, 264
He 1-1, 201
He 2-113, 19, 100, 102
He 2-108, 68
He 2-11, 44
He 2-36, 36, 37
He 2-55, 115, 269
He 2-113, 119
He 2-114, 240
He 2-131, 57, 63, 68
He 2-141, 201
He 2-186, 201
He 2-428, 187
He 2-429, 201
He 2-436, 479
He 2-437, 187, 226
He 2-459, 118
He 2-1312, 201
He 3-1333, 485
He 3-1475, 199, 201
Helix, 240, 260, 326
Helix nebula, 144, 193, 332
Hen1357, 123
Henize 2-131, 56
Hf 1-48, 246
HFG 1, 79, 287
HH 30, 81
HR 4049, 147, 314
HS 0158+2335, 393
HS 0231+0505, 393
HS 0444+0453, 393
HS 0615+6535, 393
HS 0713+3958, 393
HS 2027+0651, 393
HS 2033+0507, 393
HS 2246+0640, 393
HS 2324+3944, 103, 110, 393
Hu 1-2, 38, 199, 201, 242, 267
Hu 2-1, 251, 360
Hubble 12, 221, 242

Object Index

- Hubble 4, 194
Hubble 5, 274
HW 6, 44
- I 09371+1212, 201
IC 289, 120
IC 351, 242
IC 418, 10, 38, 68, 104, 109, 221, 242,
244, 284, 328
IC 1295, 187
IC 1747, 115
IC 2149, 242
IC 3568, 251
IC 4406, 193, 212, 231, 239, 262
IC 4593, 67, 68, 187, 195, 201, 216, 226
IC 4634, 74, 201, 242
IC 4637, 68, 69, 211
IC 4846, 242
IC 4997, 6, 242, 251, 258, 278, 289, 360
IC 5117, 242, 360
IC 5148-50, 239
IC 5217, 38
IRAS 02229+6208, 4, 306
IRAS 04296+3429, 4, 306, 326, 365
IRAS 05113+1347, 4, 306, 365
IRAS 05238-0626, 365
IRAS 05341+0852, 4, 7, 306, 309, 365,
366
IRAS 05506+2414, 356
IRAS 06530-0213, 365
IRAS 07134, 328
IRAS 07134+1005, 4, 7, 306, 309, 326,
327, 329, 347, 352
IRAS 07253-2001, 365
IRAS 07399-1435, 352
IRAS 07430+1115, 4, 306
IRAS 08143-4406, 365
IRAS 08187-1905, 365
IRAS 09371+1212, 199, 364
IRAS 11385-5517, 357
IRAS 14429-4539, 365
IRAS 15154-5258, 235
IRAS 16342-3814, 352
IRAS 17086-2403, 365
IRAS 17150-3224, 6, 74, 308, 365
IRAS 17163-3835, 357
IRAS 17291-2402, 365
IRAS 17441-2411, 6, 74, 308, 365
IRAS 17514-1555, 19
IRAS 18095+2704, 7, 309
IRAS 18135-1641, 357
IRAS 18288-0837, 357
IRAS 18333-2357, 235
IRAS 18389-0424, 357
IRAS 18457-0154, 357
IRAS 19114+0002, 5, 7, 307, 309
IRAS 19500-1709, 7, 309
IRAS 20000+3239, 4, 306
IRAS 20312+4035, 357
IRAS 21282, 118, 119
IRAS 21282+50, 147
IRAS 21282+5050, 74, 118, 119, 152,
329, 359
IRAS 22223+4327, 4, 7, 306, 309
IRAS 22272+5435, 4, 5, 7, 8, 306, 307,
309, 310, 326, 328, 346, 347
IRAS 22574+6609, 4, 306
IRAS 23304+6147, 4, 306, 365
IRC+10216, 139, 151, 362
- J 320, 120, 201
J-320, 204
JaFu 1, 243
JaFu 2, 243
JN 1, 214
- K 1-10, 249
K 1-16, 97
K 1-2, 74, 79, 81, 198, 210
K 1-22, 211
K 1-27, 117
K 1-3, 239
K 1-4, 246
K 2-16, 19
K 2-16, 119
K 2-7, 239
K 3-17, 38
K 3-24, 187, 201
K 3-26, 187
K 648, 58, 120, 122, 236, 288

Object Index

- KeWe 2, 22
KeWe 3, 22
KeWe 4, 22
KeWe 5, 22
KjPn 8, 198, 201, 255
KO 1, 120
KPD 0005+5106, 393
KV Vel, 79
- LMC, 410, 471, 475, 477
Lo 4, 97
Longmore 4, 18
LoTr 1, 79, 105
LoTr 4, 117
LoTr 5, 36, 37, 79, 105, 111, 214, 215
LSIV-12 111, 12
LT 5, 45
- M 1-11, 120
M 1-13, 240
M 1-16, 201
M 1-18, 274
M 1-25, 230
M 1-37, 72, 73
M 1-46, 234
M 1-61, 18
M 1-7, 152
M 1-75, 201
M 1-8, 274
M 1-92, 152, 199, 201, 238, 369
M 15, 243
M 2-20, 48
M 2-21, 48
M 2-29, 281
M 2-38, 48
M 2-43, 118
M 2-46, 187–189, 201
M 2-55, 204
M 2-9, 226, 327, 342
M 22, 243
M 3-1, 201
M 3-15, 230
M 3-20, 48
M 3-27, 283
M 3-3, 240, 274
- M 31, 410, 470
M 33, 470
M 4–18, 19
M 4-18, 119
MA 17, 93
Magellanic Clouds, 474
MT Ser, 79
My Cn 18, 74, 226
Mz3, 266
- N 66, 94, 126
N 67, 214, 215
NeVe 12, 26
NeVe 13, 26
NeVe 14, 26
NeVe 15, 26
NeVe 18, 26
NeVe 22, 26
NeVe 24, 26
NeVe 26, 26
NeVe 3-1, 22
NeVe 3-2, 22
NeVe 33, 26
NeVe 4, 26
NGC, 464
NGC 40, 6, 108, 238, 272, 284, 485
NGC 205, 438
NGC 246, 31, 34, 36, 37, 61, 97, 214,
264, 485, 486, 489, 491
NGC 1360, 214
NGC 1501, 60, 97, 115
NGC 1514, 36, 37
NGC 1535, 125, 211
NGC 2022, 120
NGC 2346, 36, 37, 74, 79, 213
NGC 2371-2, 97, 214
NGC 2392, 34, 37, 68, 69, 177, 199,
277, 486
NGC 2438, 187, 234, 321
NGC 2440, 38, 201, 218, 238, 240, 242,
254, 258, 284
NGC 2452, 115, 269
NGC 2610, 120
NGC 2867, 18, 97, 115, 269
NGC 3132, 36, 37, 205

Object Index

- NGC 3242, 30, 34, 37, 44, 68, 198, 201,
222, 274, 277, 290, 487, 489,
491
- NGC 3587, 6, 120, 214, 320
- NGC 3918, 201, 212
- NGC 4361, 277, 290
- NGC 5128, 470, 478
- NGC 5139, 464
- NGC 5189, 97, 115
- NGC 5307, 74, 201
- NGC 5882, 234
- NGC 5986, 461, 462
- NGC 6210, 34, 37, 194, 201, 214, 242,
250, 277, 278, 487, 489, 491
- NGC 6273, 462
- NGC 6302, 34, 37, 145, 176, 239, 266,
487, 489–491
- NGC 6309, 201, 211
- NGC 6326, 201
- NGC 6337, 201
- NGC 6369, 115
- NGC 6441, 12, 243
- NGC 650-1, 211
- NGC 6537, 274
- NGC 6543, 10, 38, 59, 74, 125, 134,
136, 145, 201, 214, 234, 242,
251, 252, 270, 278, 293
- NGC 6563, 213
- NGC 6567, 18, 242
- NGC 6572, 30, 34, 35, 37, 214, 237,
242, 487, 489, 491
- NGC 6578, 18
- NGC 6720, 30, 36, 37, 43, 120, 187,
193, 212, 234, 251, 487, 490
- NGC 6741, 242
- NGC 6751, 112, 113, 234, 239
- NGC 6752, 251
- NGC 6772, 37
- NGC 6790, 242
- NGC 6803, 242
- NGC 6818, 239, 242
- NGC 6822, 470
- NGC 6826, 66, 68, 125, 198, 213, 223,
234
- NGC 6853, 30, 36, 37, 43, 187, 214,
215, 487, 490
- NGC 6881, 38, 201, 232, 233
- NGC 6884, 242, 360
- NGC 6886, 242
- NGC 6891, 251
- NGC 6905, 97, 112, 113, 115, 214, 269
- NGC 7008, 211
- NGC 7009, 30, 31, 34, 37, 74, 166, 177,
194, 198, 213, 214, 242, 244,
258, 278, 489, 491
- NGC 7026, 38, 115, 238, 242, 275
- NGC 7027, 1, 2, 7, 10, 21, 31, 32, 34,
37, 61, 128, 130, 134, 139, 145,
152, 155, 167, 168, 206, 211,
212, 237, 240, 256, 258, 278,
279, 284–286, 484, 487, 489,
491
- NGC 7094, 103
- NGC 7139, 286
- NGC 7207, 193
- NGC 7293, 13, 36, 37, 120, 144, 208,
214, 215, 226, 260, 277, 334,
487, 490
- NGC 7297, 43
- NGC 7354, 194
- NGC 7662, 30, 31, 34, 37, 194, 237,
242, 267, 489, 491
- NML Cyg, 149
- OH 0739-14, 74
- OH 12.8-0.9, 349
- OH 15.7+0.8, 348, 349
- OH 17.7-2.0, 348, 349
- OH 37.1-0.8, 349
- Orion Nebula, 2, 168, 333
- Owl nebula, 6
- Pal 6, 12, 243
- PB 6, 18, 115, 269
- PC 19, 201
- Pe 1-1, 230
- Pe 1-17, 187, 201
- PG 0038+199, 393
- PG 0046+0746, 393

Object Index

- PG 0108+101, 45, 393
PG 0109+111, 393
PG 0122+200, 393
PG 0237+116, 393
PG 1159, 18, 61, 93, 97, 483
PK 112-001, 255
PK 36-57, 334
PM 1-188, 118, 119
PN 1902, 478
PN 4001, 478
PN 5601, 478
PN G000.1–02.3, 48
PN G000.4–01.9, 48
PN G000.7–02.7, 48
PN G000.9–02.0, 48
PN G002.1–02.2, 48
PN G002.2–06.3, 48
PN G005.7–05.3, 48
PN G011.4+17.9, 133
PN G049.3+88.1, 288
PN G116.2+08.5, 204
PN G144.3–15.5, 204
PN G167.0–00.9, 204
PN G190.3–17.7, 204
PN G214.9+07.8, 132
PN G231.8+04.1, 132
PN G249.3, 132
PN G253.5+10.7, 132
PN G257.5+00.6, 132
PN G277.1, 132
PN G283.6+25.3, 132
PN G293.6+10.9, 132
PN G308.2+07.7, 133
PN G324.1+09.0, 132
PN G332.5–16.9, 133
PN G353.5–04.9, 48
Ps 1, 58, 122
PuWe 1, 120
PW 1, 36, 37, 43, 487, 490
PW Vul, 36
- R Aqr, 36, 344, 345, 357
RE1738+665, 45
Red Rectangle, 6, 308, 315, 328, 362
Red Rectangle nebula, 314
- Ring, 240
ROA 24, 461, 464
Roberts 22, 361
RR Tel, 259, 342
RT Cyg, 358
RV Tau, 7, 309
RX J2117.1+3412, 97
- S 216, 13, 36, 37, 43, 487, 490
Sa We 3, 239
Sab6, 26
Sab7, 26
Sab8, 26
Sab10, 26
Sab11, 26
Sab12, 26
Sab13, 26
Sab15, 26
Sab16, 26
Sab17, 26
Sab21, 26
Sab24, 26
Sab25, 26
Sab27, 26
Sab30, 26
Sab31, 26
Sab32, 26
Sab33, 26
Sab34, 26
Sab35, 26
Sab36, 26
Sab37, 26
Sab38, 26
Sab39, 26
Sab40, 26
Sab41, 26
Sab42, 26
Sab43, 26
Sab44, 26
Sab47, 26
Sab49, 26
Sab50, 26
Sab59, 26
Sab61, 26
Sab63, 26

Object Index

Sab64, 26
Sab66, 26
Sab67, 26
Sab70, 26
Sab74, 26
Sab81, 26
Sab82, 26
Sab83, 26
Sab86, 26
Sab88, 26
Sakurai's object, 246, 390, 392
Salv1, 26
Sand 1, 113
Sand 2, 113
Sand 3, 97, 115
Sand 4, 113
Sand 5, 113
SAO 244567, 123, 124
Sc We 2, 74
Sh 2-68, 103
Sh 2-71, 226
SMC, 214, 477
SMP 20, 421
SMP 83, 126
Sp 1, 79
Sp 3, 412
SuWt 2, 79, 210
SwSt 1, 19, 118, 119

Tc 1, 68, 69
Ton 320, 45
Tweedy 1, 79

U Her, 373
U Mon, 314
UU Her, 7, 309
UU Sge, 79, 81
UX Cyg, 357

V 348, 119
V 348 Sgr, 119
V 477 Lyr, 79
V 605 Aql, 392
V 651 Mon, 79
V 664 Cas, 79

V Hya, 301
V477 Lyr, 81
VW Pyx, 79
Vy 1-1, 120
Vy 2-2, 238

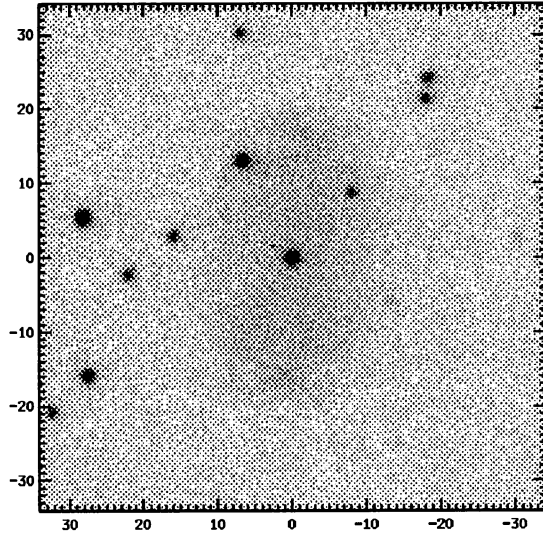
W And, 353
W Hya, 139, 149
W3(OH), 36
WCE, 91
WCL, 91
WD 1101+364, 3, 87
WD 1241-010, 3, 87
WD 1317+453, 3, 87
WD 2331+290, 3, 87
WeKG 1, 22
WeKG 2, 22
WeKG 3, 22
Wray 16-423, 479
Wray 17-1, 198
WS 35, 126

X Oph, 353

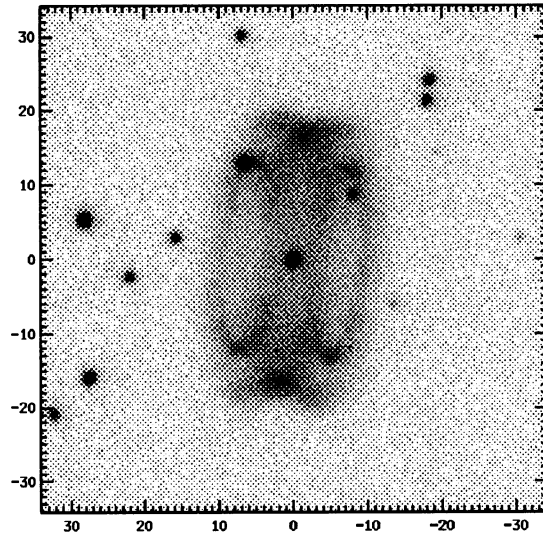
YM 29, 44, 214

ZNG 5, 464

$H\alpha$



[NII]



A 14 197.8-03.3

From: *"The IAC Morphological Catalog of Northern Galactic Planetary Nebulae"*,
A. Manchado, M.A. Guerrero, L. Stanghellini, M. Serre-Ricart.
courtesy: A. Manchado