



Endowments, expectations, and the value of food safety certification: experimental evidence from fish markets in Nigeria

Kelvin Mashisia Shikuku¹ · Erwin Bulte² · Carl Johan Lagerkvist³ · Nhuong Tran⁴

Received: 30 August 2021 / Revised: 22 August 2023 / Accepted: 23 August 2023 /
Published online: 14 September 2023
© The Author(s) 2023

Abstract

We study the impact of endowments and expectations on reference point formation and measure the value of food safety certification in the context of fish trading on real markets in Nigeria. In our field experiment, consumers can trade a known food item for a novel food item that is superior in terms of food safety—or vice versa. Endowments matter for reference point formation, but we also document a reverse endowment effect for a subsample of respondents. The effect of expectations about future ownership is weak and mixed. While expectations seem to affect bidding behavior for subjects “trading up” to obtain the certified food product (a marginally significant effect), it does not affect bids for subjects “trading down” to give up this novel food item. Finally, willingness to pay for safety certified food is large for our respondents—our estimate of the premium is bounded between 37 and 53% of the price of conventional, uncertified food.

Keywords Reference-dependent utility · Reverse endowment effect · Economic valuation · Food safety · Asymmetric valuation · Loss aversion

✉ Erwin Bulte
Erwin.bulte@wur.nl

Kelvin Mashisia Shikuku
k.m.shikuku@cgiar.org

Carl Johan Lagerkvist
carl-johan.lagerkvist@slu.se

Nhuong Tran
n.tran@cgiar.org

¹ International Livestock Research Institute (ILRI), Nairobi, Kenya

² Development Economics Group, Wageningen University, Wageningen, The Netherlands

³ Department of Economics, Swedish University of Agricultural Sciences, Uppsala, Sweden

⁴ WorldFish, c/o: Department of Fisheries, Yangon, Myanmar

JEL Classification C57 · C93 · D12 · D44 · D84

1 Introduction

In many circumstances, individuals make choices by evaluating possible outcomes against a reference outcome. This behavioral tendency is known as reference-dependence (Tversky & Kahneman, 1991). Reference-dependent utility and its implications have been studied in various settings, including technology adoption (Dupas, 2014), demand for housing (Simonsohn & Loewenstein, 2006), labor supply (Bulte et al., 2020; Crawford & Meng, 2011), sports (Pope & Schweitzer, 2011), and food choice (Caputo et al., 2019; Lusk et al., 2004). The workhorse model of reference-dependent utility, proposed by Kőszegi and Rabin (2006), builds on, extends, and generalizes ideas from prospect theory (Tversky & Kahneman, 1991). It captures an individual's utility as consisting of two components: conventional consumption utility and so-called gain–loss utility. Gain–loss utility emerges as outcomes deviate from a reference point. Loss aversion implies that utility losses from downward deviations are greater than the utility gains from equal-sized positive deviations.

While reference points play a key role in reference dependent utility theory, most of the early empirical work treated these points as “free parameters” (Gneezy et al., 2017). However, reference points are “constructed”, and what determines them has emerged as an important research topic. People may base reference points on current endowments (the status quo), but Tversky and Kahneman (1991) propose that “*there are situations in which gains and losses are coded relative to an expectation or aspiration level that differs from the status quo.*” The suggestion that expectations shape reference points was elaborated by Kőszegi and Rabin (2006). Work based on observational data struggled to empirically distinguish between the roles of endowments and expectations about ownership, as these concepts tend to correlate.¹ More recent experimental work on the origins of reference points produces ambiguous results (see below in Sect. 2). This work used “symmetric commodities” of the same (token) value, such as university mugs and pens, that cannot be easily ranked in terms of utility *ex-ante* (e.g., Banerji & Gupta, 2014; Ericson & Fuster, 2011; Heffetz & List, 2014).

We implemented a field experiment in Lagos, Nigeria, with consumers visiting a real fish market to study the role of endowments and expectations on stated values (bidding behavior in an auction experiment). Our auction experiment is based on a factorial design. Customers were endowed with one of two types of fish; either 500 g of food-safety certified live catfish or 500 g of conventional live fish. Customers

¹ Another challenge is distinguishing between how expectations affect reference points and other motivations affecting choice behavior. For example, subjects may associate prices with quality (Wenner 2015). Ericson and Fuster (2011) emphasize the importance of “transparent randomization” into treatment as subjects may otherwise try to make sense out of the task at hand, which may affect choice behavior.

endowed with conventional fish were told they might possibly “trade up” and obtain certified fish, while customers endowed with certified fish could perhaps “trade down” to obtain conventional fish. To vary expectations about future ownership we follow the literature and varied the probability of permission to trade one fish item for the other. This was accomplished through the roll of a die. In the “low probability of permission to trade” arm, participants expect to go home with their initial endowment. In the “high probability of permission to trade” arm, participants realize that they may be able to exchange their endowment for something else. Economic values for trading up (or down) are subsequently measured by eliciting willingness to pay (or accept) for trading the fish endowments in a Becker-DeGroot-Marschak (BDM) auction. The analysis is based on the bidding behavior of participants in the four experimental sub-groups thus created.

Our main contribution is to provide estimates of the causal effect of endowments and expectations on reference point formation “in the field”, rather than in a lab setting.² We document expectations-based reference dependence for traded commodities that differ in quality, and can be ranked in terms of utility. Policy interventions in the form of either mandatory or market-based approaches aimed at minimizing potential health hazards within food-producing sectors are increasingly recognized as relevant for improving welfare in developing countries (e.g., Birol et al., 2015; De Groot et al., 2016; Hoffmann et al., 2019; Ortega et al., 2011). The literature suggests that consumers in low-income countries are increasingly willing to pay for food safety (e.g., Alphonse & Alfnes, 2016; Ifft et al., 2012; Owusu-Sekyere et al., 2014), and that the size of price premiums varies across food items and types of consumers and in many contexts is bound by ability to pay (e.g., Ortega et al., 2011).

We find strong support for reference-dependence in our sample. The minimum willingness to accept (WTA) for trading down (exchanging the superior item for the conventional one) is 40% greater than the maximum willingness to pay (WTP) for the reverse trade. However, WTA does not stochastically dominate WTP. We document a reverse endowment effect for a specific subsample of the respondents, for whom WTP for an upgrade exceeds WTA for a downgrade. This confirms earlier findings of reverse endowment effects when exchanging quality-differentiated versions of the same product (Banerji & Rampal, 2020; Lusk et al., 2004). Our third result is that expectations about future ownership seem to matter for the construction of reference points in some trades, but not others. Expectations seem to affect WTP for subjects endowed with the conventional fish commodity (a marginally significant effect), but not WTA for subjects endowed with the superior alternative (a precisely estimated null result). Our final result is that average willingness to pay a premium for food safety certified fish is large in urban Nigeria.

Reference point formation is important for trading behavior of consumers, and outcomes will depend on whether consumers construct reference points based on expected prices of goods (Wenner, 2015; Caputo et al., 2019) or on expectations

² To our knowledge only Caputo et al. (2019) examined the effect of expectations-based reference dependence on valuation outside the lab, however they used non-experimental data from an online survey.

with respect to owning the goods (Ericson & Fuster, 2011). Anticipating that gain–loss utility considerations enter consumer decision-making, firms should adjust price setting and marketing policies—managing expectations in a desirable direction. Gain–loss utility will also affect appreciation of public goods, and should therefore enter in cost–benefit analyses of governments.

However, it is important to point out that the literature leaves open the possibility that the case for nonstandard preferences, including framing effects, gain–loss utility and reference points, has been overstated. For example, Cason and Plott (2014) demonstrate that subjects' failure to recognize the game form (i.e., the rules describing how choices map on outcomes) may result in systematic mistakes in the choices that they make. For example, while Cason and Plott (2014) use a second-price auction in their experiment, a sizable share of the respondents appears to mistakenly believe that they are participating in a first-price auction. This generates patterns in the data that appear consistent with nonstandard preferences, but should not be interpreted as such. In most experiments it is quite difficult to distinguish between choices based on preferences from choices based on mistakes. We try to attenuate concerns about mistakes and misconceptions by carefully instructing and training our respondents in how to behave in the BDM auction (see below) and by probing whether choices in our experiments systematically vary with the education level of the subjects (assuming that more highly-educated subjects are less likely to suffer from failure of game form recognition).

The remainder of the paper is structured as follows. After a short review of the literature (Sect. 2), we introduce the basic framework and derive testable predictions (Sect. 3). We explain the context and present the experimental design (Sect. 4) before turning to our data and results, in Sects. 5 and 6, respectively. In Sect. 7 we explore the heterogeneity of our treatment effects across different subsamples. A discussion ensues.

2 The literature

This paper aims to contribute to the literature on the effect of endowments and expectations on valuation—a literature primarily based on lab-style experiments in high-income countries. Abeler et al. (2011) organized a real-effort experiment where subjects either received a fixed wage or payment based on performance. Raising the fixed wage pushed up the reference point, crowding in additional effort for disappointment-averse participants.³ Dreyfuss et al. (2021) showed that expectations-based reference dependence explains apparently sub-optimal behavior whereby loss-averse individuals tend to intentionally choose seemingly dominated options in order to avoid disappointment in the future. Ericson and Fuster (2011) endowed participants with a mug and randomly assigned them to one of two treatment arms—with low (10%) or high (90%) probability of permission to exchange.

³ Observe that this experiment, with exogenous variation in expected income, may capture both an effect of expectations on reference points as well as an effect of aspirations.

In a follow-up experiment, they randomized the probability that participants would receive a mug, and subsequently elicited their WTA for it. When individuals expect to keep or receive an item, their WTA for that item increased.⁴ In a BDM auction setting, Banerji and Gupta (2014) experimentally manipulated the probability of winning the auction (conditional on bidding), by varying the support from which the strike price is randomly drawn. Subjects bid less when their probability of winning goes down, or when the expected strike price goes up.

However, not all experimental evidence supports the idea that expectations shape reference points. Cerulli-Harms et al. (2019) endowed participants with either a mug or money and exogenously varied the probability of *forced exchange*. The impact of variation in the probability of forced exchange on valuation was mixed and sensitive to small manipulations in experimental design.⁵ Heffetz and List (2014) showed participants a mug and a pen, and randomly assigned one of these items to them. They varied the probability with which subjects were allowed to trade, and study choice behavior with respect to exchange. Participants were more likely to choose the item assigned to them by chance, but choices did not vary across expectation treatments—while an endowment effect exists, it is not driven by expectations. This conclusion is supported by Wenner (2015), who manipulated price expectations in a lab setting and found that buying behavior was not affected by the *ex-ante* distribution of prices.⁶

Building on Abeler et al. (2011), Gneezy et al. (2017) manipulate both the size of fixed payments and probabilities of receiving a high fixed payment, low fixed payment, or piece rate. They find little evidence of expectations-based reference dependence: effort supply responds in a non-monotone fashion to changes in payments or probabilities. Finally, Smith (2019) explores whether lagged beliefs affect reference point formation. He sought to induce reference points by making subjects participate in a lottery with different probabilities of winning a prize, and then tested whether this probabilistic reference point affects valuation *after* the outcome of the lottery was realized (using a BDM design). While current endowments affected valuation, lagged beliefs did not.⁷

The paper also contributes to the literature on the demand for food safety in low-income settings. Most studies assessing WTP for food safety in developing countries use hypothetical approaches such as choice experiments, survey methods, or contingent valuation methods (Lagerkvist et al., 2013; Otieno & Nyikal, 2017;

⁴ Findings by Crawford and Meng (2011) and Gill and Prowse (2012) are also consistent with the hypothesis that expectations influence behavior, in a labor supply and real-effort task context, respectively.

⁵ Moreover, the Kőszegi and Rabin (2006) model of expectations-based reference point formation predicts a reverse endowment effect if the probability of forced exchange is greater than 50%. However, this prediction is not supported by the data of Cerulli-Harms et al. (2019).

⁶ Also see Karle et al. (2015) for theory and experimental work on price expectations, loss aversion and choice behavior.

⁷ This finding may reflect that the timing structure of the experiment does not match actual reference point formation. The effect of lagged expectations about lottery outcomes may be swamped by the effect of the actual outcome of the lottery—the literature provides little guidance regarding the speed of reference point adjustment in response to new information (Smith 2019).

Owusu-Sekyere et al., 2014). These approaches may be subject to significant upward bias. Notable exceptions are Ifft et al. (2012) who studied demand for safety of poultry products using an incentivized choice experiment, and found an important trade-off between safety and taste, Alphonse and Alfnes (2016) who examined consumers' WTP for tomatoes inspected for food safety standards and found significant price premiums, and Hoffmann et al. (2021) who examined the impact of a randomized safety-focused marketing campaign on sales of maize flour over time.

Some studies show that food safety standards are driven by consumers (e.g., Tran et al., 2013) while others conclude that consumer demand will not be a barrier to market-based approaches for food safety improvement (Ifft et al., 2012). A common finding of the literature is that consumers are increasingly willing to pay price premiums for food safety (Alphonse & Alfnes, 2016; Ifft et al., 2012; Lagerkvist & Okello, 2016; Lagerkvist et al., 2013; Ortega et al., 2011; Otieno & Nyikal, 2017; Owusu-Sekyere et al., 2014). We use an incentive compatible approach to study the value of safety certification of fish in a low-income country. Fish is known as food for the (relatively) poor in our study region. Food safety is a key concern for our sample population, and food safety certified catfish should be (weakly) preferred over uncertified catfish.

3 Theoretical framework

The Kőszegi and Rabin (2006) model assumes that utility depends on a consumer's k -dimensional consumption vector c and on a reference vector r , as follows:

$$u(c|r) = \sum_k m_k(c_k) + \sum_k \mu(m_k(c_k) - m_k(r_k)). \quad (1)$$

Utility depends on two components, separable across dimensions. The first term on the right hand side captures classical utility, or utility derived from consuming good k . The second term captures gain–loss utility, which is where reference-dependence enters. Value function μ is defined as: $\mu(x) = \eta x$ for $x > 0$ and $\mu(x) = \eta\lambda x$ for $x < 0$. Parameter η is the weight attached by the consumer to gain–loss utility and $\lambda > 1$ is the coefficient of loss aversion. The latter coefficient captures that utility losses associated with outcomes c_k below reference value r_k are greater than utility gains from equal-sized realizations in excess of that reference point.

Where does reference vector r in (1) come from? Early papers of reference-dependent utility demonstrated that reference points can be manipulated through random assignment of items, suggesting that status quo endowment levels determine reference points. For example, many subjects *ex-post* prefer an item randomly distributed to them over another item of the same monetary value (e.g., Tversky & Kahneman, 1991; Thaler, 1980; Knetsch, 1989). However, reference point formation may be a complex process, in which additional considerations could enter as well. One prominent alternative (or additional) candidate determinant of reference points is expectations about future ownership. According to the Kőszegi and Rabin (2006) theory, people base reference points on expectations about outcomes which, in turn,

are the result of people's own anticipated behavior (which should be consistent with actual behavior). This is called a *personal equilibrium*.

4 Experimental design

We implemented our experiment in Lagos State, Nigeria. Nigeria is the largest aquaculture producer in sub-Saharan Africa (WorldFish, 2018), and fish accounts for over 40% of total protein intake. However, food safety is an issue. Health hazards arise from contaminants during farming or quality loss due to poor handling and processing (Department of Fisheries and Aquaculture, 2009). Misuse of antimicrobials is a key driver of the emergence and spread of antimicrobial resistance (Olatoye & Basiru, 2013). Foodborne illnesses caused 420,000 deaths and 33 million disability-adjusted life years (DALYs) worldwide in 2010 (World Health Organization, 2015). One approach to improve production standards is certification for food safety (e.g., Birol et al., 2015; Bush et al., 2013).

Nigeria's Federal Department of Fisheries and Aquaculture initiated the process of voluntary certification and standardization of fisheries and aquaculture products in 2009. Operational guidelines and criteria for certification of aquaculture products in the country were developed to standardize operation of fish farms and to minimize hazards to human health. The aim is to increase consumer benefits, confidence, and traceability in aquaculture production, processing, and marketing (Department of Fisheries and Aquaculture, 2009). Participants in our study were indeed concerned about food safety issues. When asked, "How often do you think about the potential for fish you purchase in the market to be unsafe to eat", only 8% answered they never think about food safety. More than 70 percent were worried that consumption of unsafe fish could cause a member of their household to be sick.⁸ However, while consumers are well aware of the various food safety concerns associated with consuming uncertified fish, certified fish products are currently unavailable in the fish markets where we conducted our study. Certified fish is a "novel" and salient product for our subjects.

We partnered with Lagos State University to conduct a framed field experiment in October–November 2019 in a real fish market setting, attended frequently (often on a daily basis) by our participants. A pre-analysis plan (PAP) was registered prior to implementation of the experiment.⁹ We recruited participants seeking to purchase fish on the market. We used two distinct catfish commodities for trading in the experiment, similar in all but one important aspect—whether or not it was certified for food safety by the government. We introduced the certified fish on fish markets in Lagos, in two local administrative units (Ikorodu and Ojo) where we collected

⁸ General awareness exposure about food safety issues is high. Ninety percent of our study participants reported at least one reason why food can be unsafe for consumption. Similarly more than 80% identified at least one risk associated with consumption of unsafe food.

⁹ Pre-analysis plan: <https://aspredicted.org/rj2mu.pdf>, registered on September 27th, 2019. The research protocol was also reviewed and approved by the Institutional Review Board (IRB) of the International Food Policy Research Institute (IFPRI) (IRB application approval number: MTID-19-1159).

experimental data. It is important to state that we did not practice any deception—the certified item was indeed government-certified catfish.¹⁰

The research team visited market leaders a few weeks before the actual experiment took place to explain the purpose of the study, introduce the field team, and identify suitable places to set up the experiment. The experiment was also pre-tested, and based on the results we decided to implement a price range between 0 and 400 Naira for the bids. After the pilot but before we ran the actual experiment, a scandal about food safety issues broke out in Lagos (and other parts of Nigeria). In September 2019, the National Agency for Food and drug Administration and Control (NAFDAC) threatened nationwide shutdown of bakeries over illegal, unhygienic practices, which received a lot of media attention. Details of the scandal can be found here (<https://www.vanguardngr.com/2019/10/nafdac-threatens-nationwide-shutdown-of-bakeries-over-illegal-unhygienic-practices/>) and we return to this issue below as it may have affected bidding behavior.

For the actual experiment, each second consumer entering the market was approached and asked to participate in the experiment, until we reached a sample size of 400 visitors. Some 90% of invited consumers agreed to participate, with the remaining 10% declining because they could not spare 30 min—the duration of the experiment. Participants were informed that they participated in a field experiment run by a research team—not by salespersons for any particular type of fish. Participants received a show-up fee of 1000 Naira (\approx USD 2.8) in an envelope and their fish endowment. The market price of 500 g live catfish of the conventional type is approximately 500 Naira.

We implemented a factorial design. In Arm 1, 200 consumers received 500 g of uncertified live catfish. It was explained that the fish was obtained from the local market, so that conventional production and handling standards applied.¹¹ In Arm 2, 200 other consumers received 500 g of safety-certified live catfish. We explained that the fish was produced by a fish farmer approved by the government for following food safety guidelines, and what this meant. In Arm 1, we measured WTP to “trade up” and exchange standard fish for certified fish. In Arm 2, we measured WTA to “trade down” and exchange certified fish for the standard quality. We implemented the experiment one participant at a time, and made sure that participants could not observe others, or be observed by others, to avoid peer effects (Falk & Ichino, 2006) or conformity effects (Andreoni & Bernheim, 2009). Orthogonal to the endowment arms, we randomly varied the probability that subjects were permitted to trade their endowment for the other item—conditional on their bid in the auction (see below). We have the following design (Fig. 1).

¹⁰ Prior to the experiment, a list of certified producers was obtained from the government. Certified producers were contacted to collect information about types of fish produced, the different forms in which products are sold, main buyers, typical sizes sold, prices charged, and whether fish would be available for selling during the study.

¹¹ Obtaining uncertified fish from the local fish traders also helped to increase cooperation and to avoid creating the perception that our enumerators were competing with the traders.

	<i>Low probability of being allowed to trade (10%)</i>	<i>High probability of being allowed to trade (90%)</i>
<i>Subject received low value fish (Arm 1)</i>	Group 1: WTP-Low (N ₁ =111)	Group 2: WTP-High (N ₂ =89)
<i>Subject received certified fish (Arm 2)</i>	Group 3: WTA-Low (N ₃ =105)	Group 4: WTA-High (N ₄ =95)

Fig. 1 The factorial design of the framed field experiment

To probe the role of reference-dependent utility in fish purchasing, and the potential role of expectations in the formation of reference points, we implemented a 7-step protocol:

Step 1 (Introduction). Subjects receive their show-up fee and endowment, and information about the fish item. They are informed that they may be able to trade their fish endowment for another one. In Arm 1, subjects learn that they may be able to exchange their uncertified fish for certified fish (and what this meant). Similarly, subjects in Arm 2 learn that they may be able to trade their certified fish for uncertified fish.

Step 2 (Expectation manipulation). Subjects are randomly (and transparently) assigned to one of two treatments—with “low” or “high” probability of permission to exchange. A coin is flipped in front of the participant, with sides labelled “1” and “9”. The participant receives an index card with the resulting number on it, and is told that she can exchange her endowment for the other commodity if a 10-sided die (with numbers ranging between 0 and 9 on each side) to be rolled after the session would come up *lower* than the number on the index card. Hence, a participant whose coin came up “1” had a 10% probability of permission to exchange and a participant whose coin came up “9” had a 90% probability of being able to exchange.¹² This was clearly explained and practiced. This approach introduces exogenous variation in expectations; subjects throwing a “1” most likely expect to go home with their endowment, and subjects throwing a “9” probably do not.

Step 3 (Survey 1). Participants answer a few demographic questions.¹³ The purpose is to allow time for reference points to form in response to an individual’s plans regarding whether to exchange fish if given the opportunity to do so.

¹² In order to ensure full understanding by participants about the idea of chance, we used blue and orange balls to explain the chance of success and failure, respectively. Specifically, the 10% chance was explained by showing a combination of one blue ball and nine orange balls, and the 90% chance was explained by showing a combination of nine blue balls and one orange ball.

¹³ The questions focused only on demographic characteristics to avoid priming the respondent. Enumerators were strictly advised not to ask any additional questions at this stage. The questions included age and main source of livelihood of the respondent; household size and number of resident household members under five years of age; and highest level of education.

Step 4 (Practice and instructions). All subjects participate in a trial BDM auction, which was clearly explained with trial runs to reduce the risk of game form recognition failure (Cason & Plott, 2014). The practice round was conducted with two different types of bars of soap. The literature recommends to conduct practice rounds with products that are different from the final product being auctioned. The practice round was hypothetical—bars of soap were used for demonstration purposes only and participants did not walk home with any bar of soap. This was clearly explained at the start of the practice round. Participants were also allowed to hold and examine the 10-sided dice. To ensure that participants fully understood the instructions, we asked a few control questions.¹⁴ We continued to the next step only after the participant answered all control questions correctly, otherwise the instructions were repeated.

Step 5 (Valuation). As is well-known, in a BDM auction subjects state their bid which is compared to an unknown strike price. If WTP exceeds the strike price, the subject obtains the item and pays the strike price. BDM auctions are incentive-compatible and reveal true preferences if subjects maximize expected utility. The strike price was revealed by opening a sealed envelope, which contained a randomly drawn number from a uniform price distribution (ranging from 0 to 400 Naira, in steps of 25 Naira). This price range was announced to subjects. Since the market price of uncertified fish is approximately 500 Naira, we adopt an upper bound for the premium value of certified fish of 80%. Using a multiple price list format, also ranging from 0 to 400 Naira, participants in Arm 1 stated their WTP to exchange their uncertified fish for certified fish. This bid was compared with the strike price. Similarly, using a multiple price list format, participants in Arm 2 stated their WTA to exchange their certified fish for uncertified fish and their minimum bid (or offer) was compared to a random strike price between 0 and 400 Naira. Before bidding, all participants were reminded that effectuating the exchange would depend on the roll of the ten-sided die as well as the bid level relative to the strike price.

Step 6 (Survey 2). Participants fill out a second short survey including questions about consumption and expenditures, and food safety knowledge.

Step 7 (Implementation). The die is rolled and, depending on the outcome (and bidding or offering behavior), the trade is effectuated—fish is exchanged and corresponding payments are made. None of the subjects renege and changed their minds.

To mitigate potential “house money” effects arising from the unexpected receipt of money (Canavari et al., 2019; List & Price, 2016), we reminded the subjects that they could use the participation fee any way they wanted.¹⁵ Some 95% of the

¹⁴ These included questions such as “Who will you be competing against in this auction?”, “What does this combination of blue and orange balls mean?”, “How will we determine whether or not you actually are able to exchange your fish for another fish?”, and “How will we determine the amount of money to be paid to exchange your fish for another fish?”.

¹⁵ House money effects imply participants spend part of their endowment in the experiment since they do not consider this their own money, or because they want to reciprocate to the experimenter (Canavari et al., 2019). House money effects are also attenuated because respondents participated in extensive instructions settings and filled out a survey before participating in the auction, causing them to feel that they earned their endowment.

participants did not open the envelope containing the participation fee; instead, they used their own money in the experiment. To mitigate concerns about contamination due to social learning and participants “gaming” the experiment, we used 10 enumerators to keep the duration of the study as short as possible, and changed locations within the market.

5 Empirical strategy and data

For our empirical strategy, we exploit both experimental margins: variation in endowments and variation in expectations. To test whether endowments matter for the formation of reference points we analyze whether endowments affect bidding behavior. We compare average WTP for trading up in Arm 1 (the WTP-Low and WTP-High groups) to average WTA for trading down in Arm 2 (WTA-Low and WTA-High groups), and estimate the following model:

$$y_{mi} = \alpha + \beta \text{Certify}_{mi} + \delta \mathbf{x}_{mi} + \mathbf{C}_m + \epsilon_{mi}. \quad (2)$$

In (2), y_i measures the natural log of the bid (or offer) of consumer i on market m . The variable Certify_{mi} denotes the dummy associated with Arm 2, equal to one if consumer i received certified fish, and zero otherwise. Vector \mathbf{x}_{mi} captures demographic characteristics: *sex*, *age*, *education*, *knowledge about food safety*, and two proxies capturing attitudes towards risk.¹⁶ Vector \mathbf{C}_m captures market fixed effects, and ϵ_{mi} is a random error term. Anchoring on your own endowment drives up WTA for participants in Arm 2 and drives down WTP for participants in Arm 1. We therefore expect $\beta > 0$ and test whether we can reject the hypothesis that $\beta = 0$. We also compare cumulative bid distributions under Arms 1 and 2 to check whether one bid distribution stochastically dominates the other.

To test whether expectations affect reference points we exploit variation in the probability of permission to trade. That is, we compare bids of respondents from the WTP-low and WTA-Low groups (1 and 3) to bids from the WTP-High and WTA-High groups (2 and 4). We identify the effect of expectations by regressing bidding behavior of participant i on a treatment dummy capturing whether this participant has a high probability of being able to trade (Trade_i). However, observe the following. If gain–loss utility matters, respondents expecting to keep their endowment

¹⁶ *Knowledge about food safety* is an index score of multiple questions about food safety. We created two dummies for attitudes towards risk. The first one captures risk awareness (*Risk1*), and is based on the response to the question: “Can you name some risks associated with eating unsafe fish?”. A value of 1 indicates the respondent could name such risks (e.g., heavy metal contamination, foodborne illnesses, food poisoning) and a 0 indicates either “don’t know” or “there are no risks”. The second question was about risk-avoiding behavior (*Risk2*), and based on answers to the question: “Do you take any steps to protect yourself from unsafe fish?”. A value of 1 indicates the subject undertakes risk-mitigating activities (e.g., “know the vendor you buy fish from”, “ask vendor what precautions they take to ensure food safety”, “ask vendor about government certifications they have”) and a value of 0 for respondents engaging in no such activities. The correlation between these variables is very low ($\rho=0.04$), suggesting they capture different dimensions of attitudes towards risk.

should bid *less* in Arm 1 (as they anchor on uncertified fish) and ask *more* in Arm 2 (as they anchor on certified fish). Since lumping these effects together obfuscates results, we estimate a model that allows identification of the effects of expectations for these two groups separately:

$$y_{mi} = \alpha + \beta \text{Certify}_{mi} + \gamma \text{Trade}_{mi} + \theta \text{Trade}_{mi} \text{Certify}_{mi} + 2\delta x_{mi} + C_m + \varepsilon_{mi}. \quad (3)$$

In (3), parameter β (again) captures the effect of endowments, γ captures the effect of expectations for subjects from Arm 1, and $\gamma + \theta$ captures the effect of expectations for subjects from Arm 2. As before, we expect $\beta > 0$. We also expect $\gamma > 0$ as subjects expecting to trade are less likely to anchor on their endowment of uncertified fish, and therefore are willing to pay more for an upgrade. Finally, we expect $\theta < 0$, reflecting that subjects with certified fish who expect to trade are less likely to anchor on their endowment of certified fish, and hence are willing to accept less for a downgrade.

Comparing respondents across arms reveals that they are similar in terms of observables and stated preferences. Table 1 demonstrates that random assignment to the trade treatment within the arms also succeeded in generating comparable groups. This is tested formally through an F -test of joint orthogonality using a logit regression, which tests whether the observable characteristics in Table 1 are jointly unrelated to treatment status. We cannot reject this null hypothesis (p -value = 0.927 for Arm 1 and p -value = 0.443 for Arm 2), suggesting that randomization succeeded in achieving balance. Balance is further supported by the analysis of the standardized difference in means in columns (3) and (6) (Canavari et al., 2019).

Some 80% of our respondents are female, and the average age is 38 years. Nearly 90% of the respondents has completed at least primary level education and 40% completed secondary education. This reflects the urban nature of our sample. Many subjects are implementing measures to protect themselves. Some 82% of participants in Arm 1 and 84% in Arm 2 were aware of risks associated with eating unsafe fish (*Risk1*). In addition, 98% of study participants in Arm 1 and 93% in Arm 2 responded they were protecting themselves against consumption of unsafe fish (*Risk2*). There was no significant difference in knowledge between groups in Arm 1 and Arm 2, but a t -test showed that consumers who completed primary or secondary education had greater knowledge about food safety than those who did not (p -values < 0.05).¹⁷

Towards the bottom of the table we introduce two additional variables, *Concern about food safety* and *Trust in government inspectors* of food safety, that will be used in a heterogeneity analysis below. *Concerns about food safety* is a dummy variable equal to 1 if the respondent indicates that the government should run programs for fish farmers, traders, and vendors to educate them on how to keep fish products safe

¹⁷ We asked about reasons why fish can be unsafe to eat; the risks associated with eating unsafe fish; ways to protect themselves from eating contaminated fish; and whether they knew approaches used by farmers, traders, and the government to ensure production and consumption of safe fish products. Knowledge levels were computed as the sum of all correct answers.

Table 1 Balance tests and summary statistics

Variable	Probability of being able to exchange					
	Arm 1 (WTP)			Arm 2 (WTA)		
	(1) Low prob. (0.1)	(2) High prob. (0.9)	(3) Std diff	(4) Low prob. (0.1)	(5) High prob. (0.9)	(6) Std diff
Age	38.82 (12.75)	38.52 (11.49)	0.02	36.80 (9.86)	37.44 (10.52)	0.06
Sex	0.89 (0.32)	0.87 (0.33)	0.06	0.74 (0.44)	0.65 (0.48)	0.20
Primary education	0.95 (0.21)	0.95 (0.21)	0.00	0.89 (0.32)	0.96 (0.20)	0.27
Secondary education	0.40 (0.49)	0.38 (0.49)	0.04	0.41 (0.49)	0.56 (0.50)	0.31
Knowledge about food safety	8.34 (3.40)	7.83 (3.23)	0.15	6.77 (2.17)	6.72 (1.62)	0.03
Risk1	0.82 (0.38)	0.80 (0.40)	0.05	0.84 (0.37)	0.85 (0.36)	0.04
Risk2	0.99 (0.10)	0.97 (0.18)	0.17	0.93 (0.25)	0.94 (0.25)	0.01
Concern about food safety	0.06 (0.25)	0.09 (0.29)	0.10	0.14 (0.35)	0.16 (0.37)	0.05
Trust in government inspectors	0.36 (0.48)	0.32 (0.47)	0.08	0.23 (0.42)	0.29 (0.45)	0.13
Observations	195			199		
Joint orthogonal test (<i>p</i> -value)	0.927			0.443		

Standard deviations appear in parentheses. The *p*-value for the joint orthogonality test is obtained from a logit regression of the treatment variable on the covariates. Std diff means standardized difference in means. Bold figures show that the standardized difference in means is above the threshold of 0.25

Table 2 Summary of bids

	Low probability of being allowed to trade (10%)	High probability of being allowed to trade (90%)	t-test (p-value)	Mann–Whitney test (p-value)
Subject received low value fish (Arm 1)	185.34 (185.34)	188.88 (142.79)	0.854	0.962
Subject received certified fish (Arm 2)	270.71 (143.51)	263.56 (139.53)	0.725	0.743
t-test (p-value)	0.000	0.000		
Mann–Whitney test (p-value)	0.000	0.001		

Standard deviations appear in parentheses

Table 3 Endowments, expectations and bidding behavior

Variable	Dependent variable: natural log of consumer bids						
	(1)	(2)	(3)	(4)	(5)	(6)	(7)
<i>Certify</i>	0.90*** (0.15)	0.95*** (0.15)	1.01*** (0.20)	0.999*** (0.259)	1.07*** (0.21)	1.15*** (0.22)	1.15*** (0.22)
<i>Trade</i>	–	–	–	0.403 (0.259)	0.42* (0.24)	0.44* (0.19)	0.44** (0.19)
<i>Certify x Trade</i>	–	–	–	–0.430 (0.288)	–0.39 (0.27)	–0.46* (0.27)	–0.46* (0.27)
Market fixed effects	Yes	Yes	Yes	No	Yes	Yes	Yes
Additional controls	No	Yes	Yes	No	No	Yes	Yes
Constant	4.37*** (0.17)	3.79*** (0.54)	3.70*** (0.57)	4.331*** (0.202)	4.18*** (0.22)	3.56*** (0.55)	3.56*** (0.54)
R-squared	0.17	0.21	0.06	0.080	0.18	0.22	0.07
Observations	394	394	394	394	394	394	394

Columns (1), (2), (4), (5), and (6) are OLS regression estimates. Columns (3) and (7) are Tobit regression estimates. Robust standard errors are reported in parentheses. Additional controls include sex, age, and education of the respondent, a proxy of knowledge about food safety of the respondent, a dummy variable capturing the perceived risks associated with eating unsafe fish, and a dummy variable capturing the measures implemented by the respondent to protect themselves from unsafe fish. *** $p < 0.01$, ** $p < 0.05$, * $p < 0.10$

and clean, and 0 if otherwise. A minority of respondents considered this a useful proposition. The variable *Trust in government inspectors* is also a dummy variable. Respondents were asked to indicate on a scale of 1 (no trust at all) to 10 (complete trust), the extent to which they trusted government inspectors of food safety. Overall, trust is low, with only about one-third of the respondents indicating they trust the government inspectors to do their job. Using these data, we construct a dummy variable equal to 1 if the score is less than 5 and 0 if otherwise. Again, we document balance across experimental groups.

Table 4 Determinants of offers for subpopulations (WTA bids < = 100 Naira and WTA = 400)

Variable	WTA = 400 Naira		WTA ≤ 100 Naira	
	Coefficient (1)	Marginal effect (2)	Coefficient (3)	Marginal effect (4)
Respondent is female	-0.011 (0.335)	-0.003 (0.077)	0.237 (0.393)	0.041 (0.067)
Age of the respondent	-0.022 (0.015)	-0.005 (0.003)	0.055*** (0.018)	0.009*** (0.003)
Primary education	-0.886** (0.385)	-0.203** (0.084)	0.223 (0.449)	0.038 (0.077)
Knowledge score	0.164 (0.190)	0.037 (0.043)	-0.162 (0.214)	-0.028 (0.037)
Aware about food safety issues in fish	-0.214 (0.528)	-0.049 (0.120)	0.410 (0.594)	0.071 (0.102)
Trust in government's role in addressing food safety issues	-0.233 (0.358)	-0.053 (0.082)	-0.256 (0.411)	-0.044 (0.070)
Concern about food safety issues in fish	-0.468 (0.450)	-0.107 (0.102)	0.101 (0.552)	0.017 (0.095)
Perceives risks associated with eating unsafe fish (Risk1)	-0.143 (0.458)	-0.033 (0.105)	0.671 (0.550)	0.115 (0.094)
Consumer is protecting himself/herself from unsafe fish (Risk2)	1.460* (0.872)	0.334* (0.195)	-1.678** (0.707)	-0.288** (0.115)
Group 3 dummy (WTA-Low)	0.006 (0.301)	0.001 (0.069)	0.019 (0.350)	0.003 (0.060)
Constant	0.102 (1.186)	-	-2.540** (1.208)	-
Observations	199		199	

Logistic regression estimates. Dependent variable in columns (1) and (2) is a dummy equal to one if willingness to accept bid is equal to 400 Naira, and zero if otherwise. Dependent variable in columns (3) and (4) is a dummy equal to one if willingness to accept bid is less than or equal to 100 Naira, and zero if otherwise. *** $p < 0.01$, ** $p < 0.05$, * $p < 0.1$

Table 5 Endowments, expectations and bidding behavior (heterogeneity analysis)

Variable	(1) Z = Primary education	(2) Z = Secondary education	(3) Z = Concern about food safety	(4) Z = Trust in gov. inspectors
Certify	1.68* (1.01)	1.04*** (0.28)	1.22*** (0.23)	1.01*** (0.25)
Trade	1.83* (1.03)	0.55* (0.31)	0.44* (0.25)	0.44* (0.27)
Certify x Trade	-1.63 (1.07)	-0.50 (0.35)	-0.46 (0.29)	-0.50 (0.31)
Z	0.81 (1.00)	0.02 (0.36)	0.84** (0.33)	-0.36 (0.40)
Z x Certify	-0.55 (1.04)	0.28 (0.40)	-0.85** (0.39)	0.44 (0.44)
Z x Trade	-1.46 (1.05)	-0.31 (0.48)	-0.34 (0.47)	-0.09 (0.54)
Z x Certify x Trade	1.24 (1.11)	0.14 (0.54)	0.49 (0.56)	0.27 (0.61)
Market F.E	Yes	Yes	Yes	Yes
Controls	Yes	Yes	Yes	Yes
Constant	3.67*** (1.03)	4.41*** (0.41)	4.23*** (0.45)	4.43*** (0.49)
R-squared	0.22	0.22	0.22	0.23
Observations	394	394	394	394

OLS regression estimates. Market F.E. means market fixed effects. Additional controls include sex, age, a proxy of knowledge about food safety of the respondent, a dummy variable capturing the perceived risks associated with eating unsafe fish, and a dummy variable capturing the measures implemented by the respondent to protect themselves from unsafe fish. Robust standard errors are reported in parentheses.

*** $p < 0.01$, ** $p < 0.05$, * $p < 0.1$

6 Results

We summarize our bid and offer data in Table 2, for the four experimental groups separately. We also report the outcomes of t -tests and non-parametric Mann–Whitney tests to indicate whether bidding behavior differs across cells. A first glance reveals that average WTA is significantly greater than average WTP, regardless of whether the probability to trade is high or low (Tables 3, 4, 5). In contrast, bidding behavior in neither the WTA or WTP arm seems to systematically vary with the probability of trade. In Appendix Table 6 we provide results broken down per local administrative unit, which reveals some spatial differences in bidding behavior. We therefore turn to a regression framework, where we can control for market effects and respondent characteristics.

Table 6 Summary of bids and offers, by local administrative unit

Ikorodu				Ojo			
	10%	(90%)	<i>p</i> -value		10%	(90%)	<i>p</i> -value
Subject received low value fish (Arm 1)	222.73 (124.10)	269.20 (222.73)	0.076	Subject received low value fish (Arm 1)	102.40 (93.84)	147.09 (116.14)	0.045
Subject received certified fish (Arm 2)	347.92 (108.83)	323.33 (117.82)	0.519	Subject received certified fish (Arm 2)	207.50 (117.57)	178.75 (104.90)	0.420
<i>p</i> -value	0.008	0.009		<i>p</i> -value	0.008	0.065	

Standard deviations appear in parentheses

6.1 Endowments and formation of reference points

We first examine whether consumers anchor on their random endowment by comparing WTP for trading-up in Arm 1 with WTA for trading-down in Arm 2. If participants use their endowment as a reference point for a possible gain–loss utility term, reference-dependence pushes up WTA and pushes down WTP. The results are consistent with this prediction. From the top row of columns (1–7) in Table 3, subjects endowed with certified fish on average require greater compensation to part with their endowment than subjects endowed with uncertified fish are willing to pay. This finding is robust across specifications. We report results with and without subject controls, and include market fixed effects in all models except in model (4).

To place the regression results in perspective, we now turn to an unconditional comparison of sample means. Average WTA equals 267 Naira and average WTP equals 187. This tells us two important things. First, WTA is 43% higher than WTP, which is a gap that is not only statistically but also economically significant.¹⁸ Second, average willingness to pay a premium for food safety certified fish is large. The WTP estimate serves as a lower bound of the true value for our sample (possibly attenuated by reference-dependence) and the WTA estimate is an upper bound (accentuated by reference dependence). Since conventional fish costs about 500 Naira per 500 g, we find that the premium is somewhere between 37 and 53% of the value of the uncertified commodity. This reflects that some (well-known) health hazards due to consumption of unsafe fish are perceived as large.

Figure 2 plots the cumulative density functions of WTP and WTA bids, for all possible values of the strike price. The *p*-value for the Wilcoxon rank-sum test, at <0.001, provides strong confirmation of differences in bid distributions.

¹⁸ The standardized mean difference equals 0.58, which exceeds the common threshold of 0.25 for “substantial effects” (Cochran and Rubin 1973). Similar outcomes are found when we compare WTP and WTA distinguishing between the two treatment arms.

Surprisingly, about 40 percent of participants in Arm 2 had a WTA bid equal to the maximum strike price of 400 Naira. These consumers were unwilling to trade-down for any strike price in the 0–400 Naira range. The desire to “try out” this novel product was quite strong, confirming that food safety is a relevant topic for our respondents. Bids in the actual experiment were higher than bids during the pilot (we used the pilot to define a range of bid values, aiming to have the great majority of bids within the range). We speculate this is due to the widely-publicized food safety incident that occurred between the pilot and experiment, mentioned above.¹⁹ We account for censored data by estimating Tobit models instead of OLS (columns 3 and 7), but this does not solve the problem if bidding at the upper range is caused by a lack of comprehension (failure to recognize the game form). If bids at the upper bound are “mistakes” then they should perhaps be lower without mistakes, whereas the censored technique assumes that the intended choice would have been even higher than the upper bound. We return to the issue of comprehension in Sect. 7.

In columns (1–2) of Table 4 we examine the determinants of bidding at the upper bound in the WTA arm in more detail. We created a dummy variable taking the value of one if the respondent indicated a WTA of 400 Naira, and see how this variable correlates with our respondent observables. Asking the maximum amount is more likely for risk averse respondents with limited education. The group 3 dummy (WTA-Low) does not enter significantly.

Returning to Fig. 2, it is clear that WTA does not stochastically dominate WTP—the CDFs “cross” at the bid level of 100 Naira. This is consistent with the “reverse endowment effect” of Banerji and Rampal (2020).²⁰ Our results support these earlier findings, but also extends them. Banerji and Rampal (2020) argue that “*possessing a lower quality good can increase one’s willingness to pay to exchange it for a novel and improved version of the same good. This is reasonable because possessing the lower quality good can make it salient for a subject that it is inferior compared to the novel and improved variety available.*” Instead, we find that some subjects endowed with the high-quality good are willing to accept extremely low amounts to trade it in. We speculate that these respondents outright reject the new product. One possible explanation may be cognitive dissonance if subjects reject the idea that they routinely consume unsafe food. For WTA to fall below WTP, subjects should have preferences over their beliefs with respect to food safety and be able to control their beliefs by selecting sources of information likely to confirm their “desired” beliefs (Akerlof & Dickens, 1982). Moreover, being endowed with an item should increase the salience of information that may potentially challenge these beliefs. In Appendix A we provide cumulative density functions of WTA and WTP for the 4 individual groups, enabling pairwise comparisons.

¹⁹ Bohm et al. (1997) study upper-bound effects in BDM mechanisms, and demonstrate that increasing upper bounds tends to increase WTA bids (asks). It is an open question to what extent a higher upper bound would have resulted in higher bids in our study.

²⁰ Banerji and Rampal (2020) compute the premium value of biofortified high-iron millet by using two experiments: (i) “full-bidding” for low- versus high quality millet and (ii) “endow-and-upgrade”, where subjects express their WTP for a quality upgrade conditional on owning the low quality. According to reference-dependent utility theory, the endow-and-upgrade approach should produce a smaller premium because subjects anchor on the variety they own. However, the reverse is true.

Columns (3–4) of Table 4 explore the correlates of these extremely low WTA offers. We construct a dummy variable indicating whether the respondent asks for a compensation level of 100 Naira, or less, and regress this dummy on our subject characteristics. We find that the probability of extending such low bid is positively correlated with age (which may be consistent with the cognitive dissonance hypothesis, as older people have eaten unsafe fish for a longer period) and negatively correlated with our measure of risk aversion. The minority of respondents that takes no measures to protect itself from consuming unsafe fish is more likely to demand very little compensation for downgrading from certified to uncertified fish. This seems consistent. Again, we do not find that the probability of trading affects WTA.

6.2 Expectations and formation of reference points

We now turn to the role of expectations and reference point formation, presented in columns (4–7) of Table 3. As in Table 2, we find no evidence that expectations have a significant effect on WTP if market fixed effects are not included (column 4). If we introduce market fixed effects, a marginally significant effect materializes. However, empirical support for the hypothesis that expectations matter for reference point formation is not only weak, but also mixed. Expectations might matter for reference point formation and economic values in some contexts—but not in others. This follows from columns (5–7).

First consider the effect of expectations for subjects in Arm 1, who make bids to “trade up”. The *Trade* variable enters marginally significantly for this subsample. Our estimates are consistent with the idea that being allowed to trade implies that expectations about future ownership are weaker, which increases WTP to trade the endowment in for something else. Hence, $\gamma > 0$, as predicted. This finding is consistent with, for example, Ericson and Fuster (2014) and Banerji and Gupta (2014).

However, there is no evidence that expectations affect WTA to trade down. It is clear from columns (4–7) in Table 3 that $\gamma + \theta \approx 0$. This is confirmed by panel c in Fig. 3 in the Appendix,²¹ which plots the cumulative density functions for the two WTA groups (with high and low probability of trade) and also by a robustness analysis reported in Appendix Table 7, where we split the sample and analyze the bidding behavior of subjects from Arm 1 and Arm 2 separately. While the *Trade* variable is marginally significant for subjects from Arm 1 (large effect, and of the expected sign), we obtain a precisely estimated null result for subjects from Arm 2.²² This finding is consistent with, for example, Heffetz and List (2014) and Gneezy

²¹ Something else can be learned from Figure A1. While it seems that valuations for uncertified fish have shifted over time (perhaps because of the food safety incident), they did not shift so much that the willingness-to-pay (WTP) data was also censored. The cleanest evidence that not much is lost by the censoring of WTA data comes from the comparison between groups 3 and 4 in Fig. 3. There may be a difference in the two CDFs in the figure, but there is not much to suggest a notable difference was obscured by the censoring. Even if it was, the result that expectations matter for WTP remains.

²² A Mann–Whitney/Wilcoxon test for equality of distributions of WTA between the two treatment arms fails to reject the null hypothesis of equal distributions ($p=0.742$). But a Mann–Whitney/Wilcoxon test for equality of WTP distributions rejects the null hypothesis of equal distributions ($p=0.032$).

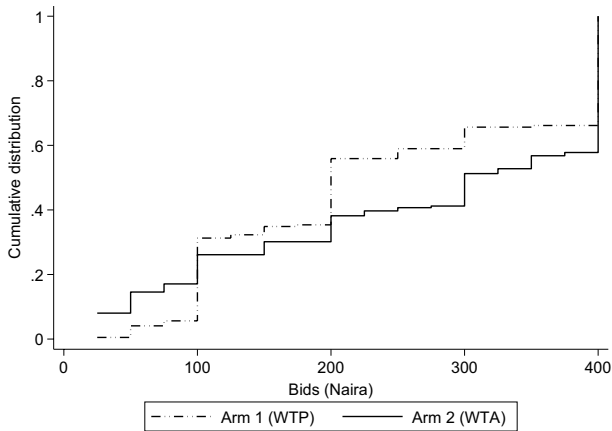


Fig. 2 Share of the population willing to trade at different prices

et al. (2017). Nevertheless, the finding that the coefficients are only marginally significant and only appear when conditioning for other variables and factors, we believe that support for the hypothesis that expectations matter for reference point formation is weaker than the support for the hypothesis that endowments matter for reference point formation. We also believe that the apparent asymmetry in bidding behavior is an interesting area for follow-up research.

7 Heterogeneity

In this section we probe the robustness of our main results for different subsamples of respondents. We cannot experimentally vary respondent type, so this section reports associations rather than causal effects. We are interested in exploring whether we obtain similar results for respondents with different levels of education, concerns about food safety, and trust in formal certification services (proxied by trust in government inspectors of food safety).

The issue of variation in education is perhaps most important, as this speaks to the question whether our findings are not driven by mistakes made by our subjects, or failure to recognize the game form (as argued by Cason & Plott, 2014). Obviously, we cannot know which responses are mistakes and which ones are proper reflections of underlying preferences.²³ While we tried to minimize the risk of mistakes by only allowing respondents to participate in the experiment after passing a comprehension test without error (even if this implied that the one-on-one instructions had to be repeated several times), it is evident that the task was challenging for some subjects. In particular, the high frequency of WTA offers that hit the upper

²³ This would require organizing a BDM with an item with an unambiguous *induced* value or preference (as done, for example, by Cason and Plott, 2014).

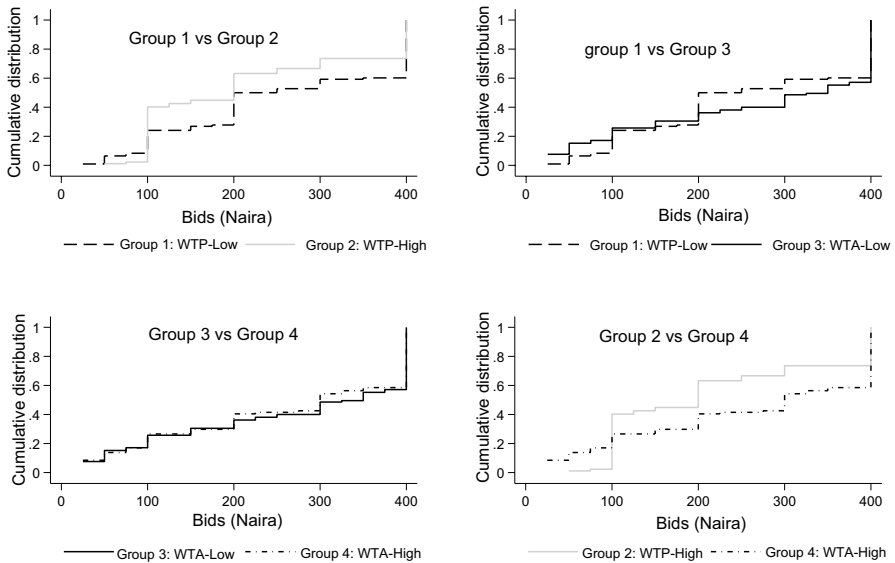


Fig. 3 Share of the population willing to trade at different prices, for each group

limit of the price range (400 Naira) is cause of concern. Our preferred explanation for the difference in bidding behavior between the pilot and actual experiment is a much-publicized food safety incident that happened during the interim, but it is necessary to explore whether other factors matter as well. This includes the possibility that subjects participating in the actual experiment on average have greater difficulty to recognize the game form than subjects participating in the pilot.

We consider the highest level of finished education as a proxy of comprehension. We introduce two dummy variables, Z : one for completed *Primary education* and one for completed *Secondary education*. We introduce this dummy in the main regression model, interact it with the experimental variables ($Z \times Certify$ and $Z \times Trade$) and also include a triple interaction term ($Z \times Certify \times Trade$). Results are reported in the first two columns of Table 5. Three results are noteworthy. First, the main results for *Certify* and *Trade* go through as before—the endowment effect exists and is very significant, but the expectations effect is only marginally significant. Second, the education variable itself does not enter significantly, so bidding behavior does not vary with education (controlling for income). Third, and most importantly, none of the interaction terms enters significantly—there is no evidence to suggest that the gap between WTA and WTP varies with education, or that the formation of reference points works differently for higher educated individuals.

We also find no evidence that the empirical results are significantly mediated by concerns about food safety or trust in government inspectors. The relevant interaction terms are never significant, and the main results are unaffected (in a qualitative sense). Moreover, for the model that includes *Concern about food safety* the interaction between *Certify* and *Trade* is (marginally) significant. Finally, and consistent with expectations, subjects who are more concerned about food safety are, on

Table 7 Splitting the sample: expectations and the value of fish

	Dependent variable: natural log of consumer WTA-bids		Dependent variable: natural log of consumer WTP-bids	
	(1)	(2)	(3)	(4)
<i>Trade</i>	0.01 (0.12)	0.02 (0.12)	0.42* (0.24)	0.45* (0.24)
Market fixed effects	Yes	Yes	Yes	Yes
Additional controls	No	Yes	No	Yes
Constant	5.72*** (0.10)	6.13*** (0.31)	3.62*** (0.24)	2.78*** (0.27)
<i>R</i> -squared	0.06	0.09	0.15	0.17
Observations	199	199	195	195

OLS regression estimates. Additional controls include sex, age, and education of the respondent, a proxy of knowledge about food safety of the respondent, a dummy variable capturing the perceived risks associated with eating unsafe fish, and a dummy variable capturing the measures implemented by the respondent to protect themselves from unsafe fish. Robust standard errors are reported in parentheses. The dependent variables are: in columns (1 and 2), log of WTA to downgrade from certified to uncertified fish in experiment 1; in column (3 and 4), log WTP to upgrade from uncertified for certified fish in experiment 2. Asterisks indicate the following: *** $p < 0.01$, ** $p < 0.05$, * $p < 0.1$.

average, bidding more for certified safe food. We interpret this as a sanity check of our data.

8 Conclusions

We examine reference-dependent utility and the formation of reference points in the field, working with consumers trading real food items in a real market setting. An important addition to the literature is that we study trading behavior in *asymmetric commodities*—one is novel and (weakly) superior for consumers in the context we study, and therefore more salient than the other. We consider food safety certified fish and conventional fish, and find that consumer demand for safe food is large among the respondents in our experiment. Our estimate of the premium for certified fish is bracketed by 37% and 53% of the value of the conventional fish item—boding well for the potential of certification as a market-mediated solution to transform food systems. The finding that people are willing to upgrade but not willing to down grade, when given a chance, suggests reduced likelihood of dis-adoption once consumers switch to safety certified food products and speaks to the stability of preferences for food safety certification. This finding seems to support the conclusion that certification for food safety is a promising welfare-enhancing intervention in developing countries (see, for example, Ortega et al., 2011; Birol et al., 2015; De Groot et al., 2016).

Average values hide systematic variation, consistent with reference dependent utility theory. Consistent with existing (lab) evidence, endowments matter for the construction of reference points. On average, willingness to accept for a downgrade is much higher than willingness to pay for an upgrade. However, we also find that some subjects reject the improved product and are willing to exchange for virtually any positive price. We speculate that this may be due to cognitive dissonance, and purposeful avoidance of information that might challenge desired beliefs about the safety of food that subjects routinely eat and prepare for their families. We therefore report evidence of both an endowment effect and a reverse endowment effect within the same experiment.

The literature is divided on the role of expectations as a determinant of reference points. Our evidence is also mixed and rather weak, but we tentatively document an asymmetry in bidding behavior across the two commodities. While expectations with respect to future ownership seem to matter for subjects “trading up” (a marginally significant effect), they are clearly unimportant for subjects who may “trade down”—selling the superior commodity in order to obtain the conventional one. These results are robust to the level of education (attenuating concerns about failure to recognize the game form), concern about food safety, or trust in government certification schemes. We conclude that other factors beyond probabilistic beliefs about future ownership influence valuations for such trades. The potential asymmetry between bidding behavior when trading up and down could be usefully explored further in follow-up research.

Supplementary Information The online version contains supplementary material available at <https://doi.org/10.1007/s10683-023-09809-7>.

Funding This work received funding from the CGIAR Research Programs (CRP) on Policies, Institutions, and Markets (PIM) led by IFPRI and on Fish Agri-food Systems (FISH). We thank two anonymous reviewers and the handling editor for helpful comments and suggestions.

Data availability The replication material for the study is available at <https://doi.org/10.7910/DVN/VKZTLD>

Declarations

Conflict of interest None.

Ethical approval Yes.

Informed consent All participants freely participated and filled out informed consent forms.

Open Access This article is licensed under a Creative Commons Attribution 4.0 International License, which permits use, sharing, adaptation, distribution and reproduction in any medium or format, as long as you give appropriate credit to the original author(s) and the source, provide a link to the Creative Commons licence, and indicate if changes were made. The images or other third party material in this article are included in the article’s Creative Commons licence, unless indicated otherwise in a credit line to the material. If material is not included in the article’s Creative Commons licence and your intended use is not permitted by statutory regulation or exceeds the permitted use, you will need to obtain permission directly from the copyright holder. To view a copy of this licence, visit <http://creativecommons.org/licenses/by/4.0/>.

References

- Abeler, J., Falk, A., Götte, L., & Huffman, D. (2011). Reference points and effort provision. *American Economic Review*, *101*, 470–492.
- Akerlof, G., & Dickens, W. (1982). The economic consequences of cognitive dissonance. *American Economic Review*, *72*(3), 307–319.
- Alphonse, R., & Alfnes, F. (2016). Consumer willingness to pay for food safety in Tanzania: An incentive-aligned conjoint analysis. *International Journal of Consumer Studies*, *36*, 394–400.
- Andreoni, J., & Bernheim, B. D. (2009). Social image and the 50–50 norm: A theoretical and experimental analysis of audience effects. *Econometrica*, *77*(5), 1607–1636.
- Banerji, A., & Gupta, N. (2014). Detection, identification, and estimation of loss aversion: Evidence from an auction experiment. *American Economic Journal: Microeconomics*, *6*(1), 91–133.
- Banerji, A., & Rampal, J. (2020). Reverse endowment effect for a new product. *American Journal of Agricultural Economics*, *102*(3), 786–805.
- Birol, E., Karandikar, B., Roy, D., & Torero, M. (2015). Information, certification and demand for food safety: Evidence from an in-store experiment in Mumbai. *Journal of Agricultural Economics*, *66*(2), 470–491.
- Bohm, P., Linden, J., & Sonnegard, J. (1997). Eliciting reservation prices: Becker-DeGroot-Marchak mechanisms vs markets. *The Economic Journal*, *107*(July), 1079–1989.
- Bulte, E., List, J. and van Soest, D. (2020). Toward an understanding of the welfare effects of nudges: evidence from a field experiment in Uganda. *The Economic Journal*, 1–25.
- Bush, S., Belton, B., Hall, D., Vandergeest, P., Murray, F., Ponte, S., Oosterveer, P., Islam, M., Mol, A., Hatanaka, M., Kruijssen, T., Little, D., & Kusumawati, R. (2013). Certify sustainable aquaculture? *Science*, *341*(6150), 1067–1068.
- Canavari, M., Drichoutis, A. C., Lusk, J. L., & Nayga, R. M., Jr. (2019). How to run an experimental auction: A review of recent advances. *European Review of Agricultural Economics*, *46*(5), 862–922.
- Caputo, V., Lusk, J. L., & Nayga, R. M. (2020). Am I getting a good deal? Reference-dependent decision making when the reference price is uncertain. *American Journal of Agricultural Economics*, *102*(1), 132–153.
- Cason, T., & Plott, C. (2014). Misconceptions and game form recognition: Challenges to theories of revealed preference and framing. *Journal of Political Economy*, *122*(6), 1235–1270.
- Cerulli-Harms, A., Goette, L., & Sprenger, C. (2019). Randomizing endowments: An experimental study of rational expectations and reference-dependent preferences. *American Economic Journal: Microeconomics*, *11*(1), 185–207.
- Cochran, W., & Rubin, D. (1973). Controlling bias in observational studies: a review. *Sankhya: the Indian Journal of Statistics, Series A*, *35*(4), 417–446.
- Crawford, V., & Meng, J. (2011). New York city cabdrivers' labor supply revisited: Reference-dependence preferences with rational expectations targets for hours and income. *American Economic Review*, *101*(5), 1912–1932.
- De Groot, H., Narrod, C., Kimenju, S., Bett, C., Scott, R., Tiongco, M., & Gitonga, Z. (2016). Measuring rural consumers' willingness to pay for quality labels using experimental auctions: The case of aflatoxin-free maize in Kenya. *Agricultural Economics*, *47*, 33–45.
- Dreyfuss, B., Heffetz, O., & Rabin, M. (2022). Expectations-based loss aversion may help explain seemingly dominated choices in strategy-proof mechanisms. *American Economic Journal: Microeconomics*, *14*(4), 515–555.
- Dupas, P. (2014). Short-run subsidies and long-run adoption of new health products: Evidence from a field experiment. *Econometrica*, *82*(1), 197–228.
- Ericsson, K., & Fuster, A. (2011). Expectations as endowments: Evidence on reference-dependent preferences from exchange and valuation experiments. *Quarterly Journal of Economics*, *126*(4), 1879–1907.
- Ericsson, K., & Fuster, A. (2014). The endowment effect. *Annual Review of Economics*, *6*, 555–579.
- Falk, A., & Ichino, A. (2006). Clean evidence on peer effects. *Journal of Labor Economics*, *24*(1), 39–57.
- Gill, D., & Proxse, V. (2012). A structural analysis of disappointment aversion in a real effort competition. *American Economic Review*, *102*(1), 469–503.
- Gneezy, U., Goette, L., Sprenger, C., & Zimmermann, F. (2017). The limits of expectations-based reference dependence. *Journal of the European Economic Association*, *15*(4), 861–876.
- Heffetz, O., & List, J. (2014). Is the endowment effect an expectations effect? *Journal of the European Economic Association*, *12*(5), 1396–1422.

- Hoffmann, V., Moser, C., & Herrman, T. (2021). Demand for aflatoxin-safe maize in Kenya: Dynamic response to price and advertising. *American Journal of Agricultural Economics*, 103(1), 275–295. <https://doi.org/10.1111/ajae.12093>
- Hoffmann, V., Moser, C., & Saak, A. (2019). Food safety in low and middle-income countries: The evidence through an economic lens. *World Development*, 123, 104611.
- Ifft, J., Roland-Holst, D., & Zilberman, D. (2012). Consumer valuation of safety-labelled free-range chicken: Results of a field experiment in Hanoi. *Agricultural Economics*, 43, 1–14.
- Karle, H., Kirchsteiner, G., & Peitz, M. (2015). Loss aversion and consumption choice: Theory and experimental evidence. *American Economic Journal: Microeconomics*, 7(2), 101–120.
- Knetsch, J. (1989). The endowment effect and evidence of nonreversible indifference curves. *American Economic Review*, 79(5), 1277–1284.
- Kőszegi, B., & Rabin, M. (2006). A model of reference-dependent preferences. *Quarterly Journal of Economics*, 121(4), 1133–1165.
- Lagerkvist, C., Hess, S., Okello, J., & Karanja, N. (2013). Consumer willingness to pay for safer vegetables in urban markets of a developing country: The case of Kale in Nairobi. *Kenya. the Journal of Development Studies*, 49(3), 365–382.
- Lagerkvist, C., & Okello, J. J. (2016). Using the integrative model of behavioural prediction and censored quantile regression to explain consumers' revealed preferences for food safety: Evidence from a field experiment in Kenya. *Food Quality and Preference*, 49, 75–86.
- List, J., & Price, M. (2016). The use of field experiments in environmental and resource economics. *Review of Environmental Economics and Policy*, 10(2), 206–225.
- Lusk, J., Feldkamp, T., & Schroeder, T. (2004). Experimental auction procedure: Impact on valuation of quality-differentiated products. *American Journal of Agricultural Economics*, 86, 389–405.
- Olatoye, I. O., & Basiru, A. (2013). Antibiotic usage and oxytetracycline residue in African Catfish (*Clarias gariepinus* in Ibadan, Nigeria). *World Journal of Fish and Marine Sciences*, 5, 302–309.
- Ortega, D., Wang, H., Olynk, N., Wu, L., & Bai, J. (2011). Chinese consumers' demand for food safety attributes: A push for government and industry regulations. *American Journal of Agricultural Economics*, 94(2), 489–495.
- Otieno, D., & Nyikal, R. (2017). Analysis of consumer preferences for quality and safety attributes in artisanal fruit juices in Kenya. *Journal of Food Products Marketing*, 23(7), 817–834.
- Owusu-Sekyere, E., Owusu, V., & Jordaan, H. (2014). Consumer preferences and willingness to pay beef food safety assurance labels in the Kumasi metropolis and Sunyani Municipality of Ghana. *Food Control*, 46, 152–159.
- Pope, D., & Schweitzer, M. (2011). Is Tiger Woods loss averse? Persistent bias in the face of experience, competition, and high stakes. *American Economic Review*, 101, 129–157.
- Simonsohn, U., & Loewenstein, G. (2006). Mistake #37: The effect of previously encountered prices on current housing demand. *Economic Journal*, 116(508), 175–199.
- Smith, A. (2019). Lagged beliefs and reference-dependent utility. *Journal of Economic Behavior and Organization*, 167, 331–340.
- Thaler, R. (1980). Toward a positive theory of consumer choice. *Journal of Economic Behavior and Organization*, 1(1), 39–60.
- Tran, N., Bailey, C., Wilson, N., & Phillips, M. (2013). Governance of global value chains 845 in response to food safety and certification standards: the case of shrimp 846 from Vietnam. *World Development*, 45, 325–336.
- Tversky, A., & Kahneman, D. (1991). Loss aversion in riskless choice: A reference-dependent model. *Quarterly Journal of Economics*, 106, 1039–1061.
- Wenner, L.W., 2015. Expected prices as reference points—theory and experiments. *European Economic Review*, 75, 60–79.
- World Health Organization. (2015). WHO estimates of the global burden of foodborne diseases: foodborne disease burden epidemiology reference group 2007–2015.
- WorldFish, 2018. WorldFish Nigeria Strategy: 2018–2022. Penang, Malaysia: WorldFish. Strategy: 2018-09.

Publisher's Note Springer Nature remains neutral with regard to jurisdictional claims in published maps and institutional affiliations.