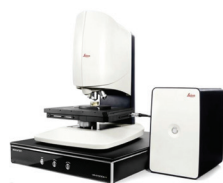


## ProductNews

### 3D Optical Surface Metrology System Leica DCM8



The Leica DCM8 employs innovative HD microdisplay scanning technology. With no moving parts in the sensor head, fast and reproducible data capture is guaranteed. The integrated HD CCD camera has a large field of view, allowing more of your sample surface to be analyzed at once. To obtain a seamless, precise model of an even larger surface area, simply select the ultra-fast XYtopography stitching mode.

Leica Microsystems  
www.leica-microsystems.com/products/confocal-microscopes/p/leica-dcm8

### Full-Spectrum Imaging Camera Captures Ultra-High Definition Images



The SceneScope® RUVIS 29MP is a 29 megapixel ultra-high definition camera with 6644×4452 pixel resolution and a full-frame CCD chip. It can photograph and process images in shortwave UV through the visible light and into the infrared. It has the capture capabilities of three cameras in one high-resolution 29 MP device. The software offers three user-definable operating modes: Search (RUVIS, VIS, IR), Focus (zoom in and out) and Capture of high-resolution images.

HORIBA Scientific  
http://HORIBA.com/scientific

### Pixelink® Adds 20 MP Ultra-High Definition/High QE Camera Models



Pixelink announced the release of their 20 MP ultra-high resolution and high quantum efficiency USB 3.0 camera models incorporating the Sony IMX183 CMOS rolling shutter sensor. Pixelink has also developed a microscopy camera model with the IMX183 sensor technology, the M20-CYL, which rivals the performance of many sCMOS cameras and is available at a fraction

of the price. These models are compatible with Pixelink Capture, a free, real-time, interactive, multi-camera software application.

Navitar Vision Technology Companies  
www.navitar.com

### Cameca Eikos-UV™: the Workhorse Atom Probe Microscope

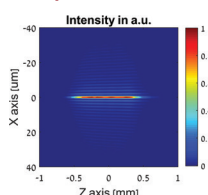


EIKOS-UV is available in two configurations. The first is the base EIKOS system, which incorporates a reflectron spectrometer design to provide excellent mass resolving power and signal to noise. The second is the fully configured EIKOS-UV system, which adds an integrated, automated

laser pulsing module with computer-controlled focused spot design to provide access to a larger application range and even higher signal to noise. The base EIKOS system is field upgradable to the EIKOS-UV.

CAMECA is a business unit of the Materials Analysis Division of AMETEK® Inc.  
www.ametek.com

### DeepCleave™ Product Description



Label-free flow cytometry using non-linear optical effects is a potentially useful technique for the identification of cells of interest to be used in *in vivo* applications. Holo/Or has developed the DeepCleave™ module, capable of focusing a laser beam to <2 μm over a range of >600 μm (in air) with excellent power uniformity along the focus axis. By combining this element with a scanning axis, it is possible to create high-intensity light sheets to sample flow channel with any desired width.

Holo/Or Ltd.  
www.holor.com

### JAI Adds Microscopy Cameras Offering Enhanced Suppression of Dust/FODs



JAI announced the availability of four new 3-CMOS prism color cameras designed for use in microscopy-based systems where maximum control of dust, lint, and other foreign object

debris particles (FODs) in the optical path is critical. The new Apex Series AP-3200T-USB-LSX is a 3.2-megapixel, 38.3 fps camera featuring three prism-mounted Sony IMX265 CMOS imagers. The AP-1600T-USB-LSX is a 1.6-megapixel camera with three IMX273 CMOS imagers and a full-resolution frame rate of 79 fps.

JAI Inc.  
www.jai.com

### New Compact SWIR InGaAs Camera with Improved Cooling Down to -50°C



Photonic Science's new, compact SWIR InGaAs camera with cooling down to -50°C allows long exposures for semiconductor failure analysis and small animal imaging applications. The camera incorporates a 640 × 512 VGA high-grade sensor, 15-micron pixels, and quantum efficiency response >70% at the silicon emission peak and >80% at 1550 nm. The GEV-compliant

interface allows either native uncorrected or corrected data using a Windows-based or Linux-based SDK.

Photonic Science & Engineering Limited  
www.photonicscience.com

### Digital Microscope Cracks the Challenge of Large Sample Size



Now you can get straight to work on samples as tall as 14.5" with the DVM6 M digital microscope. The heart of the DVM6 M digital microscope is a fully apochromatic optical train, allowing you to view your sample in stunning detail. Leica

Microsystems has a tradition of more than 160 years of pioneering innovations in optical microscopes. The DVM6 sets a new precedent for clarity and resolution.

Leica Microsystems, Inc.  
www.leica-microsystems.com

## Demonstration Hood



Classroom Demonstration Hood is ideal for classroom experiments and demonstrations because of its viewing visibility from all four sides. An instructor can perform a science demonstration while the class can gather around and safely observe. The hood can also be used as an individual student workstation or a vented storage enclosure. A hinged viewing window or optional horizontal sliding glass panels allow for easy access and user safety. An integral exhaust blower safely exhausts fumes and odors.

HEMCO Corporation  
www.HEMCOcorp.com

## Now in Series Production: Basler Dart BCON for MIPI Development Kit with Qualcomm Technologies SoC



The BCON for MIPI interface combines MIPI technology with proven standards and the convenient features of the Machine Vision world. This innovative approach uses the powerful Qualcomm Spectra™ ISP, significantly reducing the overall processor load of the system and

freeing up more computing power for the actual application. The dart camera module has 5-megapixel resolution and 60 fps based on ON Semiconductor's AR0521 sensor.

Basler AG  
www.baslerweb.com

## JAI's New 4K Trilinear Color Line Scan Camera Has 10 GigE Interface

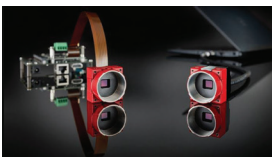


The new SW-4000TL-10GE features the same 4K (4096 pixels) line resolution and the same 66 kHz line rate for 24-bit non-interpolated RGB output as the original

SW-4000TL-PMCL model. But instead of the Camera Link interface found on the original model, the SW-4000TL-10GE delivers its output over a versatile GigE Vision interface able to adjust to whatever speed the host or network can support.

JAI Inc.  
www.jai.com

## First Alvium Camera Series Models from Allied Vision



The first series models of the Alvium camera series powered by ALVIUM® Technology from Allied Vision are available. Allied Vision starts the camera series with the release of three 1500 series models with a MIPI CSI-2

interface and one 1800 series model with USB3 Vision interface. In the following months, the range of Alvium cameras will be continuously expanded with further models and sensors.

Allied Vision Technologies GmbH  
www.alliedvision.com

## VSE Balance Enclosure for Critical Procedures Involving Powders and Liquids

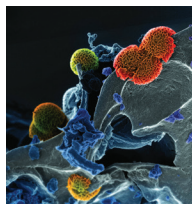


The VSE is offered in 24", 36", and 48" widths to accommodate an analytical balance and other small-scale lab processes. It is constructed of chemical-resistant metal framing and 1/4" thick clear acrylic side panels and viewing sash. Efficient air flow design with airfoil and bypass directs contaminants to baffled exhaust thereby providing superior air flow and

containment performance for user protection. The ergonomic design provides added user comfort.

HEMCO Corporation  
www.HEMCOcorp.com/vse.html

## Major Improvements in Workflow Offerings for Materials Science Core Facilities Introduced

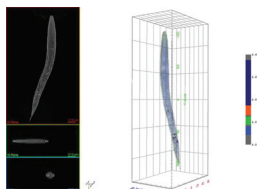


ZEISS introduces new capabilities for ZEISS ion beam microscopes, which cover advancements in analytics, tomography, sample preparation, and data integrity. This brings new possibilities in engineering materials, energy materials, soft materials, and geosciences covering megatrends in additive manufacturing, battery and photovoltaic research, building

materials, and nanomaterials. This new SIMS solutions for elemental analysis across the ZEISS Crossbeam family adds a significant analytical capability to ZEISS ion beam microscopes.

Carl Zeiss Microscopy, LLC  
www.zeiss.com/microscopy

## Tomocube HT-Holotomography Microscopes for Live Cell Imaging



Tomocube is the first company to fit a motorized stage to a holotomography microscope. Offering a step size of just 70 μm, the stage allows specimens up to 8 mm × 8 mm to be imaged in their entirety. The motorized stage is equipped with "Mark & Find," which

enables multiple cell locations to be recorded and rapidly returned to throughout an experiment. It also has "Click & Shift," which centers a defined target position in the field of view.

Tomocube, Inc.  
www.tomocube.com

## Image From Macro To Micro with One Microscope



The DMi8 modular microscope with exclusive 0.7× macro objective provides: 4× the field of view with 35.7 mm sample overview. From Macro to Nano: change magnification from 0.7× to 100× with a click of your mouse. Inverted microscopes enable you to save time and money. Unlike upright microscopes, you can simply put

your specimen on the stage, focus once and maintain focus for all magnifications and further samples.

Leica Microsystems  
www.leica-microsystems.com