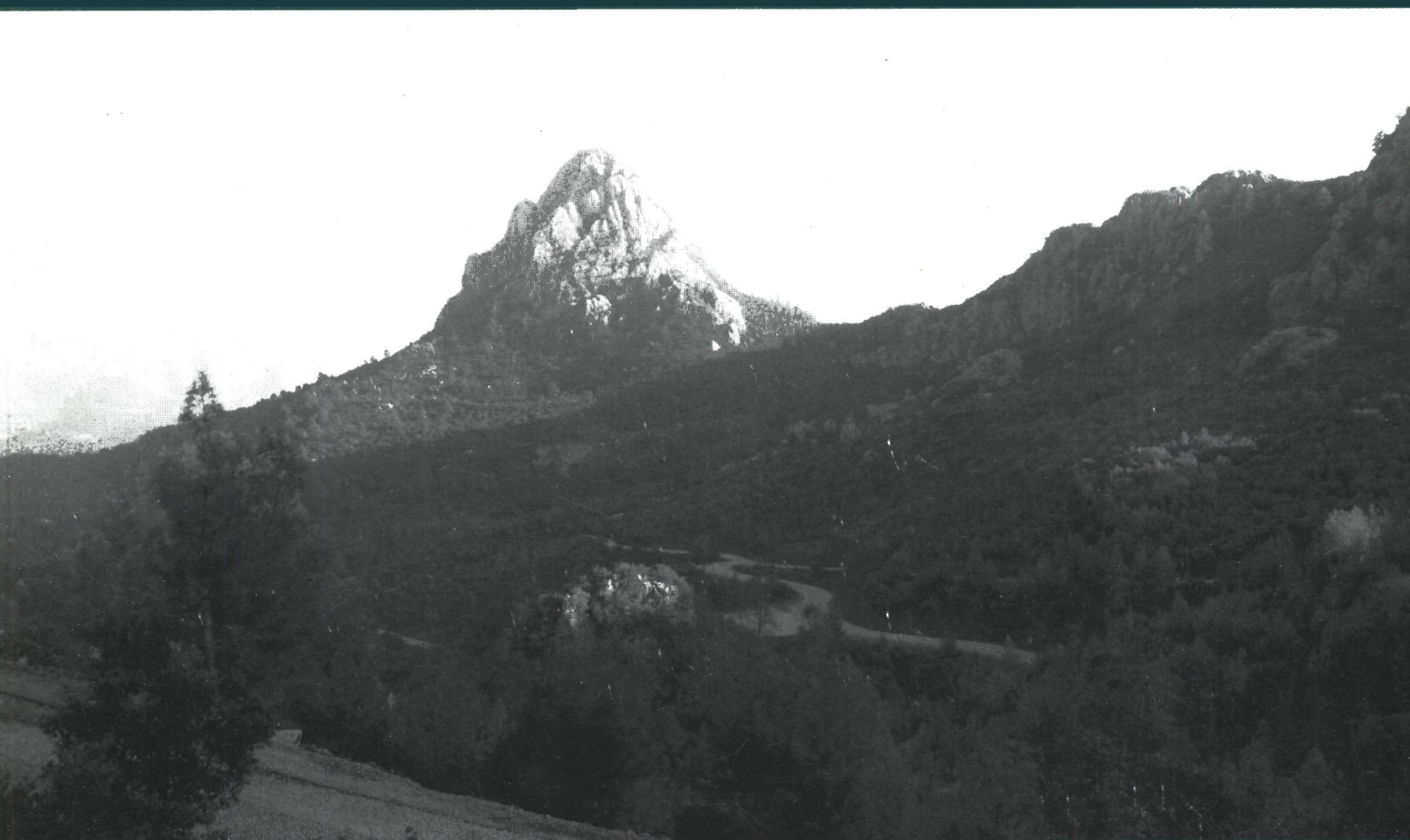


ANATOLIAN STUDIES

Journal of the British Institute of Archaeology at Ankara

Volume 53

2003



Published annually by
THE BRITISH INSTITUTE OF ARCHAEOLOGY AT ANKARA
10 Carlton House Terrace, London SW1Y 5AH

ISSN 0066-1546

BRITISH INSTITUTE OF ARCHAEOLOGY AT ANKARA

The British Institute of Archaeology at Ankara supports, promotes and publishes British research focused on Turkey and the Black Sea littoral in all academic disciplines within the arts, humanities and social sciences, whilst maintaining a centre of excellence in Ankara focused on the archaeology and related subjects of Turkey.

A small staff at the Institute's premises in Ankara, headed by Dr Hugh Elton as Director, conduct their own research, assist scholars and maintain the centre of research. The centre houses a library of over 42,000 volumes, research collections of archaeobotanical, epigraphic and pottery material, together with collections of maps, photographs and fieldwork archives, and a laboratory and computer services. Access to these resources is available free of charge to members of the Institute. The Institute is able to offer to members, for a reasonable charge, the use of accommodation, surveying and photographic equipment, and vehicles.

A range of fieldwork projects, as well as museum-based research and publication projects, are currently sponsored by the Institute. Excavations presently supported include those at the Neolithic site of Çatalhöyük directed by Ian Hodder via the University of Cambridge, at the prehistoric site of Domuztepe directed by Stuart Campbell of the University of Manchester and Elizabeth Carter of the University of California, Los Angeles, at Hellenistic Pichvnari in the Republic of Georgia directed by Michael Vickers of the Ashmolean Museum and Amiran Kakhidze of Batumi Archaeological Museum, and at the Byzantine city of Amorium directed by Chris Lightfoot of the Metropolitan Museum of Art, New York. Surveys range from the investigation of the Iron Age city of Kerkenes Dağ by Geoff Summers of the Middle East Technical University, to the study of the Byzantine Anastasian Wall and associated features conducted by Jim Crow of the University of Newcastle upon Tyne.

Subscription to the Institute costs £30 per annum (£15 for students and those who are unwaged). Members are entitled to copies of the Institute's journal, *Anatolian Studies*, and of its annual publication on current research, *Anatolian Archaeology*, a discount on other Institute publications, notification of conferences and lectures, and access to the library, other research resources and accommodation in Ankara.

To join the Institute, or for further information about its work, please contact us at

British Institute of Archaeology at Ankara
10 Carlton House Terrace, London SW1Y 5AH
Email: biaa@britac.ac.uk
Web site: www.biaa.ac.uk

Back copies of *Anatolian Studies* are available from
Oxbow Books, Park End Place, Oxford OX1 1HN
www.oxbowbooks.com

Cover photo (courtesy of Lutgarde Vandeput and Veli Köse): view of Bodrumkaya from the north. The ancient city of Pednelissus is situated on its western and southern slopes. See 'Inscriptions from Pednelissus' by Ralf Behrwald.

ANATOLIAN STUDIES

Journal of the British Institute of Archaeology at Ankara

Volume 53

2003

Contents

Burials in context: The 1960s inhumations of Çatalhöyük East <i>Bleda S. Düring</i>	1
Plant stores at pottery Neolithic Höyücek, southwest Turkey <i>Danièle Martinoli and Mark Nesbitt</i>	17
The early second millennium ceramic assemblage from Kenan Tepe, southeastern Turkey. A preliminary assessment <i>Bradley J. Parker and Lynn Swartz Dodd</i>	33
Troy in clearer perspective <i>Dieter Hertel and Frank Kolb</i>	71
Urartian crop plant remains from Patnos (Ağrı), eastern Turkey <i>Emel Oybak Dönmez</i>	89
New rock-cut tombs at Etenna and the rock-cut tomb tradition in southern Anatolia <i>Nevzat Çevik</i>	97
Inscriptions from Pednelissus <i>Ralf Behrwald</i>	117
A land dispute from the Lycian borderland <i>Hüseyin Köktürk and N.P. Milner</i>	131
Inscriptions from Melli (Kocçaliler) in Pisidia <i>Stephen Mitchell</i>	139
Pollen sequences from the city of Sagalassos (Pisidia, southwest Turkey) <i>Marleen Vermoere, Simon Six, Jeroen Poblome, Patrick Degryse, Etienne Paulissen, Marc Waelkens and Erik Smets</i>	161
Sykeon rediscovered? A site at Kiliseler near Beypazarı <i>David Barchard</i>	175

Published annually by
THE BRITISH INSTITUTE OF ARCHAEOLOGY AT ANKARA
10 Carlton House Terrace, London SW1Y 5AH

ISSN 0066-1546

EDITORIAL BOARD

Dr Stuart Campbell (University of Manchester)
Dr J.J. Coulton (University of Oxford)
Dr Hugh Elton (British Institute of Archaeology at Ankara)
Dr Warren Eastwood (University of Birmingham)
Dr Stephen Hill (University of Warwick)
Dr Tamar Hodos (University of Bristol)

ACADEMIC EDITOR

Professor A.A.M. Bryer (University of Birmingham)

EXECUTIVE EDITOR

Gina Coulthard (British Institute of Archaeology at Ankara)

Anatolian Studies is a refereed journal

Articles for publication, requests for *Notes for Contributors*
and other correspondence should be addressed to
The Executive Editor, *Anatolian Studies*
British Institute of Archaeology at Ankara
10 Carlton House Terrace, London SW1Y 5AH
Email: biaa@britac.ac.uk

With acknowledgements to The Society of Dilettanti

© British Institute of Archaeology at Ankara 2003
ISSN 0066–1546

All rights reserved. No parts of this publication may be reproduced, stored in a retrieval system, or transmitted, in any form or by any means, electronic, mechanical, photocopying, recording, or otherwise, without the prior permission of the British Institute of Archaeology at Ankara.

Printed by Stephen Austin & Sons Ltd, Hertford