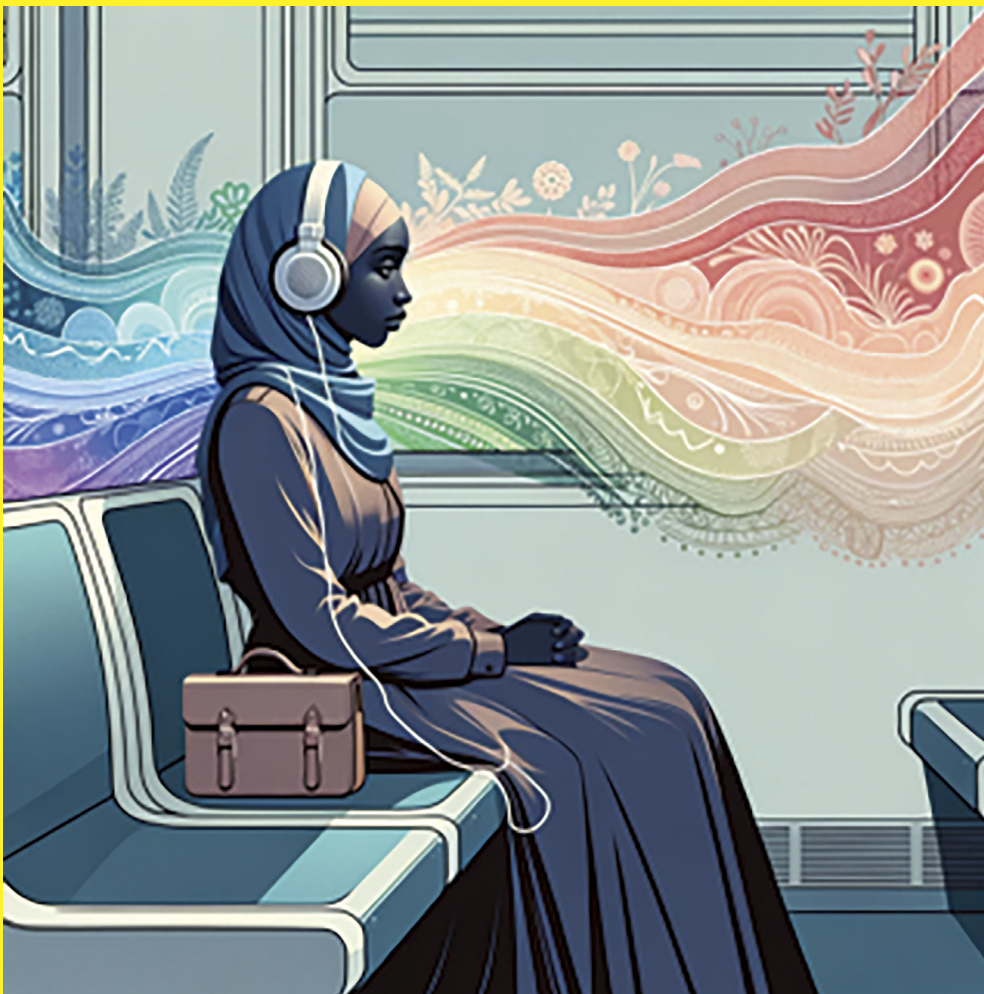


# BJPpsych

The British Journal of Psychiatry

Editor-in-Chief: Professor Gin Malhi



**Gender identity services for children and young people: navigating uncertainty through communication, collaboration and care**

Cass

**Investigating mental healthcare inequalities associated with forced migration: promise and potential pitfalls of electronic health records**

Crowley et al

**Is it now time to prepare psychiatry for a psychedelic future?**

Nutt et al

# BJPsych

The British Journal of Psychiatry

ISSN 0007 - 1250

**Editor-in-Chief and College**

**Editor** Professor Gin Malhi (Australia)

**Deputy Editors**

Emilio Fernandez Egea (UK)

**Editorial Advisors**

German Berrios (UK)  
Tamsin Ford (UK)  
John Geddes (UK)  
Scott Henderson (Australia)  
Belinda Lennox (UK)  
John Rush (Singapore)  
Thomas G. Schulze (Germany)

**Section Leaders**

David Baldwin (UK)  
Dinesh Bhugra (UK)  
Colin Campbell (UK)  
Sam Chamberlain (UK)  
Erika Comasco (Sweden)  
Hugo Critchley (UK)  
Edgar Jones (UK)  
Veena Kumari (UK)  
Stephen Lawrie (UK)  
William Lee (UK)  
Roger Mulder (NZ)  
Allan Young (UK)

**Section Editors**

Katherine Adlington (UK)  
Adam Al-Diwani (UK)  
Shehzad Ali (UK)  
Allan Beveridge (UK)  
Sarah Byford (UK)  
Rakesh K. Chadda (India)  
Angharad de Cates (UK)  
Astrid Chevance (FR)  
Harry Costello (UK)  
Riccardo De Giorgi (UK)  
Judith Harrison (UK)  
Joseph Hayes (UK)  
Cyrus Ho (Singapore)  
Neil Horn (UK)  
Philipp Homan (Switzerland)  
Konstantinos Ioannidis (UK)

Lana Kambeitz-Illankovic (Germany)  
Eirini Karyotaki (The Netherlands)  
Rajeev Krishnadas (UK)  
Dr Lucy Maconick (UK)  
Philip McGuire (UK)  
Edoardo Ostinelli (UK)  
Femi Oyeboode (UK)  
Thomas Reilly (UK)  
Emmert Roberts (UK)  
Joanna Rodda (UK)  
Zena Samaan (Canada)  
Frauke Schultze-Lutter (Germany)  
James Shearer (UK)  
Katharine Smith (UK)  
Mustafa Soomro (UK)  
Ramya Srinivasan (UK)  
Shuichi Suetani (Australia)  
Athula Sumathipala (UK)  
Melvyn Zhang (Singapore)

**International Editorial Board**

Regi Alexander (UK)  
Asit Biswas (UK)  
Alec Buchanan (USA)  
Patricia Casey (Ireland)  
Andrew Cheng (Taiwan)  
John Cookson (UK)  
Pim Cuijpers (The Netherlands)  
Claire de Oliveira (UK)  
Colin Drummond (UK)  
Jianfeng Feng (China)  
Andrew Forrester (UK)  
Sinan Guloksuz (The Netherlands)  
Peter Haddad (UK)  
Madelyn Hicks (USA)  
Khalida Ismail (UK)  
Navneet Kapur (UK)  
Kenneth Kaufman (USA)  
Steve Kisely (Australia)  
Ivan Koychev (UK)

Marinos Kyriakopoulos (Greece)  
Lin Lu (China)  
Kwame McKenzie (Canada)  
Marco Mula (UK)  
Martin Orrell (UK)  
Sarah Peters (UK)  
Michael Phillips (China)  
Mariana Pinto Da Costa (UK)  
Sukhwinder Shergill (UK)  
Dan Siskind (Australia)  
Eric Tan (Singapore)  
Leila Tarokh (Switzerland)  
Derek Tracy (UK)  
Richard Williams (UK)  
Yaara Zisman-Ilani (USA)

**Statistical Advisors**

Pak Chung Sham (China)  
Dawn Holmes (USA)  
Anikö Lovik (Sweden)  
Nick Meader (UK)  
Prathiba Natesan Batley (USA)  
Eva Petkova (USA)  
Rob Saunders (UK)  
Jingwei Wu (USA)  
Min Yang (China)  
Nanhua Zhang (USA)

**Staff**

*Head of Publishing*  
Hannah Cole  
*Managing Editor*  
Holly Drury  
*Senior Publishing Coordinator*  
Dianndra Roberts

**Past Editors**

Eliot Slater 1961–72  
Edward H. Hare 1973–77  
John L. Crammer 1978–83  
Hugh L. Freeman 1984–93  
Greg Wilkinson 1994–2003  
Peter Tyrer 2003–13  
Kamaldeep Bhui 2013–23

**Subscriptions**

*British Journal of Psychiatry* (ISSN 0007-1250) is published monthly. The six issues starting January 2024 comprise Volume 224, the six issues starting July 2024 comprise Volume 225. Orders from non-members of the College, which must be accompanied by payment, may be sent to any bookseller or subscription agent or direct to the publishers: Cambridge University Press & Assessment, Shaftesbury Road, Cambridge, CB2 8EA, UK, email [journals@cambridge.org](mailto:journals@cambridge.org); or in the USA, Canada and Mexico, to Cambridge University Press & Assessment, Journals Fulfillment Department, 1 Liberty Plaza, Floor 20, New York, NY 10006, USA, email [subscriptions\\_newyork@cambridge.org](mailto:subscriptions_newyork@cambridge.org). Japanese prices for institutions are available from Kinokuniya Company Ltd, P.O. Box 55, Chitose, Tokyo 156, Japan.

The annual subscription prices (including delivery by air but excluding VAT) for Volumes 224/225 are as follows:

	INSTITUTIONS	INDIVIDUALS
Print and online	£702/\$1248	£566/\$880
Online only	£473/\$725	£307/\$481

Single issues are £67 (US\$120 in the USA, Canada and Mexico) plus postage. EU subscribers (outside the UK) who are not registered for VAT should add VAT at their country's rate. VAT registered subscribers should provide their VAT registration number. Claims for missing issues should be made immediately on receipt of the subsequent issue.

Queries from College members about missing or faulty copies should be sent to Customer Services, Cambridge University Press & Assessment, email [journals\\_societies@cambridge.org](mailto:journals_societies@cambridge.org), tel. +44 (0)1223 326070.

**Online access**

*British Journal of Psychiatry* is hosted on the Cambridge Core service at <https://www.cambridge.org/core/journals/the-british-journal-of-psychiatry>.

Information about the College's publications is available at <https://www.rcpsych.ac.uk>.

**Instructions to authors**

Full instructions to authors are given at <https://www.cambridge.org/core/journals/the-british-journal-of-psychiatry/information/instructions-contributors>.

**Advertising**

Correspondence and copy should be addressed to: Stephen H. P. Mell, Advertising Manager, PTM Publishers Ltd, 41 Hart Close, Uckfield, East Sussex TN22 2DA, UK (email [advertising@ptmpublishers.com](mailto:advertising@ptmpublishers.com); tel. 020 8642 0162)

Founded by J. C. Bucknill in 1853 as the *Asylum Journal* and known as the *Journal of Mental Science* from 1858 to 1963.

©The Royal College of Psychiatrists 2024. Unless so stated, material in the *British Journal of Psychiatry* does not necessarily reflect the views of the Editor or the Royal College of Psychiatrists. The publishers are not responsible for any error of omission or fact.

Printed in Great Britain by Henry Ling Limited, The Dorset Press, Dorchester, Dorset DT1 1HD.

This journal issue has been printed on FSC™-certified paper and cover board. FSC is an independent, non-governmental, not-for-profit organization established to promote the responsible management of the world's forests. Please see [www.fsc.org](http://www.fsc.org) for information.



The *British Journal of Psychiatry* is published monthly by the Royal College of Psychiatrists (a charity registered in England and Wales (228636) and in Scotland (SC038369)). The Journal publishes original work in all fields of psychiatry. Manuscripts for publication should be submitted online at <https://mc.manuscriptcentral.com/bjpsych>.

All papers in this journal are peer-reviewed. No person is permitted to take any role in the peer-review of a paper in which they have an interest, defined as follows: fees or grants from, employment by, consultancy for, shared ownership in, or any close relationship with, an organisation whose interests, financial or otherwise, may be affected by the publication of the paper.

# BJPsych

## Contents

### A15 Editorial Board

### BJPsych Editorial

- 299 **Towards a unified theory of the aetiology of schizophrenia**  
Yuchao Jiang, Xiao Chang and Jianfeng Feng

### Guest Editorials

- 302 **Gender identity services for children and young people: navigating uncertainty through communication, collaboration and care**  
Hilary Cass
- 305 **Investigating mental healthcare inequalities associated with forced migration: promise and potential pitfalls of electronic health records**  
Grace Crowley, Angus Roberts, Robert Stewart and Jayati Das-Munshi

### Feature

- 308 **Is it now time to prepare psychiatry for a psychedelic future?**  
David Nutt, Ilana Crome and Allan H. Young

### Original Articles

- 311 **Global, regional and national burdens of depression in adolescents and young adults aged 10–24 years, from 1990 to 2019: findings from the 2019 Global Burden of Disease study**  
Cheng-hao Yang, Jia-jie Lv, Xiang-meng Kong, Feng Chu, Zhi-bin Li, Wei Lu and Xin-yu Li
- 321 **Mapping 15-year depressive symptom transitions in late life: population-based cohort study**  
Federico Triolo, Davide Liborio Vetrano, Caterina Trevisan, Linnea Sjöberg, Amaia Calderón-Larrañaga, Martino Belvederi Murri, Laura Fratiglioni and Serhiy Dekhtyar
- 328 **Lipid-modifying agents and risk of all-cause, natural and suicide mortality in schizophrenia: nationwide cohort study**  
Pao-Huan Chen, Shang-Ying Tsai, Po-Yu Chen, Chun-Hung Pan, Sheng-Siang Su, Chiao-Chicy Chen and Chian-Jue Kuo

- 336 **Extra – Light holds**  
Tom Nutting

### Letter

- 337 **The problem with mental health awareness**  
Lucy Foulkes

### Commentaries

- 339 **New guidance for self-harm: an opportunity not to be missed: commentary, House**  
Allan House
- 340 **New guidance for self-harm: an opportunity not to be missed: commentary, Mughal et al**  
Faraz Mughal, Fiona M. Burton, Harriet Fletcher, Karen Lascelles, Rory C. O'Connor, Sarah Rae, Alex B. Thomson and Nav Kapur

- 341 **Towards a unified theory of the aetiology of schizophrenia: commentary, Kumari**  
Veena Kumari

- 342 **Poem – Walking grief**  
Temitope Ogundare

- 343 **Medical assistance in dying for mental illness: a complex intervention requiring a correspondingly complex evaluation approach: commentary, Malhi et al**  
Gin S. Malhi, Guy Kahane and Julian Savulescu

### Columns

- 345 **Contents of BJPsych Advances**  
346 **Book Reviews**  
349 **Corrigendum**

- 350 **Psychiatry in history – Neurosyphilis and a Nobel Prize: psychiatrist Julius Wagner-Jauregg's pyrotherapy**  
Madhusudan Dalvi

- 351 **Extra – Commentary on 'The Darkness': echoes from Leonard Cohen**  
Paolo Fusar-Poli, Ilaria Bonoldi, Natascia Brondino, Umberto Provenzani, Pierluigi Politi and Stefano Damiani

### Cover picture

#### Refuge

This image is part of the Wellcome funded 'HELIOS-BD' project led by Professor Daniel Smith at the University of Edinburgh ([www.heliosbd.com](http://www.heliosbd.com)). The knowledge exchange workstream of HELIOS-BD (led by Dr Iain Campbell in collaboration with Bipolar Scotland) is co-producing images of the lived experience of bipolar disorder – on the theme of light and mood – using generative Artificial Intelligence (AI) technology. Individuals with bipolar disorder enter a short text description of their experiences into the AI powered image generator. The images below provide an insight into subjective experiences of hypomania and mania.

This image was generated from lived experience describing how the normal outer appearance of people with bipolar disorder hides complex emotions and thoughts. During hypomania, this can be accompanied by more intense sensory experience of music and colour.

We are always looking for interesting and visually appealing images for the cover of the Journal and would welcome suggestions or pictures, which should be sent to Dr Allan Beveridge, British Journal of Psychiatry, 21 Prescott Street, London, E1 8BB, UK or [bjp@rcpsych.ac.uk](mailto:bjp@rcpsych.ac.uk).

