




Research Article

A new chronology for the Welsh hillfort of Dinas Powys

Ewan Campbell¹, Andy Seaman^{2,*} , Alan Lane² & Gordon Noble³

¹ School of Humanities, University of Glasgow, UK

² School of Archaeology, History and Religion, Cardiff University, UK

³ School of Geosciences, University of Aberdeen, UK

* Author for correspondence ✉ seamana@cardiff.ac.uk



Excavated by Leslie Alcock in the 1950s, the inland promontory fort of Dinas Powys is widely cited as a type site for elite settlements of post-Roman western Britain. Alcock's interpretation and dating of the main defences as a Norman-period castle were effectively disproven in the 1990s, but the excavator's original chronology continues to be cited. Here, the authors present a revised chronology, integrating new radiocarbon dates and stratigraphic analysis to re-evaluate the history of occupation. The new phasing redates the main defences to the early medieval period, which aligns with the site's notable early medieval assemblage. The findings contribute to understanding of post-Roman western Britain and the (re)occupation of late antique hilltop sites more generally.

Keywords: Wales, hillfort, early medieval, radiocarbon dating, multivallate fort

Introduction

Fortified sites dominate our view of the central places of power and governance in the early medieval period, particularly in northern and western Britain (Alcock 2003: 179; Seaman 2016: 37; Noble *et al.* 2019: 57). These sites can be understood within the context of a wider movement towards the (re)occupation of hilltops across much of Europe between the third/fourth and seventh centuries AD (Pavlovič & Heinrich-Tamáška 2022). Our understanding of this European 'Late Antique hillfort phenomenon' is constrained, however, by the limited number of large-scale excavations and a lack of reliable dating evidence. Leslie Alcock's 1953–58 excavations at Dinas Powys on the south coast of Wales, which recovered what was at the time and remains today, the largest assemblage of post-Roman (fifth to seventh century) material culture from Wales, provide an internationally important case study.

Received: 20 June 2022; Revised: 20 October 2022; Accepted: 1 November 2022

© The Author(s), 2023. Published by Cambridge University Press on behalf of Antiquity Publications Ltd. This is an Open Access article, distributed under the terms of the Creative Commons Attribution licence (<https://creativecommons.org/licenses/by/4.0/>), which permits unrestricted re-use, distribution, and reproduction in any medium, provided the original work is properly cited

Alcock's 1963 publication of the excavations established Dinas Powys as a type site for post-Roman western Britain. Indeed, for 30 years until the publication of the investigations at Cadbury Congresbury hillfort (Rahtz *et al.* 1992), it was the only post-Roman site in Britain excavated and published to modern standards and thus defined understanding of early medieval 'Celtic' settlement in western Britain for a generation of students and academics. Dinas Powys provides a rare example for the emergence of post-Roman society in a lowland region of the western Roman Empire that was unaffected by 'barbarian' incursion in the fifth and sixth centuries AD (Wickham 2010). It was also one of the first hillforts to have a substantial proportion of its interior excavated, a strategy that remains rare in the investigation of such early medieval sites. Alcock's report was particularly influential due to his attempt to use Welsh and Irish legal and other texts to reconstruct the site's social and political context in the early medieval period. Dinas Powys, he argued, was 'the court (*llys*) and hall (*neuadd*) of a chieftain' of the emergent post-Roman kingdom of Glywysing (Alcock 1963: vii). Alcock's use of late medieval sources was problematic, however, and several aspects of his interpretation have been challenged (Campbell 1991; Seaman 2013).

Nevertheless, the scale of Alcock's excavations and the diversity of the finds recovered remain of international significance and Dinas Powys continues to feature prominently in historical and archaeological scholarship in and beyond Wales (e.g. Davies 1982: 20, 23, 35; Wickham 2005: 815; Charles-Edwards 2013: 223; Carver 2019: 189; Naismith 2021: 169). Our understanding of the substantial artefact assemblage has been enhanced by important re-analysis (Campbell 1991; Graham-Campbell 1991), but uncertainties persist regarding the chronology of the site. Alcock's interpretation of the results of the excavations was hindered by the complex and disturbed stratigraphy of the site, a lack of scientific dating and the excavation techniques of the time. These issues have been compounded by misreadings of Alcock's sequence and wider misconceptions about the form of early medieval fortifications (Alcock 1980). Significant problems with the proposed dating of Dinas Powys were highlighted as early as 1988 (Campbell in Edwards & Lane 1988: 59–61).

A detailed alternative phasing has been presented by Campbell (1991, 1993, 2007), subsequently supported by preliminary radiocarbon dating of material from the site archive (Seaman 2013: 5–6). Nevertheless, Alcock's original chronology still features in specialist and popular literature, and even in the National Monuments Record of Wales (RCAHMW 1991: 99–103; Snyder 1998: 190–2; Konstam 2008: 60; Wiles 2008; Carver 2019: 189–91). The present article draws together more than 30 years of research that challenges and refines the site chronology of Dinas Powys, and integrates a series of more robust absolute dates from a new programme of radiocarbon dating presented here for the first time. We set out a new phasing for Dinas Powys, with substantial implications for the interpretation of this prominent Welsh early medieval site, and for our understanding of post-Roman western Britain and the (re)occupation of Late Antique hilltop sites more generally.

Power centres of the 'Celtic West'

Dinas Powys (ST148723), Glamorgan, is a small inland promontory fort of approximately 0.35ha that is enclosed by four sets of banks and ditches on its southern side. It occupies the tip of a prominent whaleback ridge, the ground dropping off steeply all around. Today, the

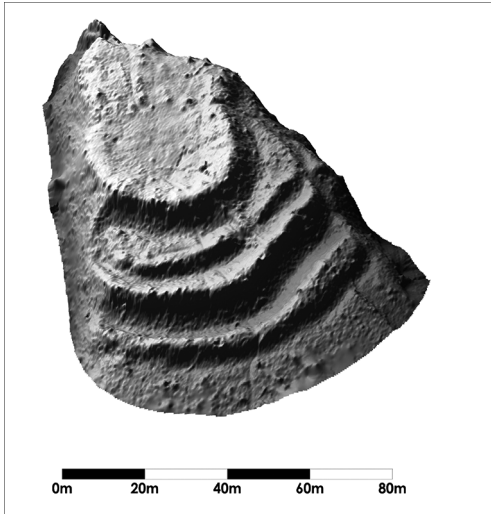


Figure 1. Laser scan of the promontory fort earthworks at Dinas Powys (figure by Andy Seaman).

site is densely wooded, but a recent programme of terrestrial laser scanning provides a clear visualisation of the monumentality of the defences, which stand in contrast to the small area enclosed (Figures 1 & 2). Three of the four banks (1, 3 & 4) are at least 6m wide and 4m high, from bank top to ditch base, and cover an area of 0.25ha; the enclosed interior is only 0.1ha in extent. The layout of the earthworks suggests that bank 2 was constructed first, followed by banks 1 and 3, the latter succeeded by bank 4. Approximately 140m to the south lies a second set of earthworks referred to by Alcock as the ‘Southern Banks’ but officially known as the Ty’n-y-Coed earthworks. These earthworks consist of two sections of bank and ditch forming the north-west and north-east sides of a partial enclosure with dimensions of at least 60m north-east by 50m south-west.

Dinas Powys was initially thought to date to the Iron Age, but Alcock’s excavations quickly discovered sherds of imported post-Roman pottery that were directly comparable to those recently published from Tintagel, Cornwall (Radford 1956). Alcock (1956: 247) also recovered sherds of glass from Merovingian and Anglo-Saxon vessels. During the 1950s, post-Roman material was barely known from Wales, but the richness of the Dinas Powys assemblage indicated activity of significant social status. The exotic and high-status material included the pottery and glass, as well as a large quantity of animal bone, ferrous and non-ferrous metalwork, and evidence for the production of ornamental metalwork, including penannular brooches (Campbell 1991: 434–8; Figures 3 & 4). Evidence for features within the enclosure was slight, but those that were identified included several hearths, along with drainage gullies and postholes that were tentatively interpreted as evidence for two buildings (Figure 5). Approximately 30 contemporaneous hillforts and enclosed settlements are now known in Wales and south-west England (Seaman 2016, 2022), but Dinas Powys remains one of the most important in terms of the quality and quantity of its assemblage. In contrast to the finds at the promontory fort, the Ty’n-y-Coed earthworks produced little material, nonetheless Alcock considered the two proximate sites as at least partly connected.

Dating Dinas Powys

Alcock’s chronology

Alcock’s chronology followed a six-phase scheme (Alcock 1963). Phases 1 and 2 were identified as a pre-Roman settlement, including an enclosed phase defined by Ty’n-y-Coed bank

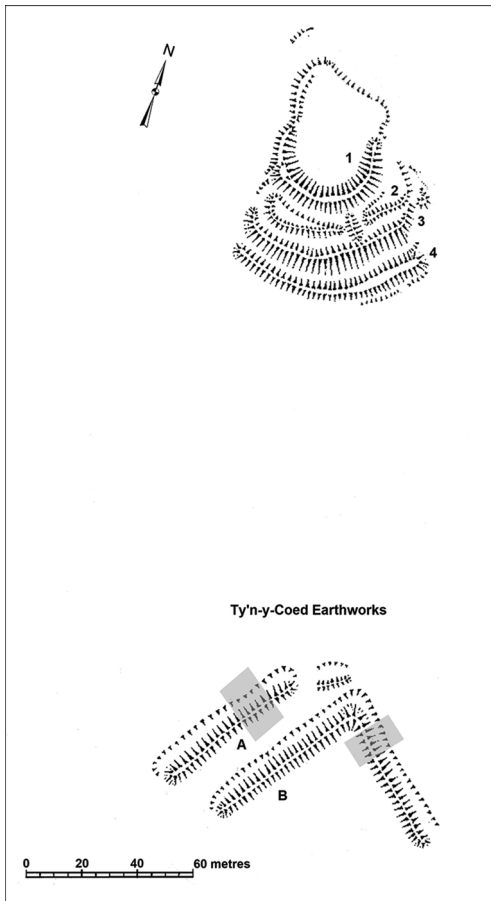


Figure 2. Dinas Powys and Ty'n-y-coed earthworks. 2011–14 trenches shaded. Adapted from RCAHMW image 118383 (© Crown copyright: RCAHMW) (figure by Andy Seaman).

A. Phase 3 was represented by a small number of Romano-British artefacts brought to the site from other areas of occupation within the landscape. In phase 4, the early medieval occupation took shape within a single bank-and-ditch enclosure (bank 2). This was split into two sub-phases: a fifth-century occupation (phase 4a) associated with hearths, a post-built structure, a single infant burial and possibly an enclosing palisade; and, subsequently, a fifth- to seventh-century phase (phase 4b) associated with two buildings identified by drainage gullies, and the accumulation of rich midden material. Following phase 4 the site was abandoned until the late eleventh or twelfth century. The final two phases were dated to the Norman period: first, a native Welsh ringwork castle (eleventh to twelfth century) defined by bank 1 surmounted by a timber palisade (phase 5), subsequently replaced by a multivallate ringwork castle of the late eleventh to twelfth century (phase 6), built in response to the threat of Norman invasion. The later ringwork castle was defined by banks 3 and 4 and an incomplete outer bai-

ley (bank 5); Alcock argued this was built while the site was under siege from Ty'n-y-Coed bank B, the latter interpreted as a Norman siege-work.

Alcock (1963: 61) interpreted phase 4 of the site as a “princely household”, importing wine and pottery from the Mediterranean and hosting craftworkers who made fine objects of bronze and gold (Alcock 1963). While Alcock thought this settlement was of high status, he did not consider it to be a hillfort, but rather a weakly enclosed settlement. He explored the possibility that the monumental banks 1, 3 and 4 belonged to phase 4, but ultimately ascribed them to the ringwork castle of phases 5–6 (Alcock 1963: 73–93). Based on this interpretation, in a short, but influential, article he used Dinas Powys to make the generalised statement that early medieval forts were less than two and a half acres (approximately 1ha) in extent and had “only puny defences” (Alcock 1962: 52).



Figure 3. Reconstruction of a penannular brooch, based on a fragment of a mould die found at Dinas Powys (© Amgueddfa Cymru National Museum Wales).

Problems with Alcock's chronology

Alcock's dating of the multivallate works was based on weak evidence: he argued that five sherds from a single vessel of 'Norman pottery' found in the upper, and much disturbed, layers of bank 1 provided a *terminus post quem* for the bank's construction. His reasoning was influenced by contemporary research on siegeworks and his direct experience in the investigation of ringwork castles (Renn 1959; King & Alcock 1969). The latter included excavations at Penmaen, where the defences and positioning in the landscape display superficial similarities to Dinas Powys (Alcock 1963: 74–81, 1966; J. Knight *pers. comm.*). Alcock was aware that multivallate ringworks and the form of the Ty'n-y-Coed bank B 'siegework' were unusual (Alcock 1963: 91–93)

and, aware of a growing critique, he did revisit his interpretations in a later publication, but ultimately reasserted his original sequence (Alcock 1987: 20–66, 83–96). The Royal Commission on the Ancient and Historical Monuments of Wales (RCAHMW) also persisted in following Alcock's dating of Dinas Powys to the late eleventh or twelfth century, despite noting its exceptional topographical location and form (RCAHMW 1991: 98).

In the late 1980s, a detailed critical analysis of the dating of Alcock's phases 5 and 6, noted that there were no other native Welsh defensive works in Glamorgan of the immediate pre-Norman date, and that those built after the invasion were confined to upland lordships that remained under Welsh control (Campbell 1991, 1993, 2007: 97–9; Spurgeon 1991). Campbell also noted the lack of secure stratification for the pottery sherds from the upper layers of bank 1 and, moreover, that this type of pottery post-dated the Norman invasion of south Wales (Vince 1983: 712; Papazian 1990: 24). Several features of the 'ringworks' are unusual in a Norman context, including the multiple banks and ditches, the use of stone-revetments, the presence of a palisade and the steep narrow path to the entrance. The defences were noted to be much more characteristic of the local Iron Age/early medieval tradition of hillfort construction (RCAHMW 1976). The lack of parallels for the 'siegework' to the south was also highlighted (e.g. Renn 1959: fig 3), as was the paucity of Norman-period finds at Dinas Powys, in contrast to other sites dating to the initial phase of Norman colonisation of Glamorgan (e.g. Alcock 1966; Charlton *et al.* 1977; Papazian 1990: site 29). Campbell therefore concluded that the evidence for a Norman-period phase at Dinas Powys was extremely limited. In contrast, spatial distribution analysis has shown that, in the south-east area of



Figure 4. Selection of artefacts, clockwise from top right: Phocaean red slipware; fragment of lead mould die; copper-alloy mount; millefiori glass rod; crucible; Atlantic and Anglo-Saxon tradition glass (© Amgueddfa Cymru National Museum Wales) (figure by Mark Lodwick).

the fort at least, early medieval pottery and glass formed coherent groups of fragments from individual vessels, and that in relation to bank 1, the stratigraphic position of imported material corresponds with the relative dating of these imports (Campbell 2007: 88–99; Figure 6). These observations preclude Alcock's hypothesis that early medieval material had been 'scraped-up' and redeposited to form the later Norman defences.

New dating evidence

Campbell's (1991) initial critique noted that radiocarbon dating could be used to test Alcock's dating of phases 5 and 6. But, while stratified charcoal samples were identified in Alcock's archive these were, at the time, too small for dating. Subsequently, with the assistance of Amgueddfa Cymru (National Museum Wales), it has been possible to identify eight charcoal samples suitable for dating with modern AMS techniques (Table 1). These are single entity, short-life samples from securely stratified contexts. Four of these samples are from the fills of postholes associated with the 'palisade' that Alcock deemed to be contemporaneous with, or slightly later than, bank 1. Two samples are from the midden deposits on the back of bank 1 and of the two other samples, one comes from a posthole and the other from a metalworking deposit associated with a fragment of a lead die for a penannular brooch mould, both deposits sealed by the construction of bank 1.

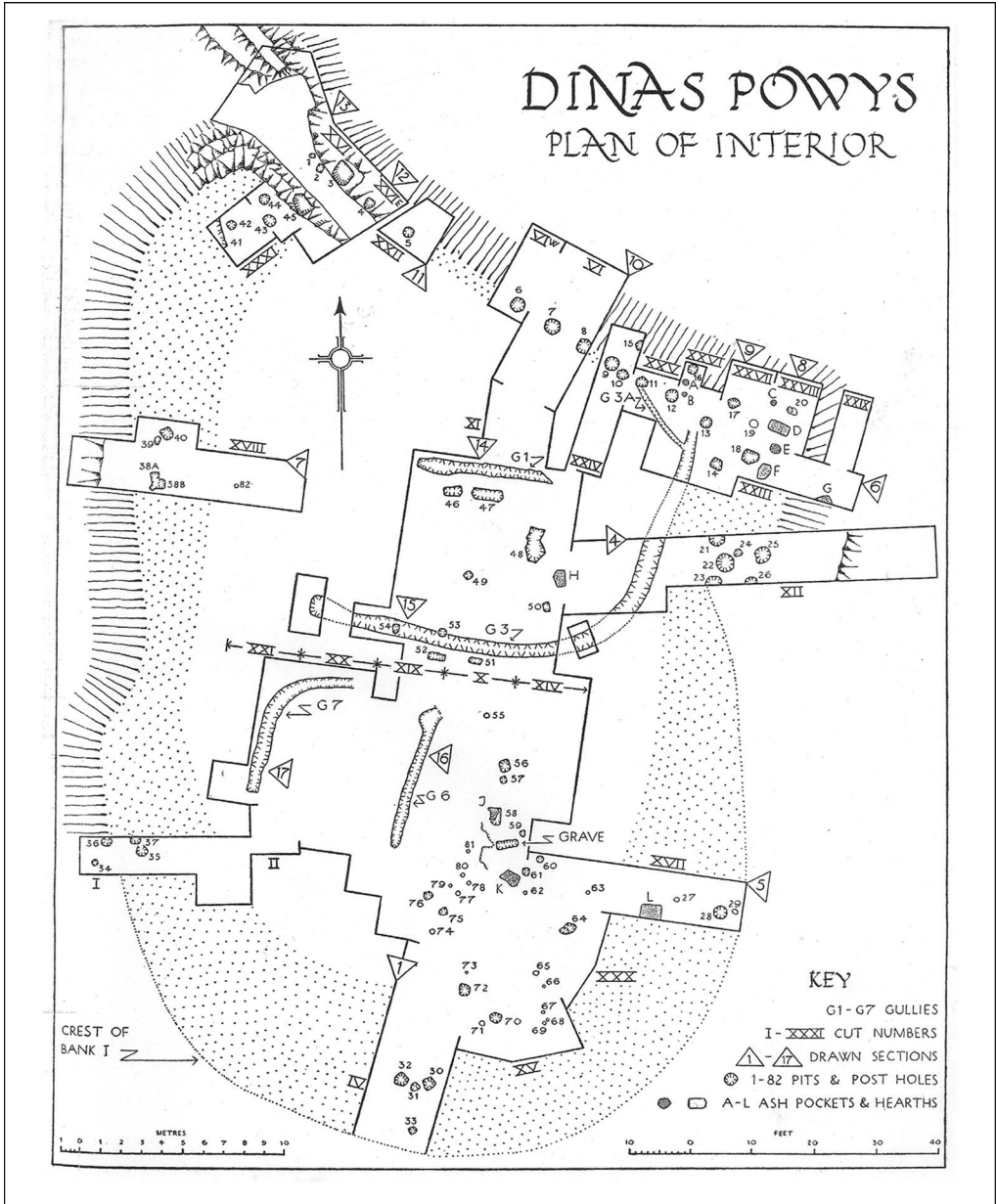


Figure 5. Plan of excavated features (reproduced with the permission of the University of Wales Press).

All the new calibrated radiocarbon dates, including the six from Alcock's 'Norman-period' phase 5, fall in the fifth to seventh centuries AD (Table 1). There are some cases of probable residuality and intrusion: for example, material from below bank 1 returns slightly later dates than the secondary fills of the postholes that cut it, but none of the dated features indicates Norman-period activity. Indeed, Bayesian modelling suggests that the dated activity began in

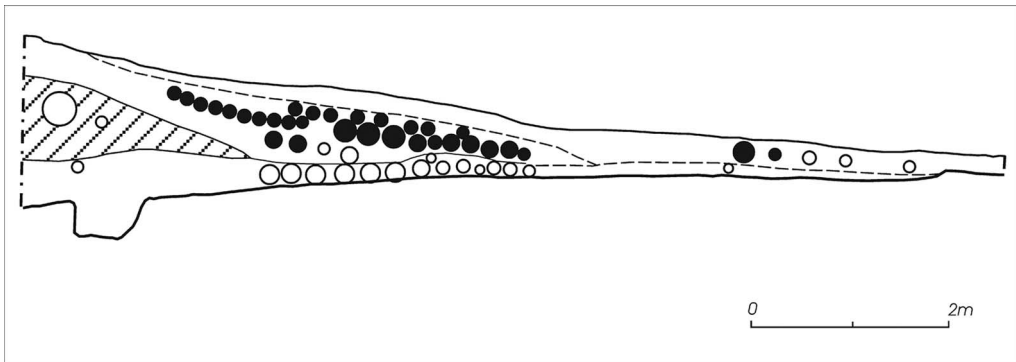


Figure 6. Schematic section of cut XVII (south-eastern side of the fort) with individual imported vessels, showing stratigraphic differentiation between sherds of Mediterranean (later fifth to early sixth century, open circles) and Continental (later sixth to seventh century, solid circles) imports (figure by Ewan Campbell).

(*cal AD 510–600*; 95% probability) and did not stretch beyond the seventh century (end date *cal AD 590–680*; 95% probability), phasing which correlates with the artefactual evidence (Campbell 1991: 97). While there are only a small number of dates available thus far, the modelling also suggests a relatively short span of activity: between 0 and 145 years (95% probability; Figure 7).

Alcock's single 'cutting' through the Ty'n-y-Coed earthworks produced few features and very little material culture and his dating was, by his own admission, speculative, including both a possible Iron Age phase (bank A) and a Norman-period 'siege-work' (bank B). Excavations by Seaman and Lane in 2011–14 found no evidence for a Norman phase at the Ty'n-y-coed earthworks (Seaman & Lane 2019). A sherd of South West Decorated Ware pottery, however, was recovered during the 2011–14 excavation from below bank B, while investigation of the associated ditch revealed an almost complete vessel, also South West Decorated Ware, within the lower fill of the associated ditch. South West Decorated Ware circulated in south Wales between the late-second century BC and the mid-first century AD. A sherd of mid second-century Samian ware was also recovered from the upper fill of the same ditch. The ditch of bank A included charred material dating to the sixth to eighth centuries AD, broadly contemporaneous with, if slightly later than, bank 1 in the interior of Dinas Powys. No conclusive dating material from bank A was recovered, but the finds from an agricultural soil sealed by the bank included two small sherds of South West Decorated Ware. The radiocarbon dates from the ditch associated with bank A provide a strong indication that the ditch was not cut before the mid-seventh century AD (Seaman & Lane 2019: 130).

A new chronology

The acquisition of new radiocarbon dates means that a revised chronology can be proposed for Dinas Powys.

Phase 1 relates to Neolithic/Early Bronze Age activity, perhaps consisting of an unenclosed settlement situated both on the promontory and in the Ty'n-y-Coed earthworks

Table 1. Radiocarbon dates associated with bank 1, calibrated in OxCal 4.4 using the IntCal 20 curve (Bronk Ramsey 2009; Reimer *et al.* 2020).

Code	Years BP	95% Cal AD	Material	Context	Alcock Phase	Revised Phase
OxA-25738	1456 ± 25	573–648	<i>Corylus cf. avellana</i>	XII(4), pre-bank 1 deposit associated with metal working evidence	4a/b	4a
SUERC-82884	1444 ± 24	584–651	<i>Corylus cf. avellana</i> (roundwood 5 growth rings)	XII24, small posthole sealed by bank 1	Pre-5	4a
SUERC-84662	1539 ± 34	432–599	<i>Salix</i> sp. (roundwood < 20 growth rings)	XII22, posthole, inner line	5	4b
SUERC-82885	1531 ± 24	436–602	<i>Maloideae</i> (roundwood < 20 growth rings)	XII23, posthole, inner line	5	4b
SUERC-82889	1478 ± 21	562–641	<i>Corylus cf. avellana</i> (roundwood < 20 growth rings)	XV(6), midden deposit on rear of bank 1	5	4b
OxA-25739	1472 ± 25	560–645	<i>Quercus</i> sp. (cf. sapwood)	XII25, posthole, outer line	5	4b
SUERC-84660	1455 ± 34	564–652	<i>Corylus cf. avellana</i> (roundwood 7 growth rings)	IV12BC, midden deposit on rear of bank 1	5	4b
SUERC-84661	1405 ± 34	590–670	<i>Salix</i> sp. (roundwood < 20 growth rings)	XII21, posthole, inner line	5	4b

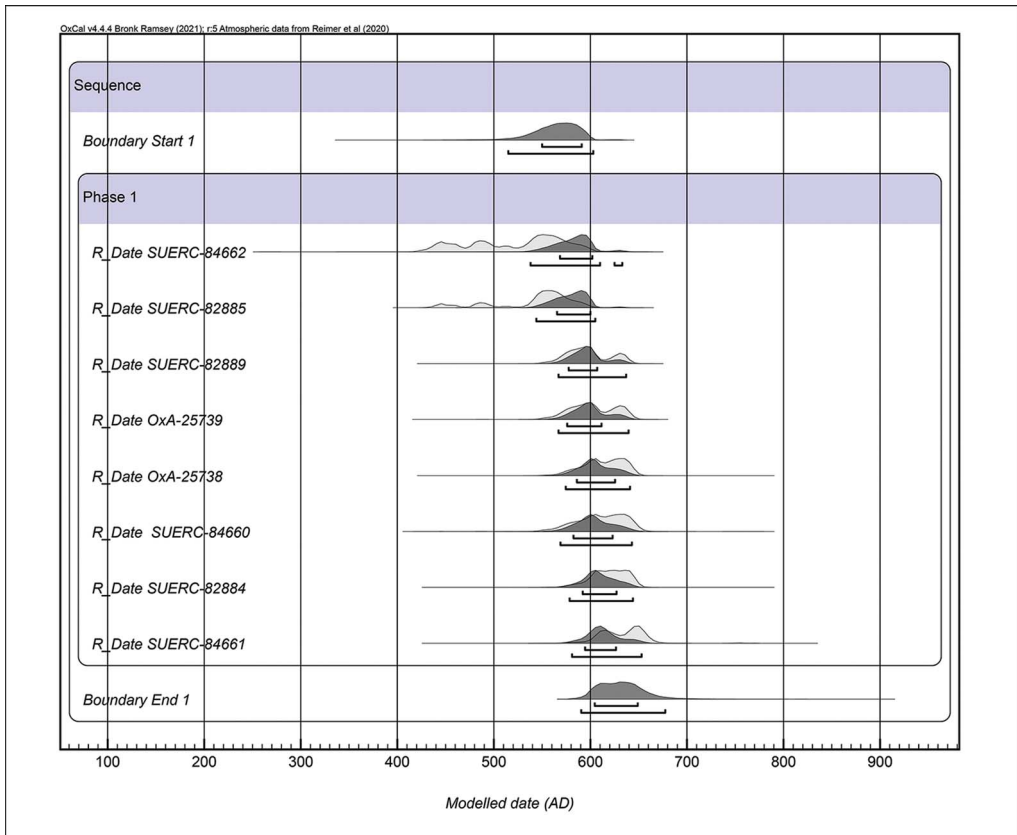


Figure 7. Single-phase model for radiocarbon dates associated with bank 1. Modelled in OxCal 4.4 using the IntCal 20 curve (Bronk Ramsey 2009; Reimer et al. 2020) (figure by Andy Seaman).

area. Understanding of the nature and chronology of the prehistoric material recovered by Alcock has improved significantly since the 1950s, and re-analysis of the Dinas Powys material suggests revision of the early part of Alcock's dating scheme is needed. While the quantity of prehistoric pottery and flint finds is not large (169 pieces of flint from the 1953–58 excavation and 11 pieces from 2011–14), the character and quantity is generally consistent with some form of *in situ* Neolithic and Early Bronze Age settlement (Butler 2005). The presence of primary and secondary flakes, cores and flake debitage indicate a series of individual knapping events. Although Neolithic or Early Bronze Age occupation features have not been identified, it is possible that the intensive later occupation has truncated or masked features from these earlier periods.

Phase 2 includes Middle to Late Bronze Age/Early Iron Age activity on the promontory, potentially associated with postholes identified by Alcock and possibly enclosed by bank 2. Sherds of prehistoric pottery from the promontory (see Figure 8), that Alcock assigned to his phase 1 (Iron Age A), can now be broadly assigned to the late Middle to Late Bronze Age (Jody Deacon, *pers. comm.*). Sherds from the make-up of banks 1 and 3, have a slightly

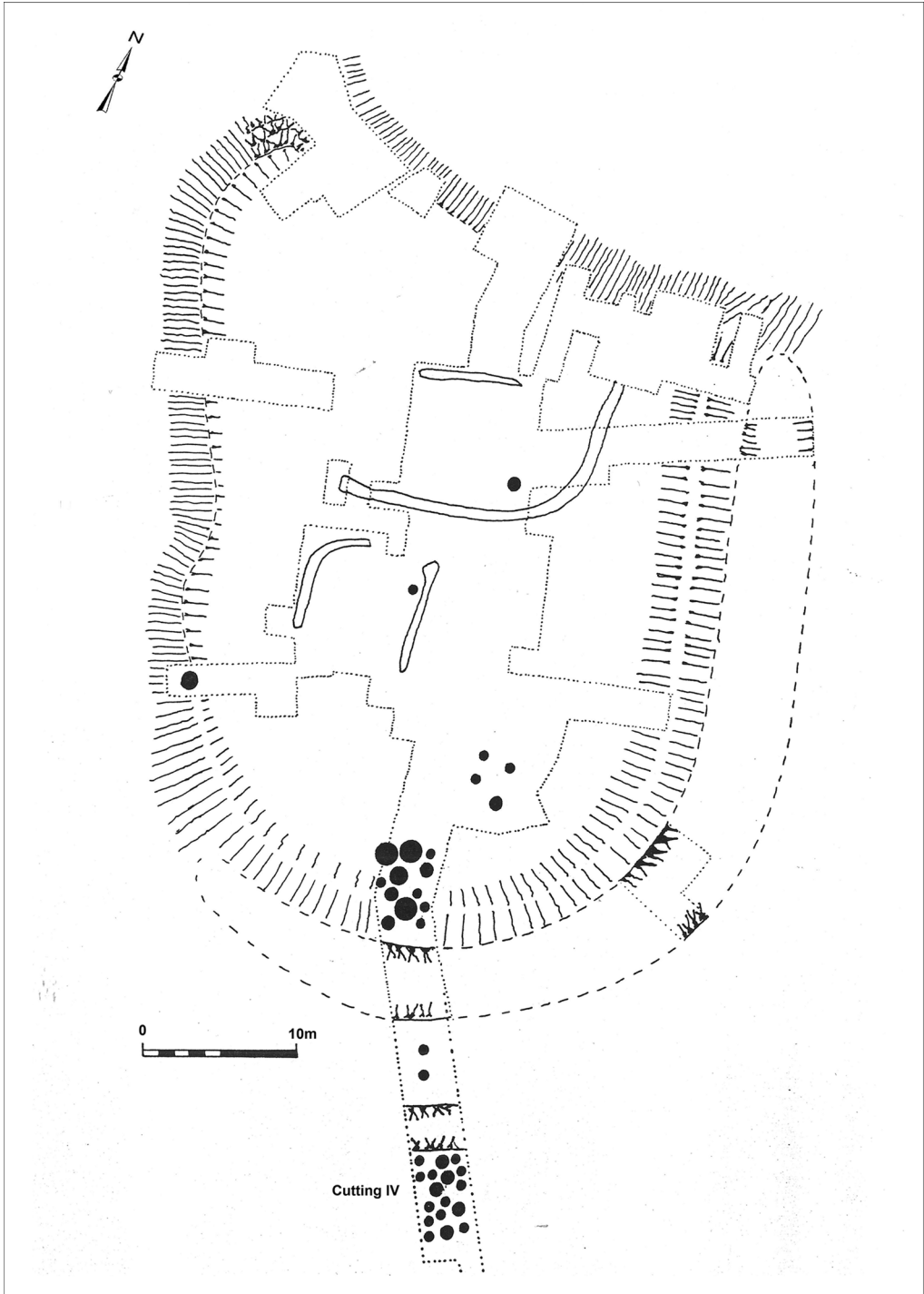


Figure 8. Distribution of prehistoric pottery, excluding sherds from redeposited contexts (figure by Ewan Campbell).

later character, being much thinner-walled and displaying the finger-tip decoration characteristic of the Early Iron Age. Much of this material was recovered from early medieval contexts (see below), so it is difficult to determine the nature of activity. Nevertheless, a small amount of animal bone was recovered from deposits pre-dating rampart construction, and it is possible that postholes in the south-eastern part of the promontory, and below bank 3, are associated with this phase. Both Alcock (1963: 27) and Campbell (1991: 55; 2007) discussed the possibility that bank 2, which is of a very different character to banks 1, 3 and 4, was prehistoric in date, but ultimately they favoured construction in the fifth or sixth century AD. The dating evidence for bank 2 should not be overstated however, and while it is true that the distribution of prehistoric sherds extended either side of the bank, suggesting that occupation was not constrained by it, only two small sherds were recovered from beneath it. Indeed, when discussing a single sherd of early medieval imported pottery which was also found below the bank, Alcock (1963: 27) noted that the area was much disturbed by animal burrows. Overall, the date of bank 2 is at present unresolved, and while Alcock argued that the focus of prehistoric settlement probably lay outside of the excavated area (Alcock 1963: 18–19), it remains a possibility that bank 2 was associated with occupation on the northern end of the promontory between the Middle Bronze Age and Early Iron Age.

Phase 3 consists of a Late Iron Age/early Roman settlement ‘enclosure’ (Ty’n-y-Coed bank B), which was probably associated with the formation of an agricultural soil sealed by Ty’n-y-Coed bank A. This appears to have been abandoned by the early Roman period, after which there is little evidence for activity here until the early medieval period.

Phase 4a sees intensive development from the fifth century AD onwards, beginning with high-status settlement activity on the promontory within the area enclosed by bank 2. This settlement was associated with metalworking evidence and Mediterranean imported pottery (Late Roman Amphora LR1, 2 & 4. Phocaeen Red Slipware, African Red Slipware).

Phase 4b features a developed promontory fort of sixth to seventh century AD date. High-status occupation continued, but now associated with pottery (E ware, DSPA ware) and glass vessels derived from a later phase of trade focused on southern France, rather than the Mediterranean. Bank 1 was constructed and banks 3 and 4 are most likely of this phase too. Construction of Ty’n-y-Coed bank A, potentially an unfinished enclosure associated with unrealised re-occupation of the Late Iron Age bank B enclosure, may also belong to this or the following phase.

Phase 5 relates to the abandonment of the hill in the later seventh or eighth century.

Phase 6 is represented by small quantities of late- and post-medieval pottery, most likely derived from casual visits to the site and agricultural activity.

Discussion

Our proposed chronology for Dinas Powys departs significantly from the chronology put forward by Alcock and traditionally favoured in the literature published since. With regard to the early evidence, we suggest that the prehistoric activity was more persistent and prolonged than has been hitherto appreciated. Phase 1 activity is comparable with other hilltop flint scatters in the region, which appear to relate to temporary occupations exploiting areas of high ground (Locock 2003). Post-Roman activity on the promontory may not have commenced until

c. AD 500, with the major part of Alcock's proposed Norman-period ringwork castle, bank 1, now confirmed to be of early medieval date, as Campbell suspected, and most likely constructed in the late sixth or seventh century AD. Moreover, the early medieval midden deposits identified on the back of bank 1 can be confirmed as *in situ* material (see Campbell 2007: 88–99, fig. 69 for detailed spatial distributions of artefacts and reconstruction of activity areas). The new evidence strongly suggests that the defences of the early medieval fort were far from 'puny' and were greatly out of proportion to the area enclosed—an example of conspicuous display as well as heightened defence? (Seaman 2013: 10–11). The monumentality of the redated defences now better aligns with the richness and exceptional character of the early medieval artefact assemblage.

A possible socio-political context for this fortified power centre comes from the identification of charter evidence for a small, short-lived kingdom in the Cardiff area in the seventh or eighth centuries (Davies 1978, 94; 1982, fig. 38; Campbell 1991: 225). An important early ecclesiastical centre at Llandough lies approximately 2km to the east of Dinas Powys and the two sites may have formed part of a polyfocal central zone for the territory (Seaman 2013: 12–15). Alcock argued for a relationship between the apparently small size of forts such as Dinas Powys and the nature of warfare and social structure in post-Roman western Britain (Alcock 1971: 347). These ideas have been influential (e.g. Wickham 2005: 326–30), but must now be re-evaluated. Dinas Powys may be exceptional, but its wealth and monumentality contrast with interpretations of society in post-Roman western Britain as small-scale and economically under-developed.

Forts with close similarities to Dinas Powys in south Wales include Llanvithyn (ST054718), Parkmill (SS548892) and North Hill Tor (SS453938). The RCAHMW has dated North Hill Tor to the Norman period based on its similarities with Dinas Powys, and while it was noted that Llanvithyn and Parkmill are comparable to Dinas Powys in terms of size and morphology, their similarity was dismissed on the basis of Alcock's phasing of Dinas Powys (RCAHMW 1976: 14, 46, 117–19). The three forts are located close to significant evidence for early medieval activity, including early church foundations and cemeteries, and new dating evidence for Dinas Powys, presented here, indicates that further investigation of these three forts could substantially advance our understanding of early medieval south Wales (Campbell 1991: 228; Seaman & Sucharyna Thomas 2020: 13–14).

The radiocarbon dates from Dinas Powys also suggest that early medieval activity was short-lived, as the promontory fort appears to have been abandoned by the later seventh century. Analysis of dates from all broadly comparable sites in Wales and south-west England indicates that there was a widespread move away from hillforts in the late-sixth/early-seventh century, pointing to a period of significant socio-political and economic change (Comeau *et al.* 2023: 9–10). Consolidation of political units, the growth of the Christian Church and the effects of the Justinianic Plague may have had a significant impact on the decline of hillforts at this time (Campbell 2007: 132; Comeau *et al.* 2023). The archaeological evidence from southern Britain contrasts with that from the north, where later first-millennium AD use of defended sites is increasingly attested (Noble 2016: 30–1). Nevertheless, recent dating on sites in Scotland has shown that certain sites, similar to Dinas Powys, were also of relatively short duration, constructed and destroyed within a few generations at most (Noble *et al.* 2022). The use of fortified sites and their abandonment appears to have

been deeply implicated in the rise (and fall) of individual elite lineages in the early medieval north and west of Britain.

While the new dating from Dinas Powys is important, there is much yet to learn about this and other early medieval power centres in western Britain. Aspects of our re-interpretation of Dinas Powys remain tentative and new programmes of fieldwork and dating would greatly benefit our knowledge of such a key site. Further dating evidence for all the ramparts, along with reassessment of the existing material assemblages, which were only partially published by Alcock (see Campbell 1991: app 8), would be welcome. For example, although the Dinas Powys animal bone assemblage is the largest from western Britain, biases introduced through Alcock's sampling strategy and misunderstandings of the stratigraphy have inhibited re-analysis. The full research potential of Dinas Powys should be seen in the light of recent research-driven excavations of elite sites in other parts of Britain and Ireland, which have brought about step changes in knowledge and understanding (e.g. Noble *et al.* 2019; Scull & Thomas 2020; O'Brien & Hogan 2021). Comparable projects have not been undertaken in Wales and the hilltop location of elite sites of this period means that few are likely to be encountered through development-led investigations. Given its known research potential and the problems outlined above, a pressing case can be made for further excavation and further analysis of the archive material at Dinas Powys. For now, however, the reassessment presented here provides the best understood and dated sequence for any early medieval fort in Wales.

Overall, this article has highlighted how a single pioneering excavation can influence archaeological thinking for generations, and how difficult it can be to shift established narratives even in the face of new evidence. The short-lived burst of activity at hillforts during the fifth to seventh centuries AD was a Europe-wide phenomenon, extending to northern Britain and Ireland—areas which, unlike Dinas Powys, lay outside the former Roman Empire. The revised dating for Dinas Powys presented here provides the basis for a new narrative of the evolution of post-Roman society in western Britain and helps to tie it into similar developments attested elsewhere in western Europe.

Acknowledgements

The laser scan of Dinas Powys was undertaken by Cotswold Archaeology. We would also like to thank Jeremy Knight, Anna Bloxam, Mark Lodwick and Amgueddfa Cymru National Museum Wales.

Funding statement

Dates for bank 1 were partly funded by the Leverhulme Trust Comparative Kingship project (RL-2016-069).

References

- ALCOCK, L. 1956. The hill-fort in Cwrt-Yr-Ala Park, near Dinas Powis (Glam.): I. The defences. *Bulletin of the Board of Celtic Studies* 16: 242–50.
- 1962. Settlement patterns in Celtic Britain. *Antiquity* 36: 51–55.
<https://doi.org/10.1017/S0003598X00118460>

- 1963. *Dinas Powys: an Iron Age, Dark Age and early medieval settlement in Glamorgan*. Cardiff: University of Wales Press.
- 1966. Castle Tower, Penmaen: a Norman ring-work in Glamorgan. *Antiquaries Journal* 46: 178–210.
<https://doi.org/10.1017/S0003581500053245>
- 1971. *Arthur's Britain: history and archaeology AD 367–634*. London: Allen Lane.
- 1980. Refortified or newly fortified? The chronology of Dinas Powys. *Antiquity* 54: 231–2.
- 1987. *Economy, warfare and society among the Britons and Saxons*. Cardiff: University of Wales Press.
- 2003. *Kings and warriors, craftsmen and priests in northern Britain AD 550–850*. Edinburgh: Society of Antiquaries of Scotland.
- BRONK RAMSEY, C. 2009. Bayesian analysis of radiocarbon dates. *Radiocarbon* 51: 337–360.
<https://doi.org/10.1017/S0033822200033865>
- BUTLER, C. 2005. *Prehistoric flintwork*. Stroud: History Press.
- CAMPBELL, E. 1991. Imported goods in the early medieval Celtic west: with special reference to Dinas Powys. Unpublished PhD dissertation, Cardiff University.
- 1993. Dinas Powys, in N. Pounds (ed.) *The Cardiff area: 23–4*. London: Royal Archaeological Institute.
- 2007. *Continental and Mediterranean imports to Atlantic Britain and Ireland, AD 400–800*. York: Council for British Archaeology.
- CARVER, M. 2019. *Formative Britain: an archaeology of Britain, fifth to eleventh century AD*. London: Routledge.
<https://doi.org/10.4324/9780429449130>
- CHARLES-EDWARDS, T. 2013. *Wales and the Britons 350–1064*. Oxford: Oxford University Press.
<https://doi.org/10.1093/acprof:oso/9780198217312.001.0001>
- CHARLTON, P., J. ROBERTS & V. VALE. 1977. *Llantrithyd: a ring-work in Glamorgan*. Cardiff: Cardiff Archaeological Society.
- COMEAU, R., A. SEAMAN & A. BLOXAM. 2023. Plague, climate and faith in early medieval western Britain: investigating narratives of change. *Medieval Archaeology*.
- DAVIES, W. 1978. *An early medieval Welsh microcosm: studies in the Llandaff Charters*. London: Royal Historical Society.
- 1982. *Wales in the Early Middle Ages*. Leicester: Leicester University Press.
- EDWARDS, N. & A. LANE. 1988. *Early medieval settlements in Wales AD400–1100*. Bangor & Cardiff: Bangor University & Cardiff University.
- GRAHAM-CAMPBELL, J. 1991. Dinas Powys metalwork and the dating of enamelled zoomorphic penannular brooches. *Bulletin of the Board of Celtic Studies* 38: 220–32.
- KING, D.J.C. & L. ALCOCK. 1969. Ringworks in England and Wales. *Château Gaillard* 3: 90–127.
- KONSTAM, A. 2008. *British forts in the age of Arthur*. Oxford: Osprey.
- LOCOCK, M. 2003. The distribution of prehistoric settlement in south-east Wales: fieldwork in lithic scatter sites. *Archaeology in Wales* 43: 59–65.
- NAISMITH, R. 2021. *Early medieval Britain c. 500–1000*. Cambridge: Cambridge University Press.
<https://doi.org/10.1017/9781108335638>
- NOBLE, G. 2016. Fortified settlement and the emergence of kingdoms in northern Scotland in the first millennium AD, in N. Christie & H. Herold (ed.) *Fortified settlements in early medieval Europe: defended communities of the 8th–10th centuries*: 26–36. Oxford: Oxbow.
<https://doi.org/10.2307/j.ctvh1dh3x.10>
- NOBLE, N., M. GONDEK, E. CAMPBELL, N. EVANS, D. HAMILTON & S. TAYLOR. 2019. A powerful place of Pictland: interdisciplinary perspectives on a power centre of the 4th to 6th centuries AD. *Medieval Archaeology* 63: 56–94.
<https://doi.org/10.1080/00766097.2019.1588529>
- NOBLE, G., N. EVANS, M. GOLDBERG & D. HAMILTON. 2022. Burning matters: the rise and fall of an early medieval fortified centre. A new chronology for Clatchard Craig. *Medieval Archaeology* 66: 266–303.
- O'BRIEN, W. & N. HOGAN. 2021. *Garranes: an early medieval royal site in south-west Ireland*. Oxford: Archaeopress.
- PAPAZIAN, C. 1990. The survey of medieval ceramics from south-east Wales. *Medieval Ceramics* 14: 32–40.
- PAVLOVIČ, D. & O. HEINRICH-TAMÁSKA. 2022. *Intentions and meaning: a comparative view of Late Antique hilltop sites in Europe*. Ljubljana: National Museum of Slovenia.
- RADFORD, C.A.R. 1956. Imported pottery found at Tintagel, Cornwall, in B. Harden (ed.) *Dark Age*

- Britain: studies presented to E. T. Leeds*: 59–70. London: Methuen.
- RAHTZ, P., A. WOODWARD, I. BURROW, A. EVERTON, L. WATTS, P. PEACH, S. HIRST, P. FOWLER & K. GARDNER. 1992. *Cadbury Congresbury 1968–73 A late/post-Roman hilltop settlement in Somerset*. (British Archaeological Reports British series 223). Oxford: Tempus Reparatum.
- RCAHMW (Royal Commission on the Ancient and Historical Monuments of Wales). 1976. *An inventory of the ancient monuments in Glamorgan Vol. 1 Pre-Norman. Part II. The Iron Age and the Roman Occupation*. Cardiff: Her Majesty's Stationery Office.
- RCAHMW (Royal Commission on the Ancient and Historical Monuments of Wales). 1991. *An inventory of the ancient monuments in Glamorgan Vol. 3. Medieval secular monuments. Part 1a, The early castles, from the Norman Conquest to 1217*. Cardiff: Her Majesty's Stationery Office.
- REIMER, P.J. *et al.* 2020. The Intcal20 Northern Hemisphere radiocarbon age calibration curve (0–55 Cal Kbp). *Radiocarbon* 62: 725–757. <https://doi.org/10.1017/RDC.2020.41>
- RENN, D. 1959. Mottes: a classification. *Antiquity* 33: 106–12. <https://doi.org/10.1017/S0003598X00029136>
- SCULL, C. & G. THOMAS. 2020. Early medieval great hall complexes in England: temporality and site biographies. *Anglo-Saxon Studies in Archaeology and History* 22: 50–67. <https://doi.org/10.32028/9781789697865-4>
- SEAMAN, A. 2013. Dinas Powys in context: settlement and society in post-Roman Wales. *Studia Celtica* 47: 1–22.
- 2016. Defended settlement in early medieval Wales: problems of presence, absence and interpretation, in N. Christie & H. Herold (ed.) *Fortified settlements in early medieval Europe: defended communities of the 8th–10th centuries*: 37–50. Oxford: Oxbow. <https://doi.org/10.2307/j.ctvh1dh3x.11>
- 2022. Hillforts in southern Britain: power and place in the Late Antique landscape, in P. Pergola, G. Castiglia, E. Essa Kas Hanna, & J-A. Segura (ed.) *Perchement et réalités fortifiées en Méditerranée et en Europe Vème-Xème siècles: 420–32*. Oxford: Archaeopress.
- SEAMAN, A. & A. LANE. 2019. Excavation of the Ty'n-y-Coed earthworks 2011–14: the Dinas Powys 'southern banks'. *Archaeologia Cambrensis* 168: 109–135.
- SEAMAN, A. & L. SUCHARYNA THOMAS. 2020. Hillforts and power in the British post-Roman west: a GIS analysis of Dinas Powys. *European Journal of Archaeology* 23: 547–66. <https://doi.org/10.1017/eea.2020.19>
- SNYDER, C. 1998. *An age of tyrants: Britain and the Britons, A.D. 400–600*. Stroud: Sutton.
- SPURGEON, C. 1991. Glamorgan's first castles. *Fortress* 8: 3–14.
- VINCE, A. 1983. The medieval ceramic industries of the Severn Valley. Unpublished PhD dissertation, University of Southampton.
- WICKHAM, C. 2005. *Framing the Middle Ages: Europe and the Mediterranean 400–800*. Oxford: Oxford University Press. <https://doi.org/10.1093/acprof:oso/9780199264490.001.0001>
- 2010. Medieval Wales and European history. *Welsh History Review* 25: 201–8.
- WILES, J. 2008. Dinas Powys fort, previously Cwm George or Cwrt-yr-ala Camp. Available at: <https://cofflein.gov.uk/en/site/301314/> (accessed 13 June 2022).