

## THE DIAGNOSIS OF NEUROLOGICAL CONDITIONS USING ELECTROVESTIBULOGRAPHY (EVESTG)

B.J. Lithgow<sup>1,2,3</sup>, Z.M. Moussavi<sup>4,5</sup>

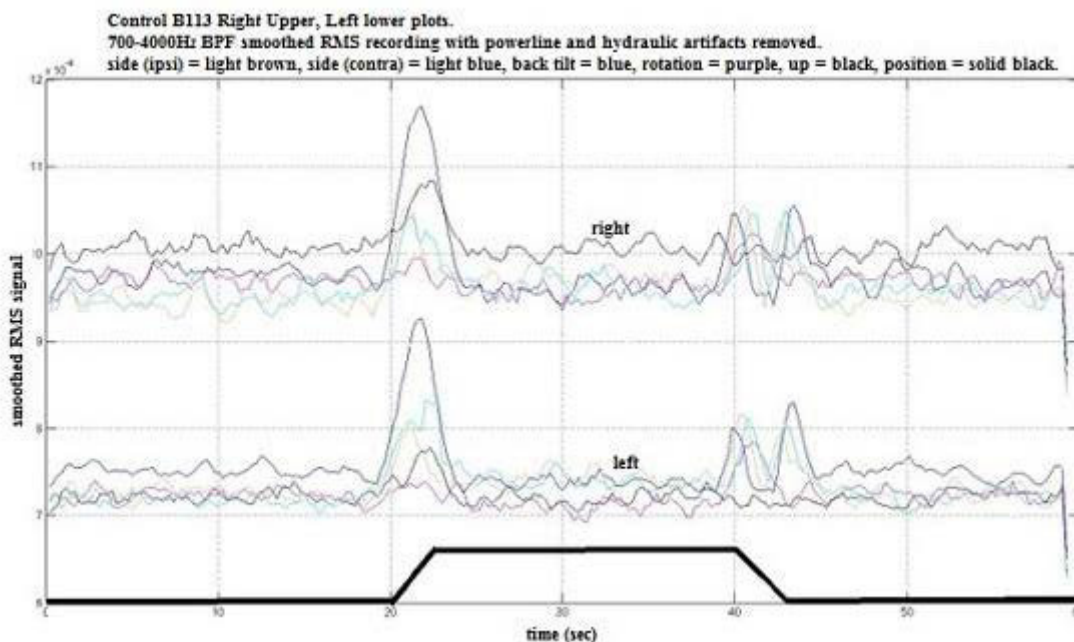
<sup>1</sup>Monash Alfred Psychiatry Research Centre, Monash University, Prahran, VIC, Australia, <sup>2</sup>Riverview Health Center, University of Manitoba, Winnipeg, MB, Canada, <sup>3</sup>Diagnostic and Neurosignal Processing Research Lab, Monash University, Clayton, VIC, Australia, <sup>4</sup>Elec. & Comp. Engineering, <sup>5</sup>Dept. of Psychiatry, University of Manitoba, Winnipeg, MB, Canada

**Introduction:** Dizziness is a defining condition of many pathologies within DSM4. There are many emotional and behavioural impacts on the balance system. EVestG is a purported test of the balance system that has been applied to the detection of schizophrenia. However, there is a need to show whether the EVestG recordings indeed contain vestibular signals.

**Objective:** To investigate a clear vestibular response in EVestG recordings by analysing the signals in response to whole body passive tilts.

**Methods:** EVestG signals were recorded in the ear canals of 5 healthy controls (50-69yrs) and 3 unmedicated Schizophrenics (29-53yrs) in response to whole body tilts. The signals were bandpass filtered (700-4000Hz) to remove muscle interference. The Root Mean Square (RMS) of the filtered signals was measured across 0.5 sec running windows (one sample at a time) and compared between the background and tilting responses.

**Results:** A typical example of the RMS signal for control subjects is shown in Fig 1. During the movement phase t=20-23 and 40-43 sec wherein the vestibular is active the RMS signal showed a marked increase for all signals of all subjects. The typical Schizophrenic response had the peaks seen at t=20-23 skewed to the left.



[figure 1]

**Conclusions:** EVestG signals do show a vestibular component. When validated with larger sample size may be assistive in neurological disorder diagnosis.