

## The inhibitory effect of genistein on hepatic steatosis is linked to visceral adipocyte metabolism in mice with diet-induced non-alcoholic fatty liver disease

Mi-Hyun Kim<sup>1</sup>, Kyung-Sun Kang<sup>2,3\*</sup> and Yeon-Sook Lee<sup>1,4\*</sup>

<sup>1</sup>Department of Food and Nutrition, College of Human Ecology, Seoul National University, 599 Gwanangno, Gwanak-gu, Seoul 151-742, South Korea

<sup>2</sup>Department of Veterinary Public Health, College of Veterinary Medicine, Seoul National University, 599 Gwanangno, Gwanak-gu, Seoul 151-742, South Korea

<sup>3</sup>Adult Stem Cell Research Center, College of Veterinary Medicine, Seoul National University, 599 Gwanangno, Gwanak-gu, Seoul 151-742, South Korea

<sup>4</sup>Research Institute of Human Ecology, Seoul National University, 599 Gwanangno, Gwanak-gu, Seoul 151-742, South Korea

(Received 2 December 2009 – Revised 19 April 2010 – Accepted 29 April 2010 – First published online 6 August 2010)

Non-alcoholic fatty liver disease (NAFLD) has been deeply associated with visceral adiposity, adipose tissue inflammation and a variety of adipocytokines. We reported previously that genistein inhibited NAFLD by enhancing fatty acid catabolism. However, this molecular approach focused on hepatic metabolism. Thus, we have attempted to determine whether this anti-steatotic effect of genistein is linked to visceral adipocyte metabolism. C57BL/6J mice were fed on normal-fat (NF) diet, high-fat (HF) diet and HF diet supplemented with genistein (1, 2 and 4 g/kg diet) for 12 weeks. Mice fed on the HF diet gained body weight, exhibited increased visceral fat mass and elevated levels of serum and liver lipids, and developed NAFLD, unlike what was observed in mice fed on the NF diet. However, genistein supplementation (2 and 4 g/kg diet) normalised these alternations. In the linear regression analysis, visceral fat ( $R$  0.77) and TNF $\alpha$  ( $R$  0.62) were strongly correlated with NAFLD among other NAFLD-related parameters. Genistein supplementation suppressed the hypertrophy of adipocytes via the up-regulation of genes involved in fatty acid  $\beta$ -oxidation, including PPAR $\alpha$ , 5'-AMP-activated protein kinase and very long-chain acyl CoA dehydrogenase, as well as through the down-regulation of genes associated with adipogenesis or lipogenesis, including liver X receptor- $\alpha$ , sterol-regulatory element-binding protein-1c, PPAR $\gamma$ , retinoid X receptor- $\alpha$  and acetyl CoA carboxylase 2. Moreover, genistein supplementation augmented an anti-steatohepatic adiponectin TNF and reduced a steatohepatic TNF $\alpha$ . Collectively, these findings show that genistein may prevent NAFLD via the regulation of visceral adipocyte metabolism and adipocytokines.

### Genistein: Non-alcoholic fatty liver disease: Adipocyte metabolism: Adipocytokines

Hepatic steatosis is the initial stage of chronic non-alcoholic fatty liver disease (NAFLD), and it is characterised by a single large fat droplet that displaces the nucleus or smaller intracytoplasmic droplets<sup>(1)</sup>. The steatosis may be attributed to (1) excessive dietary fat intake; (2) hepatocellular abnormal *de novo* lipogenesis; (3) a surplus supply of NEFA or pro-inflammatory cytokines released from the adipose tissue.

Recent studies have demonstrated that NAFLD and its necroinflammatory form, non-alcoholic steatohepatitis, are deeply associated with visceral adiposity, adipose tissue inflammation<sup>(2)</sup> and various adipocytokines<sup>(3)</sup>. The relationship between NAFLD and visceral fat is based partially on the mechanism by which the obesity-induced infiltration of macrophages into adipose tissue stimulates the release of proinflammatory cytokines including TNF $\alpha$ , IL-6 and IL-1 $\beta$ ,

thereby impairing insulin signalling, stimulating lipolysis and eventually increasing the secretion of NEFA from adipose tissue<sup>(4,5)</sup>. NEFA are then taken up by the liver, which activates nuclear factor  $\chi$ B (NF $\chi$ B) that functions as the master regulator of proinflammatory cytokines and/or increases oxidative stress via NEFA oxidation whereby insulin receptor substrate-2 serine phosphorylation instead of tyrosine phosphorylation occurs, and subsequently induces hepatic insulin resistance, a risk factor of NAFLD<sup>(6,7)</sup>.

Additionally, anti-steatotic leptin and anti-inflammatory adiponectin have been shown to be involved in NAFLD. In animal models, leptin and adiponectin prevent lipid accumulation in non-adipose tissue. Particularly in the liver, this effect is achieved by increasing fatty acid  $\beta$ -oxidation<sup>(8,9)</sup> and lowering the expression of sterol-regulatory element-binding

**Abbreviations:** ACC, acetyl CoA carboxylase; ALT, alanine aminotransferase; AST, aspartate aminotransferase; BW, body weight; C/EBP, CCAAT/enhancer-binding proteins; ER, oestrogen receptor; HF, high fat; LXR, liver X receptor; NAFLD, non-alcoholic fatty liver disease; NF, normal fat; RXR, retinoid X receptor; SREBP, sterol-regulatory element-binding protein.

\* **Corresponding authors:** K.-S. Kang, fax: +82 2 876 7610, email kangpub@snu.ac.kr; Y.-S. Lee, fax: +82 2 884 0305, email lysook@snu.ac.kr

protein (SREBP)-1, a key regulator of fatty acid synthesis<sup>(9,10)</sup>. Furthermore, adiponectin has a protective role in liver inflammation and fibrosis. Using mouse model with endotoxin-induced acute liver injury or CCl<sub>4</sub>-induced liver fibrosis, it was shown that adiponectin attenuates hepatic injury or hepatic stellate cells formation by inhibiting the synthesis and/or release of TNF $\alpha$ <sup>(11)</sup>.

Phytoestrogen genistein is a bioactive molecule which exists as a nutritional constituent of commonly consumed soybeans. Genistein has been proposed to maintain health status against fat deposition<sup>(12)</sup>, CVD, cancer and osteoporosis<sup>(13)</sup> via an oestrogenic/anti-oestrogenic response in target tissues.

We reported previously that genistein prevented NAFLD by accelerating hepatic lipid catabolism via the up-regulation of uncoupling protein-2, PPAR $\gamma$  coactivator-1 and I medium-chain acyl-CoA dehydrogenase, and by enhancing the activity of GSH peroxidase, a major antioxidant enzyme<sup>(14)</sup>. However, this molecular approach focused on hepatic metabolism, and has not been conducted with regard to fat metabolism. It remains unknown as to whether genistein influences hepatic steatosis via the regulation of visceral fat. Thus, we attempted to determine whether the inhibitory effect of genistein on NAFLD is associated with visceral adipocyte metabolism using mice with high fat-induced NAFLD.

## Experimental methods

### *Experimental animals and diets*

C57BL/6J mice, a good model for investigating metabolic syndrome<sup>(15–17)</sup>, were obtained from the Seoul National University Animal laboratories (Seoul, South Korea), and were individually housed in animal facilities maintained at 22  $\pm$  2°C under a 12 h light:dark cycle (light period: 06.00–18.00 hours). Three-week-old C57BL/6J male mice (approximate body weight (BW) 20.1 g) were assigned randomly to five dietary groups (eighteen animals per group): the normal-fat (NF) diet, high-fat (HF) diet and an HF diet supplemented with genistein (1, 2 and 4 g/kg diet). The diets were based on a modification of the AIN 93-G Composition<sup>(18)</sup>. The HF diet contained 36% fat of the total energy than the NF diet which contained lower fat (16% fat of the total energy). Genistein (BioSpectrum Limited, Seoul, South Korea) was substituted for equivalent maize starch in the HF diet (Supplemental Table S1, available online at <http://www.journals.cambridge.org/bjn>).

The dosage utilised in the present study was selected on the basis of our preliminary quantification of plasma genistein via HPLC–MS detection. This dosage generated a plasma genistein level of approximately 4.1  $\mu$ M, similar to that observed in human subjects consuming a diet containing soya products<sup>(19–21)</sup>; this is a level that has been demonstrated to exert biological effects *in vivo* and *in vitro*<sup>(22,23)</sup>.

Mice had free access to food and distilled water. Food intake and BW were recorded every other day.

### *Sample collection and biochemical analysis*

After overnight food deprivation, all the mice were weighed and anaesthetised with ketamine hydrochloride (60 mg/kg BW).

Blood was collected via orbital venous plexus, after which mice were immediately killed.

Livers and adipose tissues were perfused *in situ* with ice-cold saline, and then weighed. Two portions (1 g each) from the liver and adipose tissues were frozen immediately in liquid N<sub>2</sub> and stored at –80°C until used for the analysis of lipid profiles and RNA, respectively. Another portion was stored in 10% formalin for histological study. Serum was prepared via 20 min of centrifugation of blood samples at 3000 rpm at 4°C, and stored at –80°C until analysis.

Serum total cholesterol, TAG, NEFA, alanine aminotransferase (ALT) and aspartate aminotransferase (AST) were determined via enzymatic and colorimetric methods using the manual of the commercially available kits: total cholesterol, A570 nm (BioVision, Mountain View, NC, USA); TAG, A540 nm (Sigma, St Louis, MO, USA); NEFA, A540 nm (Zen-Bio, Research Triangle Park, NC, USA); ALT, A340 nm, (Sigma); and AST A340 nm (Sigma). HDL-cholesterol and LDL-cholesterol were measured using an automatic dry chemistry analyser, Spotchem (Daiichi Kagaku, Tokyo, Japan).

For hepatic lipid analysis, the hepatic total lipids were extracted with a mixture of chloroform–methanol (2:1, v/v)<sup>(24)</sup>, after which TAG and total cholesterol were measured with the extract of total lipids using the enzymatic and colorimetric methods described earlier.

### *Histological analysis of liver and adipose tissue*

Liver and visceral fat pads were fixed in 10% phosphate-buffered formalin, embedded in paraffin and sliced into 3  $\mu$ m sections. The sections were stained with haematoxylin for negatively charged nucleic acids, counterstained with eosin for protein staining and then coverslipped with DPX (BDH, Poole, UK). The images were captured on a confocal microscope (Nikon, Eclipse TE 200, Tokyo, Japan).

Hepatic steatosis was graded as 0 (no fat), 1 (fatty hepatocytes occupying < 33%), 2 (fatty hepatocytes occupying 33–66%) and 3 (fatty hepatocytes occupying > 66%) according to the percentage of hepatic fat droplets<sup>(25,26)</sup>. Adipocyte numbers were calculated by counting the nuclei in a fixed field area (0.9 mm<sup>2</sup>) at 100 $\times$  magnification. Adipocyte sizes were calculated via the following formula<sup>(27)</sup>:

$$D(\text{diameter}, \mu\text{m}) = \frac{2\sqrt{A \times 10^4}}{m\sqrt{n\pi}},$$

where  $A$  is the defined area,  $m$  is the final magnification of photograph and  $n$  is the number of cells counted. In all the samples, at least five different fields of four different tissue sections were evaluated.

### *Total RNA extraction and real-time PCR*

Total RNA of visceral fat was extracted using TRIzol reagent (Invitrogen, Carlsbad, CA, USA) and RNeasy Mini Kit (Qiagen, Valencia, CA, USA). Total RNA (2  $\mu$ g) was reverse transcribed in 20  $\mu$ l of reaction mixture (Invitrogen) containing Moloney Murine Leukemia Virus RT (200 U/ $\mu$ l), RNAase inhibitor (2 U/ $\mu$ l), 0.5 mM-MgCl<sub>2</sub>, 0.01 mM-dithiothreitol,

2.5  $\mu\text{M}$ -oligo(dT)<sub>20</sub> and 0.5 mM-dNTP. The RNA in the reaction mixture was denatured for 5 min at 65°C and annealed at 25°C for 10 min, and then complementary DNA was synthesised for 50 min at 85°C.

For the relative quantification of gene expression, real-time PCR was performed using a Biosystem 7500 (ABI, Carlsbad, CA, USA) real-time PCR system. Five hundred nanograms of complementary DNA were amplified using a 25  $\mu\text{l}$  SYBR Green PCR master mix (ABI) containing SYBR Green 1 dye, AmpliTaq Gold DNA polymerase, dNTP and 2 pmol primer for target genes. Thermal cycling parameters were as follows: one cycle for 2 min at 50°C (for the prevention of primer-dimer generation), one cycle for 10 min at 95°C (for the activation of DNA polymerase) and forty cycles for 15 s at 95°C (for denaturation) and for 1 min at 60°C (for annealing/extension), and a final one cycle for 15 s at 95°C, 20 s at 60°C and 15 s at 95°C (for dissociation curve). The primers for oestrogen receptor (ER) $\alpha/\beta$ , PPAR $\alpha/\gamma$ , leptin, adiponectin, 5'-AMP-activated protein kinase, ACC2, liver X receptors (LXR) $\alpha$ , retinoid X receptor (RXR) $\alpha$ , SREBP-1c, CCAAT/enhancer-binding proteins (C/EBP) $\beta$  and very long-chain acyl CoA dehydrogenase are listed in (Supplemental Table S2, available online at <http://www.journals.cambridge.org/bjn>).

The comparative method of relative quantification ( $2^{-\Delta\Delta C_t}$ ) was utilised in order to calculate the relative expression levels of each target gene (normalised to  $\beta$ -actin).  $\Delta\Delta C_t$  represents  $\Delta C_{t_{\text{high-fat or genistein diet group}}} - \Delta C_{t_{\text{normal-fat diet group}}}$  and all primer sets were designed using the Primer Express Software included in the 7500 system.

#### Statistical analysis

General data are expressed as the means with their standard errors, and were analysed via one-way ANOVA followed by Duncan's multiple range test. Real-time RT-PCR data were analysed via one-way ANOVA with Dunnett's multiple range test. In order to determine the degree of the correlation between NAFLD-related parameters and hepatic steatosis, general linear regression analysis and Pearson's product-moment correlation were performed.

The statistical analysis was conducted using Statistical Analysis Software Proprietary Software Release 8.2

(SAS Institute, Inc., Cary, NC, USA), and  $P < 0.05$  were considered statistically significant.

#### Ethical approval

The procedures involving animals and their care were conducted in accordance with the guidelines of the Institutional Animal Care and Use Committee of the Seoul National University, which are in compliance with the national and international laws and policies (National Institutes of Health Guide for Care and Use of Laboratory Animals, 1996 (7th edition)).

## Results

### Body weight, fat mass and food intake

As shown in Table 1, C57BL/6J mice fed on an HF diet for 12 weeks gained more BW (14 %,  $P < 0.05$ ) than mice fed on an NF diet, but mice fed on a genistein-supplemented diet evidenced a reduction in the BW gain in a dose-dependent manner ( $P < 0.05$ ). We noted no significant differences in food intake. Mice fed on the HF diet evidenced a marked increase in visceral (163 %,  $P < 0.05$ ) and perirenal (93 %,  $P < 0.05$ ) fat mass than mice fed on the NF diet, and this was reversed by genistein supplementation in a dose-dependent manner ( $P < 0.05$ ). BW-adjusted visceral ( $\geq 108$  %,  $P < 0.05$ ) and perirenal ( $\geq 96$  %,  $P < 0.05$ ) fat mass also evidenced a pattern that was similar to that of the fat mass described earlier.

Interestingly, genistein supplementation (2 and 4 g/kg diet) caused BW losses that were higher than those observed with the NF diet. However, the alteration of skeletal muscle or testis weight by feeding genistein supplementation (2 and 4 g/kg diet) was not observed in the present study (data not shown).

### Serum and liver lipid profiles

As shown in Fig. 1, mice fed on the HF diets evidenced higher serum total cholesterol (39 %,  $P < 0.05$ ), NEFA (71 %,  $P < 0.05$ ) and LDL-cholesterol (313 %,  $P < 0.05$ ) levels than mice fed on an NF diet, whereas they evidenced lower TAG

**Table 1.** Body weight (BW), fat mass and food intake\*

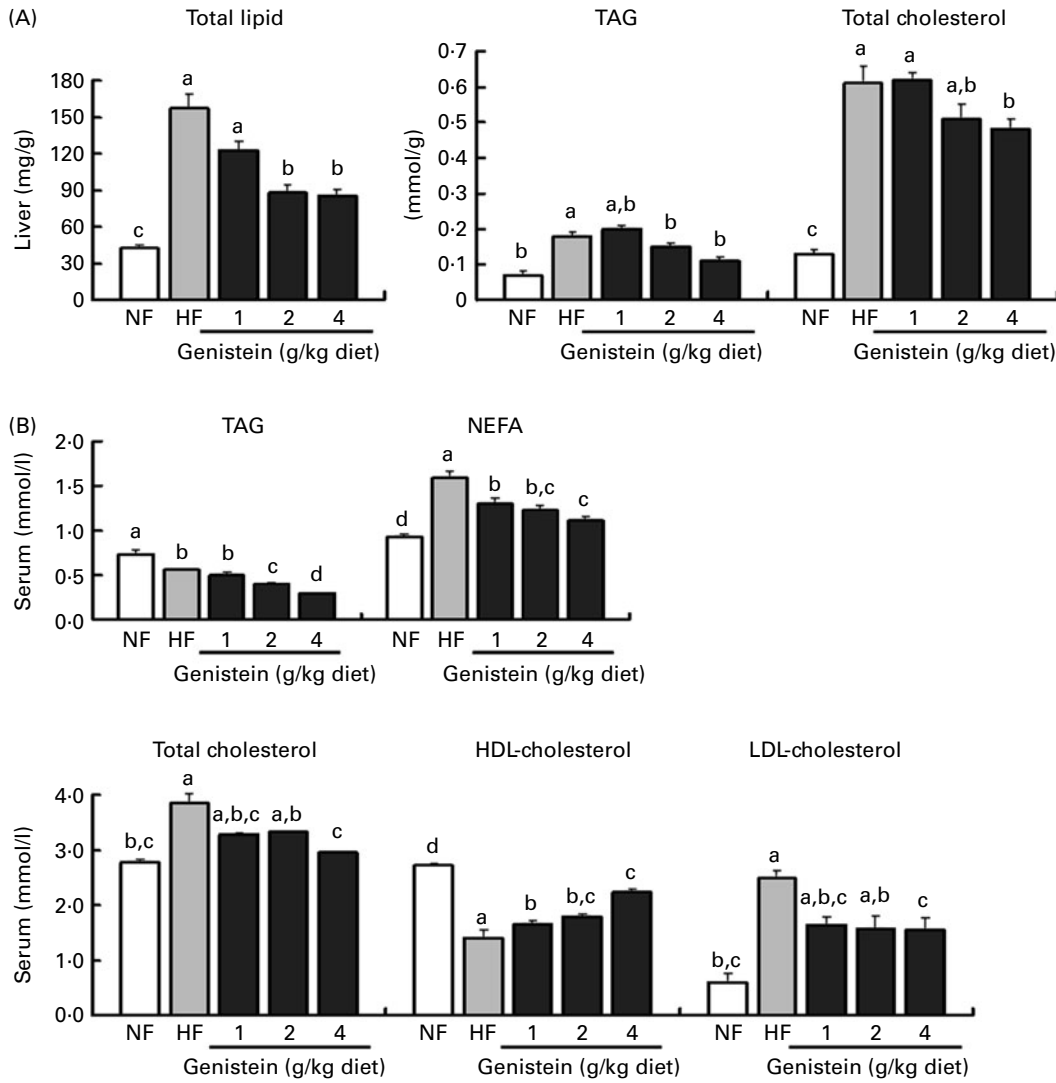
(Mean values with their standard errors,  $n$  18)

	Control				HF diet supplemented with genistein					
	NF		HF		Genistein (1 g/kg diet)		Genistein (2 g/kg diet)		Genistein (4 g/kg diet)	
	Mean	SE	Mean	SE	Mean	SE	Mean	SE	Mean	SE
Body weight (g)	26.8 <sup>c</sup>	0.4	30.5 <sup>a</sup>	1.0	28.7 <sup>b</sup>	0.7	25.5 <sup>c</sup>	0.3	23.4 <sup>d</sup>	0.2
Food intake (g/d)	4.1	0.1	3.8	0.1	4.1	0.2	4.1	0.1	3.8	0.1
Perirenal fat pads (mg)	146 <sup>b,c</sup>	22	293 <sup>a</sup>	43	171 <sup>b</sup>	11	108 <sup>c,d</sup>	14	60 <sup>d</sup>	4
Perirenal fat pads (mg/100 g BW)	539 <sup>b,c</sup>	75	1062 <sup>a</sup>	138	619 <sup>b</sup>	38	364 <sup>c,d</sup>	36	255 <sup>d</sup>	18
Visceral fat pads (mg)	301 <sup>b</sup>	33	786 <sup>a</sup>	95	615 <sup>c</sup>	43	394 <sup>c</sup>	37	263 <sup>c</sup>	12
Visceral fat pads (mg/100 g BW)	1155 <sup>b</sup>	114	2392 <sup>a</sup>	256	2220 <sup>a</sup>	134	1523 <sup>b</sup>	119	1112 <sup>b</sup>	50

HF, high fat; NF, normal fat.

<sup>a,b,c,d</sup> Mean values within a row with unlike superscript letters were significantly different (Duncan's test;  $P < 0.05$ ).

\* The change in BW, food intake and fat mass in mice fed on NF diet, HF diet and HF diet supplemented with genistein (1, 2 and 4 g/kg diet) is given.



**Fig. 1.** Serum and liver lipid profiles altered by genistein supplementation. Lipid profiles in (A) liver and (B) serum of mice fed on normal-fat (NF) diet, high-fat (HF) diet and HF diet supplemented with genistein (1, 2 and 4 g/kg diet). All data are indicated as means with their standard errors ( $n$  18 per diet group). <sup>a,b,c</sup> Mean values with unlike letters were significantly different (Duncan's test;  $P < 0.05$ ).

(38 %,  $P < 0.05$ ) and HDL-cholesterol (49 %,  $P < 0.05$ ) levels than mice fed on the NF diet. These results were reversed principally by genistein supplementation (4 g/kg diet) ( $P < 0.05$ ). Hepatic total lipid, TAG and cholesterol were increased by 275, 157 and 369 % in the HF diet-fed mice, respectively, than in the NF diet-fed mice ( $P < 0.05$ ). These increments were lowered primarily by genistein supplementation (4 g/kg diet) ( $P < 0.05$ ).

#### Histological analysis and injury markers in liver

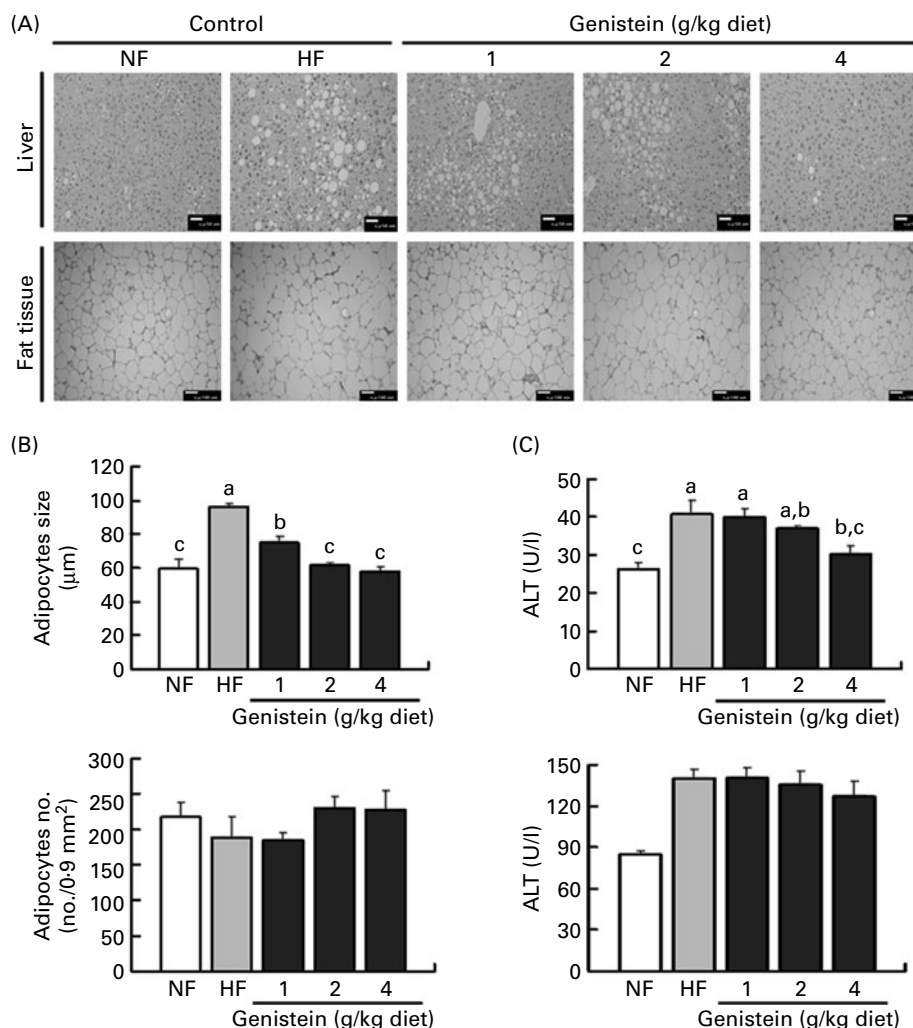
As shown in Fig. 2(A), the liver histology degree assay revealed that the HF diet increased hepatocellular macrovesicular vacuolation as a result of lipid accumulation, swollen hepatocytes and stimulated hydropic degeneration. These changes were ameliorated by genistein supplementations in a dose-dependent manner.

When liver specimens were graded as 0, 1, 2 and 3 according to the percentage of hepatic fat droplets<sup>(25,26)</sup>, the liver of genistein supplementation (4 g/kg diet)-fed mice displayed

a score that was similar to that displayed by the liver of the NF diet-fed mice. These results showed a similar pattern in serum ALT levels, but not in AST levels, which is associated with the evidence that ALT, but not AST, has a positive relationship with hepatic lipid accumulation<sup>(28)</sup>. Actually, ALT (56 %,  $P < 0.05$ ) was elevated in mice fed on the HF diet, and this elevation was again restored in mice fed on a genistein supplementation diet (4 g/kg diet) to the degree observed in mice fed on the NF diet ( $P < 0.05$ ). However, AST was not altered by both the HF diet and genistein supplementation (Fig. 2(C)).

#### Histological analysis of adipose tissue

Our stereological examination of adipocytes showed that HF diet-induced hypertrophy (61 %,  $P < 0.05$ ), i.e. enlargement of adipocytes, was a major contributor to the striking increase in visceral fat mass that was observed in mice fed on the HF diet (Fig. 2(A)), and this morphology was normalised by genistein supplementation in a dose-dependent manner



**Fig. 2.** Histological analysis of liver and adipose tissue. The liver and adipose tissues of mice fed on normal-fat (NF) diet, high-fat (HF) diet and HF diet supplemented with genistein (1, 2 and 4 g/kg diet) were stained via haematoxylin–eosin staining (four or five animals per diet group) for histological analysis. (A) Microscopic picture of liver (original magnification, 200 $\times$ ; scale bar, 50  $\mu$ m) and adipose tissue (original magnification, 100 $\times$ ; scale bar, 100  $\mu$ m); (B) adipocyte numbers and sizes ( $n$  4) based on histological examination; (C) aspartate aminotransferase (AST) and alanine aminotransferase (ALT) for determining liver dysfunction ( $n$  6 per diet group). All data are indicated as means with their standard errors. <sup>a,b,c</sup>Mean values with unlike letters were significantly different (Duncan's test;  $P < 0.05$ ).

(Fig. 2(B)) ( $P < 0.05$ ). However, the HF diet and genistein supplementation did not influence the hyperplasia of adipocytes, i.e. increase in adipocyte number (Fig. 2(B)).

#### Genes involved in fatty acid $\beta$ -oxidation and adipogenesis in adipose tissue

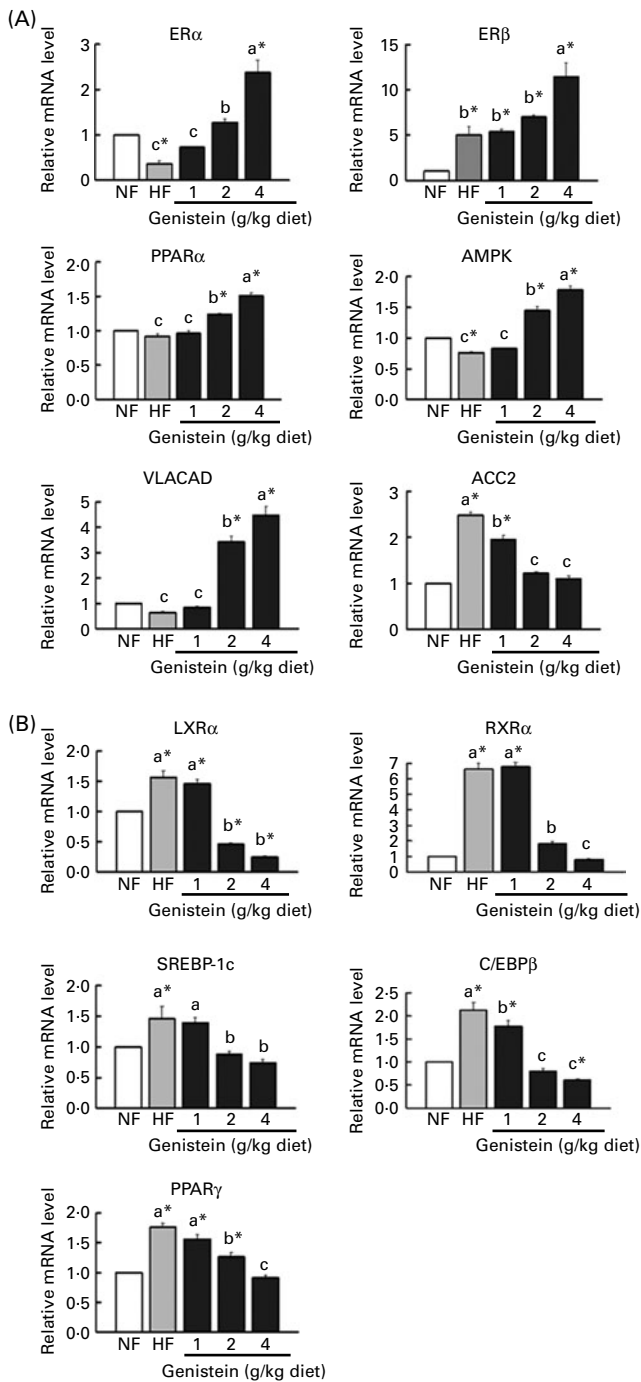
The morphological change in visceral fat may be associated with the imbalanced harmony of genes involved in fatty acid  $\beta$ -oxidation and adipogenesis.

As shown in Fig. 3(A), mice fed on the HF diet evidenced lower levels of expression of genes that activate fatty acid  $\beta$ -oxidation, including ER $\alpha$  and 5'-AMP-activated protein kinase ( $P < 0.05$ ). However, genistein supplementation (2 and 4 g/kg diet) reversed these alterations and augmented the expressions of these genes, which led to the normalisation of the expression of ACC2, an inhibitor of fatty acid  $\beta$ -oxidation<sup>(29)</sup>. Other activators of fatty acid  $\beta$ -oxidation,

PPAR $\alpha$  and its target gene very long-chain acyl CoA dehydrogenase<sup>(30)</sup>, were also augmented in mice fed on the genistein supplementation diet (2 and 4 g/kg diet), but not on an HF diet, than in those fed on the NF diet ( $P < 0.05$ ). Interestingly, ER $\beta$  was increased in mice fed on the HF diet, which may be associated with compensatory action regarding the reduction of ER $\alpha$  observed in ER $\alpha$ -null mice<sup>(31)</sup>.

On the other hand, mice fed on the HF diet evidenced 1.5–6.6-fold higher levels of expression of lipogenic or adipogenic transcription factors, including RXR $\alpha$ , LXR $\alpha$ , SREBP-1c, C/EBP $\beta$  and PPAR $\gamma$ , than those fed on the NF diet ( $P < 0.05$ ). However, genistein supplementation (2 and 4 g/kg diet) normalised or further down-regulated these alternations ( $P < 0.05$ ) (Fig. 3(B)).

Considering these results, genistein supplementation (2 and 4 g/kg diet) appears to reduce fat deposition, via the activation of fatty acid  $\beta$ -oxidation or the inhibition of adipogenesis and lipogenesis.



**Fig. 3.** Alteration of adipocyte metabolism by genistein supplementation. (A) mRNA levels of genes involved in fatty acid  $\beta$ -oxidation, oestrogen receptor (ER) $\alpha$ , ER $\beta$ , PPAR $\alpha$ , 5'-AMP-activated protein kinase (AMPK), very long-chain acyl CoA dehydrogenase (VLACAD) and acetyl CoA carboxylase (ACC)2. (B) mRNA levels of genes involved in adipogenesis, liver X receptor (LXR) $\alpha$ , sterol-regulatory element-binding protein (SREBP)-1c, CCAAT/enhancer-binding protein (C/EBP) $\beta$ , PPAR $\gamma$  and retinoid X receptor (RXR) $\alpha$ . Data are expressed as means with their standard errors ( $n$  3–5). mRNA levels were determined via real-time RT-PCR, and normalised to mRNA expression of  $\beta$ -actin, where the values for the normal-fat (NF) diet were set at 1.0. <sup>a,b,c</sup> Mean values with unlike letters were significantly different (Duncan's test;  $P < 0.05$ ). \*Mean values were significantly different from those of the control (NF) group (Dunnett's test;  $P < 0.05$ ). HF, high fat.

### TNF- $\alpha$ , leptin and adiponectin

Adipose tissues release a variety of adipocytokines, including TNF $\alpha$ , leptin and adiponectin, which are associated with hepatic insulin resistance, inflammation and fibrogenesis.

Among them, TNF $\alpha$ , a stimulator of hepatic fibrogenesis, inflammation<sup>(3)</sup> and insulin resistance<sup>(6)</sup>, was augmented by a 3.9-fold level of expression in mice fed on the HF diet than in mice fed on the NF diet, but was again reduced by genistein supplementation in a dose-dependent manner ( $P < 0.05$ ) (Fig. 4). This reduction may be attributable to the increase in the expression of adiponectin, which functions as an anti-fibrogenic and anti-inflammatory cytokine. Adiponectin expression was reduced by 1.2-fold in mice fed on the HF diet than in those fed on the NF diet, but was increased by genistein supplementation (2 and 4 g/kg diet) than by the NF diet ( $P < 0.05$ ) (Fig. 4).

Unexpectedly, the expression of leptin, an inhibitor of hepatic TAG synthesis<sup>(8,10)</sup>, was down-regulated via genistein supplementation ( $\geq 1$  g/kg diet) than by the HF diet (Fig. 4), which may be related to the reduction of fat mass or the impairment of insulin signalling by genistein supplementation, considering that genistein operates as a tyrosine kinase inhibitor<sup>(32)</sup>.

Collectively, the progress of simple steatosis into non-alcoholic steatohepatitis may be blocked through the suppression of TNF $\alpha$  and the augmentation of adiponectin by genistein supplementation.

### Correlation between hepatic steatosis and non-alcoholic fatty liver disease risk factors

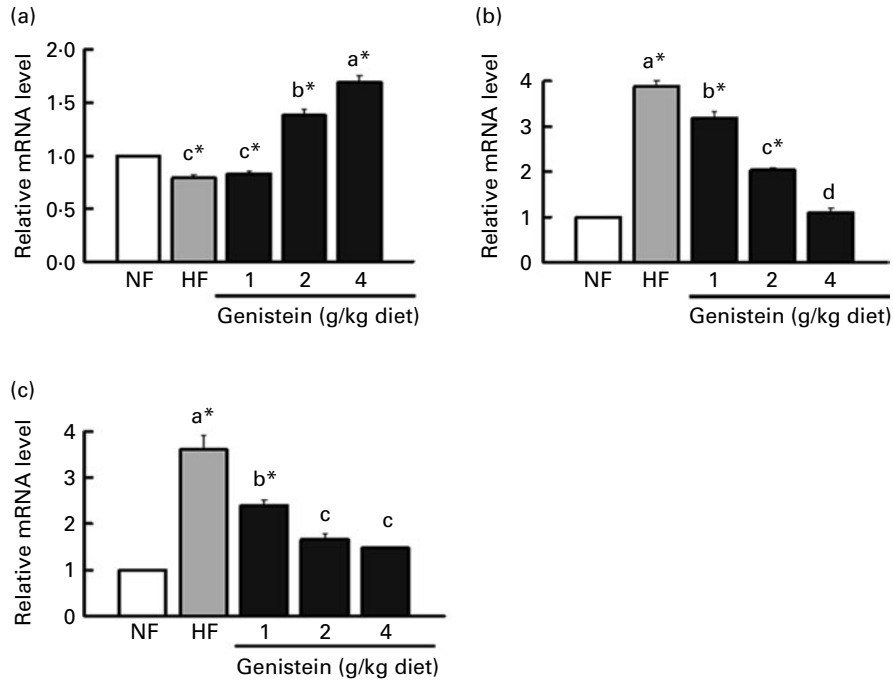
In the linear regression analysis (Table 2), BW, fat mass, adipocyte size, LDL-cholesterol, leptin and TNF $\alpha$  were correlated positively with hepatic steatosis, whereas HDL-cholesterol was correlated negatively with hepatic steatosis.

Among them, the visceral fat (Pearson's correlation coefficient  $R$  0.77) and proinflammatory cytokine TNF $\alpha$  (Pearson's correlation coefficient  $R$  0.62) were the strongest risk factors in NAFLD development, and these findings suggest that the inhibitory effects of genistein on NAFLD may originate principally from the diminution of visceral fat mass and the reduction of inflammation.

### Discussion

In the present study, C57BL/6J mice fed on the HF diet gained BW, increased fat mass, and evidenced elevated levels of serum and liver lipids ( $P < 0.05$ ). The increase in fat mass is attributable to the acceleration of lipogenic or adipogenic processes via ACC2, LXR $\alpha$ , SREBP-1c, PPAR $\gamma$  and RXR $\alpha$ , or the inhibition of the catabolic process via ER $\alpha$  and 5'-AMP-activated protein kinase. Moreover, the consumption of an HF diet up-regulated the expression of proinflammatory TNF $\alpha$  and down-regulated the expression of anti-inflammatory adiponectin.

These physiological and molecular changes induced features of NAFLD (Fig. 2(A)), including macrovesicular hepatocellular vacuolation, hepatocyte swelling and hydropic degeneration, along with a significant elevation of the liver disease marker, ALT (Fig. 2(C)). The HF diet-induced



**Fig. 4.** Regulation of (a) adiponectin, (b) leptin and (c) TNF $\alpha$  by genistein supplementation. mRNA levels of adiponectin, leptin, TNF $\alpha$  in the adipose tissues of mice fed on normal-fat (NF) diet, high-fat (HF) diet and HF diet supplemented with genistein (1, 2 and 4 g/kg diet). Data are expressed as means with their standard errors ( $n$  3–5). mRNA levels were determined with real-time RT-PCR, and normalised to mRNA expression of  $\beta$ -actin, where the values for the NF diet were set at 1.0. <sup>a,b,c</sup> Mean values with unlike letters were significantly different (Duncan's test;  $P < 0.05$ ). \* Mean values are significantly different from those of the control (NF) group (Dunnett's test;  $P < 0.05$ ).

alterations run parallel with the evidence that high fat contributes to the progression of NAFLD in either obese rats with preexisting steatosis or normal human subjects without steatosis<sup>(33)</sup>.

However, these unfortunate features were reversed by supplementing genistein-containing diet, 2 and 4 g/kg diet, but not 1 g/kg diet ( $P < 0.05$ ). Especially, genistein supplementation (2 and 4 g/kg diet) led to BW losses that were higher than those observed with the NF diet. This result was similar to those observed in female and male C57BL/6J mice that had received daily oral doses of genistein (200 000  $\mu$ g/kg BW)<sup>(12)</sup>,

even if the dose (approximately 330 000–400 000  $\mu$ g/kg BW) of genistein utilised in the present study was slightly higher. This loss of BW resulted from a remarkable reduction of fat mass, but not from toxicity of genistein, because genistein did not change skeletal muscle weight or affect testis development at any concentration<sup>(12)</sup>. In the present study, skeletal muscle or testis weight was not altered by genistein supplementation.

In addition, our findings coincided with the outputs of plenty of studies: a 0.1% isoflavone mixture including genistein, daidzein and glycitein has been shown to reduce BW in lean and obese male spontaneously hypertensive/N rats<sup>(34)</sup>; the consumption of a casein-based diet supplemented with pure genistein for 21 d reduced the contents of blood and liver TAG in rats<sup>(35)</sup>; and genistein (2/kg diet) inhibited hepatic fat accumulation in obese C57BL/6J mice<sup>(14)</sup>. These anti-steatotic or hypolipidaemic effects of genistein may be attributed to the increase in hepatic LDL receptor activity<sup>(36)</sup>, the inhibition of hepatic glucose conversion to lipids<sup>(37)</sup> or the up-regulation of hepatic catabolic genes including uncoupling protein-2, PPAR $\gamma$  coactivator-1 and medium-chain acyl-CoA dehydrogenase, as shown in our previous study<sup>(14)</sup>.

However, recent studies have shown that NAFLD and its necroinflammatory form, non-alcoholic steatohepatitis, are closely associated with abnormal visceral adiposity, adipose tissue inflammation<sup>(2)</sup> and a variety of adipocytokines (leptin, adiponectin and TNF $\alpha$ )<sup>(3)</sup>. An epidemiological research indicated that Asians have a prevalence of NAFLD (16–42% by imaging modalities and 15–39% of liver biopsies) that is similar to that exhibited by North Americans and Europeans, despite the smaller BMI values than are observed in North Americans and

**Table 2.** Correlation between hepatic steatosis and non-alcoholic fatty liver disease-related parameters

Variable	Linear regression analysis ( $r^2$ )	Pearson's coefficient analysis ( $R$ )
Body weight (g)	0.19*	0.48*
Perirenal fat weight (mg)	0.17*	0.45*
Visceral fat weight (mg)	0.57***	0.77***
Visceral adipocyte size ( $\mu$ m)	0.26**	0.54**
Serum NEFA (mmol/l)	0.11	0.4
Serum TAG (mmol/l)	0.0002	0.23
Serum total cholesterol (mmol/l)	0.06	0.33
Serum LDL-cholesterol (mmol/l)	0.30*	0.60*
Serum HDL-cholesterol (mmol/l)	0.41**	-0.67**
Adiponectin relative mRNA level	0.10	-0.39
Leptin relative mRNA level	0.48***	0.72***
TNF $\alpha$ relative mRNA level	0.65***	0.62***

\*  $P < 0.05$ , \*\*  $P < 0.01$  and \*\*\*  $P < 0.001$  indicate significant correlation with hepatic steatosis.

Europeans. The reason is that Asians have a high proportion of central obesity than Europeans<sup>(38)</sup>.

Indeed, in our regression analysis between NAFLD-related parameters and NAFLD, visceral fat mass was the first risk factor of NAFLD. By the way, in the present study, phytoestrogen genistein supplementation (2 and 4 g/kg diet) reduced visceral fat mass (mg/100 g BW) (Table 1), which is consistent with the results of other studies; genistein reduced fat mass in ovariectomised female mice and inhibited adipocyte differentiation in 3T3-L1 cells<sup>(39)</sup>.

This reduction of visceral fat mass resulted from the activation of fatty acid  $\beta$ -oxidation and the inhibition of adipogenesis or lipogenesis (Fig. 3). Genistein (2 and 4 g/kg diet)-augmented ER $\alpha$  and ER $\beta$ , a major target gene of genistein, increased its target gene PPAR $\alpha$  expression, which stimulates mitochondrial fatty acid  $\beta$ -oxidation<sup>(30)</sup> through acyl CoA synthetase, carnitine palmitoyltransferase-I and VLCAD. Indeed, the expression of very long-chain acyl CoA dehydrogenase was augmented by genistein supplementation (2 and 4 g/kg diet) ( $P < 0.05$ ). Moreover, genistein supplementation (2 and 4 g/kg diet) enhanced the expression of 5'-AMP-activated protein kinase responsible for the inactivation of ACC<sup>(40,41)</sup>. ACC provides malonyl CoA for fatty acid synthesis and inhibits carnitine palmitoyltransferase-1 that transports fatty acids into mitochondria for  $\beta$ -oxidation<sup>(41)</sup>. Interestingly, the consumption of the HF diet up-regulated the expression of ER $\beta$ , unlike ER $\alpha$ , which appears to be a compensatory mechanism for the down-regulation of ER $\alpha$ . This compensatory mechanism has also been shown in ER $\alpha$ -knockout mice<sup>(31)</sup>.

Genistein (2 and 4 g/kg diet) also inhibited a host of adipogenic genes, including LXR $\alpha$ , SREBP1c, C/EBP $\beta$  and PPAR $\gamma$ . Among them, LXR $\alpha$  is a central regulator of cholesterol and lipid homeostasis via activation of SREBP-1c, which has the binding sites of RXR/LXR in its promoter<sup>(42)</sup>. Activated SREBP-1c is translocated into the nucleus and binds to specific response elements on the promoter of lipogenic and adipogenic genes, such as ACC, fatty acid synthetase, stearoyl CoA desaturase-I, LDL receptor and C/EBP $\beta$ <sup>(43,44)</sup>.

Until now, the effects of genistein on LXR $\alpha$  and SREBP-1c remain controversial. For instance, 10  $\mu$ M genistein inhibited SREBP-1c processing and SREBP-1c downstream genes including fatty acid synthetase, stearoyl CoA desaturase-I, ACC1 and ACC2<sup>(45)</sup>, whereas 20  $\mu$ M genistein enhanced SREBP maturation in HepG2 cells<sup>(46)</sup>. Thus, our findings will be a useful direction in questioning the effects of isoflavones on LXR-SREBP-1c. Additionally, the expressions of C/EBP $\beta$ , as a consequence of the down-regulation of SREBP-1c, were reduced, and consequently, the expression of PPAR $\gamma$  was also down-regulated (Fig. 3). It may be associated with the evidence that C/EBP $\beta$  can bind to C/EBP-regulatory elements in PPAR $\gamma$ 2<sup>(47)</sup> or dislodge histone deacetylase-1 from the promoter of C/EBP $\alpha$ , a potent PPAR $\gamma$  inducer<sup>(48)</sup>. These results were analogous to other evidence showing that 100  $\mu$ M genistein blocked the DNA binding of C/EBP $\beta$  through the increase in the C/EBP homologous protein, and subsequently prevented C/EBP $\alpha$  and PPAR $\gamma$  protein expression in 3T3-L1 cells<sup>(49)</sup>. Furthermore, genistein-reduced RXR $\alpha$  may hamper the transactivation of LXR $\alpha$  and PPAR $\gamma$ , because LXR and PPAR can recruit RNA polymerase II after forming heterodimers with RXR $\alpha$ <sup>(50)</sup>.

On the other hand, the reduction of TNF $\alpha$  expression, the second strong predictor of NAFLD in our regression analysis, is likely to result from the enhancement of anti-inflammatory adiponectin expression by genistein supplementation (2 and 4 g/kg diet). TNF $\alpha$  has been shown to interfere with insulin signalling in the liver and adipose tissue<sup>(6)</sup>, thereby favouring hepatic steatosis, inflammation and hepatic mitochondrial swelling<sup>(51)</sup>. By the way, adiponectin has been shown to prevent NF $\kappa$ B<sup>(52)</sup> or macrophages<sup>(53)</sup> from generating TNF $\alpha$ . Our findings were consistent with the evidences that non-alcoholic steatohepatitis model rats or mice receiving genistein evidenced reductions in plasma TNF $\alpha$  levels<sup>(54,55)</sup>.

Unexpectedly, in the present study, the HF diet-increased leptin was normalised by genistein supplementation ( $\geq 1$  g/kg diet) (Fig. 3). This may be attributable to the reduction of fat mass or impairment of insulin signalling<sup>(32)</sup>. In many studies, the secretion and synthesis of leptin were stimulated by insulin-mediated GLUT and glucose<sup>(56,57)</sup>. Thus, genistein, which functions as a tyrosine kinase inhibitor, appears to inhibit the leptin expression by interfering with insulin signalling. Indeed, adult male rats receiving genistein (5 mg/kg BW) evidenced the reduction of blood leptin concentrations<sup>(32)</sup>.

Taken together, these data suggest that genistein (2 and 4 g/kg diet) might prevent NAFLD via the diminution of visceral fat mass and the regulation of adipocytokines. Additionally, our findings suggest a novel mechanism that gives the answer about the manner in which genistein inhibits NAFLD via the regulation of visceral fat metabolism, such as the inhibition of LXR $\alpha$ -RXR $\alpha$ -SREBP-1c or the activation of adiponectin, because there is little information about the action of genistein on LXR $\alpha$ , RXR $\alpha$  and adiponectin. Furthermore, the interpretation of our findings may be clinically applicable to human NAFLD, as C57BL/6J mice have a phenotype similar to that of human subjects. For example, they readily exhibit obesity, hyperinsulinaemia, hyperglycaemia and hypertension under *ad libitum* access to a HF diet, but maintain lean or normal conditions under restriction to a low-fat chow diet<sup>(15-17)</sup>, as is the case in human subjects.

#### Acknowledgements

There are no conflicts of interest. The present study was conducted with the collaboration and financial support of the Department of Food and Nutrition and the Department of the Veterinary Public Health in Seoul National University. M.-H. K. contributed to the conception and design, data analysis and interpretation, and manuscript writing; K.-S. K. contributed to the financial support, provision of the study material, administrative support and final approval of the manuscript; Y.-S. L. contributed to the conception and design, financial support, provision of the study material, administrative support and final approval of the manuscript.

#### References

- Mulhall BP, Ong JP & Younossi ZM (2002) Non-alcoholic fatty liver disease: an overview. *J Gastroenterol Hepatol* **17**, 1136-1143.
- Targher G, Bertolini L, Scala L, *et al.* (2005) Non-alcoholic hepatic steatosis and its relation to increased plasma biomarkers of



- inflammation and endothelial dysfunction in non-diabetic men. Role of visceral adipose tissue. *Diabet Med* **22**, 1354–1358.
3. Ikejima K, Okumura K, Kon K, *et al.* (2007) Role of adipocytokines in hepatic fibrogenesis. *J Gastroenterol Hepatol* **22**, Suppl. 1, S87–S92.
  4. Weisberg SP, McCann D, Desai M, *et al.* (2003) Obesity is associated with macrophage accumulation in adipose tissue. *J Clin Invest* **112**, 1796–1808.
  5. Zhang HH, Halbleib M, Ahmad F, *et al.* (2002) Tumor necrosis factor- $\alpha$  stimulates lipolysis in differentiated human adipocytes through activation of extracellular signal-related kinase and elevation of intracellular cAMP. *Diabetes* **51**, 2929–2935.
  6. Cai D, Yuan M, Frantz DF, *et al.* (2005) Local and systemic insulin resistance resulting from hepatic activation of IKK-beta and NF-kappaB. *Nat Med* **11**, 183–190.
  7. Feldstein AE, Werneburg NW, Canbay A, *et al.* (2004) Free fatty acids promote hepatic lipotoxicity by stimulating TNF- $\alpha$  expression via a lysosomal pathway. *Hepatology* **40**, 185–194.
  8. Huang W, Dedousis N, Bandi A, *et al.* (2006) Liver triglyceride secretion and lipid oxidative metabolism are rapidly altered by leptin *in vivo*. *Endocrinology* **147**, 1480–1487.
  9. You M, Considine RV, Leone TC, *et al.* (2005) Role of adiponectin in the protective action of dietary saturated fat against alcoholic fatty liver in mice. *Hepatology* **42**, 568–577.
  10. Gallardo N, Bonzon-Kulichenko E, Fernandez-Agullo T, *et al.* (2007) Tissue-specific effects of central leptin on the expression of genes involved in lipid metabolism in liver and white adipose tissue. *Endocrinology* **148**, 5604–5610.
  11. Xu A, Wang Y, Keshaw H, *et al.* (2003) The fat-derived hormone adiponectin alleviates alcoholic and nonalcoholic fatty liver diseases in mice. *J Clin Invest* **112**, 91–100.
  12. Penza M, Montani C, Romani A, *et al.* (2006) Genistein affects adipose tissue deposition in a dose-dependent and gender-specific manner. *Endocrinology* **147**, 5740–5751.
  13. Tham DM, Gardner CD & Haskell WL (1998) Clinical review 97: potential health benefits of dietary phytoestrogens: a review of the clinical, epidemiological, and mechanistic evidence. *J Clin Endocrinol Metab* **83**, 2223–2235.
  14. Lee YM, Choi JS, Kim MH, *et al.* (2006) Effects of dietary genistein on hepatic lipid metabolism and mitochondrial function in mice fed high-fat diets. *Nutrition* **22**, 956–964.
  15. Surwit RS, Feinglos MN, Rodin J, *et al.* (1995) Differential effects of fat and sucrose on the development of obesity and diabetes in C57BL/6J and A/J mice. *Metabolism* **44**, 645–651.
  16. Surwit RS, Kuhn CM, Cochrane C, *et al.* (1988) Diet-induced type II diabetes in C57BL/6J mice. *Diabetes* **37**, 1163–1167.
  17. Mills E, Kuhn CM, Feinglos MN, *et al.* (1993) Hypertension in CB57BL/6J mouse model of non-insulin-dependent diabetes mellitus. *Am J Physiol* **264**, R73–R78.
  18. Reeves PG, Nielsen FH & Fahey GC Jr (1993) AIN-93 purified diets for laboratory rodents: final report of the American Institute of Nutrition *ad hoc* writing committee on the reformulation of the AIN-76A rodent diet. *J Nutr* **123**, 1939–1951.
  19. Adlercreutz H, Markkanen H & Watanabe S (1993) Plasma concentrations of phyto-oestrogens in Japanese men. *Lancet* **342**, 1209–1210.
  20. King RA & Bursill DB (1998) Plasma and urinary kinetics of the isoflavones daidzein and genistein after a single soy meal in humans. *Am J Clin Nutr* **67**, 867–872.
  21. Setchell KD, Zimmer-Nechemias L, Cai J, *et al.* (1997) Exposure of infants to phyto-oestrogens from soy-based infant formula. *Lancet* **350**, 23–27.
  22. Wanger JD, Cafalu WT, Anthony MS, *et al.* (1997) Dietary soy protein and estrogen replacement therapy improve cardiovascular risk factors and decrease aortic cholesteryl ester content in ovariectomized cynomolgus monkeys. *Metabolism* **46**, 698–705.
  23. Dang ZC, Audinot V, Papapoulos SE, *et al.* (2003) Peroxisome proliferator-activated receptor gamma (PPARgamma) as a molecular target for the soy phytoestrogen genistein. *J Biol Chem* **278**, 962–967.
  24. Bligh EG & Dyer WJ (1959) A rapid method of total lipid extraction and purification. *Can J Biochem Physiol* **37**, 911–917.
  25. Bruno RS, Dugan CE, Smyth JA, *et al.* (2008) Green tea extract protects leptin-deficient, spontaneously obese mice from hepatic steatosis and injury. *J Nutr* **138**, 323–331.
  26. Tsochatzis E, Papatheodoridis GV, Manesis EK, *et al.* (2007) Hepatic steatosis in genotype 4 chronic hepatitis C is mainly because of metabolic factors. *Am J Gastroenterol* **102**, 634–641.
  27. Ashwell M, Priest P, Bondoux M, *et al.* (1976) Human fat cell sizing – a quick, simple method. *J Lipid Res* **17**, 190–192.
  28. Schindhelm RK, Diamant M, Dekker JM, *et al.* (2006) Alanine aminotransferase as a marker of non-alcoholic fatty liver disease in relation to type 2 diabetes mellitus and cardiovascular disease. *Diabetes Metab Res Rev* **22**, 437–443.
  29. Abu-Elheiga L, Matzuk MM, Abo-Hashema KA, *et al.* (2001) Continuous fatty acid oxidation and reduced fat storage in mice lacking acetyl-CoA carboxylase 2. *Science* **291**, 2613–2616.
  30. Reddy JK & Hashimoto T (2001) Peroxisomal beta-oxidation and peroxisome proliferator-activated receptor  $\alpha$ : an adaptive metabolic system. *Annu Rev Nutr* **21**, 193–230.
  31. Naaz A, Zakroczymski M, Heine P, *et al.* (2002) Effect of ovariectomy on adipose tissue of mice in the absence of estrogen receptor  $\alpha$  (ER $\alpha$ ): a potential role for estrogen receptor beta (ERbeta). *Horm Metab Res* **34**, 758–763.
  32. Szkudelski T, Nogowski L, Pruszyńska-Oszmialek E, *et al.* (2005) Genistein restricts leptin secretion from rat adipocytes. *J Steroid Biochem Mol Biol* **96**, 301–307.
  33. Carmiel-Haggai M, Cederbaum AI & Nieto N (2005) A high-fat diet leads to the progression of non-alcoholic fatty liver disease in obese rats. *FASEB J* **19**, 136–138.
  34. Ali AA, Velasquez MT, Hansen CT, *et al.* (2004) Effects of soybean isoflavones, probiotics, and their interactions on lipid metabolism and endocrine system in an animal model of obesity and diabetes. *J Nutr Biochem* **15**, 583–590.
  35. Demonty I, Lamarche B, Deshaies Y, *et al.* (2002) Role of soy isoflavones in the hypotriglyceridemic effect of soy protein in the rat. *J Nutr Biochem* **13**, 671–677.
  36. Kirk EA, Sutherland P, Wang SA, *et al.* (1998) Dietary isoflavones reduce plasma cholesterol and atherosclerosis in C57BL/6 mice but not LDL receptor-deficient mice. *J Nutr* **128**, 954–959.
  37. Nogowski L, Mackowiak P, Kandulska K, *et al.* (1998) Genistein-induced changes in lipid metabolism of ovariectomized rats. *Ann Nutr Metab* **42**, 360–366.
  38. Fan JG, Saibara T, Chitturi S, *et al.* (2007) What are the risk factors and settings for non-alcoholic fatty liver disease in Asia-Pacific? *J Gastroenterol Hepatol* **22**, 794–800.
  39. Hwang JT, Park JJ, Shin JJ, *et al.* (2005) Genistein, EGCG, and capsaicin inhibit adipocyte differentiation process via activating AMP-activated protein kinase. *Biochem Biophys Res Commun* **338**, 694–699.
  40. Carlson CA & Kim KH (1973) Regulation of hepatic acetyl coenzyme A carboxylase by phosphorylation and dephosphorylation. *J Biol Chem* **248**, 378–380.
  41. Ruderman N & Prentki M (2004) AMP kinase and malonyl-CoA: targets for therapy of the metabolic syndrome. *Nat Rev Drug Discov* **3**, 340–351.
  42. Repa JJ, Liang G, Ou J, *et al.* (2000) Regulation of mouse sterol regulatory element-binding protein-1c gene (SREBP-1c) by oxysterol receptors, LXRalpha and LXRBeta. *Genes Dev* **14**, 2819–2830.

43. Le Lay S, Lefrere I, Trautwein C, *et al.* (2002) Insulin and sterol-regulatory element-binding protein-1c (SREBP-1C) regulation of gene expression in 3T3-L1 adipocytes. Identification of CCAAT/enhancer-binding protein beta as an SREBP-1C target. *J Biol Chem* **277**, 35625–35634.
44. Shimano H, Yahagi N, Amemiya-Kudo M, *et al.* (1999) Sterol regulatory element-binding protein-1 as a key transcription factor for nutritional induction of lipogenic enzyme genes. *J Biol Chem* **274**, 35832–35839.
45. Shin ES, Lee HH, Cho SY, *et al.* (2007) Genistein downregulates SREBP-1 regulated gene expression by inhibiting site-1 protease expression in HepG2 cells. *J Nutr* **137**, 1127–1131.
46. Mullen E, Brown RM, Osborne TF, *et al.* (2004) Soy isoflavones affect sterol regulatory element binding proteins (SREBPs) and SREBP-regulated genes in HepG2 cells. *J Nutr* **134**, 2942–2947.
47. Elberg G, Gimble JM & Tsai SY (2000) Modulation of the murine peroxisome proliferator-activated receptor gamma 2 promoter activity by CCAAT/enhancer-binding proteins. *J Biol Chem* **275**, 27815–27822.
48. Zuo Y, Qiang L & Farmer SR (2006) Activation of CCAAT/enhancer-binding protein (C/EBP)  $\alpha$  expression by C/EBP beta during adipogenesis requires a peroxisome proliferator-activated receptor-gamma-associated repression of HDAC1 at the C/ebp  $\alpha$  gene promoter. *J Biol Chem* **281**, 7960–7967.
49. Harmon AW, Patel YM & Harp JB (2002) Genistein inhibits CCAAT/enhancer-binding protein beta (C/EBPbeta) activity and 3T3-L1 adipogenesis by increasing C/EBP homologous protein expression. *Biochem J* **367**, 203–208.
50. Chawla A, Repa JJ, Evans RM, *et al.* (2001) Nuclear receptors and lipid physiology: opening the X-files. *Science* **294**, 1866–1870.
51. Higuchi M, Proske RJ & Yeh ET (1998) Inhibition of mitochondrial respiratory chain complex I by TNF results in cytochrome c release, membrane permeability transition, and apoptosis. *Oncogene* **17**, 2515–2524.
52. Ouchi N, Kihara S, Arita Y, *et al.* (2000) Adiponectin, an adipocyte-derived plasma protein, inhibits endothelial NF-kappaB signaling through a cAMP-dependent pathway. *Circulation* **102**, 1296–1301.
53. Yokota T, Oritani K, Takahashi I, *et al.* (2000) Adiponectin, a new member of the family of soluble defense collagens, negatively regulates the growth of myelomonocytic progenitors and the functions of macrophages. *Blood* **96**, 1723–1732.
54. Yalniz M, Bahcecioglu IH, Kuzu N, *et al.* (2007) Preventive role of genistein in an experimental non-alcoholic steatohepatitis model. *J Gastroenterol Hepatol* **22**, 2009–2014.
55. Hasumuma R, Kawaguchi K, Kikuchi S, *et al.* (2007) Effects of isoflavones and soybeans fermented with *Bacillus subtilis* on lipopolysaccharide-induced production of tumor necrosis factor- $\alpha$  and fibrinolysis *in vivo*. *Immunopharmacol Immunotoxicol* **29**, 323–333.
56. Mueller WM, Gregoire FM, Stanhope KL, *et al.* (1998) Evidence that glucose metabolism regulates leptin secretion from cultured rat adipocytes. *Endocrinology* **139**, 551–558.
57. Levy JR & Stevens W (2001) The effects of insulin, glucose, and pyruvate on the kinetics of leptin secretion. *Endocrinology* **142**, 3558–3562.