

## PRODUCT/SERVICE INFORMATION

- Acquire X-ray spectra directly into a Macintosh II from an existing pulse processor with the Spectral Engine from 4pi Analysis, Inc. The Spectral Engine forms the basis for a high performance, Macintosh-based, multichannel analyzer and is an integral component of a low cost qualitative/quantitative X-ray analysis system when used in conjunction with software such as D TSA. Source code is available for system customization. Contact 4pi Analysis - Tel: (919)688-9426, Fax: (919)688-0427.
- Oil contamination in SEMs is effectively stopped by the SEM-CLEAN system. This low cost system is available from Ron Vane at XEI Scientific, 3124 Wessex Way, Redwood City, CA 94061, (415)369-0133.

## POSITIONS AVAILABLE

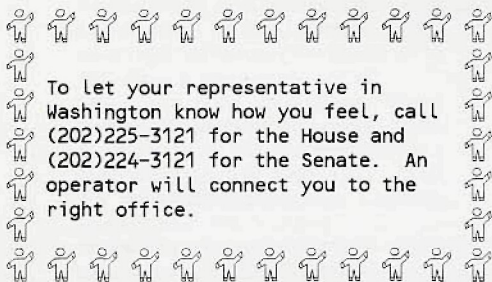
- MIDWEST ELECTRON MICROSCOPE SALES REPRESENTATIVE. Seeking an industrious individual wishing a challenging and very rewarding opportunity. Strong background in SEM/TEM is required. Previous sales experience in not required. Relocation to the Midwest will be considered. Resume to Microscopy Today, Box 122AD.
- McCrone Associates, Inc. is searching for a Materials Scientist for their Midwest Electron Optics Group. Requirements include: MS or Ph.D. in Analytical Chemistry or Materials Science; Minimum of 4-6 years experience in materials characterization; Experience in analytical electron microscopy and light microscopy; Outstanding analytical, interpretive and communication skills. Excellent facilities include JEOL 2000 FX and JEOL 4000 FX AEMs equipped with NORAN EDS systems and GATAN PEELS. FAX resume with references to: Donald A. Brooks, (708)887-7417.
- Microscopy tech position available immediately for person skilled in LM/TEM of biological specimens, using conventional plastic media and immunohistological methods. Experience with autoadiography desirable. Must be relatively independent, conscientious, self-starter, problem solver. Stimulating biomedical research environment, modern facilities, congenial colleagues, excellent benefits. Contact: Dr. Steven J. Fliesler, Bethesda Eye Institute, 3655 Vista Ave., St. Louis, MO 63110; phone (314)577-8259; FAX: (314)773-5297.

## USED EQUIPMENT FOR SALE

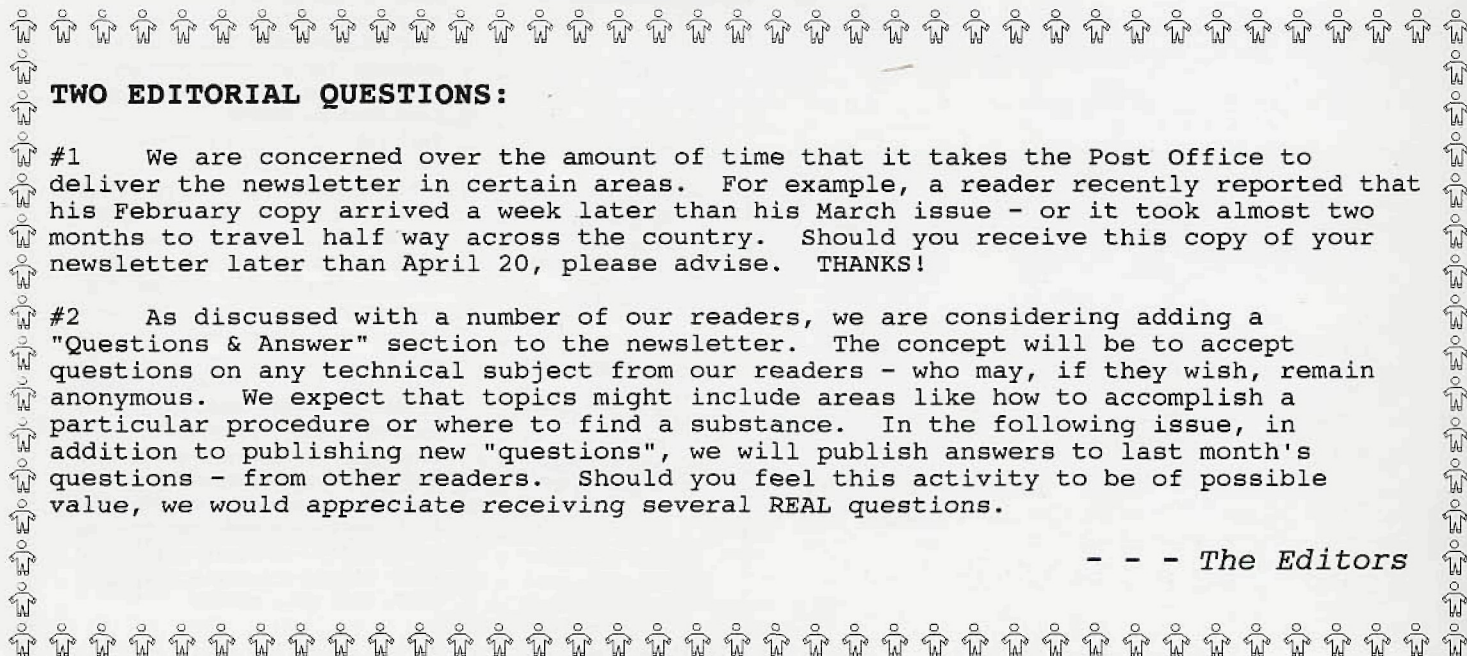
- JEOL JSM-35C SEM w/TN-2000 EDS X-ray analysis system. Includes pumps, manuals, all bells/whistles. Res. to 60 angstroms, Mag. to 180,000X. Excellent condition. \$40K (or best offer). Contact Eric Christoph, Plasma Sciences, Inc. Tel: (703)550-7888.
- SEM COLD STAGE: Hexland Cryotrans CT1000. 1985-new, in like-new condition. Price negotiable. UC Berkeley, EM Lab. Tel: (510)642-2085, Fax: (510)642-4612.
- FREE to good home! Zeiss TEM EM9S-2 (with spare parts). Good working condition. Please move it, because we need the room. Call Debbie Mull: (216)775-8959.

## SITUATIONS WANTED

- Skilled EM technologists and research assistants with backgrounds in the biological or materials fields. Each has completed an intensive two year program emphasizing extensive "hands on" experience in TEM, SEM and OLM - plus background theory. Contact San Joaquin Delta College, Electron Microscopy Program. Tel: (209)747-5284, Fax: (209)474-5649.



To let your representative in Washington know how you feel, call (202)225-3121 for the House and (202)224-3121 for the Senate. An operator will connect you to the right office.



## TWO EDITORIAL QUESTIONS:

#1 We are concerned over the amount of time that it takes the Post Office to deliver the newsletter in certain areas. For example, a reader recently reported that his February copy arrived a week later than his March issue - or it took almost two months to travel half way across the country. Should you receive this copy of your newsletter later than April 20, please advise. THANKS!

#2 As discussed with a number of our readers, we are considering adding a "Questions & Answer" section to the newsletter. The concept will be to accept questions on any technical subject from our readers - who may, if they wish, remain anonymous. We expect that topics might include areas like how to accomplish a particular procedure or where to find a substance. In the following issue, in addition to publishing new "questions", we will publish answers to last month's questions - from other readers. Should you feel this activity to be of possible value, we would appreciate receiving several REAL questions.

- - - The Editors



# JEOL

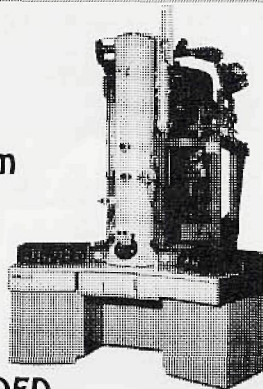


## FOR SALE

### PRE-OWNED **JEM-4000FX TEMSCAN** ANALYTICAL TRANSMISSION ELECTRON MICROSCOPE

#### System Includes:

- STEM System
- Tracor Northern EDS System
- 400 kV
- 0.22nm Res.,  $\pm 30^\circ$  Tilt  
or
- 0.26nm Res.,  $\pm 45^\circ$  Tilt
- Installation Included
- 2 YEAR WARRANTY INCLUDED



This system is being offered by JEOL for the all inclusive price of \$400,000. For further information on the instrument, its history and how you may see the instrument, please call Peter Genovese at the JEOL North American Headquarters in Peabody, MA or your local JEOL Salesman.

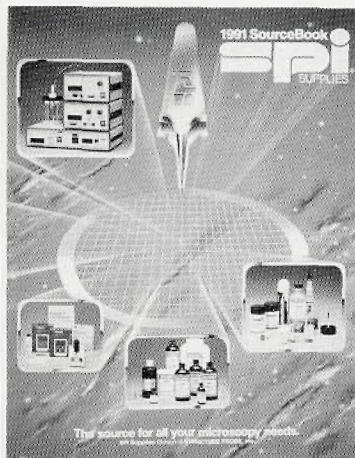
JEOL USA, Inc. • 11 Dearborn Road • Peabody, MA 01960 • 508/535-5900 • FAX 508/535-7741

## Consider the Source.



### For all your microscopy needs.

Call for your SPI Supplies SourceBook.  
Get selection and savings...the SPI way.



- Instruments for specimen preparation
- Sputter Coaters
- Plasma Etchers
- Tweezers and Small Tools
- Grids
- SEM Mounts
- Specimen Preparation supplies
- Chemicals
- Cleaning Supplies
- Photography Supplies
- Microtomy Supplies

Phone us at: **1-800-2424-SPI**

or FAX at: 1-(215)-436-5755

## Service to Spare.

Overloaded? Understaffed?

### Complete Analytical Research Services.

Call for our Guide to Analytical Research Services. Let Structure Probe help you augment and compliment your current laboratory services. Accredited by the American Association for Laboratory Accreditation (A2LA) for all the services listed and by NVLAP in Airborne Asbestos Fiber Analysis (AHERA).

- SEM • TEM • AEM • XPS(ESCA)
- Auger Spectroscopy • PLM
- Ion Milling • Cryo Ultramicrotomy
- Metallography • WDS

**STRUCTURE PROBE®**

SPECIALISTS IN MATERIALS RESEARCH

Call Toll-Free **1-800-2424-SPI**

Convenient locations in and near New York, Long Island, Philadelphia, and Connecticut.



**REVISED ADVERTISING RATES:**

**PRODUCT/SERVICE INFORMATION:** \$250 plus \$5.00 each word over 25.

**POSITIONS AVAILABLE:** \$100 plus \$2.50 each word over 25.

**USED EQUIPMENT FOR SALE:**

**Based upon an asking price of:**

**Less than \$10K:** \$50 plus \$1.50 each word over 25

**Less than \$25K:** \$75 plus \$2.00 each word over 25.

**Less than \$50K:** \$100 plus \$2.50 each word over 25

**More than \$50K:** \$125 plus \$3.00 each word over 25.

**SITUATIONS WANTED:** \$50 plus \$1.50 each word over 25.

**CAMERA-READY COPY:**

**One-Quarter Page:** \$400

(7 1/2" W x 2 1/2" H) or

(4 1/2" W x 3 3/4" H)

**One-Half Page:** \$650

(7 1/2" W x 5" H) or

**Full Page (when available):** \$1,200

**INSERT AND MAILING LIST SERVICE RATES ARE AVAILABLE ON REQUEST**

**MICROSCOPY TODAY**

PO Box 122 - Middleton, WI - 53562-0122  
Tel: (608)836-1970 Fax: (608)836-1969