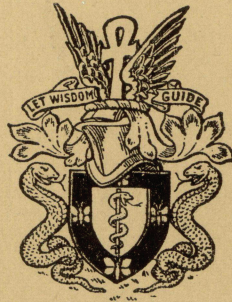


THE JOURNAL
OF
MENTAL SCIENCE
(THE BRITISH JOURNAL OF PSYCHIATRY)



BY AUTHORITY OF
THE ROYAL MEDICO-PSYCHOLOGICAL ASSOCIATION

EDITOR-IN-CHIEF
G. W. T. H. FLEMING

WITH THE ASSISTANCE OF
Alexander Walk (Co-Editor)

L. C. Cook	F. L. Golla	T. F. Main
P. K. McCowan	A. Meyer	R. M. Norman
M. Partridge	W. Linford Rees	B. W. Richards
	W. Warren	

(The above constitute the Journal Committee)

AND

Lord Adrian	C. J. C. Earl
W. Ross Ashby	J. N. P. Moore
Sir F. C. Bartlett	A. A. W. Petrie
Sir W. E. le Gros Clark	Derek Richter
	E. T. O. Slater

LONDON
J. & A. CHURCHILL, LTD

Published Four times Yearly Fifteen Shillings net

THE JOURNAL OF MENTAL SCIENCE

Communications on general editorial matters, including MSS. for publication, books for review and other printed matter, and communications regarding the *Epitome* section, including journals to be abstracted, should be sent to the **Editor-in-Chief, Barnwood House, Gloucester.**

Communications and enquiries regarding sales should be addressed to the Publishers, **Messrs. J. & A. CHURCHILL, Ltd., 104 Gloucester Place, Portman Square, London, W.1;** and those regarding Advertisements to **Aldridge Press Ltd., 27 Chancery Lane, London, W.C.2.**

Details of membership of the Royal Medico-Psychological Association are obtainable from the **Secretary, R.M.P.A., 11 Chandos Street, Cavendish Square, London, W.1.**

THE ROYAL MEDICO-PSYCHOLOGICAL ASSOCIATION PUBLICATIONS

FROM MESSRS. ADLARD & SON, LTD.,
Bartholomew Press, Dorking, Surrey.

Enquiry (History) Form, for use in Mental Hospitals. In three sizes. Prices and specimen forms on application.

FROM MESSRS. J. & A. CHURCHILL, LTD.,
104 Gloucester Place, W.1.

"The Journal of Mental Science." Published four times a year. Price 15/-. Postage extra.

"Recent Progress in Psychiatry." Vol. 2, 1950. Pp. 711. Price 50/-.

Vol. 3, 1959. Pp. 404. Price 50/-.

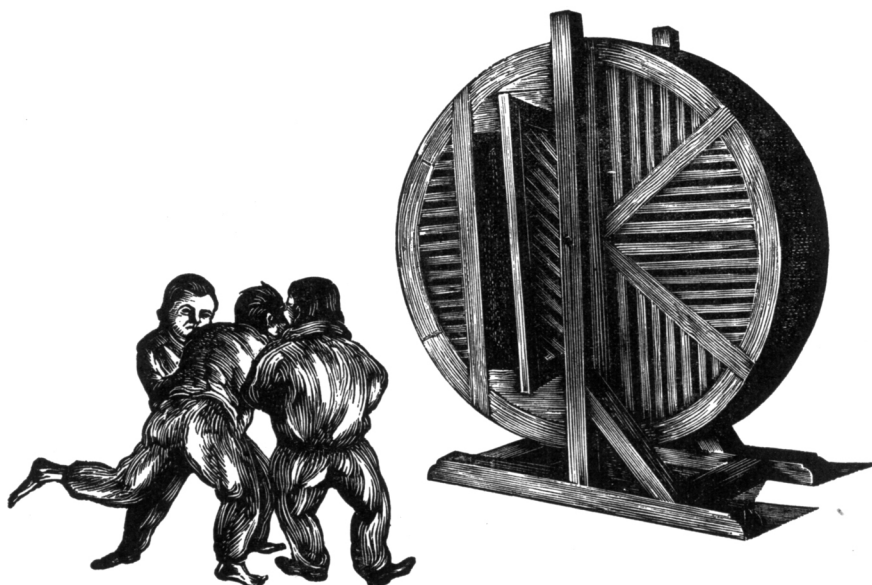
FROM MESSRS. BAILLIÈRE, TINDALL & COX,
8 Henrietta Street, W.C.2.

"Handbook for Mental Nurses." 8th edn. 1954. Price 21/-.

FROM THE SECRETARY, 11 Chandos Street, W.1.

The Charter and By-Laws of the Association. Price 2/-. Postage 1½d.

"Recent Progress in Psychiatry." Vol. 2, 1950 } (at special price to members of R.M.P.A.)
Vol. 3, 1959 }



Squirrel cage used for calming mental patients (18th century). Original wood engraving by John De Pole.

STELAZINE

brand of trifluoperazine

the new psychotropic agent
specific for the
hallucinated, delusional, and
aggressive psychotic.

'Stelazine' is the most active phenothiazine available. It has brought about a return to normal in patients who have not responded to any other form of treatment — including not only other phenothiazines, but also insulin and E.C.T.

FORMULA : 2-trifluoromethyl-10-(3' [1"-methyl piperaziny] -4"-propyl) phenothiazine dihydrochloride.



Smith Kline & French Laboratories Ltd
Coldharbour Lane, London SE5
SZ:PA108

'Stelazine' is a trademark

Acute and chronic psychoses, schizophrenia



- The rapid onset of the psychotropic action of orphenadrine* supplements the more gradual psychic integration caused by reserpine.
- Marked decrease of side-effects.
- Shortened period of treatment.

N.H.S. prices 100 tabl. 18/5

500 tabl. 79/11

Prescribable on E.C. 10.

ELIMIT

(1 mg reserpine and 50 mg orphenadrine hydrochloride)

CAMDEN CHEMICAL COMPANY LTD. LONDON

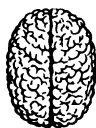


licensee of:

N.V. KONINKLIJKE PHARMACEUTISCHE FABRIEKEN v/h
BROCADES - STHEEMAN & PHARMACIA
AMSTERDAM - HOLLAND

*available as *Disipal*

U.K. Patent Nos. 607,258 and 743,495



**Remarkably safe and
free from toxic effects**

N y d r a n e

n-BENZYL- β -CHLOROPROPIONAMIDE

**in the treatment of Grand-mal
and Psychomotor Epilepsy**

NYDRANE is remarkable in that no toxic or unpleasant side-effects have been experienced with its use



NYDRANE usually makes patients more mentally alert, brighter, and more co-operative, opposing even the soporific action of any other anticonvulsant used



NYDRANE often successfully stabilises the more resistant cases, enabling them to lead a more normal, useful life



NYDRANE tablets are readily accepted and well tolerated



Nydrane tablets each containing 500 mg. *n*-benzyl- β -chloropropionamide, and Nydrane Co. tablets each containing 500 mg. *n*-benzyl- β -chloropropionamide and 20 mg. Phenobarbitone, are available in bottles of 50 and 250, and tins of 1,000 tablets

Prescribable on the N.H.S.

Literature and samples gladly sent on request

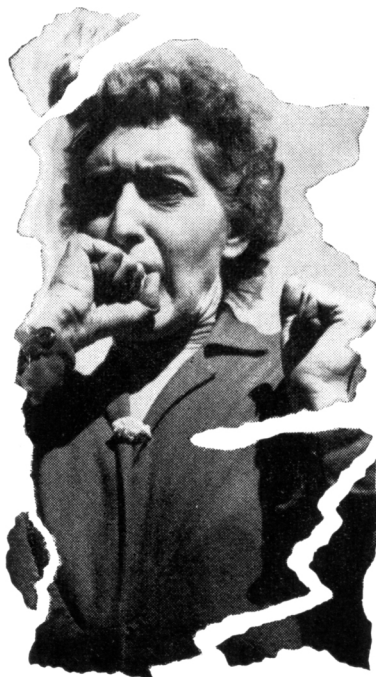


RONA LABORATORIES LTD

12/13 Molyneux Street, London, W.1

AMBassador 4437/8

"the overall picture was a quieter ward with an increase in interest, initiative and occupational capacity." J.MENT.SCI. (1957) 103, 610.



PACATAL

TRADE MARK

Different phenothiazine derivatives exhibit their greatest usefulness in different types of mental disorder and in different types of patient. Accumulated evidence shows that Pacatal is of particular value for:

- RECENT ACUTE SCHIZOPHRENICS
- CHRONIC SCHIZOPHRENICS
- OBSESSIVE-COMPULSIVES
- AGITATED DEPRESSIVES
- SENILE PATIENTS

and in the control of:

Aggression • Impulsiveness • Overactivity

In general, Pacatal tends to produce better results in patients over fifty than in the younger age groups and it has been observed that women often respond better than men.

A notable feature of Pacatal is that patients receiving it are not made drowsy or "flattened". They remain alert and are thus able to co-operate in other forms of treatment.

PRESENTATION

Tablets 25 and 100 mg. in bottles of 50 and 500. Ampoules each containing 50 mg. in 2 ml. in boxes of 10 and 50.



WILLIAM R. WARNER & CO. LTD.
EASTLEIGH, HAMPSHIRE.

PAC389/26

*a new, effective treatment in
a wide range of psychiatric disorders*

Fentazin

PERPHENAZINE

broad-span effectiveness

- *effective in anxiety and tension states*
- *effective in nausea and vomiting*
- *effective in psychoneuroses*
- *effective in psychoses*

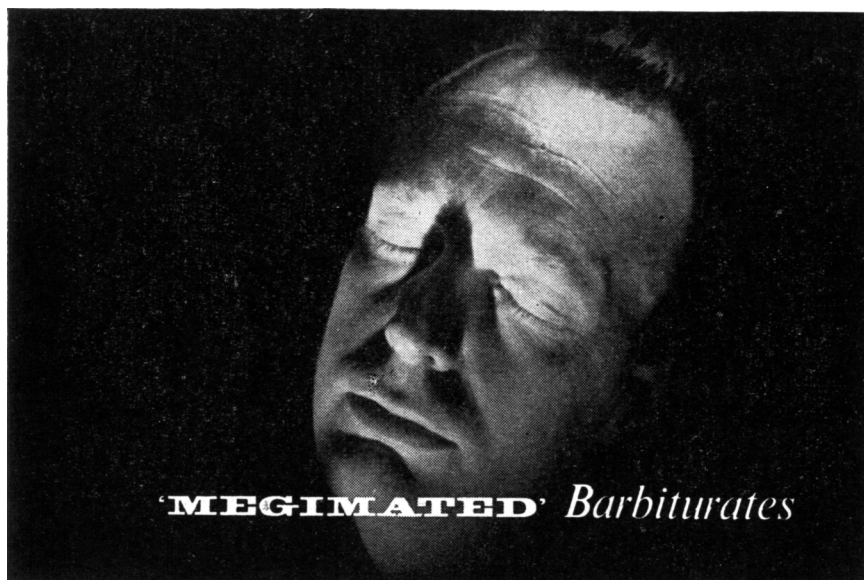
Fentazin is remarkably effective for the treatment of a wide range of psychiatric disorders. Fentazin is several times more active than older phenothiazines, and is effective in proportionately smaller dosage. Side-effects are greatly reduced; indeed, Fentazin in recommended dosage produces virtually no side-effects.

Because it is so safe, Fentazin may be used for the routine management of anxiety and tension states. Because it is so active, it is effective in even severe psychoses. Fentazin safely spans the field from anxiety to schizophrenia. Fentazin tablets contain 2 mg., 4 mg., or 8 mg. perphenazine. Supplied in bottles of 50 and 500 tablets of each strength. Fentazin Injection contains 5 mg. perphenazine in each c.c., supplied in boxes of 5 × 1 c.c. ampoules.

FENTAZIN is a trade mark
AH458



ALLEN & HANBURYS LTD LONDON E2



'MEGIMATED' Barbiturates

Safety in Barbiturate Therapy

*risk of 'accident' from
overdosage virtually eliminated*

Search for a less toxic form for the administration of Barbiturates has shown that the incorporation of 'MEGIMIDE' (Bemegride), while preserving the major therapeutic actions of the barbiturates, significantly modifies their usual toxic manifestations at overdosage levels.

'MEGOBAR'

Trade Mark

providing safer sedation

Tablets each containing:—

Phenobarbitone 30 mg.

'MEGIMIDE' 3 mg.

In bottles of 100 tablets—Basic N.H.S. Price 4/1d. plus P. Tax 1/3d.

'PHENAGLATE'

Trade Mark

a quick-acting, medium duration hypnotic for routine use.

Capsules each containing:—

Quinalbarbitone sodium 50 mg.

Phenobarbitone 25 mg.

'MEGIMIDE' 7.5 mg.

In bottles of 30 capsules—Basic N.H.S. Price 6/-d. plus P. Tax 1/9d.

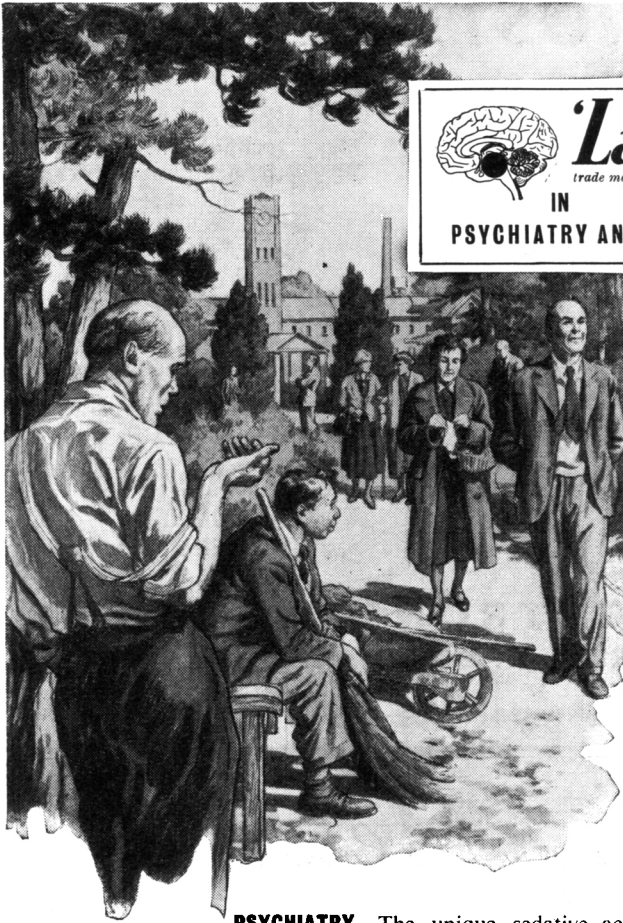
Literature and samples on request



ASPRO-NICHOLAS LTD

ETHICAL PHARMACEUTICAL DIVISION *Slough, Bucks, England*

Manufactured by a subsidiary company—A. & G. NICHOLAS LTD., SLOUGH.





'Largactil'
trade mark brand

IN
chlorpromazine
hydrochloride

PSYCHIATRY AND NEURO-SURGERY

PSYCHIATRY. The unique sedative action of 'Largactil' is of particular value in the symptomatic control of psychomotor over-activity such as may occur in schizophrenia, manic-depressive states, paranoid psychoses, and senile dementia. The patient is calmed, and in this state is usually receptive to whatever therapeutic measures may be indicated.

NEURO-SURGERY. The use of 'Largactil' as an adjuvant to anaesthesia for neuro-surgery is now extensively recognized. The principal indications are: to reduce pre-anaesthetic apprehension; to enhance or facilitate anaesthesia; to prevent post-operative nausea, vomiting, and hiccup (especially valuable in patients with head injuries); and to minimize traumatic shock.

Detailed information is available on request.

Presentations. Tablets 10 mg. and 100 mg. Syrup containing 25 mg. per 3.6 c.c. (approx. 1 teaspoonful). **Solutions for injection:** 1% in 5 c.c. ampoules, 2.5% in 1 c.c. and 2 c.c. ampoules. **Suppositories** each containing 100 mg. base.

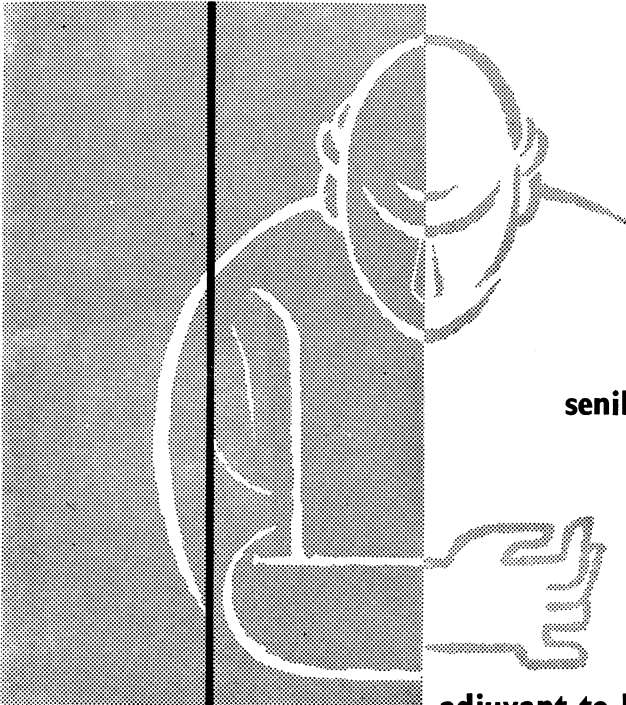


MANUFACTURED BY
MAY & BAKER LTD

An M&B brand Medical Product

MA4521

////////////////////// DISTRIBUTORS ////////////////////////
PHARMACEUTICAL SPECIALITIES (MAY & BAKER) LTD • DAGENHAM



1.
senile and presenile
depression

2.
parkinsonism

3.
adjutant to Reserpine treatment
of chronic and acute schizophrenia

DISIPAL
regd.

orphenadrine hydrochloride

"With the aid of the blocking substance orphenadrine the side effects of reserpine treatment can be greatly reduced and partially obviated. In addition, the sedative effect of reserpine is enhanced by orphenadrine. While, up to now, the most important use of reserpine was in the treatment of chronic psychoses, because of its delayed action, phenothiazine or convulsive treatment were preferred in acute cases with a stormy course. Now treatment with reserpine in combination with orphenadrine also seems possible in these forms of disease."

(Scheurle, G., Deut. Med. Wschr. **82**, 2227 (1957)).

Packs of 100 and 250 tablets
Prescribable on E.C. 10

U.K. Patents 722009, 585994, 607258 and 743495.

Manufactured and distributed in England by
CAMDEN CHEMICAL CO. Ltd., London W.C. 1



for

N.V. Koninklijke Pharmaceutische Fabrieken v/h
BROCADES - STHEEMAN & PHARMACIA
Amsterdam Holland

BARNWOOD HOUSE

GLOUCESTER

A REGISTERED HOSPITAL (outside the National Health Service), for the CARE and TREATMENT of LADIES and GENTLEMEN suffering from NERVOUS and MENTAL DISORDERS. Within two miles of the Western and London Midland Regional Railway Stations at Gloucester, the Hospital is easily accessible by rail from London and all parts of the United Kingdom. It is beautifully situated at the foot of the Cotswold Hills, and stands in its own grounds of over 300 acres. Voluntary Patients of both sexes are also received for treatment. Special accommodation is also provided at two villa residences, both of which stand in their own grounds and are entirely separate from the main Hospital. All the most modern methods of treatment including electric shock and prefrontal leucotomy are used.

HUME TOWERS

27 BRANKSOME WOOD ROAD, BOURNEMOUTH

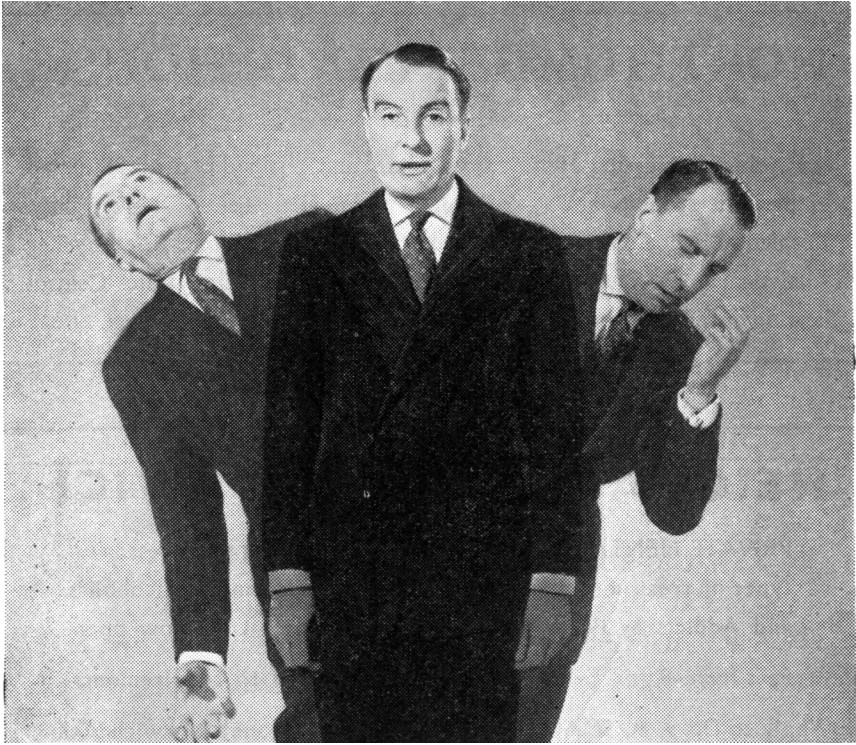
TELEPHONE: WESTBOURNE 64384

has been opened as an ordinary nursing home for all kinds of borderline mental and nervous breakdown, with special accommodation for geriatric cases in a separate villa. Applications for admissions should be made to the Resident Medical Officer, Hume Towers.

For Terms, etc., apply to

G. W. T. H. FLEMING, M.R.C.S., L.R.C.P., D.P.M.,
Physician Superintendent

TELEPHONE: No. 66207 GLOUCESTER



Now an epileptic can face the day with confidence—on 'Mysoline'

Clinical experience has clearly shown that with proper treatment and understanding most epileptics can lead full and happy lives. To achieve this the selection of an appropriate drug is most essential.

Evidence of the efficacy of 'Mysoline' continues to pour in from all parts of the world. It has been found that it not only reduces the frequency and severity of attacks but also has a beneficial effect on the general condition and outlook of the patient. Mental alertness replaces former dullness, and there is a renewed interest in normal activities, and a general im-

provement in sociability.

For these reasons, when an improvement in performance is desirable, it is often advantageous to use 'Mysoline' in cases already controlled by other drugs.

'Mysoline' combines high activity with low toxicity, a wide margin of safety and absence of hypnotic effect during established treatment.

Available as tablets of 0.25 G and as a palatable oral suspension. Basic N.H.S. costs: 4/4d. for 30 Tablets dispensed from pack of 1,000 and 5/8d. for 100ml. of Suspension.

Mysoline TRADE MARK **PRIMIDONE B.P.**

IMPERIAL CHEMICAL INDUSTRIES LIMITED
Pharmaceuticals Division

Wilmslow Cheshire Ph.840



NORTHUMBERLAND HOUSE

A Psychiatric Nursing Home for voluntary and certified patients. Situated in pleasant grounds at 237-9 Ballards Lane, N.3. Tel. FINchley 5283. Resident Medical Director, Dr. Robert M. Riggall, Memb. Brit. Psycho-Analytical Socy. Deep Insulin Coma Unit, psychotherapy, etc. Central heating and running water in all rooms.

HEIGHAM HALL, NORWICH

PRIVATE MENTAL HOME for Nervous and Mental illness. All types of treatment carried out. Accommodation for Alcoholics and Addicts available. Special Geriatric Unit now open.

Fees from 8 gns. per week upwards according to requirements.

Apply to Dr. J. A. SMALL.

Telephone: Norwich 20080.

CHISWICK HOUSE, Moss Lane, Pinner, Middlesex

Telephone: Pinner 234

Private Nursing Home for Nervous and Mild Mental Disorders and Alcoholism.

Psychotherapy, E.C.T., Modified insulin, etc. Fees from 18 guineas a week inclusive of nursing and medical attention. Forty patients of both sexes including a small number of long-term elderly cases. Two country houses in 5 and 6 acres respectively in adjoining grounds. Twelve miles north-west of London. Easily accessible by Metropolitan train from Baker Street to Pinner. Ten minutes walk from Pinner station.

Apply to the Medical Director, DOUGLAS MACAULAY, M.D., D.P.M.

HITCHAM PLACE, BURNHAM, BUCKS.

(late Fenstanton, Christchurch Road, S.W.2)

A Private Home for the Care and Treatment of a limited number of Ladies with Mental and Nervous Disorders. Temporary and Voluntary Patients received. Large Country Mansion with twenty acres of grounds in Green Belt. Home-like surroundings.

Apply: Dr. Madeline R. Lockwood, Resident Physician. Telephone: Burnham 624

SPRINGFIELD HOUSE, Near BEDFORD

Telephone: Bedford 3417

A Private Mental Hospital two miles from Bedford Station, for 48 patients of both sexes (Certified or Voluntary). Extensive grounds and vegetable garden. Elderly patients requiring special care and attention are admitted.

Fees from 10 Guineas per week.

For Forms of Admission, etc., apply to the Resident Physician, CEDRIC W. BOWER

ST. ANDREW'S CONVENT, STIRCHES, HAWICK**Rox., Scotland**

Private Licensed Home, under the care of the Augustinian Sisters, for the treatment and cure of ladies mentally afflicted. Voluntary boarders taken. Forty-two patients.

For particulars apply to Superioress

Tel. No. Hawick 2360

*IN THIS FIRST ISSUE FOR 1959 of the
Journal of Mental Science Aldridge Press Ltd
again take the opportunity of extending their sincere
good wishes for a year of peaceful progress*

Manufacturers and Suppliers of Ethical Pharmaceuticals, Electrical Treatment Apparatus, Materials for Occupational Therapy and Rehabilitation Units, Hospital Equipment and Ward Furniture, Cooking, Lighting, Laundry and other specialised equipment, including Doctors' and Nurses' protective clothing, uniforms etc. are reminded that applications for allocation of advertisement space in the *Journal of Mental Science* should be addressed to

*The Advertisement Manager,
The Journal of Mental Science,*

ALDRIDGE PRESS LTD**27 Chancery Lane London WC2**

Telephone: HOLborn 8655/6

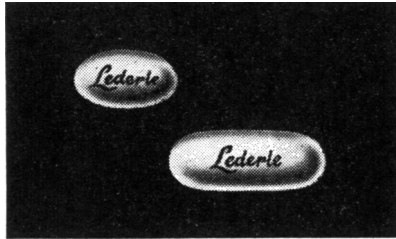
Telegrams: Presreps, Holb. London

CLINICAL PSYCHOLOGISTS

(MASTERS DEGREE)

wanted by

PROVINCIAL MENTAL HEALTH SERVICES OF B.C. CANADAWrite for full particulars *re* existing vacancies, salaries and working conditions, etc., to:*Competition No: 58:614 Civil Service Commission, Essondale, B.C. Canada*



Miltown^{*}

MEPROBAMATE

^{*}REGD. TRADEMARK OF CARTER PRODUCTS INC.

in capsule form
has more advantages

No bitter taste

Enables the physician to change presentation without altering therapy . . .

200 mg. Capsule is particularly useful for children

MILTOWN is now widely prescribed as a sedative and muscle relaxant

Capsules of 200 mg. and 400 mg. Available in bottles of 50 and 250.

Also available in tablet form

**LEDERLE LABORATORIES**

a division of

CYANAMID OF GREAT BRITAIN LTD. London W.C.2



INSTRUCTIONS TO AUTHORS

Strict observation of the following requirements will save intending authors considerable time and worry, and will facilitate the publication of papers submitted.

(1) Authors should consult a current issue to see how a paper should be presented. They should consult *General Notes on the Preparation of Scientific Papers*, published for the Royal Society by the Cambridge University Press, 200 Euston Road, London, N.W.1 (price 2s. 9d. post free).

(2) The title should be brief and contain no sub-heading. This should be followed by the author's name, his qualifications and his present appointment.

(3) Omit a summary of the literature when this has been adequately summarized elsewhere.

(4) For reasons of economy, case-histories of patients can be published only when they are of exceptional scientific interest.

(5) Diagrams and graphs must be drawn in black ink with properly printed lettering. If they have to be redrawn by the printer, the cost, which may amount to several pounds, will be charged to the author.

(6) Tables and graphs should be kept as few as possible. If they number more than a few, the author must be prepared to pay part of their cost.

(7) Any deviation or difference that might be due to random sampling must, if it is to be discussed in its general, scientific significance, be first shown, by calculation of the appropriate probability, to be significant statistically.

(8) All references should be given at the end of the paper, in alphabetical order, and be numbered, i.e.

(1) SMITH, A. B., *J. Ment. Sci.*, 1950, **95**, 493.

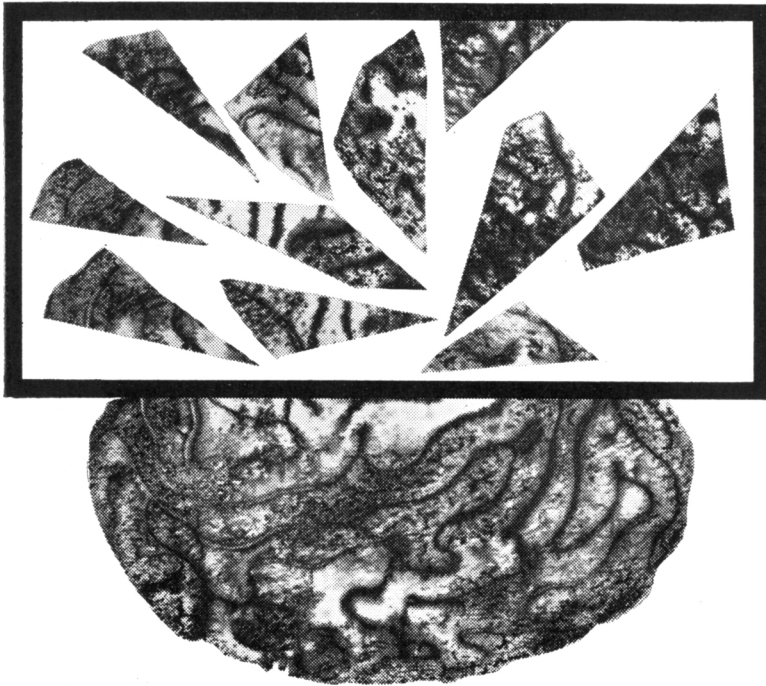
(2) THOMAS, B. C., *Arch. Neur. Psychiat.*, 1955, **74**, 489.

In the body of the paper they should appear as: Smith (1), Thomas (2).

(9) When the proof arrives from the printer it is for the correction of printer's mistakes only. Larger alterations can be made only with the Editor's permission and if the author is willing to defray the cost.

(10) Each author and co-author will receive 10 reprints of his paper free of charge. If further reprints are required the order should be sent **direct** to Messrs. Headley Brothers, Ltd., The Invicta Press, Ashford, Kent, at the time the galley proof is sent to the author. Orders for reprints must **not** be sent to the Editor-in-Chief.

(11) A paper sent to the Editor-in-Chief is, as a rule, sent to one of the panel of Referees set out on the cover of the Journal for his opinion.



to restore normal cerebral function

Parentrovite

Parentrovite is a high potency injectable preparation of the vitamin B complex with vitamin C. The formula is based on the fact that normal cerebral function depends on the oxidation of glucose and that any interference with the underlying biochemical mechanisms can cause symptoms of mental disturbance. Severe infections, burns, trauma, surgical operations, and "stresses" of all kinds can be as potent as drugs and alcohol in causing interference with the enzyme systems responsible for glucose oxidation.

To reverse such changes and to restore normal cerebral function, massive doses of the B vitamins and ascorbic acid are needed—doses out of all proportion to normal nutritional

needs. The vitamins are used here not as nutrients but as potent drugs employed pharmacologically.

The following are examples of the types of disturbance for which Parentrovite is recommended:—

**Post-operative depression and confusion,
The after-effects of influenza, pneumonia
and other severe infections,
Debility with loss of memory
in old people,
Alcoholism, acute and chronic,
Habituation to barbiturates.**

Standard Reference Cards

Factual information on all our products is available. Produced in accordance with A.B.P.I. Specifications, cards can be obtained from our representatives or from Vitamins Ltd.

VITAMINS LIMITED (DEPT. A.R.9.), UPPER MALL, LONDON, W.6.