

COLOUR SECTION

AITIA, ASTRONOMY AND THE TIMING OF THE ARRHEPHORIA

by Efrosyni Boutsikas* and Robert Hannah†

*Department of Classical and Archaeological Studies, University of Kent

†Department of Classics, University of Otago



Fig. 1. Panoramic view of the horizon if standing near the entrance of the Parthenon, and the Athena Polias shrine and the Great Altar (photo: E. Boutsikas).



Fig. 2. Heliacal rising of the Hyades over the 'Horns' of Mt Hymettos, as seen from the east end of the Parthenon in Athens, 600 BC. Auriga is already risen and sits over Mt Lykabettos to the northeast (Voyager 4.5, with Athenian horizon incorporated by R. Hannah).



Fig. 3. Mianes: Agriokambi *rosso antico* deposits (foreground), Kisternes Bay (centre), Tainaron-Cape Matapan (right). View from northwest. Photo courtesy P. Rogers.



Fig. 4. Mianes: Agriokambi *rosso antico* quarry.



Fig. 5. Kokkinogeia *rosso antico* boulder.



Fig. 6. Mianes: Agriokambi, *rosso antico* quarry blocks with modern drill holes (scale 5 cm).

THE REDISCOVERY OF GREEK ROSSO ANTICO MARBLE AND ITS
USE IN BRITAIN IN THE NINETEENTH AND TWENTIETH
CENTURIES

by Peter Warren

Department of Archaeology and Anthropology, University of Bristol



Fig. 7. Church of Prophetes Elias, with quarry to left.



Fig. 9. Paganea: Makrya Mounda quarry with ancient wedge holes.
Photo courtesy P. Rogers.



Fig. 11. Prophetes Elias – highest quarry (Moschou *et al.* 1998, fig. 2 Quarry B) with modern long vertical drill holes at centre and left on main face.



Fig. 12. Alike. House under construction.



Fig. 14. Paganea: Ligorianiko modern quarry. View from west.



Fig. 15. Paganea: Ligorianiko modern quarry and waste heap; Langadhaki inlet (top left); Giannopoulos house on Makrya Mounda (top edge). View from south.



Fig. 16. Paganea: Geogariou overgrown quarry (right centre) and loading jetty (centre). View from northwest.

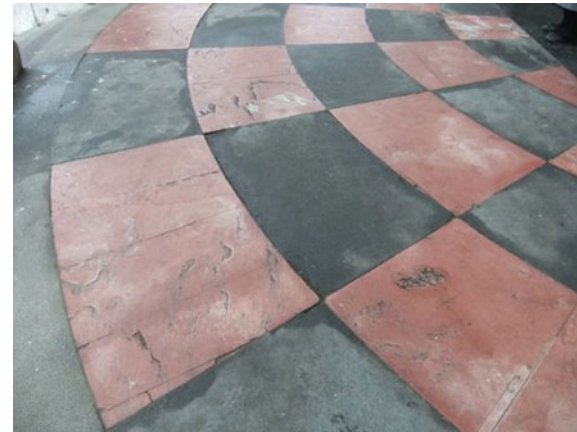


Fig. 17. St Paul's Cathedral, London. South portico pavement.



Fig. 18. St Catherine, Hoarwithy. *Rosso antico* communion rail step.



Fig. 20. Statue of Byron, plinth upper moulding.

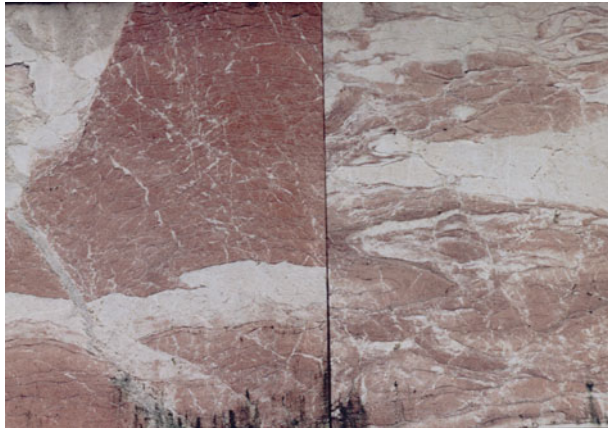


Fig. 21. Statue of Byron, plinth blocks.



Fig. 22. Westminster Cathedral, London. Sanctuary screen and steps.



Fig. 23. Westminster Cathedral, London. Lady Chapel, circular panel of floor.



Fig. 24. Westminster Cathedral, London. North transept pier with *rosso antico* cladding panel.



Fig. 25. Bristol Cathedral. Pulpit.



Fig. 26. San Paolo fuori le Mura, Rome. Exterior west wall, *rosso antico* composite panel.

CAMBRIDGE

JOURNALS

The Classical Quarterly

Published for The Classical Association

Editors

Rhiannon Ash, Merton College, Oxford, UK

John Wilkins, University of Exeter, UK

The Classical Quarterly has a reputation for publishing the highest quality classical scholarship for nearly 100 years. It publishes research papers and short notes in the fields of language, literature, history and philosophy. Two substantial issues (around 300 pages each) of *The Classical Quarterly* appear each year, in May and December. Given the quality and depth of the articles published in *The Classical Quarterly*, any serious classical library needs to have a copy on its shelves.

Price information

is available at: <http://journals.cambridge.org/caq>

Free email alerts

Keep up-to-date with new material – sign up at
<http://journals.cambridge.org/alerts>



Classical Quarterly

is available online at:

<http://journals.cambridge.org/caq>

To subscribe contact Customer Services

in Cambridge:

Phone +44 (0)1223 326070

Fax +44 (0)1223 325150

Email journals@cambridge.org

in New York:

Phone +1 (845) 353 7500

Fax +1 (845) 353 4141

Email

subscriptions_newyork@cambridge.org

For free online content visit:
<http://journals.cambridge.org/caq>



CAMBRIDGE
UNIVERSITY PRESS

CAMBRIDGE

JOURNALS

The Journal of Hellenic Studies

Published for The Society for the Promotion of Hellenic Studies

Editor

Angus M. Bowie, University of Oxford, UK

The Journal of Hellenic Studies (JHS) is recognised internationally as one of the foremost periodicals in the field of classical scholarship. It contains articles on a wide variety of Hellenic topics including Greek language, literature, history and art and archaeology in the Ancient, Byzantine and Modern periods, as well as reviews of recent books of importance to Greek studies.

A subscription to *JHS* includes the annual volume of *Archaeological Reports*, which provide fully illustrated accounts of archaeological work in Greece and other parts of the world that are sites of Greek culture.

Price information

is available at: <http://journals.cambridge.org/jhs>

Free email alerts

Keep up-to-date with new material – sign up at <http://journals.cambridge.org/alerts>



The Journal of Hellenic Studies is available online at: <http://journals.cambridge.org/jhs>

To subscribe contact Customer Services

in Cambridge:

Phone +44 (0)1223 326070
Fax +44 (0)1223 325150
Email journals@cambridge.org

in New York:

Phone +1 (845) 353 7500
Fax +1 (845) 353 4141
Email subscriptions_newyork@cambridge.org

For free online content visit:
<http://journals.cambridge.org/jhs>



CAMBRIDGE

JOURNALS

Papers of the British School at Rome

Published on behalf of the British School at Rome

Editor

Josephine Crawley Quinn, University of Oxford, UK

Papers of the British School at Rome is one of the most highly-regarded journals covering the archaeology, history and art history of Italy and other parts of the Mediterranean area up to modern times. It is edited by senior academics from the British School at Rome's international pool of affiliated scholars, and is the School's major publication. PBSR will publish its 79th volume with Cambridge in 2011.

Price information

is available at: <http://journals.cambridge.org/rom>

Free email alerts

Keep up-to-date with new material – sign up at
<http://journals.cambridge.org/alerts>



Papers of the British School at Rome

is available online at:
<http://journals.cambridge.org/rom>

To subscribe contact Customer Services

in Cambridge:

Phone +44 (0)1223 326070
Fax +44 (0)1223 325150
Email journals@cambridge.org

in New York:

Phone +1 (845) 353 7500
Fax +1 (845) 353 4141
Email
subscriptions_newyork@cambridge.org

For free online content visit:
<http://journals.cambridge.org/rom>



CAMBRIDGE
UNIVERSITY PRESS

THE BRITISH SCHOOL AT ATHENS
(2012)

PATRON
HRH THE PRINCE OF WALES

DIRECTOR
PROFESSOR C. A. MORGAN, MA, Co-Editor of the Annual

VICE-PRESIDENTS
HM AMBASSADOR TO THE HELLENIC REPUBLIC (ex officio)
PROFESSOR SIR JOHN BOARDMAN, MA, FBA, FSA
G. CADOGAN, ESQ., MA, FSA
DR H.W. CATLING, CBE, MA, FSA
M.S.F. HOOD, ESQ., MA, FBA, FSA
LORD RENFREW of KAIMSTHORN, Ph.D., FBA, FSA
SIR MICHAEL LLEWELLYN SMITH, KCVO, CMG, D.Phil
MR H. SACKETT, MA, Dip.ED., FSA
PROFESSOR R.A. TOMLINSON, MA, FSA
PROFESSOR P.M. WARREN, MA, FBA, FSA
DR M.H. WIENER, FSA
DR C.K. WILLIAMS II, FSA

COUNCIL
PROFESSOR MALCOLM SCHOFIELD, Chair
SIR ADAM RIDLEY, Vice-chair

Ex-officio:

DR CAROL BELL (Honorary Treasurer)
PROFESSOR W.G. CAVANAGH (Chair of the
Committee for Archaeology)
SIR MICHAEL LLEWELLYN SMITH (Chair of
the Committee for Society, Arts, and Letters)
SIR ADAM RIDLEY (Chair of the Finance and
General Purposes Committee)
MR GERALD CADOGAN (Vice-presidential
representative)

Members:

DR Z. ARCHIBALD
DR R. BARBER
DR A. DUNN
DR S. MOSSMAN
DR N. SPENCER
DR E. ASTON
PROFESSOR J. BENNET
MR K. FEENY
DR R. PAYNE
DR S. WALLACE

London Secretary
Ms PHILIPPA WALLER

Chairman: Publications Subcommittee and Editorial Board
DR A. W. JOHNSTON, MA, FSA

Editor of the *Annual*
DR S. SHERRATT

EDITORIAL BOARD

PROFESSOR SUSAN ALCOCK, Brown
PROFESSOR STELIOS ANDREOU, Thessaloniki
PROFESSOR JOOST CROUWEL, Amsterdam
DR YANNIS HAMILAKIS, Southampton
PROFESSOR PAUL HALSTEAD, Sheffield
PROFESSOR MILTIADES HATZOPOULOS, Athens
PROFESSOR JUDITH HERRIN, King's College,
London

PROFESSOR PASCHALIS KITROMILIDIS, Athens
PROFESSOR CHRIS MEE, Liverpool
DR JAMES ROY, Nottingham
PROFESSOR TONY SPAWFORTH,
Newcastle-upon-Tyne
PROFESSOR ANDREW STEWART, Berkeley
DR IAN WHITBREAD, Leicester
And members of the Publications Subcommittee,
ex-officio

CONTENTS

- I SARO WALLACE WITH CONTRIBUTIONS BY DIMITRA MYLONA: Surviving crisis: Insights from new excavation at Karphi, 2008
- 87 BARRY P.C. MOLLOY: Martial Minoans? War as social process, practice and event in Bronze Age Crete
- 143 M.C. SHAW: New light on the Labyrinth Fresco from the palace at Knossos
- 161 O.T.P.K. DICKINSON, LENA PAPAZOGLU-MANIOUDAKI, ARGYRO NAFPLIOTI AND A.J.N.W. PRAG: Mycenae revisited Part 4: Assessing the new data
- 189 ALEXANDRA LIVARDA: The archaeobotanical evidence of the Late Bronze Age and Protogeometric occupation under the Roman Villa Dionysus, Knossos, Crete, and an overview of the Protogeometric data of Greece
- 211 ANGELA ZISKOWSKI: Clubfeet and Kypselids: Contextualising Corinthian padded dancers in the Archaic period
- 233 EFROSYNI BOUTSIKAS AND ROBERT HANNAH: *Aitia*, astronomy and the timing of the Arrhēphoria
- 247 ALAN JOHNSTON, ALESSANDRO QUERCIA, ARIS TSARAVOPOULOS, ANDREW BEVAN AND JAMES CONOLLY: Pots, piracy and Aegila: Hellenistic ceramics from an intensive survey of Antikythera, Greece
- 273 AMANDA KELLY: The Cretan slinger at war – a weighty exchange
- 313 M.W. BOWSKY: Four inscriptions from Greater Knossos and the road to its port at Heraklion (Crete)
- 341 PETER WARREN: The rediscovery of Greek *Rosso Antico* marble and its use in Britain in the nineteenth and twentieth centuries

Cambridge Journals Online

For further information about this journal
please go to the journal web site at

<http://journals.cambridge.org/ath>



MIX
Paper from
responsible sources
FSC® C007785

CAMBRIDGE
UNIVERSITY PRESS