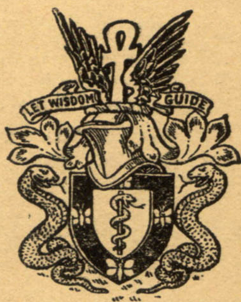


VOL. XCIX, NO. 414

JANUARY, 1953

THE JOURNAL OF MENTAL SCIENCE

(THE BRITISH JOURNAL OF PSYCHIATRY)



BY AUTHORITY OF
THE ROYAL MEDICO-PSYCHOLOGICAL ASSOCIATION

EDITOR-IN-CHIEF
G. W. T. H. FLEMING

CO-EDITORS
Alexander Walk and P. K. McCowan

AND WITH THE ASSISTANCE OF

E. D. Adrian	F. L. Golla
W. Ross Ashby	Alfred Meyer
Sir F. C. Bartlett	Lionel S. Penrose
W. E. le Gros Clark	A. A. W. Petrie
S. M. Coleman	Derek Richter
C. J. C. Earl	E. T. O. Slater
Sir A. Fleming	

LONDON
J. & A. CHURCHILL, LTD

Published Four times Yearly Twelve Shillings and Sixpence net

THE JOURNAL OF MENTAL SCIENCE

Communications on general editorial matters, including MSS. for publication, books for review and other printed matter, and communications regarding the *Epitome* section, including journals to be abstracted, should be sent to the **Editor-in-Chief, Barnwood House, Gloucester.**

Communications and inquiries regarding sales should be addressed to the Publishers, **Messrs. J. & A. CHURCHILL, Ltd., 104, Gloucester Place, Portman Square, London, W.1;** and those regarding Advertisements to the **Editor-in-Chief, Barnwood House, Gloucester.** Phone: Gloucester 66292.

THE ROYAL MEDICO-PSYCHOLOGICAL ASSOCIATION. PUBLICATIONS.

From MESSRS. ADLARD & SON, LTD.,
Bartholomew Press, Dorking, Surrey.

Enquiry (History) Form, for use in Mental Hospitals. In three sizes. Prices and specimen forms on application.

From MESSRS. J. & A. CHURCHILL, LTD.,
104 Gloucester Place, W. 1

"The Journal of Mental Science." Published four times a year. Price 12/6. Postage extra.

From MESSRS. BAILLIÈRE, TINDALL & COX,
8 Henrietta Street, W.C. 2

"Handbook for Mental Nurses." 8th edn. In preparation.

"Manual for Mental Deficiency Nurses." 1931. Price 6/6 net.

"Occupational Therapy." Addendum to "Handbook." 1938. Price 6d.

From the REGISTRAR, DR. W. SARGANT, 3 Harley Street, W. 1.

"Nursing Examination Papers, 1928-38." Price 9d. each. Postage 1d.

"Regulations for the D.P.M. of the R.M.P.A."

From the SECRETARY, 11 Chandos Street, W. 1.

The Charter and By-Laws of the Association. Price 2/- Postage 1½d.

THE OLD MANOR, SALISBURY

Telephone: 3216 & 3217

*A Private Hospital for the Care and Treatment of those
of both sexes suffering from MENTAL DISORDERS*

Extensive grounds. Detached Villas. Chapel. Garden produce from own gardens.
Terms very moderate.

CONVALESCENT HOME AT BOURNEMOUTH

standing in 12 acres of ornamental grounds, with separate villas, tennis courts, etc. Patients or boarders may visit the Home by arrangement.

Illustrated Brochure on application to the Medical Superintendent, The Old Manor, Salisbury

WYKE HOUSE, ISLEWORTH

MIDDLESEX

Tel. EALing 7000

A Private Hospital for individual treatment of all forms of Nervous and Mental Illness, including Alcoholism. Uncertified and certified patients are admitted and particular attention is given to the needs of the aged. This well-known Home for Men and Women is surrounded by attractive and secluded grounds, and all well-tried modern treatments are available.

DR. H. PULLAR-STRECKER

DR. G. W. SMITH, O.B.E.

Mental and Nervous Disorders

● *St. John of God Hospital is beautifully situated between the Dublin mountains and the sea, 5 miles from the city, and surrounded by its own pleasantly wooded and extensive grounds*



Every form of modern treatment. Electrical Convulsive Therapy (with Curare if necessary), Insulin Coma Unit, Modified Insulin, Prolonged Narcosis, Psycho-Therapy, Prefrontal Leucotomy, Occupational Therapy, Recreational Therapy, Staff of Regularly Visiting Consultants.

Fully-trained Nursing Staff of Brothers of St. John of God, Dietician, Resident Chaplain. Male Patients only. Terms on application.

Address enquiries to: P. F. O'BRIEN, M.B., B.Ch., B.A.O., D.P.M. Resident Medical Superintendent.

St. John of God
Hospital

St. John of God Hospital, Stillorgan, Dublin

Phone: 82043-855751

ADLARD & SON

LIMITED

**BARTHOLOMEW PRESS
DORKING — SURREY**



**PRINTERS
OF THIS ::
:: JOURNAL**

ESTIMATES SUBMITTED PROMPTLY

FOUNDED IN 1766, the Firm has continued uninterruptedly, and is able to undertake **ALL CLASSES OF PRINTING.**

The Staff is Specially Trained in the production of all printed matter connected with **Private Hospitals and Homes, Medical, Scientific and other Institutions.**

Regd. Offices: 194/200 BISHOPSGATE, E.C. 2.

Tel.: DORKING 3874.

MENTAL HOSPITALS, INSTITUTIONS, HOMES, ETC.

CHEADLE ROYAL CHEADLE,
CHESHIRE

A Registered Hospital for MENTAL DISEASES, and its
Seaside Branch, GLAN-Y-DON, Colwyn Bay, N. Wales.

THE object of this Hospital is to provide the most efficient means for
the treatment and care of PRIVATE PATIENTS OF BOTH
SEXES suffering from MENTAL and NERVOUS DISEASES.
The Hospital is governed by a Committee appointed by Trustees.

VOLUNTARY, TEMPORARY and CERTIFIED PATIENTS
RECEIVED.

For Terms and further information apply to the MEDICAL SUPERINTENDENT.

Telephone: GATLEY 2231.

CHISWICK HOUSE Telephone: PINNER 234

A Private Nursing Home for the Treatment and Care
of Mental and Nervous Illnesses in both sexes. **PINNER, MIDDLESEX**

A modern house. 12 miles from Marble Arch, in attractive, secluded grounds. Fees from 12 guineas per
week, inclusive. Patients treated under certificate. Temporary or Voluntary status. Modern forms of treat-
ment, including psychotherapy, narco-analysis, modified insulin, occupational therapy, E.C.T., etc.

DOUGLAS MACAULAY, M.D. D.P.M.

HITCHAM PLACE, BURNHAM, BUCKS.

(late Fenstanton, Christchurch Road, S.W.2)

A Private Home for the Care and Treatment of a limited number of Ladies with Mental
and Nervous Disorders. Temporary and Voluntary Patients received. Large Country
Mansion with twenty acres of grounds in Green Belt. Home-like surroundings.

Apply : Dr. Madeline R. Lockwood, Resident Physician. Telephone : Burnham 624.

**HAYDOCK LODGE, NEWTON-LE-WILLOWS,
LANCASHIRE**

For the reception and treatment of PRIVATE PATIENTS of both sexes of the UPPER AND MIDDLE
CLASSES suffering from Mental and Nervous Disorders, Alcoholism and Drug Addiction, either voluntary,
temporary or under certificate. Patients are classified in separate buildings according to their mental condition.

Situated in park and grounds of 400 acres. Self-supported by its own farm and gardens in which patients
are encouraged to occupy themselves. Every facility for indoor and outdoor recreation. For terms, prospectus,
etc., apply MEDICAL SUPERINTENDENT.

Telegraphic Address: "Street," Ashton-in-Makerfield.

'Phone: 7311 Ashton-in-Makerfield.

HEIGHAM HALL, NORWICH

PRIVATE MENTAL HOME for Nervous and Mental illness. All
types of treatment carried out. Accommodation for Alcoholics
and Addicts available. Special Geriatric Unit now open.

Fees from 6 gns. per week upwards according to requirements.

Apply to Dr. J. A. SMALL.

Telephone: Norwich 2080.

The CONTRASTIM Apparatus for Counter-Stimulus Therapy

A valuable adjunct to Electroplexy, or as an independent Psychiatric technique. Reduces or eliminates post-convulsant memory-defect. Relieves nervous tension. Central respiratory stimulus.

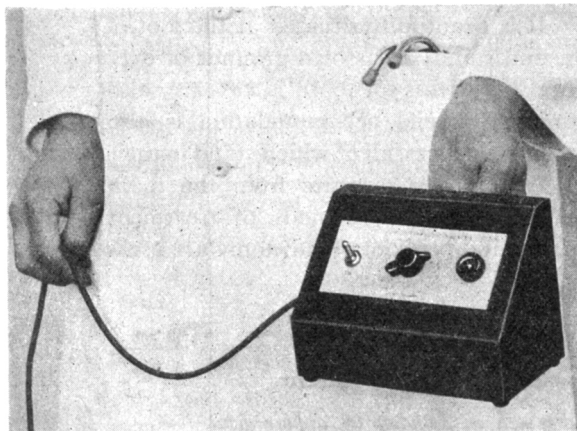
Please write or phone for further particulars

THERATRONICS LTD.
(Dept. B.7), 6 Argyle Walk,
Tonbridge St., London, W.C.1
Telephone: TERminus 2162/3



'ECTRON' CEREBRAL STIMULATOR

(For A.C. or D.C. Mains
or 12 volt Battery)



Reduces post-ECT confusion and amnesia.

Relieves 'tension' in Ch. Neuroses. Cardiac and respiratory stimulation in Narcotic poisoning and irreversible coma.

also:

'ECTRON'

ELECTRO-CONVULSANT APPARATUS

'ECTRON' Moulded Rubber Mouth Gag

Write for full details to:

ECTRON LTD.

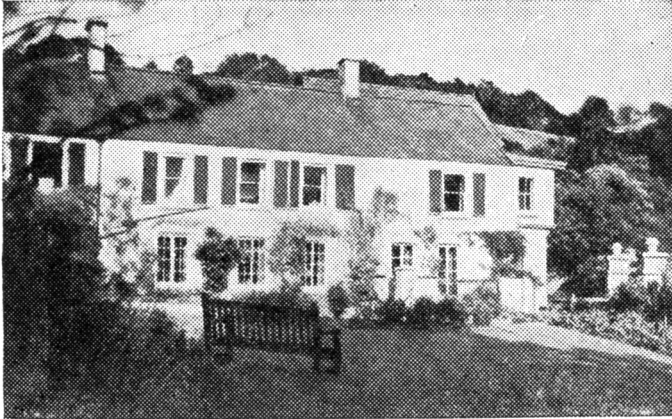
REELEK WORKS, BALDOCK, HERTS, ENGLAND

Telegrams: "Reelek" Baldock

Telephone: Baldock 154

BARNWOOD HOUSE

GLOUCESTER



CRICKLEY COURT—ONE OF THE SEPARATE VILLAS

A REGISTERED HOSPITAL, (outside the National Health Service) for the CARE and TREATMENT of LADIES and GENTLEMEN suffering from NERVOUS and MENTAL DISORDERS. Within two miles of the Western and London Midland Regional Railway Stations at Gloucester, the Hospital is easily accessible by rail from London and all parts of the United Kingdom. It is beautifully situated at the foot of the Cotswold Hills, and stands in its own grounds of over 300 acres. Voluntary Patients of both sexes are also received for treatment. Special accommodation is also provided at three villa residences, all of which stand in their own grounds and are entirely separate from the main Hospital. All the most modern methods of treatment including electric shock and prefrontal leucotomy are used.

For Terms, etc., apply to

G. W. T. H. FLEMING, M.R.C.S., L.R.C.P., D.P.M.,
Physician Superintendent,

who may be seen in London by appointment

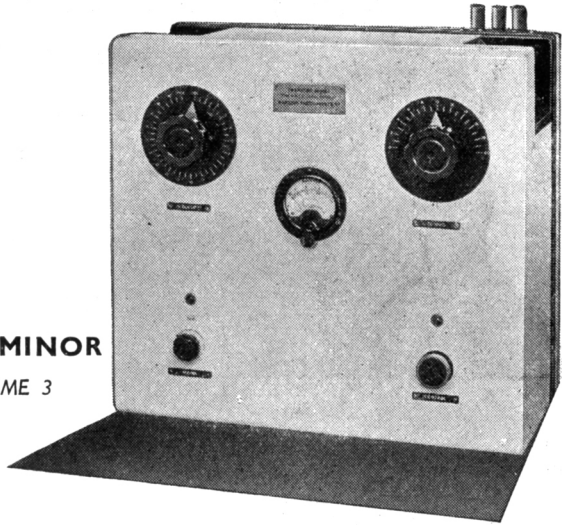
TELEPHONE: No. 66207 GLOUCESTER

Reliability

in delicate Surgery

The THERATOR MINOR

DIATHERMY, Type MME 3



For the most delicate electro-surgery, the Therator Minor Diathermy reliably provides two distinct cutting-currents, ideal respectively, for ophthalmic and neuro-surgery. Output is valve-generated, perfect coagulation being assured by careful selection of component values. Current intensity is regulated by a single knob and is repeatable at pre-selected control positions. A *de luxe* set of electrodes and mobile trolley complete the equipment if required. Further information is freely available.

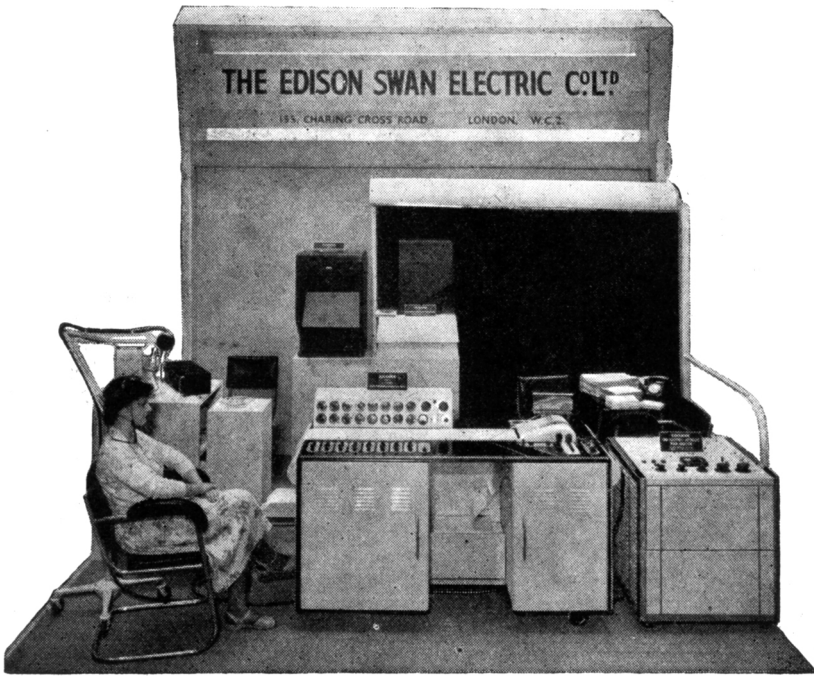
MARCONI INSTRUMENTS

AUDIOMETRY · THERAPEUTIC AND DIAGNOSTIC X-RAYS · ENCEPHALOGRAPHY

MARCONI INSTRUMENTS LTD., ST. ALBANS, HERTS. Telephone: St. Albans 6161/7

Local Marconi Sales and Service Facilities available in:—

BELFAST · CARDIFF · GLASGOW · LEAMINGTON SPA · LIVERPOOL · LONDON · NEWCASTLE · SHEFFIELD · SOUTHAMPTON



*The first world demonstration
of an 8-channel Electro-
Encephalograph with simultaneous
automatic wave analysis.*

THIS demonstration was given by the manufacturers, The Edison Swan Electric Co. Ltd., London, at the International Congress of Radiology, 1950

EDISWAN

THE EDISON SWAN ELECTRIC CO. LTD.

155 CHARING CROSS ROAD · LONDON · W.C.2

Member of the A.E.I. Group of Companies

a useful **HYPNOTIC**
and **SEDATIVE**



has a wide range of application in mental diseases, varying from occasional mild sedation during periods of stress to prolonged narcosis in states of agitation or acute anxiety. 'Soneryl' is particularly valuable because of the ease with which dosage may be adjusted to obtain the desired effect, and the absence of habituation and of cumulative toxic effects.

'SONERYL' is supplied as follows:

TABLETS:

Containers of 25, 100 and 500 x gr.1½.

SUPPOSITORIES:

Containers of 5 x gr.3 and 5 x gr.5.

We shall be glad to send detailed information on request.

AN **M&B** BRAND MEDICAL PRODUCT



manufactured by

MAY & BAKER LTD

distributors

MA 1037

PHARMACEUTICAL SPECIALITIES (MAY & BAKER) LTD • DAGENHAM

INSTRUCTIONS TO AUTHORS

Strict observation of the following requirements will save intending authors considerable time and worry, and will facilitate the publication of papers submitted.

(1) Authors should consult a current issue to see how a paper should be presented. They should consult *General Notes on the Preparation of Scientific Papers*, published for the Royal Society by the Cambridge University Press, 200, Euston Road, London, N.W.1 (price 2s. 9d. post free).

(2) The title should be brief and contain no sub-heading. This should be followed by the author's name, his qualifications and his present appointment.

(3) Omit a summary of the literature when this has been adequately summarized elsewhere.

(4) For reasons of economy, case-histories of patients can be published only when they are of exceptional scientific interest.

(5) Diagrams and graphs must be drawn in black ink with properly printed lettering. If they have to be redrawn by the printer, the cost, which may amount to several pounds, will be charged to the author.

(6) Tables and graphs should be kept as few as possible. If they number more than a few, the author must be prepared to pay part of their cost.

(7) Data should be dealt with in a proper statistical manner, i.e. there should be stated the number of individual results, their mean value, the standard error of the mean and the extreme range of values.

(8) All references should be given at the end of the paper, in alphabetical order, and in the following form :

SMITH, A. B., *J. Ment. Sci.*, 1950, **95**, 493.

In the body of the paper they should appear as : Smith (1950).

(9) When the proof arrives from the printer it is for the correction of printer's mistakes only. Larger alterations can be made only with the Editor's permission and if the author is willing to defray the cost.

(10) The author will receive 6 reprints of his paper free of charge. If further reprints are required the order should be sent **direct** to Messrs. Adlard & Son, Ltd., Bartholomew Press, Dorking, Surrey.

(11) A paper sent to the Editor-in-Chief is, as a rule, sent to one of the panel of Referees set out on the cover of the Journal for his opinion. Papers are as a rule not rejected until a second or further opinion have been received.

[Facing 1st matter