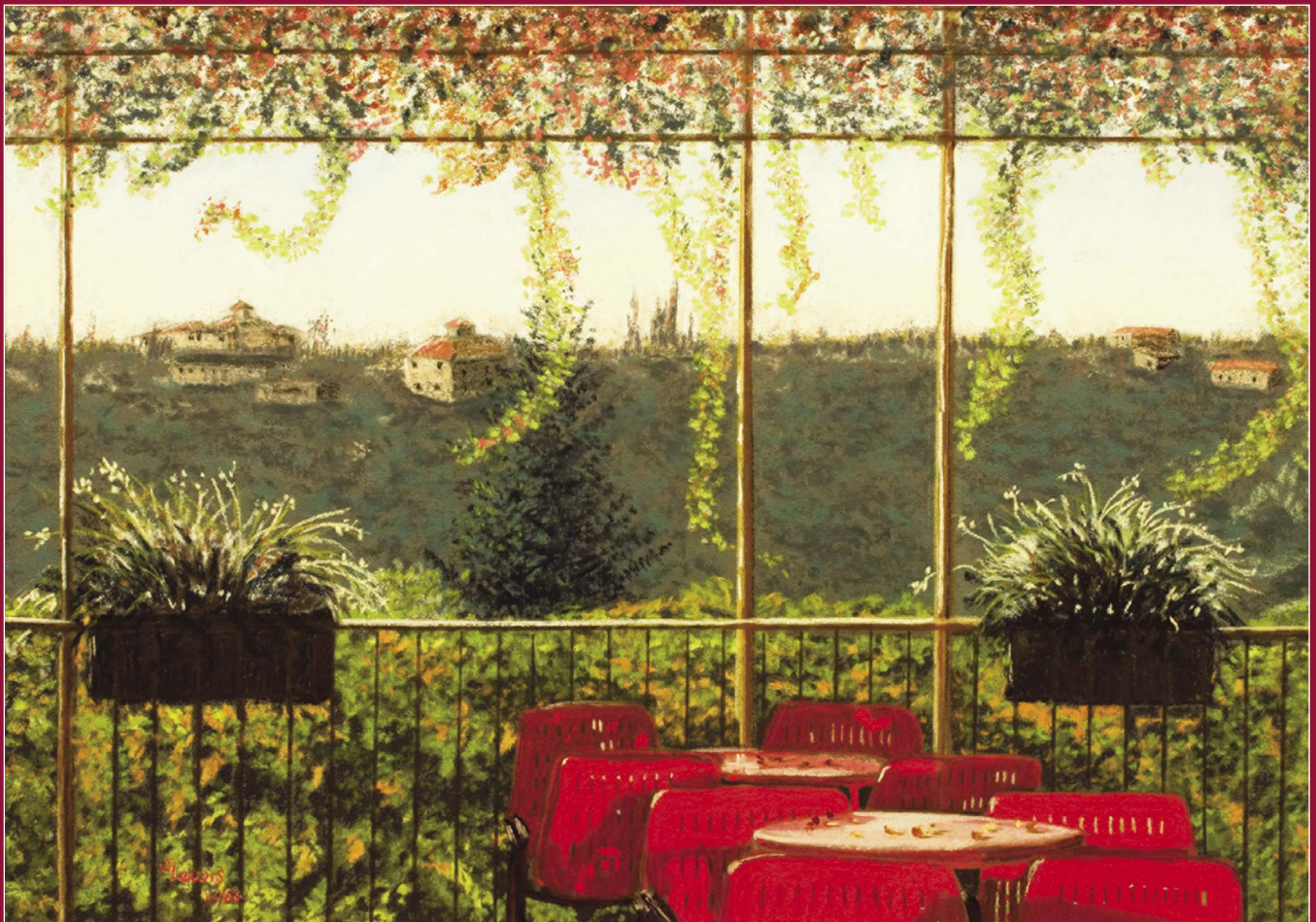


PREHOSPITAL and DISASTER MEDICINE

Volume 31, Number 2

April 2016



WADEM

CAMBRIDGE
UNIVERSITY PRESS

The Official Journal of the
World Association for Disaster and Emergency Medicine

Epidemiology and Infection

Editor-in-Chief

Norman Noah, London School of Hygiene and Tropical Medicine, UK

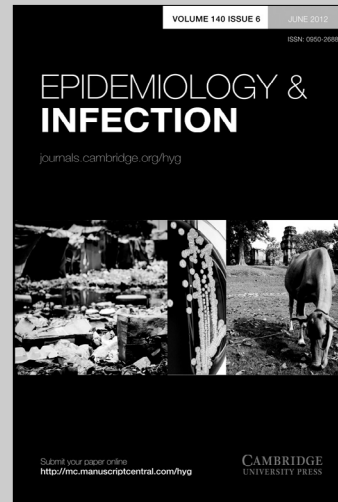
Epidemiology and Infection publishes original reports and reviews on all aspects of infection in humans and animals. Particular emphasis is given to the epidemiology, prevention and control of infectious diseases. The field covered is broad and includes the zoonoses, tropical infections, food hygiene, vaccine studies, statistics and the clinical, social and public health aspects of infectious disease. Papers covering microbiology and immunology, which have an epidemiological relevance, are part of this broad field. Papers come from medical and veterinary scientists worldwide. It has become the key periodical in which to find the latest reports on recently discovered infections and new technology. For those concerned with policy and planning for the control of infections, the papers on mathematical modelling of epidemics caused by historical, current and emergent infections, will be of particular value.

Price information

is available at: <http://journals.cambridge.org/hyg>

Free email alerts

Keep up-to-date with new material – sign up at
<http://journals.cambridge.org/alerts>



Epidemiology and Infection
is available online at:
<http://journals.cambridge.org/hyg>

To subscribe contact Customer Services

in Cambridge:

Phone +44 (0)1223 326070

Fax +44 (0)1223 325150

Email journals@cambridge.org

in New York:

Phone +1 (845) 353 7500

Fax +1 (845) 353 4141

Email

subscriptions_newyork@cambridge.org

For free online content visit:
<http://journals.cambridge.org/hyg>



CAMBRIDGE
UNIVERSITY PRESS

Table of Contents

EDITORIAL

- Zika Virus Association with Microcephaly: The Power for Population Statistics to Identify Public Health Emergencies** 119
Samuel J. Stratton, MD, MPH

ORIGINAL RESEARCH

DISASTER HEALTH AND MEDICINE

- An Assessment of Collaboration and Disasters: A Hospital Perspective** 121
Sabrina A. Adelaine, PhD; Kimberly Shoaf, DrPH; Caitlin Harvey, MPH
- Are Tertiary Care Paediatricians Prepared for Disaster Situations?** 126
Luc J.M. Mortelmans, MD; Sofie Maebe, MD; Greet Dieltiens, MD; Kurt Anseeuw, MD; Marc B. Sabbe, MD, PhD; Patrick Van de Voorde, MD, PhD
- Disaster Preparedness among Active Duty Personnel, Retirees, Veterans, and Dependents** 132
Heather Annis, MD, LT MC USN; Irving Jacoby, MD; Gerard DeMers, DO, DHSc, MPH, CDR MC USN

EMERGENCY MEDICAL SERVICES

- Description of Medication Administration by Emergency Medical Services during Mass-casualty Incidents in the United States** 141
Mazen El Sayed, MD, MPH; Hani Tamim, PhD, MPH; N. Clay Mann, PhD, MS
- First Responder Accuracy Using SALT during Mass-casualty Incident Simulation** 150
Christopher W.C. Lee, MD, BSc; Shelley L. McLeod, MSc, BSc Hons; Kristine Van Aarsen, MSc, BSc; Michelle Klingel, MSc, BSc; Jeffrey M. Franc, MD, MSc, FCFP(EM), Dip. Sport Med., EMDM; Michael B. Peddle, MD, FRCP(C), Dip. Sport Med
- Vaccination Against Seasonal or Pandemic Influenza in Emergency Medical Services** 155
Alexandre Moser, MD; Cédric Mabire, PhD; Olivier Hugli, MD, MPH; Victor Dorribo, MD; Giorgio Zanetti, MD; Catherine Lazor-Blanchet, MD; Pierre-Nicolas Carron, MD

GLOBAL HEALTH

- A Case Study of the High-speed Train Crash Outside Santiago de Compostela, Galicia, Spain** 163
Rebecca Forsberg, PhD; José Antonio Iglesias Vázquez, MD, PhD

COMPREHENSIVE REVIEW

- Review of Coping in Children Exposed to Mass Trauma: Measurement Tools, Coping Styles, and Clinical Implications** 169
Betty Pfefferbaum, MD, JD; Pascal Nitiéma, MD, MPH, MS; Anne K. Jacobs, PhD; Mary A. Noffsinger, PhD; Leslie H. Wind, PhD; Sandra F. Allen, PhD

SPECIAL REPORTS

- Research and Evaluations of the Health Aspects of Disasters, Part VI: Interventional Research and the Disaster Logic Model** 181
Marvin L. Birnbaum, MD, PhD; Elaine K. Daily, RN, BSN, FCCM; Ann P. O'Rourke, MD, MPH; Jennifer Kushner, EdD

Research and Evaluations of the Health Aspects of Disasters, Part VII: The Relief/Recovery Framework	195
<i>Marvin L. Birnbaum, MD, PhD; Elaine K. Daily, BSN, FCCM; Ann P. O'Rourke, MD, MPH</i>	
Vulnerable Populations in Hospital and Health Care Emergency Preparedness Planning: A Comprehensive Framework for Inclusion	211
<i>Debra Kreisberg, PhD; Deborah S.K. Thomas, PhD; Morgan Valley, MS, MPH; Shannon Newell, MPA, MPH; Enessa Janes, PhD; Charles Little, DO</i>	
International Consensus on Key Concepts and Data Definitions for Mass-gathering Health: Process and Progress	220
<i>Sheila A. Turris, RN, BHSc, MSN, PhD; Malinda Steenkamp, B.Nursing, BA(Hons), M.Phil, PhD; Adam Lund, BSc, MD, MEd, FRCPC (Emergency); Alison Hutton, RN, BN, MN, PhD; Jamie Ranse, RN, FCNA, FCENA, BNurs, GradCertClinEd, GradCertClinEpi, MCritCarNurs, PhD(Cand); Ron Bowles, EMA II, BEd, MEdTech, PhD; Katherine Arbuthnott, BA, BMBCb, MRCGP, MSc; Olga Anikeeva, BHealthSci(Hons), PhD; Paul Arbon, RN, BSc, DipEd, Grad Dip Health Ed, MEd, PhD</i>	
BRIEF REPORT	
Survey of Emergency Department Chemical Hazard Preparedness in Michigan, USA: A Seven Year Comparison	224
<i>Justin B. Belsky, MD; Howard A. Klausner, MD; Jeffrey Karson, BS; Robert B. Dunne, MD</i>	
CASE REPORT	
Observed Benefits to On-site Medical Services during an Annual 5-day Electronic Dance Music Event with Harm Reduction Services	228
<i>Matthew Brendan Munn, MPhil, MD, CCFP(EM), DA(SA); Adam Lund, BSc, MD, MEd, FRCPC (Emergency); Riley Golby, BSc; Sheila A. Turris, RN, BHSc, MSN, PhD</i>	

Editorial Office
World Association for Disaster and Emergency
Medicine (WADEM), Madison,
Wisconsin USA

Editor-in-Chief
Samuel J. Stratton, MD, MPH

Managing Editor
Ellen Johnson, MS

Editorial Assistant
Deidra A. Dean

Publisher
Cambridge University Press
32 Avenue of the Americas
New York, NY 10013-2473 USA

Prehospital and Disaster Medicine (ISSN 1049-023X) is published bimonthly in the months of February, April, June, August, October, December, by Cambridge University Press for the World Association for Disaster and Emergency Medicine. Prehospital and Disaster Medicine incorporates the Journal of the World Association for Emergency and Disaster Medicine and the Journal of Prehospital Medicine.

Editorial Information: All manuscripts must be submitted through the Journal's online submission platform, ScholarOne Manuscripts: <http://mc.manuscriptcentral.com/pdm>.

2016 Subscription Information: Institutions print and electronic: US\$692.00 in the USA, Canada, and Mexico; UK£422.00+VAT elsewhere. Institutions electronic only: US\$512.00 in the USA, Canada, and Mexico; UK£312.00+VAT elsewhere. Individuals print and electronic: US\$201.00 in the USA, Canada, and Mexico; UK£123.00+VAT elsewhere. Individuals electronic only: US\$146.00 in the USA, Canada, and Mexico; UK£83.00+VAT elsewhere. Single Part: US\$133.00 in the USA, Canada, and Mexico; UK£81.00+VAT elsewhere. Prices include postage and insurance. Airmail or registered mail is extra. Back volume prices are available upon request. Claims of non-receipt or damaged issues must be filed within three months of cover date.

Comprehensively indexed by the National Library of Medicine (MEDLINE), Cumulative Index to Nursing and Allied Health (CINAHL) and Health Star Cumulative Index. The database is available online via BRS, Data-Star, and DIA-LOG, and on CD-ROM through CD Plus, Compact Cambridge and Silver Platter. Abstracts and search capability available on the Internet at <http://journals.cambridge.org/PDM>.

Copyright © 2016 by the World Association for Disaster and Emergency Medicine.

Cover Artwork

View From a Café in Florence, Soft Pastel by Sue Lewis

Sue Lewis grew up in rural Dane County, Wisconsin (USA), an area of great natural beauty. Her goal is to create art reflecting her conviction that in this artificial and negative world, we can find peace, restoration, and hope in the natural beauty around us.

Sue is a self-taught artist, always seeking to increase her skills through workshops and individual mentoring by other artists. Graduating from Edgewood College (Madison, Wisconsin USA) with a Bachelor of Arts degree in Nursing, Sue spent years working in Madison hospitals, home health nursing, and clinics before retiring in 2009 and finally being free to spend as much time as she wants creating art and encouraging others to develop their own creativity.

She is a member and past Co-President of the Madison Art Guild and a past member of the Wisconsin Regional Art Association. Her paintings have won awards at the local level through the Madison Art Guild and at the local and state levels in the Wisconsin Regional Art Association.

Her work can be viewed at her website: 1-sue-lewis.pixels.com

EDITOR-IN-CHIEF

Samuel J. Stratton, MD, MPH
University of California-Los Angeles
Los Angeles, California, USA

EMERITUS**EDITOR-IN-CHIEF**

Marvin L. Birnbaum, MD, PhD
University of Wisconsin-Madison
Madison, Wisconsin, USA

MANAGING EDITOR

Ellen Johnson, MS

SECTION EDITORS*Emergency Medical Services*

**Darren Walter, FRCS(Ed)
FCEM, FIMC**
University Hospital South
Manchester
Manchester, UK

Humanitarian Affairs

**Frederick M. Burkle, MD,
MPH, DTM**
Harvard Humanitarian Initiative
Harvard University
Cambridge, Massachusetts, USA

Mass Gathering Medicine

Paul Arbon, PhD
School of Nursing and Midwifery
Flinders University
Adelaide, South Australia

Nursing

**Elaine Daily, RN, BSN,
FCCM, FAHA**
Madison, Wisconsin, USA

Oceania

Graeme McColl
Christchurch, New Zealand

Psychosocial

Gloria Leon, PhD
University of Minnesota
Minneapolis, Minnesota USA

ASSOCIATE EDITORS

David A. Bradt, MD, MPH
Royal Melbourne Hospital
Melbourne, Australia

Wolfgang F. Dick, MD, PhD
Mainz, Germany

Kimball Maull, MD, FACS

Department of Surgery
Hamad General Hospital
Doha, Qatar

Steven Rottman, MD

University of California-Los Angeles
Los Angeles, California, USA

Geert Synaeve, MD

Brussels, Belgium

EDITORIAL BOARD

Carol Amaratunga, PhD

School of Child and Youth
Development
University of Victoria Research
Association of the Justice
Institute of British Columbia
Victoria BC, Canada

Frank Archer, MD

Department of Community
Emergency Health &
Paramedic Practice
Monash University
Melbourne, Australia

Jeffrey Arnold, MD

Department of Emergency
Medicine
Santa Clara Valley Medical
Center
San Jose, California, USA

Yaron Bar-Dayan, MD, MHA

Israeli Defense Forces Home
Front Command
Or-Yehuda, Israel

Joost Bierens, MD, PhD

Amsterdam, The Netherlands

Tareg Bey, MD

Saudi Arabia

Richard A. Bissell, PhD

Center for Emergency Education
and Disaster Research
University of
Maryland-Baltimore
Baltimore, Maryland, USA

Felipe Cruz-Vega, MD

Office of Social Security
Mexico City, Mexico

**Robert A. DeLorenzo, MD,
MSM, FACEP**

Medical Corps
United States Army
San Antonio, Texas, USA

Claude de Ville de Goyet, MD

Brussels, Belgium

Judith Fisher, MD

Washington, DC, USA

Erik S. Gaull

George Washington University
Washington, DC, USA

Michael Gunderson

Integral Performance Solutions
Lakeland, Florida, USA

Pinchas Halpern, MD

Critical Care and Emergency
Medicine
Tel Aviv University
Tel Aviv, Israel

Keith Holtermann, MD

George Washington University
Washington, DC, USA

Mark Johnson, MPA

Juneau, Alaska, USA

Mark Keim, MD

Centers for Disease Control and
Prevention
Atlanta, Georgia, USA

Todd J. LeDuc, EMT-P

Broward Sheriff Fire Rescue
Ft. Lauderdale, Florida, USA

Lidia Mayner, PhD

School of Nursing and Midwifery
Flinders University
Adelaide, South Australia

**Andrew Milsten, MD, MS,
FACEP**

University of Massachusetts
Emergency Medicine
Worcester, Massachusetts, USA

Jerry Overton

IAED Emergency Clinical
Advice System & Standards
Board
Salt Lake City, Utah, USA

Paul Paris, MD

Center for Emergency Medicine
University of Pittsburgh
Pittsburgh, Pennsylvania, USA

**Lynda Redwood-Campbell,
MD, MPH**

Department of Family Medicine
McMaster University
Hamilton, Ontario, Canada

Edward Ricci, PhD

Behavioral and Community
Health Sciences
University of Pittsburgh
Pittsburgh, Pennsylvania, USA

Leonid Roshal, MD

Institute of Pediatrics
Academy of Medical Sciences
Moscow, Russia

Don Schramm

Disaster Management Center
University of Wisconsin-Madison
Madison, Wisconsin, USA

James M. Shultz, PhD

Center for Disaster & Extreme
Event Preparedness
University of Miami
Miami, Florida, USA

**Wayne Smith, BSc, MChB,
EMDM, FCEM(SA)**

Division of Emergency Medicine
University of Cape Town
Cape Town, South Africa

Knut Ole Sundnes, MD

Baerum Hospital
Solo, Norway

Takashi Ukai, MD

Hyogo Emergency Medical
Center
Hyogo, Japan

Michael Van Rooyen, MD

Harvard Humanitarian Initiative
and Department of Emergency
Medicine, Brigham and
Women's Hospital
Boston, Massachusetts, USA

Richard Zoraster, MD, MPH

Kaneohe, Hawaii, USA

Aims and Scope: The mission of *Prehospital and Disaster Medicine* (PDM) is the distribution of information relevant to the practice of out-of-hospital and in-hospital emergency medical care, disaster health, and public health and safety. PDM provides an international forum for the reporting and discussion of scientific studies, both quantitative and qualitative, that have relevance to the above practices. The major objectives are: (1) the improvement of the types and quality of the care delivered to patients with perceived medical emergencies and to victims of multi-casualty accidents or disasters, including the public health and safety aspects of such events; and (2) the prevention and/or mitigation of the occurrence of such events and of the effects of these events upon the human population and environment.

Editorial Office: Prehospital and Disaster Medicine, 3330 University Avenue, Suite 130, Madison, Wisconsin 53705, USA. Telephone: (+1) (608) 819-6604; Facsimile (+1) (608) 819-6055; E-mail: pdm@wadem.org

Publishing, Production, and Advertising Office: Cambridge University Press, 32 Avenue of the Americas, New York, NY 10013-2473, United States; USAdSales@cambridge.org.

Subscription Offices: (for USA, Canada, and Mexico) Cambridge University Press, 32 Avenue of the Americas, New York, NY 10013-2473, United States; (for UK and elsewhere) Cambridge University Press, The Edinburgh Building, Shaftesbury Road, Cambridge CB2 8RU, UK.

2016 Subscription Information: *Prehospital and Disaster Medicine* (Print ISSN 1049-023X; Electronic ISSN 1945-1938) is published bimonthly in the months of February, April, June, August, October, and December by Cambridge University Press, 32 Avenue of the Americas, New York, NY 10013-2473, United States/Cambridge University Press, The Edinburgh Building, Shaftesbury Road, Cambridge CB2 8RU, UK for the World Association for Disaster and Emergency Medicine. 2014 Annual subscription rates: Institutions print and electronic: US\$659.00 in the USA, Canada, and Mexico; UK£402.00+VAT elsewhere. Institutions electronic only: US\$486.00 in the USA, Canada, and Mexico; UK£297.00+VAT elsewhere. Individuals print and electronic: US\$191.00 in the USA, Canada, and Mexico; UK£117.00+VAT elsewhere. Individuals electronic only: US\$139.00 in the USA, Canada, and Mexico; UK£79+VAT elsewhere. Single Part: US\$121.00 in the USA, Canada, and Mexico; UK£74.00+VAT elsewhere. Prices include postage and insurance. Airmail or registered mail is extra. Back volume prices are available upon request.

Submissions: All manuscripts must be submitted through the Journal's online submission platform, ScholarOne Manuscripts, at <http://mc.manuscriptcentral.com/pdm>. Please review the Author Instructions and Author Checklist available online before finalizing a submission.

Indexing: National Library of Medicine (MEDLINE), Cumulative Index to Nursing and Allied Health (CINAHL), and Health Star Cumulative Index.

© **World Association for Disaster and Emergency Medicine 2016.** All rights reserved. No part of this publication may be reproduced, in any form or by any means, electronic, photocopying, or otherwise, without permission in writing from Cambridge University Press. Policies, request forms, and contacts are available at: <http://www.cambridge.org/rights/permissions/permission.htm>. Permission to copy (for users in the United States) is available from Copyright Clearance Center Transactional Reporting Service, 222 Rosewood Drive, Danvers, MA 01923, USA. <http://www.copyright.com>, email: info@copyright.com.

Printed in United States of America on acid-free paper.

Postmaster: Send address changes in the USA and Canada to *Prehospital and Disaster Medicine*, Subscription Department, Cambridge University Press, 32 Avenue of the Americas, New York, NY 10013, USA.

Periodical postage rate paid at New York, NY and additional mailing offices.

Call for Artwork

The cover design of *Prehospital and Disaster Medicine* calls for a photograph of relevant artwork.

If you have access to artwork that you think may be appropriate, please submit a high-resolution .TIF or .EPS file to:

Ellen Johnson, Managing Editor
E-mail: eswenson@wadem.org

All submissions will be evaluated by a panel of judges.
Items not selected will be returned to the sender.