

2004 SHEA/CDC Training Course in Hospital Epidemiology**Program**

The program will be held May 22-25, 2004, at the Boston Cambridge Marriott. Denise Cardo, MD, Loreen A. Herwaldt, MD, Timothy W. Lane, MD, and Gina Pugliese, RN, MS, will co-chair this program. The program, developed by the Society for Healthcare Epidemiology of America (SHEA) and the Centers for Disease Control and Prevention (CDC), is intended for infectious disease fellows and new hospital epidemiologists. It emphasizes hands-on exercises in which participants work in small groups to detect, investigate, and control epidemiological problems encountered in the hospital setting. These work sessions are supplemented with lectures and seminars covering fundamental aspects of hospital epidemiology and surveillance, epidemic investigation, transmission, and control of nosocomial infections, disinfection and sterilization, employee health, isolation systems, regulatory compliance, and quality improvement.

Who Should Attend

You should attend if you are a hospital epidemiologist or an infection control practitioner or if you are looking for a course that will provide you with the most current information concerning infection control practices and epidemiological methods in health care. This fundamental program will provide you with opportunities to find solutions in real situations that will occur in the hospital setting. Intensive problem solving sessions are supplemented with lectures and seminars presented by leading authorities.

Jonathan Freeman Scholarships

Five (5) Jonathan Freeman Scholarships in the amount of \$500 each will be awarded to infectious disease fellows to defray expenses incurred in attending the training program. In addition to the \$500 amount, each scholarship winner will receive complimentary registration in the training course.

Interested fellows must submit a letter of no more than one (1) page describing why they would like to have additional training in hospital epidemiology. A letter

from the fellow's program director outlining the applicant's qualifications and suitability for the course also is required. The deadline for receipt of scholarship applications for the course is April 9, 2004. The SHEA Educational Activities Committee will select the scholarship recipients based on review of these letters. Winners will be notified before the end of April.

Nominations

Please send scholarship applications to:
SHEA/CDC
66 Canal Center Plaza, Suite 600
Alexandria, VA 22314

Fees

Individual Registrants	\$625
Fellows in Infectious Disease	\$450

Credits

The Society for Healthcare Epidemiology of America (SHEA) is accredited by the Accreditation Council for Continuing Medical Education to sponsor continuing medical education for physicians.

The Society for Healthcare Epidemiology of America designated this continuing education activity for up to 27 hours in Category 1 of the Physician's Recognition Award of the American Medical Association.

General Course Information

Information regarding the schedule, hotel and travel accommodations, discount airfare, and course fees are available from SHEA (703) 684-1006. NOTE THAT APPLICATION FOR A SCHOLARSHIP DOES NOT CONSTITUTE ENROLLMENT IN THE PROGRAM. This must be done separately.

Submit Manuscripts Online

INFECTION CONTROL AND HOSPITAL EPIDEMIOLOGY is pleased to announce it is now processing manuscript submissions via **Rapid Review** – a comprehensive tool to manage manuscripts, reviewers, correspondence and workflow. Submitting manuscripts has never been easier!

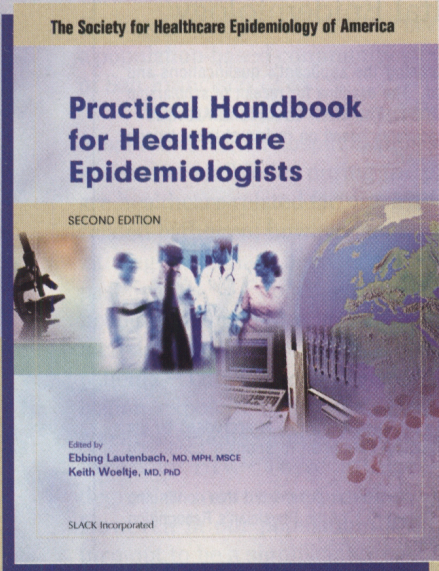
Take advantage of these benefits:

- Quicker and easier manuscript submission
- Immediate acknowledgement of submissions
- Authors can check an article status online
- Password-protected site for privacy

To submit your manuscripts online, visit
RapidReview.com

Where Do You Begin?

NEW EDITION!



Practical Handbook for Healthcare Epidemiologists, Second Edition

Ebbing Lautenbach, MD, MPH, MSCE, *University of Pennsylvania, Philadelphia, PA* and
Keith Woeltje, MD, PhD, *Medical College of Georgia, Augusta, GA*
352 pp., Hard Cover, **Due Fall 2004**, ISBN 1-55642-677-1,
Order #16771, **\$94.95**

If you work in today's healthcare epidemiology programs you will need the latest edition of *Practical Handbook for Healthcare Epidemiologists, Second Edition*. Situations that are encountered daily can be challenging, and now the answers needed are available in one solid resource.

Updated and revised, this **best selling** handbook is concise, user-friendly and will provide practical information regarding many aspects of establishing and managing a healthcare epidemiology program.

The Society for Healthcare Epidemiology of America (SHEA) has recruited recognized leaders in the field to share their expertise. They discuss overarching goals, as well as successful strategies for handling specific situations and problems. *This is the most complete hands-on source about healthcare epidemiology and infection prevention and control.*

A straight forward and practical guide, *Practical Handbook for Healthcare Epidemiologists, Second Edition* will be critical to establishing and operating a successful healthcare epidemiology and infection control program. Students, residents, fellows, and faculty will benefit as they learn in a productive manner what to expect in their future roles.

Topics Inside:

- How to negotiate with administration
- How to implement exposure workups
- Ethical decisions and application to infection control
- Extend infection control programs into long term care & outpatient facilities
- How to survive JCAHO and OSHA inspections

New to this edition:

- Patient safety
- Bioterrorism preparedness
- Antimicrobial resistance
- Hand hygiene

Buy the Book on CD-ROM!

Practical Handbook for Healthcare Epidemiologists, Second Edition PDF CD-ROM

CD-ROM, Due August 2004, ISBN 1-55642-699-2, Order #16992, \$94.95

Practical Handbook for Healthcare Epidemiologists, Second Edition is also available in a PDF CD-ROM format. The CD-ROM contains all the text, all the images, every single element of the book available in an easy-to-carry CD-ROM!

Buy the Book or Buy the CD-ROM – same great info – two great formats!




Pre-Order and Save 10%!

Order Form

QUANTITY	TITLE	ORDER #	PRICE
	Practical Handbook for Healthcare Epidemiologists	16671	\$94.95
	Practical Handbook for Healthcare Epidemiologists, Second Edition PDF CD-ROM	16992	\$94.95

Subtotal	\$
Discount (if applicable)	()
Handling Charge	\$5.00
CA, CO & NJ Sales Tax*	\$
TOTAL	\$

Name _____
Address _____
City _____ State _____ Zip _____
Phone _____ Fax _____
Email _____

- Check enclosed (*Payable to SLACK Inc*)
 Purchase Order or Bill Me (*Please attach this order form to purchase order*)
 Charge my:   

Account # _____ Exp. Date _____

Signature _____

*Purchases in CA, CO & NJ are subject to tax. Please add applicable state and local taxes.

Call to order: 800-257-8290 or 856-848-1000

Visit our Website at: www.slackbooks.com

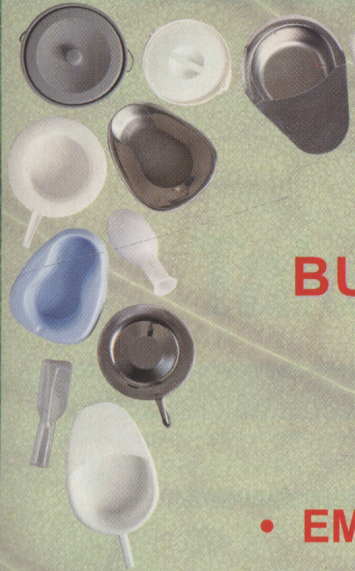
SLACK Incorporated
Professional Book Division
6900 Grove Road
Thorofare, New Jersey
08086-9864

FAX: 856-853-5991

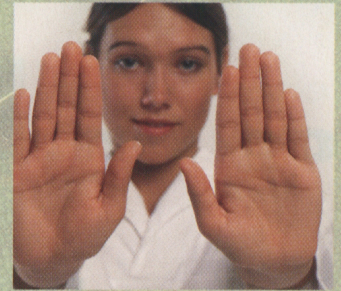
Send e-mail to: orders@slackinc.com

Published online by Cambridge University Press. Shipping charges may apply. Shipping and handling charges are non-refundable.

CODE: 1A933



A BEDPAN MAY BE PATIENT SPECIFIC BUT IS YOUR CAREGIVER?



Having patient specific bedpans is not a guarantee against cross contamination.

• EMPTY • FLUSH • CLEAN • DISINFECT



- ✓ Reduce the risk of splatter
- ✓ Reduce cross contamination
- ✓ Improve working conditions
- ✓ Save time
- ✓ Save money



The ARJO *Flusher Disinfectors* empty, clean and thermally disinfect bedpans and urinals so YOU don't have to!

Manually cleaning waste from bedpans, urinals and commodes increases the risk of infection throughout the facility. Contaminants will splatter and can be found on the **hands and uniforms** of the staff as well as on and around the toilet, sinks, walls and floors.

The re-usable bedpan of the future. Designed by ARJO with your patients and staff in mind. Durable, anatomically designed, and fitted with a lid for easy, safe, dignified handling.

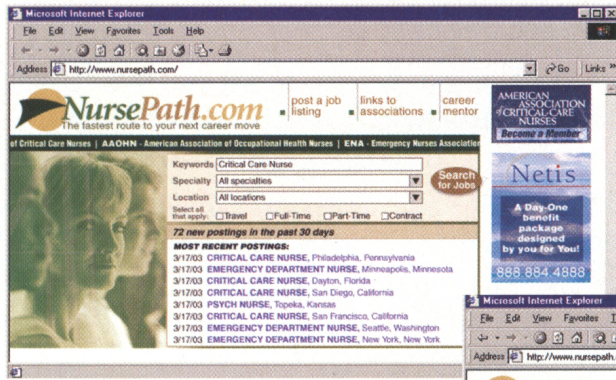


ARJO
ARJO

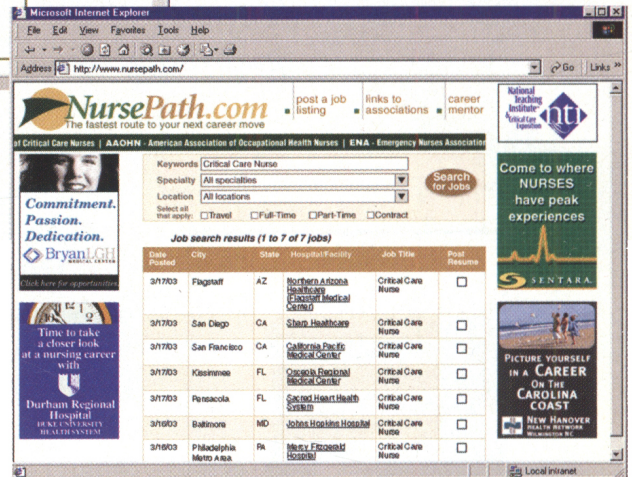
1-800-323-1245
www.arjo.com

**Call now to learn more about these systems
and which one is best for your facility.**

Step 1:
Log On.



Step 2:
See Jobs.



Step 3:
Get Job.

It's that easy!

NursePath.com
The fastest route to your next career move

- Daily job postings on the home page
- Search hundreds of jobs by title, location or hospital/facility
- Choose from the best career opportunities in nursing



Brought to you by

AMERICAN ASSOCIATION OF CRITICAL-CARE NURSES

JOURNAL OF Psychosocial Nursing AND MENTAL HEALTH SERVICES

JOURNAL OF NURSING EDUCATION

The Journal of Continuing Education in Nursing

JOURNAL OF GERONTOLOGICAL NURSING

The Official Journal of The Society for Healthcare Epidemiology of America
INFECTION CONTROL AND HOSPITAL EPIDEMIOLOGY




Take our temperature.

Which ads are hot?



Check our pulse.


Which ads make your heart beat faster?

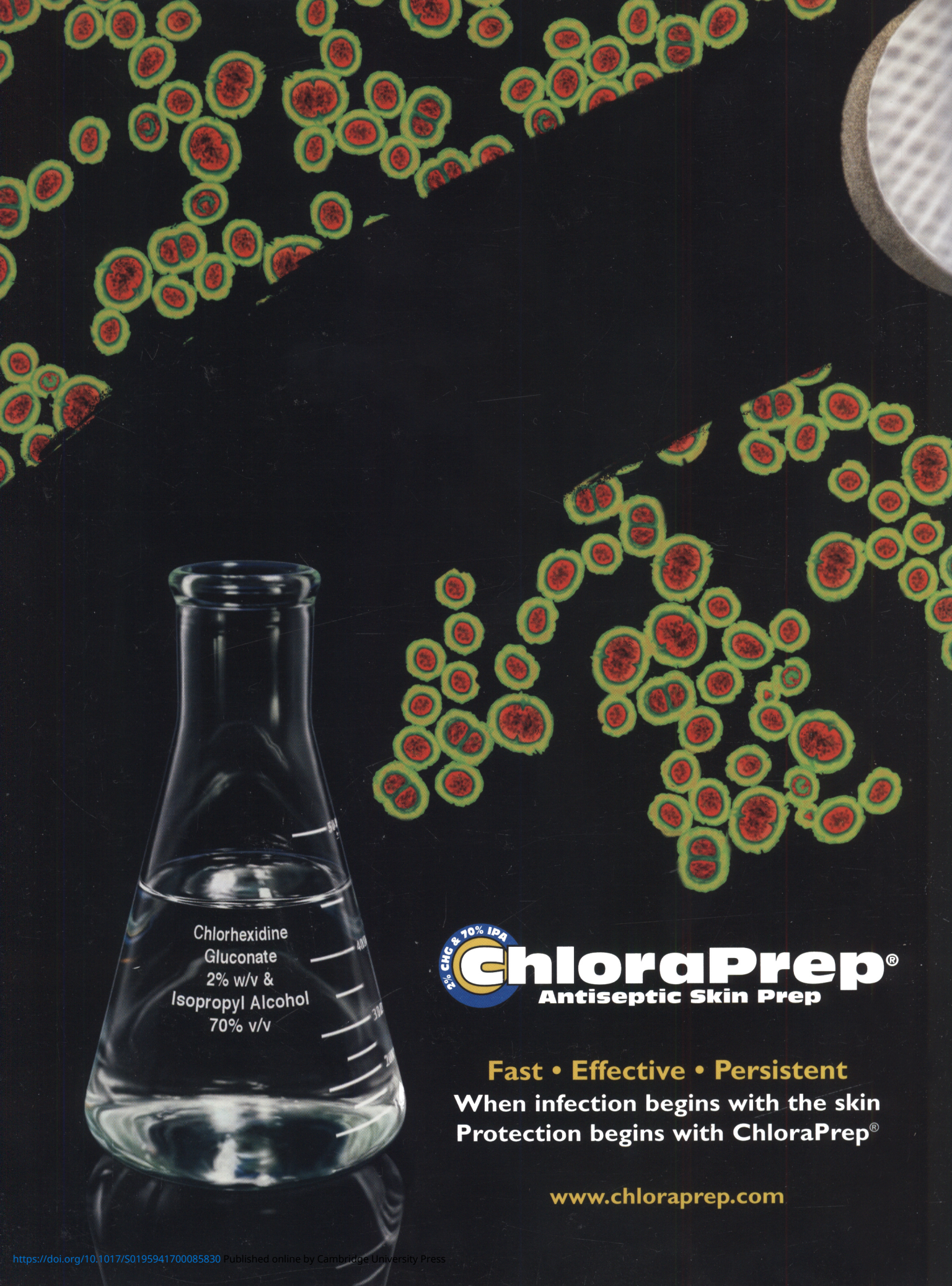


Make your diagnosis.

Give medical journal ads from 2003 a thorough online examination, and help enhance the quality of healthcare advertising. You'll be automatically entered to win a \$100 Amazon.com gift certificate.

Point, click & vote at www.docvote.com

The Association of Medical Publications 



Chlorhexidine
Gluconate
2% w/v &
Isopropyl Alcohol
70% v/v

Chloraprep[®]
Antiseptic Skin Prep

Fast • Effective • Persistent
When infection begins with the skin
Protection begins with Chloraprep[®]

www.chloraprep.com