

The JOURNAL of THE INSTITUTE OF NAVIGATION

VOL. 23, NO. 2

APRIL

1970

Navigation for Apollo Lunar Landings	131
J. P. MAYER AND R. K. OSBURN	
The Use of a Weather Radar as a Terrain Warning System	149
V. J. COX	
Temperature Trial Forecasting for S.S.T. Cruise Levels	164
W. WEHRY	
Integrated Navigation by Least Square Adjustment	174
K. RAMSAYER	
A Brief History of Nautical Logs to A.D. 1800	187
C. H. COTTER	
On the Stopping Distances of Giant Vessels	196
H. TANI	
Marketing a New Radar	212
J. H. BEATTIE	
Inertial Navigation for the Merchant Marine	221
D. A. VIDELO AND D. L. WRIGHT	
Rhumb-line Sailing with a Computer	233
R. J. TURNER	
The Torrey Canyon Commission of Inquiry	238
L. OUDET	

FORUM

Collision and the Perspective	251
F. C. BELL	
Distance Off by Vertical Sextant Angle	253
J. W. CROSBIE	
Captain Mário Gama's Direct Method for Star-sight Reduction	255
C. H. COTTER	
Amendments to the Rules	258
A. N. COCKCROFT	
Record	265
Reviews	266

THE INSTITUTE OF NAVIGATION
AT THE ROYAL GEOGRAPHICAL SOCIETY
1 KENSINGTON GORE LONDON SW7

JOHN MURRAY (PUBLISHERS) LTD., 50 ALBEMARLE STREET, LONDON W1

PRICE THIRTY SHILLINGS (£1.50)

THE INSTITUTE OF NAVIGATION

Patron

H.R.H. THE PRINCE PHILIP DUKE OF EDINBURGH, K.G., K.T., O.M.

OFFICERS AND COUNCIL 1969-70

President

A. Stratton

Vice-Presidents

G. E. Beck

Rear Admiral G. S. Ritchie, C.B., D.S.C.

Honorary Treasurer

F. A. Haworth

Chairman of the Technical Committee

Dr. G. E. R. Deacon, C.B.E., F.R.S.

Chairman of the Membership and Fellowship Committee

Captain V. A. M. Hunt, C.B.E.

Other Members of Council

J. H. Beattie

W. O. Broughton

W. J. Charnley

Captain C. H. Cotter

Group Capt. D. F. H. Grocott, C.B.E., A.F.C.

Captain R. Hart, C.B.E., D.S.O., D.S.C.

G. A. B. King

Captain F. L. Main

H. E. Smith

R. Whalley

Executive Secretary: M. W. Richey, M.B.E.

The Journal of the Institute of Navigation

THE *Journal* is published quarterly by the Institute and is edited by M. W. RICHEY. It contains original papers contributing to the science of navigation, including those presented at meetings of the Institute together with the ensuing discussion. In addition the *Journal* includes a record of current navigational work, reviews of important books, and other matters of concern to those interested in navigation. The views expressed in the *Journal* are not necessarily those of the Institute, or of any organization or department to which the authors may belong. In the case of some papers Crown Copyright may be reserved.

The *Journal* is issued free to all members of the Institute. It is sold to the public at thirty shillings per copy or, by subscription, at one hundred and twenty-five shillings per annum (post free) and may be obtained through all booksellers and John Murray (Publishers) Ltd., 50 Albemarle Street, London W1.

Contributions, which are welcomed from both members and non-members, should be addressed to the Editor.

Enquiries for advertising space should be addressed to the Institute offices.

The postal address of the Institute is:

The Institute of Navigation,
at The Royal Geographical Society,
1 Kensington Gore, London SW7

Telephone: 01-589 5021

Decca

world leaders in marine electronics

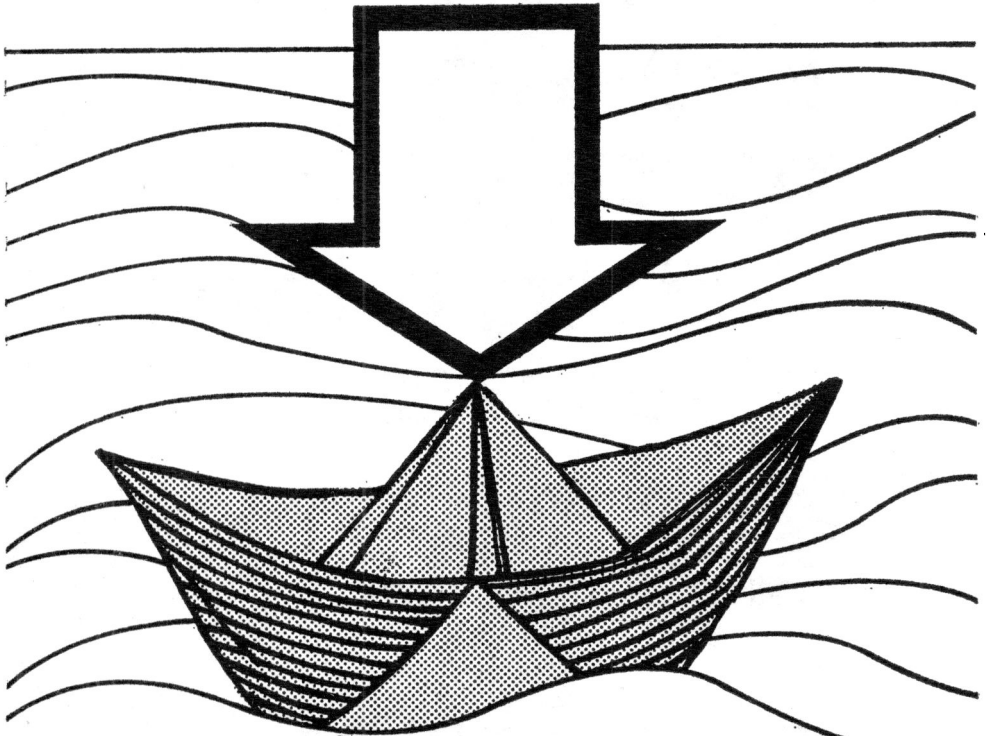


Decca Transar Radar
Decca ISIS 300 Integrated
Ship Instrumentation System
Decca Navigator System
Decca Arkas Automatic Pilot

Decca Radar Limited
The Decca Navigator Company Limited
Decca House, Albert Embankment
London SE1



true fix?



radiolocation **TORAN**

hydrography ■ oceanography
ship acceptance trials ■ maritime works
airborne surveys

fermont 1320



Radionavigation Department
12, rue Léonidas - Paris 14^e France
Telephone : 273-01-42

Kelvin Hughes for the wide ocean spaces (and very narrow waterways)

A complete range of equipment
for navigation, fish detection
and special applications

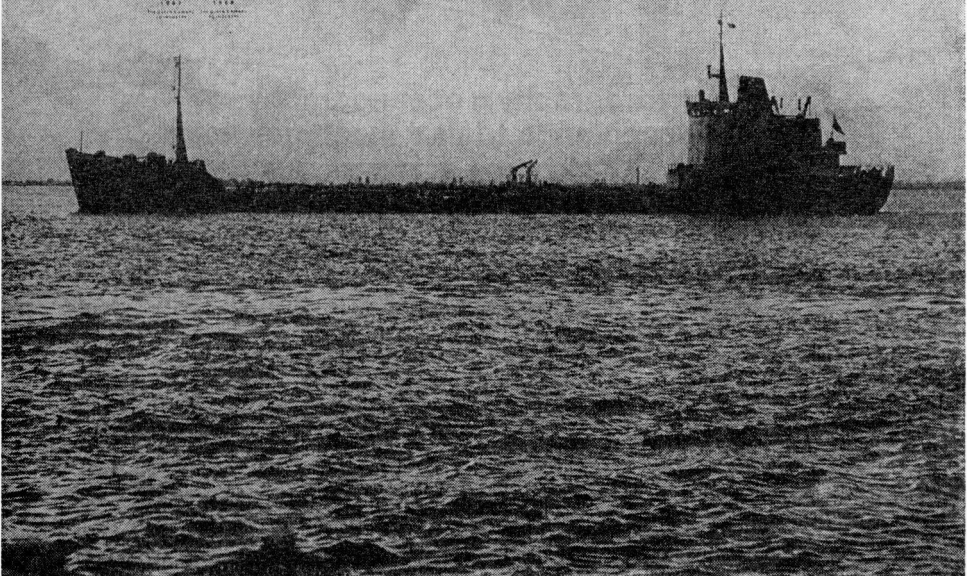
KELVIN HUGHES

A DIVISION OF SMITHS INDUSTRIES LIMITED

New North Road, Hainault, Ilford, Essex.

Tel: 01-500 1020

London Showroom: St. Clare House, Minories, E.C.3.



'NAVIGATION, U.S.A.'

Navigation, the quarterly Journal of the American Institute of Navigation, is available to members of this Institute at a reduced subscription of £2 a year. Volume 16, No. 4 (Winter 1969-1970) contains the following papers.

THE NAVIGATIONAL OR TRUE RADAR PLOT FOR COLLISION PREVENTION

Jack Pansmith

TALKING BEACON SYSTEM IN JAPAN

Tohru Tadano and Shosaku Itoh

YESTERDAY'S TRAINING - TOMORROW'S SHIPS

Capt. Robert M. Slack

POLAR FLIGHT

J. N. Portney

NRL-LSI MARK III AIRBORNE OMEGA SYSTEM

G. F. Sage

DERIVATION OF CIRCULAR FIXES IN HYPERBOLIC NAVIGATION SYSTEMS

Dr. Joseph L. Ryerson

USE OF LORAN IN THE RANGE-RANGE MODE

Dr. C. T. Kelley, Jr.

AIRBORNE OMEGA NAVIGATION SET

Donald B. Daniel

APPLICATIONS OF OMEGA POSITION LOCATION EXPERIMENT TO MARINE TRANSPORTATION

Francis J. Enge

MARINE INTEGRATED NAVIGATION SYSTEM

Nicholas S. Christopher

PRECOMP NAVIGATION

Capt. P. V. H. Weems, U.S.N. (Ret.)

THE INSTITUTE'S PROFESSIONAL FILE

Notes and Comment

Index to Volume 16

'Electronic Chernikeeff'

The ideal Log for all Mercantile purposes—backed by almost 50 years actual experience in the design and manufacture of Impeller Logs.

Log makers to the British Admiralty and Overseas Navies for more than 40 years.

- 1 Accurate and dependable at all speeds down to 'bare steerage way'.
- 2 Suitable for Ship's Side or Bottom Mounting—no loss of accuracy.
- 3 The Retractable Log Tube can be supplied with remotely controlled 'raising and lowering' system.
- 4 Has outputs for True-Motion Radar, Data Logging, Decca ISIS-300.
- 5 Lower installation costs—simple maintenance.

MARCONI-MARINE world wide service is available to users.

Sole Makers

**The Submerged Log Company (1962) Limited,
565/569 High Road, Chiswick, London, W.4, England**

Telephone: CHISWICK 01-9946685/6

Telegrams: CHERLOG LONDON W.4

Authoritative Sailing-Ship Books

COOLIE SHIPS AND OIL SAILERS

This book is a record of two special phases of sea life in Sailing Ships

190 Pages 9½" × 7¼" 56 Illustrations

42/- (per post 46/6)

THE COLONIAL CLIPPERS

The Great Wooden Ships of the Blackwall and other lines

400 Pages 9½" × 7¼" 81 Illustrations, 4 Plans

54/- (per post 58/6)

THE CHINA CLIPPERS

A History of the celebrated Clipper Ships in the Chinese Opium and Tea Trades

310 Pages 9½" × 7¼" 34 Illustrations

50/- (per post 54/6)

THE LOG OF THE "GUTTY SARK"

The most authentic work, compiled from her log books and captain's abstracts

344 Pages 9½" × 7¼" 52 Illustrations, 9 Plans

70/- (per post 74/6)

THE LAST OF THE WINDJAMMERS

Vol. I. The Sailing Ships of the Seventies-Eighties

535 Pages 9½" × 7¼" 126 Illustrations, 17 Plans

72/- (per post 76/6)

Vol. II. The Deep-Water Sailing Ships, 1888-1928

470 Pages 9½" × 7¼" 174 Illustrations, 17 Plans

60/- (per post 64/6)

By BASIL LUBBOCK

All Lubbock's work is the product of original and comprehensive research. These books are recommended without reserve to the student of the sailing-ship

MASTING AND RIGGING

The Clipper Ship and Ocean Carrier

66/- (per post 70/6)

SAILING SHIP RIGS AND RIGGING

With authentic plans of famous vessels.

40/- (per post 41/9)

PLANK-ON-FRAME MODELS and Scale Mastig and Rigging

Vol. I. 40/- (per post 41/9) Vol. II. 40/- (per post 41/9)

By HAROLD A. UNDERHILL

A leading authority on Sail and Ship Modelling

Catalogue "N" giving further titles and details, free on request

BROWN, SON & FERGUSON, LTD.,
52, DARNLEY STREET, GLASGOW, S.1.

THE INTERNATIONAL HYDROGRAPHIC BUREAU

Avenue Président J. F. Kennedy, MONACO

publishes

twice a year, in January and July,
an English and a French edition of

THE INTERNATIONAL HYDROGRAPHIC REVIEW

This publication contains articles of topical interest on hydrography, hydrographic surveying and related subjects.

Each number contains an average of 160 pages, 18 × 27 cm., and numerous illustrations.

Price per number 50/- or \$6 (U.S.), post free in Europe.

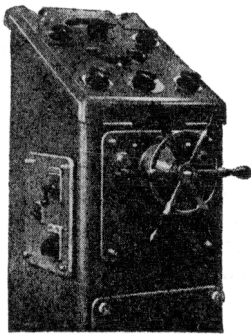
Orders should be sent direct to the Bureau's Headquarters in Monaco, but payments can be made to the Bureau's account at Barclays Bank Ltd., Chief Foreign Branch, 152-156 Upper Thames Street, London, E.C.3. Specify English or French edition when ordering.

A reduction of 25% on the price quoted is allowed to booksellers. A reduction of 30% is granted to naval or merchant marine officers of the Bureau's Member States, provided the order is sent direct to the Bureau.



STEERABILITY

ASK SPERRY ABOUT RATE PILOTS...



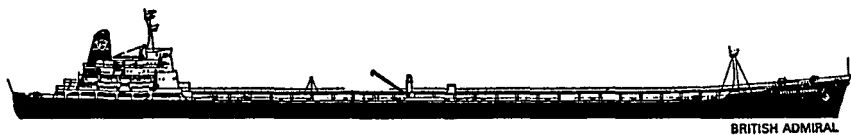
Modern high-efficiency hull forms frequently do everything except steer well, particularly at low speeds. Our new range of Rate Pilots detects an incipient swing long before the human eye or standard equipment can perceive it, immediately applying a *little* amount of rudder in ample time to prevent dangerous and wasteful swings developing. First in the new range of Sperry Rate Pilots is the Twin Rate Duplex.

COMPUTER ANALYSIS OF HULL & STEERING CHARACTERISTICS

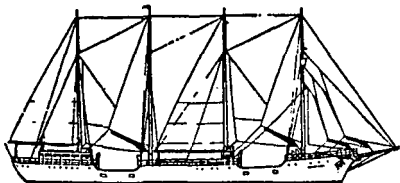
Sperry's new range of Rate Gyro Pilots is backed by a unique theoretical study/computer capability, enabling hull performance to be simulated well in advance, at the same time highlighting unusual steering characteristics; this enables corrective measures to be taken at the design stage, to ensure directional stability and perfect steering control with minimum use of rudder.

SPERRY

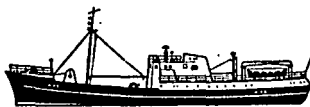
GYROSCOPE DIVISION
BRACKNELL BERKSHIRE ENGLAND



BRITISH ADMIRAL



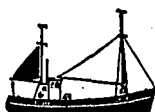
ALBATROSS
Training Ship



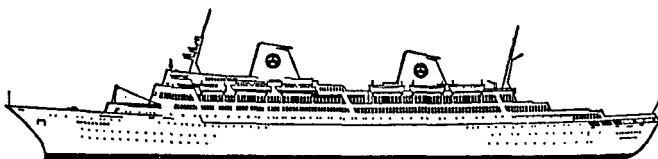
SIR WILLIAM HARDY
Fishery Research



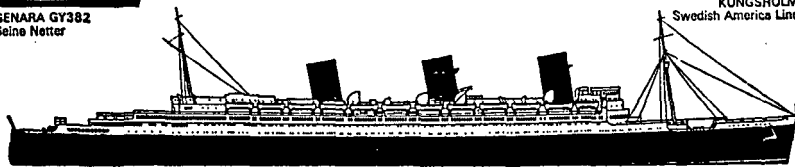
ORIANA



GENARA GY382
Seine Netter



KUNGSHOLM
Swedish America Line



QUEEN MARY

Illustrated by...

A Growing Tradition...

Over 15,000 ships of all types and sizes, from the largest super-tankers to small fishing vessels, today rely on Decca for accurate navigation and economical operation. Now more and more ships will benefit even more widely as a result of the extensive new coverage now being set up in Australia, the Baltic, South Africa, Japan and the United States.

We are proud to be associated with the wide variety of famous, and not so famous, ships that have relied on the Decca Navigator since it was first introduced commercially over 20 years ago.



The Decca Navigator Company Limited 9 Albert Embankment London SE1

A



The *Torrey Canyon* stranded on the Seven Stones. An analysis of the facts of the disaster containing a strong criticism of the Commission of Inquiry appears on page 238. (Photo, *The Times*.)