



An ESEM  
at low  
Vacuum SEM prices?

Yes!

Affordable

Don't be confused by what other low vacuum SEM's say they can do. ESEM is the affordable microscope for today and has the best return on that investment tomorrow. ESEM is the difference in low vacuum SEM technology; innovation and experience... we lead, they follow! ESEM keeps wet samples wet, not freeze dried. ESEM has high resolution imaging in all modes of operation, not just one. Ask us to show you.

**Benefits**

- ESEM with Windows NT is your investment in the future
- ESEM can analyze your samples any way you want
- ESEM means owning the highest standard in SEM technology

Philips ESEM, the universal solution.

FEI Company  
7451 NW Evergreen Parkway  
Hillsboro, Oregon 97124-5830  
Tel: 503 640 7500  
Fax: 503 640 7509  
Internet: www.feic.com



PHILIPS

Let's make things better.

Circle Reader Inquiry #1

# You Can Afford This

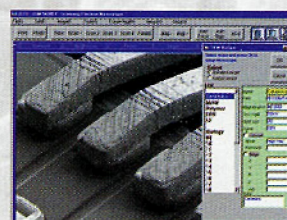
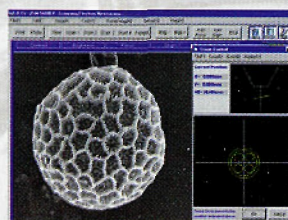
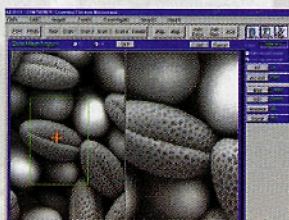
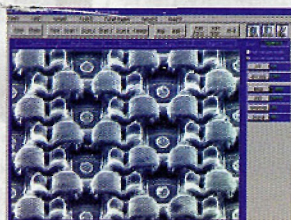
## PC SEM



That's right,  
you can get the  
quality of a JEOL  
SEM now for under  
**\$80,000!**  
If leasing this means  
around \$1,500 per  
month.

## JSM-5600 & JSM-5600LV

### Multi-Purpose and Low Vacuum Scanning Electron Microscope



All screens are clear and simple allowing easy system management and image optimization.

- ▶ **Based on a Simple PC Interface.**
- ▶ **Intuitive Operation with a Mouse Alone.**
- ▶ **No Nonsense Transition Between Conventional and Low Vacuum Modes.**
- ▶ **Built-in DTP System Allows Quick and Easy Report Generation and Printing.**
- ▶ **A Special High Sensitivity Detector Allows High Image Quality In All Modes.**

The new JSM-5600 and JSM-5600LV Scanning Electron Microscope was designed from the ground up as a PC SEM. This means that it can be controlled completely and efficiently from only the keyboard

and mouse. Keeping in mind the wide variety of preferences for controlling various aspects of an SEM we have also included an optional knobset for multitasking and fine control. You choose.

If you are currently in the market for a high end conventional or low vacuum SEM and need to combine state-of-the-art electronics with the versatility of computer control, we would like to invite you to come to our Applications Facility so that we can prove to you that it really is "As Easy As It Looks".

JEOL USA, Inc., 11 Dearborn Road, Peabody, MA 01960  
Tel: 978/535-5900 • Fax: 978/536-2205  
Email: eod@jeol.com • WEB: <http://www.jeol.com>

# JEOL

Circle Reader Inquiry #3