

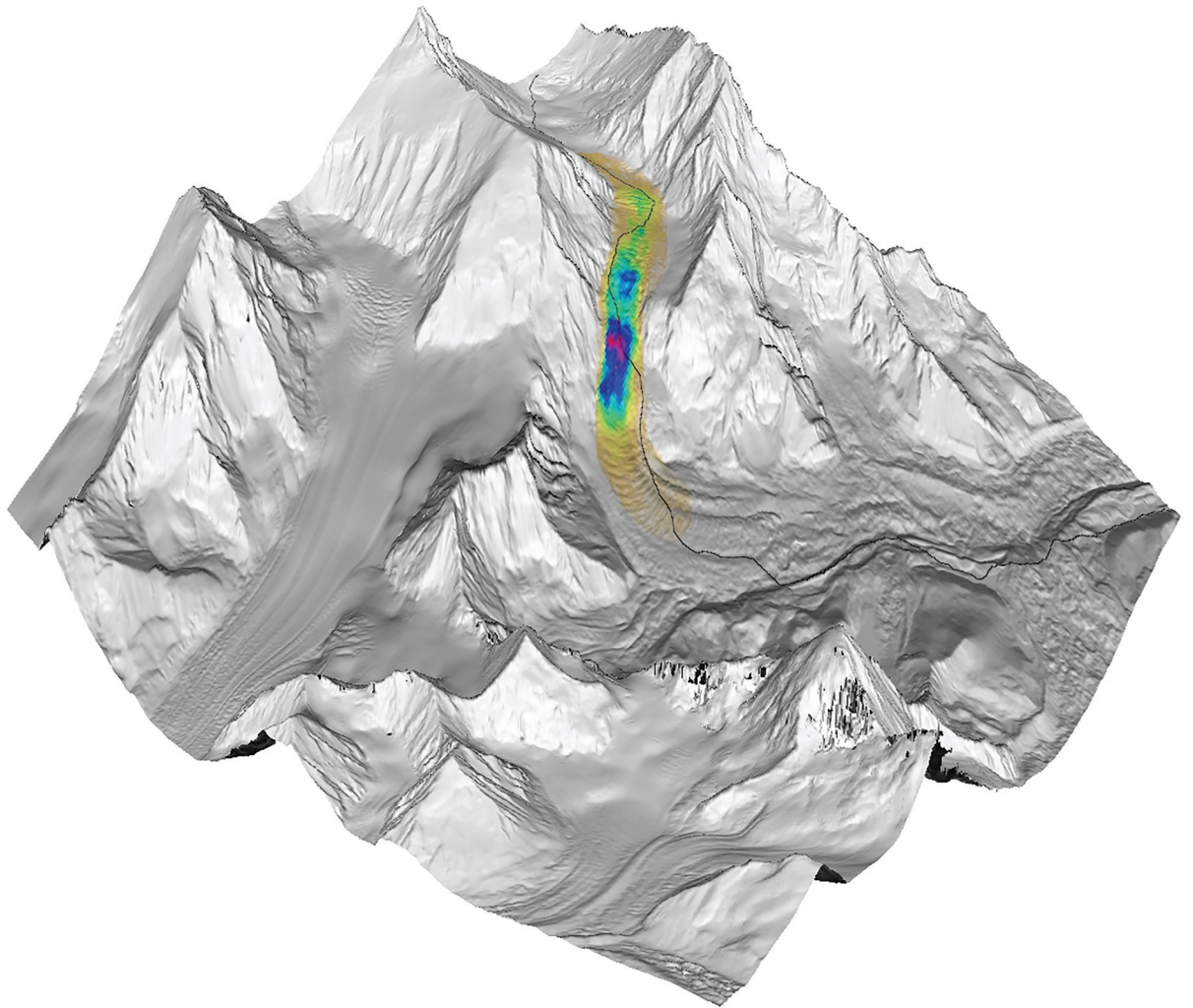
ISSN: 0022-1430



Vol 66 No 260

*Journal of*  
**GLACIOLOGY**

Published for the International Glaciological Society, Cambridge, UK



# International Glaciological Society

High Cross, Madingley Road, Cambridge CB3 0ET

## JOURNAL OF GLACIOLOGY

### Chief Editor

H Jiskoot

### Emeritus Chief Editor

JG Cogley  
TH Jacka

### Associate Chief Editors

N Eckert  
R Greve  
F Pattyn

### Scientific Editors

A Banerjee  
I Barr  
R Bhambri  
KA Cameron  
R Carr  
W Colgan  
F Cottier  
B Csathó  
N Cullen  
SH Faria  
HA Fricker  
NF Glasser  
A Graham  
I Hewitt  
E Isaksson  
SJ Jones  
J Kingslake  
M Koutnik  
B Kulesa  
S O'Neel  
S Rasmussen  
A Rempel  
M Schaefer  
C Schneider  
D Schroeder  
JM Shea  
D Shugar  
M Siegfried  
C Tijm-Reijmer  
A van Herwijnen

## INTERNATIONAL GLACIOLOGICAL SOCIETY

Founder: G Seligman

### President

FJ Navarro

### Vice-Presidents

G Flowers  
CL Hulbe  
J Stroeve

### Secretary General

MM Magnússon

### Membership and Accounts Manager

LM Buckingham

## INTERNATIONAL GLACIOLOGICAL SOCIETY

The Society was founded in 1936 to provide a focus for individuals interested in practical and scientific aspects of snow and ice. Membership is open to all individuals who have a scientific, practical or general interest in aspects of snow and ice study.

Papers on glaciology are printed in the *Journal of Glaciology*, which is published six times a year. The Society also publishes the *Annals of Glaciology*, a peer-reviewed, thematic journal, two to four times a year. The Society's news bulletin, *ICE*, is published three times a year.

The Society sponsors symposia, meetings and workshops in many countries throughout the year.

*Journal of Glaciology* publishes original articles and letters concerning scientific research into any aspect of ice and snow, and interactions between ice, snow, climate and other environmental phenomena including the biosphere and permafrost. Research techniques described in the Journal include, for example, field studies, remote sensing, computer modelling and laboratory studies. Research topics include the nature of and changes in mountain glaciers and ice sheets, including former ice sheets. For example, ice cores extracted from the glaciers and ice sheets reveal detailed information on past atmospheric composition and climate, and changes in the extent and thickness of the ice sheets are also related to climate change. The physical, chemical and crystallographic properties of ice and snow are included, especially but not only as they relate to the flow of ice and to past climate. The Journal also publishes studies of sea ice, and of icebergs, along with their interactions with climate on shorter time scales, and with the ocean. Snow and avalanche research is included in the Journal, with several recent articles investigating avalanche dynamics. Snow and ice on other planets is also within the realm of the Journal of Glaciology, as are studies of atmospheric ice.

The table of contents is printed on the back cover.

Published for the International Glaciological Society, Cambridge, UK by Cambridge University Press

Printed in the UK by Bell and Bain Ltd.