



The Weak b -principle: Mumford Conjecture

Rustam Sadykov

Abstract. In this note we introduce and study a new class of maps called oriented colored broken submersions. This is the simplest class of maps that satisfies a version of the b -principle and in dimension 2 approximates the class of oriented submersions well in the sense that every oriented colored broken submersion of dimension 2 to a closed simply connected manifold is bordant to a submersion. We show that the Madsen–Weiss theorem (the standard Mumford Conjecture) fits a general setting of the b -principle, namely, a version of the b -principle for oriented colored broken submersions together with the Harer stability theorem and Miller–Morita theorem implies the Madsen–Weiss theorem.

1 Introduction

A smooth map of manifolds $f: M \rightarrow N$ is said to be an *immersion* if its differential is a fiberwise monomorphism $TM \rightarrow TN$ of tangent bundles. According to a remarkable theorem by Smale and Hirsch, the space of immersions $M \rightarrow N$ of given manifolds with $\dim M < \dim N$ is weakly homotopy equivalent to a simpler topological space of *formal immersions*, i.e., fiberwise monomorphisms $TM \rightarrow TN$. The Smale–Hirsch theorem was one of the primary motivations for the general Gromov *h-principle*: given a differential relation, the space of its solutions is weakly homotopy equivalent to the space of its formal solutions [9].

In [14] (for a short review, see [15]) I proposed a stable homotopy version of the *h-principle*, the *b-principle*, motivated by a series of earlier results including [1, 2, 5, 7, 11, 13, 16, 17, 19, 20]. Namely, with every open stable differential relation \mathcal{R} , there are associated a moduli space $\mathcal{M}_{\mathcal{R}}$ of solutions, a moduli space $h\mathcal{M}_{\mathcal{R}}$ of stable formal solutions, and a map $\alpha: \mathcal{M}_{\mathcal{R}} \rightarrow h\mathcal{M}_{\mathcal{R}}$. It turns out that $\mathcal{M}_{\mathcal{R}}$ is an H -space with a coherent operation, while $h\mathcal{M}_{\mathcal{R}}$ is an infinite loop space [14], whose stable homotopy type is relatively simple. The *b-principle* is the following conjecture.

The b -principle *The canonical map $\mathcal{M}_{\mathcal{R}} \rightarrow h\mathcal{M}_{\mathcal{R}}$ is a group completion.*

When it holds true, the *b-principle* allows us to perform explicit computations of invariants of solutions. On the other hand, the *b-principle* is true for most of the differential relations (see [14] and references above); notable exceptions are the differential relations of oriented submersions of positive dimensions d . In this important

Received by the editors August 13, 2014; revised January 5, 2015.

Published electronically September 7, 2015.

2010 Mathematics Subject Classification: Primary: 55N20; Secondary: 53C23.

Keywords: generalized cohomology theories, fold singularities, h -principle, infinite loop spaces.

exceptional case the b -principle inclusion coincides with the Madsen–Tillmann map

$$\alpha: \bigsqcup \text{BDiff } M \rightarrow \Omega^\infty \text{MTSO}(d),$$

where $\bigsqcup \text{BDiff } M$ is the disjoint union of the classifying spaces of orientation preserving diffeomorphism groups of oriented closed (possibly not path connected) manifolds M of dimension d , while $\Omega^\infty \text{MTSO}(d)$ is the infinite loop space of the Madsen–Tillmann spectrum [7]. The standard Mumford conjecture asserts that for $d = 2$ and for a closed oriented surface F_g of genus g , the map $\alpha| \text{BDiff } F_g$ induces an isomorphism of rational cohomology rings in stable range of dimensions $* \ll g$. The Mumford conjecture was proved in the positive by Madsen and Weiss in [11], and later several other proofs of the Madsen–Weiss theorem were given in [4, 7, 8, 10].

Theorem 1.1 (Madsen–Weiss) *The rational cohomology ring of $\text{BDiff } F_g$ is a polynomial ring in terms of Miller–Morita–Mumford classes κ_i :*

$$H^*(\text{BDiff } F_g; \mathbb{Q}) \simeq \mathbb{Q}[\kappa_1, \kappa_2, \dots], \quad \text{for } * \ll g,$$

or, equivalently, the map $\alpha| \text{BDiff } F_g$ is a rational homology equivalence in a stable range of dimensions.

Remark 1.2 In fact, Madsen and Weiss proved a stronger statement, which, in particular, implies that the map $\alpha| \text{BDiff } F_g$ is an integral homology equivalence in a stable range.

In the current note we study a new class of flexible maps—the class of colored broken submersions—that provides a good approximation to the class of submersions, retains the sheaf property, and satisfies a version of the b -principle. More generally, we define colored broken solutions to an open stable differential relation; these enjoy many interesting properties including the following ones.

- For an open stable differential relation \mathcal{R} that *does not* satisfy the b -principle, a stable formal solution of \mathcal{R} can be integrated into a broken solution (Theorem 8.3). Thus, stable formal solutions differ from solutions only in broken components of the corresponding broken solutions.
- The pullback of a colored broken solution with respect to a generic smooth map is a colored broken solution. Thus, colored broken solutions form a class and therefore possess a moduli space (Section 8).
- The class of colored broken solutions satisfies the sheaf property, and therefore it is suitable for study by means of homotopy theory.
- Colored broken solutions of an open stable differential relation \mathcal{R} satisfy a weak b -principle (Theorem 8.3) even if solutions of \mathcal{R} do not.

To begin with we introduce the broken submersions/solutions in Section 2. In Sections 3–5 we recall the notions of a concordance and bordism. Next we show that the class of broken submersions approximates well the class of submersions (Sections 6–7); in Section 7 we essentially prove Theorem 1.3 (a complete proof is given in Section 10).

Theorem 1.3 *Let $f: M \rightarrow N$ be an oriented broken submersion of dimension 2 to a simply connected manifold N . Suppose that the image of broken components of f in N is disjoint from ∂N ; in particular, over ∂N the map f is a fiber bundle with fiber F_g . Suppose that $g \gg \dim N$. Then f is bordant to a fiber bundle by a bordism that is a broken submersion itself.*

Theorem 1.3 relies heavily on the Harer stability theorem, and its proof is very much in the spirit of a singularity theoretic argument by Eliashberg, Galatius, and Mishachev in [4]. Next we review the weak b -principle (Section 8), and introduce the colored broken submersions (Section 9). The moduli space \mathcal{M}_b of colored broken submersions is an H -space with coherent operation. Its classifying space $B\mathcal{M}_b$ is known; it has essentially been determined in [7] (for a proof in present terms (see [14])). Finally, in Section 10 we show that in view of the Harer stability theorem and the Miller–Morita theorem, the Madsen–Weiss theorem follows from the weak b -principle for colored broken submersions.

Colored broken submersions are similar to (but have better properties than) marked fold maps. In particular, the moduli space of colored broken submersions of dimension d is an appropriate homotopy colimit of classifying spaces $\text{BDiff } M$ of diffeomorphism groups of manifolds of dimension d with certain boundary components; compare the original paper [11]. Colored broken submersions should be compared with enriched fold maps of Eliashberg, Galatius, and Michachev from [4] who used them to give a topological proof of the Madsen–Weiss theorem. Note, however, that in contrast to enriched fold maps, colored broken submersions behave well with respect to taking pullbacks and possess a moduli space (Section 8). We adopt much of the singularity theory technique from [4], but we do not use the major authors’ tool: the Wrinkling theorem. The determination of the classifying space $B\mathcal{M}_b$ is essentially from [7] (however, the rest of their proof of the Madsen–Weiss theorem is not necessary in the current setting).

2 Broken Solutions

Given a smooth map $f: M \rightarrow N$, a point $x \in M$ is said to be *regular* if in a neighborhood U of x the map $f|_U$ is a submersion. A point $x \in M$ is a *fold point* if there are coordinate charts about x and $f(x)$ such that

$$(2.1) \quad f(x_1, \dots, x_m) = (x_1, \dots, x_{n-1}, \pm x_n^2 \pm x_{n+1}^2 \pm \dots \pm x_m^2),$$

where n is the dimension of N , and x_1, \dots, x_m are coordinates in the coordinate chart about x . If every point in M is regular or fold, then f is said to be a *fold map*. It immediately follows from the local coordinate representation (2.1) of f that the set of fold points of f is a submanifold of M of codimension $d + 1$ where $d = \dim M - \dim N$.

Suppose that a path component σ of fold points of f is closed in M and the restriction $f|_\sigma$ is an embedding. Suppose that there is a submersion τ_M of a neighborhood of σ in M onto a neighborhood of 0 in \mathbb{R}^{d+1} such that the inverse image of 0 is precisely σ . Then the map τ_M *trivializes* the normal bundle of σ , though we do not fix a diffeomorphism of a neighborhood of σ onto $\sigma \times \mathbb{R}^{d+1}$. Similarly, suppose that there

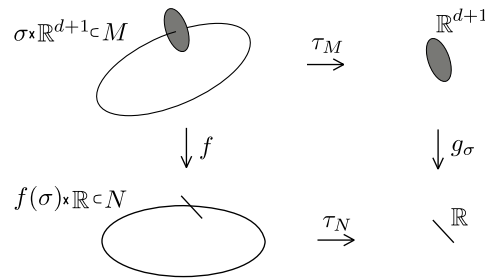


Figure 1: A breaking component.

is a map τ_N of a neighborhood of $f(\sigma)$ to \mathbb{R} trivializing the normal bundle of $f(\sigma)$ in such a way that $\tau_N \circ f = g_\sigma \circ \tau_M$ on the common domain, where g_σ is a Morse function on \mathbb{R}^{d+1} with one critical point. Then we say that σ is a broken component; the maps τ_M and τ_N are parts of the structure of a broken component. The minimum of the indices of the critical points of g_σ and $-g_\sigma$ is called the *index* of σ .

Remark 2.1 The normal bundle in M of a component σ of fold points of a general fold map f is not trivial, and $f|_\sigma$ is not necessarily an embedding. Therefore not every component of fold points of a fold map admits a structure of a broken component. In fact, even if $f|_\sigma$ is an embedding and the normal bundles of σ in M and $f(\sigma)$ in N are trivial, the component σ might still not admit a structure of a broken component since f near σ may be twisted.

Remark 2.2 Broken components of index 0 are not compatible with certain nice structures including the structure of broken Lefschetz fibrations in the case of maps of 4-manifolds into surfaces. For this reason in the general setting in [15] we prohibited broken components of index 0 and proved the weak b -principle in the form of Theorem 8.3 with a less restrictive assumption of indices $\neq 0$. For the argument in the present paper, however, it is convenient to allow broken components of index 0 (so that the space \mathcal{M}_b in Section 9 is connected).

Given an open stable differential relation \mathcal{R} imposed on maps of dimension d , suppose a map f away of the broken fold components is a solution. Then we say that f is a *broken solution* of \mathcal{R} .

3 Bordisms

We need the notion of an oriented bordism of maps of manifolds with boundaries. An *oriented bordism* of a manifold with boundary is an oriented bordism with support in the interior of the manifold. An oriented bordism of maps is defined appropriately.

Definition 3.1 Let M be an oriented compact manifold with corners such that ∂M is the union of $-M_0, M_1$ and $\partial M_0 \times [0, 1]$, where $\partial M_0 \times \{i\}$ and ∂M_i are identified for $i = 0, 1$ (see Figure 2). In particular, the manifolds ∂M_0 and ∂M_1 are canonically diffeomorphic. The corners of M are along $\partial M_0 \times \{i\}$.

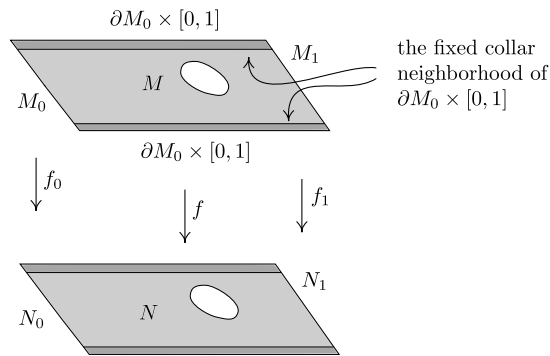


Figure 2: An oriented bordism.

Let N be an oriented compact manifold with corners and with a similar decomposition of the boundary. Let $f: M \rightarrow N$ be a map that preserves the decompositions. In particular, appropriate restrictions of f define two maps

$$f_i: (M_i, \partial M_i) \rightarrow (N_i, \partial N_i), \quad \text{where } i = 0, 1.$$

We say that f is an *oriented bordism* from f_0 to f_1 if $f = f_i \times \text{id}$ and $f = f_0 \times \text{id}_{[0,1]}$ over collar neighborhoods of M_i and $\partial M_0 \times [0, 1]$, respectively. If f_0, f_1 belong to some class of maps, then we require that f belongs to the same class. For example, a bordism of fiber bundles is a fiber bundle.

The product map $F_0 \times \text{id}_{[0,1]}: M_0 \times [0, 1] \rightarrow N_0 \times [0, 1]$ is said to be a *trivial* bordism. Let $m_0 \subset M_0$ be a compact submanifold of codimension zero, and $f: m \rightarrow N_0 \times [0, 1]$ a bordism of $f_0 = F_0|_{m_0}$. Then, there is a well-defined bordism $F: M \rightarrow N_0 \times [0, 1]$ where M is obtained from $M_0 \times [0, 1]$ by removing $m_0 \times [0, 1]$ and attaching m along the new fiberwise boundary. The map F coincides with f over m and with $F_0 \times \text{id}_{[0,1]}$ over the complement to m . We say that F is a bordism of F_0 with *support* in m_0 and with *core* f .

4 Concordances

A bordism $M \rightarrow N$ of maps is said to be a *concordance* if the manifold N is a product $N_0 \times [0, 1]$, and the decomposition of the boundary is the obvious one with $N_1 = N_0 \times \{1\}$. Thus, for example, two proper maps $f_i: M_i \rightarrow N$ with $i = 0, 1$ of manifolds with empty boundaries are said to be *concordant* if there is a proper map $f: M \rightarrow N \times [0, 1]$ together with diffeomorphisms

$$f^{-1}(N \times [0, \varepsilon)) \approx M_0 \times [0, \varepsilon), \quad f^{-1}(N \times (1 - \varepsilon, 1]) \approx M_1 \times (1 - \varepsilon, 1]$$

onto collar ε -neighborhoods of M_0 and M_1 for some $\varepsilon > 0$ such that in view of these identifications

$$f|f^{-1}(N \times [0, \varepsilon)) = f_0 \times \text{id}_{[0, \varepsilon)}, \quad f|f^{-1}(N \times (1 - \varepsilon, 1]) = f_1 \times \text{id}_{(1 - \varepsilon, 1]}$$

(see Figure 3). A concordance of maps of a given type is required to be a map of the same type, e.g., a concordance of submersions is a submersion.

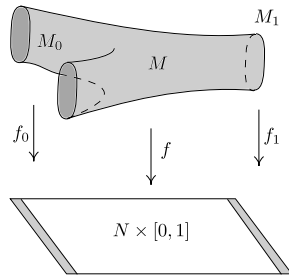


Figure 3: Concordance.

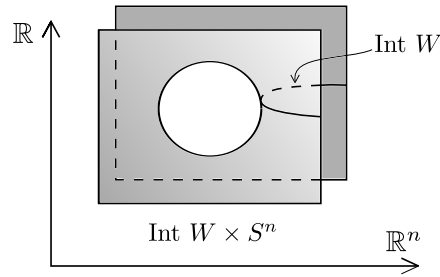


Figure 4: The map (g, α) .

One concordance, called *breaking*, is of particular interest. It is constructed by means of a compact manifold W of dimension d , and a proper Morse function f on the interior of W with values in $(0, \infty)$. Suppose that $f^{-1}[1, \infty)$ is diffeomorphic to $\partial W \times [1, \infty)$ and, furthermore, the restriction of f to the latter is the projection onto $[1, \infty)$. Then

$$(g, \alpha): \text{Int } W \times S^n \xrightarrow{f \times \text{id}} (0, \infty) \times S^n \xrightarrow{\subset} \mathbb{R}^{n+1} \simeq \mathbb{R}^n \times \mathbb{R}$$

is a broken submersion [15] (see Figure 4). The inclusion $(0, \infty) \times S^n \subset \mathbb{R}^{n+1}$ in the composition takes a scalar r and a vector $v \in \mathbb{R}^{n+1}$ of length 1 to rv . By [15, Proposition 4.2], the map g is also a fold map.

Let i_A denote the inclusion of a subset A into \mathbb{R} , and let (g_A, α_A) denote the pull-back of the map $(g, \alpha): \text{Int } W \times S^n \rightarrow \mathbb{R}^n \times \mathbb{R}$ with respect to

$$(i_A \times \text{id}_{\mathbb{R}^{n-1}}) \times \text{id}_{\mathbb{R}}: (A \times \mathbb{R}^{n-1}) \times \mathbb{R} \longrightarrow \mathbb{R}^n \times \mathbb{R}.$$

Then $(g_{[0,1]}, \alpha_{[0,1]})$ is a concordance (see Figure 5). Its inverse is a concordance from (g_1, α_1) to (g_0, α_0) . It is called the *standard model for breaking concordances*, as this concordance breaks fibers of a submersion.

Finally, for any map $(f, \alpha): W \rightarrow N \times \mathbb{R}$ and any of its regular points p , there is a neighborhood $U \approx \mathbb{R}^{d+n-1} \times \mathbb{R}$ of p in W such that (f, α) has the form (g_1, α_1) over U . We say that a concordance of (f, α) is *breaking* if it coincides with the standard model for breaking concordances over U , and it is trivial elsewhere (i.e., it has support in U).

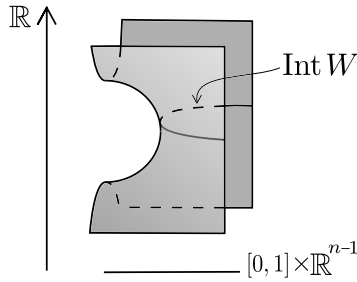


Figure 5: Breaking concordance.

5 Basic Concordances

We will show that Theorem 1.3 follows from the Harer stability theorem. The argument is in the spirit of Eliashberg, Galatius, and Mishachev in [4]. In this section we consider two basic concordances that will play an important role in the proof.

Example 5.1 Let $\pi: E \rightarrow N$ be a fiber bundle with fiber a surface F_g of genus g . Let D_1, D_2 be two disjoint submanifolds of E such that $\pi|_{D_i}$ is a trivial disc bundle over N . In particular, $D_i = N \times D^2$. We aim to construct a broken fold concordance of π to a fiber bundle with fiber F_{g+1} (see Figure 6). Constant maps of $D^2 \sqcup D^2$ and $D^1 \times S^1$ to a point are concordant by means of a Morse function $u: W \rightarrow [0, 1]$ with a unique critical point (of index 1) (see Figure 7). Let Π be the concordance of π with support in $D_1 \sqcup D_2$ and with core $\text{id} \times u: N \times W \rightarrow N \times [0, 1]$. Then Π is a *stabilizing concordance*; it attaches to each fiber F_g a handle (see Figure 6).

A stabilizing concordance also exists in a slightly more general setting where $\pi: E \rightarrow N$ is a broken fibration and D_1, D_2 are two disjoint submanifolds of E such that each $\pi|_{D_i}$ is a trivial disc bundle over N .

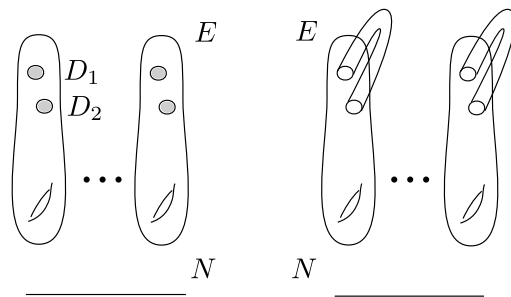


Figure 6: A stabilizing concordance.

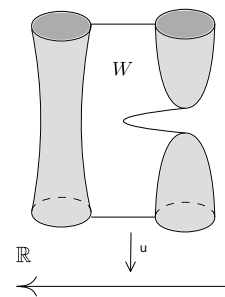


Figure 7: Cobordism W .

In general, however, a given fiber bundle $\pi: E \rightarrow N$ might not contain trivial disc subbundles. For this reason we also introduce a concordance of Example 5.2 which stabilizes fibers locally, only over a subset $U \subset N$; such a concordance always exists. First we will explain the construction in the model case where $N \subset \mathbb{R}^n$ is a disc and π is a disjoint union of two disc bundles, and then we consider the general case. The fibers of this concordance are presented in Figure 8.

Example 5.2 For the construction we will need a compact manifold W and a proper Morse function h on the interior of W such that the fibers of h over negative and positive values are $D^2 \sqcup D^2$ and $D^1 \times S^1$, respectively; compare h with the function u in Figure 7.

Let f_0 be the disjoint union of two trivial disc bundles $D_i = D^2 \times N \rightarrow N, i = 1, 2$, over the standard open disc $N \subset \mathbb{R}^n$ of radius 1. Let $U \subset N$ be the concentric closed subdisc of radius 0.5 (see the part of Figure 8 over $N \times \{0\}$).

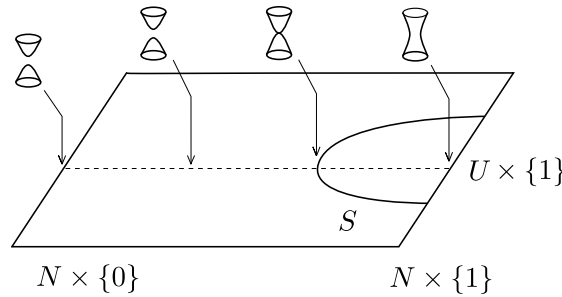


Figure 8: Fibers over $N \times [0, 1]$.

Let S be the lower hemisphere of the sphere in $N \times [0, 1] \subset \mathbb{R}^n \times \mathbb{R}$ of radius 0.5 centered at $\{0\} \times \{1\}$; it meets the boundary $N \times \{1\}$ transversally along $\partial S = \partial U \times \{1\}$ and the projection of the interior of S to $N \times \{1\}$ is a diffeomorphism onto the interior of $U \times \{1\}$ (see Figure 8). We define f to be the broken submersion to $N \times [0, 1] \subset \mathbb{R}^{n+1}$ given by the restriction of

$$W \times S^n \xrightarrow{h \times \text{id}_{S^n}} \mathbb{R} \times S^n \longrightarrow \mathbb{R}^{n+1},$$

where the second map in the composition takes a real number λ and a vector v of length 1 to $\lambda v + e_{n+1}$. Thus, over a neighborhood $S \times \mathbb{R}$ of S in N the concordance f is given by $\text{id}_S \times h$, and over each path component of the complement to S it is a trivial fiber bundle.

We will use this concordance in a more general setting.

Let f_0 be a broken submersion $E \rightarrow N$ and $U \subset N$ a small disc with smooth boundary. We aim to construct a concordance that attaches to each fiber over the interior points of U a handle. We identify U with a closed ball in \mathbb{R}^n of radius 0.5, and a neighborhood V of U in N with an open ball of radius 1. If U is sufficiently small, then $E|_{f_0^{-1}V}$ contains two disjoint submanifolds D_1 and D_2 such that each $f|_{D_i}$ is a trivial disc bundle over V . We have constructed the concordance of $f_0|_{D_1 \sqcup D_2}$. Since

it is trivial near the fiberwise boundary, we can extend the constructed concordance trivially to a concordance of $f_0|_{f_0^{-1}(V)}$. Since the obtained concordance is trivial near $f_0^{-1}(\partial V)$, we can extend it trivially to a desired concordance of f_0 .

An important consequence of the concordance in Example 5.2 is the following proposition.

Proposition 5.3 *Let $f_0: M \rightarrow N$ be a broken submersion over a compact manifold. If over (possibly empty) ∂N the original map f_0 is a fiber bundle with fiber F_g of genus $g \gg \dim N$, then f_0 is concordant to a broken submersion f_1 with connected fibers such that each regular fiber is of genus $\gg \dim N$.*

6 Folds of Index 0

6.1 Erasing Concordance

Let F be an oriented closed surface, and N an arbitrary manifold. Then the broken submersion given by the projection $N \times F \rightarrow N$ is concordant to an empty map. The concordance is given by a broken submersion of $N \times W$ where W is an oriented compact 3-manifold with $\partial W = F$. For example, if W is the standard 3-disc of radius $1/\sqrt{2}$, then the *erasing concordance* $\text{id}_N \times h$ where $h(x) = -|x|^2 + 0.5$ joins the trivial sphere bundle over N with the empty map.

6.2 Chopping Concordance

Let $\pi: E \rightarrow N$ be a submersion of dimension 2 with fiber F_g and $D \rightarrow N$ a trivial open disc subbundle of π . A *chopping concordance* chops off a sphere from each fiber. More precisely, a chopping concordance modifies the fiber bundle only inside D , so we will assume that $E = D$. There are a bordism W from D^2 to $D^2 \sqcup S^2$ and a Morse function $f: W \rightarrow [0, 1]$ with a unique critical point of index 2. The desired concordance is $\text{id}_N \times f$.

The following proposition at least in part appears in [11] and [4].

Proposition 6.1 *Every proper broken submersion f_0 of even dimension d to a compact simply connected manifold N is concordant to a broken submersion f_1 with no fold points of index 0.*

Proof Suppose that N is closed. Let σ be a component of folds of f_0 of index 0, and let U denote one of the two path components of the complement to $f_0(\sigma)$ in N for which the co-orientation of $f_0(\sigma)$ is outward directing. The concordance that we construct is trivial outside a neighborhood of $f_0^{-1}(\bar{U})$. Consequently, we can assume that N is a neighborhood of \bar{U} . In fact, only the component containing σ is modified, and therefore, by the definition of broken submersions, we can assume that $M = \sigma \times \mathbb{R}^{d+1}$ and f_0 is the product of id_σ and $g = x_1^2 + \cdots + x_{d+1}^2$ followed by an identification of $\sigma \times \mathbb{R}$ with a neighborhood of σ in N . Let S be a submanifold in $N \times [0, 1]$ such that $\partial S = \partial \bar{U} \times \{0\}$ and the projection of the interior of S to N is a diffeomorphism onto U . Over a neighborhood $S \times \mathbb{R}$ of S the map f is given by

$\text{id}_S \times g$, while over each of the two components of the complement to S in $N \times [0, 1]$ the map f is a trivial fiber bundle.

Suppose now that N has a non-empty boundary. Let σ be a component of folds of index 0. If $f_0(\sigma)$ bounds S and the co-orientation of ∂S is outward directing, then σ can be eliminated by the concordance of the first part of the proof. Suppose ∂S is inward directing. Let N' denote the enlargement of N with a collar $\partial N \times [0, 1]$ attached to N by means of an identification of $\partial N \subset N$ with $\partial N \times \{1\}$. Let us extend f_0 over the collar so that it is a concordance that first chops off a sphere from each fiber and then eliminates the chopped off component by the erasing concordance. In particular, the extended map f_0 has a new component σ' of breaking folds of index 0. Furthermore, the image of $\sigma' \sqcup \sigma$ bounds $S' \subset N'$ such that the co-orientation of $\partial S'$ is outward directing. Hence, σ and σ' can be eliminated by the concordance of the first part of the proof. Thus, we can assume that f_0 has no folds of index 0. ■

7 Geometric Consequences of the Harer Stability Theorem

Let $\Gamma_{g,k}$ denote the relative mapping class group of a surface $F_{g,k}$ of genus g with k boundary components. There are several proofs of the Mumford conjecture. Most of them use the Harer stability theorem, which states that the homomorphism $\Gamma_{g,k} \rightarrow \Gamma_{g,k-1}$ induced by capping off a boundary component of $F_{g,k}$ and the homomorphism $\Gamma_{g,k} \rightarrow \Gamma_{g+1,k-2}$ induced by attaching a cylinder along two boundary components are homology isomorphisms in dimensions $\ll g$. In view of the Atiyah–Hirzebruch spectral sequence, the Harer stability theorem is equivalent to the assertion that the homomorphisms under consideration induce bordism isomorphisms of classifying spaces in dimensions $\ll g$.

Example 7.1 By the Harer stability theorem, given a fiber bundle $f_0: E_0 \rightarrow N_0$ over a compact manifold of dimension $\ll g$ with fiber $F_{g,k}$ and a section s over ∂N_0 together with a trivialization τ of the normal bundle of $s(\partial N_0)$ in $E_0|_{\partial N_0}$, there exist an oriented bordism of f_0 to $f_1: E_1 \rightarrow N_1$ and extensions of s from $\partial N_0 = \partial N_1$ over N_1 and τ from $s(\partial N_1)$ over $s(N_1)$. Indeed, the initial data defines a map of pairs

$$(N_0, \partial N_0) \rightarrow (\text{BDiff } F_{g,k}, \text{BDiff } F_{g,k+1}),$$

and the assertion is equivalent to the existence of a bordism to a map with image in $\text{BDiff } F_{g,k+1}$.

Example 7.2 Let f_0 be a fiber bundle over N_0 with fiber F_g of genus $g \gg \dim N_0$. Suppose that there exists a stabilization f_1 of f_0 (see Example 5.1). Then f_0 is zero bordant if and only if f_1 is. Indeed, the assertion follows from the fact that the two inclusions

$$\text{BDiff } F_g \longleftarrow \text{BDiff } F_{g,1} \longrightarrow \text{BDiff } F_{g+1}$$

are bordism equivalences in stable range.

Eliashberg, Galatius, and Mishachev [4] gave an important geometric interpretation of the Harer stability theorem. In this section we deduce two consequences of

the Harer stability theorem (Proposition 7.3 and 7.6) for broken submersions using a singularity theory technique from [4].

Proposition 7.3 *Let f_0 be a broken submersion $M_0 \rightarrow N_0$ to a closed simply connected manifold N_0 . Then f_0 is bordant to a fiber bundle.*

Proof In view of Propositions 5.3 and 6.1, we can assume that the fiber of f_0 over each regular point is a connected surface of genus $\gg \dim N_0$ and that f_0 has no folds of index 0. Let σ denote a path component of breaking folds Σf_0 of f_0 . Since $f_0(\sigma)$ is cooriented and N_0 is simply connected, the Mayer–Vietoris sequence implies

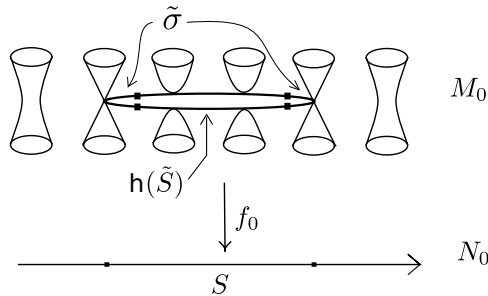


Figure 9: The image $g(\tilde{S})$.

that the complement to $f_0(\sigma)$ consists of two components. Let S denote the closed submanifold in N_0 bounded by $f_0(\sigma)$ such that the coorientation of the fold values ∂S is inward directed (see Figure 9). Recall that a neighborhood of σ is identified with $\sigma \times \mathbb{R}^3$, and near σ the map f_0 is given by $\text{id}_\sigma \times m$, where $m = -x_1^2 - x_2^2 + x_3^2$. Let $\tilde{\sigma}$ be the submanifold $\sigma \times \{0\} \times \{0\} \times \mathbb{R}$ in the neighborhood of σ . Note that the coordinates x_1 and x_2 trivialize the normal bundle of $\tilde{\sigma}$. Let $\tilde{S} = S \cup_{\partial S} S$ be the double of S . A neighborhood $\tilde{\sigma}'$ of ∂S in \tilde{S} is canonically diffeomorphic to $\tilde{\sigma}'$. Given a map h of \tilde{S} , the restrictions of h to the two copies of S are denoted by h_+ and h_- .

In view of Lemma 7.4 below, we can assume that the canonical diffeomorphism $\tilde{\sigma}' \rightarrow \tilde{\sigma}$ extends to an inclusion $h: \tilde{S} \subset M_0$ such that h_+ and h_- are right inverses of f_0 , and the trivialization of the normal bundle of $\tilde{\sigma}$ extends to that over $h(\tilde{S})$.

The promised concordance will have support in a small neighborhood $h(\tilde{S}) \times \mathbb{R}^2$ of $h(\tilde{S})$; hence, we can assume that the complement is empty. Let S' be a copy of S in $N_0 \times [0, 1]$ such that S' meets the boundary of $N_0 \times [0, 1]$ transversally along $\partial S \times \{0\}$ and the projection of the interior of S' to N_0 is a diffeomorphism onto the interior of S . Over a neighborhood $S' \times (-1, 1)$ of S' in $N_0 \times [0, 1]$, the desired concordance is $\text{id}_{S'} \times u$, where u is the Morse function of Example 5.1 (see Figure 7), while over the complement to S' in N_0 the concordance is trivial. ■

Lemma 7.4 *After possibly modifying f_0 by an oriented bordism, we can assume that there is an embedding $h: \tilde{S} \rightarrow M_0$ with trivialized normal bundle extending the canonical diffeomorphism $\tilde{\sigma}' \rightarrow \tilde{\sigma}$ and the trivialization of its normal bundle, respectively such that h_- and h_+ are right inverses to f_0 .*

Proof We can assume that $f_0|_{\Sigma f_0}$ is a general position immersion. Let S_j denote the submanifold in S of points of $f_0(\Sigma f_0)$ of multiplicity j and let S_0 be the complement to $\bigcup S_j$ in S . Then $S = \bigcup S_j$. Suppose that h_-, h_+ and trivializations have been constructed over a neighborhood of S_j for all $j > k$. Let D be an open tubular neighborhood of Σf_0 in M_0 . Then over $B_0 = S_k$ the map b_0 given by $f_0|M_0 \setminus D$ is a

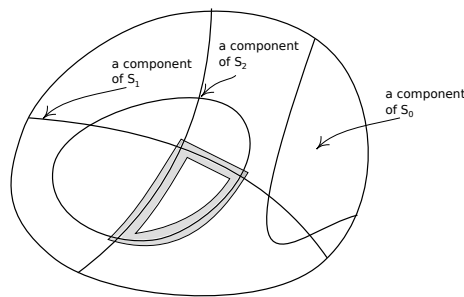


Figure 10: The composition of S .

fiber bundle with fiber $F_{g,2k}$ for some g . By Example 7.1, there is a bordism $b: E \rightarrow B$ of b_0 to $b_1: E_1 \rightarrow B_1$ such that h_-, h_+ and trivializations extend over B_1 . The bordism b can be essentially uniquely thickened to a bordism $\mathbf{b}: \mathbf{E} \rightarrow \mathbf{B} = B \times D^k$ of the restriction of f_0 over a disc neighborhood of B_0 so that \mathbf{b} is a broken submersion with breaking fold values $\bigsqcup B \times D_i^{k-1}$, where D_i^{k-1} ranges over all k coordinate hyperdiscs in D^k . Let N be the union of $N_0 \times I$ and \mathbf{B} in which the top submanifold $(B_0 \times D^k) \times \{1\}$ is identified with $B_0 \times D^k \subset \mathbf{B}$. Let M be a similar union of $M_0 \times I$ and \mathbf{E} . Then after smoothing corners we obtain a bordism $f = f_0 \times \text{id}_I \cup \mathbf{b}$ of f_0 to f_1 such that h_-, h_+ and trivializations extend over a neighborhood of $S_k(f_1)$. Thus, by induction, we get a desired extension. ■

Remark 7.5 The above construction works in the case of $N_0 = S^1$ as well. Indeed, choose S to be the interval in N_0 over which the fibers of f_0 are of maximal Euler characteristic. Then the above bordism eliminates the two folds in $f_0^{-1}(\partial S)$. Continuing by induction we end up with a submersion. Note that here the bordism of f_0 is actually a concordance.

Proposition 7.6 *Let f_0 be a broken submersion $M_0 \rightarrow N_0$ to a compact simply connected manifold N_0 . Suppose that over ∂N_0 the map f_0 is a fiber bundle with fiber F_g of genus $g \gg \dim N_0$. Then $f_0|_{\partial N_0}$ is zero bordant in the class of fiber bundles.*

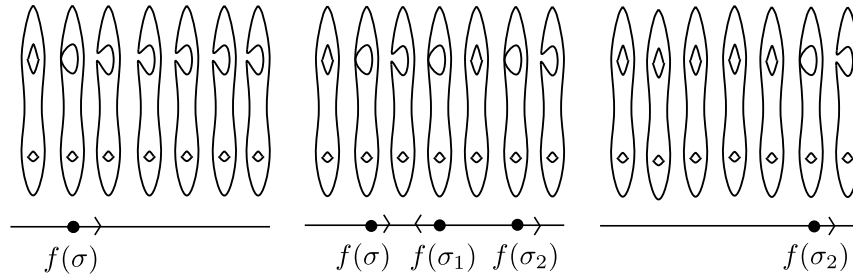


Figure 11: Trading singularities.

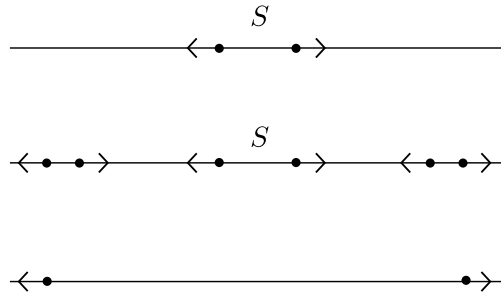


Figure 12: The component σ can be “traded” for a new component of breaking folds parallel to ∂N_0 .

Proof In view of Propositions 5.3 and 6.1, we can assume that the fiber of f_0 over each regular point is a connected surface of genus $\gg \dim N_0$ and that f_0 has no folds of index 0. Let σ be a component of folds and S a closed domain bounded by $f_0(\sigma)$. Assume that the coorientation of ∂S is outward directing; otherwise σ can be eliminated as above. We can assume that a neighborhood of ∂N_0 is identified with $\partial N_0 \times [0, 2)$ and over $U = \partial N_0 \times [0, 1]$ the broken submersion f_0 is the trivial concordance of $f_0|_{\partial N_0}$. Modify f_0 over U so that it is a concordance that first stabilizes the fibers and then destabilizes them back (see Example 5.1). Then f_0 has two new components of breaking folds. One of these two components can be eliminated with σ by the concordance as above. Thus the component σ can be “traded” for a new component of breaking folds parallel to ∂N_0 . Consequently, we can assume that f_0 only has breaking folds parallel to ∂N_0 .

In other words, the map f_0 over a collar neighborhood of ∂N_0 is a concordance that stabilizes the fibers, and over the complement to the collar neighborhood of ∂N_0 it is a fiber bundle. It remains to apply Example 7.2. ■

8 The Weak *b*-principle

A collection \mathcal{C} of smooth maps $f: M \rightarrow N$ with fixed $\dim M - \dim N = d$ is said to be a *class of maps* of dimension d if the induced map h^*g in the pullback diagram

$$\begin{array}{ccc} M' & \longrightarrow & M \\ h^*g \downarrow & & \downarrow g \\ N' & \xrightarrow{h} & N \end{array}$$

is in \mathcal{C} for every map $g \in \mathcal{C}$ and every map h transverse to g .

Example 8.1 If $g: M \rightarrow N$ is a submersion, then for every smooth map $g: N' \rightarrow N$, the induced map h^*g is a submersion as well. If g is an immersion, then the induced map h^*g is an immersion as well, provided that h is transverse to g , i.e., provided that for each $x \in N, x' \in N'$, and $y \in M$ such that $h(x') = x = g(y)$, we have

$$\text{Im}(d_{x'}h) \oplus \text{Im}(d_yg) \simeq T_xN.$$

Thus, both submersions and immersions of dimension d form classes of maps. More generally, solutions to any open stable differential relation \mathcal{R} form a class of maps (see [14]). The transversality condition is clearly important here; if a smooth map h is not transverse to a smooth map g , then the pullback space M' might not admit a manifold structure.

An appropriate quotient space of all proper maps in a collection \mathcal{C} is called the *moduli space* for \mathcal{C} . Namely, recall that the *opening* of a subset X of a manifold V is an arbitrarily small but non-specified open neighborhood $\text{Op}(X)$ of X in V . Consider the affine subspace

$$\{x_1 + \dots + x_{m+1} = 1\} \subset \mathbb{R}^{m+1}.$$

It contains the standard simplex Δ^m bounded by all additional conditions $0 \leq x_i \leq 1$. Let Δ_e^n denote the opening of Δ^m in the considered affine subspace. Then every morphism δ in the simplicial category extends linearly to a map $\tilde{\delta}: \Delta_e^m \rightarrow \Delta_e^n$. Let X_m denote the subset of \mathcal{C} of proper maps to Δ_e^m transverse to all extended face maps. Then X_\bullet is a simplicial set with structure maps $X(\delta)$ given by the pullbacks $f \mapsto \tilde{\delta}^*f$.

The (simplicial model of the) *moduli space* \mathcal{M} for \mathcal{C} is the semi-simplicial geometric realization of X_\bullet . We say that \mathcal{C} satisfies the *sheaf property* if $f: M \rightarrow N$ belongs to \mathcal{C} whenever each $f|_{f^{-1}U_i}$ is in \mathcal{C} for a covering $\{U_i\}$ of N . If f satisfies the sheaf property, then the sets $\Omega_*\mathcal{M}$ and $[N, \mathcal{M}]$ are isomorphic to the sets of bordism classes and concordance classes of proper maps in \mathcal{C} to N , respectively.

We say that a class \mathcal{C} is *monoidal* if the map of the empty set to a point is a map in \mathcal{C} and the class \mathcal{C} is closed with respect to taking disjoint unions of maps, i.e., if $f_1: M_1 \rightarrow N$ and $f_2: M_2 \rightarrow N$ are maps in \mathcal{C} , then

$$f_1 \sqcup f_2: M_1 \sqcup M_2 \longrightarrow N$$

is also a map in \mathcal{C} . For a monoidal class \mathcal{C} the space \mathcal{M} is an H -space with a coherent operation (i.e., the first term of a Γ -space). We will recall the construction of its

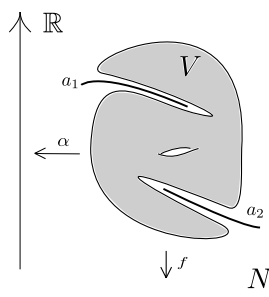


Figure 13: A map (f, α) in the collection $h\mathcal{C}^1$.

classifying space \mathcal{M}^1 and an approximation of \mathcal{M}^1 by a space $h\mathcal{M}^1$ of a relatively simpler homotopy type, for details see [14], [15].

Let \mathcal{C}^1 be the derived collection (not a class) of proper maps $(f, \alpha): V \rightarrow N \times \mathbb{R}$ with $f \in \mathcal{C}$ such that every regular fiber of (f, α) is null-cobordant; and let $\mathcal{C}^1 \subset h\mathcal{C}^1$ be a subcollection of pairs with $\alpha \circ f^{-1}(x) \neq \mathbb{R}$ for all $x \in N$. The spaces \mathcal{M}^1 and $h\mathcal{M}^1$ are the geometric realizations of simplicial sets of maps (f, α) to $\Delta_e^m \times \mathbb{R}$ such that f is transverse to all extended face maps and (f, α) is in \mathcal{C}^1 and $h\mathcal{C}^1$, respectively.

Definition 8.2 The weak b -principle for \mathcal{C} is said to hold true if the inclusion $\mathcal{M}^1 \rightarrow h\mathcal{M}^1$ is a homotopy equivalence.

Theorem 8.3 (Sadykov, [15]) Let \mathcal{C} be a monoidal class of maps satisfying the sheaf property. Suppose that every breaking concordance of every map in $h\mathcal{C}^1$ is itself in $h\mathcal{C}^1$. Then the weak b -principle for \mathcal{C} holds true.

Under the assumptions of Theorem 8.3, if \mathcal{M} is path connected, then it is homotopy equivalent to its group completion $\Omega\mathcal{M}^1$. Furthermore, in view of Theorem 8.3, we can identify \mathcal{M} with $\Omega h\mathcal{M}^1$.

9 Colored Broken Submersions

A map $f: M \rightarrow N$ might not be a broken submersion even if its restriction to every subset $f^{-1}(U_i)$ for an open covering $\{U_i\}$ of N is a broken submersion. In other words, broken submersions do not satisfy the sheaf property. We will use colored broken submersions that satisfy the sheaf property.

Let \mathcal{J} denote the category of finite sets $\mathbf{n} = \{1, \dots, n\}$ for $n \geq 0$ and injective maps. It is a symmetric monoidal category with operation given by taking the disjoint union $\mathbf{m} \sqcup \mathbf{n}$ of objects in \mathcal{J} . An \mathbf{m} -coloring on a broken submersion f is a map C_f from the set of path components of breaking folds of f to the set \mathbf{m} such that the restriction of f to breaking components of any fixed color is an embedding; here we allow \mathbf{m} to be any element in \mathcal{J} or the set ∞ of positive integers. The moduli space of \mathbf{m} -colored broken submersions is denoted by $\mathcal{M}_{\mathbf{m}}$. Recall that an \mathcal{J} -space is a functor

$\mathcal{J} \rightarrow \mathbf{Top}$. We are interested in the \mathcal{J} -space $\mathbf{m} \mapsto \mathcal{M}_{\mathbf{m}}$; its hocolim is denoted by \mathcal{M}_b (see [18]).

Theorem 9.1 *The set of oriented bordism classes of broken submersions of dimension 2 over closed oriented manifolds of dimension n is naturally isomorphic to $\Omega_n(\mathcal{M}_b)$.*

Proof Given a broken submersion f over an oriented closed manifold, a choice of a coloring on its folds determines a class $\tau(f)$ in $\Omega_*(\mathcal{M}_b)$. We can choose a coloring so that different breaking components are colored by different colors. Then, since every isomorphism $\mathbf{m} \rightarrow \mathbf{m}$ is a morphism in \mathcal{J} , the class $\tau(f)$ does not depend on the choice of the coloring. If f is bordant to a broken submersion g , then we can assume that the images of the classifying maps of f and g are in $\mathcal{M}_{\mathbf{m}}$ for a sufficiently big palette \mathbf{m} , and therefore $\tau(f) = \tau(g)$. Conversely, every map $\tau: N \rightarrow \mathcal{M}_b$ representing a bordism class in $\Omega_*(\mathcal{M}_b)$ is linearly homotopic to a map with image in $\mathcal{M}_{\mathbf{m}}$ for some sufficiently big palette \mathbf{m} , and therefore every map τ determines a colored broken submersion. ■

The same argument shows that the canonical map of the telescope

$$\mathcal{M}_{\infty} = \operatorname{colim} \mathcal{M}_{\mathbf{m}} \rightarrow \mathcal{M}_b$$

and the canonical map $\mathcal{M}_b \rightarrow \mathcal{M}_{\infty}$ are homotopy equivalences. In particular, homotopy classes $[N, \mathcal{M}_b]$ are in bijective correspondence with concordance classes of ∞ -colored broken maps to N . Similarly, the homotopy colimit of the \mathcal{J} -space $\mathbf{m} \mapsto \mathcal{M}_{\mathbf{m}}^1$ is denoted by \mathcal{M}_b^1 and $\operatorname{colim} \mathcal{M}_{\mathbf{m}}^1 \simeq \mathcal{M}_b^1$.

A general argument on \mathcal{J} -spaces shows that \mathcal{M}_b is an infinite loop space (see [18]). Alternatively, the Galatius–Madsen–Tillmann–Weiss argument in [14] shows that \mathcal{M}_b is an infinite loop space, and its classifying space is \mathcal{M}_b^1 . The H -space operation on \mathcal{M}_b is defined by

$$\begin{aligned} \mathcal{M}_{\mathbf{m}} \times \mathcal{M}_{\mathbf{n}} &\longrightarrow \mathcal{M}_{\mathbf{m} \sqcup \mathbf{n}}, \\ \Delta_f \times \Delta_g &\mapsto \Delta_{f \sqcup g}, \end{aligned}$$

where Δ_h is the simplex in the moduli space corresponding to a map h . We choose the unit point to be the vertex in $\mathcal{M}_{\emptyset} \subset \mathcal{M}_b$ corresponding to the map $\emptyset \rightarrow \Delta_e^0$.

Since \mathcal{M}_b is path connected, we have $\mathcal{M}_b \simeq \Omega \mathcal{M}_b^1$. Furthermore, by Theorem 8.3 the weak b -principle for colored broken submersions holds true. Consequently, $\mathcal{M}_b \simeq \Omega h \mathcal{M}_b^1$.

10 Proof of the Mumford Conjecture

Proof of Theorem 1.1 Let $h\mathcal{M} \simeq \Omega^{\infty} \operatorname{MTSO}(2)$ be the moduli space for oriented stable formal submersions of dimension 2. We need to show that the map $\operatorname{BDiff} F_g \rightarrow h\mathcal{M}$ induces an isomorphism of homology groups in dimensions $\ll g$. Recall that $h\mathcal{M}^1$ is the geometric realization of the simplicial set whose simplices are given by pairs of proper maps (f, α) to $\Delta_e^n \times \mathbb{R}$ such that f is a submersion of dimension 2 (see [14]). The simplices of a bigger simplicial complex $h\mathcal{M}_b^1$ correspond to proper maps (f, α) to $\Delta_e^n \times \mathbb{R}$ such that f is a broken submersion of dimension 2 whose components of folds are labeled. Hence, there is an inclusion $h\mathcal{M}^1 \rightarrow h\mathcal{M}_b^1$,

which defines a map of the loop space $h\mathcal{M} \simeq \Omega h\mathcal{M}^1$ to the loop space $\Omega h\mathcal{M}_b^1 \simeq \mathcal{M}_b$. Hence, we get a sequence of maps

$$\eta: \text{BDiff}F_g \longrightarrow h\mathcal{M} \longrightarrow \mathcal{M}_b.$$

Since \mathcal{M}_b is an H-space, its fundamental group is abelian and therefore equals $[S^1, \mathcal{M}_b]$. On the other hand, every broken submersion over S^1 is concordant to a fiber bundle with fiber F_g (see Remark 7.5). Hence, the fundamental group of \mathcal{M}_b is the image of the perfect group $\pi_1(\text{BDiff}F_g)$ provided that $g \geq 3$. Consequently, the space \mathcal{M}_b is simply connected. In particular, every bordism class of \mathcal{M}_b is represented by a map of a simply connected manifold N . By Proposition 7.3, every broken submersion over a closed simply connected manifold N is bordant to a fiber bundle with fiber F_g . Thus, η induces an epimorphism in integral homology groups in dimensions $n \ll g$.

Let us show that η_* is injective in dimensions $n \ll g$, i.e., given a broken submersion f_0 over N_0 which restricts over ∂N_0 to a fiber bundle with fiber F_g of genus $g \gg \dim N_0$, there is a fiber bundle f_1 over N_1 that restricts over $\partial N_1 = \partial N_0$ to $f_0|_{\partial N_0}$. Again, we can assume that N is simply connected. Thus, the statement follows from Proposition 7.6. This implies that η_* is an isomorphism in integral homology groups in dimensions $\ll g$. Consequently, the b -principle map $\text{BDiff}F_g \rightarrow h\mathcal{M}$ induces an injective homomorphism in homology groups in a stable range. On the other hand, by the Miller–Morita theorem, the induced homomorphism in rational homology groups is also surjective in a stable range [12]. This implies the Mumford conjecture. ■

Proof of Theorem 1.3 We can turn the map $\eta: \text{BDiff}F_g \rightarrow \mathcal{M}_b$ defined in the proof of Theorem 1.1 into a cofibration. Then the pair $(\mathcal{M}_b, \text{BDiff}F_g)$ classifies bordism classes

$$(f, \partial f): (M, \partial M) \longrightarrow (N, \partial N)$$

such that f is a smooth broken submersion over N that restricts over the boundary ∂N to a fiber bundle ∂f with fiber F_g , $\dim N \ll g$. It remains to observe that $\Omega_*(\mathcal{M}_b, \text{BDiff}F_g) = 0$ for $* \ll g$, since η_* is an isomorphism in a stable range. ■

Acknowledgement I am grateful to Soren Galatius for his generous help; the key idea to use \mathcal{J} -spaces (e.g., see [18]) to link the b -principle to the Mumford conjecture is his. I would also like to thank Ivan Martín Protoss for presenting the material of the note in a series of talks in Topology Seminar in CINVESTAV. This paper was partially written while I was staying at the Max Planck Institute for Mathematics.

References

- [1] Y. Ando, *Cobordisms of maps with singularities of a given class*. *Algebr. Geom. Topol.* **8**(2008), 1989–2029. <http://dx.doi.org/10.2140/agt.2008.8.1989>
- [2] M. Audin, *Cobordismes d’immersions lagrangiennes et legendriennes*. Thèse d’état (Orsay, 1986), Travaux en Cours, Hermann, Paris, 1987.
- [3] M. Barratt and P. Priddy, *On the homology of non-connected monoids and their associated groups*. *Comment. Math. Helv.* **47**(1972), 1–14. <http://dx.doi.org/10.1007/BF02566785>
- [4] Y. Eliashberg, S. Galatius, and N. Mishachev, *Madsen–Weiss for geometrically minded topologists*. *Geom. Topol.* **15**(2011), 411–472. <http://dx.doi.org/10.2140/gt.2011.15.411>

- [5] Y. Eliashberg, *Cobordisme des solutions de relations différentielles*. In: South Rhone seminar on geometry I (Lyon, 1983), Travaux en Cours, Hermann, Paris, 1984, 17–31.
- [6] Y. Eliashberg and N. Mishachev, *Introduction to the h-principle*. Grad. Stud. Math. **48**, Amer. Math. Soc., Providence, Rhode Island, 2002.
- [7] S. Galatius, I. Madsen, U. Tillmann, and M. Weiss, *The homotopy type of the cobordism category*. Acta Math. **202**(2009), 195–239. <http://dx.doi.org/10.1007/s11511-009-0036-9>
- [8] S. Galatius and O. Randal-Williams, *Monoids of moduli spaces of manifolds*. Geom. Topol. **14**(2010), 1243–1302. <http://dx.doi.org/10.2140/gt.2010.14.1243>
- [9] M. Gromov, *Partial differential relations*. Springer-Verlag, Berlin, Heidelberg, 1986.
- [10] A. Hatcher, *A short exposition of the Madsen–Weiss theorem*. Preprint.
- [11] I. Madsen and M. S. Weiss, *The stable moduli space of Riemann surfaces: Mumford’s conjecture*. Ann. of Math. (2) **165**(2007), 843–941. <http://dx.doi.org/10.4007/annals.2007.165.843>
- [12] Sh. Morita, *Geometry of characteristic classes*. Transl. Math. Monogr. **199**, Amer. Math. Soc., Providence, RI, 2001.
- [13] R. Rimányi and A. Szűcs, *Pontrjagin–Thom type construction for maps with singularities*. Topology **37**(1998), 1177–1191. [http://dx.doi.org/10.1016/S0040-9383\(97\)00093-1](http://dx.doi.org/10.1016/S0040-9383(97)00093-1)
- [14] R. Sadykov, *The bordism version of the h-principle*. Preprint.
- [15] ———, *The weak b-principle*. Contemp. Math. **621**(2014), 101–112.
- [16] ———, *Bordism groups of special generic mappings*. Proc. Amer. Math. Soc. **133**(2005), 931–936. <http://dx.doi.org/10.1090/S0002-9939-04-07586-0>
- [17] ———, *Bordism groups of solutions to differential relations*. Algebr. Geom. Topol. **9**(2009), 2311–2349. <http://dx.doi.org/10.2140/agt.2009.9.2311>
- [18] Ch. Schlichtkrull, *Units of the ring spectra and their traces in algebraic K-theory*. Geom. Topol. **8**(2004), 645–673. <http://dx.doi.org/10.2140/gt.2004.8.645>
- [19] A. Szűcs, *Cobordism of singular maps*. Geom. Topol. **12**(2008), 2379–2452. <http://dx.doi.org/10.2140/gt.2008.12.2379>
- [20] R. Wells, *Cobordism groups of immersions*. Topology **5**(1966), 281–294. [http://dx.doi.org/10.1016/0040-9383\(66\)90011-5](http://dx.doi.org/10.1016/0040-9383(66)90011-5)

Department of Mathematics, CINVESTAV, Av. Instituto Politecnico Nacional 2508, Col. San Pedro Zacatenco, Mexico, D.F. CP 07360
 e-mail: rstdk@gmail.com